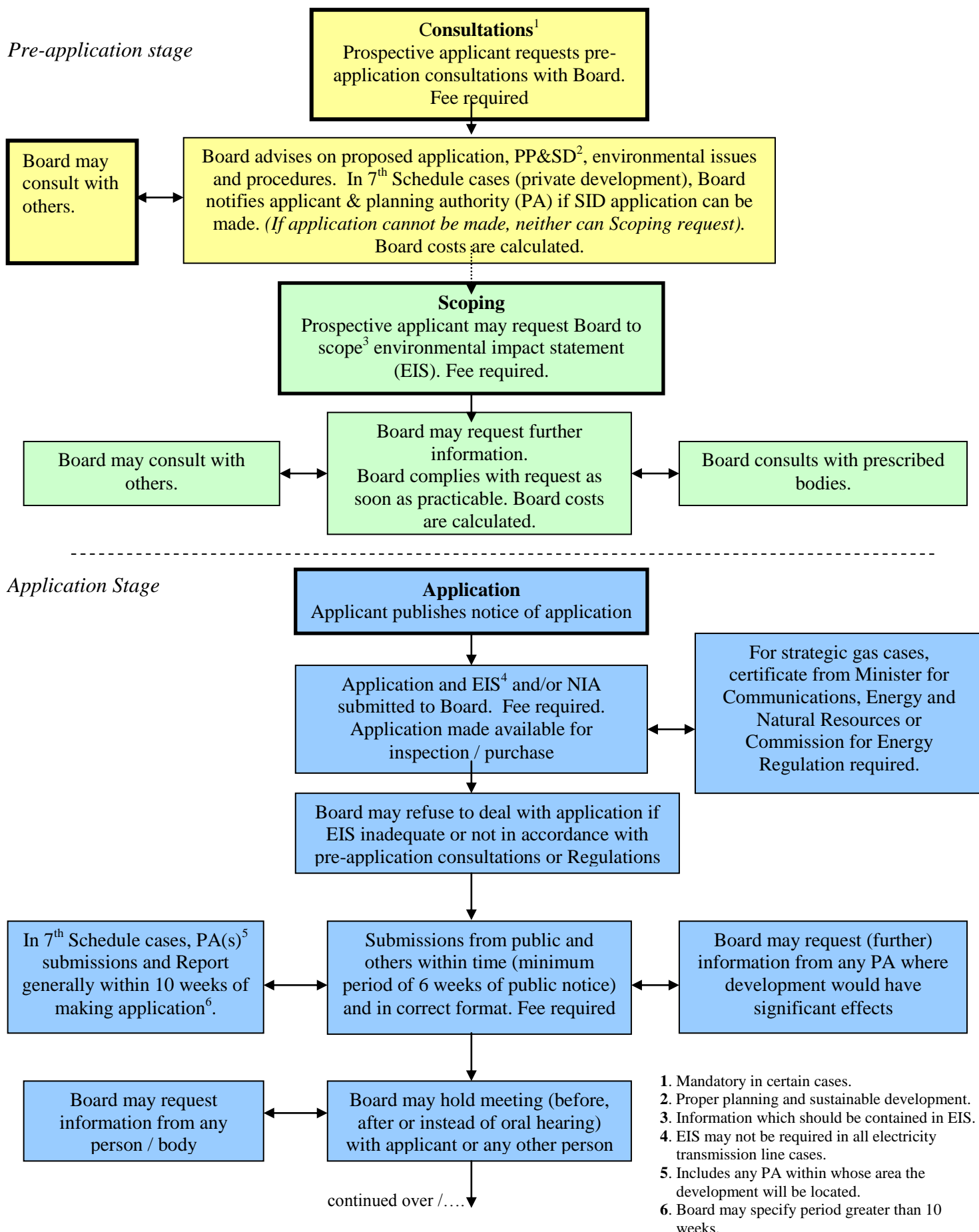
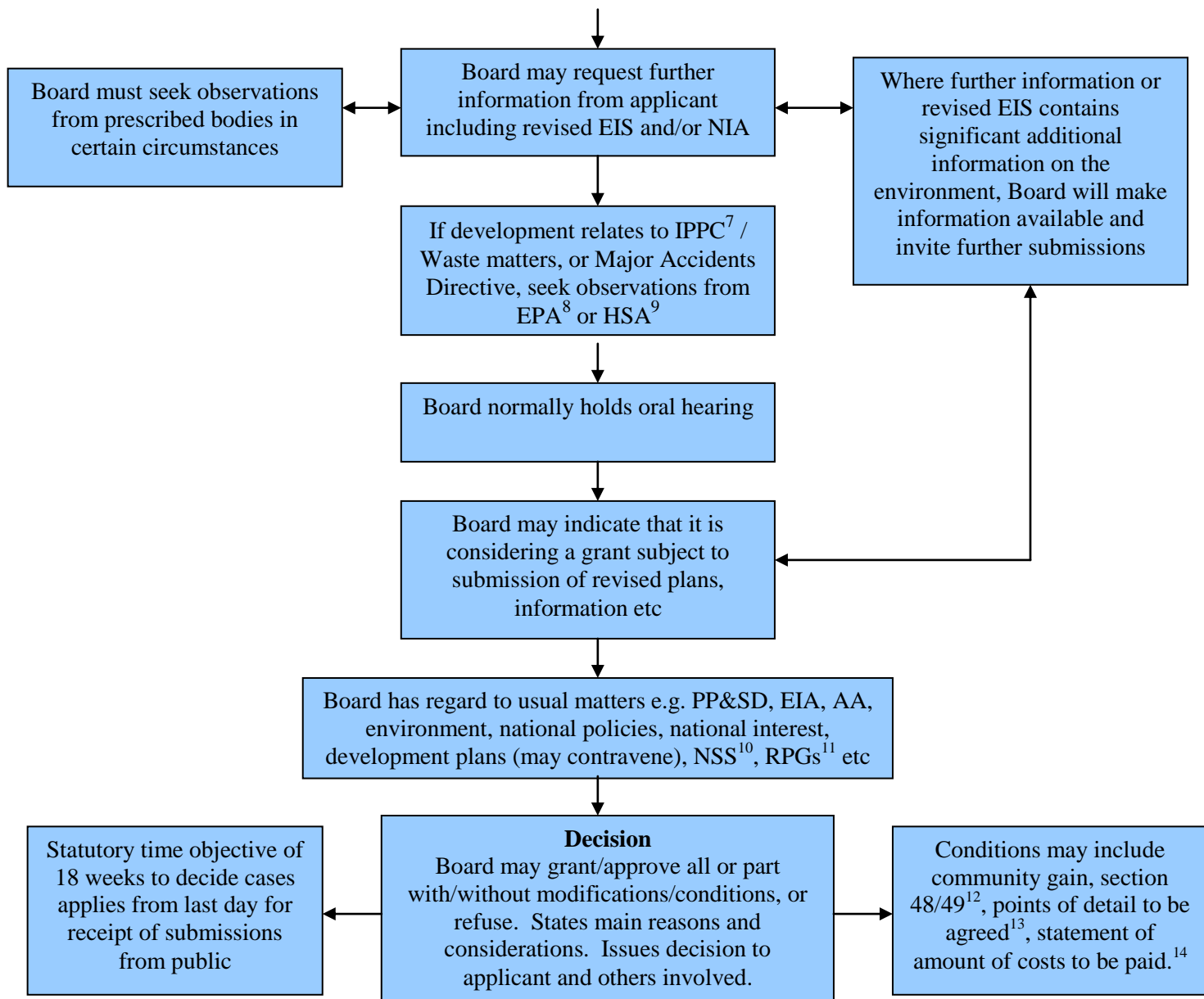


# Strategic Infrastructure Development (SID)

## Flowchart

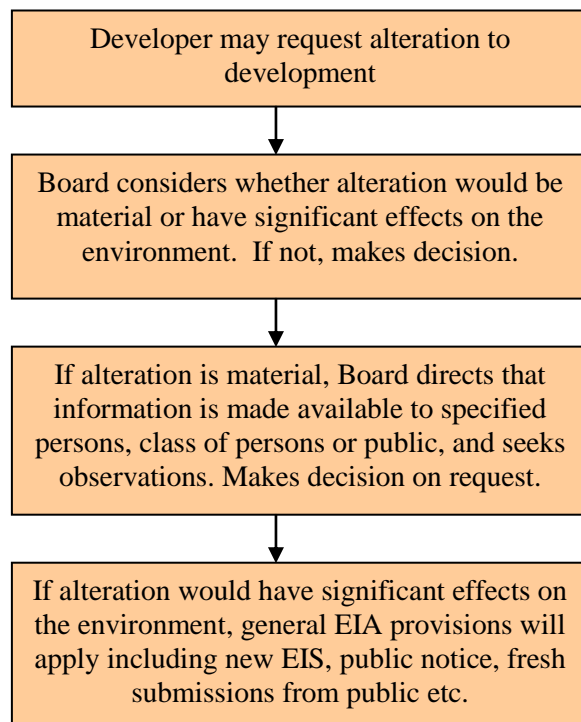
(This flowchart gives a general indication of the stages involved in SID cases. However, procedures can vary depending on the particular type of SID involved)





*Post-decision stage*

Board may amend decision to correct clerical error or to clarify what it intended to convey. May invite submissions from relevant persons. Change may not result in material alteration to development as permitted /approved.



- 7. Integrated pollution prevention and control.
- 8. Environmental Protection Agency.
- 9. Health and Safety Authority.
- 10. National Spatial Strategy.
- 11. Regional Planning Guidelines
- 12. Section 48/49 financial contribution conditions.
- 13. Only applies to 7<sup>th</sup> Schedule cases.
- 14. Must issue with 7<sup>th</sup> Schedule decision. In other cases, where it applies, it may issue at a later date.