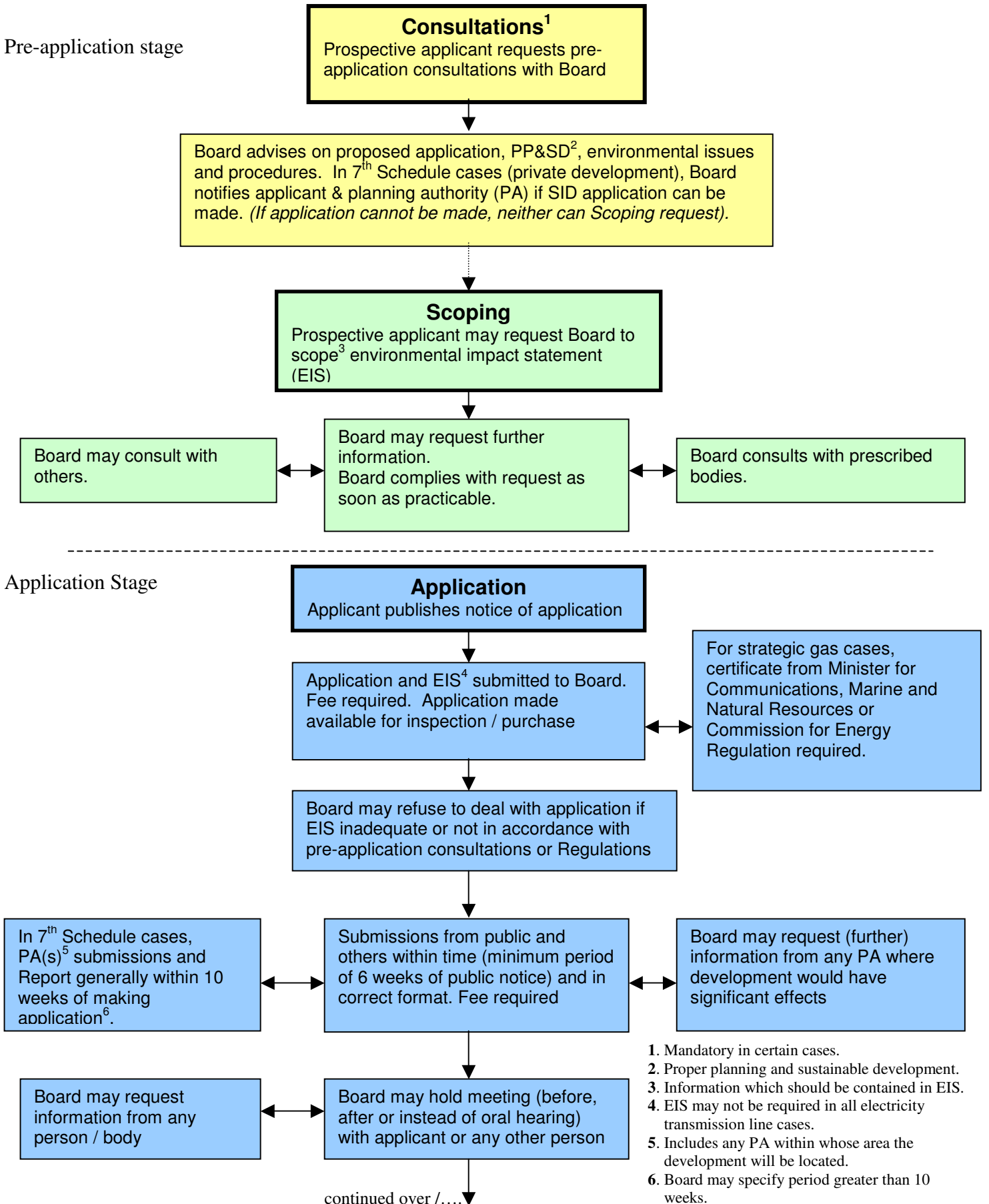


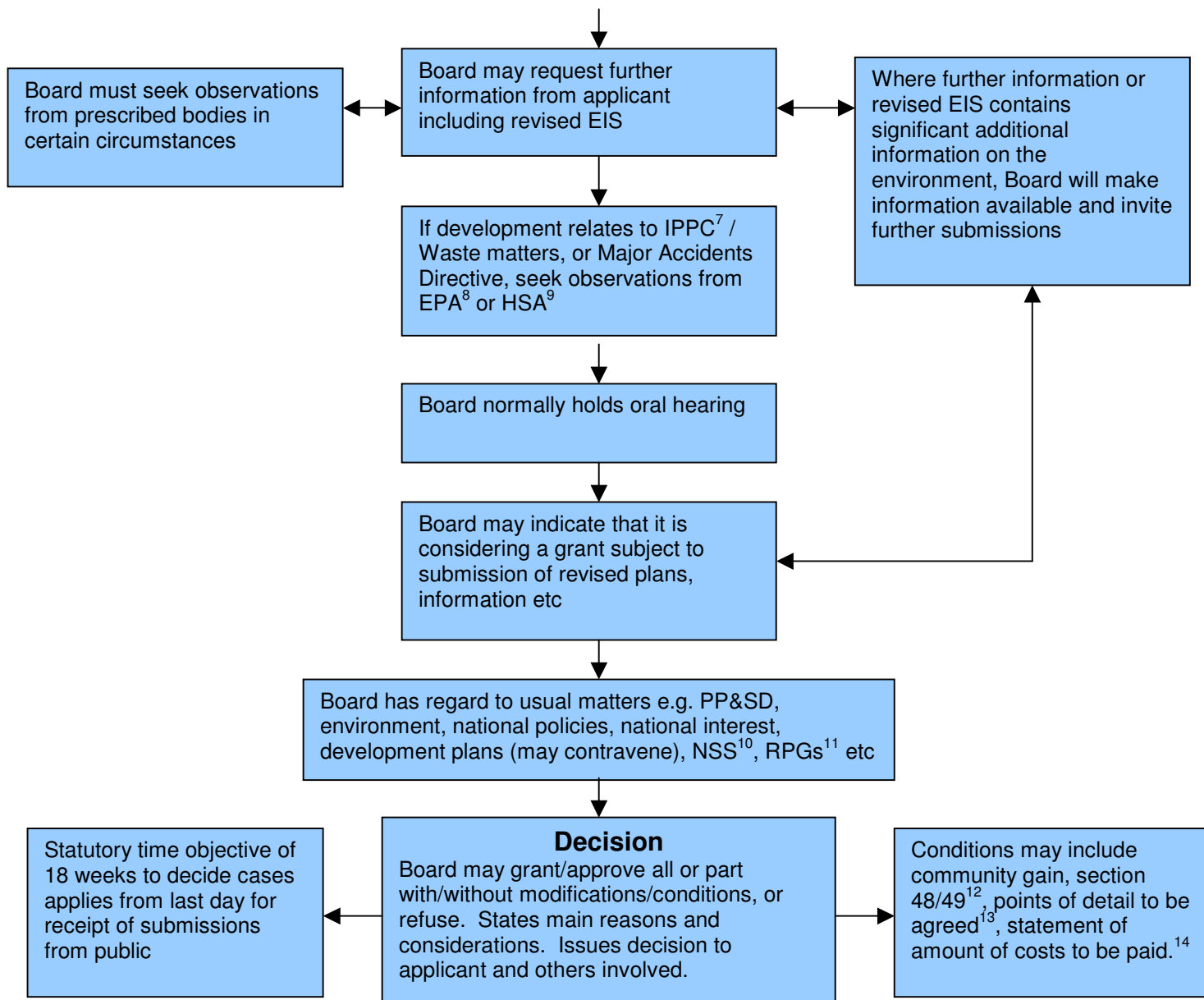
Strategic Infrastructure Development (SID)

Flowchart

(This flowchart gives a general indication of the stages involved in SID cases. However, procedures can vary depending on the particular type of SID involved)

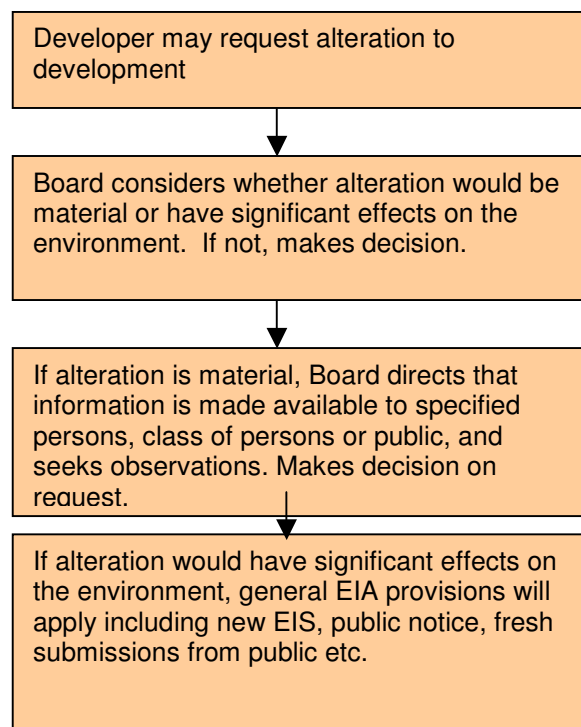


1. Mandatory in certain cases.
2. Proper planning and sustainable development.
3. Information which should be contained in EIS.
4. EIS may not be required in all electricity transmission line cases.
5. Includes any PA within whose area the development will be located.
6. Board may specify period greater than 10 weeks.



Post-decision stage

Board may amend decision to correct clerical error or to clarify what it intended to convey. May invite submissions from relevant persons. Change may not result in material alteration to development as permitted /approved.



- 7. Integrated pollution prevention and control.
- 8. Environmental Protection Agency.
- 9. Health and Safety Authority.
- 10. National Spatial Strategy.
- 11. Regional Planning Guidelines
- 12. Section 48/49 financial contribution conditions.
- 13. Only applies to 7th Schedule cases.
- 14. Must issue with 7th Schedule decision. In other cases, where it applies, it may issue at a later date.

6th March 2007.