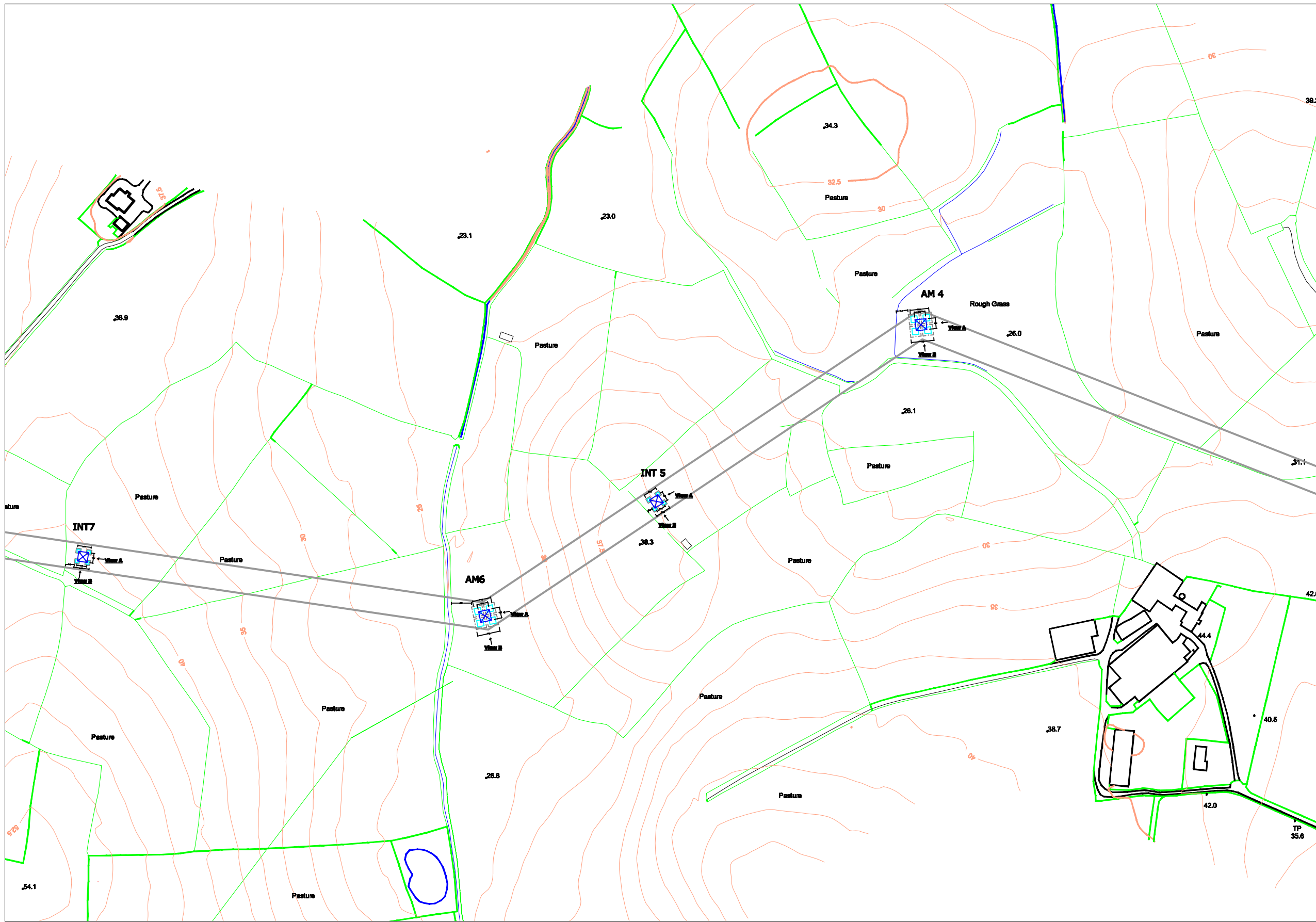
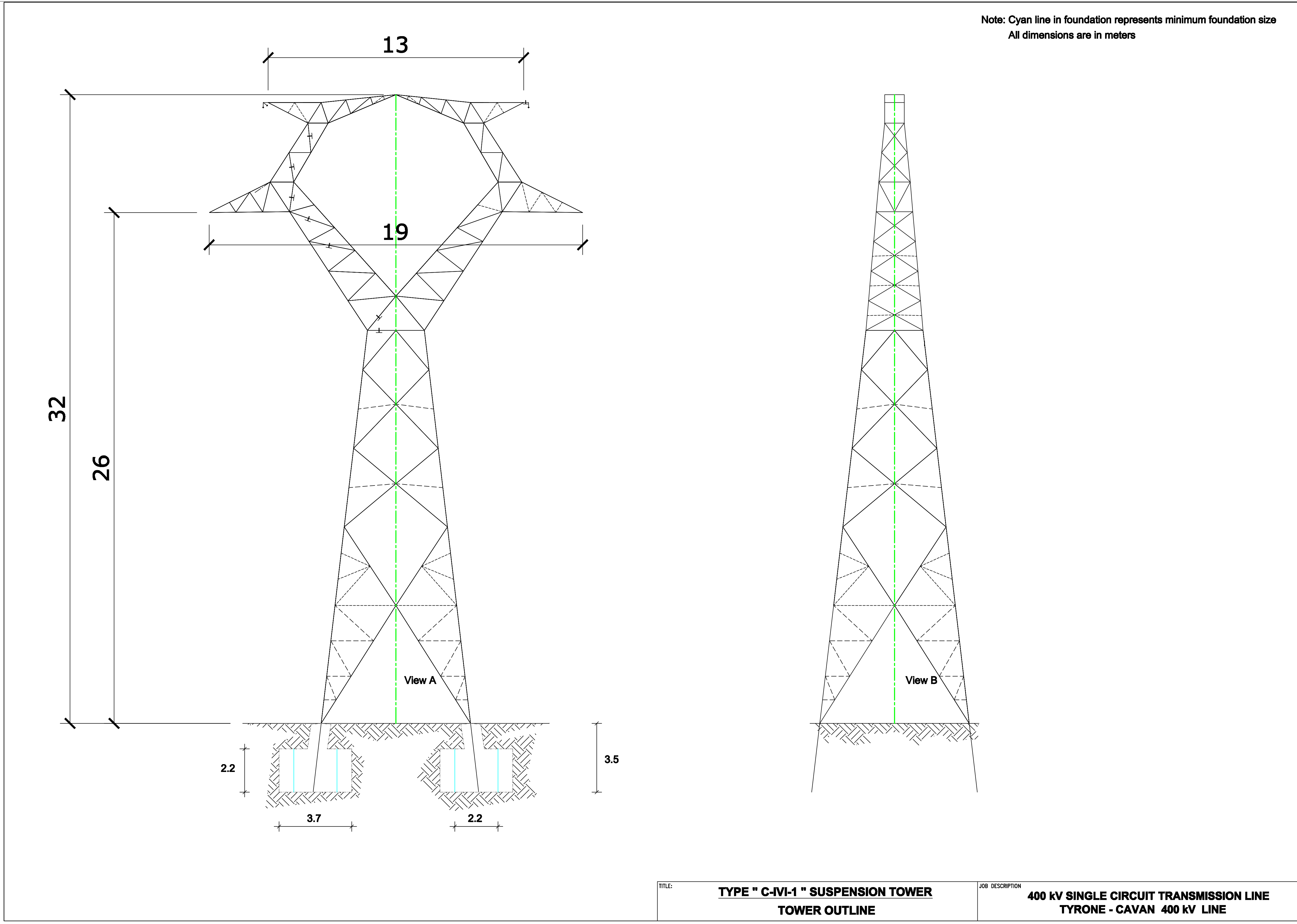


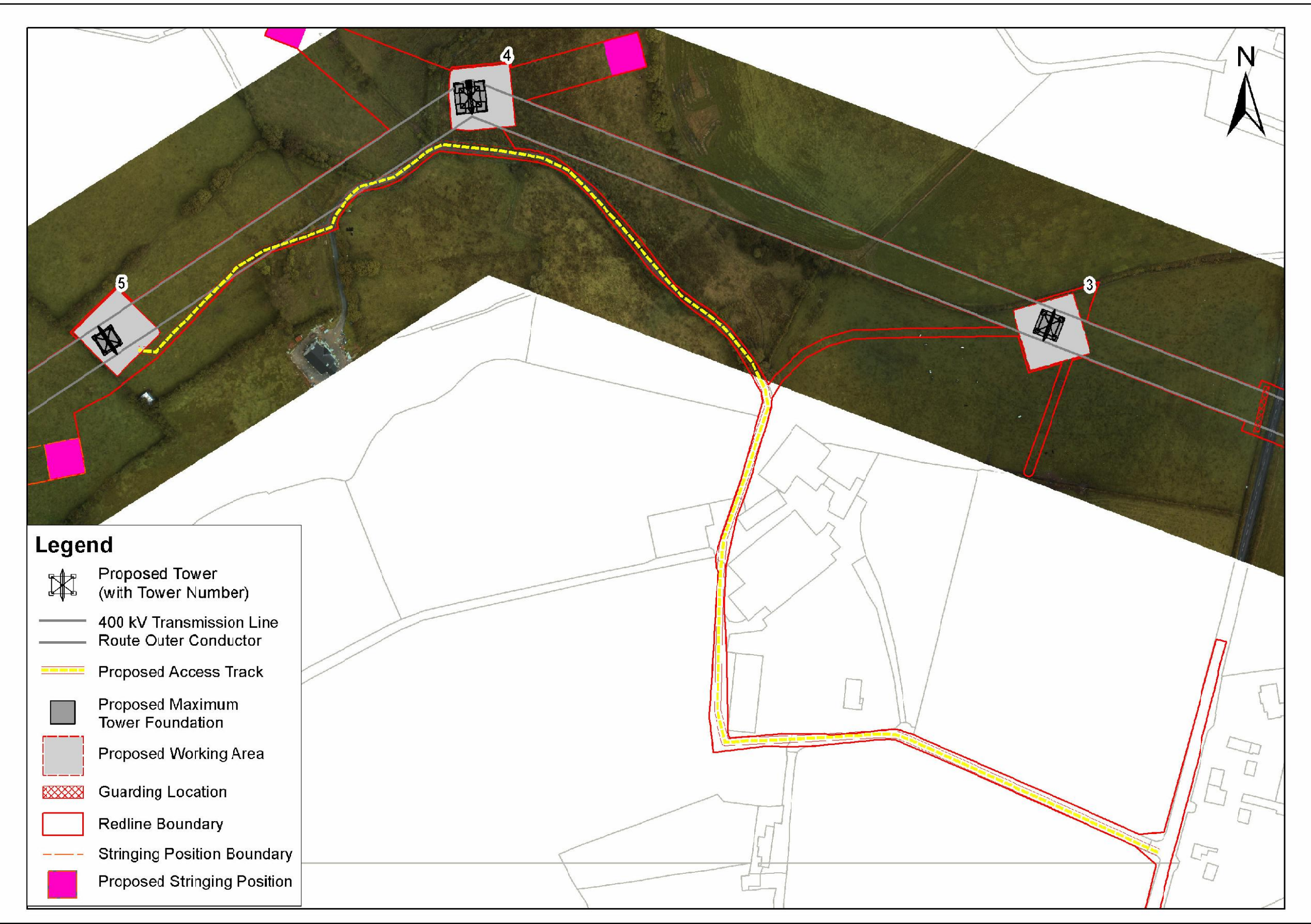
View 1  
Not To  
Scale



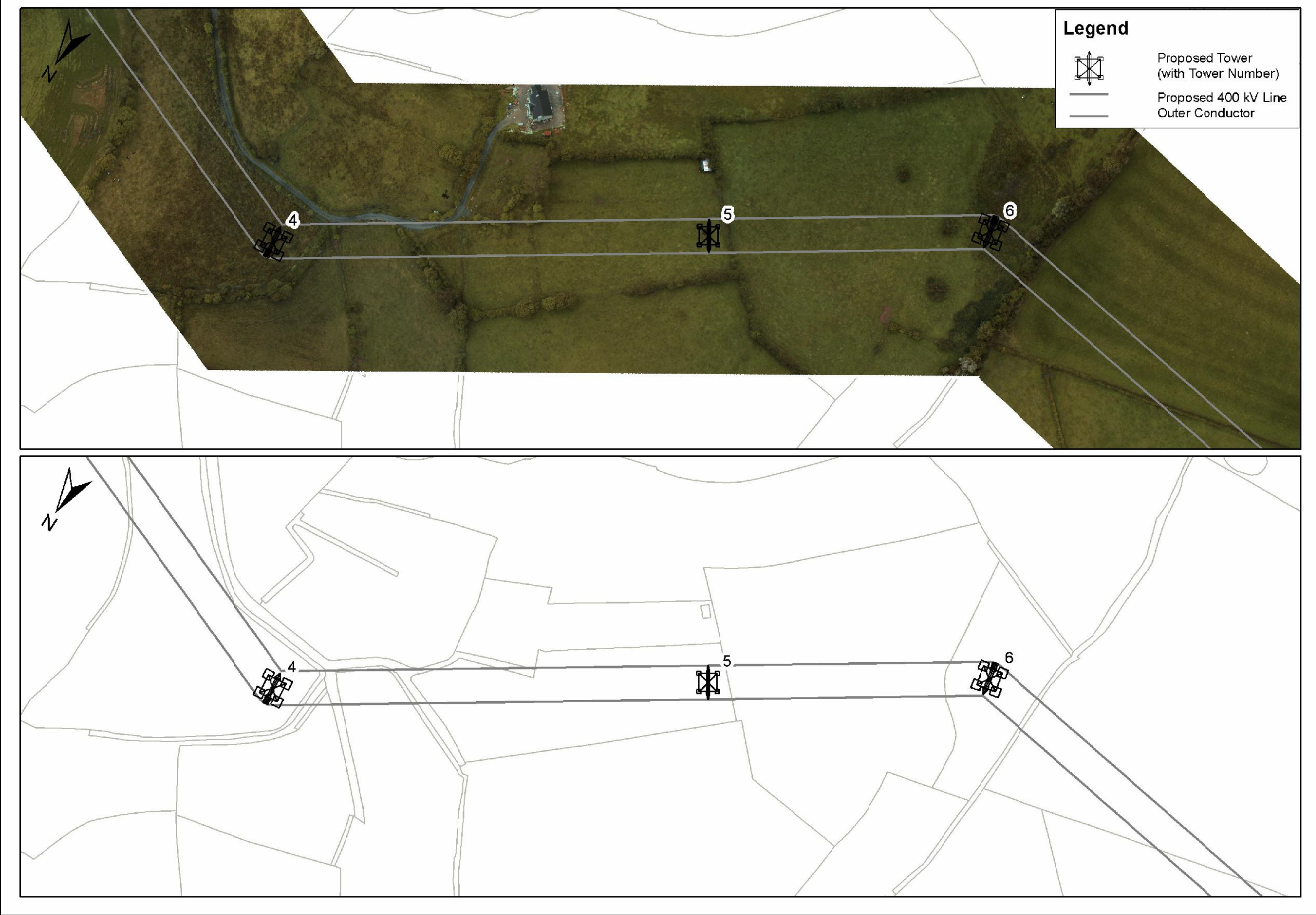
View 2: 1/100



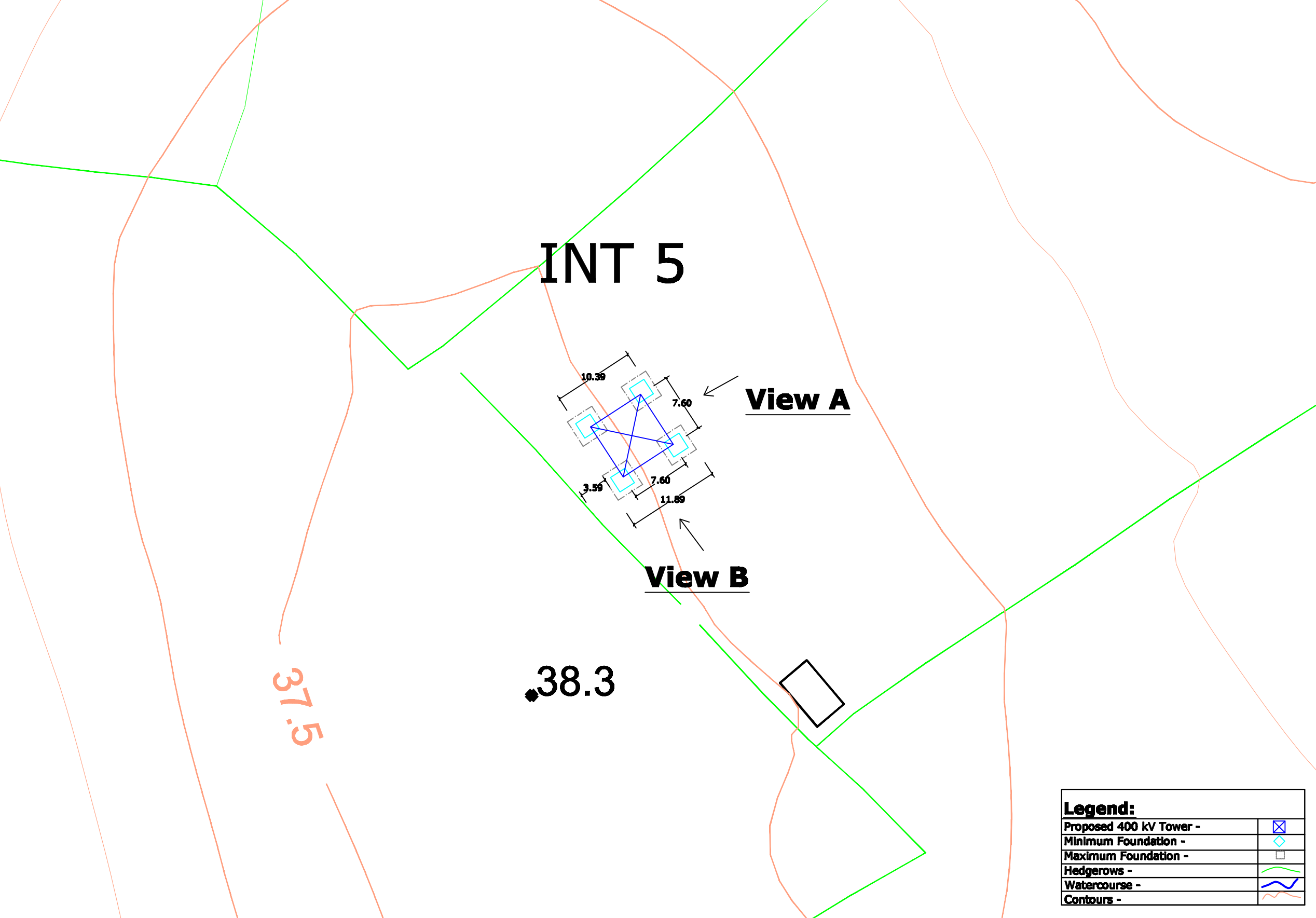
View 3: Not To Scale



View 4: Not To Scale



View 5: 1/500



- View 1 - Site Location Map  
View 2 - Tower Drawing  
View 3 - Associated Works Drawing  
View 4 - Overhead Line Route Map  
View 5 - Tower & Foundation Layout

**Note:**  
All foundations and towers are square in plan.

0	00.00.00	ISSUED FOR	AS	AS	AS	AS			
REV.	DATE	REVISION DESCRIPTION	DRN	PROJ	VER	APP			
PURPOSE OF ISSUE - PRELIMINARY UNLESS INDICATED									
TENDER	<input type="checkbox"/>	CUSTOMER APPROVAL	<input type="checkbox"/>	CONSTRUCTION	<input type="checkbox"/>	AS-BUILT	<input type="checkbox"/>	REVISED	<input type="checkbox"/>
Client							N.I.E.		
Project							Tyrone - Cavan 400 kV Interconnector		
Contract									
Drawing Title							Proposed 400 kV Line Structure Location No 5 Composite Drawing		
Production Unit							High Voltage		
ES&I International ES&I Energy Innovation									
ES&I Engineering Solutions, Stephen Court, 16-21 St. Stephens Green, Dublin 2, Ireland. Tel: +353 (0)1 700 8000 Fax: +353 (0)1 700 7100 Email: <a href="mailto:marketing@es&amp;i.ie">marketing@es&amp;i.ie</a> Web: <a href="http://www.es&amp;i.ie">www.es&amp;i.ie</a> ES&I Engineering Solutions is a trading name of ES&I Engineering & Facility Management Limited. Registered Office: as above Registered in Ireland No. 112254									
DRWN	JW	PROJEN	JW	VER	CM	APPROV	JD	APPROV	April 2013
CUSTOMER	102	102	102	102	102	102	102	102	As Shown
DRAWING NUMBER							PE687-D141-093-005-000		