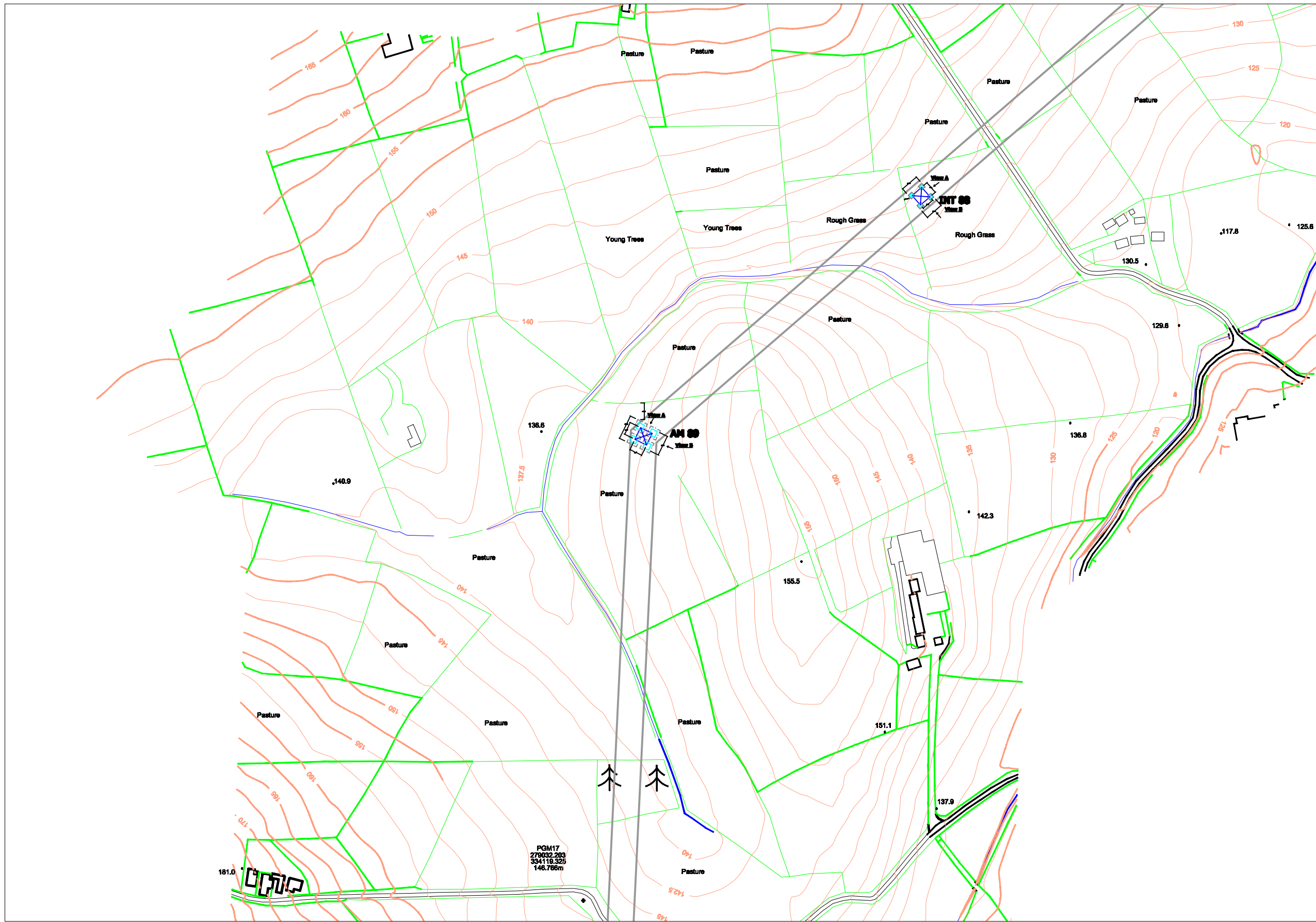
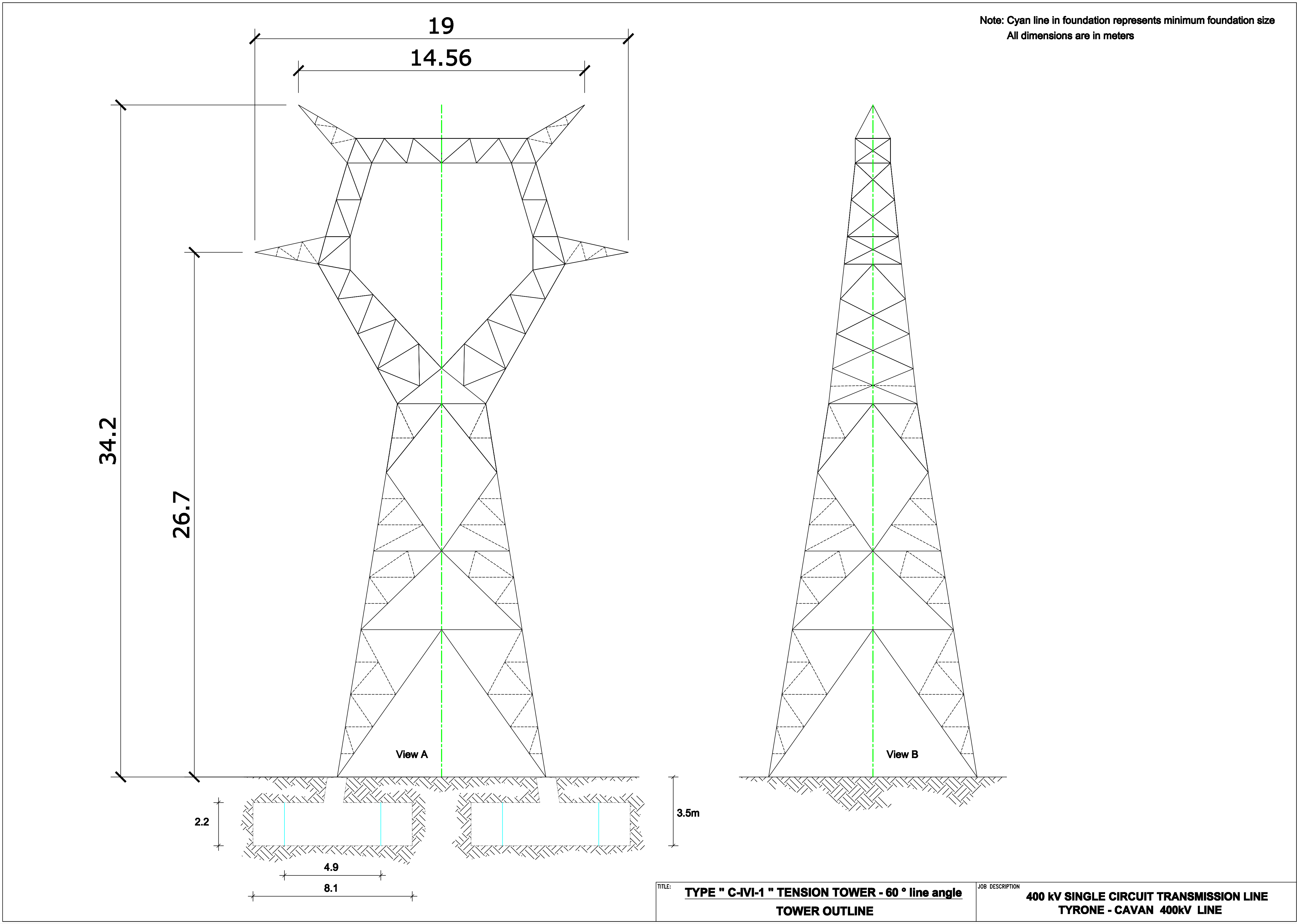


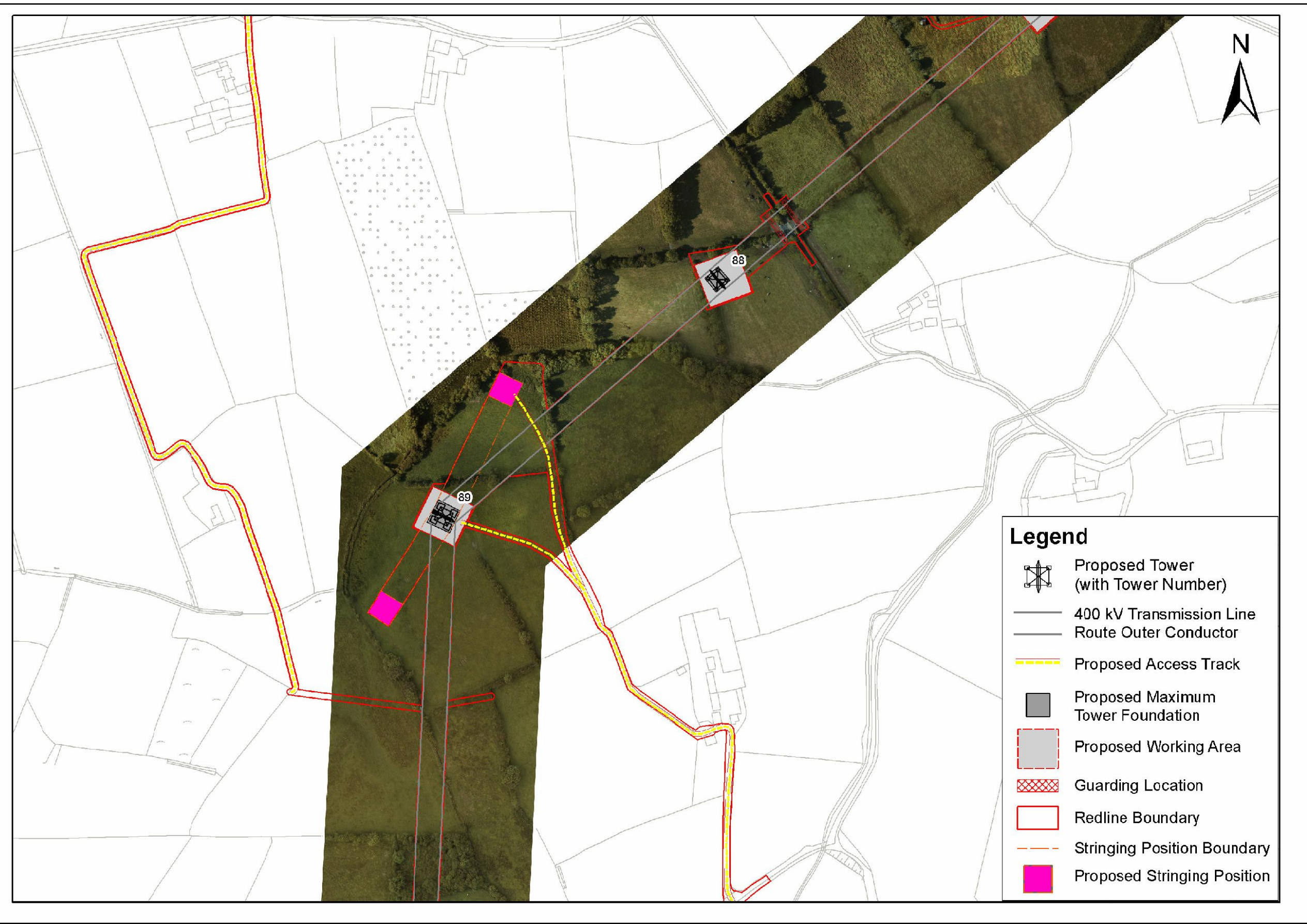
View 1
Not To
Scale



View 2: 1/100



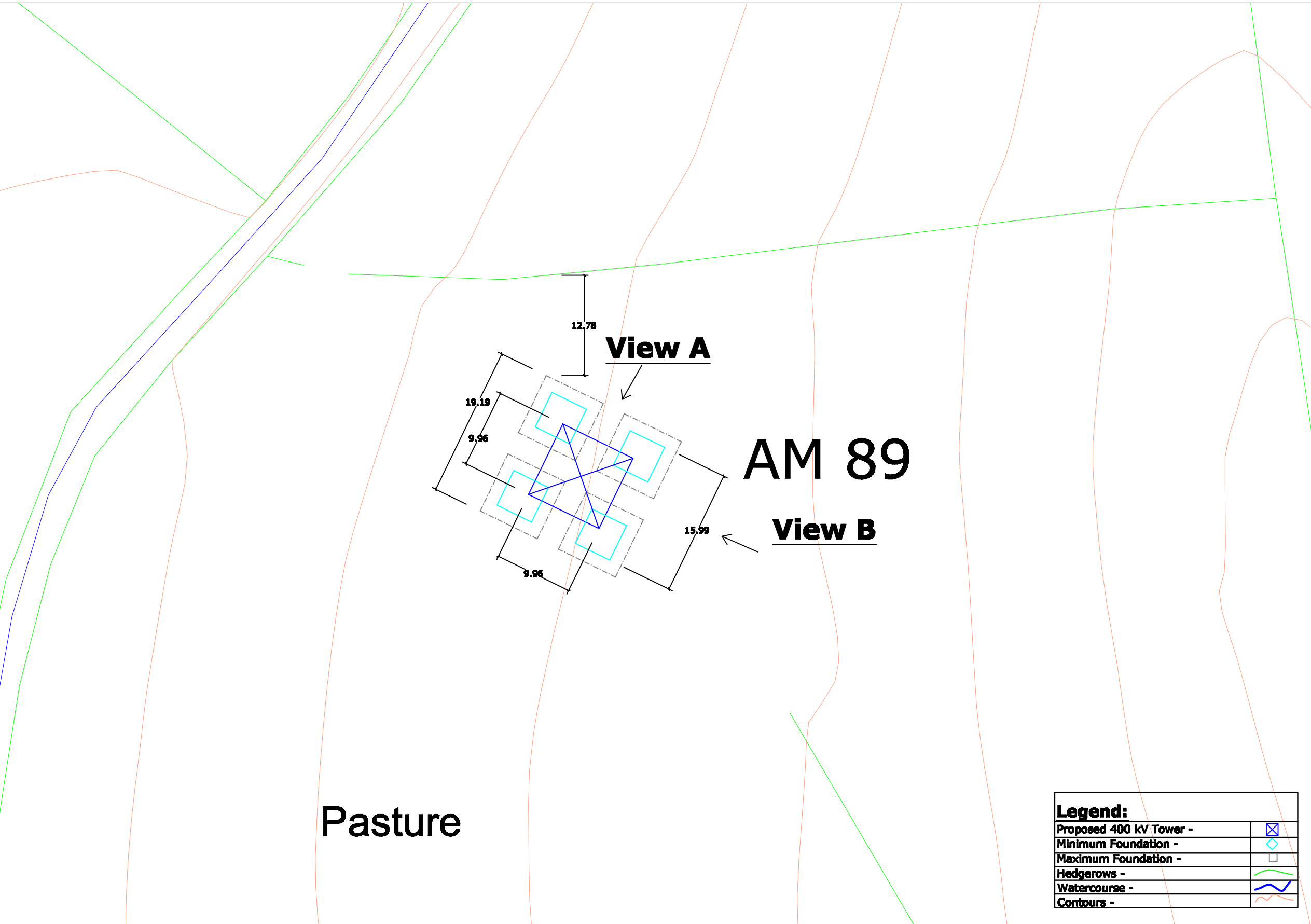
View 3: Not To Scale



View 4: Not To Scale



View 5: 1/500



View 1 - Site Location Map
View 2 - Tower Drawing
View 3 - Associated Works Drawing
View 4 - Overhead Line Route Map
View 5 - Tower & Foundation Layout

Note:
All foundations and towers are square in plan.

0	00.00.00	ISSUED FOR --	AS	AS	AS	AS
REV.	DATE	REVISION DESCRIPTION	DRN	PROJ	VER	APP
PURPOSE OF ISSUE - PRELIMINARY UNLESS INDICATED						
TENDER <input type="checkbox"/> CLIENT APPROVAL <input type="checkbox"/> CONSTRUCTION <input type="checkbox"/> AS-BUILT <input type="checkbox"/> REVISED <input type="checkbox"/>						
Client: N.I.E.						
Project: Tyrone - Cavan 400 kV Interconnector						
Contract:						
Drawing Title: Proposed 400 kV Line Structure Location No 89 Composite Drawing						
Production Unit: High Voltage						
ESP International						
ESP Engineering Solutions, Stephen Court, 16-21 St. Stephen's Green, Dublin 2, Ireland. Tel: +353 (0)1 708 8000 Fax: +353 (0)1 708 7188 Email: marketing@esp.ie Web: www.esp.ie						
ESP Engineering Solutions is a trading name of ESP Engineering & Facility Management Limited. Registered Office as above. Registered in Ireland No. 112254.						
DRN	PROJ	VER	CM	JD	AS	APP
JN	JN	JN	CM	JD	AS	APP
102	102	102	102	102	102	102
DRAWING NUMBER: PE687-D141-093-089-000						