



North-South 400kV Interconnection Development

Final Re-evaluation Report APPENDIX C

CMSA Maps

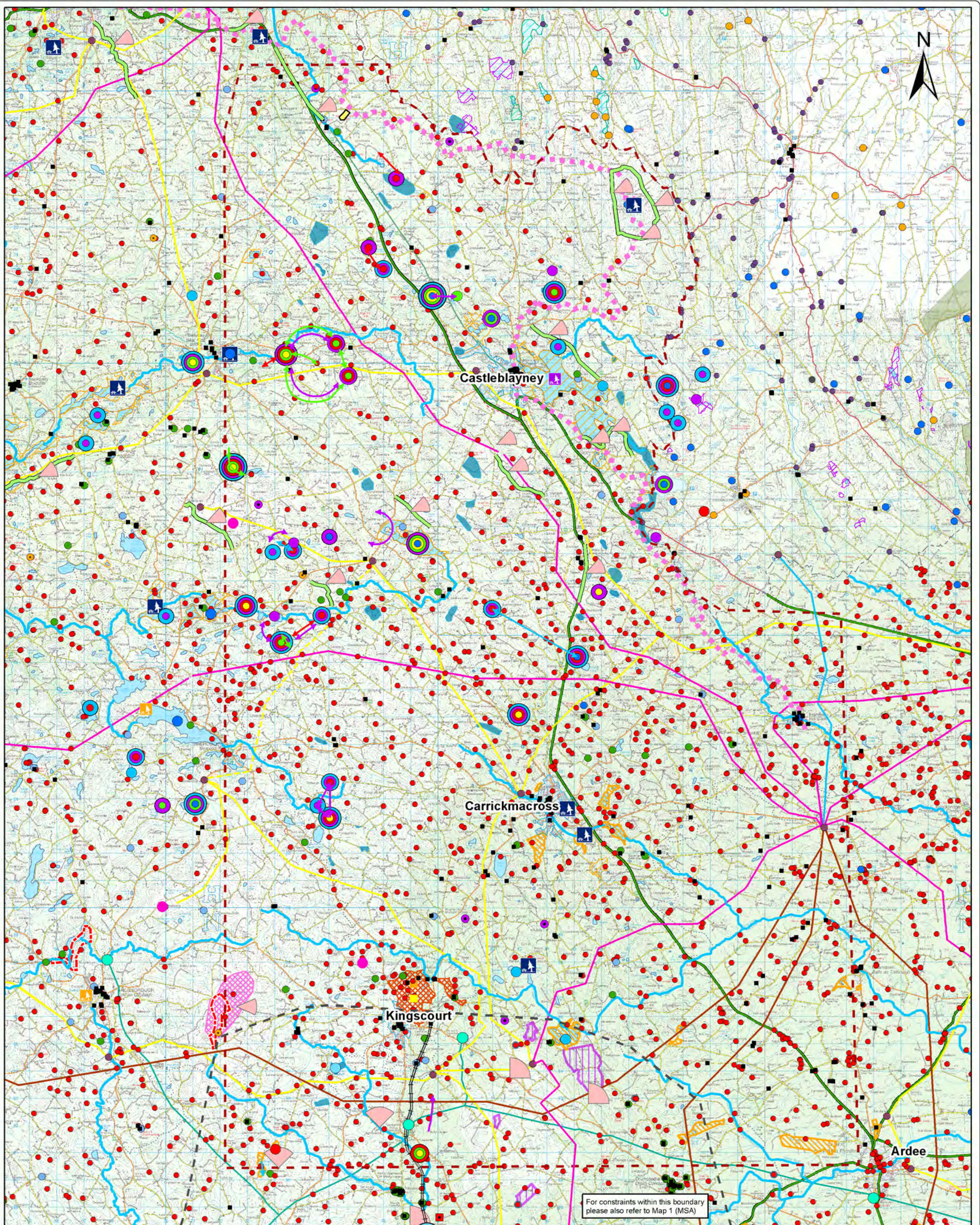


Part Funded by the EU-TEN-E Initiative

APPENDIX C

MAPS RELATING TO THE CMSA

Map 1 (CMSA)	Constraints within the Cavan-Monaghan Study Area (CMSA)
Map 2 (CMSA)	Route Corridor Options for the CMSA with the Ecological Constraints of the area
Map 3.1 (CMSA)	Route Corridor Options for the CMSA with the Landscape Constraints of the area
Map 3.2 (CMSA)	Corridor Options and Landscape Character Types Map
Map 3.3 (CMSA)	Corridor Options and Landscape Character Areas Map
Map 4 (CMSA)	Route Corridor Options for the CMSA with the Geology Constraints of the area
Map 5 (CMSA)	Route Corridor Options for the CMSA with the Water Constraints of the area
Map 6 (CMSA)	Route Corridor Options for the CMSA with the Settlement Constraints and Population Densities of the area
Map 7 (CMSA)	Route Corridor Options for the CMSA with the Cultural Heritage Constraints of the area
Map 8 (CMSA)	Route Corridor Options for the CMSA with the Utilities and Infrastructure Constraints of the area
Map 9 (CMSA)	Indicative Line Route (CMSA)



For constraints within this boundary
please also refer to Map 1 (MSA)

- Death Study Area (MSA)
- Cavan Monaghan Study Area (CMSA)
- National Heritage Area/Proposed National Heritage Area
- Scenic Routes
- Battle of Clontarf Site (1596)
- Preservation Order
- National Inventory of Architectural Heritage
- National Monuments/Scheduled Monuments (NI)
- Potential National Monument
- Record of Protected Structures / Listed buildings (NI)
- Area of Significant Archaeological Interest
- Industrial Heritage (NI)
- RMP sites / SMR sites
- Architectural Conservation Areas
- Areas of Special Landscape Interest
- Breeding Wader Sites (NI)
- Forest Park
- Railway
- Landmarks (Meth Landscape Character Assessment)
- Geological Interest Site (designated by GSI)
- Area of Primary Amenity Value
- Area of Secondary Amenity Value
- Lakeside Amenity Area
- Swan flight lines 2005/06
- Swan flight lines 2009/10
- Swan flight lines 2010/11
- Swan flight lines 2011/12
- Historical Swan Site
- Swan site recorded in Winter Survey Period 1: 2007/2008
- Swan site recorded in Winter Survey Period 2: 2008/2009
- Swan site recorded in Winter Survey Period 3: 2009/2010
- Swan sites recorded in Winter Survey Period 4: 2010/2011
- Swan site recorded in Winter Survey Period 5: 2011/2012
- Major river
- Existing Paths and Cycle Routes
- Monaghan Way
- Planning Permission Granted for new 38 kV Line
- 38 kV line
- 110 kV line
- 220 kV line
- 275 kV line
- National Road
- Gas Pipeline
- Windfarm
- Gas Stations
- Electricity Station
- Urban areas
- Area of Special Scientific Interest (NI)
- Green Belt region
- Site of Local Nature Conservation Importance (NI)
- Scenic Viewpoint
- Sensitive Ecological Receptors
- Geological Interest Site (surveyed by GSI)
- Area of Special Landscape Interest
- High Landscape Value Area

0 0.5 1 2 3 4
Kilometres

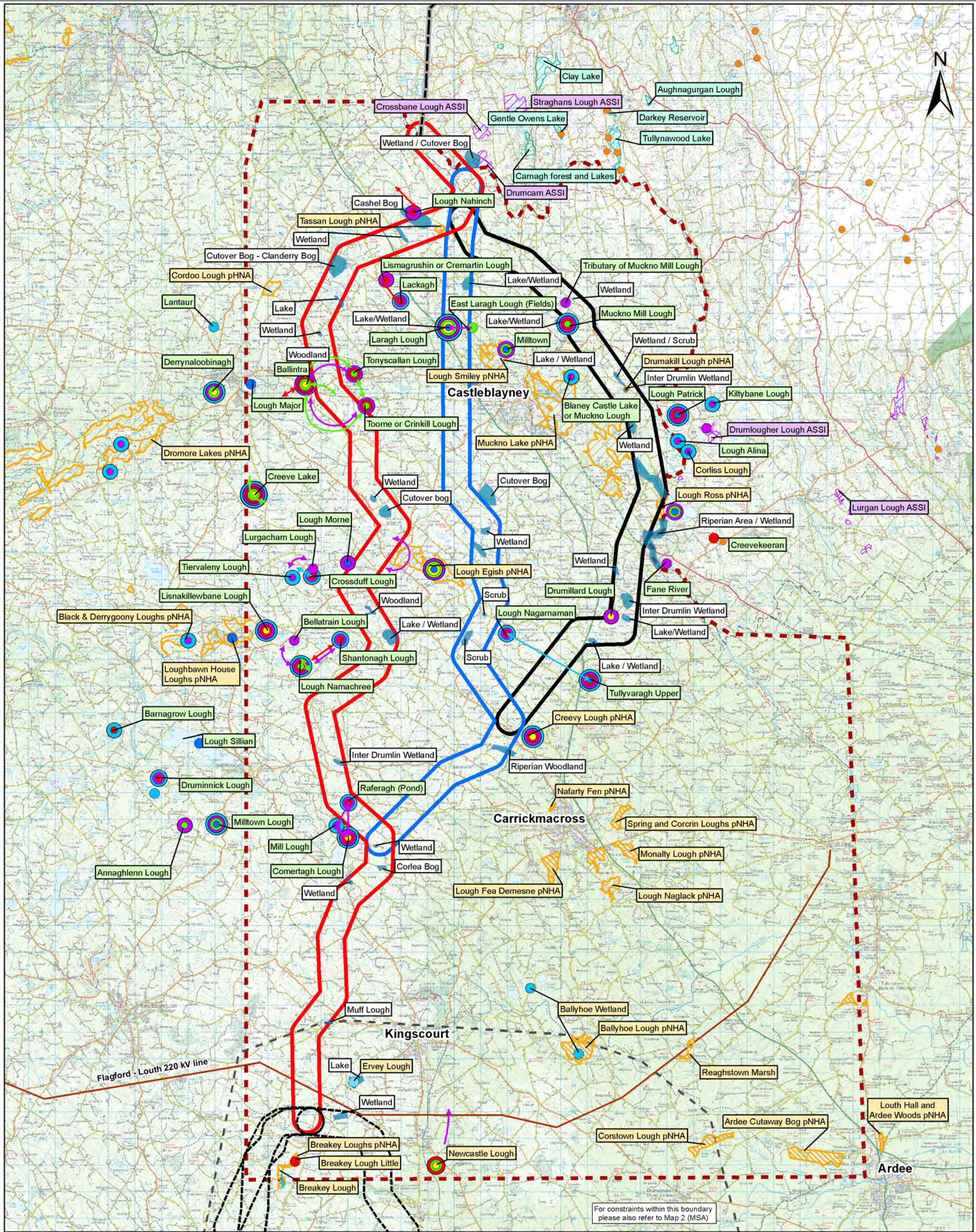
Map 1 (CMSA)

NOTES
1. DISCOVERY SERIES TILES USED: OS2628, OS2630, OS2632, OS2628, OS2630, OS2632
2. SOURCES OF CONSTRAINTS CAN BE FOUND ON INDIVIDUAL MAPS
All rights reserved. No part of this work may be modified or reproduced or copied in any form or by means - graphic, electronic or mechanical, including photocopying, recording, taping, information and retrieval system or used for any purpose other than its designated purpose, without the written permission of ESB International Limited.



Client:
North-South 400 kV
Interconnection Development
Project:
Constraints within the Cavan
-Monaghan Study Area (CMSA)

DRAWN EMcM	CHECKED KC	APPROVED CM	APPD DATE April-13
CLIENT REF	No. of Sheets 1 of 1	SIZE A3	SCALE 1:130,000
DRAWING NUMBER PE687-D141-106-001-000			
 ESBI Engineering Solutions, Stephen Court, 18-21 St. Stephen's Green, Dublin 2, Ireland. Tel: +353 (0)1 703 8000 Fax: +353 (0)1 703 7186 Email: marketing@esbie.com Web: www.esbie.com ESBI Engineering Solutions is a trading name of ESB Engineering & Facility Management Limited. Registered Office: as above Registered in Ireland No. 155249			



Route Corridor A

Route Corridor B

Route Corridor C

Natural Heritage Area/ Proposed Natural Heritage Area

Site of Local Nature Conservation Importance (NI)

Area of Special Scientific Interest (NI)

Green Belt region (NI)

Sensitive Ecological Receptors

Breeding Wader Sites (NI)

Swan Flight Lines 2008/09

Swan Flight Lines 2009/10

Swan Flight Lines 2010/2011

Swan Flight Lines 2011/2012

Historical Swan Site

Swan site recorded in Winter Survey Period 1: 2007/2008

Swan Site recorded in Winter Survey Period 2: 2008/2009

Swan Site recorded in Winter Survey Period 3: 2009/2010

Swan Sites recorded in Winter Survey Period 4 : 2010/2011

Swan Site recorded in Winter Survey Period 5: 2011/2012

Route Corridors 1/2/3A and 3B

Meath Study Area (MSA)

NIE Line Route, Application 0/2009/0792/F

0 0.5 1 2 3 4

Kilometres

Map 2 (CMSA)

NOTES
1. DISCOVERY SERIES TILES USED: OS2628, OS2630, OS2632, OS2636, OS2639, OS2642
2. DESIGNATED CONSERVATION AREAS SOURCED FROM NPWS (ROI) AND AECOM (NI)
3. WHOOPER SWAN DATA BASED ON SITE SURVEYS
All rights reserved. No part of this work may be modified or reproduced or copied in any form or by means - graphic, electronic or mechanical, including photocopying, recording, taping, or information and retrieval system or used for any purpose other than its designated purpose, without the written permission of ESB International Limited.

Client:

Project:

North-South 400 kV Interconnection Development

Title:

Route Corridor Options for the CMSA with the Ecological Constraints of the area

DRAWN EMcM	CHECKED KC	APPROVED CM	APPD DATE April-13
CLIENT REF		No. of Sheets 1 of 1	SIZE A3
DRAWING NUMBER PE687-D141-096-001-000		SCALE 1:130,000	

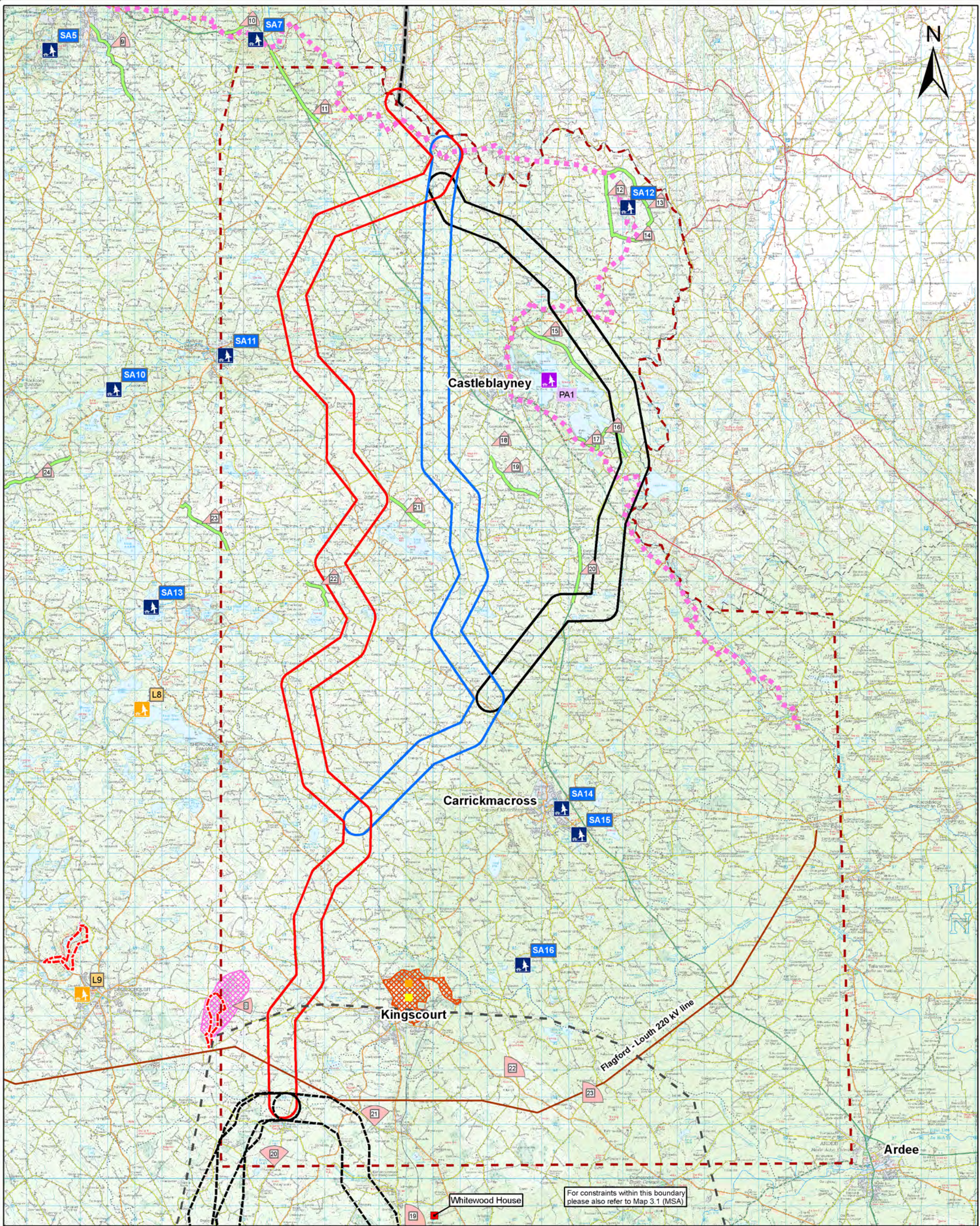
ESB International

ESBI Energy Innovation

ESBI Engineering Solutions, Stephen Court, 18-21 St. Stephen's Green, Dublin 2, Ireland. Tel: +353 (0)1 703 6000 Fax: +353 (0)1 703 7186 Email: marketing@esbi.ie Web: www.esbi.ie

ESBI Engineering Solutions is a trading name of ESB Engineering & Facility Management Limited. Registered Office: as above. Registered in Ireland No. 155240

Ordnance Survey Licence No. EN 0023709-13; Copyright Ordnance Survey Ireland Government of Ireland



- Cavan Monaghan Study Area (CMSA)
- Route Corridor A
- Route Corridor B
- Route Corridor C
- Route Corridors 1/2/3A and 3B
- Meath Study Area (MSA)
- NIE Line Route, Application O/2009/0792/F
- Area of Primary Amenity Value
- Area of Secondary Amenity Value
- Lakeside Amenity Area
- Landmarks (Meath Landscape Character Assessment)
- Forest Park
- Areas of Special Landscape Interest
- Monaghan Way
- Scenic Routes
- Existing Paths and Cycle Routes
- Protected Views & Prospects
- High Landscape Value Area
- Area of Special Landscape Interest

0 0.5 1 2 3 4
Kilometres

Map 3.1 (CMSA)

NOTES:
1. DISCOVERY SERIES TILES USED: OS2628, OS2630, OS2632, OS2628, OS2630, OS2632
2. LANDSCAPE DATA SOURCED FROM COUNTY DEVELOPMENT PLANS

All rights reserved. No part of this work may be modified or reproduced or copied in any form or by means - graphic, electronic or mechanical, including photocopying, recording, taping, or information and retrieval system or used for any purpose other than its designated purpose, without the written permission of ESB International Limited

Client:

EIRGRID

Project:

North-South 400 kV Interconnection Development

Title:

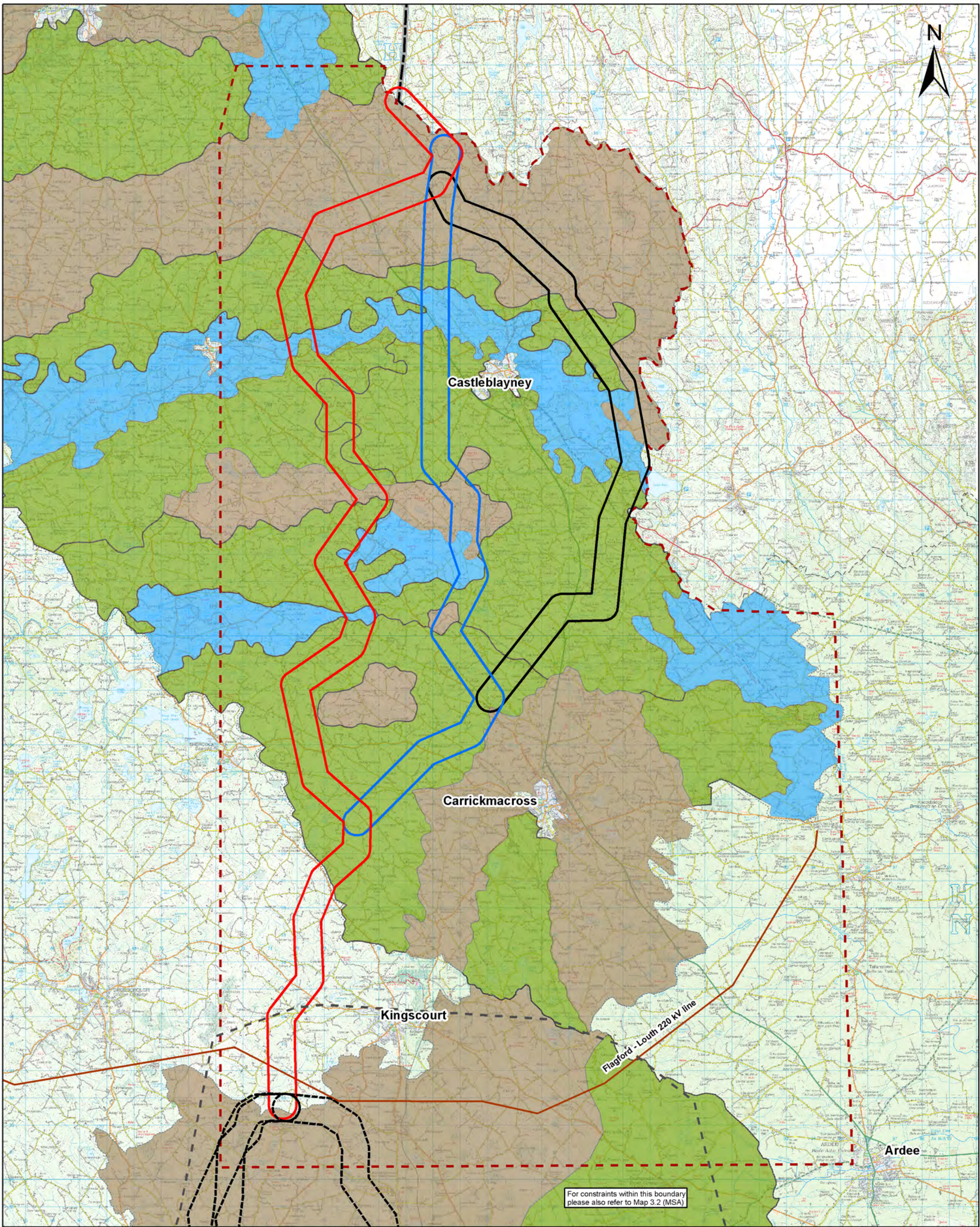
Route Corridor Options for the CMSA with the Landscape constraints of the area

DRAWN EMcM	CHECKED KC	APPROVED CM	APPD DATE April-13
CLIENT REF		No. of Sheets 1 of 1	SIZE A3
DRAWING NUMBER		SCALE 1:130,000	

PE687-D141-097-001-000

ESB International
ESBI Energy Innovation

ESBI Engineering Solutions, Stocken Court, 18-21 St. Stephen's Green, Dublin 2, Ireland. Tel: +353 (0)1 703 8000 Fax: +353 (0)1 703 7186 Email: marketing@esbi.ie Web: www.esbi.ie
ESBI Engineering Solutions is a trading name of ESB Engineering & Facility Management Limited. Registered Office: as above. Registered in Ireland No. 155249



Legend

Cavan Monaghan Study Area (CMSA)

Meath Study Area (MSA)

Route Corridor A

Route Corridor B

Route Corridor C

Route Corridors 1/2/3A and 3B

NIE Line Route, Application O/2009/0792/F

Landscape Character Type

Hills and Upland Area

Lowland Landscapes

River Corridors and Lakelands

0 0.5 1 2 3 4

Kilometres

Map 3.2 (CMSA)

NOTES

1. DISCOVERY SERIES TILES USED: OS2628, OS2630, OS2632, OS2628, OS2630, OS2632

2. LANDSCAPE DATA SOURCED FROM COUNTY DEVELOPMENT PLANS

All rights reserved. No part of this work may be modified or reproduced or copied in any form or by means - graphic, electronic or mechanical, including photocopying, recording, taping, or information and retrieval system or used for any purpose other than its designated purpose, without the written permission of ESB International Limited

Client:

Project:

North-South 400 kV Interconnection Development

Title:

Corridor Options & Landscape Character Types Map

DRAWN	CHECKED	APPROVED	APPD DATE
EMcM	KC	CM	April-13
CLIENT REF		No. of Sheets	SIZE
		1 of 1	A3
DRAWING NUMBER		SHEET REV	
PE687-D141-098-001-000			

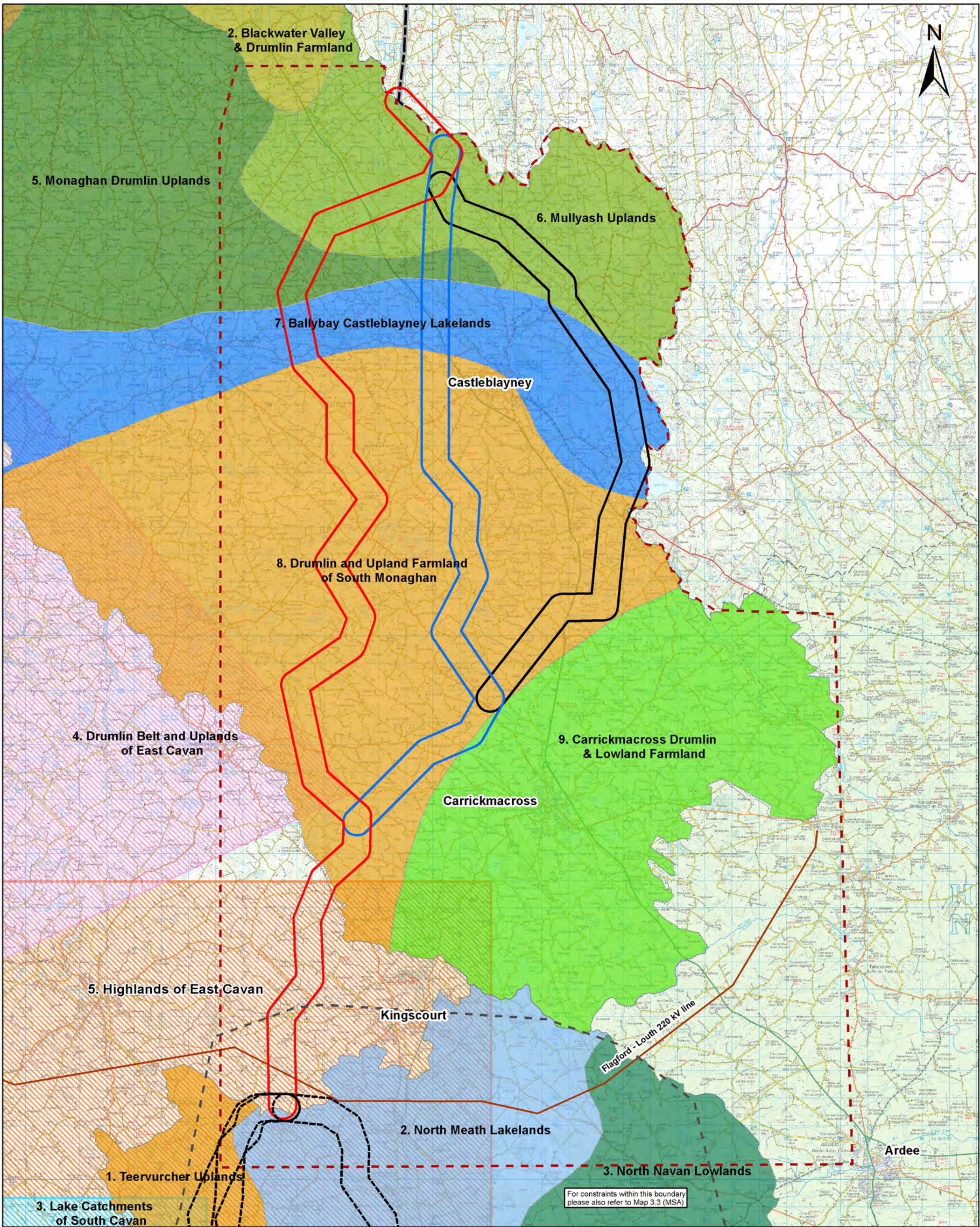
ESB International

ESBI Energy Innovation

ESBI Engineering Solutions, Stocken Court, 18-21 St. Stephen's Green, Dublin 2, Ireland. Tel: +353 (0)1 703 8000 Fax: +353 (0)1 703 7186 Email: marketing@esbi.ie Web: www.esbi.ie

ESBI Engineering Solutions is a trading name of ESB Engineering & Facility Management Limited. Registered Office: as above. Registered in Ireland No. 155249

Ordnance Survey Licence No. EN 0023709-13. Copyright Ordnance Survey Ireland Government of Ireland



Legend

- Cavan Monaghan Study Area (CMSA)
- Meath Study Area (MSA)
- Route Corridor A
- Route Corridor B
- Route Corridor C
- Route Corridors 1/2/3A and 3B
- NIE Line Route, Application O/2009/0792/F

County Cavan Landscape Character Areas

- 3. Lake Catchments of South Cavan
- 4. Drumlin Belt and Uplands of East Cavan
- 5. Highlands of East Cavan

County Monaghan Landscape Character Areas

- 2. Blackwater Valley & Drumlin Farmland
- 5. Monaghan Drumlin Uplands
- 6. Mullyash Uplands
- 7. Ballybay Castleblayney Lakelands
- 8. Drumlin and Upland Farmland of South Monaghan
- 9. Carrickmacross Drumlin & Lowland Farmland

County Meath Landscape Character Areas

- 1. Teervurcher Uplands
- 2. North Meath Lakelands
- 3. North Navan Lowlands

0 0.5 1 2 3 4

Kilometres

Map 3.3 (CMSA)

NOTES:
1. DISCOVERY SERIES TILES USED: OS2628, OS2630, OS2632, OS2628, OS2630, OS2632
2. LANDSCAPE DATA SOURCED FROM COUNTY DEVELOPMENT PLANS

All rights reserved. No part of this work may be modified or reproduced or copied in any form or by means - graphic, electronic or mechanical, including photocopying, recording, taping, or information and retrieval system or used for any purpose other than its designated purpose, without the written permission of ESB International Limited.

Client:

EIRGRID

Project:

North-South 400 kV Interconnection Development

Title:

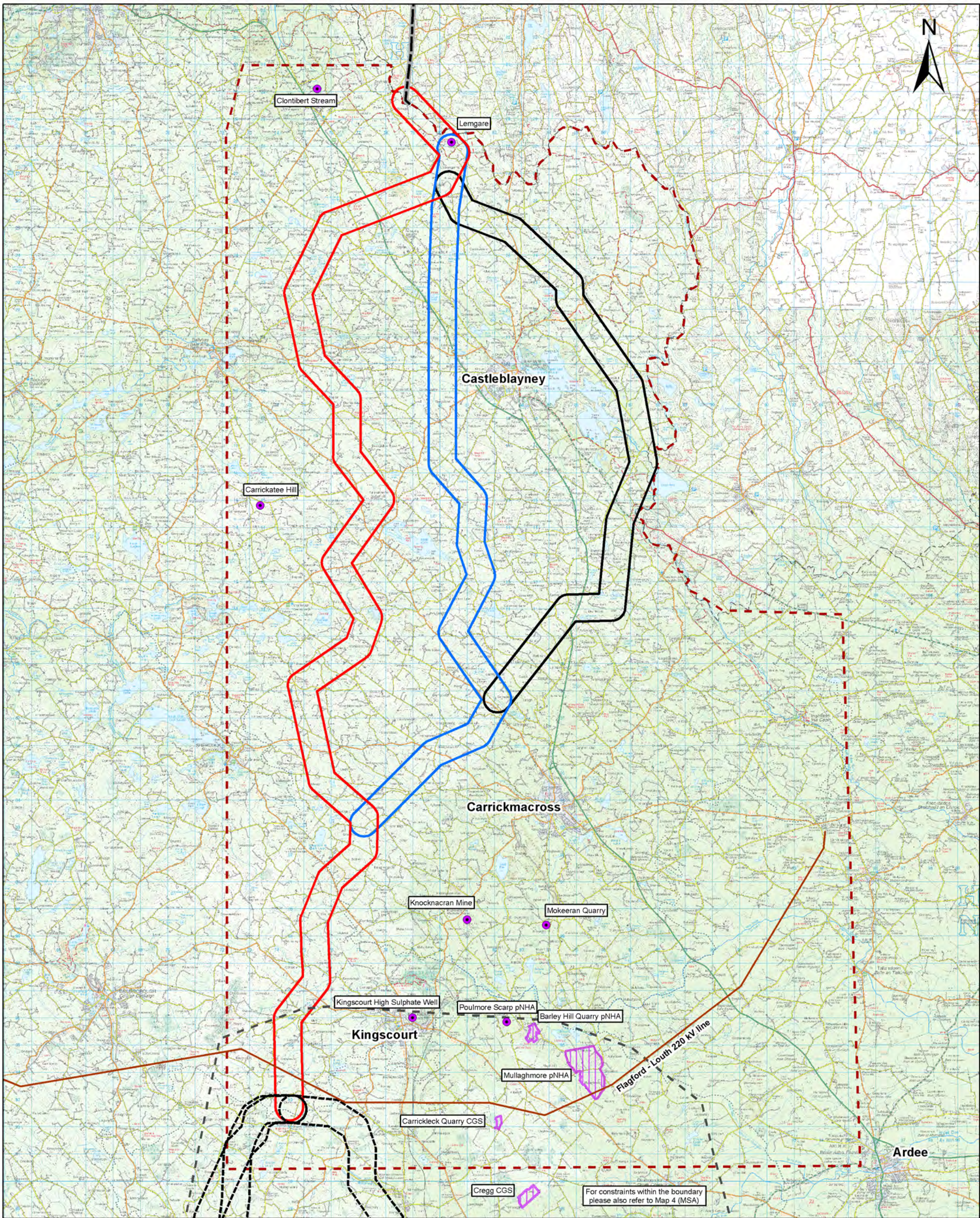
Corridor Options & Landscape Character Areas Map

DRAWN EMcM	CHECKED KC	APPROVED CM	APPD DATE April-13
CLIENT REF		No. of Sheets 1 of 1	SIZE A3
DRAWING NUMBER PE687-D141-099-001-000		SCALE 1:130,000	

ESB International
ESBI Energy Innovation

ESBI Engineering Solutions, 18-21 St. Stephen's Green, Dublin 2, Ireland. Tel: +353 (0)1 703 8000 Fax: +353 (0)1 703 7186 Email: marketing@esbi.ie Web: www.esbi.ie

ESBI Engineering Solutions is a trading name of ESB Engineering & Facility Management Limited. Registered Office: as above. Registered in Ireland No. 155249



Cavan Monaghan Study Area (CMSA)

Route Corridor A

Route Corridor B

Route Corridor C

Geological Interest Site (identified by GSI)

Geological Interest Site (surveyed by GSI)

Meath Study Area (MSA)

Route Corridors 1/2/3A and 3B

NIE Line Route , Application O/2009/0792/F

0 0.5 1 2 3 4

Kilometres

Map 4 (CMSA)

NOTES:
1. DISCOVERY SERIES TILES USED: OS2628, OS2630, OS2632, OS2628, OS2630, OS2632
2. GEOLOGICAL DATA SOURCED FROM GSI

All rights reserved. No part of this work may be modified or reproduced or copied in any form or by means - graphic, electronic or mechanical, including photocopying, recording, taping, or information and retrieval system or used for any purpose other than its designated purpose, without the written permission of ESB International Limited.

Client:

Project:

North-South 400 kV Interconnection Development

Title:

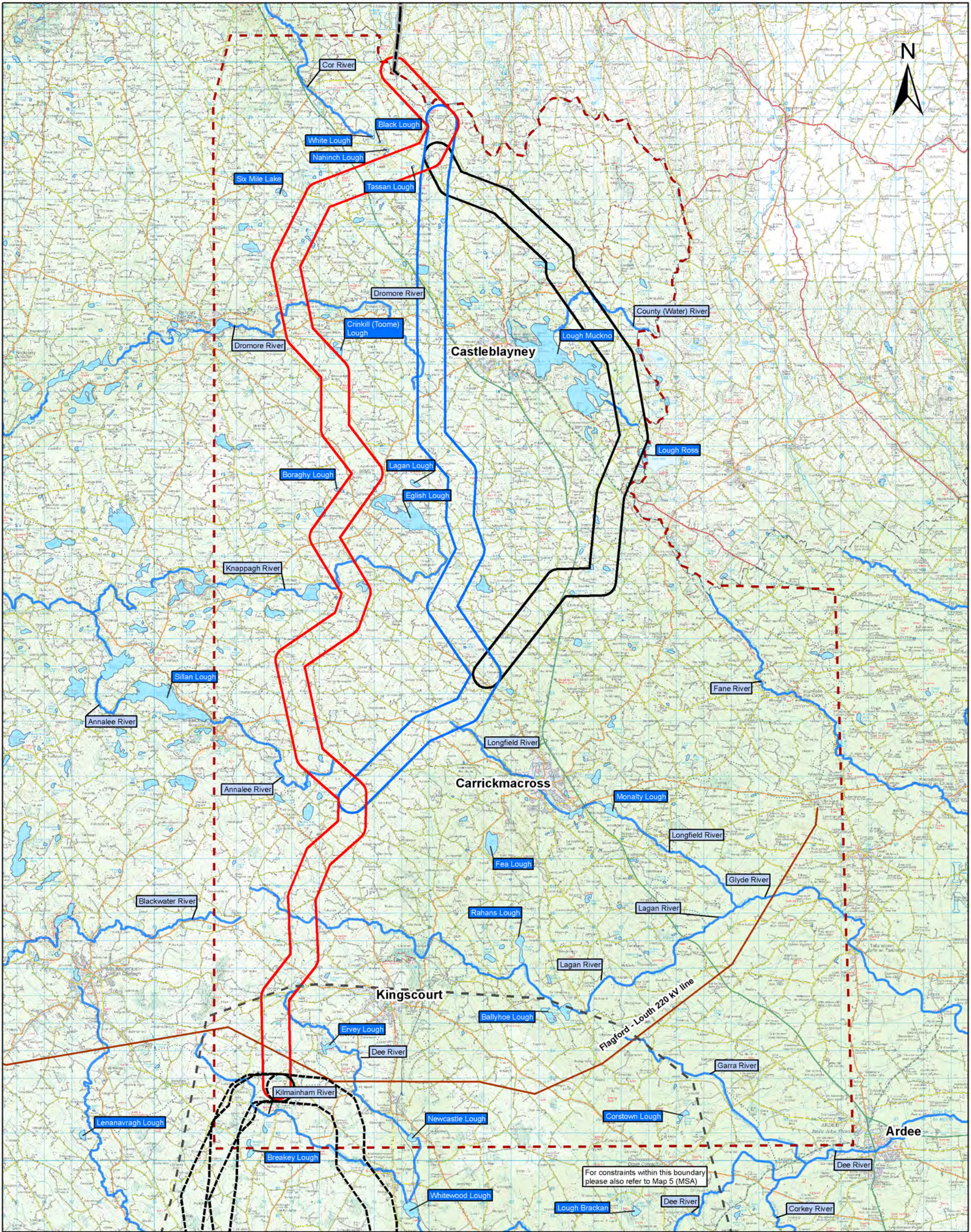
Route Corridor Options for the CMSA with the Geology Constraints of the area

DRAWN	CHECKED	APPROVED	APPD DATE
EMcM	KC	CM	April-13
CLIENT REF	No. of Sheets	SIZE	SCALE
	1 of 1	A3	1:130,000
DRAWING NUMBER	SHEET REV		
	PE687-D141-100-001-000		

ESB International
ESBI Energy Innovation

ESBI Engineering Solutions, Stephen Court, 18-21 St. Stephen's Green, Dublin 2, Ireland. Tel: +353 (0)1 703 8000 Fax: +353 (0)1 703 7186 Email: marketing@esbie.ie Web: www.esbie.ie

ESBI Engineering Solutions is a trading name of ESBI Engineering & Facility Management Limited. Registered Office: as above Registered in Ireland No. 155249



Cavan Monaghan Study Area (CMSA)

Route Corridor A

Route Corridor B

Route Corridor C

Major River

Major Lake / Lough

Route Corridors 1/2/3A and 3B

Meath Study Area (MSA)

NIE Line Route, Application O/2009/0792/F

Major lake in proximity to the study area

Major river in proximity to the study area

00.51234

Kilometres

Map 5 (CMSA)

NOTES:
1. DISCOVERY SERIES TILES USED: OS2628, OS2630, OS2632, OS2628, OS2630, OS2632

All rights reserved. No part of this work may be modified or reproduced or copied in any form or by means - graphic, electronic or mechanical, including photocopying, recording, taping, or information and retrieval system or used for any purpose other than its designated purpose, without the written permission of ESB International Limited

Client:

Project:

North-South 400 kV Interconnection Development

Title:

Route Corridor Options for the CMSA with the Water Constraints of the area

DRAWN

EMcM

CHECKED

KC

APPROVED

CM

APPD DATE

April-13

CLIENT REF

No. of Sheets

1 of 1

SIZE

A3

SCALE

1:130,000

DRAWING NUMBER

PE687-D141-101-001-000

SHEET

1

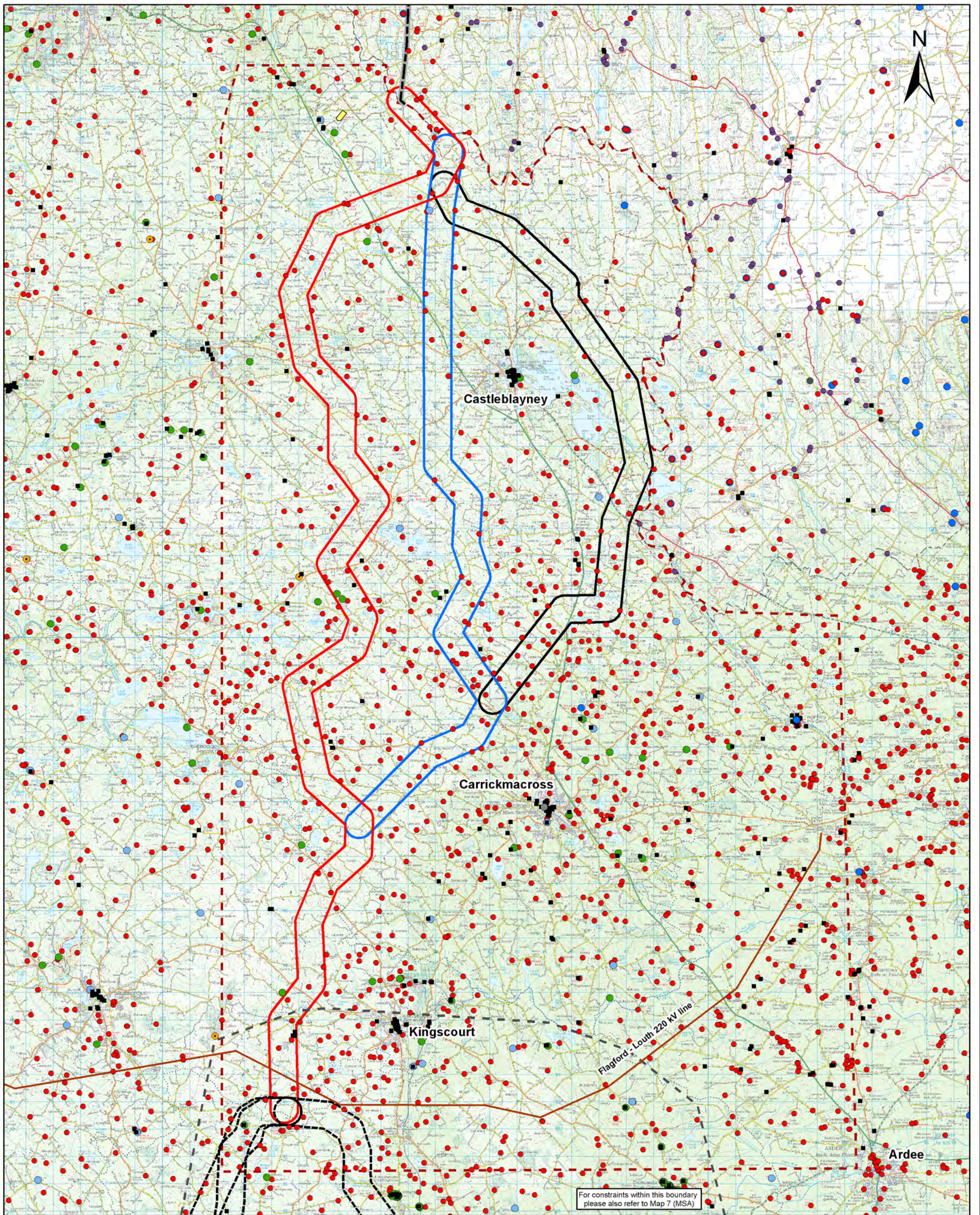
REV

ESB International
ESBI Energy Innovation

ESBI Engineering Solutions, Stephen Court, 18-21 St. Stephen's Green, Dublin 2, Ireland. Tel: +353 (0)1 703 8000 Fax: +353 (0)1 703 7186 Email: marketing@esbi.ie Web: www.esbi.ie

ESBI Engineering Solutions is a trading name of ESB Engineering & Facility Management Limited. Registered Office: as above Registered in Ireland No. 1155245

Ordnance Survey Licence No. EN 3023709-13, Copyright Ordnance Survey Ireland Government of Ireland



Cavan Monaghan Study Area (CMSA)

Route Corridor A

Route Corridor B

Route Corridor C

National Monuments / Scheduled Monuments (NI)

Architectural Conservation Areas

Areas of Significant Archaeological Interest (NI)

Record of Protected Structures / Listed buildings (NI)

Preservation Orders

National Inventory of Architectural Heritage

Potential National Monuments

Industrial Heritage (NI)

RMP sites / SMR sites

Battle of Clontibet Site (1595)

Meath Study Area (MSA)

Route Corridors 1/2/3A and 3B

NIE Line Route, Application O/2009/0792/F

0 0.5 1 2 3 4

Kilometres

Map 7 (CMSA)

NOTES

1. DISCOVERY SERIES TILES USED: 052626, 052630, 052632, 052638, 052639, 052642

2. RMP SITES, NATIONAL MONUMENTS, NATIONAL INVENTORY OF ARCHITECTURAL HERITAGE AND PRESERVATION ORDERS ARE ALL SOURCED FROM THE DEPARTMENT OF ENVIRONMENT, HERITAGE AND LOCAL GOVERNMENT

3. ARCHITECTURAL CONSERVATION AREAS AND PROTECTED STRUCTURES SOURCED FROM THE COUNTY COUNCILS

4. SCHEDULED MONUMENTS, AREAS OF SIGNIFICANT ARCHAEOLOGICAL INTEREST, LISTED BUILDINGS AND INDUSTRIAL HERITAGE SOURCED FROM THE DEPARTMENT OF ENVIRONMENT NORTHERN IRELAND

All rights reserved. No part of this work may be modified or reproduced or copied in any form or by means - graphic, electronic or mechanical, including photocopying, recording, taping, or information and retrieval system or used for any purpose other than its designated purpose, without the written permission of ESB International Limited.

Client:

Project:

North-South 400 kV
Interconnection Development

Title:

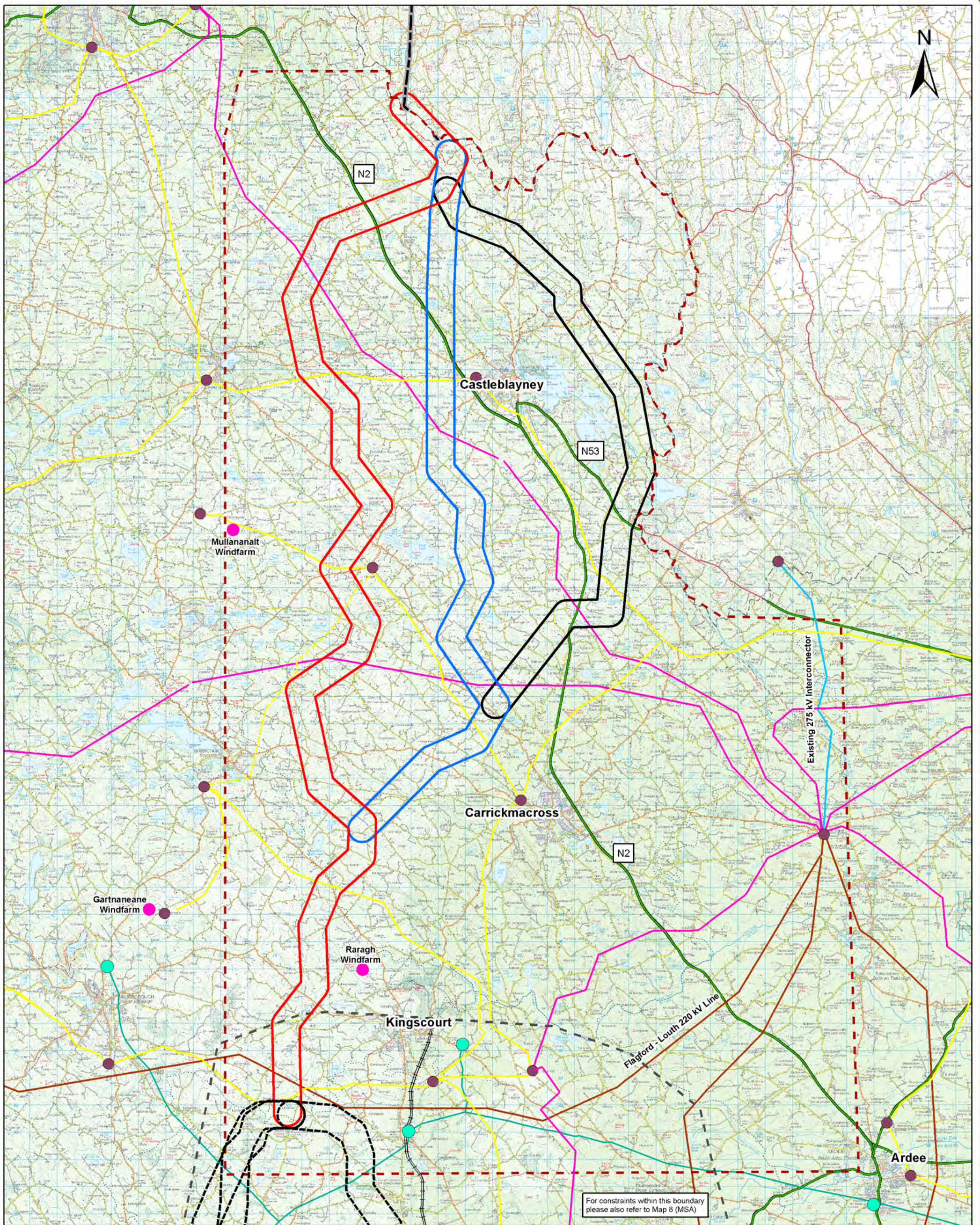
Route corridor options for the CMSA
with the Cultural Heritage Constraints
of the area

DRAWN EMcM	CHECKED KC	APPROVED CM	APPD DATE April-13
CLIENT REF		No. of Sheets 1 of 1	SIZE A3
DRAWING NUMBER PE687-D141-103-001-000		SCALE 1:130,000	

ESB International
ESBI Energy Innovation

ESBI Engineering Solutions, Stephen Court, 18-21 St. Stephen's Green,
Dublin 2, Ireland. Tel: +353 (0)1 703 8000 Fax: +353 (0)1 703 7166
Email: marketing@esbi.ie Web: www.esbi.ie
ESBI Engineering Solutions is a trading name of ESBI Engineering & Facility Management Limited.
Registered Office: 20, Abbot's Cross, Dublin 1, Ireland. Registered in Ireland No. 155249

Ordnance Survey Licence No. EN 0023799-13, Copyright Ordnance Survey Ireland Government of Ireland



- Cavan Monaghan Study Area (CMSA)
- Route Corridor A
- Route Corridor B
- Route Corridor C
- Planning Permission Granted for 38 kV Line
- 38 kV Line
- 110 kV Line
- 220 kV Line
- 275 kV Line
- Gas Pipeline
- National Road
- Railway
- Gas Stations
- Electricity Station
- Windfarm
- Meath Study Area (MSA)
- Route Corridors 1/2/3A and 3B
- NIE Line Route, Application O/2009/0792/F

0 0.5 1 2 3 4
Kilometres

Map 8 (CMSA)

NOTES:
1. DISCOVERY SERIES TILES USED: OS2628, OS2630, OS2632, OS2628, OS2630, OS2632
2. GAS NETWORK SOURCED FROM BORD GÁS
3. POWER NETWORK SOURCED FROM ESB NETWORKS
4. ROADS SOURCED FROM NRA

All rights reserved. No part of this work may be modified or reproduced or copied in any form or by means - graphic, electronic or mechanical, including photocopying, recording, taping, information and retrieval system or used for any purpose other than its designated purpose, without the written permission of ESB International Limited.

Client:



Project:

North-South 400 kV Interconnection Development

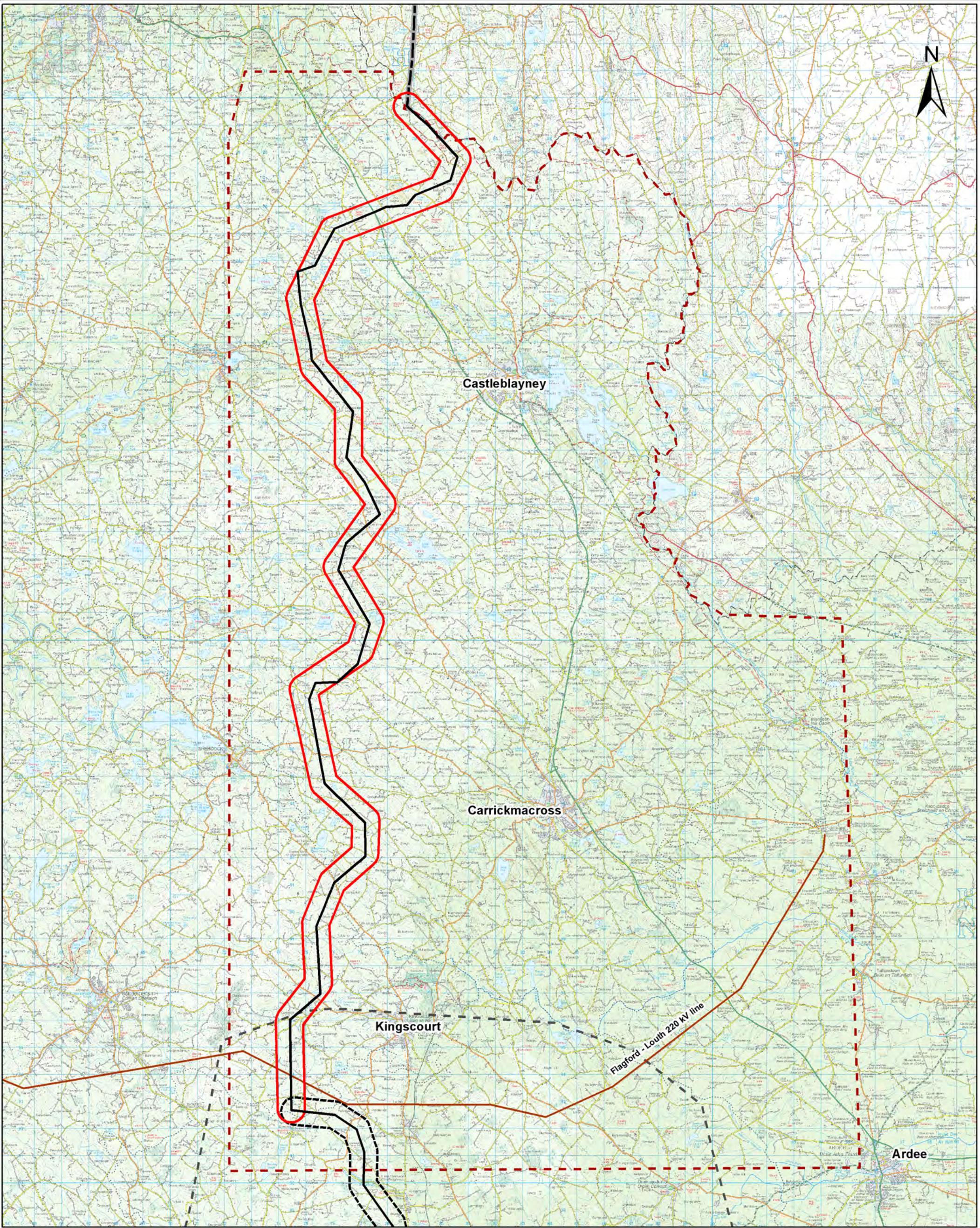
Title:


Route corridor options for the CMSA with the Utilities and Infrastructure Constraints of the area.

DRAWN	CHECKED	APPROVED	APPD DATE
EMcM	KC	CM	April-13
CLIENT REF	No. of Sheets	SIZE	SCALE
	1 of 1	A3	1:130,000
DRAWING NUMBER	SHEET	REV	
PE687-D141-104-001-000			


ESB International
ESBI Energy Innovation

ESBI Engineering Solutions, Stephen Court, 18-21 St. Stephen's Green, Dublin 2, Ireland. Tel: +353 (0)1 703 8000 Fax: +353 (0)1 703 7186 Email: marketing@esbie.ie Web: www.esbie.ie
ESBI Engineering Solutions is a trading name of ESB Engineering & Facility Management Limited. Registered Office: as above Registered in Ireland No. 150240

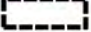





Indicative Line Route (April-13)




Cavan Monaghan Study Area (CMSA)




Route Corridor A



Route Corridor 3B (MSA)



Meath Study Area (MSA)



NIE Line Route, Application O/2009/0792/F

0 0.5 1 2 3 4

Kilometres

Map 9 (CMSA)

Notes:

1. DISCOVERY SERIES TILES USED: OS2628, OS2630, OS2632, OS2626, OS2630, OS2632

All rights reserved. No part of this work may be modified or reproduced or copied in any form or by means - graphic, electronic or mechanical, including photocopying, recording, taping, or information and retrieval system or used for any purpose other than its designated purpose, without the written permission of ESB International Limited.

Client:



Project:

North-South 400 kV Interconnection Development

Title:

Indicative Line Route (CMSA)

DRAWN EMcM	CHECKED KC	APPROVED CM	APPD DATE April-13
CLIENT REF	No. of Sheets 1 of 1	SIZE A3	SCALE 1:130,000
DRAWING NUMBER PE687-D141-105-001-000		SHEET	REV



ESB International
ESBI Energy Innovation

ESBI Engineering Solutions, Stephen Court, 18-21 St. Stephen's Green, Dublin 2, Ireland. Tel: +353 (0)1 703 8000 Fax: +353 (0)1 703 7186 Email: marketing@esbi.ie Web: www.esbi.ie

ESBI Engineering Solutions is a trading name of ESB Engineering & Facility Management Limited. Registered Office: as above Registered in Ireland No. 105249