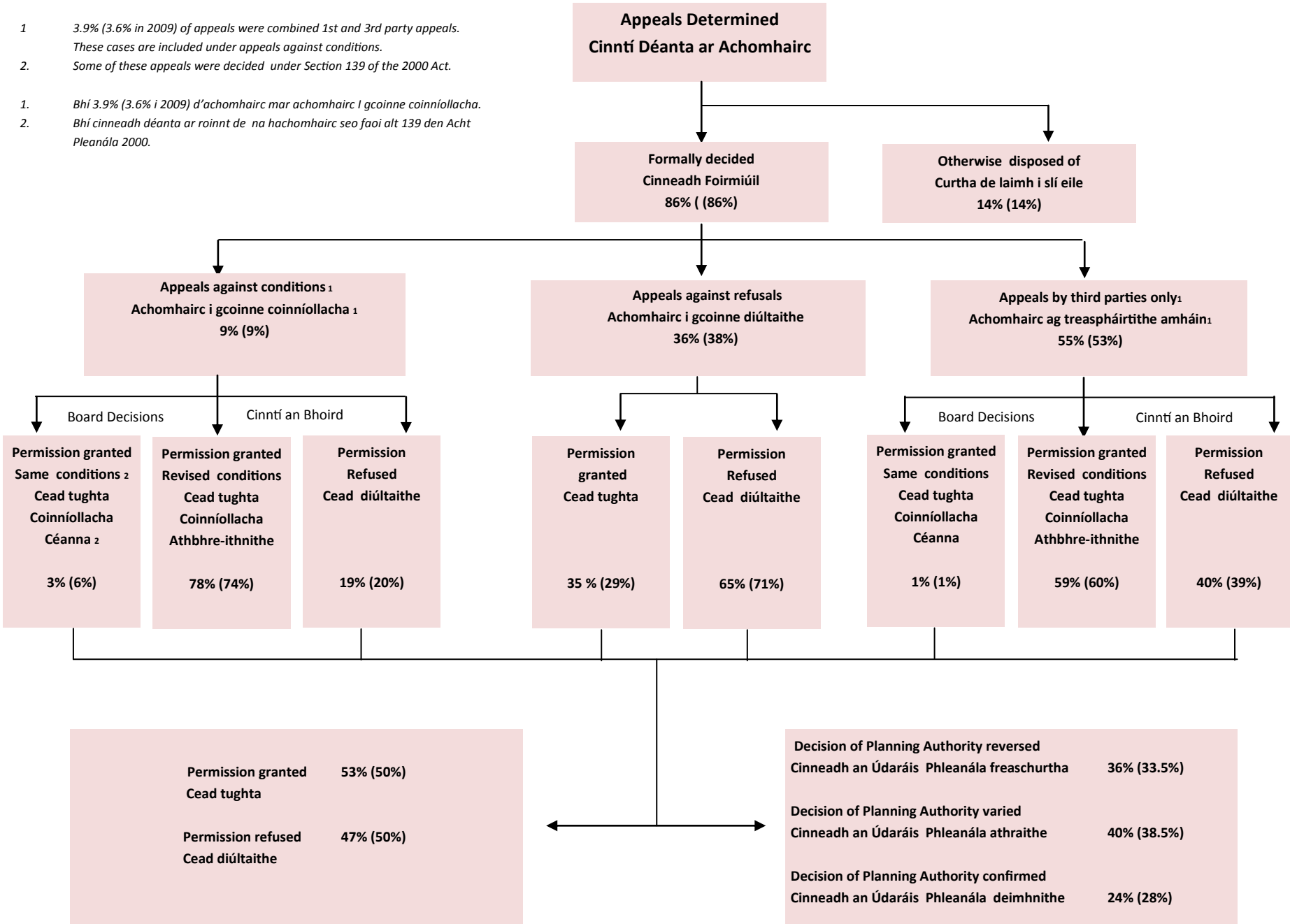


1 3.9% (3.6% in 2009) of appeals were combined 1st and 3rd party appeals. These cases are included under appeals against conditions.

2 Some of these appeals were decided under Section 139 of the 2000 Act.

1 Bhí 3.9% (3.6% i 2009) d'achomhairc mar achomhairc I gcoinne coinníollacha.

2 Bhí cinneadh déanta ar roinnt de na hachomhairc seo faoi alt 139 den Acht Pleanála 2000.

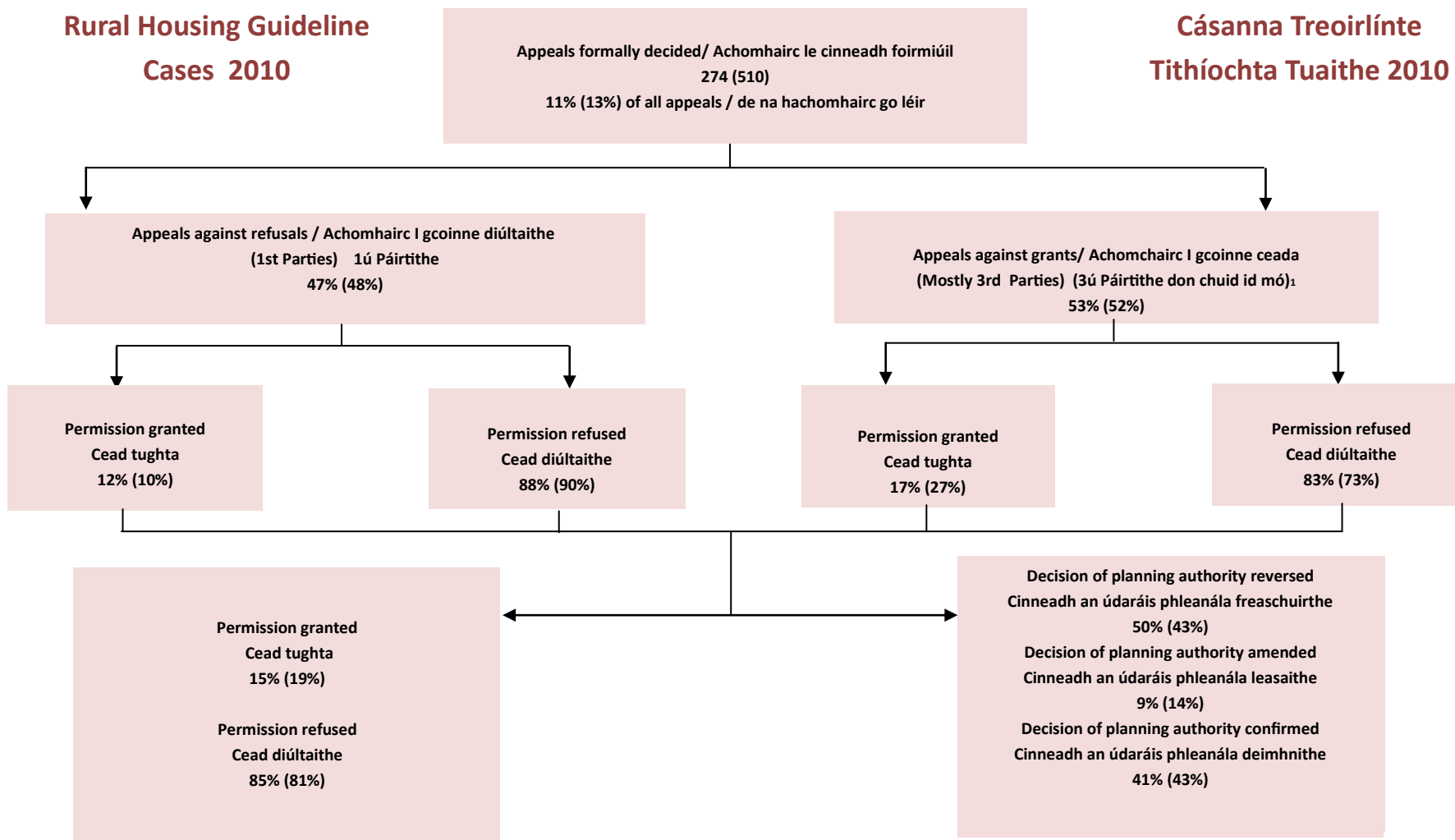


Permission granted Cead tugtha	53% (50%)
Permission refused Cead diúltaithe	47% (50%)

Decision of Planning Authority reversed Cinneadh an Údaráis Phleanála freaschurtha	36% (33.5%)
Decision of Planning Authority varied Cinneadh an Údaráis Phleanála athraithe	40% (38.5%)
Decision of Planning Authority confirmed Cinneadh an Údaráis Phleanála deimhnithe	24% (28%)

Rural Housing Guideline Cases 2010

Cásanna Treoirínite Tithíochta Tuaithe 2010



Area Types (% of cases in each)

Strong Urban Influence (Area 1)
Stronger Rural Areas (Area 2)
Weak rural Areas (Area 3)
Predominantly Dispersed Settlement (Area 4)

Saghas Ceantair (% de chásanna I ngach ceann)

Tionchar Uirbeach Láidir (Ceantar 1)	59% (55%)
Ceantair Tuaithe Níos Láidre (Ceantar 2)	16% (17%)
Ceantair Tuaithe Laga (Ceantar 3)	12% (16%)
Lonnaíocht Scaipthe go príomha (Ceantar 4)	13% (12%)

* some appeals are made by 1st parties against conditions proposed to be attached to grants of permission

* Tá roinnt achomhairc déanta ag 1ú páirtithe I gcoinne coinníollacha molta le bheith curtha le ceadanna tugtha.