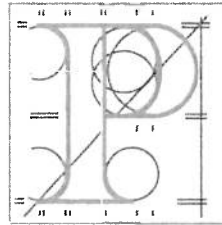


Our Case Number: ABP-322638-25



**An
Coimisiún
Pleanála**

Commission for Railway Regulation
Temple House
Temple Road
Blackrock
Co. Dublin
A94 Y5W5

Date: 27 June 2025

Re: Proposed residential development at the Kishoge Development area of Clonburris SDZ
In the townlands of Kishoge, Esker South, Grange and Balgaddy, Clonburris, County Dublin

Dear Sir / Madam,

An Coimisiún Pleanála has received your recent submission in relation to the above mentioned proposed development and will take it into consideration in its determination of the matter.

Please note that the proposed development shall not be carried out unless the Commission has approved it or approved it with conditions.

If you have any queries in relation to the matter please do not hesitate to contact the undersigned officer of the Commission at laps@pleanala.ie

Please quote the above mentioned An Coimisiún Pleanála reference number in any correspondence or telephone contact with the Commission.

Yours faithfully,

Lauren Griffin
Executive Officer
Direct Line: 01-8737244

JA03

Tel	Tel	(01) 858 8100
Glaó Áitiúil	LoCall	1800 275 175
Facs	Fax	(01) 872 2684
Láithreán Gréasáin	Website	www.pleanala.ie
Ríomhphost	Email	communications@pleanala.ie

64 Sráid Maoilbhríde	64 Marlborough Street
Baile Átha Cliath 1	Dublin 1
D01 V902	D01 V902

AN COIMISIÚN PLEANÁLA	
LDG-	_____
ACP-	_____
25 JUN 2025	
Fee: €	_____ Type: _____
Time: 9:08	By: Post



An Coimisiún Pleanála,
64 Marlborough Street,
Dublin 1

19th June 2025

Re: **23098**

SOUTH DUBLIN COUNTY COUNCIL PART X APPLICATION TO AN BORD PLEANALA – PROPOSED RESIDENTIAL DEVELOPMENT, AT THE KISHOGE DEVELOPMENT AREA OF CLONBURRIS STRATEGY DEVELOPMENT ZONE (SDZ), IN THE TOWNLANDS OF KISHOGE, ESKER SOUTH, GRANGE AND BALGADDY, CLONBURRIS, COUNTY DUBLIN

A chara,

With reference to the proposed project the Commission for Railway Regulation (CRR) makes the following observations for your consideration for the project;

1. Notification of your decision is required to the railway undertaking, namely Iarnród Éireann.
2. Iarnród Éireann should be consulted to ensure that risks associated with railway trespass are not increased near the project either during the works or when the works are complete.
3. The party undertaking the construction should ensure future works which may affect the safe operation of the railway are undertaken with the consultation of Iarnród Éireann and in accordance with CRR Guideline CRR-G-010-A (Third Party Guidance on Railway Risk Volume 1 Planning and Development – available on the CRR website).
4. Observations or issues raised by Iarnród Éireann should be addressed.
5. If permission is granted, the party undertaking the work should consult with Iarnród Éireann regarding road-rail interfaces on access routes which may have increased flow or abnormal loads during the construction phase and upon completion of the project.

Is mise le meas,

A handwritten signature in blue ink, appearing to read 'Mark Nugent'.

Mark Nugent
Inspector
Commission for Railway Regulation