

Belgard Gardens

Tallaght, Dublin

December 2018

o'mahony pike

Response to APB Opinion

Question 2+3: Phase 1



Contents

| | | |
|-----|--|----|
| 2. | STANDARD OF AMENITY PROVIDED TO OCCUPANTS OF THE PROPSOED DEVELOPMENT | |
| 2.1 | Quantitative Standards - HQA | 6 |
| 2.2 | Qualitative Standards | 16 |
| | - Sunlight / Daylight compliance | 16 |
| | - Unit mix | 18 |
| | - Tenant amenities | 20 |
| | - Student facilities | 22 |
| | - Occupant privacy | 24 |
| | - Active frontages | 25 |
| | - Mobility management | 26 |
| | - Amenity Maintenance & Lifecycle | 28 |
| | - Access | 30 |
| 3. | Material / Finishes / Detailing | |
| 3.1 | Material Palette | 34 |
| 3.2 | Detailling | 36 |
| 3.3 | Facade Articulation & Design (previous v updated) | 38 |

2.1 Housing Quality Assessment

| 1722-HOUSING QUALITY ASSESSMENT | | | | | | | | | | | | | | | | | | | | | | |
|---------------------------------|------------------|-------------|-------------|----------------------------|--|--|--------------------------------------|--------|-------------|--|-----------------|------------------|--|---|-------------------------------------|-------------------------------------|---|--|---|---|---|---|
| Apartment Areas - Block | | | | | | | | | | | | | | | | | | | | | | |
| Building | STAIRCORE NUMBER | UNIT NUMBER | FLOOR LEVEL | UNIT DESCRIPTION | MIN UNIT AREA REQUIRED (m ²) | UNITS AREAS > MIN AREA +10%(m ²) | UNIT AREA ACHIEVED (m ²) | ASPECT | ORIENTATION | CEILING HEIGHT (Kitchen/Living/Dining) | No. of Bedrooms | No. of Bedspaces | Aggregate Bedroom Areas Required (m ²) | Aggregate Bedroom Area Achieved (m ²) | Main Living Room Width Required (m) | Main Living Room Width Achieved (m) | Kitchen/Living / Dining Area Required (m ²) | Kitchen/Living /Dining Area Achieved (m ²) | Aggregate Storage Area Required (m ²) | Aggregate Storage Area Achieved (m ²) | Garden/ Terrace/Balcony Area Required (m ²) | Garden/ Terrace/Balcony Area Achieved (m ²) |
| A1 | CORE 1 | 1 | 0 | 1 Bed Apartment (Block A1) | 45 | | 48 | | E | | 1 | 2 | 11.4 | 11.4 | 3.3 | 4.3 | 23 | 25 | 3 | 3 | 5 | 6 |
| A1 | CORE 1 | 2 | 0 | 2 Bed Apartment (Block A1) | 73 | 81.5 | 81.5 | DUAL | W/E | | 2 | 4 | 24.4 | 24.5 | 3.6 | 3.6 | 30 | 32.4 | 6 | 6 | 7 | 7.2 |
| A1 | CORE 1 | 3 | 0 | 2 Bed Apartment (Block A1) | 73 | | 73.2 | | W | | 2 | 4 | 24.4 | 25.2 | 3.6 | 3.6 | 30 | 30.2 | 6 | 6.2 | 7 | 7.2 |
| A1 | CORE 1 | 4 | 0 | 1 Bed Apartment (Block A1) | 45 | | 46.6 | DUAL | N/E | | 1 | 2 | 11.4 | 11.5 | 3.3 | 3.3 | 23 | 23.1 | 3 | 3 | 5 | 8 |
| A1 | CORE 1 | 5 | 0 | 1 Bed Apartment (Block A1) | 45 | | 46.6 | DUAL | N/W | | 1 | 2 | 11.4 | 11.4 | 3.3 | 4.8 | 23 | 23 | 3 | 3.5 | 5 | 8 |
| A1 | CORE 1 | 6 | 1 | 1 Bed Apartment (Block A1) | 45 | 56.2 | 56.2 | | E | | 1 | 2 | 11.4 | 11.4 | 3.3 | 4.3 | 23 | 33 | 3 | 3 | 5 | 7.9 |
| A1 | CORE 1 | 7 | 1 | 2 Bed Apartment (Block A1) | 73 | 81.5 | 81.5 | DUAL | W/E | | 2 | 4 | 24.4 | 24.5 | 3.6 | 3.6 | 30 | 32.4 | 6 | 6 | 7 | 7 |
| A1 | CORE 1 | 8 | 1 | 2 Bed Apartment (Block A1) | 73 | | 73.8 | | W | | 2 | 4 | 24.4 | 25.6 | 3.6 | 3.6 | 30 | 30.1 | 6 | 6 | 7 | 7 |
| A1 | CORE 1 | 9 | 1 | 3 Bed Apartment (Block A1) | 90 | 109 | 109 | DUAL | W/S | | 3 | 6 | 31.5 | 38.9 | 3.8 | 4.9 | 34 | 36 | 9 | 9.7 | 9 | 9 |
| A1 | CORE 1 | 10 | 1 | 2 Bed Apartment (Block A1) | 73 | | 80 | DUAL | S/E | | 2 | 4 | 24.4 | 25.9 | 3.6 | 3.6 | 30 | 32.5 | 6 | 6 | 7 | 13 |
| A1 | CORE 1 | 11 | 1 | 1 Bed Apartment (Block A1) | 45 | 53.3 | 53.3 | | S | | 1 | 2 | 11.4 | 12.4 | 3.3 | 3.59 | 23 | 30 | 3 | 3 | 5 | 5.7 |
| A1 | CORE 1 | 12 | 1 | 2 Bed Apartment (Block A1) | 73 | | 76 | | S | | 2 | 4 | 24.4 | 25.8 | 3.6 | 3.6 | 30 | 31 | 6 | 6.3 | 7 | 7 |
| A1 | CORE 1 | 13 | 1 | 3 Bed Apartment (Block A1) | 90 | 100.2 | 100.2 | DUAL | S/N | | 3 | 6 | 31.5 | 36.2 | 3.8 | 6 | 34 | 34.2 | 9 | 9.1 | 9 | 13.5 |
| A1 | CORE 1 | 14 | 2 | 1 Bed Apartment (Block A1) | 45 | 56.2 | 56.2 | | E | | 1 | 2 | 11.4 | 11.4 | 3.3 | 4.3 | 23 | 33 | 3 | 3 | 5 | 7.9 |
| A1 | CORE 1 | 15 | 2 | 2 Bed Apartment (Block A1) | 73 | 81.5 | 81.5 | DUAL | W/E | | 2 | 4 | 24.4 | 24.5 | 3.6 | 3.6 | 30 | 32.4 | 6 | 6 | 7 | 7 |
| A1 | CORE 1 | 16 | 2 | 2 Bed Apartment (Block A1) | 73 | | 73.8 | | W | | 2 | 4 | 24.4 | 25.6 | 3.6 | 3.6 | 30 | 30.1 | 6 | 6 | 7 | 7 |
| A1 | CORE 1 | 17 | 2 | 3 Bed Apartment (Block A1) | 90 | 109 | 109 | DUAL | W/S | | 3 | 6 | 31.5 | 38.9 | 3.8 | 4.9 | 34 | 36 | 9 | 9.7 | 9 | 9 |
| A1 | CORE 1 | 18 | 2 | 2 Bed Apartment (Block A1) | 73 | | 80 | DUAL | S | | 2 | 4 | 24.4 | 25.9 | 3.6 | 3.6 | 30 | 32.5 | 6 | 6 | 7 | 13 |
| A1 | CORE 1 | 19 | 2 | 1 Bed Apartment (Block A1) | 45 | 53.3 | 53.3 | | S | | 1 | 2 | 11.4 | 12.4 | 3.3 | 3.59 | 23 | 30 | 3 | 3 | 5 | 5.7 |
| A1 | CORE 1 | 20 | 2 | 2 Bed Apartment (Block A1) | 73 | | 76 | | S | | 2 | 4 | 24.4 | 25.8 | 3.6 | 3.6 | 30 | 31 | 6 | 6.3 | 7 | 7 |
| A1 | CORE 1 | 21 | 2 | 3 Bed Apartment (Block A1) | 90 | 100.2 | 100.2 | DUAL | S/N | | 3 | 6 | 31.5 | 36.2 | 3.8 | 6 | 34 | 34.2 | 9 | 9.1 | 9 | 13.5 |
| A1 | CORE 1 | 22 | 3 | 1 Bed Apartment (Block A1) | 45 | 56.2 | 56.2 | | E | | 1 | 2 | 11.4 | 11.4 | 3.3 | 4.3 | 23 | 33 | 3 | 3 | 5 | 7.9 |
| A1 | CORE 1 | 23 | 3 | 2 Bed Apartment (Block A1) | 73 | 81.5 | 81.5 | DUAL | W/E | | 2 | 4 | 24.4 | 24.5 | 3.6 | 3.6 | 30 | 32.4 | 6 | 6 | 7 | 7 |
| A1 | CORE 1 | 24 | 3 | 2 Bed Apartment (Block A1) | 73 | | 74.7 | | W | | 2 | 4 | 24.4 | 25.6 | 3.6 | 3.6 | 30 | 30.1 | 6 | 6 | 7 | 7 |
| A1 | CORE 1 | 25 | 3 | 3 Bed Apartment (Block A1) | 90 | 109 | 109 | DUAL | W/S | | 3 | 6 | 31.5 | 38.9 | 3.8 | 4.9 | 34 | 36 | 9 | 9.7 | 9 | 9 |
| A1 | CORE 1 | 26 | 3 | 2 Bed Apartment (Block A1) | 73 | | 80 | DUAL | S | | 2 | 4 | 24.4 | 25.9 | 3.6 | 3.6 | 30 | 32.5 | 6 | 6 | 7 | 13 |
| A1 | CORE 1 | 27 | 3 | 1 Bed Apartment (Block A1) | 45 | 53.5 | 53.5 | | S | | 1 | 2 | 11.4 | 12.4 | 3.3 | 3.59 | 23 | 30 | 3 | 3 | 5 | 5.7 |
| A1 | CORE 1 | 28 | 3 | 2 Bed Apartment (Block A1) | 73 | | 76 | | S | | 2 | 4 | 24.4 | 25.8 | 3.6 | 3.6 | 30 | 31 | 6 | 6.3 | 7 | 7 |
| A1 | CORE 1 | 29 | 3 | 3 Bed Apartment (Block A1) | 90 | 100.2 | 100.2 | DUAL | S/N | | 3 | 6 | 31.5 | 36.2 | 3.8 | 6 | 34 | 34.2 | 9 | 9.1 | 9 | 13.5 |
| A1 | CORE 1 | 30 | 4 | 1 Bed Apartment (Block A1) | 45 | 56.2 | 56.2 | | E | | 1 | 2 | 11.4 | 11.4 | 3.3 | 4.3 | 23 | 33 | 3 | 3 | 5 | 7.9 |
| A1 | CORE 1 | 31 | 4 | 2 Bed Apartment (Block A1) | 73 | 81.5 | 81.5 | DUAL | W/E | | 2 | 4 | 24.4 | 24.5 | 3.6 | 3.6 | 30 | 32.4 | 6 | 6 | 7 | 7 |
| A1 | CORE 1 | 32 | 4 | 2 Bed Apartment (Block A1) | 73 | | 74.7 | | W | | 2 | 4 | 24.4 | 25.6 | 3.6 | 3.6 | 30 | 30.1 | 6 | 6 | 7 | 7 |
| A1 | CORE 1 | 33 | 4 | 3 Bed Apartment (Block A1) | 90 | 109 | 109 | DUAL | W/S | | 3 | 6 | 31.5 | 38.9 | 3.8 | 4.9 | 34 | 36 | 9 | 9.7 | 9 | 9 |
| A1 | CORE 1 | 34 | 4 | 2 Bed Apartment (Block A1) | 73 | | 80 | DUAL | S/E | | 2 | 4 | 24.4 | 25.9 | 3.6 | 3.6 | 30 | 32.5 | 6 | 6 | 7 | 13 |
| A1 | CORE 1 | 35 | 5 | 1 Bed Apartment (Block A1) | 45 | 56.2 | 56.2 | | E | | 1 | 2 | 11.4 | 11.4 | 3.3 | 4.3 | 23 | 33 | 3 | 3 | 5 | 7.9 |

| | | | | | | | | | | | | | | | | | | | | | | |
|----|--------|----|---|----------------------------|----|------|------|------|-----|--|---|---|------|------|-----|------|----|------|---|-----|---|-----|
| A1 | CORE 1 | 36 | 5 | 2 Bed Apartment (Block A1) | 73 | 81.5 | 81.5 | DUAL | W/E | | 2 | 4 | 24.4 | 24.5 | 3.6 | 3.6 | 30 | 32.4 | 6 | 6 | 7 | 7 |
| A1 | CORE 1 | 37 | 5 | 2 Bed Apartment (Block A1) | 73 | | 74.7 | | W | | 2 | 4 | 24.4 | 25.6 | 3.6 | 3.6 | 30 | 30.1 | 6 | 6 | 7 | 7 |
| A1 | CORE 1 | 38 | 5 | 3 Bed Apartment (Block A1) | 90 | 109 | 109 | DUAL | W/S | | 3 | 6 | 31.5 | 38.9 | 3.8 | 4.9 | 34 | 36 | 9 | 9.7 | 9 | 9 |
| A1 | CORE 1 | 39 | 5 | 2 Bed Apartment (Block A1) | 73 | | 80 | DUAL | S | | 2 | 4 | 24.4 | 25.9 | 3.6 | 3.6 | 30 | 32.5 | 6 | 6 | 7 | 13 |
| A1 | CORE 1 | 40 | 6 | 1 Bed Apartment (Block A1) | 45 | 56.2 | 56.2 | | E | | 1 | 2 | 11.4 | 11.4 | 3.3 | 4.3 | 23 | 33 | 3 | 3 | 5 | 7.9 |
| A1 | CORE 1 | 41 | 6 | 2 Bed Apartment (Block A1) | 73 | 81.5 | 81.5 | DUAL | W/E | | 2 | 4 | 24.4 | 24.5 | 3.6 | 3.6 | 30 | 32.4 | 6 | 6 | 7 | 7 |
| A1 | CORE 1 | 42 | 6 | 2 Bed Apartment (Block A1) | 73 | | 74.7 | | W | | 2 | 4 | 24.4 | 25.6 | 3.6 | 3.6 | 30 | 30.1 | 6 | 6 | 7 | 7 |
| A1 | CORE 1 | 43 | 6 | 3 Bed Apartment (Block A1) | 90 | 109 | 109 | DUAL | W/S | | 3 | 6 | 31.5 | 38.9 | 3.8 | 4.9 | 34 | 36 | 9 | 9.7 | 9 | 9 |
| A1 | CORE 1 | 44 | 6 | 2 Bed Apartment (Block A1) | 73 | | 80 | DUAL | S | | 2 | 4 | 24.4 | 25.9 | 3.6 | 3.6 | 30 | 32.5 | 6 | 6 | 7 | 13 |
| A1 | CORE 2 | 1 | 0 | 2 Bed Apartment (Block A1) | 73 | | 73 | | E | | 2 | 4 | 24.4 | 24.7 | 3.6 | 3.6 | 30 | 30 | 6 | 6.2 | 7 | 7.2 |
| A1 | CORE 2 | 2 | 0 | 2 Bed Apartment (Block A1) | 73 | 82.9 | 82.9 | DUAL | N/E | | 2 | 4 | 24.4 | 25.1 | 3.6 | 4.3 | 30 | 31.7 | 6 | 6.6 | 7 | 7.2 |
| A1 | CORE 2 | 3 | 0 | 1 Bed Apartment (Block A1) | 45 | | 46.8 | DUAL | N/W | | 1 | 2 | 11.4 | 11.4 | 3.3 | 3.35 | 23 | 23.6 | 3 | 3 | 5 | 8.8 |
| A1 | CORE 2 | 4 | 0 | 1 Bed Apartment (Block A1) | 45 | | 46.7 | | W | | 1 | 2 | 11.4 | 11.4 | 3.3 | 3.35 | 23 | 23.6 | 3 | 3 | 5 | 8.8 |
| A1 | CORE 2 | 5 | 0 | 1 Bed Apartment (Block A1) | 45 | | 46.7 | | W | | 1 | 2 | 11.4 | 11.4 | 3.3 | 3.35 | 23 | 23.6 | 3 | 3 | 5 | 8.8 |
| A1 | CORE 2 | 6 | 0 | 1 Bed Apartment (Block A1) | 45 | | 46.4 | | W | | 1 | 2 | 11.4 | 11.4 | 3.3 | 3.35 | 23 | 23.3 | 3 | 3 | 5 | 8.8 |
| A1 | CORE 2 | 7 | 0 | 1 Bed Apartment (Block A1) | 45 | 49.8 | 49.8 | | E | | 1 | 2 | 11.4 | 11.5 | 3.3 | 3.35 | 23 | 26.4 | 3 | 3 | 5 | 8.8 |
| A1 | CORE 2 | 8 | 0 | 2 Bed Apartment (Block A1) | 73 | | 74.3 | | E | | 2 | 4 | 24.4 | 24.9 | 3.6 | 3.6 | 30 | 30.1 | 6 | 6 | 7 | 8.8 |
| A1 | CORE 2 | 9 | 1 | 2 Bed Apartment (Block A1) | 73 | | 73 | | E | | 2 | 4 | 24.4 | 24.7 | 3.6 | 3.6 | 30 | 30 | 6 | 6.2 | 7 | 7.2 |
| A1 | CORE 2 | 10 | 1 | 2 Bed Apartment (Block A1) | 73 | 82.9 | 82.9 | DUAL | N/E | | 2 | 4 | 24.4 | 25.3 | 3.6 | 4.45 | 30 | 31.7 | 6 | 7.5 | 7 | 7.2 |
| A1 | CORE 2 | 11 | 1 | 1 Bed Apartment (Block A1) | 45 | 50 | 50 | DUAL | N/W | | 1 | 2 | 11.4 | 11.4 | 3.3 | 3.35 | 23 | 26.8 | 3 | 3 | 5 | 6 |
| A1 | CORE 2 | 12 | 1 | 1 Bed Apartment (Block A1) | 45 | 50 | 50 | | W | | 1 | 2 | 11.4 | 11.4 | 3.3 | 3.35 | 23 | 26.8 | 3 | 3 | 5 | 6 |
| A1 | CORE 2 | 13 | 1 | 1 Bed Apartment (Block A1) | 45 | 50 | 50 | | W | | 1 | 2 | 11.4 | 11.4 | 3.3 | 3.35 | 23 | 26.8 | 3 | 3 | 5 | 6 |
| A1 | CORE 2 | 14 | 1 | 1 Bed Apartment (Block A1) | 45 | | 49.6 | | W | | 1 | 2 | 11.4 | 11.4 | 3.3 | 3.35 | 23 | 26.8 | 3 | 3 | 5 | 6 |
| A1 | CORE 2 | 15 | 1 | 1 Bed Apartment (Block A1) | 45 | | 49.8 | | E | | 1 | 2 | 11.4 | 11.5 | 3.3 | 3.35 | 23 | 26.8 | 3 | 3 | 5 | 5 |
| A1 | CORE 2 | 16 | 1 | 2 Bed Apartment (Block A1) | 73 | | 73.1 | | E | | 2 | 4 | 24.4 | 24.7 | 3.6 | 3.6 | 30 | 30 | 6 | 6 | 7 | 7.2 |
| A1 | CORE 2 | 17 | 2 | 2 Bed Apartment (Block A1) | 73 | | 73 | DUAL | N/E | | 2 | 4 | 24.4 | 24.7 | 3.6 | 3.6 | 30 | 30 | 6 | 6.2 | 7 | 7.2 |
| A1 | CORE 2 | 18 | 2 | 2 Bed Apartment (Block A1) | 73 | 82.9 | 82.9 | DUAL | N/W | | 2 | 4 | 24.4 | 25.3 | 3.6 | 4.45 | 30 | 31.7 | 6 | 7.5 | 7 | 7.2 |
| A1 | CORE 2 | 19 | 2 | 3 Bed Apartment (Block A1) | 90 | 102 | 102 | | W | | 3 | 6 | 31.5 | 38.4 | 3.8 | 5.1 | 34 | 34.8 | 9 | 9.2 | 9 | 12 |
| A1 | CORE 2 | 20 | 2 | 1 Bed Apartment (Block A1) | 45 | 50 | 50 | | W | | 1 | 2 | 11.4 | 11.4 | 3.3 | 3.35 | 23 | 26.8 | 3 | 3 | 5 | 6 |
| A1 | CORE 2 | 21 | 2 | 1 Bed Apartment (Block A1) | 45 | 50 | 50 | | W | | 1 | 2 | 11.4 | 11.4 | 3.3 | 3.35 | 23 | 26.8 | 3 | 3 | 5 | 6 |
| A1 | CORE 2 | 22 | 2 | 1 Bed Apartment (Block A1) | 45 | 50.2 | 50.2 | | E | | 1 | 2 | 11.4 | 11.5 | 3.3 | 3.35 | 23 | 26.8 | 3 | 3 | 5 | 5 |
| A1 | CORE 2 | 23 | 2 | 2 Bed Apartment (Block A1) | 73 | | 73.1 | | E | | 2 | 4 | 24.4 | 24.7 | 3.6 | 3.6 | 30 | 30 | 6 | 6 | 7 | 7.2 |
| A1 | CORE 2 | 24 | 3 | 2 Bed Apartment (Block A1) | 73 | | 73 | DUAL | N/E | | 2 | 4 | 24.4 | 24.7 | 3.6 | 3.6 | 30 | 30 | 6 | 6.2 | 7 | 7.2 |
| A1 | CORE 2 | 25 | 3 | 2 Bed Apartment (Block A1) | 73 | 82.9 | 82.9 | DUAL | N/W | | 2 | 4 | 24.4 | 25.3 | 3.6 | 4.45 | 30 | 31.7 | 6 | 7.5 | 7 | 7.2 |
| A1 | CORE 2 | 26 | 3 | 3 Bed Apartment (Block A1) | 90 | 102 | 102 | | W | | 3 | 6 | 31.5 | 38.4 | 3.8 | 5.1 | 34 | 34.8 | 9 | 9.2 | 9 | 12 |
| A1 | CORE 2 | 27 | 3 | 1 Bed Apartment (Block A1) | 45 | 50 | 50 | | W | | 1 | 2 | 11.4 | 11.4 | 3.3 | 3.35 | 23 | 26.8 | 3 | 3 | 5 | 6 |
| A1 | CORE 2 | 28 | 3 | 1 Bed Apartment (Block A1) | 45 | 50 | 50 | | W | | 1 | 2 | 11.4 | 11.4 | 3.3 | 3.35 | 23 | 26.8 | 3 | 3 | 5 | 6 |
| A1 | CORE 2 | 29 | 3 | 1 Bed Apartment (Block A1) | 45 | 50.2 | 50.2 | | E | | 1 | 2 | 11.4 | 11.5 | 3.3 | 3.35 | 23 | 26.8 | 3 | 3 | 5 | 5 |
| A1 | CORE 2 | 30 | 3 | 2 Bed Apartment (Block A1) | 73 | | 73.1 | | E | | 2 | 4 | 24.4 | 24.7 | 3.6 | 3.6 | 30 | 30 | 6 | 6 | 7 | 7.2 |
| A1 | CORE 2 | 31 | 4 | 2 Bed Apartment (Block A1) | 73 | | 73 | DUAL | N/E | | 2 | 4 | 24.4 | 24.7 | 3.6 | 3.6 | 30 | 30 | 6 | 6.2 | 7 | 7.2 |
| A1 | CORE 2 | 32 | 4 | 2 Bed Apartment (Block A1) | 73 | 82.9 | 82.9 | DUAL | N/W | | 2 | 4 | 24.4 | 25.3 | 3.6 | 4.45 | 30 | 31.7 | 6 | 7.5 | 7 | 7.2 |
| A1 | CORE 2 | 33 | 4 | 3 Bed Apartment (Block A1) | 90 | 102 | 102 | | W | | 3 | 6 | 31.5 | 38.4 | 3.8 | 5.1 | 34 | 34.8 | 9 | 9.2 | 9 | 12 |
| A1 | CORE 2 | 34 | 4 | 1 Bed Apartment (Block A1) | 45 | 50 | 50 | | W | | 1 | 2 | 11.4 | 11.4 | 3.3 | 3.35 | 23 | 26.8 | 3 | 3 | 5 | 6 |
| A1 | CORE 2 | 35 | 4 | 1 Bed Apartment (Block A1) | 45 | 50 | 50 | | W | | 1 | 2 | 11.4 | 11.4 | 3.3 | 3.35 | 23 | 26.8 | 3 | 3 | 5 | 6 |
| A1 | CORE 2 | 36 | 4 | 1 Bed Apartment (Block A1) | 45 | 50.2 | 50.2 | | E | | 1 | 2 | 11.4 | 11.5 | 3.3 | 3.35 | 23 | 26.8 | 3 | 3 | 5 | 5 |
| A1 | CORE 2 | 37 | 4 | 2 Bed Apartment (Block A1) | 73 | | 73.1 | | E | | 2 | 4 | 24.4 | 24.7 | 3.6 | 3.6 | 30 | 30 | 6 | 6 | 7 | 7.2 |
| A1 | CORE 2 | 38 | 5 | 2 Bed Apartment (Block A1) | 73 | | 73 | DUAL | N/E | | 2 | 4 | 24.4 | 24.7 | 3.6 | 3.6 | 30 | 30 | 6 | 6.2 | 7 | 7.2 |
| A1 | CORE 2 | 39 | 5 | 2 Bed Apartment (Block A1) | 73 | 82.9 | 82.9 | DUAL | N/W | | 2 | 4 | 24.4 | 25.3 | 3.6 | 4.45 | 30 | 31.7 | 6 | 7.5 | 7 | 7.2 |
| A1 | CORE 2 | 40 | 5 | 3 Bed Apartment (Block A1) | 90 | 102 | 102 | | W | | 3 | 6 | 31.5 | 38.4 | 3.8 | 5.1 | 34 | 34.8 | 9 | 9.2 | 9 | 12 |
| A1 | CORE 2 | 41 | 5 | 1 Bed Apartment (Block A1) | 45 | 50 | 50 | | W | | 1 | 2 | 11.4 | 11.4 | 3.3 | 3.35 | 23 | 26.8 | 3 | 3 | 5 | 6 |
| A1 | CORE 2 | 42 | 5 | 1 Bed Apartment (Block A1) | 45 | 50 | 50 | | W | | 1 | 2 | 11.4 | 11.4 | 3.3 | 3.35 | 23 | 26.8 | 3 | 3 | 5 | 6 |
| A1 | CORE 2 | 43 | 5 | 1 Bed Apartment (Block A1) | 45 | 50.2 | 50.2 | | E | | 1 | 2 | 11.4 | 11.5 | 3.3 | 3.35 | 23 | 26.8 | 3 | 3 | 5 | 5 |
| A1 | CORE 2 | 44 | 5 | 2 Bed Apartment (Block A1) | 73 | | 73.1 | | E | | 2 | 4 | 24.4 | 24.7 | 3.6 | 3.6 | 30 | 30 | 6 | 6 | 7 | 7.2 |
| A2 | CORE 3 | 1 | 0 | 2 Bed Apartment (Block A2) | 73 | | 76 | | E | | 2 | 4 | 24.4 | 24.4 | 3.6 | 3.9 | 30 | 30.3 | 6 | 6 | 7 | 7.2 |
| A2 | CORE 3 | 2 | 0 | 1 Bed Apartment (Block A2) | 45 | | 47 | | E | | 1 | 2 | 11.4 | 11.4 | 3.3 | 3.6 | 23 | 23.9 | 3 | 3 | 5 | 7.2 |
| A2 | CORE 3 | 3 | 0 | 2 Bed Apartment (Block A2) | 73 | | 75.2 | | E | | 2 | 4 | 24.4 | 25.4 | 3.6 | 3.6 | 30 | 30.7 | 6 | 6.7 | 7 | 7.2 |
| A2 | CORE 3 | 4 | 0 | 2 Bed Apartment (Block A2) | 73 | | 74.4 | | W | | 2 | 4 | 24.4 | 25.5 | 3.6 | 3.6 | 30 | 30 | 6 | 6.3 | 7 | 7.2 |
| A2 | CORE 3 | 5 | 0 | 2 Bed Apartment (Block A2) | 73 | | 75.2 | | W | | 2 | 4 | 24.4 | 25.4 | 3.6 | 3.6 | 30 | 30.2 | 6 | 6.7 | 7 | 7.2 |

| 1722-HOUSING QUALITY ASSESSMENT | | | | | | | | | | | | | | | | | | | | | | |
|---------------------------------|------------------|-------------|-------------|----------------------------|--|--|--------------------------------------|--------|-------------|--|-----------------|------------------|--|---|-------------------------------------|-------------------------------------|---|--|---|---|---|---|
| Apartment Areas - Block | | | | | | | | | | | | | | | | | | | | | | |
| Building | STAIRCORE NUMBER | UNIT NUMBER | FLOOR LEVEL | UNIT DESCRIPTION | MIN UNIT AREA REQUIRED (m ²) | UNITS AREAS > MIN AREA +10%(m ²) | UNIT AREA ACHIEVED (m ²) | ASPECT | ORIENTATION | CEILING HEIGHT (Kitchen/Living/Dining) | No. of Bedrooms | No. of Bedspaces | Aggregate Bedroom Areas Required (m ²) | Aggregate Bedroom Area Achieved (m ²) | Main Living Room Width Required (m) | Main Living Room Width Achieved (m) | Kitchen/Living / Dining Area Required (m ²) | Kitchen/Living /Dining Area Achieved (m ²) | Aggregate Storage Area Required (m ²) | Aggregate Storage Area Achieved (m ²) | Garden/ Terrace/Balcony Area Required (m ²) | Garden/ Terrace/Balcony Area Achieved (m ²) |
| A2 | CORE 3 | 6 | 0 | 2 Bed Apartment (Block A2) | 73 | | 73 | | W | | 2 | 4 | 24.4 | 24.6 | 3.6 | 3.6 | 30 | 30 | 6 | 6.1 | 7 | 7.2 |
| A2 | CORE 3 | 7 | 0 | 1 Bed Apartment (Block A2) | 45 | | 46.6 | DUAL | N/E | | 1 | 2 | 11.4 | 11.5 | 3.3 | 3.3 | 23 | 23.1 | 3 | 3 | 5 | 8 |
| A2 | CORE 3 | 8 | 0 | 1 Bed Apartment (Block A2) | 45 | | 46.6 | DUAL | N/W | | 1 | 2 | 11.4 | 11.4 | 3.3 | 4.8 | 23 | 23 | 3 | 3.5 | 5 | 8 |
| A2 | CORE 3 | 9 | 1 | 2 Bed Apartment (Block A2) | 73 | | 79.2 | | E | | 2 | 4 | 24.4 | 25.9 | 3.6 | 4 | 30 | 32.1 | 6 | 6 | 7 | 7.9 |
| A2 | CORE 3 | 10 | 1 | 1 Bed Apartment (Block A2) | 45 | 51.2 | 51.2 | | E | | 1 | 2 | 11.4 | 11.4 | 3.3 | 3.6 | 23 | 30 | 3 | 3 | 5 | 7.9 |
| A2 | CORE 3 | 11 | 1 | 2 Bed Apartment (Block A2) | 73 | | 75.2 | | E | | 2 | 4 | 24.4 | 25.6 | 3.6 | 3.6 | 30 | 30.1 | 6 | 6.6 | 7 | 8.5 |
| A2 | CORE 3 | 12 | 1 | 2 Bed Apartment (Block A2) | 73 | 81.9 | 81.9 | DUAL | W/E | | 2 | 4 | 24.4 | 24.8 | 3.6 | 3.6 | 30 | 32.2 | 6 | 6 | 7 | 7 |
| A2 | CORE 3 | 13 | 1 | 2 Bed Apartment (Block A2) | 73 | | 74.5 | | W | | 2 | 4 | 24.4 | 25.5 | 3.6 | 3.6 | 30 | 30.1 | 6 | 6.1 | 7 | 7.3 |
| A2 | CORE 3 | 14 | 1 | 2 Bed Apartment (Block A2) | 73 | | 75.1 | | W | | 2 | 4 | 24.4 | 25.5 | 3.6 | 3.6 | 30 | 30.1 | 6 | 6.6 | 7 | 7.4 |
| A2 | CORE 3 | 15 | 1 | 2 Bed Apartment (Block A2) | 73 | | 73.9 | | W | | 2 | 4 | 24.4 | 25.5 | 3.6 | 3.6 | 30 | 30.1 | 6 | 6.6 | 7 | 7.4 |
| A2 | CORE 3 | 16 | 1 | 3 Bed Apartment (Block A2) | 90 | 108.7 | 108.7 | DUAL | W/S | | 3 | 6 | 31.5 | 38.1 | 3.8 | 4.9 | 34 | 36.7 | 9 | 10.2 | 9 | 9 |
| A2 | CORE 3 | 17 | 1 | 2 Bed Apartment (Block A2) | 73 | 80.3 | 80.3 | DUAL | S/E | | 2 | 4 | 24.4 | 25.5 | 3.6 | 3.6 | 30 | 35.6 | 6 | 6.9 | 7 | 13 |
| A2 | CORE 3 | 18 | 1 | 1 Bed Apartment (Block A2) | 45 | 53.3 | 53.3 | | S | | 1 | 2 | 11.4 | 12.4 | 3.3 | 3.59 | 23 | 29.5 | 3 | 3.1 | 5 | 6.7 |
| A2 | CORE 3 | 19 | 1 | 2 Bed Apartment (Block A2) | 73 | | 76 | | S | | 2 | 4 | 24.4 | 25.5 | 3.6 | 3.6 | 30 | 31 | 6 | 6.3 | 7 | 6.7 |
| A2 | CORE 3 | 20 | 1 | 3 Bed Apartment (Block A2) | 90 | 100.2 | 100.2 | DUAL | S/E/W | | 3 | 6 | 31.5 | 36.2 | 3.8 | 6 | 34 | 34.2 | 9 | 9.1 | 9 | 13.2 |
| A2 | CORE 3 | 21 | 2 | 2 Bed Apartment (Block A2) | 73 | | 79.2 | | E | | 2 | 4 | 24.4 | 25.9 | 3.6 | 4 | 30 | 32.1 | 6 | 6 | 7 | 7.9 |
| A2 | CORE 3 | 22 | 2 | 1 Bed Apartment (Block A2) | 45 | 51.2 | 51.2 | | E | | 1 | 2 | 11.4 | 11.4 | 3.3 | 3.6 | 23 | 30 | 3 | 3 | 5 | 7.9 |
| A2 | CORE 3 | 23 | 2 | 2 Bed Apartment (Block A2) | 73 | | 75.2 | | E | | 2 | 4 | 24.4 | 25.6 | 3.6 | 3.6 | 30 | 30.1 | 6 | 6.6 | 7 | 8.5 |
| A2 | CORE 3 | 24 | 2 | 2 Bed Apartment (Block A2) | 73 | 81.9 | 81.9 | DUAL | W/E | | 2 | 4 | 24.4 | 24.8 | 3.6 | 3.6 | 30 | 32.2 | 6 | 6 | 7 | 7 |
| A2 | CORE 3 | 25 | 2 | 2 Bed Apartment (Block A2) | 73 | | 74.5 | | W | | 2 | 4 | 24.4 | 25.5 | 3.6 | 3.6 | 30 | 30.1 | 6 | 6.1 | 7 | 7.3 |
| A2 | CORE 3 | 26 | 2 | 2 Bed Apartment (Block A2) | 73 | | 75.1 | | W | | 2 | 4 | 24.4 | 25.5 | 3.6 | 3.6 | 30 | 30.1 | 6 | 6.6 | 7 | 7.4 |
| A2 | CORE 3 | 27 | 2 | 2 Bed Apartment (Block A2) | 73 | | 73.9 | | W | | 2 | 4 | 24.4 | 25.5 | 3.6 | 3.6 | 30 | 30.1 | 6 | 6.6 | 7 | 7.4 |
| A2 | CORE 3 | 28 | 2 | 3 Bed Apartment (Block A2) | 90 | 108.7 | 108.7 | DUAL | W/S | | 3 | 6 | 31.5 | 38.1 | 3.8 | 4.9 | 34 | 36.7 | 9 | 10.2 | 9 | 9 |
| A2 | CORE 3 | 29 | 2 | 2 Bed Apartment (Block A2) | 73 | 80.3 | 80.3 | DUAL | S/E | | 2 | 4 | 24.4 | 25.5 | 3.6 | 3.6 | 30 | 35.6 | 6 | 6.9 | 7 | 13 |
| A2 | CORE 3 | 30 | 2 | 1 Bed Apartment (Block A2) | 45 | 53.3 | 53.3 | | S | | 1 | 2 | 11.4 | 12.4 | 3.3 | 3.59 | 23 | 29.5 | 3 | 3.1 | 5 | 6.7 |
| A2 | CORE 3 | 31 | 2 | 2 Bed Apartment (Block A2) | 73 | | 76 | | S | | 2 | 4 | 24.4 | 25.5 | 3.6 | 3.6 | 30 | 31 | 6 | 6.3 | 7 | 6.7 |
| A2 | CORE 3 | 32 | 2 | 3 Bed Apartment (Block A2) | 90 | 100.2 | 100.2 | DUAL | S/E/W | | 3 | 6 | 31.5 | 36.2 | 3.8 | 6 | 34 | 34.2 | 9 | 9.1 | 9 | 13.2 |
| A2 | CORE 3 | 33 | 3 | 2 Bed Apartment (Block A2) | 73 | | 79.2 | | E | | 2 | 4 | 24.4 | 25.9 | 3.6 | 4 | 30 | 32.1 | 6 | 6 | 7 | 7.9 |
| A2 | CORE 3 | 34 | 3 | 1 Bed Apartment (Block A2) | 45 | 51.2 | 51.2 | | E | | 1 | 2 | 11.4 | 11.4 | 3.3 | 3.6 | 23 | 30 | 3 | 3 | 5 | 7.9 |
| A2 | CORE 3 | 35 | 3 | 2 Bed Apartment (Block A2) | 73 | | 75.2 | | E | | 2 | 4 | 24.4 | 25.6 | 3.6 | 3.6 | 30 | 30.1 | 6 | 6.6 | 7 | 8.5 |
| A2 | CORE 3 | 36 | 3 | 2 Bed Apartment (Block A2) | 73 | 81.9 | 81.9 | DUAL | W/E | | 2 | 4 | 24.4 | 24.8 | 3.6 | 3.6 | 30 | 32.2 | 6 | 6 | 7 | 7 |
| A2 | CORE 3 | 37 | 3 | 2 Bed Apartment (Block A2) | 73 | | 74.5 | | W | | 2 | 4 | 24.4 | 25.5 | 3.6 | 3.6 | 30 | 30.1 | 6 | 6.1 | 7 | 7.3 |
| A2 | CORE 3 | 38 | 3 | 2 Bed Apartment (Block A2) | 73 | | 75.1 | | W | | 2 | 4 | 24.4 | 25.5 | 3.6 | 3.6 | 30 | 30.1 | 6 | 6.6 | 7 | 7.4 |
| A2 | CORE 3 | 39 | 3 | 2 Bed Apartment (Block A2) | 73 | | 73.9 | | W | | 2 | 4 | 24.4 | 25.5 | 3.6 | 3.6 | 30 | 30.1 | 6 | 6.6 | 7 | 7.4 |
| A2 | CORE 3 | 40 | 3 | 3 Bed Apartment (Block A2) | 90 | 108.7 | 108.7 | DUAL | W/S | | 3 | 6 | 31.5 | 38.1 | 3.8 | 4.9 | 34 | 36.7 | 9 | 10.2 | 9 | 9 |
| A2 | CORE 3 | 41 | 3 | 2 Bed Apartment (Block A2) | 73 | 80.3 | 80.3 | DUAL | S/E | | 2 | 4 | 24.4 | 25.5 | 3.6 | 3.6 | 30 | 35.6 | 6 | 6.9 | 7 | 13 |
| A2 | CORE 3 | 42 | 3 | 1 Bed Apartment (Block A2) | 45 | 53.3 | 53.3 | | S | | 1 | 2 | 11.4 | 12.4 | 3.3 | 3.59 | 23 | 29.5 | 3 | 3.1 | 5 | 6.7 |
| A2 | CORE 3 | 43 | 3 | 2 Bed Apartment (Block A2) | 73 | | 76 | | S | | 2 | 4 | 24.4 | 25.5 | 3.6 | 3.6 | 30 | 31 | 6 | 6.3 | 7 | 6.7 |
| A2 | CORE 3 | 44 | 3 | 3 Bed Apartment (Block A2) | 90 | 100.2 | 100.2 | DUAL | S/E/W | | 3 | 6 | 31.5 | 36.2 | 3.8 | 6 | 34 | 34.2 | 9 | 9.1 | 9 | 13.2 |
| A2 | CORE 3 | 45 | 4 | 2 Bed Apartment (Block A2) | 73 | | 79.2 | | E | | 2 | 4 | 24.4 | 25.9 | 3.6 | 4 | 30 | 32.1 | 6 | 6 | 7 | 7.9 |
| A2 | CORE 3 | 46 | 4 | 1 Bed Apartment (Block A2) | 45 | 51.2 | 51.2 | | E | | 1 | 2 | 11.4 | 11.4 | 3.3 | 3.6 | 23 | 30 | 3 | 3 | 5 | 7.9 |
| A2 | CORE 3 | 47 | 4 | 2 Bed Apartment (Block A2) | 73 | | 75.2 | | E | | 2 | 4 | 24.4 | 25.6 | 3.6 | 3.6 | 30 | 30.1 | 6 | 6.6 | 7 | 8.5 |
| A2 | CORE 3 | 48 | 4 | 2 Bed Apartment (Block A2) | 73 | 81.9 | 81.9 | DUAL | W/E | | 2 | 4 | 24.4 | 24.8 | 3.6 | 3.6 | 30 | 32.2 | 6 | 6 | 7 | 7 |
| A2 | CORE 3 | 49 | 4 | 2 Bed Apartment (Block A2) | 73 | | 74.5 | | W | | 2 | 4 | 24.4 | 25.5 | 3.6 | 3.6 | 30 | 30.1 | 6 | 6.1 | 7 | 7.3 |

| | | | | | | | | | | | | | | | | | | | | | | |
|----|--------|----|---|----------------------------|----|-------|-------|------|-----|--|---|---|------|------|-----|------|----|------|---|------|---|--------|
| A2 | CORE 3 | 50 | 4 | 2 Bed Apartment (Block A2) | 73 | | 75.1 | | W | | 2 | 4 | 24.4 | 25.5 | 3.6 | 3.6 | 30 | 30.1 | 6 | 6.6 | 7 | 7.4 |
| A2 | CORE 3 | 51 | 4 | 2 Bed Apartment (Block A2) | 73 | | 73.9 | | W | | 2 | 4 | 24.4 | 25.5 | 3.6 | 3.6 | 30 | 30.1 | 6 | 6.6 | 7 | 7.4 |
| A2 | CORE 3 | 52 | 4 | 3 Bed Apartment (Block A2) | 90 | 108.7 | 108.7 | DUAL | W/S | | 3 | 6 | 31.5 | 38.1 | 3.8 | 4.9 | 34 | 36.7 | 9 | 10.2 | 9 | 9 |
| A2 | CORE 3 | 53 | 4 | 2 Bed Apartment (Block A2) | 73 | 80.3 | 80.3 | DUAL | S/E | | 2 | 4 | 24.4 | 25.5 | 3.6 | 3.6 | 30 | 35.6 | 6 | 6.9 | 7 | 13 |
| A2 | CORE 3 | 54 | 5 | 2 Bed Apartment (Block A2) | 73 | | 79.2 | | E | | 2 | 4 | 24.4 | 25.9 | 3.6 | 4 | 30 | 32.1 | 6 | 6 | 7 | 7.9 |
| A2 | CORE 3 | 55 | 5 | 1 Bed Apartment (Block A2) | 45 | 51.2 | 51.2 | | E | | 1 | 2 | 11.4 | 11.4 | 3.3 | 3.6 | 23 | 30 | 3 | 3 | 5 | 7.9 |
| A2 | CORE 3 | 56 | 5 | 2 Bed Apartment (Block A2) | 73 | | 75.2 | | E | | 2 | 4 | 24.4 | 25.6 | 3.6 | 3.6 | 30 | 30.1 | 6 | 6.6 | 7 | 8.5 |
| A2 | CORE 3 | 57 | 5 | 2 Bed Apartment (Block A2) | 73 | 81.9 | 81.9 | DUAL | W/E | | 2 | 4 | 24.4 | 24.8 | 3.6 | 3.6 | 30 | 32.2 | 6 | 6 | 7 | 7 |
| A2 | CORE 3 | 58 | 5 | 2 Bed Apartment (Block A2) | 73 | | 74.5 | | W | | 2 | 4 | 24.4 | 25.5 | 3.6 | 3.6 | 30 | 30.1 | 6 | 6.1 | 7 | 7.3 |
| A2 | CORE 3 | 59 | 5 | 2 Bed Apartment (Block A2) | 73 | | 75.1 | | W | | 2 | 4 | 24.4 | 25.5 | 3.6 | 3.6 | 30 | 30.1 | 6 | 6.6 | 7 | 7.4 |
| A2 | CORE 3 | 60 | 5 | 2 Bed Apartment (Block A2) | 73 | | 73.9 | | W | | 2 | 4 | 24.4 | 25.5 | 3.6 | 3.6 | 30 | 30.1 | 6 | 6.6 | 7 | 7.4 |
| A2 | CORE 3 | 61 | 5 | 3 Bed Apartment (Block A2) | 90 | 108.7 | 108.7 | DUAL | W/S | | 3 | 6 | 31.5 | 38.1 | 3.8 | 4.9 | 34 | 36.7 | 9 | 10.2 | 9 | 9 |
| A2 | CORE 3 | 62 | 5 | 2 Bed Apartment (Block A2) | 73 | 80.3 | 80.3 | DUAL | S/E | | 2 | 4 | 24.4 | 25.5 | 3.6 | 3.6 | 30 | 35.6 | 6 | 6.9 | 7 | 13 |
| A2 | CORE 3 | 63 | 6 | 2 Bed Apartment (Block A2) | 73 | | 79.2 | | E | | 2 | 4 | 24.4 | 25.9 | 3.6 | 4 | 30 | 32.1 | 6 | 6 | 7 | 7.9 |
| A2 | CORE 3 | 64 | 6 | 1 Bed Apartment (Block A2) | 45 | 51.2 | 51.2 | | E | | 1 | 2 | 11.4 | 11.4 | 3.3 | 3.6 | 23 | 30 | 3 | 3 | 5 | 7.9 |
| A2 | CORE 3 | 65 | 6 | 2 Bed Apartment (Block A2) | 73 | | 75.2 | | E | | 2 | 4 | 24.4 | 25.6 | 3.6 | 3.6 | 30 | 30.1 | 6 | 6.6 | 7 | 8.5 |
| A2 | CORE 3 | 66 | 6 | 2 Bed Apartment (Block A2) | 73 | 81.9 | 81.9 | DUAL | W/E | | 2 | 4 | 24.4 | 24.8 | 3.6 | 3.6 | 30 | 32.2 | 6 | 6 | 7 | 7 |
| A2 | CORE 3 | 67 | 6 | 2 Bed Apartment (Block A2) | 73 | | 74.5 | | W | | 2 | 4 | 24.4 | 25.5 | 3.6 | 3.6 | 30 | 30.1 | 6 | 6.1 | 7 | 7.3 |
| A2 | CORE 3 | 68 | 6 | 2 Bed Apartment (Block A2) | 73 | | 75.1 | | W | | 2 | 4 | 24.4 | 25.5 | 3.6 | 3.6 | 30 | 30.1 | 6 | 6.6 | 7 | 7.4 |
| A2 | CORE 3 | 69 | 6 | 2 Bed Apartment (Block A2) | 73 | | 73.9 | | W | | 2 | 4 | 24.4 | 25.5 | 3.6 | 3.6 | 30 | 30.1 | 6 | 6.6 | 7 | 7.4 |
| A2 | CORE 3 | 70 | 6 | 3 Bed Apartment (Block A2) | 90 | 108.7 | 108.7 | DUAL | W/S | | 3 | 6 | 31.5 | 38.1 | 3.8 | 4.9 | 34 | 36.7 | 9 | 10.2 | 9 | 9 |
| A2 | CORE 3 | 71 | 6 | 2 Bed Apartment (Block A2) | 73 | 80.3 | 80.3 | DUAL | S/E | | 2 | 4 | 24.4 | 25.5 | 3.6 | 3.6 | 30 | 35.6 | 6 | 6.9 | 7 | 13 |
| A2 | CORE 4 | 1 | 1 | 2 Bed Apartment (Block A2) | 73 | | 75.5 | | S/E | | 2 | 4 | 24.4 | 25.5 | 3.6 | 3.64 | 30 | 31 | 6 | 6.2 | 7 | 7.2 |
| A2 | CORE 4 | 2 | 1 | 2 Bed Apartment (Block A2) | 73 | 81.2 | 81.2 | DUAL | S/N | | 2 | 4 | 24.4 | 24.7 | 3.6 | 4.45 | 30 | 30 | 6 | 6 | 7 | 11 |
| A2 | CORE 4 | 3 | 1 | 2 Bed Apartment (Block A2) | 73 | | 74.9 | | N | | 2 | 4 | 24.4 | 25.5 | 3.6 | 3.65 | 30 | 30.1 | 6 | 6.6 | 7 | 26 |
| A2 | CORE 4 | 4 | 1 | 1 Bed Apartment (Block A2) | 45 | 52 | 52 | | N | | 1 | 2 | 11.4 | 11.4 | 3.3 | 3.6 | 23 | 28.8 | 3 | 3 | 5 | 18 |
| A2 | CORE 4 | 5 | 1 | 2 Bed Apartment (Block A2) | 73 | | 75.5 | | N | | 2 | 4 | 24.4 | 25.3 | 3.6 | 3.65 | 30 | 31.4 | 6 | 6 | 7 | 26 |
| A2 | CORE 4 | 6 | 1 | 3 Bed Apartment (Block A2) | 90 | | 98.6 | DUAL | N/E | | 3 | 6 | 31.5 | 36.6 | 3.8 | 5.5 | 34 | 34.4 | 9 | 9 | 9 | 9.7/23 |
| A2 | CORE 4 | 7 | 1 | 1 Bed Apartment (Block A2) | 45 | 49.7 | 49.3 | | E | | 1 | 2 | 11.4 | 11.5 | 3.3 | 3.39 | 23 | 26.4 | 3 | 3 | 5 | 7.9 |
| A2 | CORE 4 | 8 | 1 | 1 Bed Apartment (Block A2) | 45 | 50 | 50 | | E | | 1 | 2 | 11.4 | 11.5 | 3.3 | 3.35 | 23 | 28 | 3 | 3 | 5 | 7.9 |
| A2 | CORE 4 | 9 | 1 | 2 Bed Apartment (Block A2) | 73 | 81.9 | 81.9 | DUAL | W/E | | 2 | 4 | 24.4 | 24.8 | 3.6 | 3.6 | 30 | 32.2 | 6 | 6 | 7 | 7 |
| A2 | CORE 4 | 10 | 1 | 2 Bed Apartment (Block A2) | 73 | | 75.2 | | W | | 2 | 4 | 24.4 | 24.6 | 3.6 | 3.6 | 30 | 30 | 6 | 6.5 | 7 | 7.2 |
| A2 | CORE 4 | 11 | 2 | 2 Bed Apartment (Block A2) | 73 | | 75.5 | | S/E | | 2 | 4 | 24.4 | 25.5 | 3.6 | 3.64 | 30 | 31 | 6 | 6.2 | 7 | 7.2 |
| A2 | CORE 4 | 12 | 2 | 2 Bed Apartment (Block A2) | 73 | 81.2 | 81.2 | DUAL | S/N | | 2 | 4 | 24.4 | 24.7 | 3.6 | 4.45 | 30 | 30 | 6 | 6 | 7 | 7.2 |
| A2 | CORE 4 | 13 | 2 | 2 Bed Apartment (Block A2) | 73 | | 74.9 | | N | | 2 | 4 | 24.4 | 25.5 | 3.6 | 3.65 | 30 | 30.1 | 6 | 6.6 | 7 | 7.2 |
| A2 | CORE 4 | 14 | 2 | 1 Bed Apartment (Block A2) | 45 | 52 | 52 | | N | | 1 | 2 | 11.4 | 11.4 | 3.3 | 3.6 | 23 | 28.8 | 3 | 3 | 5 | 7.2 |
| A2 | CORE 4 | 15 | 2 | 2 Bed Apartment (Block A2) | 73 | | 75.5 | | N | | 2 | 4 | 24.4 | 25.3 | 3.6 | 3.65 | 30 | 31.4 | 6 | 6 | 7 | 7.2 |
| A2 | CORE 4 | 16 | 2 | 3 Bed Apartment (Block A2) | 90 | | 98.6 | DUAL | N/E | | 3 | 6 | 31.5 | 36.6 | 3.8 | 5.5 | 34 | 34.4 | 9 | 9 | 9 | 9.2 |
| A2 | CORE 4 | 17 | 2 | 1 Bed Apartment (Block A2) | 45 | 49.7 | 49.3 | | E | | 1 | 2 | 11.4 | 11.5 | 3.3 | 3.39 | 23 | 26.4 | 3 | 3 | 5 | 7.9 |
| A2 | CORE 4 | 18 | 2 | 1 Bed Apartment (Block A2) | 45 | 50 | 50 | | E | | 1 | 2 | 11.4 | 11.5 | 3.3 | 3.35 | 23 | 28 | 3 | 3 | 5 | 7.9 |
| A2 | CORE 4 | 19 | 2 | 2 Bed Apartment (Block A2) | 73 | 81.9 | 81.9 | DUAL | W/E | | 2 | 4 | 24.4 | 24.8 | 3.6 | 3.6 | 30 | 32.2 | 6 | 6 | 7 | 7 |
| A2 | CORE 4 | 20 | 2 | 2 Bed Apartment (Block A2) | 73 | | 75.2 | | W | | 2 | 4 | 24.4 | 24.6 | 3.6 | 3.6 | 30 | 30 | 6 | 6.5 | 7 | 7.2 |
| A2 | CORE 4 | 21 | 3 | 2 Bed Apartment (Block A2) | 73 | | 75.5 | | S/E | | 2 | 4 | 24.4 | 25.5 | 3.6 | 3.64 | 30 | 31 | 6 | 6.2 | 7 | 7.2 |
| A2 | CORE 4 | 22 | 3 | 2 Bed Apartment (Block A2) | 73 | 81.2 | 81.2 | DUAL | S/N | | 2 | 4 | 24.4 | 24.7 | 3.6 | 4.45 | 30 | 30 | 6 | 6 | 7 | 7.2 |
| A2 | CORE 4 | 23 | 3 | 2 Bed Apartment (Block A2) | 73 | | 74.9 | | N | | 2 | 4 | 24.4 | 25.5 | 3.6 | 3.65 | 30 | 30.1 | 6 | 6.6 | 7 | 7.2 |
| A2 | CORE 4 | 24 | 3 | 1 Bed Apartment (Block A2) | 45 | 52 | 52 | | N | | 1 | 2 | 11.4 | 11.4 | 3.3 | 3.6 | 23 | 28.8 | 3 | 3 | 5 | 7.2 |
| A2 | CORE 4 | 25 | 3 | 2 Bed Apartment (Block A2) | 73 | | 75.5 | | N | | 2 | 4 | 24.4 | 25.3 | 3.6 | 3.65 | 30 | 31.4 | 6 | 6 | 7 | 7.2 |
| A2 | CORE 4 | 26 | 3 | 3 Bed Apartment (Block A2) | 90 | | 98.6 | DUAL | N/E | | 3 | 6 | 31.5 | 36.6 | 3.8 | 5.5 | 34 | 34.4 | 9 | 9 | 9 | 9.2 |
| A2 | CORE 4 | 27 | 3 | 1 Bed Apartment (Block A2) | 45 | 49.7 | 49.3 | | E | | 1 | 2 | 11.4 | 11.5 | 3.3 | 3.39 | 23 | 26.4 | 3 | 3 | 5 | 7.9 |
| A2 | CORE 4 | 28 | 3 | 1 Bed Apartment (Block A2) | 45 | 50 | 50 | | E | | 1 | 2 | 11.4 | 11.5 | 3.3 | 3.35 | 23 | 28 | 3 | 3 | 5 | 7.9 |

| 1722-HOUSING QUALITY ASSESSMENT | | | | | | | | | | | | | | | | | | | | | | |
|---------------------------------|------------------|-------------|-------------|----------------------------|--|--|--------------------------------------|--------|-------------|--|-----------------|------------------|--|---|-------------------------------------|-------------------------------------|---|--|---|---|---|---|
| Apartment Areas - Block | | | | | | | | | | | | | | | | | | | | | | |
| Building | STAIRCORE NUMBER | UNIT NUMBER | FLOOR LEVEL | UNIT DESCRIPTION | MIN UNIT AREA REQUIRED (m ²) | UNITS AREAS > MIN AREA +10%(m ²) | UNIT AREA ACHIEVED (m ²) | ASPECT | ORIENTATION | CEILING HEIGHT (Kitchen/Living/Dining) | No. of Bedrooms | No. of Bedspaces | Aggregate Bedroom Areas Required (m ²) | Aggregate Bedroom Area Achieved (m ²) | Main Living Room Width Required (m) | Main Living Room Width Achieved (m) | Kitchen/Living / Dining Area Required (m ²) | Kitchen/Living /Dining Area Achieved (m ²) | Aggregate Storage Area Required (m ²) | Aggregate Storage Area Achieved (m ²) | Garden/ Terrace/Balcony Area Required (m ²) | Garden/ Terrace/Balcony Area Achieved (m ²) |
| A2 | CORE 4 | 29 | 3 | 2 Bed Apartment (Block A2) | 73 | 81.9 | 81.9 | DUAL | W/E | | 2 | 4 | 24.4 | 24.8 | 3.6 | 3.6 | 30 | 32.2 | 6 | 6 | 7 | 7 |
| A2 | CORE 4 | 30 | 3 | 2 Bed Apartment (Block A2) | 73 | | 75.2 | | W | | 2 | 4 | 24.4 | 24.6 | 3.6 | 3.6 | 30 | 30 | 6 | 6.5 | 7 | 7.2 |
| A2 | CORE 4 | 31 | 4 | 2 Bed Apartment (Block A2) | 73 | | 75.5 | | N | | 2 | 4 | 24.4 | 25.3 | 3.6 | 3.65 | 30 | 31.4 | 6 | 6 | 7 | 7.2 |
| A2 | CORE 4 | 32 | 4 | 3 Bed Apartment (Block A2) | 90 | | 98.6 | DUAL | N/E | | 3 | 6 | 31.5 | 36.6 | 3.8 | 5.5 | 34 | 34.4 | 9 | 9 | 9 | 9.2 |
| A2 | CORE 4 | 33 | 4 | 1 Bed Apartment (Block A2) | 45 | 49.7 | 49.3 | | E | | 1 | 2 | 11.4 | 11.5 | 3.3 | 3.39 | 23 | 26.4 | 3 | 3 | 5 | 7.9 |
| A2 | CORE 4 | 34 | 4 | 1 Bed Apartment (Block A2) | 45 | 50 | 50 | | E | | 1 | 2 | 11.4 | 11.5 | 3.3 | 3.35 | 23 | 28 | 3 | 3 | 5 | 7.9 |
| A2 | CORE 4 | 35 | 4 | 2 Bed Apartment (Block A2) | 73 | 81.9 | 81.9 | DUAL | W/E | | 2 | 4 | 24.4 | 24.8 | 3.6 | 3.6 | 30 | 32.2 | 6 | 6 | 7 | 7 |
| A2 | CORE 4 | 36 | 4 | 2 Bed Apartment (Block A2) | 73 | | 75.2 | | W | | 2 | 4 | 24.4 | 24.6 | 3.6 | 3.6 | 30 | 30 | 6 | 6.5 | 7 | 7.2 |
| A2 | CORE 4 | 37 | 5 | 2 Bed Apartment (Block A2) | 73 | | 75.5 | | N | | 2 | 4 | 24.4 | 25.3 | 3.6 | 3.65 | 30 | 31.4 | 6 | 6 | 7 | 7.2 |
| A2 | CORE 4 | 38 | 5 | 3 Bed Apartment (Block A2) | 90 | | 98.6 | DUAL | N/E | | 3 | 6 | 31.5 | 36.6 | 3.8 | 5.5 | 34 | 34.4 | 9 | 9 | 9 | 9.2 |
| A2 | CORE 4 | 39 | 5 | 1 Bed Apartment (Block A2) | 45 | 49.7 | 49.3 | | E | | 1 | 2 | 11.4 | 11.5 | 3.3 | 3.39 | 23 | 26.4 | 3 | 3 | 5 | 7.9 |
| A2 | CORE 4 | 40 | 5 | 1 Bed Apartment (Block A2) | 45 | 50 | 50 | | E | | 1 | 2 | 11.4 | 11.5 | 3.3 | 3.35 | 23 | 28 | 3 | 3 | 5 | 7.9 |
| A2 | CORE 4 | 41 | 5 | 2 Bed Apartment (Block A2) | 73 | 81.9 | 81.9 | DUAL | W/E | | 2 | 4 | 24.4 | 24.8 | 3.6 | 3.6 | 30 | 32.2 | 6 | 6 | 7 | 7 |
| A2 | CORE 4 | 42 | 5 | 2 Bed Apartment (Block A2) | 73 | | 75.2 | | W | | 2 | 4 | 24.4 | 24.6 | 3.6 | 3.6 | 30 | 30 | 6 | 6.5 | 7 | 7.2 |
| A2 | CORE 4 | 43 | 6 | 2 Bed Apartment (Block A2) | 73 | | 75.5 | | N | | 2 | 4 | 24.4 | 25.3 | 3.6 | 3.65 | 30 | 31.4 | 6 | 6 | 7 | 7.2 |
| A2 | CORE 4 | 44 | 6 | 3 Bed Apartment (Block A2) | 90 | | 98.6 | DUAL | N/E | | 3 | 6 | 31.5 | 36.6 | 3.8 | 5.5 | 34 | 34.4 | 9 | 9 | 9 | 9.2 |
| A2 | CORE 4 | 45 | 6 | 1 Bed Apartment (Block A2) | 45 | 49.7 | 49.3 | | E | | 1 | 2 | 11.4 | 11.5 | 3.3 | 3.39 | 23 | 26.4 | 3 | 3 | 5 | 7.9 |
| A2 | CORE 4 | 46 | 6 | 1 Bed Apartment (Block A2) | 45 | 50 | 50 | | E | | 1 | 2 | 11.4 | 11.5 | 3.3 | 3.35 | 23 | 28 | 3 | 3 | 5 | 7.9 |
| A2 | CORE 4 | 47 | 6 | 2 Bed Apartment (Block A2) | 73 | 81.9 | 81.9 | DUAL | W/E | | 2 | 4 | 24.4 | 24.8 | 3.6 | 3.6 | 30 | 32.2 | 6 | 6 | 7 | 7 |
| A2 | CORE 4 | 48 | 6 | 2 Bed Apartment (Block A2) | 73 | | 75.2 | | W | | 2 | 4 | 24.4 | 24.6 | 3.6 | 3.6 | 30 | 30 | 6 | 6.5 | 7 | 7.2 |
| A3 | CORE 5 | 1 | 0 | 1 Bed Apartment (Block A3) | 45 | | 47.5 | | E | | 1 | 2 | 11.4 | 11.4 | 3.3 | 3.6 | 23 | 24.7 | 3 | 3 | 5 | 10 |
| A3 | CORE 5 | 2 | 0 | 2 Bed Apartment (Block A3) | 73 | 80.8 | 80.8 | | E | | 2 | 4 | 24.4 | 25.8 | 3.6 | 4.22 | 30 | 37.4 | 6 | 6.5 | 7 | 7.2 |
| A3 | CORE 5 | 3 | 0 | 2 Bed Apartment (Block A3) | 73 | 81.9 | 81.9 | DUAL | W/E | | 2 | 4 | 24.4 | 24.8 | 3.6 | 3.6 | 30 | 32.5 | 6 | 6 | 7 | 7 |
| A3 | CORE 5 | 4 | 0 | 1 Bed Apartment (Block A3) | 45 | | 48.4 | | W | | 1 | 2 | 11.4 | 12.8 | 3.3 | 3.85 | 23 | 23.2 | 3 | 3.8 | 5 | 6.5 |
| A3 | CORE 5 | 5 | 0 | 1 Bed Apartment (Block A3) | 45 | | 49 | | W | | 1 | 2 | 11.4 | 12.8 | 3.3 | 3.85 | 23 | 24 | 3 | 3.8 | 5 | 6.5 |
| A3 | CORE 5 | 6 | 0 | 1 Bed Apartment (Block A3) | 45 | | 47.6 | | W | | 1 | 2 | 11.4 | 11.7 | 3.3 | 3.3. | 23 | 24 | 3 | 3.4 | 5 | 6.5 |
| A3 | CORE 5 | 7 | 0 | 1 Bed Apartment (Block A3) | 45 | | 48 | | E | | 1 | 2 | 11.4 | 11.4 | 3.3 | 3.6 | 23 | 25 | 3 | 3 | 5 | 9 |
| A3 | CORE 5 | 8 | 1 | 1 Bed Apartment (Block A3) | 45 | 50.1 | 50.1 | | E | | 1 | 2 | 11.4 | 11.4 | 3.3 | 3.45 | 23 | 28.1 | 3 | 3 | 5 | 7.2 |
| A3 | CORE 5 | 9 | 1 | 2 Bed Apartment (Block A3) | 73 | 80.8 | 80.8 | | E | | 2 | 4 | 24.4 | 25.8 | 3.6 | 4.22 | 30 | 37.4 | 6 | 6.5 | 7 | 7.2 |
| A3 | CORE 5 | 10 | 1 | 2 Bed Apartment (Block A3) | 73 | 81.9 | 81.9 | DUAL | W/E | | 2 | 4 | 24.4 | 24.8 | 3.6 | 3.6 | 30 | 32.5 | 6 | 6 | 7 | 7 |
| A3 | CORE 5 | 11 | 1 | 1 Bed Apartment (Block A3) | 45 | 56 | 56 | | W | | 1 | 2 | 11.4 | 12.8 | 3.3 | 3.85 | 23 | 31.7 | 3 | 3.8 | 5 | 7.2 |
| A3 | CORE 5 | 12 | 1 | 1 Bed Apartment (Block A3) | 45 | | 49.2 | | W | | 1 | 2 | 11.4 | 12.8 | 3.3 | 3.85 | 23 | 25 | 3 | 3.8 | 5 | 6.5 |
| A3 | CORE 5 | 13 | 1 | 1 Bed Apartment (Block A3) | 45 | | 47.6 | | W | | 1 | 2 | 11.4 | 11.7 | 3.3 | 3.3. | 23 | 24 | 3 | 3.4 | 5 | 6.5 |
| A3 | CORE 5 | 14 | 1 | 2 Bed Apartment (Block A3) | 73 | 89.1 | 89 | DUAL | S/E | | 2 | 4 | 24.4 | 24.4 | 3.6 | 3.62 | 30 | 36.5 | 6 | 7.6 | 7 | 8.4 |
| A3 | CORE 5 | 15 | 1 | 2 Bed Apartment (Block A3) | 73 | 83.6 | 83.6 | DUAL | S/E | | 2 | 4 | 24.4 | 25.4 | 3.6 | 4 | 30 | 35.3 | 6 | 6.3 | 7 | 7.2 |
| A3 | CORE 5 | 16 | 2 | 1 Bed Apartment (Block A3) | 45 | 50.1 | 50.1 | | E | | 1 | 2 | 11.4 | 11.4 | 3.3 | 3.45 | 23 | 28.1 | 3 | 3 | 5 | 7.2 |
| A3 | CORE 5 | 17 | 2 | 2 Bed Apartment (Block A3) | 73 | 80.8 | 80.8 | | E | | 2 | 4 | 24.4 | 25.8 | 3.6 | 4.22 | 30 | 37.4 | 6 | 6.5 | 7 | 7.2 |
| A3 | CORE 5 | 18 | 2 | 2 Bed Apartment (Block A3) | 73 | 81.9 | 81.9 | DUAL | W/E | | 2 | 4 | 24.4 | 24.8 | 3.6 | 3.6 | 30 | 32.5 | 6 | 6 | 7 | 7 |
| A3 | CORE 5 | 19 | 2 | 1 Bed Apartment (Block A3) | 45 | 56 | 56 | | W | | 1 | 2 | 11.4 | 12.8 | 3.3 | 3.85 | 23 | 31.7 | 3 | 3.8 | 5 | 7.2 |
| A3 | CORE 5 | 20 | 2 | 1 Bed Apartment (Block A3) | 45 | | 49.2 | | W | | 1 | 2 | 11.4 | 12.8 | 3.3 | 3.85 | 23 | 25 | 3 | 3.8 | 5 | 6.5 |
| A3 | CORE 5 | 21 | 2 | 1 Bed Apartment (Block A3) | 45 | | 47.6 | | W | | 1 | 2 | 11.4 | 11.7 | 3.3 | 3.3. | 23 | 24 | 3 | 3.4 | 5 | 6.5 |
| A3 | CORE 5 | 22 | 2 | 2 Bed Apartment (Block A3) | 73 | 89.1 | 89 | DUAL | S/E | | 2 | 4 | 24.4 | 24.4 | 3.6 | 3.62 | 30 | 36.5 | 6 | 7.6 | 7 | 8.4 |

| | | | | | | | | | | | | | | | | | | | | | | |
|----|--------|----|---|----------------------------|----|------|------|------|-----|--|---|---|------|------|-----|------|----|------|---|-----|---|------|
| A3 | CORE 5 | 23 | 2 | 2 Bed Apartment (Block A3) | 73 | 83.6 | 83.6 | DUAL | S/E | | 2 | 4 | 24.4 | 25.4 | 3.6 | 4 | 30 | 35.3 | 6 | 6.3 | 7 | 7.2 |
| A3 | CORE 5 | 24 | 3 | 1 Bed Apartment (Block A3) | 45 | 50.1 | 50.1 | | E | | 1 | 2 | 11.4 | 11.4 | 3.3 | 3.45 | 23 | 28.1 | 3 | 3 | 5 | 7.2 |
| A3 | CORE 5 | 25 | 3 | 2 Bed Apartment (Block A3) | 73 | 80.8 | 80.8 | | E | | 2 | 4 | 24.4 | 25.8 | 3.6 | 4.22 | 30 | 37.4 | 6 | 6.5 | 7 | 7.2 |
| A3 | CORE 5 | 26 | 3 | 2 Bed Apartment (Block A3) | 73 | 81.9 | 81.9 | DUAL | W/E | | 2 | 4 | 24.4 | 24.8 | 3.6 | 3.6 | 30 | 32.5 | 6 | 6 | 7 | 7 |
| A3 | CORE 5 | 27 | 3 | 1 Bed Apartment (Block A3) | 45 | 56 | 56 | | W | | 1 | 2 | 11.4 | 12.8 | 3.3 | 3.85 | 23 | 31.7 | 3 | 3.8 | 5 | 7.2 |
| A3 | CORE 5 | 28 | 3 | 1 Bed Apartment (Block A3) | 45 | | 49.2 | | W | | 1 | 2 | 11.4 | 12.8 | 3.3 | 3.85 | 23 | 25 | 3 | 3.8 | 5 | 6.5 |
| A3 | CORE 5 | 29 | 3 | 1 Bed Apartment (Block A3) | 45 | | 47.6 | | W | | 1 | 2 | 11.4 | 11.7 | 3.3 | 3.3 | 23 | 24 | 3 | 3.4 | 5 | 6.5 |
| A3 | CORE 5 | 30 | 3 | 2 Bed Apartment (Block A3) | 73 | 89.1 | 89 | DUAL | S/E | | 2 | 4 | 24.4 | 24.4 | 3.6 | 3.62 | 30 | 36.5 | 6 | 7.6 | 7 | 8.4 |
| A3 | CORE 5 | 31 | 3 | 2 Bed Apartment (Block A3) | 73 | 83.6 | 83.6 | DUAL | S/E | | 2 | 4 | 24.4 | 25.4 | 3.6 | 4 | 30 | 35.3 | 6 | 6.3 | 7 | 7.2 |
| A3 | CORE 5 | 32 | 4 | 1 Bed Apartment (Block A3) | 45 | 50.1 | 50.1 | | E | | 1 | 2 | 11.4 | 11.4 | 3.3 | 3.45 | 23 | 28.1 | 3 | 3 | 5 | 7.2 |
| A3 | CORE 5 | 33 | 4 | 2 Bed Apartment (Block A3) | 73 | 80.8 | 80.8 | | E | | 2 | 4 | 24.4 | 25.8 | 3.6 | 4.22 | 30 | 37.4 | 6 | 6.5 | 7 | 7.2 |
| A3 | CORE 5 | 34 | 4 | 2 Bed Apartment (Block A3) | 73 | 81.9 | 81.9 | DUAL | W/E | | 2 | 4 | 24.4 | 24.8 | 3.6 | 3.6 | 30 | 32.5 | 6 | 6 | 7 | 7 |
| A3 | CORE 5 | 35 | 4 | 1 Bed Apartment (Block A3) | 45 | 56 | 56 | | W | | 1 | 2 | 11.4 | 12.8 | 3.3 | 3.85 | 23 | 31.7 | 3 | 3.8 | 5 | 7.2 |
| A3 | CORE 5 | 36 | 4 | 1 Bed Apartment (Block A3) | 45 | | 49.2 | | W | | 1 | 2 | 11.4 | 12.8 | 3.3 | 3.85 | 23 | 25 | 3 | 3.8 | 5 | 6.5 |
| A3 | CORE 5 | 37 | 4 | 1 Bed Apartment (Block A3) | 45 | | 47.6 | | W | | 1 | 2 | 11.4 | 11.7 | 3.3 | 3.3 | 23 | 24 | 3 | 3.4 | 5 | 6.5 |
| A3 | CORE 5 | 38 | 4 | 2 Bed Apartment (Block A3) | 73 | 89.1 | 89 | DUAL | S/E | | 2 | 4 | 24.4 | 24.4 | 3.6 | 3.62 | 30 | 36.5 | 6 | 7.6 | 7 | 8.4 |
| A3 | CORE 5 | 39 | 4 | 2 Bed Apartment (Block A3) | 73 | 75.5 | 75.5 | DUAL | S/E | | 2 | 4 | 24.4 | 25.4 | 3.6 | 4 | 30 | 30 | 6 | 6 | 7 | 11.2 |
| A3 | CORE 5 | 40 | 5 | 1 Bed Apartment (Block A3) | 45 | 50.1 | 50.1 | | E | | 1 | 2 | 11.4 | 11.4 | 3.3 | 3.45 | 23 | 28.1 | 3 | 3 | 5 | 7.2 |
| A3 | CORE 5 | 41 | 5 | 2 Bed Apartment (Block A3) | 73 | 80.8 | 80.8 | | E | | 2 | 4 | 24.4 | 25.8 | 3.6 | 4.22 | 30 | 37.4 | 6 | 6.5 | 7 | 7.2 |
| A3 | CORE 5 | 42 | 5 | 2 Bed Apartment (Block A3) | 73 | 81.9 | 81.9 | DUAL | W/E | | 2 | 4 | 24.4 | 24.8 | 3.6 | 3.6 | 30 | 32.5 | 6 | 6 | 7 | 7 |
| A3 | CORE 5 | 43 | 5 | 1 Bed Apartment (Block A3) | 45 | 56 | 56 | | W | | 1 | 2 | 11.4 | 12.8 | 3.3 | 3.85 | 23 | 31.7 | 3 | 3.8 | 5 | 7.2 |
| A3 | CORE 5 | 44 | 5 | 1 Bed Apartment (Block A3) | 45 | | 49.2 | | W | | 1 | 2 | 11.4 | 12.8 | 3.3 | 3.85 | 23 | 25 | 3 | 3.8 | 5 | 6.5 |
| A3 | CORE 5 | 45 | 5 | 1 Bed Apartment (Block A3) | 45 | | 47.6 | | W | | 1 | 2 | 11.4 | 11.7 | 3.3 | 3.3 | 23 | 24 | 3 | 3.4 | 5 | 6.5 |
| A3 | CORE 5 | 46 | 5 | 2 Bed Apartment (Block A3) | 73 | 89.1 | 89 | DUAL | S/E | | 2 | 4 | 24.4 | 24.4 | 3.6 | 3.62 | 30 | 36.5 | 6 | 7.6 | 7 | 8.4 |
| A3 | CORE 5 | 47 | 5 | 2 Bed Apartment (Block A3) | 73 | 75.5 | 75.5 | DUAL | S/E | | 2 | 4 | 24.4 | 25.4 | 3.6 | 4 | 30 | 30 | 6 | 6 | 7 | 7.2 |
| A3 | CORE 5 | 48 | 6 | 1 Bed Apartment (Block A3) | 45 | 50.1 | 50.1 | | E | | 1 | 2 | 11.4 | 11.4 | 3.3 | 3.45 | 23 | 28.1 | 3 | 3 | 5 | 7.2 |
| A3 | CORE 5 | 49 | 6 | 2 Bed Apartment (Block A3) | 73 | 80.8 | 80.8 | | E | | 2 | 4 | 24.4 | 25.8 | 3.6 | 4.22 | 30 | 37.4 | 6 | 6.5 | 7 | 7.2 |
| A3 | CORE 5 | 50 | 6 | 2 Bed Apartment (Block A3) | 73 | 81.9 | 81.9 | DUAL | W/E | | 2 | 4 | 24.4 | 24.8 | 3.6 | 3.6 | 30 | 32.5 | 6 | 6 | 7 | 7 |
| A3 | CORE 5 | 51 | 6 | 1 Bed Apartment (Block A3) | 45 | 56 | 56 | | W | | 1 | 2 | 11.4 | 12.8 | 3.3 | 3.85 | 23 | 31.7 | 3 | 3.8 | 5 | 7.2 |
| A3 | CORE 5 | 52 | 6 | 1 Bed Apartment (Block A3) | 45 | | 49.2 | | W | | 1 | 2 | 11.4 | 12.8 | 3.3 | 3.85 | 23 | 25 | 3 | 3.8 | 5 | 6.5 |
| A3 | CORE 5 | 53 | 6 | 1 Bed Apartment (Block A3) | 45 | | 47.6 | | W | | 1 | 2 | 11.4 | 11.7 | 3.3 | 3.3 | 23 | 24 | 3 | 3.4 | 5 | 6.5 |
| A3 | CORE 5 | 54 | 6 | 2 Bed Apartment (Block A3) | 73 | 89.1 | 89 | DUAL | S/E | | 2 | 4 | 24.4 | 24.4 | 3.6 | 3.62 | 30 | 36.5 | 6 | 7.6 | 7 | 8.4 |
| A3 | CORE 5 | 55 | 6 | 2 Bed Apartment (Block A3) | 73 | 75.5 | 75.5 | DUAL | S/E | | 2 | 4 | 24.4 | 25.4 | 3.6 | 4 | 30 | 30 | 6 | 6 | 7 | 7.2 |
| A3 | CORE 5 | 56 | 7 | 1 Bed Apartment (Block A3) | 45 | | 46.5 | DUAL | E/N | | 1 | 2 | 11.4 | 11.7 | 3.3 | 3.5 | 23 | 24 | 3 | 3.1 | 5 | 6 |
| A3 | CORE 5 | 57 | 7 | 1 Bed Apartment (Block A3) | 73 | 57.2 | 57.2 | DUAL | W/N | | 1 | 2 | 11.4 | 11.8 | 3.3 | 3.8 | 23 | 26 | 3 | 3 | 5 | 33.6 |
| A3 | CORE 5 | 58 | 7 | 2 Bed Apartment (Block A3) | 73 | 80 | 80 | DUAL | W/S | | 2 | 4 | 24.4 | 24.4 | 3.6 | 3.9 | 30 | 33.6 | 6 | 6 | 7 | 7.2 |
| A3 | CORE 5 | 59 | 8 | 1 Bed Apartment (Block A3) | 45 | | 46.5 | DUAL | E/N | | 1 | 2 | 11.4 | 11.7 | 3.3 | 3.5 | 23 | 24 | 3 | 3.1 | 5 | 6 |
| A3 | CORE 5 | 60 | 8 | 1 Bed Apartment (Block A3) | 73 | 57.2 | 57.2 | DUAL | W/N | | 1 | 2 | 11.4 | 11.8 | 3.3 | 3.8 | 23 | 26 | 3 | 3 | 5 | 6 |
| A3 | CORE 5 | 61 | 8 | 2 Bed Apartment (Block A3) | 73 | 80 | 80 | DUAL | W/S | | 2 | 4 | 24.4 | 24.4 | 3.6 | 3.9 | 30 | 33.6 | 6 | 6 | 7 | 7.2 |
| A3 | CORE 5 | 62 | 9 | 1 Bed Apartment (Block A3) | 45 | | 48.9 | DUAL | W/S | | 1 | 2 | 11.4 | 11.5 | 3.3 | 3.63 | 23 | 25.3 | 3 | 3 | 5 | 27.6 |
| A3 | CORE 5 | 63 | 9 | 2 Bed Apartment (Block A3) | 73 | | 78.6 | DUAL | S/E | | 2 | 4 | 24.4 | 24.7 | 3.6 | 3.67 | 30 | 30 | 6 | 6 | 7 | 12.6 |
| A3 | CORE 6 | 1 | 0 | 3 Bed Apartment (Block A3) | 90 | | 98.6 | DUAL | N/E | | 3 | 6 | 31.5 | 35.8 | 3.8 | 5.5 | 34 | 34.4 | 9 | 9 | 9 | 9.2 |
| A3 | CORE 6 | 2 | 0 | 1 Bed Apartment (Block A3) | 45 | | 46.4 | | E | | 1 | 2 | 11.4 | 11.5 | 3.3 | 3.39 | 23 | 23 | 3 | 3 | 5 | 9.9 |
| A3 | CORE 6 | 3 | 0 | 1 Bed Apartment (Block A3) | 45 | | 46.7 | | E | | 1 | 2 | 11.4 | 11.5 | 3.3 | 3.35 | 23 | 23.6 | 3 | 3 | 5 | 9.8 |
| A3 | CORE 6 | 4 | 0 | 2 Bed Apartment (Block A3) | 73 | 81.9 | 81.9 | DUAL | W/E | | 2 | 4 | 24.4 | 24.8 | 3.6 | 3.6 | 30 | 32.2 | 6 | 6 | 7 | 7 |
| A3 | CORE 6 | 5 | 0 | 2 Bed Apartment (Block A3) | 73 | | 75.2 | | W | | 2 | 4 | 24.4 | 24.6 | 3.6 | 3.6 | 30 | 30 | 6 | 6.5 | 7 | 7.2 |
| A3 | CORE 6 | 6 | 1 | 2 Bed Apartment (Block A2) | 73 | | 75.5 | | S/E | | 2 | 4 | 24.4 | 25.5 | 3.6 | 3.64 | 30 | 31 | 6 | 6.2 | 7 | 7.2 |
| A3 | CORE 6 | 7 | 1 | 2 Bed Apartment (Block A2) | 73 | 81.2 | 81.2 | DUAL | S/N | | 2 | 4 | 24.4 | 24.7 | 3.6 | 4.45 | 30 | 30 | 6 | 6 | 7 | 7.2 |
| A3 | CORE 6 | 8 | 1 | 2 Bed Apartment (Block A2) | 73 | | 74.9 | | N | | 2 | 4 | 24.4 | 25.5 | 3.6 | 3.65 | 30 | 30.1 | 6 | 6.6 | 7 | 7.2 |
| A3 | CORE 6 | 9 | 1 | 1 Bed Apartment (Block A2) | 45 | 52 | 52 | | N | | 1 | 2 | 11.4 | 11.4 | 3.3 | 3.6 | 23 | 28.8 | 3 | 3 | 5 | 7.2 |
| A3 | CORE 6 | 10 | 1 | 2 Bed Apartment (Block A2) | 73 | | 75.5 | | N | | 2 | 4 | 24.4 | 25.3 | 3.6 | 3.65 | 30 | 31.4 | 6 | 6 | 7 | 7.2 |
| A3 | CORE 6 | 11 | 1 | 3 Bed Apartment (Block A2) | 90 | | 98.6 | DUAL | N/E | | 3 | 6 | 31.5 | 36.6 | 3.8 | 5.5 | 34 | 34.4 | 9 | 9 | 9 | 9.2 |

| 1722-HOUSING QUALITY ASSESSMENT | | | | | | | | | | | | | | | | | | | | | | |
|---------------------------------|------------------|-------------|-------------|----------------------------|--|--|--------------------------------------|--------|-------------|--|-----------------|------------------|--|---|-------------------------------------|-------------------------------------|---|--|---|---|---|---|
| Apartment Areas - Block | | | | | | | | | | | | | | | | | | | | | | |
| Building | STAIRCORE NUMBER | UNIT NUMBER | FLOOR LEVEL | UNIT DESCRIPTION | MIN UNIT AREA REQUIRED (m ²) | UNITS AREAS > MIN AREA +10%(m ²) | UNIT AREA ACHIEVED (m ²) | ASPECT | ORIENTATION | CEILING HEIGHT (Kitchen/Living/Dining) | No. of Bedrooms | No. of Bedspaces | Aggregate Bedroom Areas Required (m ²) | Aggregate Bedroom Area Achieved (m ²) | Main Living Room Width Required (m) | Main Living Room Width Achieved (m) | Kitchen/Living / Dining Area Required (m ²) | Kitchen/Living /Dining Area Achieved (m ²) | Aggregate Storage Area Required (m ²) | Aggregate Storage Area Achieved (m ²) | Garden/ Terrace/Balcony Area Required (m ²) | Garden/ Terrace/Balcony Area Achieved (m ²) |
| A3 | CORE 6 | 12 | 1 | 1 Bed Apartment (Block A2) | 45 | 49.7 | 49.3 | | E | | 1 | 2 | 11.4 | 11.5 | 3.3 | 3.39 | 23 | 26.4 | 3 | 3 | 5 | 7.9 |
| A3 | CORE 6 | 13 | 1 | 1 Bed Apartment (Block A2) | 45 | 50 | 50 | | E | | 1 | 2 | 11.4 | 11.5 | 3.3 | 3.35 | 23 | 28 | 3 | 3 | 5 | 7.9 |
| A3 | CORE 6 | 14 | 1 | 2 Bed Apartment (Block A2) | 73 | 81.9 | 81.9 | DUAL | W/E | | 2 | 4 | 24.4 | 24.8 | 3.6 | 3.6 | 30 | 32.2 | 6 | 6 | 7 | 7 |
| A3 | CORE 6 | 15 | 1 | 2 Bed Apartment (Block A2) | 73 | | 75.2 | | W | | 2 | 4 | 24.4 | 24.6 | 3.6 | 3.6 | 30 | 30 | 6 | 6.5 | 7 | 7.2 |
| A3 | CORE 6 | 16 | 2 | 2 Bed Apartment (Block A2) | 73 | | 75.5 | | S/E | | 2 | 4 | 24.4 | 25.5 | 3.6 | 3.64 | 30 | 31 | 6 | 6.2 | 7 | 7.2 |
| A3 | CORE 6 | 17 | 2 | 2 Bed Apartment (Block A2) | 73 | 81.2 | 81.2 | DUAL | S/N | | 2 | 4 | 24.4 | 24.7 | 3.6 | 4.45 | 30 | 30 | 6 | 6 | 7 | 7.2 |
| A3 | CORE 6 | 18 | 2 | 2 Bed Apartment (Block A2) | 73 | | 74.9 | | N | | 2 | 4 | 24.4 | 25.5 | 3.6 | 3.65 | 30 | 30.1 | 6 | 6.6 | 7 | 7.2 |
| A3 | CORE 6 | 19 | 2 | 1 Bed Apartment (Block A2) | 45 | 52 | 52 | | N | | 1 | 2 | 11.4 | 11.4 | 3.3 | 3.6 | 23 | 28.8 | 3 | 3 | 5 | 7.2 |
| A3 | CORE 6 | 20 | 2 | 2 Bed Apartment (Block A2) | 73 | | 75.5 | | N | | 2 | 4 | 24.4 | 25.3 | 3.6 | 3.65 | 30 | 31.4 | 6 | 6 | 7 | 7.2 |
| A3 | CORE 6 | 21 | 2 | 3 Bed Apartment (Block A2) | 90 | | 98.6 | DUAL | N/E | | 3 | 6 | 31.5 | 36.6 | 3.8 | 5.5 | 34 | 34.4 | 9 | 9 | 9 | 9.2 |
| A3 | CORE 6 | 22 | 2 | 1 Bed Apartment (Block A2) | 45 | 49.7 | 49.3 | | E | | 1 | 2 | 11.4 | 11.5 | 3.3 | 3.39 | 23 | 26.4 | 3 | 3 | 5 | 7.9 |
| A3 | CORE 6 | 23 | 2 | 1 Bed Apartment (Block A2) | 45 | 50 | 50 | | E | | 1 | 2 | 11.4 | 11.5 | 3.3 | 3.35 | 23 | 28 | 3 | 3 | 5 | 7.9 |
| A3 | CORE 6 | 24 | 2 | 2 Bed Apartment (Block A2) | 73 | 81.9 | 81.9 | DUAL | W/E | | 2 | 4 | 24.4 | 24.8 | 3.6 | 3.6 | 30 | 32.2 | 6 | 6 | 7 | 7 |
| A3 | CORE 6 | 25 | 2 | 2 Bed Apartment (Block A2) | 73 | | 75.2 | | W | | 2 | 4 | 24.4 | 24.6 | 3.6 | 3.6 | 30 | 30 | 6 | 6.5 | 7 | 7.2 |
| A3 | CORE 6 | 26 | 3 | 2 Bed Apartment (Block A2) | 73 | | 75.5 | | S/E | | 2 | 4 | 24.4 | 25.5 | 3.6 | 3.64 | 30 | 31 | 6 | 6.2 | 7 | 7.2 |
| A3 | CORE 6 | 27 | 3 | 2 Bed Apartment (Block A2) | 73 | 81.2 | 81.2 | DUAL | S/N | | 2 | 4 | 24.4 | 24.7 | 3.6 | 4.45 | 30 | 30 | 6 | 6 | 7 | 7.2 |
| A3 | CORE 6 | 28 | 3 | 2 Bed Apartment (Block A2) | 73 | | 74.9 | | N | | 2 | 4 | 24.4 | 25.5 | 3.6 | 3.65 | 30 | 30.1 | 6 | 6.6 | 7 | 7.2 |
| A3 | CORE 6 | 29 | 3 | 1 Bed Apartment (Block A2) | 45 | 52 | 52 | | N | | 1 | 2 | 11.4 | 11.4 | 3.3 | 3.6 | 23 | 28.8 | 3 | 3 | 5 | 7.2 |
| A3 | CORE 6 | 30 | 3 | 2 Bed Apartment (Block A2) | 73 | | 75.5 | | N | | 2 | 4 | 24.4 | 25.3 | 3.6 | 3.65 | 30 | 31.4 | 6 | 6 | 7 | 7.2 |
| A3 | CORE 6 | 31 | 3 | 3 Bed Apartment (Block A2) | 90 | | 98.6 | DUAL | N/E | | 3 | 6 | 31.5 | 36.6 | 3.8 | 5.5 | 34 | 34.4 | 9 | 9 | 9 | 9.2 |
| A3 | CORE 6 | 32 | 3 | 1 Bed Apartment (Block A2) | 45 | 49.7 | 49.3 | | E | | 1 | 2 | 11.4 | 11.5 | 3.3 | 3.39 | 23 | 26.4 | 3 | 3 | 5 | 7.9 |
| A3 | CORE 6 | 33 | 3 | 1 Bed Apartment (Block A2) | 45 | 50 | 50 | | E | | 1 | 2 | 11.4 | 11.5 | 3.3 | 3.35 | 23 | 28 | 3 | 3 | 5 | 7.9 |
| A3 | CORE 6 | 34 | 3 | 2 Bed Apartment (Block A2) | 73 | 81.9 | 81.9 | DUAL | W/E | | 2 | 4 | 24.4 | 24.8 | 3.6 | 3.6 | 30 | 32.2 | 6 | 6 | 7 | 7 |
| A3 | CORE 6 | 35 | 3 | 2 Bed Apartment (Block A2) | 73 | | 75.2 | | W | | 2 | 4 | 24.4 | 24.6 | 3.6 | 3.6 | 30 | 30 | 6 | 6.5 | 7 | 7.2 |
| A3 | CORE 6 | 36 | 4 | 2 Bed Apartment (Block A3) | 73 | | 75.1 | DUAL | N | | 2 | 4 | 24.4 | 25.3 | 3.6 | 3.65 | 30 | 30.9 | 6 | 6 | 7 | 7.2 |
| A3 | CORE 6 | 37 | 4 | 3 Bed Apartment (Block A3) | 90 | | 97.9 | DUAL | N/E | | 3 | 6 | 31.5 | 36 | 3.8 | 5.5 | 34 | 34.4 | 9 | 9.2 | 9 | 9.2 |
| A3 | CORE 6 | 38 | 4 | 1 Bed Apartment (Block A3) | 45 | 49.7 | 49.3 | | E | | 1 | 2 | 11.4 | 11.5 | 3.3 | 3.39 | 23 | 26.4 | 3 | 3 | 5 | 7.9 |
| A3 | CORE 6 | 39 | 4 | 1 Bed Apartment (Block A3) | 45 | 50 | 50 | | E | | 1 | 2 | 11.4 | 11.5 | 3.3 | 3.35 | 23 | 28 | 3 | 3 | 5 | 7.9 |
| A3 | CORE 6 | 40 | 4 | 2 Bed Apartment (Block A3) | 73 | 81.9 | 81.9 | DUAL | W/E | | 2 | 4 | 24.4 | 24.8 | 3.6 | 3.6 | 30 | 32.2 | 6 | 6 | 7 | 7 |
| A3 | CORE 6 | 41 | 4 | 2 Bed Apartment (Block A3) | 73 | | 75.2 | | W | | 2 | 4 | 24.4 | 24.6 | 3.6 | 3.6 | 30 | 30 | 6 | 6.5 | 7 | 7.2 |
| A3 | CORE 6 | 42 | 5 | 2 Bed Apartment (Block A3) | 73 | | 75.1 | DUAL | N | | 2 | 4 | 24.4 | 25.3 | 3.6 | 3.65 | 30 | 30.9 | 6 | 6 | 7 | 7.2 |
| A3 | CORE 6 | 43 | 5 | 3 Bed Apartment (Block A3) | 90 | | 97.9 | DUAL | N/E | | 3 | 6 | 31.5 | 36 | 3.8 | 5.5 | 34 | 34.4 | 9 | 9.2 | 9 | 9.2 |
| A3 | CORE 6 | 44 | 5 | 1 Bed Apartment (Block A3) | 45 | 49.7 | 49.3 | | E | | 1 | 2 | 11.4 | 11.5 | 3.3 | 3.39 | 23 | 26.4 | 3 | 3 | 5 | 7.9 |
| A3 | CORE 6 | 45 | 5 | 1 Bed Apartment (Block A3) | 45 | 50 | 50 | | E | | 1 | 2 | 11.4 | 11.5 | 3.3 | 3.35 | 23 | 28 | 3 | 3 | 5 | 7.9 |
| A3 | CORE 6 | 46 | 5 | 2 Bed Apartment (Block A3) | 73 | 81.9 | 81.9 | DUAL | W/E | | 2 | 4 | 24.4 | 24.8 | 3.6 | 3.6 | 30 | 32.2 | 6 | 6 | 7 | 7 |
| A3 | CORE 6 | 47 | 5 | 2 Bed Apartment (Block A3) | 73 | | 75.2 | | W | | 2 | 4 | 24.4 | 24.6 | 3.6 | 3.6 | 30 | 30 | 6 | 6.5 | 7 | 7.2 |
| A3 | CORE 6 | 48 | 6 | 2 Bed Apartment (Block A3) | 73 | | 75.1 | DUAL | N | | 2 | 4 | 24.4 | 25.3 | 3.6 | 3.65 | 30 | 30.9 | 6 | 6 | 7 | 7.2 |
| A3 | CORE 6 | 49 | 6 | 3 Bed Apartment (Block A3) | 90 | | 97.9 | DUAL | N/E | | 3 | 6 | 31.5 | 36 | 3.8 | 5.5 | 34 | 34.4 | 9 | 9.2 | 9 | 9.2 |
| A3 | CORE 6 | 50 | 6 | 1 Bed Apartment (Block A3) | 45 | 49.7 | 49.3 | | E | | 1 | 2 | 11.4 | 11.5 | 3.3 | 3.39 | 23 | 26.4 | 3 | 3 | 5 | 7.9 |
| A3 | CORE 6 | 51 | 6 | 1 Bed Apartment (Block A3) | 45 | 50 | 50 | | E | | 1 | 2 | 11.4 | 11.5 | 3.3 | 3.35 | 23 | 28 | 3 | 3 | 5 | 7.9 |
| A3 | CORE 6 | 52 | 6 | 2 Bed Apartment (Block A3) | 73 | 81.9 | 81.9 | DUAL | W/E | | 2 | 4 | 24.4 | 24.8 | 3.6 | 3.6 | 30 | 32.2 | 6 | 6 | 7 | 7 |
| A3 | CORE 6 | 53 | 6 | 2 Bed Apartment (Block A3) | 73 | | 75.2 | | W | | 2 | 4 | 24.4 | 24.6 | 3.6 | 3.6 | 30 | 30 | 6 | 6.5 | 7 | 7.2 |
| B1 | CORE 7 | 1 | 1 | 1 Bed Apartment (Block B1) | 45 | 52 | 52 | | S | | 1 | 2 | 11.4 | 11.4 | 3.3 | 3.6 | 23 | 28.8 | 3 | 3 | 5 | 11 |

| | | | | | | | | | | | | | | | | | | | | | | |
|----|--------|----|---|----------------------------|----|-------|-------|------|-------|--|---|---|------|------|-----|------|----|------|---|-----|---|------|
| B1 | CORE 7 | 2 | 1 | 2 Bed Apartment (Block B1) | 73 | | 75.6 | | S | | 2 | 4 | 24.4 | 25.5 | 3.6 | 3.65 | 30 | 30.6 | 6 | 6.7 | 7 | 16.6 |
| B1 | CORE 7 | 3 | 1 | 3 Bed Apartment (Block B1) | 90 | 113.4 | 113.4 | DUAL | S/N/E | | 3 | 5 | 31.5 | 37.9 | 3.8 | 4.45 | 34 | 34.6 | 9 | 9.2 | 9 | 10.5 |
| B1 | CORE 7 | 4 | 1 | 1 Bed Apartment (Block B1) | 45 | 52 | 52 | | N/W | | 1 | 5 | 11.4 | 13.3 | 3.3 | 4 | 23 | 26 | 3 | 3.9 | 5 | 7.2 |
| 11 | CORE 7 | 5 | 2 | 1 Bed Apartment (Block B1) | 45 | 52 | 52 | | S | | 1 | 2 | 11.4 | 11.4 | 3.3 | 3.6 | 23 | 28.8 | 3 | 3 | 5 | 6.1 |
| B1 | CORE 7 | 6 | 2 | 2 Bed Apartment (Block B1) | 73 | | 75.6 | | S | | 2 | 4 | 24.4 | 25.5 | 3.6 | 3.65 | 30 | 30.6 | 6 | 6.7 | 7 | 7 |
| B1 | CORE 7 | 7 | 2 | 3 Bed Apartment (Block B1) | 90 | 110.8 | 110.8 | DUAL | S/N | | 3 | 5 | 31.5 | 37.3 | 3.8 | 4.45 | 34 | 39.1 | 9 | 9 | 9 | 14.2 |
| B1 | CORE 7 | 8 | 2 | 1 Bed Apartment (Block B1) | 45 | 50.7 | 50.7 | | N/W | | 1 | 2 | 11.4 | 13.3 | 3.3 | 4 | 23 | 26 | 3 | 3.9 | 5 | 7.2 |
| B1 | CORE 7 | 9 | 3 | 1 Bed Apartment (Block B1) | 45 | 52 | 52 | | S | | 1 | 2 | 11.4 | 11.4 | 3.3 | 3.6 | 23 | 28.8 | 3 | 3 | 5 | 6.1 |
| B1 | CORE 7 | 10 | 3 | 2 Bed Apartment (Block B1) | 73 | | 75.6 | | S | | 2 | 4 | 24.4 | 25.5 | 3.6 | 3.65 | 30 | 30.6 | 6 | 6.7 | 7 | 7 |
| B1 | CORE 7 | 11 | 3 | 3 Bed Apartment (Block B1) | 90 | 110.8 | 110.8 | DUAL | S/N | | 3 | 5 | 31.5 | 37.3 | 3.8 | 4.45 | 34 | 39.1 | 9 | 9 | 9 | 7 |
| B1 | CORE 7 | 12 | 3 | 1 Bed Apartment (Block B1) | 45 | 50.7 | 50.7 | DUAL | N/W | | 1 | 2 | 11.4 | 13.3 | 3.3 | 4 | 23 | 26 | 3 | 3.9 | 5 | 7.2 |
| B1 | CORE 8 | 13 | 1 | 2 Bed Apartment (Block B1) | 73 | | 74.3 | | E | | 2 | 4 | 24.4 | 25.9 | 3.6 | 3.6 | 30 | 30 | 6 | 6.6 | 7 | 7.2 |
| B1 | CORE 8 | 14 | 1 | 1 Bed Apartment (Block B1) | 37 | 48 | 48 | | E | | 1 | 2 | 11.4 | 11.4 | 3.3 | 3.1 | 23 | 24.8 | 3 | 3 | 7 | 7.2 |
| B1 | CORE 8 | 15 | 1 | 1 Bed Work-Live (Block B1) | NA | | 55 | | W | | 1 | 2 | 11.4 | 11.4 | 3.3 | 3.96 | 23 | 23 | 3 | 3.5 | 4 | 7.2 |
| B1 | CORE 8 | 16 | 1 | 1 Bed Work-Live (Block B1) | NA | | 55 | | W | | 1 | 2 | 11.4 | 11.4 | 3.3 | 3.96 | 23 | 23 | 3 | 3.5 | 4 | 7.2 |
| B1 | CORE 8 | 17 | 1 | 2 Bed Work-Live (Block B1) | NA | | 80 | | W | | 2 | 4 | 24.4 | 24.4 | 3.6 | 3.96 | 30 | 30.7 | 6 | 6 | 7 | 7.2 |
| B1 | CORE 8 | 18 | 1 | 3 Bed Apartment (Block B1) | 90 | | 97.1 | DUAL | W/S | | 3 | 5 | 31.5 | 34.2 | 3.8 | 5.1 | 34 | 34 | 9 | 9 | 9 | 9 |
| B1 | CORE 8 | 19 | 1 | 3 Bed Apartment (Block B1) | 90 | 106.5 | 106.5 | DUAL | S/E | | 3 | 6 | 31.5 | 44.2 | 3.8 | 3.95 | 34 | 34.3 | 9 | 9.1 | 9 | 7.2 |
| B1 | CORE 8 | 20 | 1 | 1 Bed Apartment (Block B1) | 45 | 50.4 | 50.4 | | E | | 1 | 2 | 11.4 | 11.4 | 3.3 | 3.6 | 23 | 28.8 | 3 | 3 | 5 | 7.2 |
| B1 | CORE 8 | 21 | 2 | 2 Bed Apartment (Block B1) | 73 | | 73 | | E | | 2 | 4 | 24.4 | 25.9 | 3.6 | 3.6 | 30 | 30 | 6 | 6.7 | 7 | 7.2 |
| B1 | CORE 8 | 22 | 2 | 2 Bed Apartment (Block B1) | 73 | 81.4 | 81.4 | DUAL | W/E | | 2 | 4 | 24.4 | 24.5 | 3.6 | 3.6 | 30 | 30.7 | 6 | 6 | 7 | 7.4 |
| B1 | CORE 8 | 23 | 2 | 2 Bed Apartment (Block B1) | 73 | | 75.2 | | W | | 2 | 4 | 24.4 | 25.5 | 3.6 | 3.6 | 30 | 30.7 | 6 | 6.6 | 7 | 7.2 |
| B1 | CORE 8 | 24 | 2 | 1 Bed Apartment (Block B1) | 45 | 52 | 52 | | W | | 1 | 2 | 11.4 | 11.4 | 3.3 | 3.6 | 23 | 27.3 | 3 | 3 | 5 | 7.2 |
| B1 | CORE 8 | 25 | 2 | 2 Bed Apartment (Block B1) | 73 | | 75.2 | | W | | 2 | 4 | 24.4 | 25.1 | 3.6 | 3.6 | 30 | 30.7 | 6 | 6 | 7 | 7.2 |
| B1 | CORE 8 | 26 | 2 | 2 Bed Apartment (Block B1) | 73 | 81.7 | 81.7 | DUAL | W/S | | 2 | 4 | 24.4 | 24.6 | 3.6 | 4.85 | 30 | 30.1 | 6 | 6.5 | 7 | 9 |
| B1 | CORE 8 | 27 | 2 | 3 Bed Apartment (Block B1) | 90 | 104.7 | 104.7 | DUAL | S/E | | 3 | 6 | 31.5 | 45.1 | 3.8 | 3.8 | 34 | 34.3 | 9 | 9.4 | 9 | 9 |
| B1 | CORE 8 | 28 | 2 | 1 Bed Apartment (Block B1) | 45 | 51.2 | 51.2 | | W | | 1 | 2 | 11.4 | 11.4 | 3.3 | 3.6 | 23 | 28.8 | 3 | 3 | 5 | 7.2 |
| B1 | CORE 8 | 29 | 3 | 2 Bed Apartment (Block B1) | 73 | | 73 | | E | | 2 | 4 | 24.4 | 25.9 | 3.6 | 3.6 | 30 | 30 | 6 | 6.7 | 7 | 7.2 |
| B1 | CORE 8 | 30 | 3 | 2 Bed Apartment (Block B1) | 73 | 81.9 | 81.9 | DUAL | W/E | | 2 | 4 | 24.4 | 24.5 | 3.6 | 3.6 | 30 | 32.4 | 6 | 6 | 7 | 7.4 |
| B1 | CORE 8 | 31 | 3 | 2 Bed Apartment (Block B1) | 73 | | 75.2 | | W | | 2 | 4 | 24.4 | 25.5 | 3.6 | 3.6 | 30 | 30.7 | 6 | 6.6 | 7 | 7.2 |
| B1 | CORE 8 | 32 | 3 | 1 Bed Apartment (Block B1) | 45 | 52 | 52 | | W | | 1 | 2 | 11.4 | 11.4 | 3.3 | 3.6 | 23 | 27.3 | 3 | 3 | 5 | 7.2 |
| B1 | CORE 8 | 33 | 3 | 2 Bed Apartment (Block B1) | 73 | | 75.2 | | W | | 2 | 4 | 24.4 | 25.1 | 3.6 | 3.6 | 30 | 30.7 | 6 | 6 | 7 | 7.2 |
| B1 | CORE 8 | 34 | 3 | 2 Bed Apartment (Block B1) | 73 | 81.7 | 81.7 | DUAL | W/S | | 2 | 4 | 24.4 | 24.6 | 3.6 | 4.85 | 30 | 30.1 | 6 | 6.3 | 7 | 9 |
| B1 | CORE 8 | 35 | 3 | 3 Bed Apartment (Block B1) | 90 | 110.8 | 110.8 | DUAL | S/E | | 3 | 6 | 31.5 | 45.1 | 3.8 | 3.8 | 34 | 34.3 | 9 | 8.4 | 9 | 7.2 |
| B1 | CORE 8 | 36 | 3 | 1 Bed Apartment (Block B1) | 45 | 52 | 52 | | W | | 1 | 2 | 11.4 | 11.4 | 3.3 | 3.6 | 23 | 28.8 | 3 | 3 | 5 | 7.2 |
| B1 | CORE 8 | 37 | 4 | 2 Bed Apartment (Block B1) | 73 | | 73 | | E | | 2 | 4 | 24.4 | 25.9 | 3.6 | 3.6 | 30 | 30 | 6 | 6.7 | 7 | 7.2 |
| B1 | CORE 8 | 38 | 4 | 2 Bed Apartment (Block B1) | 73 | 81.5 | 81.5 | DUAL | W/E | | 2 | 4 | 24.4 | 24.5 | 3.6 | 3.6 | 30 | 30.7 | 6 | 6 | 7 | 7.4 |
| B1 | CORE 8 | 39 | 4 | 2 Bed Apartment (Block B1) | 73 | | 75.2 | | W | | 2 | 4 | 24.4 | 25.5 | 3.6 | 3.6 | 30 | 30.7 | 6 | 6.6 | 7 | 7.2 |
| B1 | CORE 8 | 40 | 4 | 1 Bed Apartment (Block B1) | 45 | 52 | 52 | | W | | 1 | 2 | 11.4 | 11.4 | 3.3 | 3.6 | 23 | 27.3 | 3 | 3 | 5 | 7.2 |
| B1 | CORE 8 | 41 | 4 | 2 Bed Apartment (Block B1) | 73 | | 75.2 | | W | | 2 | 4 | 24.4 | 25.1 | 3.6 | 3.6 | 30 | 30.7 | 6 | 6 | 7 | 7.2 |
| B1 | CORE 8 | 42 | 4 | 2 Bed Apartment (Block B1) | 73 | 81.7 | 81.7 | DUAL | W/S | | 2 | 4 | 24.4 | 24.6 | 3.6 | 4.85 | 30 | 30.1 | 6 | 6.3 | 7 | 9 |
| B1 | CORE 8 | 43 | 4 | 2 Bed Apartment (Block B1) | 73 | 92.6 | 92.6 | DUAL | S/E | | 2 | 4 | 24.4 | 29.1 | 3.6 | 6.4 | 30 | 41.5 | 6 | 6 | 7 | 7.2 |
| B1 | CORE 8 | 44 | 4 | 1 Bed Apartment (Block B1) | 45 | 52 | 52 | | W | | 1 | 2 | 11.4 | 11.4 | 3.3 | 3.6 | 23 | 28.8 | 3 | 3 | 5 | 7.2 |
| B1 | CORE 8 | 45 | 5 | 2 Bed Apartment (Block B1) | 73 | | 73 | | E | | 2 | 4 | 24.4 | 25.9 | 3.6 | 3.6 | 30 | 30 | 6 | 6.7 | 7 | 7.2 |
| B1 | CORE 8 | 46 | 5 | 2 Bed Apartment (Block B1) | 73 | 81.5 | 81.5 | DUAL | W/E | | 2 | 4 | 24.4 | 24.5 | 3.6 | 3.6 | 30 | 30.7 | 6 | 6 | 7 | 7.4 |
| B1 | CORE 8 | 47 | 5 | 2 Bed Apartment (Block B1) | 73 | | 75.2 | | W | | 2 | 4 | 24.4 | 25.5 | 3.6 | 3.6 | 30 | 30.7 | 6 | 6.6 | 7 | 7.2 |
| B1 | CORE 8 | 48 | 5 | 1 Bed Apartment (Block B1) | 45 | 50.5 | 50.5 | | W | | 1 | 2 | 11.4 | 11.4 | 3.3 | 3.6 | 23 | 27.3 | 3 | 3 | 5 | 7.2 |
| B1 | CORE 8 | 49 | 5 | 2 Bed Apartment (Block B1) | 73 | | 75.2 | | W | | 2 | 4 | 24.4 | 25.1 | 3.6 | 3.6 | 30 | 30.7 | 6 | 6 | 7 | 7.2 |
| B1 | CORE 8 | 50 | 5 | 2 Bed Apartment (Block B1) | 73 | 81.7 | 81.7 | DUAL | W/S | | 2 | 4 | 24.4 | 24.6 | 3.6 | 4.85 | 30 | 30.1 | 6 | 6.5 | 7 | 9 |
| B1 | CORE 8 | 51 | 5 | 2 Bed Apartment (Block B1) | 73 | 98.1 | 98.1 | DUAL | S/E | | 2 | 4 | 24.4 | 29.1 | 3.6 | 6.4 | 30 | 42.7 | 6 | 6 | 7 | 7.2 |
| B1 | CORE 8 | 52 | 5 | 1 Bed Apartment (Block B1) | 45 | 52 | 52 | | W | | 1 | 2 | 11.4 | 11.4 | 3.3 | 3.6 | 23 | 28.8 | 3 | 3 | 5 | 7.2 |

| 1722-HOUSING QUALITY ASSESSMENT | | | | | | | | | | | | | | | | | | | | | | |
|---------------------------------|------------------|-------------|-------------|----------------------------|--|--|--------------------------------------|--------|-------------|--|-----------------|------------------|--|---|-------------------------------------|-------------------------------------|---|--|---|---|---|---|
| Apartment Areas - Block | | | | | | | | | | | | | | | | | | | | | | |
| Building | STAIRCORE NUMBER | UNIT NUMBER | FLOOR LEVEL | UNIT DESCRIPTION | MIN UNIT AREA REQUIRED (m ²) | UNITS AREAS > MIN AREA +10%(m ²) | UNIT AREA ACHIEVED (m ²) | ASPECT | ORIENTATION | CEILING HEIGHT (Kitchen/Living/Dining) | No. of Bedrooms | No. of Bedspaces | Aggregate Bedroom Areas Required (m ²) | Aggregate Bedroom Area Achieved (m ²) | Main Living Room Width Required (m) | Main Living Room Width Achieved (m) | Kitchen/Living / Dining Area Required (m ²) | Kitchen/Living /Dining Area Achieved (m ²) | Aggregate Storage Area Required (m ²) | Aggregate Storage Area Achieved (m ²) | Garden/ Terrace/Balcony Area Required (m ²) | Garden/ Terrace/Balcony Area Achieved (m ²) |
| B1 | CORE 8 | 53 | 6 | 2 Bed Apartment (Block B1) | 73 | | 73 | | E | | 2 | 4 | 24.4 | 25.9 | 3.6 | 3.6 | 30 | 30 | 6 | 6.7 | 7 | 9.4 |
| B1 | CORE 8 | 54 | 6 | 2 Bed Apartment (Block B1) | 73 | 81.5 | 81.5 | DUAL | W/E | | 2 | 4 | 24.4 | 24.5 | 3.6 | 3.6 | 30 | 32.4 | 6 | 6 | 7 | 7.4 |
| B1 | CORE 8 | 55 | 6 | 2 Bed Apartment (Block B1) | 73 | | 75.2 | | W | | 2 | 4 | 24.4 | 25.5 | 3.6 | 3.6 | 30 | 30.7 | 6 | 6 | 7 | 7.2 |
| B1 | CORE 8 | 56 | 6 | 1Bed Apartment (Block B1) | 45 | 50.5 | 50.5 | | W | | 1 | 2 | 11.4 | 11.4 | 3.3 | 3.6 | 23 | 27.3 | 3 | 3 | 5 | 7.2 |
| B1 | CORE 8 | 57 | 6 | 2 Bed Apartment (Block B1) | 73 | | 75.2 | DUAL | W/S | | 2 | 4 | 24.4 | 24.6 | 3.6 | 4.3 | 30 | 30.3 | 6 | 6 | 7 | 7.2 |
| B1 | CORE 8 | 58 | 6 | 2 Bed Apartment (Block B1) | 73 | | 75.2 | DUAL | E/S | | 2 | 4 | 24.4 | 25 | 3.6 | 3.6 | 30 | 30.2 | 6 | 6 | 7 | 7.2 |
| B1 | CORE 9 | 1 | 1 | 1 Bed Apartment (Block B1) | 45 | 49.5 | 49.5 | DUAL | N/W | | 1 | 2 | 11.4 | 11.4 | 3.3 | 3.3 | 23 | 26.3 | 3 | 3 | 5 | 9 |
| B1 | CORE 9 | 2 | 1 | 1 Bed Apartment (Block B1) | 45 | 52 | 52 | | N | | 1 | 2 | 11.4 | 11.4 | 3.3 | 3.6 | 23 | 28.8 | 3 | 3 | 5 | 7.2 |
| B1 | CORE 9 | 3 | 1 | 1 Bed Apartment (Block B1) | 45 | 52 | 52 | | N | | 1 | 2 | 11.4 | 11.4 | 3.3 | 3.6 | 23 | 28.8 | 3 | 3 | 5 | 7.2 |
| B2 | CORE 9 | 4 | 1 | 1 Bed Apartment (Block B1) | 45 | 52 | 52 | | N | | 1 | 2 | 11.4 | 11.4 | 3.3 | 3.6 | 23 | 28.8 | 3 | 3 | 5 | 7.2 |
| B1 | CORE 9 | 5 | 1 | 1 Bed Apartment (Block B1) | 45 | 52 | 52 | | N | | 1 | 2 | 11.4 | 11.4 | 3.3 | 3.6 | 23 | 28.8 | 3 | 3 | 5 | 7.2 |
| B1 | CORE 9 | 6 | 1 | 1 Bed Work-Live (Block B1) | NA | | 52 | | N | | 1 | 2 | 11.4 | 11.4 | 3.3 | 3.6 | 23 | 24.8 | 3 | 3 | 4 | 7.2 |
| B1 | CORE 9 | 7 | 1 | 1 Bed Work-Live (Block B1) | NA | | 52 | DUAL | N/E | | 1 | 2 | 11.4 | 11.4 | 3.3 | 3.6 | 23 | 24.8 | 3 | 3 | 4 | 7.2 |
| B1 | CORE 9 | 8 | 1 | 3 Bed Apartment (Block B1) | 90 | 105.3 | 105.3 | DUAL | S/E | | 3 | | 31.5 | 40.2 | 3.8 | 3.6 | 34 | 34.1 | 9 | 10.3 | 9 | 14 |
| B1 | CORE 9 | 9 | 1 | 2 Bed Apartment (Block B1) | 73 | | 73.1 | DUAL | S/W | | 2 | 4 | 24.4 | 26.4 | 3.6 | 4.5 | 30 | 30 | 6 | 6 | 7 | 7 |
| B1 | CORE 9 | 10 | 1 | 2 Bed Apartment (Block B1) | 73 | | 73 | | E | | 2 | 4 | 24.4 | 24.4 | 3.6 | 3.65 | 30 | 30 | 6 | 6 | 7 | 7.2 |
| B1 | CORE 9 | 11 | 1 | 1 Bed Apartment (Block B1) | 45 | | 45.5 | | E | | 1 | 2 | 30 | 55 | 4 | 4 | 30 | 55 | 3 | 3.1 | 4 | 7.2 |
| B1 | CORE 9 | 12 | 1 | 1 Bed Work-Live (Block B1) | NA | | 55 | | W | | 1 | 2 | 11.4 | 12.2 | 3.3 | 3.96 | 23 | 23 | 3 | 3.5 | 4 | 7.2 |
| B1 | CORE 9 | 13 | 1 | 1 Bed Work-Live (Block B1) | NA | | 55 | | W | | 1 | 2 | 11.4 | 12.2 | 3.3 | 3.96 | 23 | 23 | 3 | 3.5 | 4 | 7.2 |
| B1 | CORE 9 | 14 | 1 | 1 Bed Work-Live (Block B1) | NA | | 55 | | W | | 1 | 2 | 11.4 | 12.2 | 3.3 | 3.96 | 23 | 23 | 3 | 3.5 | 4 | 7.2 |
| B1 | CORE 9 | 15 | 2 | 2 Bed Apartment (Block B1) | 73 | | 73 | | E | | 2 | 4 | 24.4 | 24.4 | 3.6 | 3.65 | 30 | 30 | 6 | 6.1 | 7 | 7.2 |
| B1 | CORE 9 | 16 | 2 | 2 Bed Apartment (Block B1) | 73 | | 75.4 | DUAL | W/E | | 2 | 4 | 24.4 | 24.4 | 3.6 | 3.6 | 30 | 30 | 6 | 6 | 7 | 7.4 |
| B1 | CORE 9 | 17 | 2 | 1 Bed Apartment (Block B1) | 45 | | 50 | | W | | 1 | 2 | 11.4 | 11.4 | 3.3 | 3.35 | 23 | 26.8 | 3 | 3 | 5 | 7.2 |
| B1 | CORE 9 | 18 | 2 | 1 Bed Apartment (Block B1) | 45 | | 50 | | W | | 1 | 2 | 11.4 | 11.4 | 3.3 | 3.35 | 23 | 26.8 | 3 | 3 | 5 | 7.2 |
| B1 | CORE 9 | 19 | 2 | 3 Bed Apartment (Block B1) | 90 | 100 | 100 | DUAL | N/W | | 3 | 6 | 31.5 | 36.3 | 3.8 | 5.5 | 34 | 34.3 | 9 | 9 | 9 | 9 |
| B1 | CORE 9 | 20 | 2 | 2 Bed Apartment (Block B1) | 73 | | 75.6 | | N | | 2 | 4 | 24.4 | 25.3 | 3.6 | 3.645 | 30 | 31.4 | 6 | 6 | 7 | 7.2 |
| B1 | CORE 9 | 21 | 2 | 1 Bed Apartment (Block B1) | 45 | 50 | 50 | | N | | 1 | 2 | 11.4 | 11.4 | 3.3 | 3.35 | 23 | 26.8 | 3 | 3 | 5 | 7.2 |
| B1 | CORE 9 | 22 | 2 | 2 Bed Apartment (Block B1) | 73 | | 74.9 | | N | | 2 | 4 | 24.4 | 25.5 | 3.6 | 3.65 | 30 | 30.1 | 6 | 6.7 | 7 | 7.2 |
| B1 | CORE 9 | 23 | 2 | 3 Bed Apartment (Block B1) | 90 | 102.9 | 102.9 | DUAL | N/S | | 3 | 5 | 31.5 | 34.6 | 3.8 | 4.45 | 34 | 34 | 9 | 8.1 | 9 | 13.8 |
| B1 | CORE 9 | 24 | 2 | 1 Bed Apartment (Block B1) | 45 | | 49.4 | | S/W | | 1 | 2 | 11.4 | 13.3 | 3.3 | 3.6 | 23 | 23.4 | 3 | 3.9 | 5 | 7.2 |
| B1 | CORE 9 | 25 | 3 | 2 Bed Apartment (Block B1) | 73 | | 73 | | E | | 2 | 4 | 24.4 | 24.4 | 3.6 | 3.65 | 30 | 30 | 6 | 6 | 7 | 7.2 |
| B1 | CORE 9 | 26 | 3 | 2 Bed Apartment (Block B1) | 73 | | 75.4 | DUAL | W/E | | 2 | 4 | 24.4 | 24.4 | 3.6 | 3.6 | 30 | 30 | 6 | 6 | 7 | 7.4 |
| B1 | CORE 9 | 27 | 3 | 1 Bed Apartment (Block B1) | 45 | | 49.1 | | N/W | | 1 | 2 | 11.4 | 11.4 | 3.3 | 3.35 | 23 | 26.8 | 3 | 3 | 5 | 7.2 |
| B1 | CORE 9 | 28 | 3 | 1 Bed Apartment (Block B1) | 45 | | 49.1 | | N/W | | 1 | 2 | 11.4 | 11.4 | 3.3 | 3.35 | 23 | 26.8 | 3 | 3 | 5 | 7.2 |
| B1 | CORE 9 | 29 | 3 | 3 Bed Apartment (Block B1) | 90 | 100 | 100 | DUAL | N | | 3 | 6 | 31.5 | 36.3 | 3.8 | 5.8 | 34 | 34.4 | 9 | 9 | 9 | 9 |
| B1 | CORE 9 | 30 | 3 | 2 Bed Apartment (Block B1) | 73 | | 75.5 | | N | | 2 | 4 | 24.4 | 25.3 | 3.6 | 3.645 | 30 | 31.4 | 6 | 6 | 7 | 7.2 |
| B1 | CORE 9 | 31 | 3 | 1 Bed Apartment (Block B1) | 45 | 50 | 50 | | N | | 1 | 2 | 11.4 | 12 | 3.3 | 3.35 | 23 | 31.4 | 3 | 3 | 5 | 7.2 |
| B1 | CORE 9 | 32 | 3 | 2 Bed Apartment (Block B1) | 73 | | 74.9 | | N | | 2 | 4 | 24.4 | 25.5 | 3.6 | 3.65 | 30 | 30.1 | 6 | 6.7 | 7 | 7.2 |
| B1 | CORE 9 | 33 | 3 | 3 Bed Apartment (Block B1) | 90 | 102.9 | 102.9 | DUAL | N/S | | 3 | 5 | 31.5 | 37.9 | 3.8 | 4.45 | 34 | 24.6 | 9 | 7.7 | 9 | 13.9 |
| B1 | CORE 9 | 34 | 3 | 1 Bed Apartment (Block B1) | 45 | | 49.4 | DUAL | S/W | | 1 | 2 | 11.4 | 13.3 | 3.3 | 3.6 | 23 | 23.4 | 3 | 3.9 | 5 | 7.2 |
| B1 | CORE 9 | 35 | 4 | 2 Bed Apartment (Block B1) | 73 | | 75.5 | DUAL | N/E | | 2 | 4 | 24.4 | 25.3 | 3.6 | 3.6 | 30 | 31.4 | 6 | 6 | 7 | 7.2 |
| B1 | CORE 9 | 36 | 4 | 3 Bed Apartment (Block B1) | 90 | 100 | 100 | DUAL | N/W | | 3 | 6 | 31.5 | 36.6 | 3.8 | 5.5 | 34 | 34.4 | 9 | 9 | 9 | 9 |
| B1 | CORE 9 | 37 | 4 | 1 Bed Apartment (Block B1) | 45 | | 49 | | W | | 1 | 2 | 11.4 | 11.4 | 3.3 | 3.35 | 23 | 27.3 | 3 | 3 | 5 | 7.2 |
| B1 | CORE 9 | 38 | 4 | 1 Bed Apartment (Block B1) | 45 | | 49 | | W | | 1 | 2 | 11.4 | 11.4 | 3.3 | 3.35 | 23 | 27.3 | 1 | 3 | 5 | 7.2 |

| | | | | | | | | | | | | | | | | | | | | | | |
|---|--------|----|---|----------------------------|----|------|-------|------|-----|-----|---|---|------|------|-----|-------|----|------|---|-----|---|------|
| B1 | CORE 9 | 39 | 4 | 2 Bed Apartment (Block B1) | 73 | | 74.5 | DUAL | W/E | | 2 | 4 | 24.4 | 24.4 | 3.6 | 3.6 | 30 | 30 | 6 | 6 | 7 | 7.4 |
| B1 | CORE 9 | 40 | 4 | 2 Bed Apartment (Block B1) | 73 | | 73 | | E | | 2 | 4 | 24.4 | 25.9 | 3.6 | 3.6 | 30 | 30 | 6 | 6 | 7 | 7.2 |
| B1 | CORE 9 | 41 | 5 | 2 Bed Apartment (Block B1) | 73 | | 75.5 | DUAL | N | | 2 | 4 | 24.4 | 25.3 | 3.6 | 3.645 | 30 | 31.4 | 6 | 6 | 7 | 7.2 |
| B1 | CORE 9 | 42 | 5 | 3 Bed Apartment (Block B1) | 90 | 100 | 100 | DUAL | N/W | | 3 | 6 | 31.5 | 36.3 | 3.8 | 5.5 | 34 | 34.4 | 9 | 9 | 9 | 9 |
| B1 | CORE 9 | 43 | 5 | 1 Bed Apartment (Block B1) | 45 | | 49 | | W | | 1 | 2 | 11.4 | 11.4 | 3.3 | 3.35 | 23 | 27.3 | 3 | 3 | 5 | 7.2 |
| B1 | CORE 9 | 44 | 5 | 1 Bed Apartment (Block B1) | 45 | | 49 | | W | | 1 | 2 | 11.4 | 11.4 | 3.3 | 3.35 | 23 | 27.3 | 3 | 3 | 5 | 7.2 |
| B1 | CORE 9 | 45 | 5 | 2 Bed Apartment (Block B1) | 73 | | 75.4 | DUAL | W/E | | 2 | 4 | 24.4 | 24.4 | 3.6 | 3.6 | 30 | 30 | 6 | 6 | 7 | 7.4 |
| B1 | CORE 9 | 46 | 5 | 2 Bed Apartment (Block B1) | 73 | | 73 | | E | | 2 | 4 | 24.4 | 24.4 | 3.6 | 3.6 | 30 | 30 | 6 | 6 | 7 | 7.4 |
| B1 | CORE 9 | 47 | 6 | 3 Bed Apartment (Block B1) | 90 | | 104 | DUAL | N/W | | 3 | 6 | 31.5 | 36.8 | 3.8 | 3.8 | 34 | 34 | 9 | 9 | 9 | 65 |
| B1 | CORE 9 | 48 | 6 | 1 Bed Apartment (Block B1) | 45 | | 49.1 | | W | | 1 | 2 | 11.4 | 11.4 | 3.3 | 3.35 | 23 | 27.3 | 3 | 3 | 5 | 7.2 |
| B1 | CORE 9 | 49 | 6 | 1 Bed Apartment (Block B1) | 45 | | 49.1 | | W | | 1 | 2 | 11.4 | 11.4 | 3.3 | 3.35 | 23 | 27.3 | 3 | 3 | 5 | 7.2 |
| B1 | CORE 9 | 50 | 6 | 2 Bed Apartment (Block B1) | 73 | | 74.5 | DUAL | W/E | | 2 | 4 | 24.4 | 24.4 | 3.6 | 3.6 | 30 | 30 | 6 | 6 | 7 | 7.4 |
| B1 | CORE 9 | 51 | 6 | 2 Bed Apartment (Block B1) | 73 | | 73 | | E | | 2 | 4 | 24.4 | 24.4 | 3.6 | 3.7 | 30 | 30 | 6 | 6 | 7 | 9.4 |
| B1 | CORE 9 | 52 | 7 | 2 Bed Apartment (Block B1) | 73 | | 97.3 | DUAL | N/W | | 2 | 4 | 24.4 | 25.5 | 3.6 | 6.5 | 30 | 41 | 6 | 6.4 | 7 | 7.2 |
| B1 | CORE 9 | 53 | 7 | 1 Bed Apartment (Block B1) | 45 | 50.2 | 50.2 | | W | | 1 | 2 | 11.4 | 11.4 | 3.3 | 3.35 | 23 | 27.3 | 3 | 3 | 5 | 7.2 |
| B1 | CORE 9 | 54 | 7 | 1 Bed Apartment (Block B1) | 45 | 50 | 50 | | W | | 1 | 2 | 11.4 | 11.4 | 3.3 | 3.35 | 23 | 27 | 3 | 3 | 5 | 7.2 |
| B1 | CORE 9 | 55 | 7 | 2 Bed Apartment (Block B1) | 73 | | 74.5 | DUAL | W/S | | 2 | 4 | 24.4 | 24.9 | 3.6 | 4.85 | 30 | 30.1 | 6 | 6 | 7 | 73 |
| B1 | CORE 9 | 56 | 7 | 2 Bed Apartment (Block B1) | 73 | 88.6 | 88.6 | DUAL | S/E | | 2 | 4 | 24.4 | 29.4 | 3.6 | 5.8 | 30 | 36.8 | 6 | 6.1 | 7 | 89 |
| B1 | CORE 9 | 57 | 7 | 2 Bed Apartment (Block B1) | 73 | 85.9 | 85.9 | | E | | 2 | 4 | 24.4 | 24.6 | 3.6 | 5.7 | 30 | 41.9 | 6 | 6.1 | 7 | 12.3 |
| | | | | | | | | | | | | | | | | | | | | | | |
| | | | | | | | | | | | | | | | | | | | | | | |
| TOTAL FLOOR AREA: | | | | | | | 31077 | | | | | | | | | | | | | | | |
| TOTAL FLOOR AREA (UNITS WITH FLOOR AREA > MIN AREA + 10%) : | | | | | | | 16041 | | | 52% | | | 224 | | | | | | | | | |
| NUMBER OF DUAL ASPECT APARTMENTS : | | | | | | | 164 | | | 37% | | | | | | | | | | | | |
| TOTAL NUMBER OF APARTMENTS: | | | | | | | 438 | | | | | | | | | | | | | | | |

2.2 Sunlight Access

(C) Garden and Open Spaces Results

While providing good levels of daylight and sunlight in living spaces is important, it is also essential to apply the same mentality to outside spaces and amenity areas. An adequately lit garden or open space creates a rich ambience that any occupant would find appealing. A well-lit garden/open space will add value to a property, so it is essential that careful consideration is taken when assessing these spaces.

The basis of this calculation is to assess if 50% of the open space will achieve more than two hours' worth of sunlight during the equinox (21st March).

This calculation was carried out for the amenity areas associated with blocks A1, A2, A3, B1 and B2 to demonstrate the design intent. Please see calculations below;

Amenity Area A

Total Amenity Area = 487m²

Total amenity area receiving more than 2 Hours' worth of sunlight during the equinox = 318m²

Percentage receiving 2 Hours' worth of sunlight during the equinox = 65%

Amenity Area B

Total Amenity Area = 398m²

Total amenity area receiving more than 2 Hours' worth of sunlight during the equinox = 221m²

Percentage receiving 2 Hours' worth of sunlight during the equinox = 56%

Amenity Area C

Total Amenity Area = 212m²

Total amenity area receiving more than 2 Hours' worth of sunlight during the equinox = 212m²

Percentage receiving 2 Hours' worth of sunlight during the equinox = 100%

Amenity Area D

Total Amenity Area = 508m²

Total amenity area receiving more than 2 Hours' worth of sunlight during the equinox = 290m²

Percentage receiving 2 Hours' worth of sunlight during the equinox = 57%

Amenity Area E

Total Amenity Area = 132m²

Total amenity area receiving more than 2 Hours' worth of sunlight during the equinox = 132m²

Percentage receiving 2 Hours' worth of sunlight during the equinox = 100%

Amenity Area F

Total Amenity Area = 540m²

Total amenity area receiving more than 2 Hours' worth of sunlight during the equinox = 527m²

Percentage receiving 2 Hours' worth of sunlight during the equinox = 98%

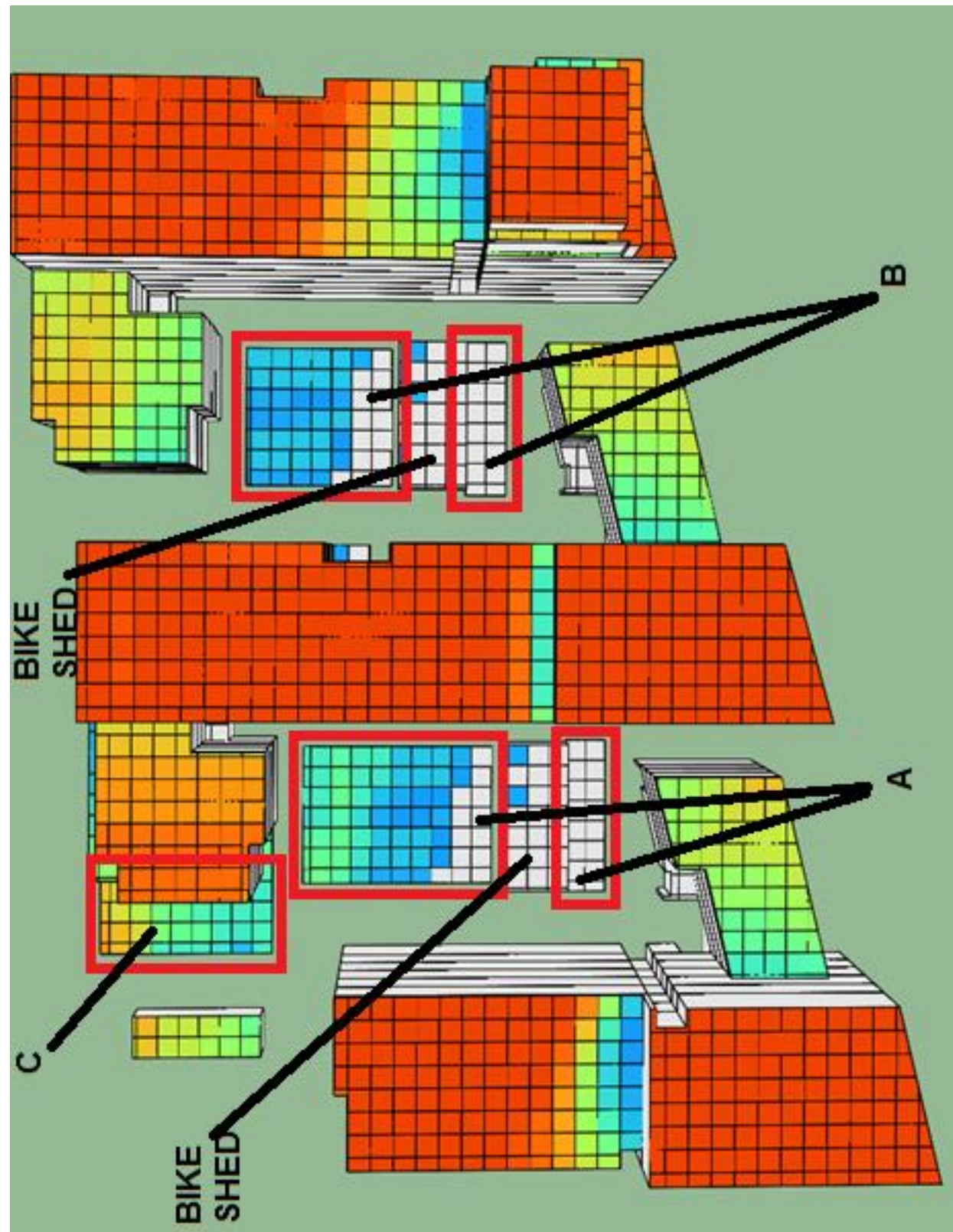


Figure 9 - Garden and Open Spaces Results A1, A2 & A3

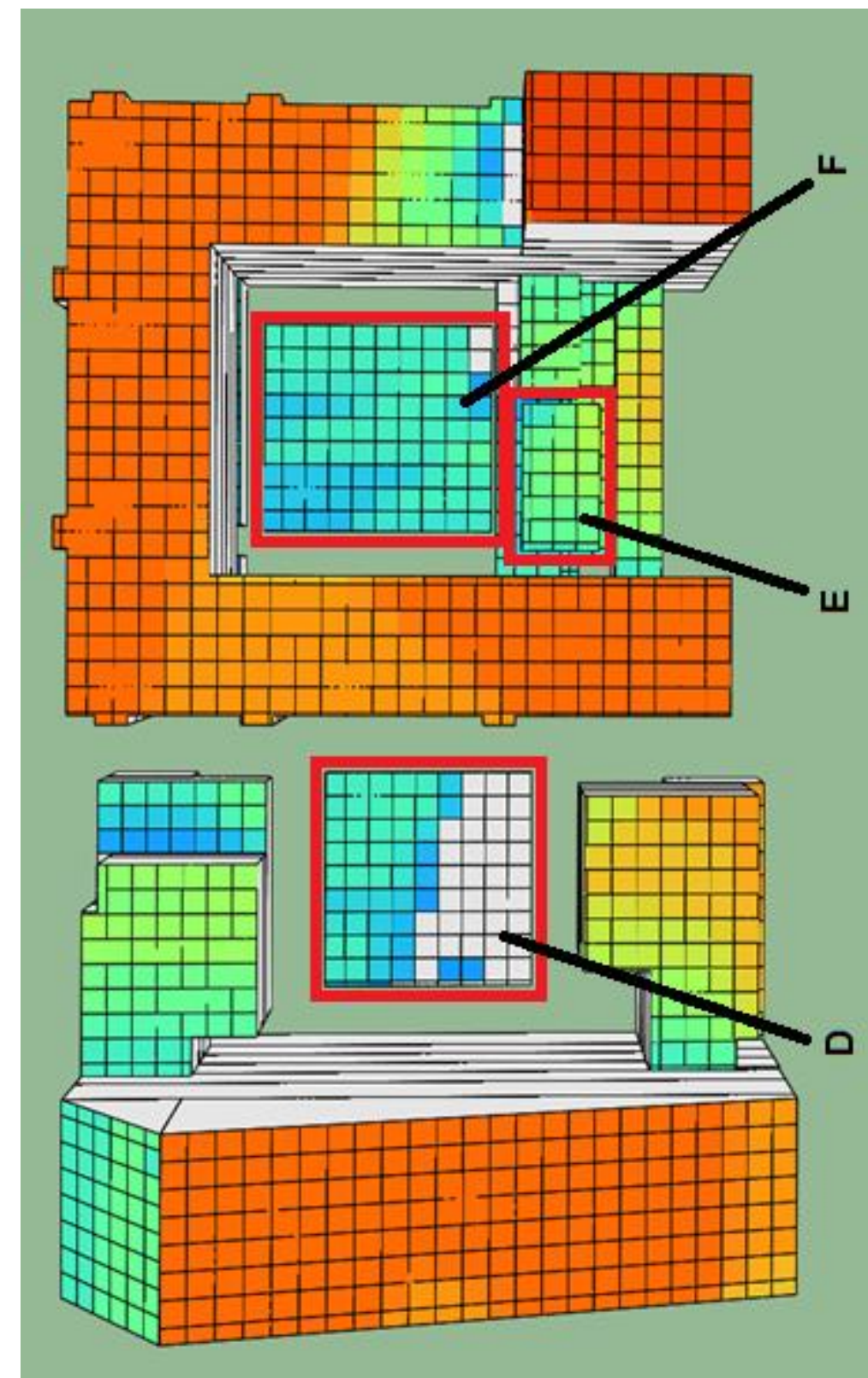


Figure 10 - Garden and Open Spaces Results B1 & B2

2.2 Unit Mix / Amenity Breakdown

1722 - BELGARD GARDENS - Mixed Use Development
Tallaght, Co. Dublin

SUMMARY DEVELOPMENT SCHEDULE

28th April 2018

| | Units | GFA | %age |
|---|-------|-------|--------|
| | (no) | (m2) | |
| PHASE 1 | | | |
| MIX SUMMARY - BELGARD GARDENS | | | |
| MIXED USE/ FACILITIES | | | |
| Childcare Facility | | 380 | 16.5% |
| Resident's Facilities + Amenities | | 777 | 33.8% |
| Commercial/Retail/ Mixed Use/ Work Live | | 1,141 | 49.6% |
| | | | |
| | | | |
| sub total | | 2,298 | 100.0% |
| RESIDENTIAL | | | |
| Student Accommodation (PBSA) | 403 | | 0.0% |
| Apartments | 438 | | 0.0% |
| | - | | |
| sub total | 841 | - | 0.0% |
| TOTAL | 841 | 2,298 | 100.0% |

| | |
|---------------------------------|-------------------------------|
| DEVELOPMENT SUMMARY (PHASE 1) | |
| SITE AREA: | 34,214 m2 (3.42 Hectares) |
| RESIDENTIAL: | |
| TOTAL APARTMENTS: | 438 |
| TOTAL STUDENT ACCOMMODATION | 403 Beds |
| TOTAL COMMERCIAL + AMENITY USES | 1,918 m2 |
| PLOT RATIO: | 1.69 (Previous LAP 1.5 - 2.0) |
| SITE COVERAGE: | 37% |

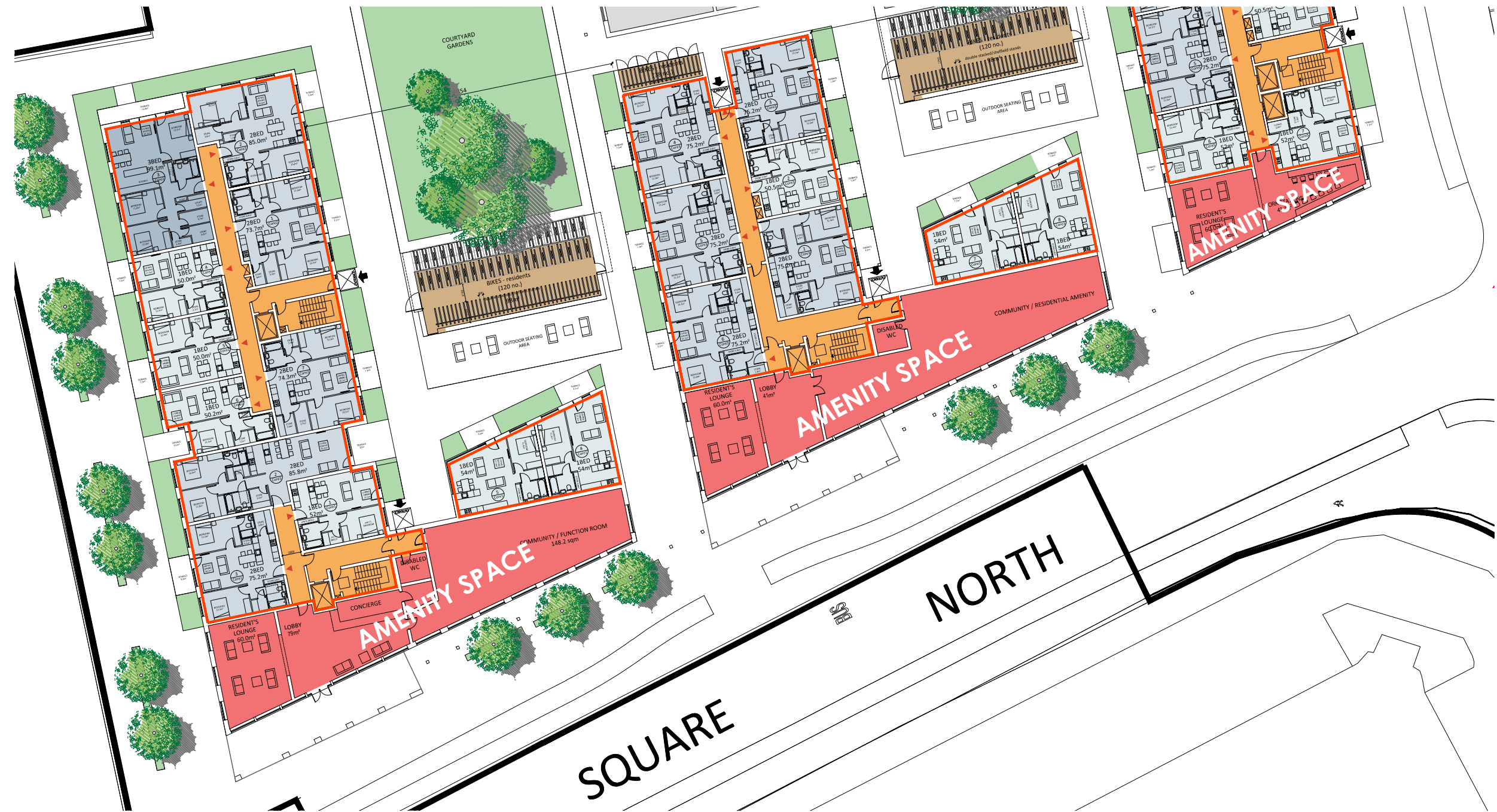
| | |
|-----------------|-------|
| CAR PARKING | |
| Podium | 107 |
| Surface Level | 22 |
| BICYCLE PARKING | |
| Bike Parking | 1,227 |
| Beeper Bikes | 20 |
| | |

| | | | |
|-------------------|-----|--|------|
| HQA | | | |
| DUAL ASPECT RATIO | | | 41% |
| | | | |
| UNITS MIX | | | |
| Total 1 Bed | 158 | | 26% |
| Total 2 Bed | 230 | | 59% |
| Total 3 Bed | 50 | | 15% |
| TOTAL | 438 | | 100% |



2.2 Tenant Amenities

RESIDENT AMENITIES



PRECEDENT PROJECTS



Clancy Quay Common Room

- 690m.sq of Amenity space for residents fronting onto Belgard road creating an active frontage with an animated interface between the development and the street.
- Facilities for residents along Belgard Square North including lounges, a gym, concierge and meeting spaces. Large windows for the facilities and primary entrances to the apartments will face onto Belgard Square North and will animate the street and provide good passive surveillance.



Clancy Quay Games Room



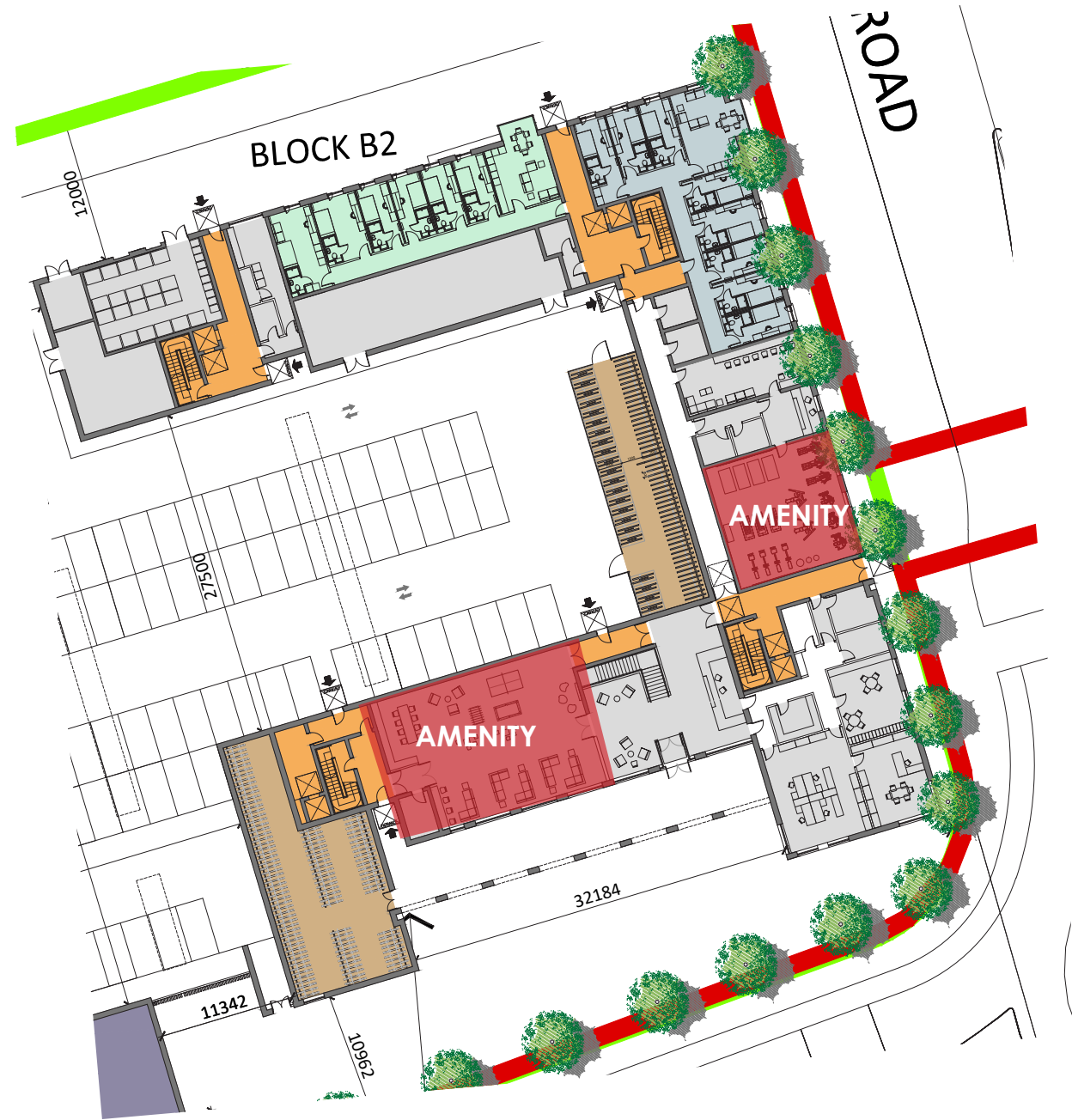
Pike & Rose Common Area

2.2 Tenant Amenities

STUDENT AMENITIES



First Floor Podium Courtyard



Ground Floor Common / Games / Gym Amenity

PRECEDENT PROJECTS



Bristol Student Accommodation



The Student Hotel Amsterdam West

- 200m.sq comunal area with games / social space

- 100m.sq gym for student residents

Purpose Built Student Accommodation

Given the proximity of the site to Tallaght Institute of Technology, a student accommodation scheme providing 403 no. bedspaces is proposed. The bedspaces are arranged in house units of between 6 – 8 bedrooms. Each bedroom will have a private ensuite with a shared kitchen / living area between each house unit. The accommodation will be managed by an operator with a 24/7 presence on site to ensure the smooth management of the residence on a day to day basis. On site amenity facilities for students will include a common room, games area, gym and study room. An internal courtyard at podium level will provide a space for students to meet and relax.



Caterbury Student Accommodation gym

2.2 Occupant Privacy



- The facade along Belgard Square north has been designed with privacy as one of its primary concerns. This is achieved through covered balconies with brick piers on the taller elements, and with screens and frames on the lower elements along the street. This creates high quality, useable private amenity space for the developments tenants.



Covered balconies and screens create threshold edge to main street

2.2 Active Frontage

Primary active frontages are provided on Belgard Road and Belgard Square North in a variety of ways (as shown on adjacent page):

- Facilities for residents along Belgard Square North including lounges, a gym, concierge and meeting spaces. Large windows for the facilities and primary entrances to the apartments will face onto Belgard Square North and will animate the street and provide good passive surveillance
- Flexible units which may accommodate retail or retail services are located to the east of the main access avenue to the scheme. These will benefit from footfall along Belgard Square North and also from the adjacent student accommodation scheme
- The student accommodation scheme will also provide excellent activity along Belgard Square North and turning the corner onto Belgard Road. The primary entrance to the scheme will be located on Belgard Square North with a range of active uses including a gym, common room and multimedia room all having frontage onto the adjacent streets.



The colonnade along Belgard Square North allows the building line to step in and out, creating a strong rhythm, whilst also on ground level maintaining a constant line of pavement. They also provide a focal point for the entrance to the amenity space, which ensures constant passive surveillance minimising the chance of any anti-social behaviour under the colonnade.

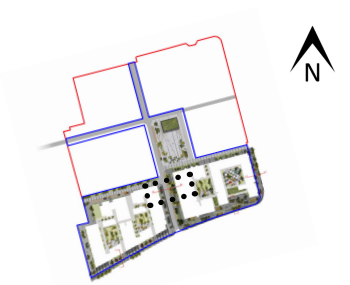
2.2 Mobility Management

4.2 Street Sections

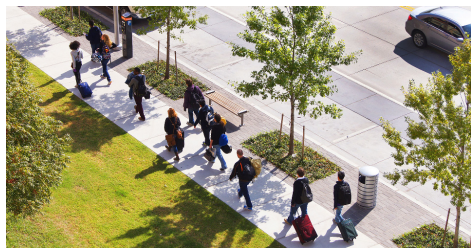
- Proposed street typologies provide pedestrians and cyclists with priority over vehicular traffic
- Urban links to key destinations such as Tallaght IT and Tallaght University Hospital allow for convenient and safe travel links
- A high Quality Landscape Design with includes bio-retention strips provides for SuDS whilst also contributing to the green landscaping of the sheme
- The green landscaping acts as buffer to more vulnerable road users
- High quality Street Furniture which is robust and easy to maintain will be provided



Main Access Road Section
Scale 1:100

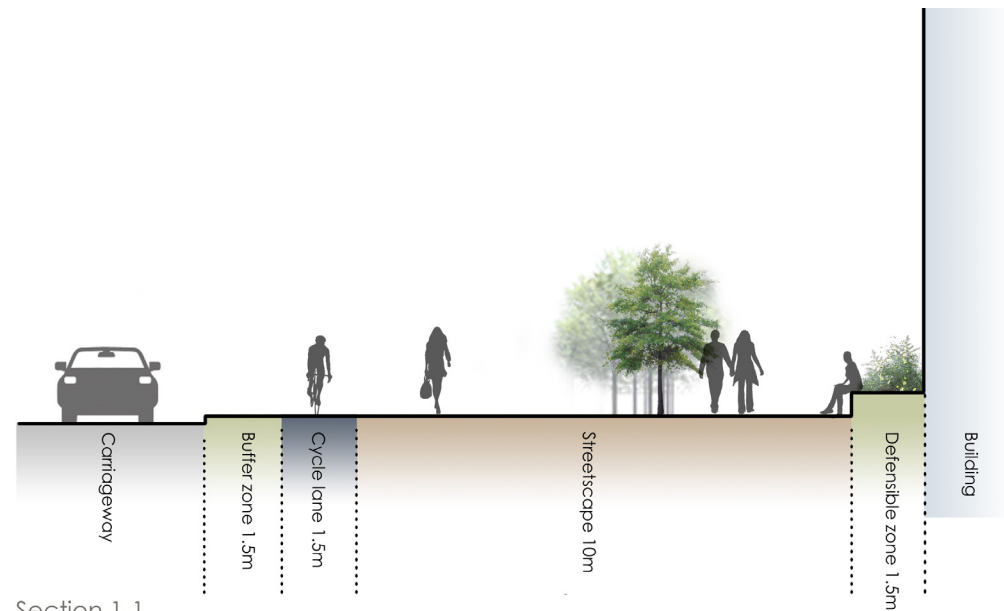


Docklands city Park, Melbourne, Australia

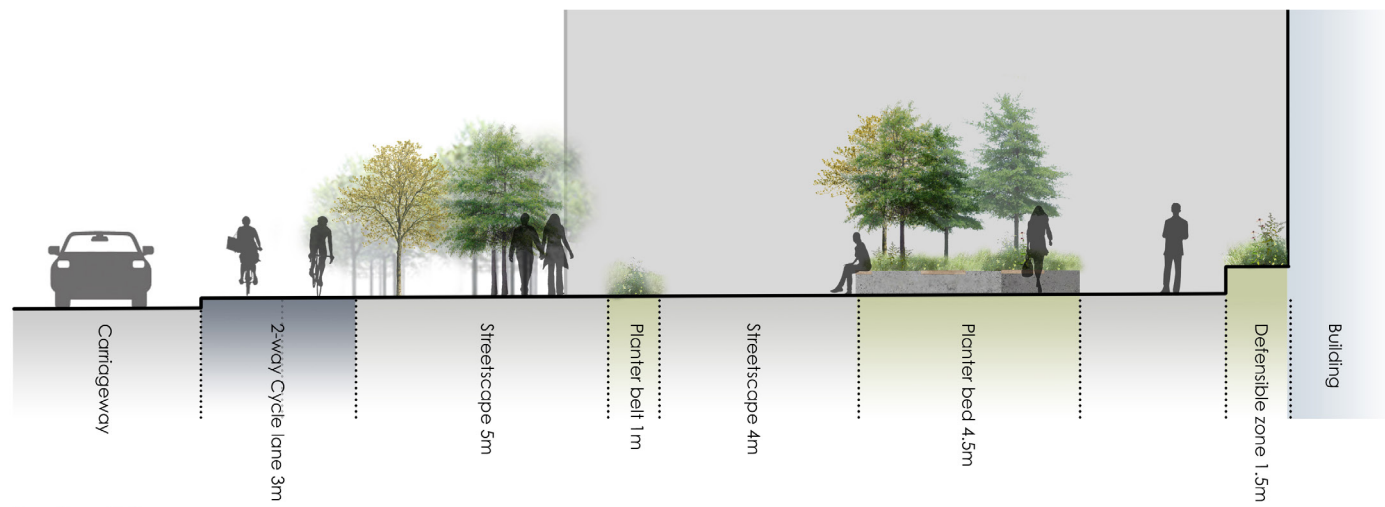


Avenues Mermoz et Pinel, Quartier Mermoz, Lyon, France

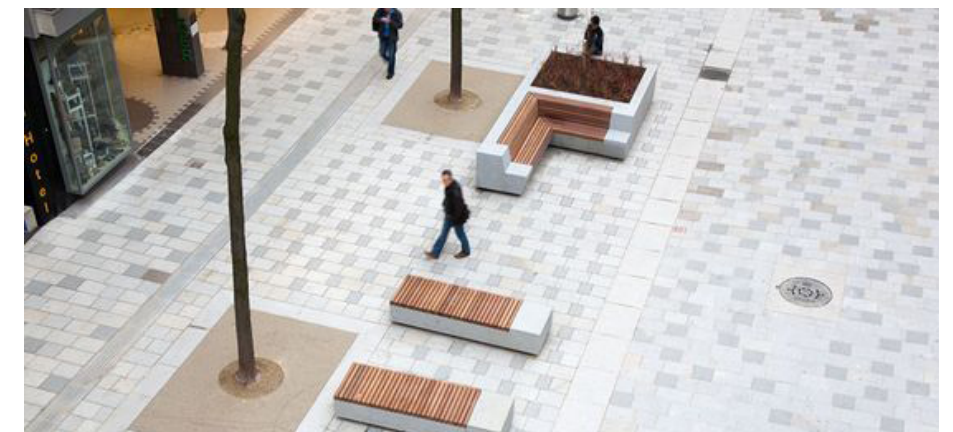
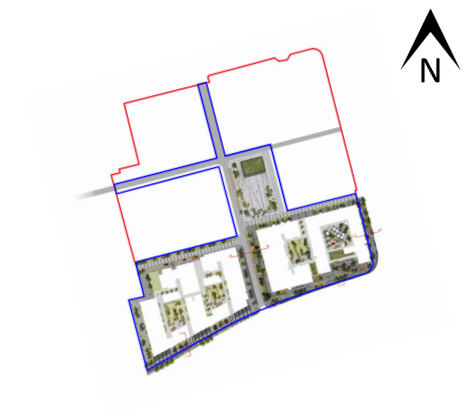
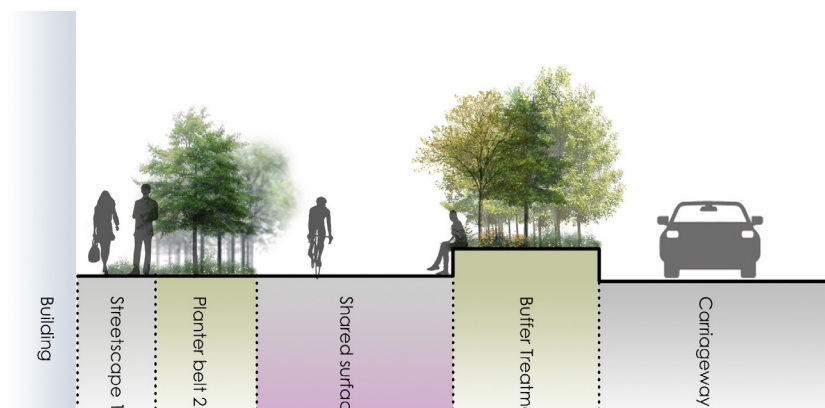




Section 1-1
Belgard Square North (Western Frontage)



Section 2-2
Belgard Square North (Eastern Frontage)



2.2 Amenity Maintenance & Lifecycle

5.1.2. Tenant amenity areas

| | |
|----------------------|--|
| Location | Gym area |
| Description | Selected timber flooring with selected underlay, weights area to receive selected raised designated zone, where the flooring can be built-up locally to accommodate this use and reduce potential impact sound with selected rubber matting or similar approved. |
| Lifecycle | Timber flooring with selected underlay has an expected life expectancy of 10-15 years dependent on use. A gym would be a high-use area which can significantly shorten timber floor lifespan. |
| Required maintenance | Sweep clean regularly ensuring to remove any dirt. Clean up spills immediately and use only recommended floor cleaners. |
| Year | Quarterly |
| Priority | Medium |
| Selection process | Appropriate use of timber floors, specifically in gym areas controls acoustic impact |
| Reference | N/A |

| | |
|----------------------|---|
| Location | Club lounge |
| Description | Selected parquet timber flooring with selected underlay. |
| Lifecycle | Parquet timber flooring with selected underlay has an expected life expectancy of 25-35 years dependent on use. |
| Required maintenance | Sweep clean regularly ensuring to remove any dirt. Clean up spills immediately and use only recommended floor cleaners. |
| Year | Quarterly |
| Priority | Medium |
| Selection process | Parquet flooring for club lounge |
| Reference | N/A |

| | |
|----------------------|---|
| Location | Meeting & media room |
| Description | Selected carpet finish on underlay. |
| Lifecycle | Selected carpet finish on underlay, with gradus-approved nosings or similar approved. |
| Required maintenance | 13-year lifespan for carpet. Likely requirement to replace for modernisation within this period also. |
| Year | Visual inspection with regular cleaning |
| Priority | Quarterly inspection and cleaning as necessary |
| Selection process | Low |
| Reference | Using carpet allows flexibility to alter and change as fashions alter and change providing enhanced flexibility |
| | N/A |

| | |
|----------------------|--|
| Location | All other areas |
| Description | Selected anti-slip ceramic floor tile, slip rating R9/10 — A+B. |
| Lifecycle | Lifespan expectation of 20-25 years in heavy wear areas, likely requirement to replace for modernisation within this period also |
| Required maintenance | Visual inspection, intermittent replacement of chipped / loose tiles |
| Year | Annual |
| Priority | Low |
| Selection process | Slip rating required at entrance lobby, few materials provide this and are as hard wearing |
| Reference | N/A |

| | |
|----------------------|--|
| Location | All wet areas |
| Description | Selected anti-slip ceramic floor tile, slip rating R10/11 — A+B. |
| Lifecycle | Lifespan expectation of 20-25 years in heavy wear areas, likely requirement to replace for modernisation within this period also |
| Required maintenance | Visual inspection, intermittent replacement of chipped / loose tiles |
| Year | Annual |
| Priority | Low |
| Selection process | Slip rating required at entrance lobby, few materials provide this and are as hard wearing |
| Reference | N/A |

5.1.3. Student accommodation

| | |
|----------------------|--|
| Location | Public areas |
| Description | <ul style="list-style-type: none"> Selected anti-slip porcelain or ceramic floor tile, slip rating R10 – A+B. Provide for inset matwell |
| Lifecycle | Lifespan expectation of 20-25 years in heavy wear areas, likely requirement to replace for modernisation within this period also |
| Required maintenance | Visual inspection, intermittent replacement of chipped / loose tiles |
| Year | Annual |
| Priority | Low |
| Selection process | Slip rating required at entrance lobby, few materials provide this and are as hard wearing |
| Reference | N/A |

| | |
|----------------------|---|
| Location | Stairs |
| Description | Selected carpet finish on underlay, with gradus approved nosings or similar approved. |
| Lifecycle | 13-year lifespan for carpet. Likely requirement to replace for modernisation within this period also. |
| Required maintenance | Visual inspection with regular cleaning |
| Year | Quarterly inspection and cleaning as necessary |
| Priority | Low |
| Selection process | Using carpet allows flexibility to alter and change as fashions alter and change providing enhanced flexibility |
| Reference | N/A |

| | |
|----------------------|--|
| Location | Lifts |
| Description | Tiles to match adjacent apartment lobbies |
| Lifecycle | Lifespan expectation of 20-25 years in heavy wear areas for the tiling |
| Required maintenance | Visual inspection, intermittent replacement of chipped / loose tiles |
| Year | Annual |
| Priority | Low |
| Selection process | Slip rating required for lifts, few materials provide this and are as hard wearing |
| Reference | N/A |

5.2. Walls

5.2.1. Common areas – apartment stair cores & entrances

| | |
|----------------------|--|
| Location | Ground floor entrance lobby |
| Description | Selected contract vinyl wall paper feature |
| Lifecycle | Lifecycle 2-10 years |
| Required maintenance | Regular maintenance required, damp cloth to remove stains and replacement when damaged |
| Year | Bi-annually |
| Priority | Low |
| Selection process | Used as feature in common areas against paint |
| Reference | N/A |

| | |
|----------------------|--|
| Location | Lift core and apartment lobbies |
| Description | Selected contract vinyl wallpaper, class O rated |
| Lifecycle | Lifecycle 2-10 years |
| Required maintenance | Regular maintenance required, damp cloth to remove stains and replacement when damaged |
| Year | Bi-annually |
| Priority | Low |
| Selection process | Used as feature in common areas against paint |
| Reference | N/A |

5.2.2. Tenant amenity areas & student accommodation

| | |
|----------------------|---|
| Location | Changing areas & Toilets |
| Description | Selected ceramic wall tile to plasterboard (moisture board to wet areas) |
| Lifecycle | Typical life expectancy of 37 years, less in wet room areas to 20-25 years |
| Required maintenance | Bi-annual inspection to review damage, local repairs as necessary, particular detailed inspection in wet room areas |
| Year | Annually |
| Priority | Medium |
| Selection process | Wet room application requires moisture board and tiling |
| Reference | N/A |

| | |
|----------------------|--|
| Location | Club lounge |
| Description | Selected wallpaper and selected paint finish with primer to skimmed plasterboard |
| Lifecycle | 2-10 years for finishes; 39 years for plasterboard |
| Required maintenance | Regular maintenance required, damp cloth to remove stains and replacement when damaged |

2.2 Access

1 Project Description

Atlas GP Limited intend to apply for a 10-year Planning Permission for development at Belgard Gardens, Belgard Square North, Tallaght, Dublin 24 all on a site measuring c. 7.3ha.

The development will consist of the demolition of all existing buildings on the site ranging from one to three storeys in height and the removal of hardstanding throughout. Proposed buildings for demolition include 2 – 3 storey Belgard Square (c.11362 sqm) and associated single storey security hut (c.9 sqm); 3 storey Belgard House (c.9706 sqm) and associated single storey security hut (c.14 sqm); 2 storey former Uniphar factory (c.7780 sqm), associated 2 storey office building (c.1033 sqm) and associated single storey security hut (c.14 sqm).

The proposed development will consist of:

- 5 no. blocks ranging from 4 – 10 storeys comprising a new urban quarter and streets to provide 436 no. apartment units consisting of 156 no. 1 beds, 230 no. 2 beds and 51 no. 3 beds (total apartment units include 8 no. live/work units with a total c.508 sqm work areas at ground floor);
- 726.8sqm of tenant/resident service amenities;
- Balconies / terraces to be provided on all elevations at all levels for each block;
- 403 no. bedspace student accommodation scheme and associated student amenity and staff facilities (540.3sqm);
- Childcare facility (c.384.2 sqm) and external playing area (209sqm);
- 6 no. retail/commercial units (c.632 sqm in total);
- Security room (c.52 sqm);
- 107 no. car parking spaces below podium;
- 20 no. car parking spaces at surface level;
- 1227 no. bicycle parking spaces below podium and at surface level;
- 4 no. semi-private courtyards of 5535sqm;
- Civic plaza (2530 sqm);
- Public realm & landscaping c.4429sqm).

The proposed development will include the provision of a new north – south street bisecting the site (to later connect to the planned Airtown Road Extension), a pedestrian connection east to Belgard Road with vehicular access (no vehicular connection to Belgard Road), a shared surface street west (to later connect to lands in ownership of SDCC if required) and a pedestrian and vehicular street to the north west to connect to the permitted Cookstown Extension Road. Works to public roads to include upgraded junction to Belgard Square North and Belgard Square and pedestrian crossing at Belgard Road. The proposed development will also include boundary treatments, green roofs, solar panels, EBS substations and switch rooms, CHP plant, waste facilities and all ancillary works and services necessary to facilitate construction and operation. The proposed development will also include provision of site boundary protection where required to facilitate development phasing.

2 Application of Part M of the Second Schedule of the Building Regulations for the Proposed Works – Apartments

The proposed mixed-use development and new apartments must meet the requirements of Part M of the Building Regulations. Part M 2010¹ came into operation on the 1st January 2012 and the requirements of Part M 2010 must be followed subject to certain Transitional arrangements. The requirements of Part M 2010 are as follows:

| | | |
|-------------------------|----|--|
| Access and Use | M1 | Adequate provision shall be made for people to access and use a building, its facilities and its environs. |
| Application of the Part | M2 | Adequate provision shall be made for people to approach and access an extension to a building. |
| | M3 | If sanitary facilities are provided in a building that is to be extended, adequate sanitary facilities shall be provided for people within the extension. |
| | M4 | Part M does not apply to works in connection with extensions to and material alterations of existing dwellings, provided that such works do not create a new dwelling. |

Figure 1 The requirements of Part M (2010) of the Building Regulations

The Design Team recognises that since the introduction of the Disability Act in 2005 Irish Building Regulations (See Figure 1 above) have been revised with Universal Design in mind and a more comprehensive technical guidance document is now in place. This document is known as the Building Regulations 2010 Technical Guidance Document M - Access and Use’ or alternatively TGD M 2010.

TGD M 2010 provides guidance in relation to meeting the requirements of Part M of the Second Schedule to the Regulations and focuses on Access and Use. It is important to note that the introduction of TGD M 2010 states:

“The materials, methods of construction, standards and other specifications (including technical specifications) which are referred to in this document are those which are likely to be suitable for the purposes of the Regulations. Where works are carried out in accordance with the guidance in this document, this will, prima facie, indicate compliance with Part M of the Second Schedule to the Building Regulations (as amended). However, the adoption of an approach other than that outlined in the guidance is not precluded provided that the relevant requirements of the Regulations are complied with. Those involved in the design and construction of a building may be required by the relevant building control authority to provide such evidence as is necessary to establish that the requirements of the Building Regulations are being complied with”.

The Design Team notes that TGD M 2010 is the minimum guidance to show compliance with the requirements of the Part M of the Building Regulations. The Design Team is also firmly committed to achieving universal access in the building and are committed to ensuring that:

All people regardless of ability can approach and gain independent easy access to the proposed works (e.g. sloped access routes; level access routes, stepped access routes, common area entrances into the apartments, retail units and student accommodation).



People can circulate within the building and use the facilities (e.g. Lifts; Part M compliant stairwells; door design and surface finishes in common areas).



People can access the main facilities provided within the development (e.g. accessible WCs, Residential Lounges, Community and Residential Amenities).



People can access each entrance to the apartments and all entrances to apartments are designed in accordance with section 3.2 of TGD M 2010. People also have access to the main habitable rooms at entry level to each of the apartment units.



A visitable WC is provided at entry level within each of the apartments and this has been designed in accordance with section 3.4 of TGD M2010.

O'Herlihy Access Consultancy have been liaising with the design team throughout the planning stages of this project and are satisfied that the proposed works will meet the requirements of Part M of the Second Schedule of the Building Regulations.

3 References/Bibliography

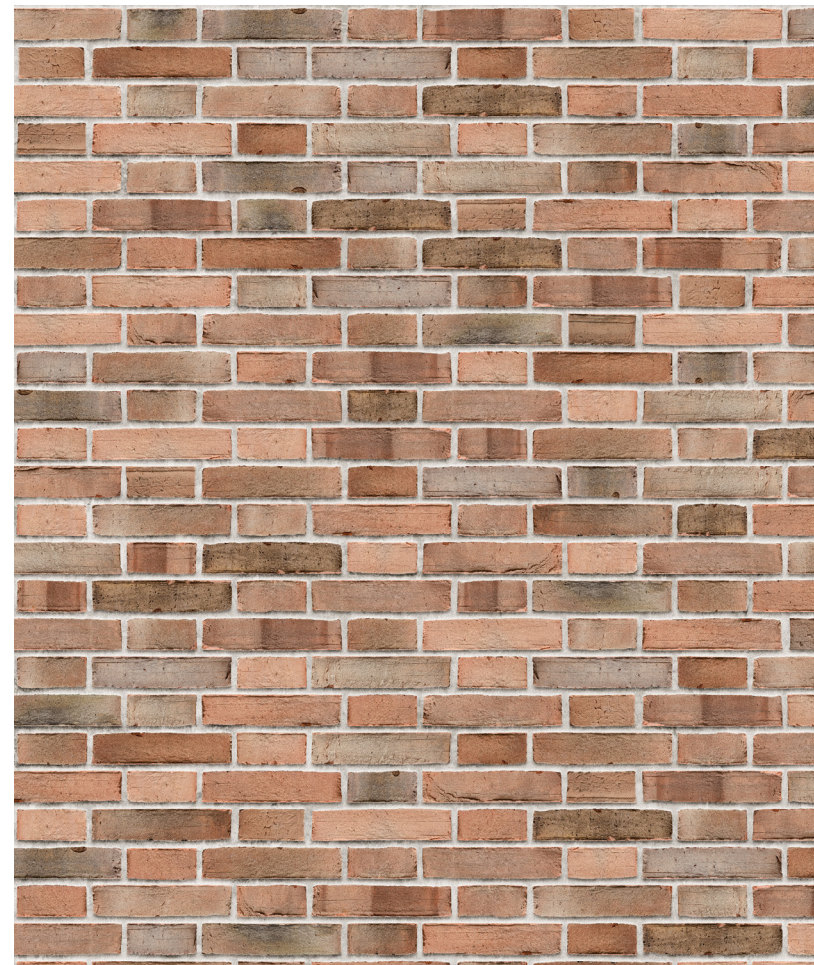
1. DEHLG (2010) Building Regulation, 2010 Technical Guidance Document M. Disability Access. Department of Environment, Heritage and Local Government, Dublin.
2. BSI (2009), BS 8300: The design of buildings and their approaches to meet the needs of disabled people - Code of practice
3. NDA (2002), Building for Everyone. The National Disability Authority, Dublin.

MATERIAL PALLETTE-

QUALITY, DURABILITY, BEAUTY



- Light Textured Brick (A1)



- Dark Red Textured Brick (A2)



- Black Textured Brick (A3)

Using tonally varied and textured bricks ensures the facades age gracefully and beautifully over time, only improving aesthetically like the traditional Dublin stock brick we see across the city.



- White precast concrete

Besides their energy efficiency and aesthetic versatility, pre-cast concrete also provides excellent noise attenuation, outstanding durability (resistant to rot, mold, etc.), and rapid construction.



- Brushed powder coated Aluminium

Powder coatings can produce much thicker coatings than conventional liquid coatings without running or sagging. Powder coated items generally have fewer appearance differences between horizontally coated surfaces and vertically coated surfaces than liquid coated items.



- Acrylic Render

As this render is coloured it does not require painting after application and the through colour finish ensures the colour will be maintained even if the render chips or gets damaged over time.

MATERIAL CONNECTIONS & DETAILS



Collonade covered ground floor with aluminium side panel running vertically with horizontal flashing to minimise staining and water flow along facade.



Precast capping with overhang to minimise staining and water flow along facade, and protect brick from water ingress and weathering.



Prefabricated balcony 'bucket', to ensure design quality and consistency through scheme.



Horizontal precast capping with overhang minimising water flow down facade flashed with aluminium window to avoid staining from birds ect...

FACADE ARTICULATION & DESIGN

Previous Design



Ammended Design



- Tonal change in brick between volumes
- Metal panel screening front balconies
- Frame wrapping around corner



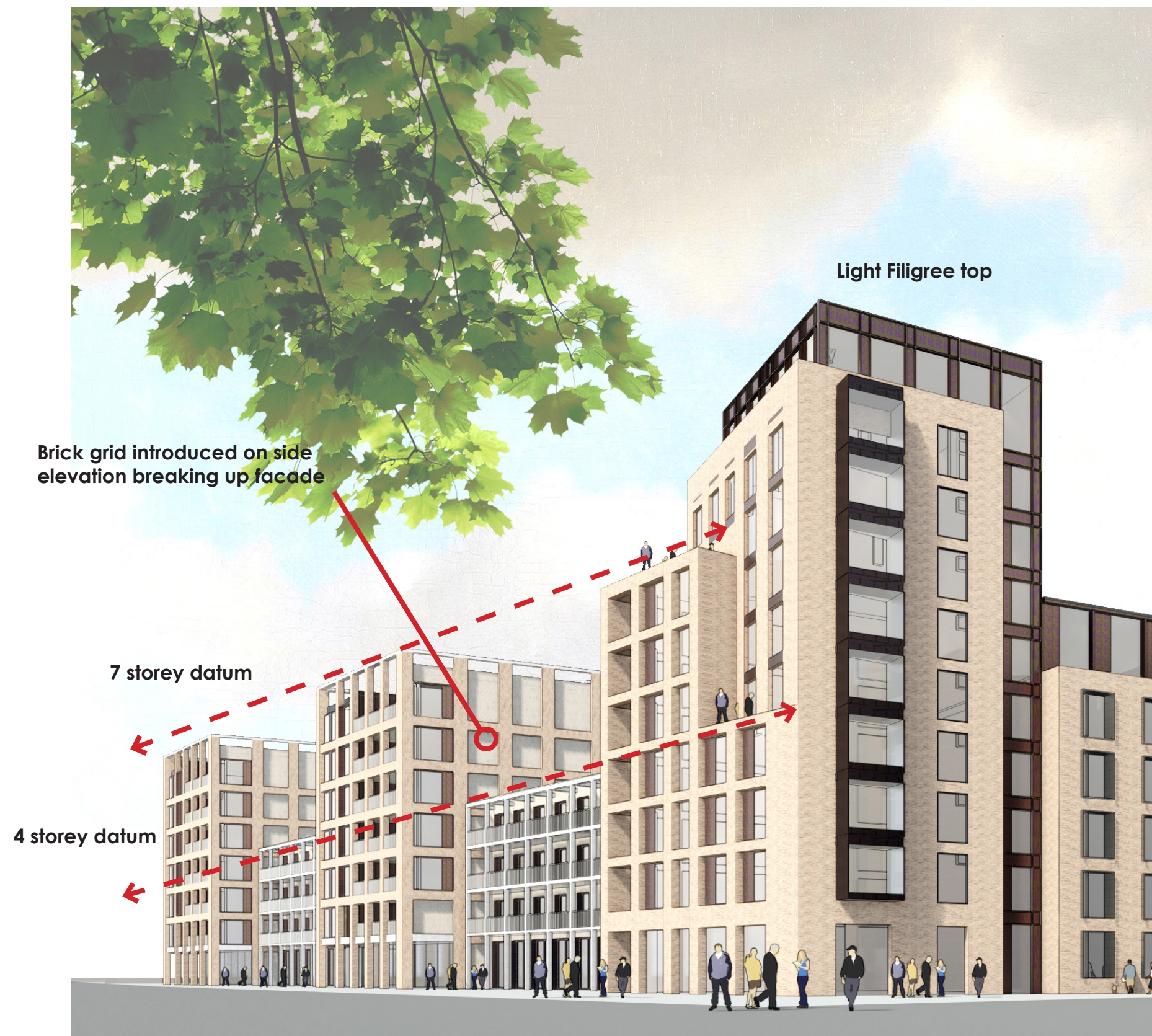
FACADE ARTICULATION & DESIGN



Previous Design



Ammended Design



- Stepping terraces relating to immediate context
- Light filigree structure on top level
- Inset and winter garden balconies
- More scultural form with individual identity contributing to placemaking



Bolles+Wilson

FACADE ARTICULATION & DESIGN

Previous Design



Ammended Design

Material change on
upper floors



- 6 Storey datum with 9 storey landmark corner articulated in render on upper floors

FULL STREET ELEVATION - MATERIAL/DETAIL/DESIGN

Previous Design



Ammended Design







DUBLIN

Address: The Chapel, Mount St Annes,
Milltown, Dublin 6, Ireland.

Phone: +353 (1) 202 7400

Fax: +353 (1) 283 0822

Email: info@omparchitects.com

CORK

Address: 26 - 27 South Mall,
Cork City, Co. Cork, Ireland.

Phone: +353 (21) 427 2775

Fax: +353 (21) 4272 766

Email: info@omparchitects.com