

Appendix 3-8

Construction Traffic Management Plan



CROWN SQUARE
DEVELOPMENTS LIMITED

JJ Rhatigan
Building Contractors

Crown Square Development Traffic Management Plan

February 2019



Contents

1.0 Introduction	- 3 -
1.1 Purpose of Traffic Management Plan.....	- 3 -
1.2 Objectives.....	- 3 -
2.0 Construction Traffic Access to Site Location	- 4 -
2.1 Location of Site & Constraints	- 4 -
2.2 Impact on Local Traffic.....	- 5 -
2.3 Prevention of Congestion of Access & Egress Routes to/from Site.....	- 5 -
2.4 Site Deliveries & Parking.....	- 6 -
2.4.1 Deliveries to the Crown Square Development.....	- 6 -
2.4.2 Project Traffic Management Signs.....	- 7 -
2.4.3 Traffic Management Within Site Boundary	- 7 -
2.4.4 Construction Parking.....	- 7 -
3.0 Maintaining Roads & Footpath Access in Locality	- 7 -
3.1 Footpaths	- 7 -
3.2 Emergency Services Access.....	- 8 -
3.3 Communication of the Traffic Management Plan.....	- 8 -
3.4 Monitoring & Corrective Actions:.....	- 8 -
APPENDIX A) TMP Layout (Inclusive of Site Entrance No.3 For Subsequent Phases).....	- 9 -

1.0 INTRODUCTION

1.1 Purpose of Traffic Management Plan

This Traffic Management Plan, applies to all related traffic entering, using, and leaving the Crown Square Development for the duration of its construction.

Included in it, are plans which set out to prevent and minimise, as far as reasonably practicable, the disruption to vehicular and pedestrian traffic along all routes in the vicinity of the proposed development, with particular emphasis on managing construction traffic, during peak travel periods.

1.2 Objectives

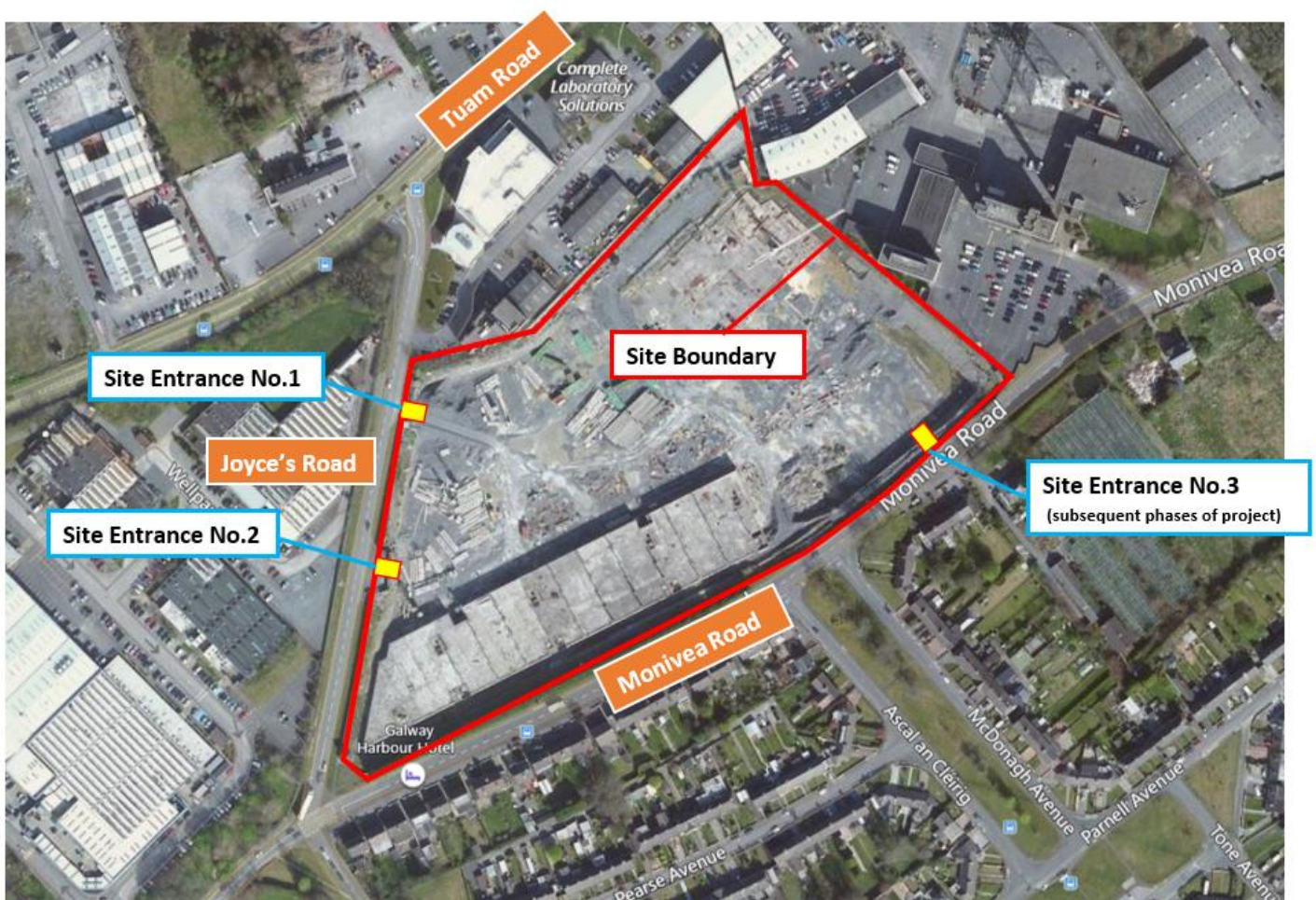
This Traffic Management Plan sets out to control the movement of traffic, both public & site related during the construction of the proposed development, and also to safely co-ordinate the delivery and loading / off-loading of materials and products. In particular the objectives of the Contractor shall include:

- To facilitate the construction of the Crown Square Development for the duration of the project, during a number of phases, and in minimising the impacts on the general public of construction related traffic.
- Cater for all modes of traffic along the local routes and adjoining junctions, including public transport flows, disabled persons, and to warn pedestrians both public & site related, of any hazards that may exist.
- Include safety measures to provide for safe traffic flows for users and the general workforce including the measures to control all site vehicles during movement, reversing and turning so that no injury or damage to persons, vehicles, or materials may occur.
- Facilitate the needs of stakeholders including local authority & Gardaí, with responsibilities for roads and traffic in the area.
- Ensure safe access and egress for all construction personnel and visitors and ensure safe passage for pedestrians at all site gateways.
- Minimise as much as possible, the journey time delays to motorists and other road users, and provide a safe traffic route for all.
- During the construction stage the Traffic Management Plan will be managed by the Contractor, who will ensure continuous distribution, and updating of information to all those affected by the plan.
- During construction works the Contractor shall ensure that appropriate resources are in place for the implementation of this Traffic Management Plan.

2.0 CONSTRUCTION TRAFFIC ACCESS TO SITE LOCATION

2.1 Location of Site & Constraints

The proposed Crown Square Development site is located in Galway City, in the Mervue area, along Joyce's Road. The site will be accessed via Joyce's Road, and subsequently during future phases of the project, will be accessed via an entrance along the Monivea Road. The approach roads to the site will be signposted for the information of construction related traffic and the public. The Contractor shall request that all construction related traffic use the specified access routes to the site for the duration of the project. These routes may vary over the course of the full development, and all construction related traffic will be updated in advance of any variations or changes to the access/egress routes. The proposed development is located in an area of Galway that can experience increased volumes of traffic at certain times and in particular areas. The Contractor shall ensure that the highlighted constraints are dealt with within this Traffic Management Plan.



2.2 Impact on Local Traffic

There was in excess of 1200 construction vehicle/lorry movements per day at the Crown site during peak construction works that were carried out in 2008. The main factor contributing to this volume of traffic was the bulk excavation works which were completed at that time. As the excavation works are now complete and all excess materials have been removed from the site, we estimate that the maximum number of construction vehicle / lorry movements per day for the current scheme will be in the region of 200. This is less than 20% of the volume of construction traffic that was accommodated at the site in 2008.

There are a number of businesses located in close proximity to the proposed development. Therefore, the impact of construction traffic on local roads may be seen in some regard at various times during the project. The Contractor must continually monitor the impact of construction traffic on the local roads in order to prevent any impact on local businesses. This shall be done by ensuring:

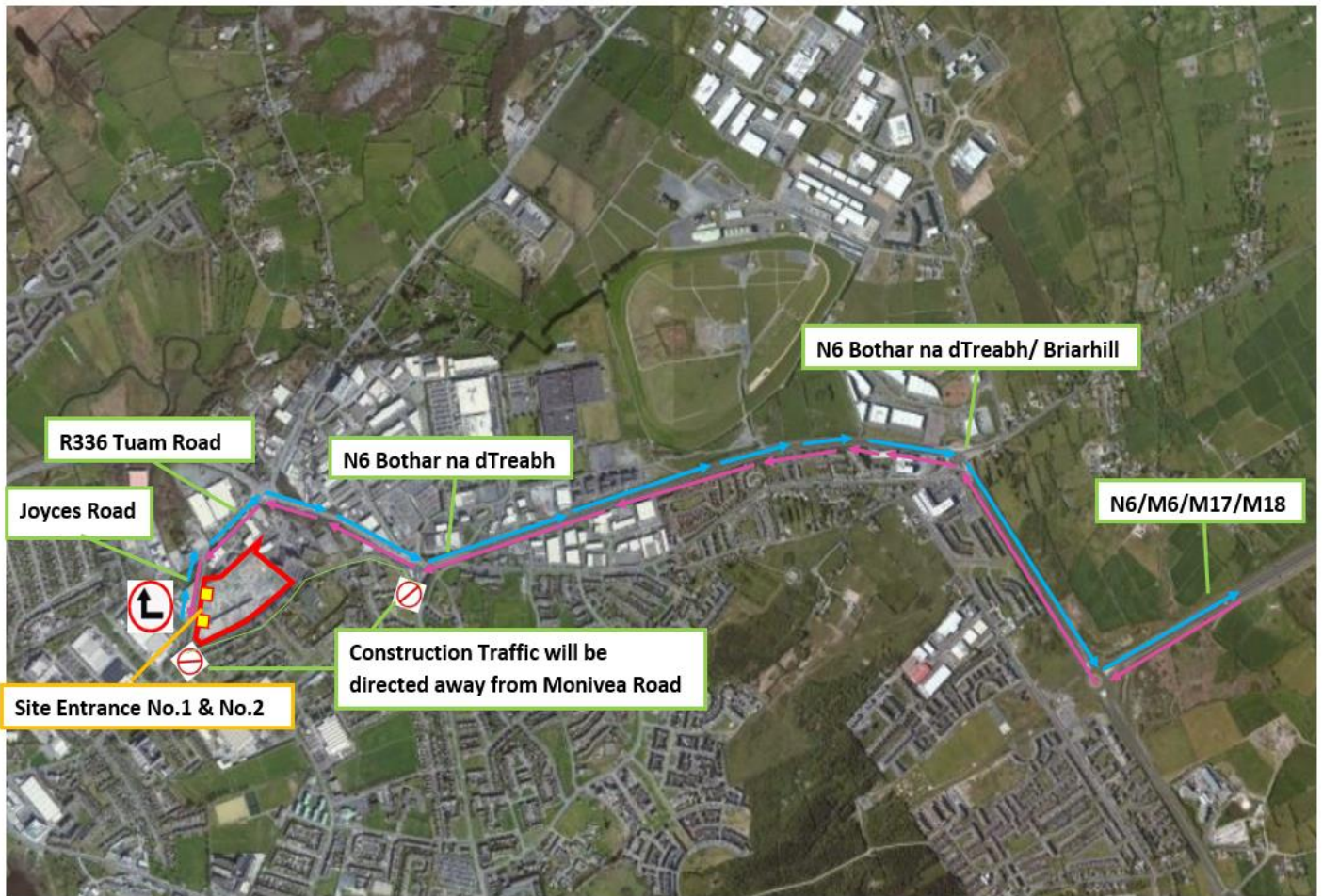
- All entry/exit points to the site will be manned by trained Gatemen to monitor, assist, and advise the construction related traffic in the area.
- Traffic management signage will be erected in advance of the proposed development along local access roads to inform both the public and construction related road users of the works and possible disruption.
- The Contractor will encourage all workers involved in the construction of the proposed development, to utilise the public transport infrastructure that is readily available to them. This shall contribute to a reduction on construction related vehicles on the roads.
- The Contractor shall provide a number of bicycle stands and showering facilities on site, to encourage to use of bicycles by those involved in the project.

2.3 Prevention of Congestion of Access & Egress Routes to/from Site

The management of Crown Square Development construction traffic on the public road network around the local area is an important part of the overall project, and must be actively managed by the Contractor to the satisfaction of Galway City Council.

To combat any negative impact on local traffic and traffic in the surrounding areas of the city, the Contractor shall instruct and direct construction related traffic to use one route in/out of the city, which utilises the main transport infrastructure in Galway and the surrounding counties. The M6 motorway shall be used as the main access route to the site from outside of the city. The M6 merges construction related traffic that may be coming from M17 and M18 and will filter this traffic through to the N6 until the Tuam Road is met. From here, the construction related traffic which needs to access the site (mainly deliveries) will turn left and head towards the city and take another immediate left onto Joyce's Road where the site entrances are located.

The construction related traffic the will be leaving site will be directed to leave via the same route onto the Tuam Road, N6, and then M6. From the Joyce's Road entrances, construction traffic must turn RIGHT when leaving site. The Monivea Road can be very congested at certain times and due to this, the Contractor shall instruct all construction traffic to avoid this route upon arrival, and exiting the city.



2.4 Site Deliveries & Parking

Delivery vehicles refers to, and includes the following:

- HGVs & haul trucks – i.e. vehicle with 6 tyres or more as set out in the RSA publication ‘Guidelines on Maximum Weights and Dimensions of Mechanically Propelled Vehicles and Trailers, Including Manoeuvrability Criteria’
- Site machinery such as excavators, tippers, bulldozers, etc.
- Cranes
- Concrete trucks & pumps.

2.4.1 Deliveries to the Crown Square Development

Deliveries to site shall be planned and coordinated by the Contractor and corresponding subcontractors on site. Efforts shall be made to restrict the deliveries to certain times during each working day, as to minimise any possible disruption to local businesses.

The Gatemen will be aware of the delivery times and will be on standby awaiting the arrival of same. Delivery vehicles must give way to pedestrians and take note of local traffic. Loading or unloading of delivery vehicles on local roads or private premises will not be permitted. Note, the local business working times are listed below. The Contractor will so far as reasonably practicable, avoid deliveries to site 15 minutes before and after, the start and finish times specified for these local businesses.

<i>Business Name</i>	Start Time	Finishing Times
<i>Thermo King</i>	8.00	17.30
<i>Nelipak</i>	9.00	17.30

<i>Galway Tool & Mould Ltd.</i>	8.00	17.00
<i>Candor Accounting</i>	9.00	17.30
<i>Complete Lab Solutions</i>	9.00	17.00
<i>GRETB Training Centre</i>	8.00	21.00
<i>IDA Ireland</i>	9.00	17.00
<i>Togram Engineering</i>	8.00	18.00
<i>Maveric Contractors</i>	9.00	17.00

2.4.2 Project Traffic Management Signs

The entrances to the proposed development are located within a 50Km/h Zone. Traffic Management Signage shall be made from reflective orange metal with bold black writing, and will be erected on approaches from the Monivea Road, Tuam Road, and along Joyce's Road at specific intervals to the construction gateways. The signs shall alert and inform the public and site traffic of the site entrances. All the approach signs and site signage shall be erected and maintained by the Contractor, who also must regularly review the Traffic Management arrangements. Site Awareness & Public Awareness signs will be placed at each entrance to the proposed development for the information of both the public and construction operatives. The Contractor shall use a competent sign provider and all signage used will meet the requirements of the Safety, Health & Welfare at Work (General Applications) Regulations 2007 and Chapter 8 of the Traffic Signs Manual.

2.4.3 Traffic Management Within Site Boundary

The Contractor's construction traffic route within the site boundary will be set up by provision of haul roads and shall be maintained in a clean environment. Clean haul roads shall be set up from the access gates to the Material Unloading and Laydown within the footprint of the site. The haul roads will be used for deliveries to site and construction site vehicles. The Contractor shall ensure that Gatemen are located at each site entrance and shall ensure the safe passage of vehicles from the main road outside the site onto the haul road within the site boundary.

2.4.4 Construction Parking

There will be limited onsite parking provided for construction personnel in the very early stages of the project. The Contractor shall acquire adequate offsite parking for construction related vehicles during subsequent phases of the proposed development. The Contractor will monitor the construction personnel car parking to ensure the amenity, livelihood and trade of local residents and business people are not affected.

3.0 MAINTAINING ROADS & FOOTPATH ACCESS IN LOCALITY

3.1 Footpaths

All footpaths and roads surrounding the site will be kept clear of construction material and debris. Controls as discussed in '2.0 Construction Traffic Access To Site Location' will be employed to ensure the roads are maintained clean. Construction vehicles will constantly travel on high quality stoned haul roadways within the site boundary which should ensure minimum or eliminate debris gathering to vehicle wheels and undercarriage. Water hoses will be used inside site perimeter to minimize dust levels during dry weather. Temporary signage will be erected on approach to the main gate highlighting the fact that a construction entrance is ahead.

3.2 Emergency Services Access

At all times throughout the duration of the project all roads shall be maintained in a clear and safe fashion to not only provide access for construction vehicles but all emergency services vehicles. The Traffic Management Plan shall be continuously monitored and updated as necessary. As necessary, the Contractor will make the site available to the emergency service so as to undertake drills or training or just to inspect the site to ensure that emergency vehicles can gain access to the necessary areas.

3.3 Communication of the Traffic Management Plan

Communication of the Traffic Management Plan to subcontractors and delivery companies will be by post or e-mail when appointed by the Contractor. The Traffic Management Plan shall also be communicated to site workers during site induction by the Contractor. Signage will be erected to communicate to the general public.

3.4 Monitoring & Corrective Actions:

The Contractor shall monitor the compliance of delivery vehicles and construction related vehicles to ensure they adhere to the conditions laid out in the Traffic Management Plan. Any issues, observations, or non-conformances observed by the public or other, shall be dealt with immediately by the Contractor in timely and orderly fashion.

APPENDIX A) TMP LAYOUT (INCLUSIVE OF SITE ENTRANCE NO.3 FOR SUBSEQUENT PHASES)

