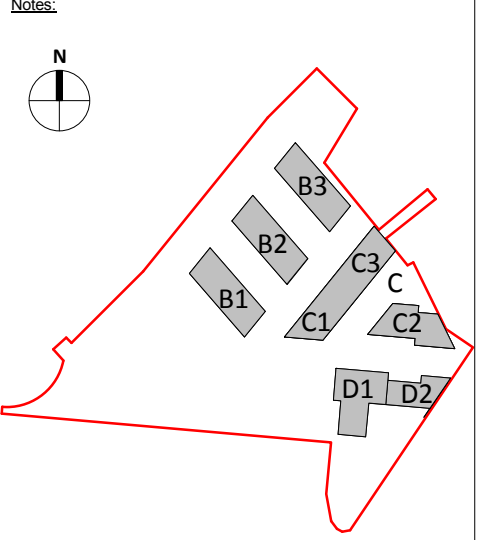
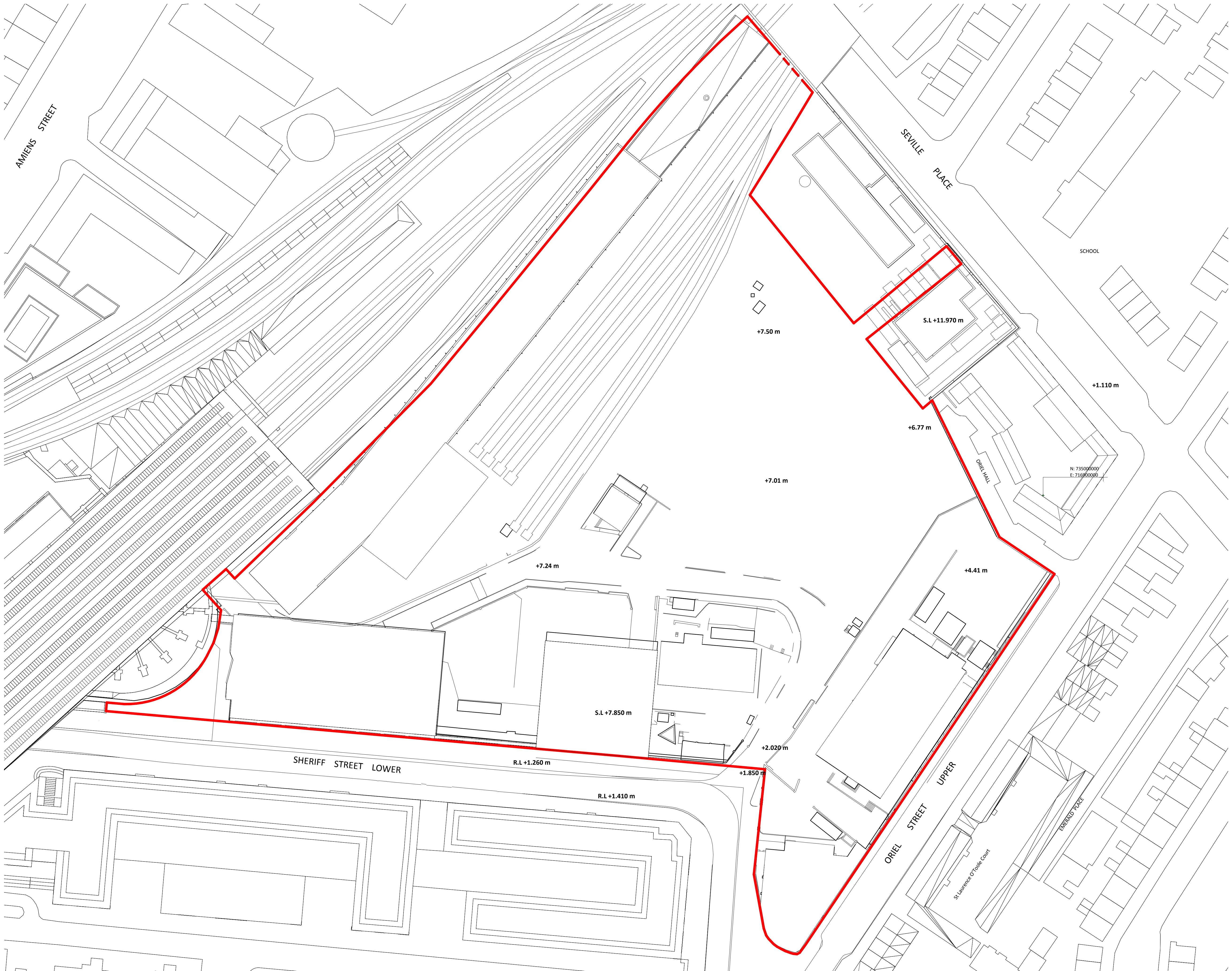


All dimensions to be checked on site. Figured dimensions take preference over scaled dimensions. Any errors or discrepancies to be reported to the Architects. This drawing may not be edited or modified by the recipient.

Copyright and ownership of this drawing is vested in RKD Architects, whose prior written consent is required for its use, reproduction or for publication to any third party. All rights reserved by the law of copyright and by international copyright conventions are reserved to RKD Architects and may be protected by court proceedings for damages and/or injunctions and costs. RKD Architects' Quality Management Systems are certified to ISO 9001:2015.



Notes:
All coordinates relate to the Irish Transverse Mercator (ITM) and are displayed in meters (m). All levels relate to Malin Head datum. All dimensions are given in millimeters (mm).



— SITE BOUNDARY

Rev.	Date	Description
A	OCT 2019	Issued for Planning Application Submission

STATUS: **PLANNING**
 PROJECT: THE CONNOLLY QUARTER
 PROJECT ADDRESS: Lands to the Rear of Connolly Station, Dublin 1
 DWG TITLE: EXISTING SITE LAYOUT PLAN
 DWG NO: 18135-RKD-00-00-DR-A-1001

REV.	PROJECT NO.	SCALE
A	18135	1 : 500

DATE: JUN 2019 DRN: CNAB CHK: CS

RKD
 58 Northumberland Rd
 Ballsbridge, Dublin 4
 D04 W9P6, Ireland

+353 1 668 1055
 info@rkd.ie
 rkd.ie

ARROW
 Name: Farinagade 13, 41 th
 DK-1364 Copenhagen K
 Denmark

+45 4226 2860
 info@arrowarchitects.com
 www.arrowarchitects.com

1 EXISTING SITE LAYOUT
1 : 500