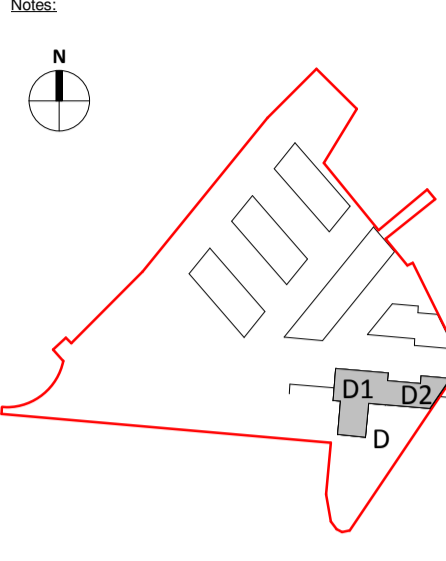


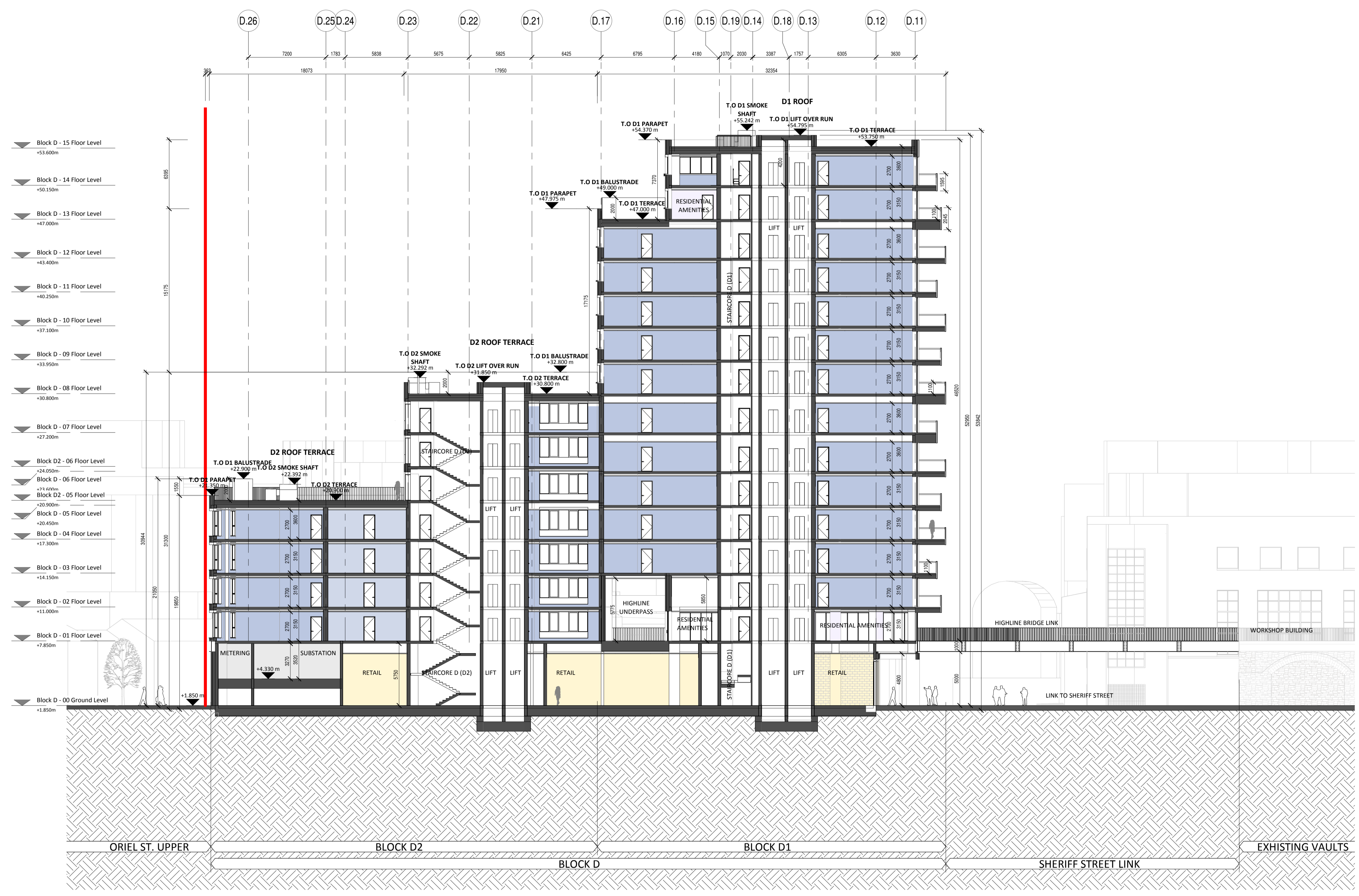
All dimensions to be checked on site. Figured dimensions take preference over scaled dimensions. Any errors or discrepancies to be reported to the Architects. The drawing may not be edited or modified by the recipient.

Copyright and ownership of this drawing is vested in RKD Architects, whose prior written consent is required for its use, reproduction or for publication to any third party. All rights reserved by the law of copyright and by international copyright conventions are reserved to RKD Architects and may be protected by court proceedings for damages and/or injunctions and costs. RKD Architects' Quality Management Systems are certified to ISO 9001:2015.



Notes:
 All levels shown are to the Irish Transverse Mercator (ITM) and are displayed in meters (m). All levels shown relate to the Malin Head datum. All dimensions shown in millimeters (mm). Symbol indicates top of floor level and relates to Malin Head datum.

USE	
[Light Blue Box]	STUDIO APARTMENT
[Medium Blue Box]	1 BED APARTMENT
[Dark Blue Box]	2 BED APARTMENT
[Blue Box]	3 BED APARTMENT
[Purple Box]	INTERNAL RESIDENTIAL AMENITIES
[Yellow Box]	RETAIL
[Green Box]	COMMUNITY
[Grey Box]	ANCILLARY USE



- Block D - 15 Floor Level +53.600m
- Block D - 14 Floor Level +50.150m
- Block D - 13 Floor Level +47.000m
- Block D - 12 Floor Level +43.400m
- Block D - 11 Floor Level +40.250m
- Block D - 10 Floor Level +37.100m
- Block D - 09 Floor Level +33.950m
- Block D - 08 Floor Level +30.800m
- Block D - 07 Floor Level +27.200m
- Block D2 - 06 Floor Level +24.050m
- Block D2 - 06 Floor Level +21.600m
- Block D2 - 05 Floor Level +20.900m
- Block D - 05 Floor Level +20.450m
- Block D - 04 Floor Level +17.300m
- Block D - 03 Floor Level +14.150m
- Block D - 02 Floor Level +11.000m
- Block D - 01 Floor Level +7.850m
- Block D - 00 Ground Level +1.850m

Oriel St. Upper BLOCK D2 BLOCK D BLOCK D1 SHERIFF STREET LINK EXISTING VAULTS

Rev.	Date	Description
A	OCT 2019	Issued for Planning Application Submission

STATUS: **PLANNING**
 PROJECT: The Connolly Quarter
 PROJECT ADDRESS: Lands to the Rear of Connolly Station, Dublin 1
 DWG TITLE: BLOCK D SECTION B-B

REV.	PROJECT NO.	SCALE
A	18135	1 : 200

RKD
 59 Northumberland Rd
 Ballsbridge, Dublin 4
 D04 W P86, Ireland

ARROW
 Nørre Fælledvej 13, 4th fl.
 DK-1364 Copenhagen K
 Denmark