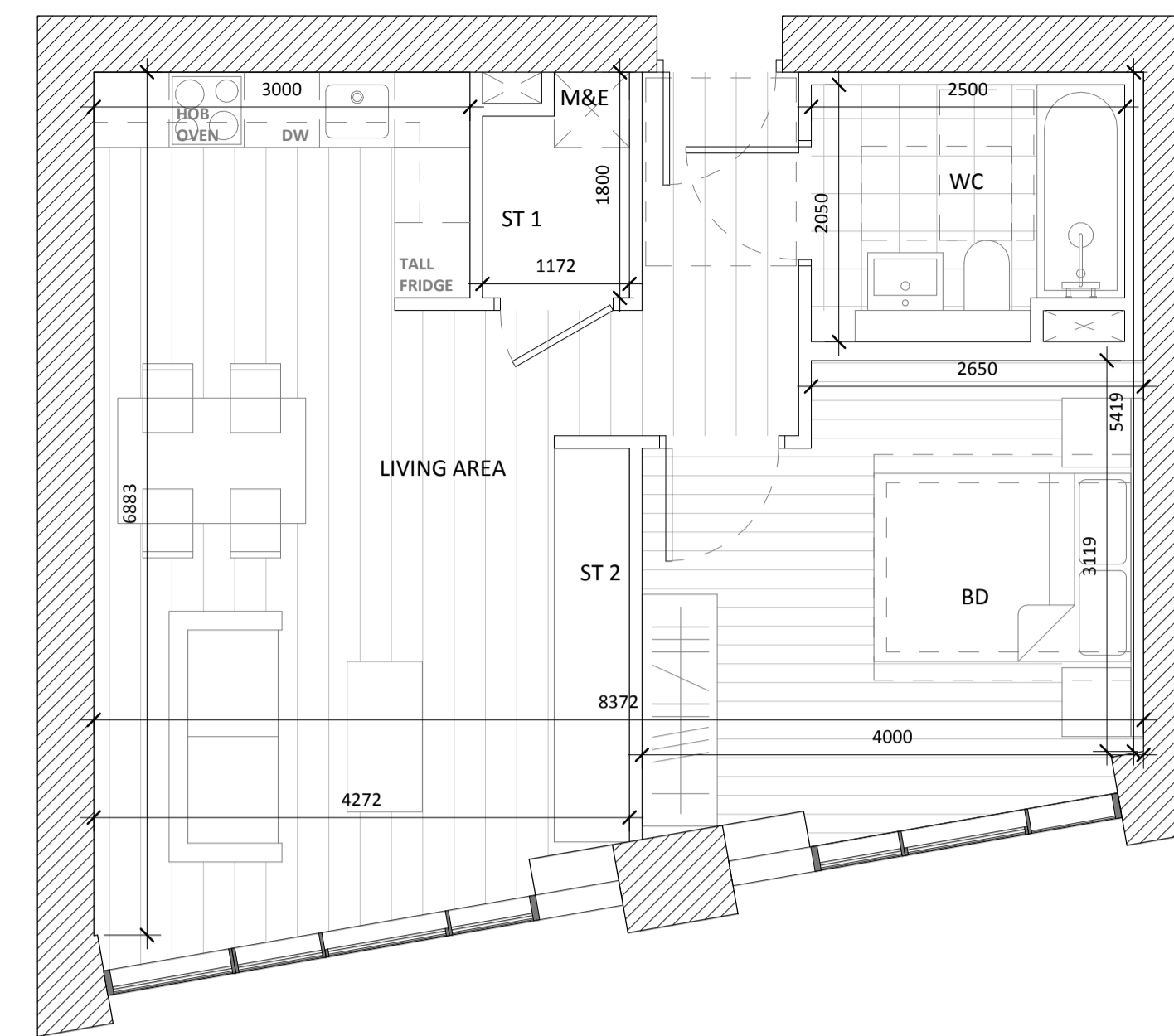
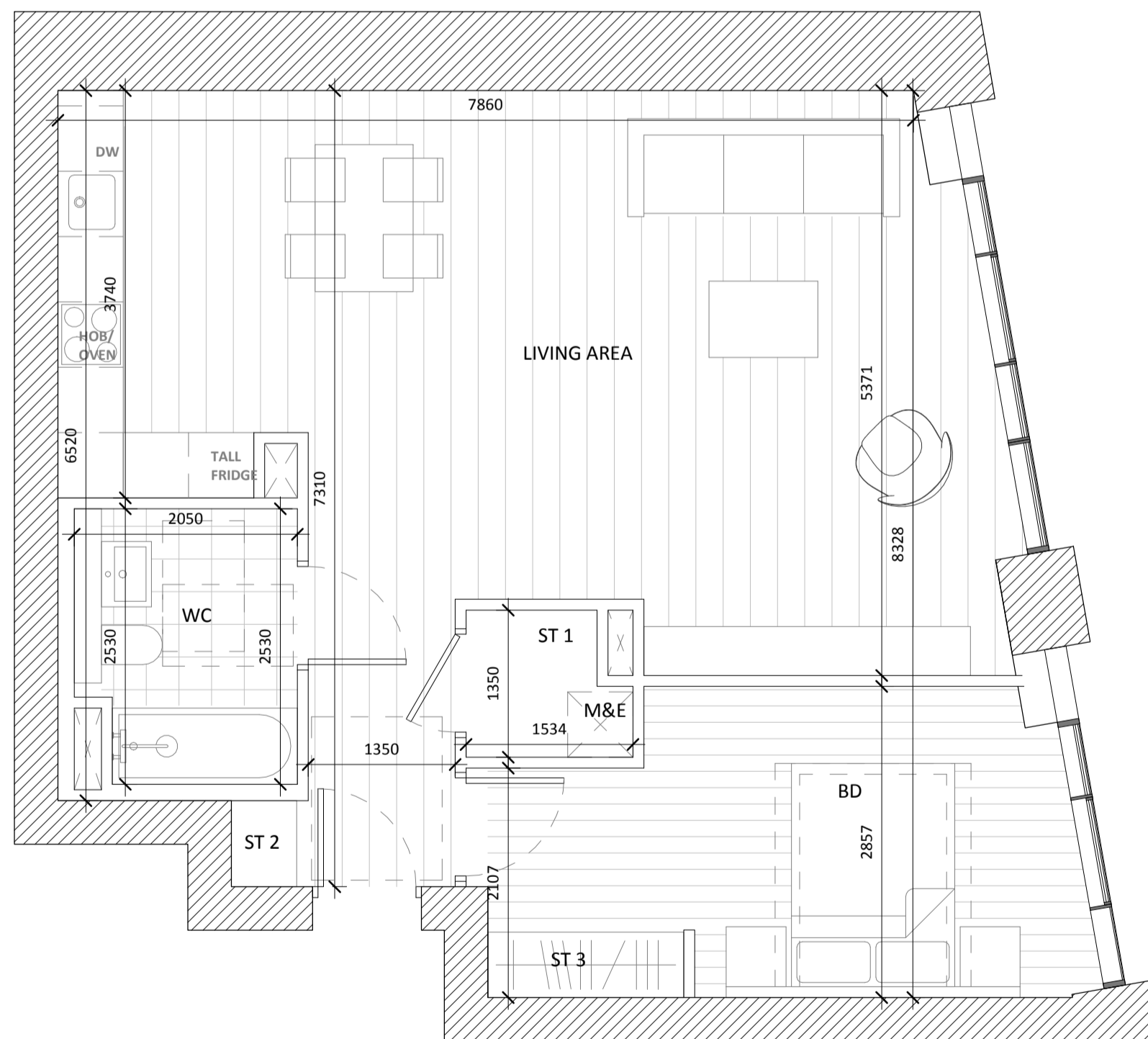


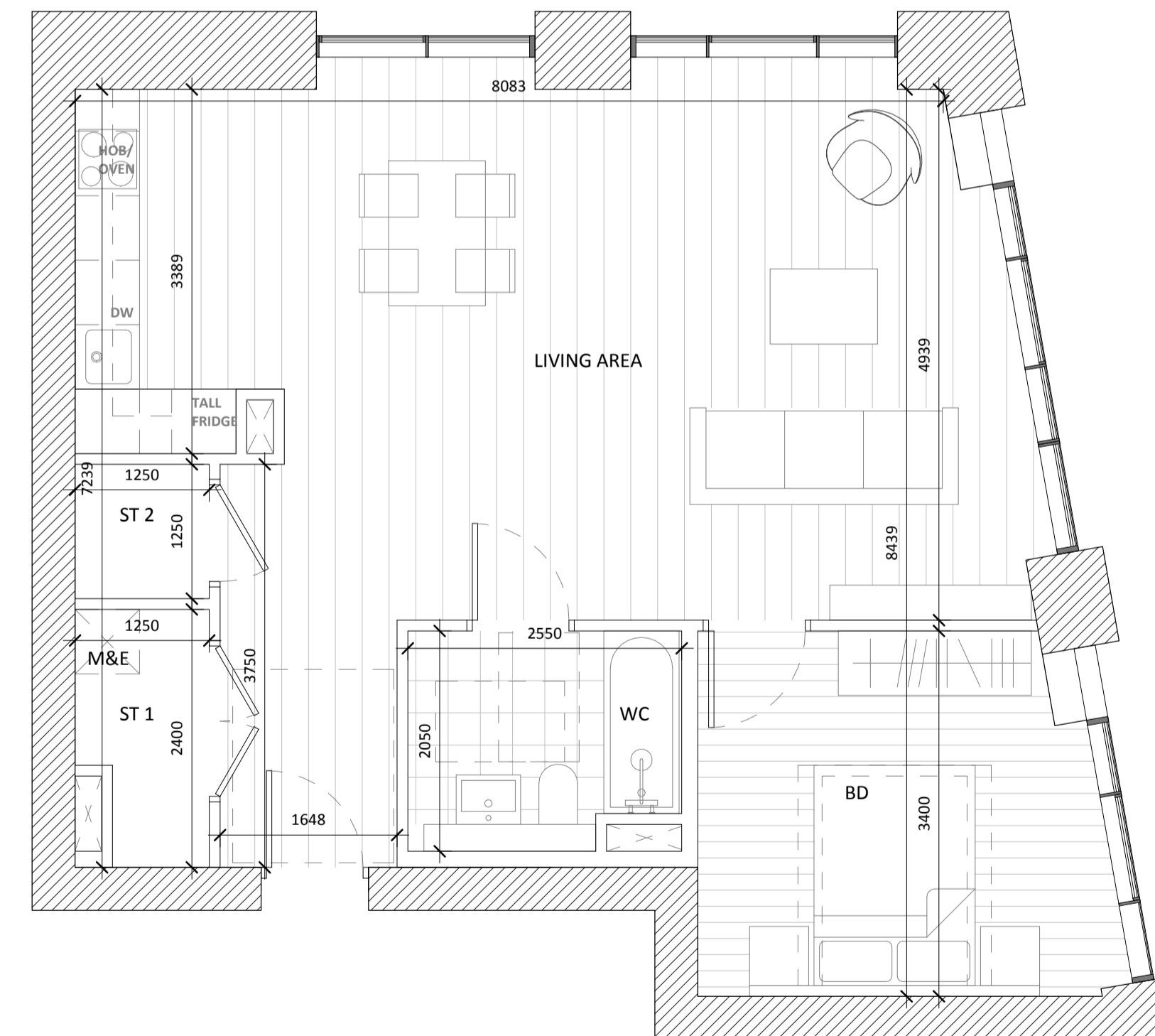
	AREA ACHIEVED (m2)	AREA REQUIRED (m2)
GROSS INTERNAL AREA	55.2	45
NET INTERNAL AREA	54.1	-
LIVING AREA	26.1	23
BEDROOM	16.2	11.4
SHOWER ROOM	3.7	-
STORAGE 1	1.5	3
STORAGE 2	0.7	
STORAGE 3	1.1	



	AREA ACHIEVED (m2)	AREA REQUIRED (m2)
GROSS INTERNAL AREA	53.3	45
NET INTERNAL AREA	52.0	-
LIVING AREA	26.0	23
BEDROOM	13.6	11.4
WC	4.9	-
STORAGE 1	1.5	3
STORAGE 2	1.8	



	AREA ACHIEVED (m2)	AREA REQUIRED (m2)
GROSS INTERNAL AREA	68.0	45
NET INTERNAL AREA	66.4	-
LIVING AREA	39.6	23
BEDROOM	14.5	11.4
WC	4.9	-
STORAGE 1	1.4	3
STORAGE 2	0.5	
STORAGE 3	1.1	



	AREA ACHIEVED (m2)	AREA REQUIRED (m2)
GROSS INTERNAL AREA	70.6	45
NET INTERNAL AREA	69.2	-
LIVING AREA	39.6	23
BEDROOM	12.9	11.4
WC	4.9	-
STORAGE 1	2.3	3
STORAGE 2	1.6	

All dimensions to be checked on site. Figured dimensions take preference over scaled dimensions. Any errors or discrepancies to be reported to the Architects. This drawing may not be edited or modified by the recipient.

**A1**

Copyright and ownership of this drawing is vested in RKD Architects, whose prior written consent is required for its use, reproduction or for publication to any third party. All rights reserved by the law of copyright and by international copyright conventions are reserved to RKD Architects and may be protected by court proceedings for damages and/or injunctions and costs. RKD Architects' Quality Management Systems are certified to ISO 9001:2015.

Notes:

Rev.	Date	Description
A	OCT 2019	Issued for Planning Application Submission

STATUS: **PLANNING**

PROJECT: THE CONNOLLY QUARTER

PROJECT ADDRESS: Lands to the Rear of Connolly Station, Dublin 1

DWG TITLE: BLOCK B - APARTMENT TYPES (2 of 4)

DWG NO: 18135-RKD-B-ZZ-DR-A-1511

REV.	PROJECT NO.	SCALE
A	18135	1 : 50

DATE: JUN 2019 DRN: AMG CHK: CS

**RKD**

58 Northumberland Rd  
Salthouse, Dublin 4  
D04 W P96, Ireland

+353 1 668 1055  
mk@rkd.ie  
rk@rkd.ie

**ARROW**

Nørre Farinvej 13, 41  
DK-1364 Copenhagen K  
Denmark

+45 4236 2860  
info@arrowarchitects.com  
www.arrowarchitects.com