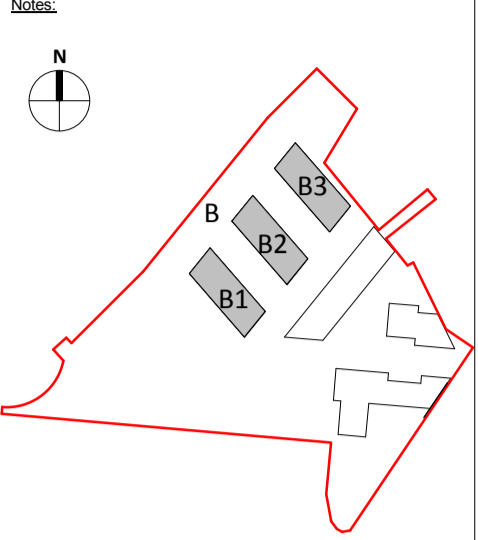
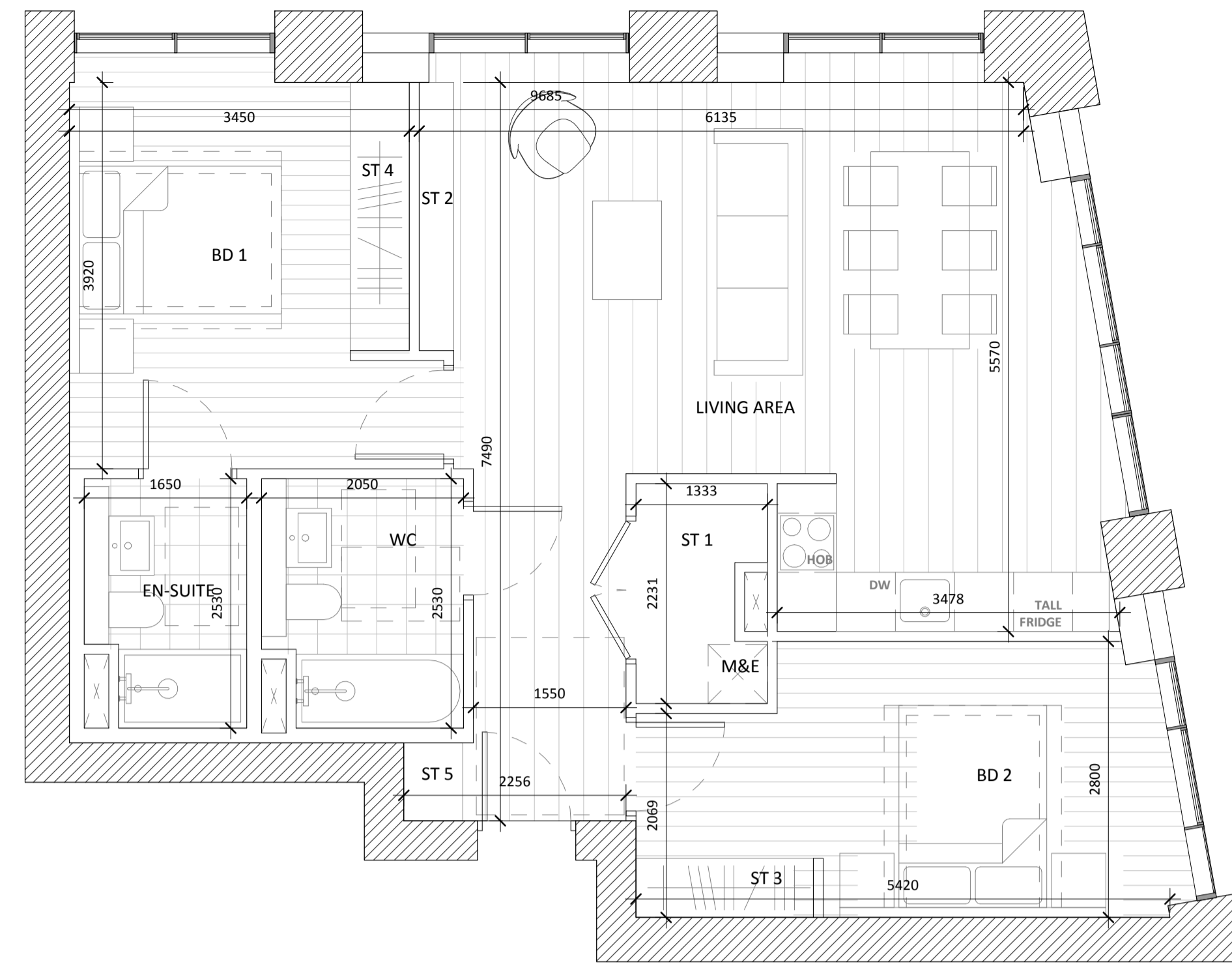


All dimensions to be checked on site. Figured dimensions take preference over scaled dimensions. Any errors or discrepancies to be reported to the Architects. This drawing may not be edited or modified by the recipient.

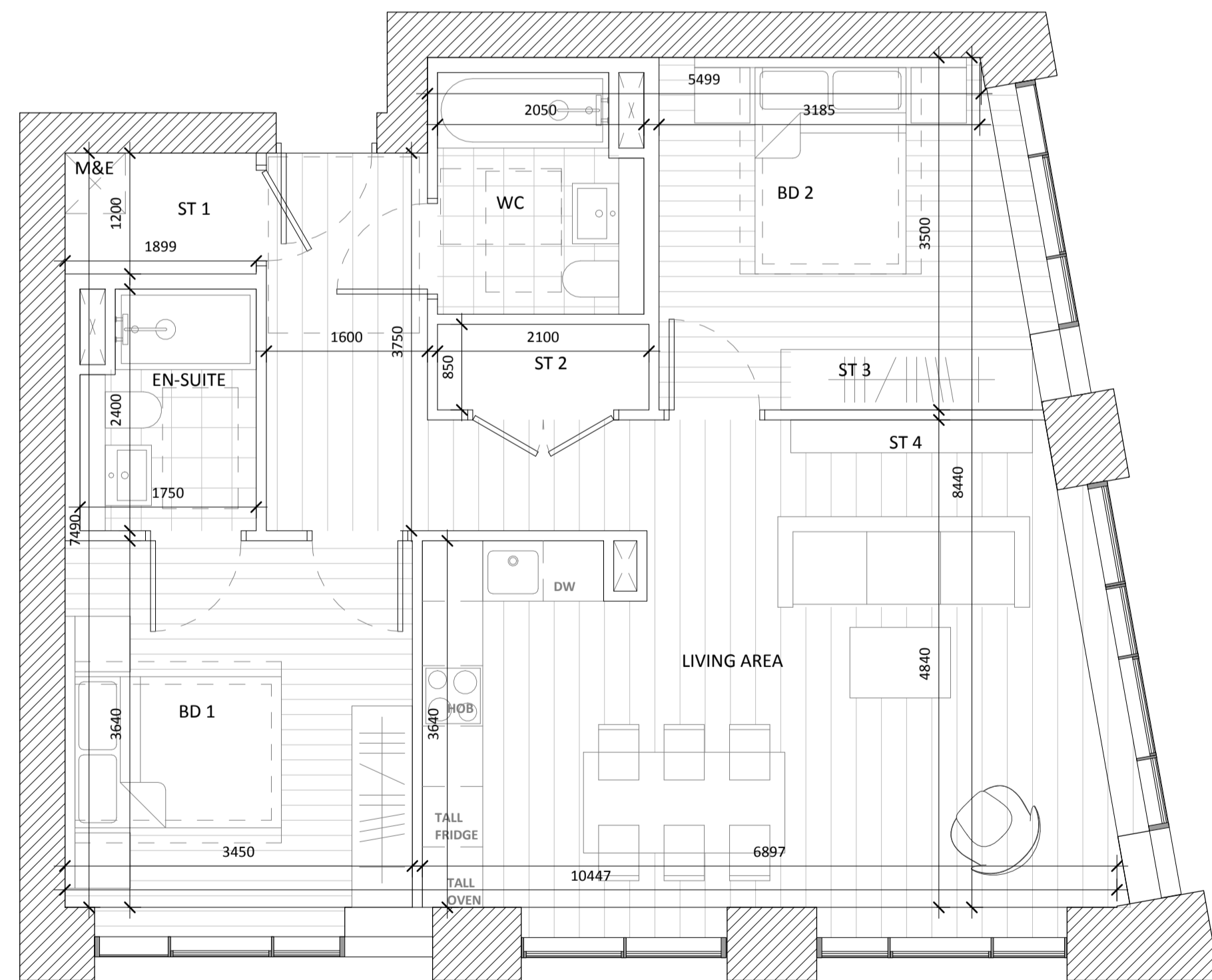
Copyright and ownership of this drawing is vested in RKD Architects, whose prior written consent is required for its use, reproduction or for publication to any third party. All rights reserved by the law of copyright and by international copyright conventions are reserved to RKD Architects and may be protected by court proceedings for damages and/or injunctions and costs. RKD Architects' Quality Management Systems are certified to ISO 9001:2015.



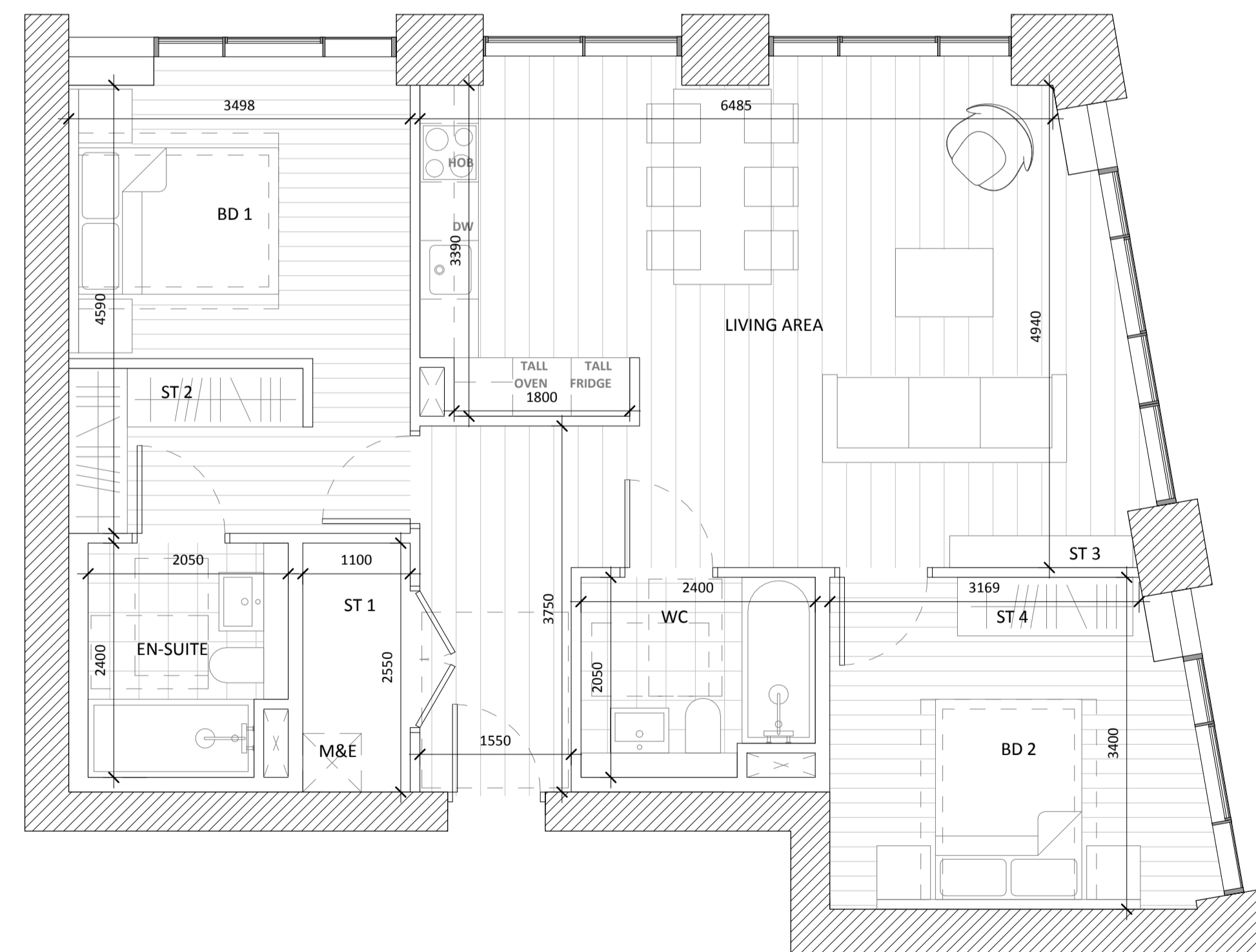
2B4P_B41					
	AREA ACHIEVED (m2)	AREA REQUIRED (m2)		AREA ACHIEVED (m2)	AREA REQUIRED (m2)
GROSS INTERNAL AREA	78.9	73	EN-SUITE	4.3	-
NET INTERNAL AREA	76.8	-	STORAGE 1	1.8	6
LIVING AREA	31.9	30	STORAGE 2	1.4	
BEDROOM 1	12.8	11.4	STORAGE 3	1.0	
BEDROOM 2	13.7	13	STORAGE 4	1.9	
WC	4.6	-			



2B4P_B42					
	AREA ACHIEVED (m2)	AREA REQUIRED (m2)		AREA ACHIEVED (m2)	AREA REQUIRED (m2)
GROSS INTERNAL AREA	84.7	73	EN-SUITE	3.9	-
NET INTERNAL AREA	82.8	-	STORAGE 1	2.3	6
LIVING AREA	31.7	30	STORAGE 2	0.9	
BEDROOM 1	12.8	11.4	STORAGE 3	1.1	
BEDROOM 2	13.1	13	STORAGE 4	1.6	
WC	4.9	-	STORAGE 5	0.5	



2B4P_B43					
	AREA ACHIEVED (m2)	AREA REQUIRED (m2)		AREA ACHIEVED (m2)	AREA REQUIRED (m2)
GROSS INTERNAL AREA	83.5	73	EN-SUITE	3.9	-
NET INTERNAL AREA	81.6	-	STORAGE 1	1.9	6
LIVING AREA	30.6	30	STORAGE 2	1.8	
BEDROOM 1	13.3	13	STORAGE 3	1.5	
BEDROOM 2	11.4	11.4	STORAGE 4	0.8	
WC	4.6	-			



2B4P_B44					
	AREA ACHIEVED (m2)	AREA REQUIRED (m2)		AREA ACHIEVED (m2)	AREA REQUIRED (m2)
GROSS INTERNAL AREA	85.8	73	EN-SUITE	4.6	-
NET INTERNAL AREA	83.6	-	STORAGE 1	2.4	6
LIVING AREA	32.3	30	STORAGE 2	2.1	
BEDROOM 1	14.3	13	STORAGE 3	0.6	
BEDROOM 2	11.6	11.4	STORAGE 4	0.9	
WC	4.6	-			

Rev.	Date	Issued for Planning Application Submission	Description
A	OCT 2019	Issued for Planning Application Submission	

STATUS: **PLANNING**  
 PROJECT: THE CONNOLLY QUARTER  
 PROJECT ADDRESS: Lands to the Rear of Connolly Station, Dublin 1  
 DWG TITLE: BLOCK B - APARTMENT TYPES (3 of 4)  
 DWG NO: 18135-RKD-B-ZZ-DR-A-1512

REV.	PROJECT NO.	SCALE
A	18135	1 : 50

**RKD**  
 58 Northumberland Rd  
 Ballsbridge, Dublin 4  
 D04 WFB9, Ireland

+353 1 668 1005  
 info@rkd.ie  
 rkd.ie

**ARROW**  
 Name: Farinagade 13, st th  
 DK-1364 Copenhagen K  
 Denmark

+45 4236 2860  
 info@arrowarchitects.com  
 www.arrowarchitects.com