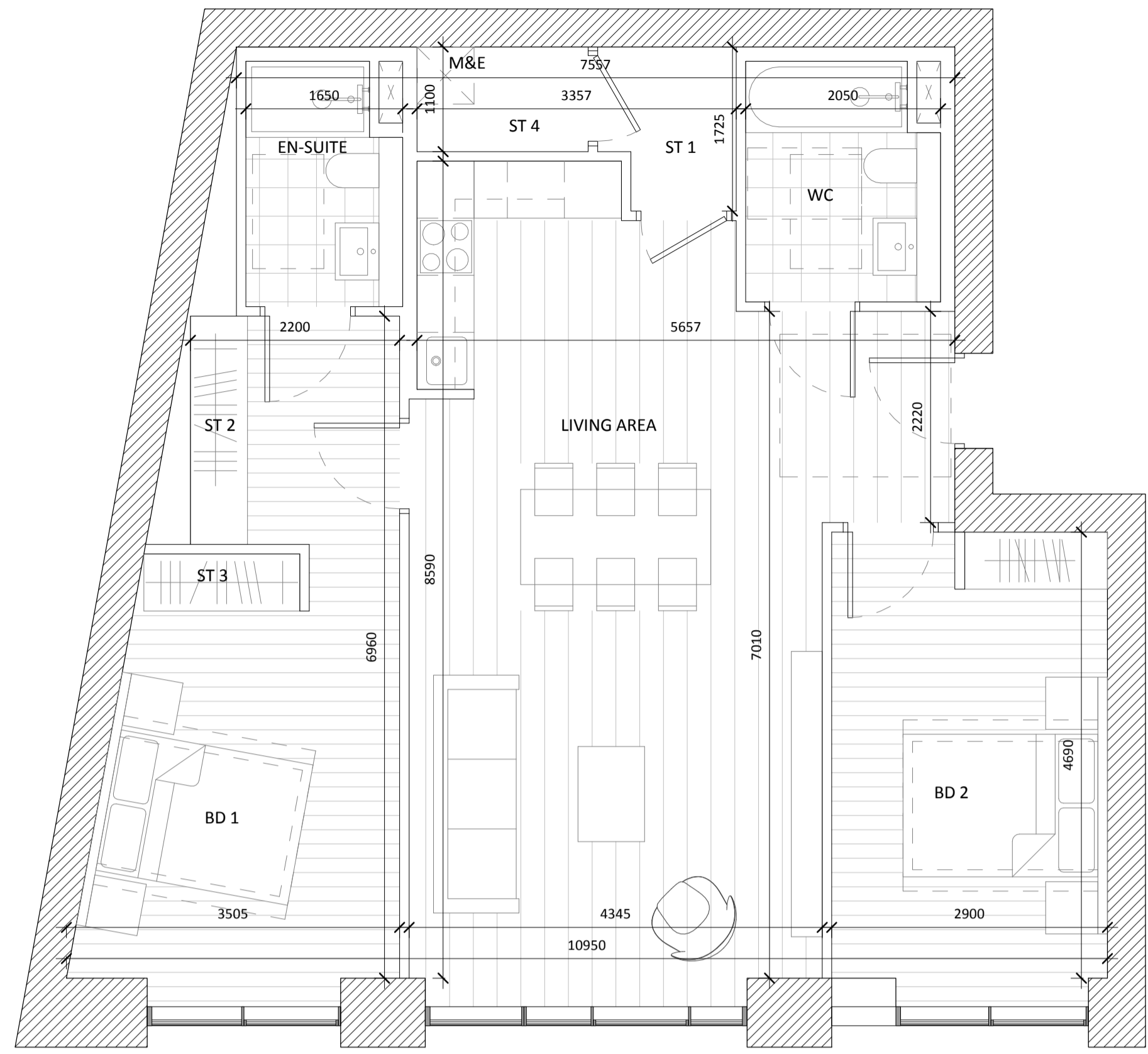
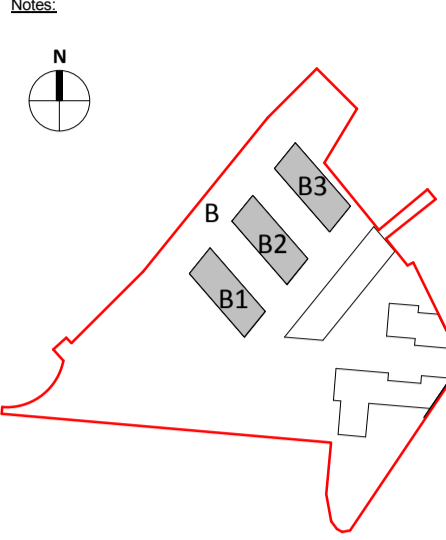
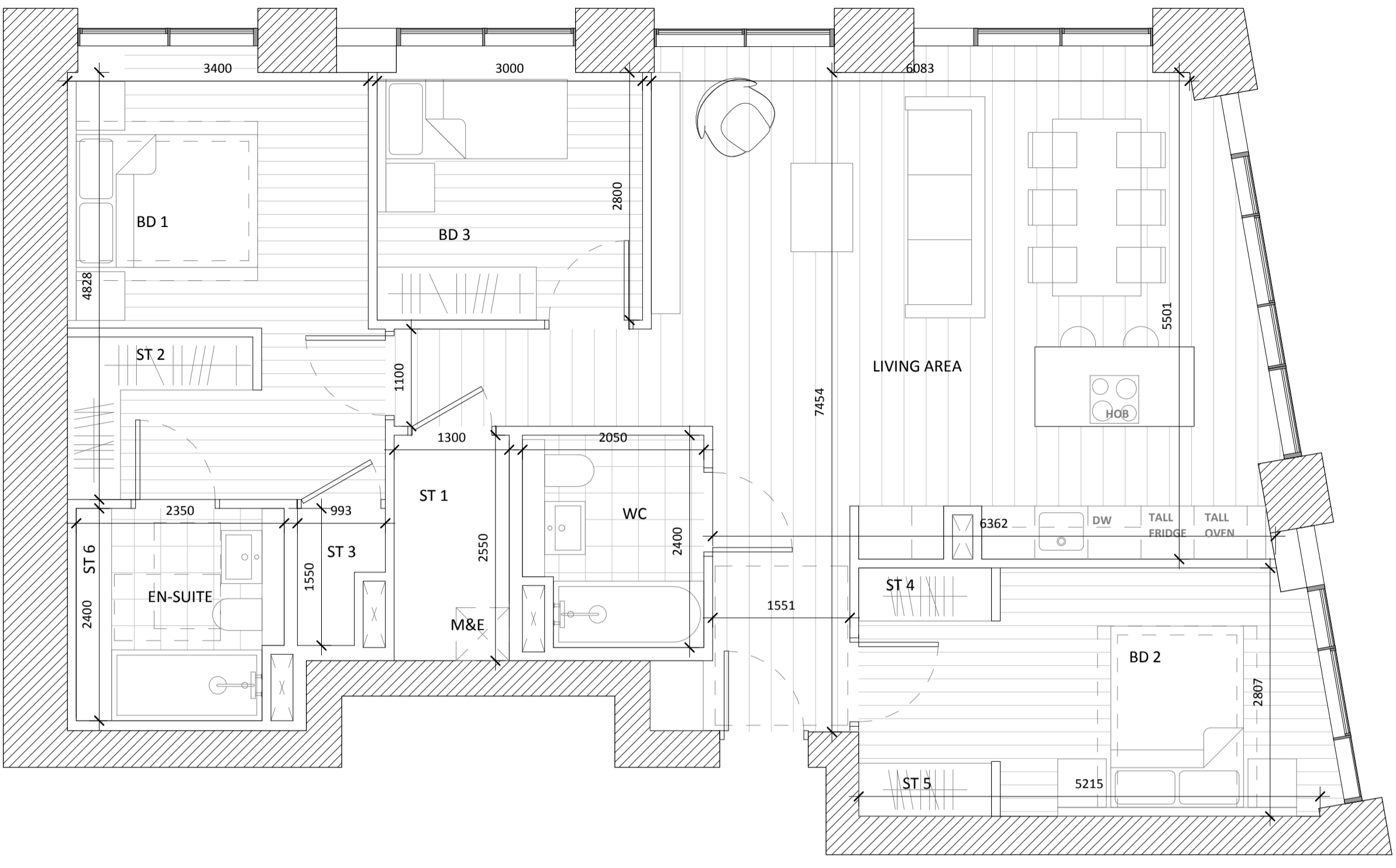


Copyright and ownership of this drawing is vested in RKD Architects, whose prior written consent is required for its use, reproduction or for publication to any third party. All rights reserved by the law of copyright and by international copyright conventions are reserved to RKD Architects and may be protected by court proceedings for damages and/or injunctions and costs. RKD Architects' Quality Management Systems are certified to ISO 9001:2015.



2B4P_B45					
	AREA ACHIEVED (m2)	AREA REQUIRED (m2)		AREA ACHIEVED (m2)	AREA REQUIRED (m2)
GROSS INTERNAL AREA	92.5	73	EN-SUITE	3.9	-
NET INTERNAL AREA	89.2	-	STORAGE 1	2.3	6
LIVING AREA	37.1	30	STORAGE 2	1.4	
BEDROOM 1	17.3	13	STORAGE 3	1.0	
BEDROOM 2	14.1	11.4	STORAGE 4	1.6	
WC	4.9	-			



3B5P_B61					
	AREA ACHIEVED (m2)	AREA REQUIRED (m2)		AREA ACHIEVED (m2)	AREA REQUIRED (m2)
GROSS INTERNAL AREA	105.8	90	EN-SUITE	4.6	-
NET INTERNAL AREA	103.2	-	STORAGE 1	2.9	9
LIVING AREA	34.1	34	STORAGE 2	2.0	
BEDROOM 1	15.1	13	STORAGE 3	1.3	
BEDROOM 2	12.7	11.4	STORAGE 4	0.9	
BEDROOM 3	9.0	7.1	STORAGE 5	0.9	
WC	4.6	-	STORAGE 6	1.0	

Rev.	Date	Description
A	OCT 2019	Issued for Planning Application Submission

STATUS: **PLANNING**

PROJECT: THE CONNOLLY QUARTER

PROJECT ADDRESS: Lands to the Rear of Connolly Station, Dublin 1

DWG TITLE: BLOCK B - APARTMENT TYPES (4 of 4)

DWG NO: 18135-RKD-B-ZZ-DR-A-1513

REV.	PROJECT NO.	SCALE
A	18135	1 : 50
DATE	JUN 2019	DRN AMG CHK CS

