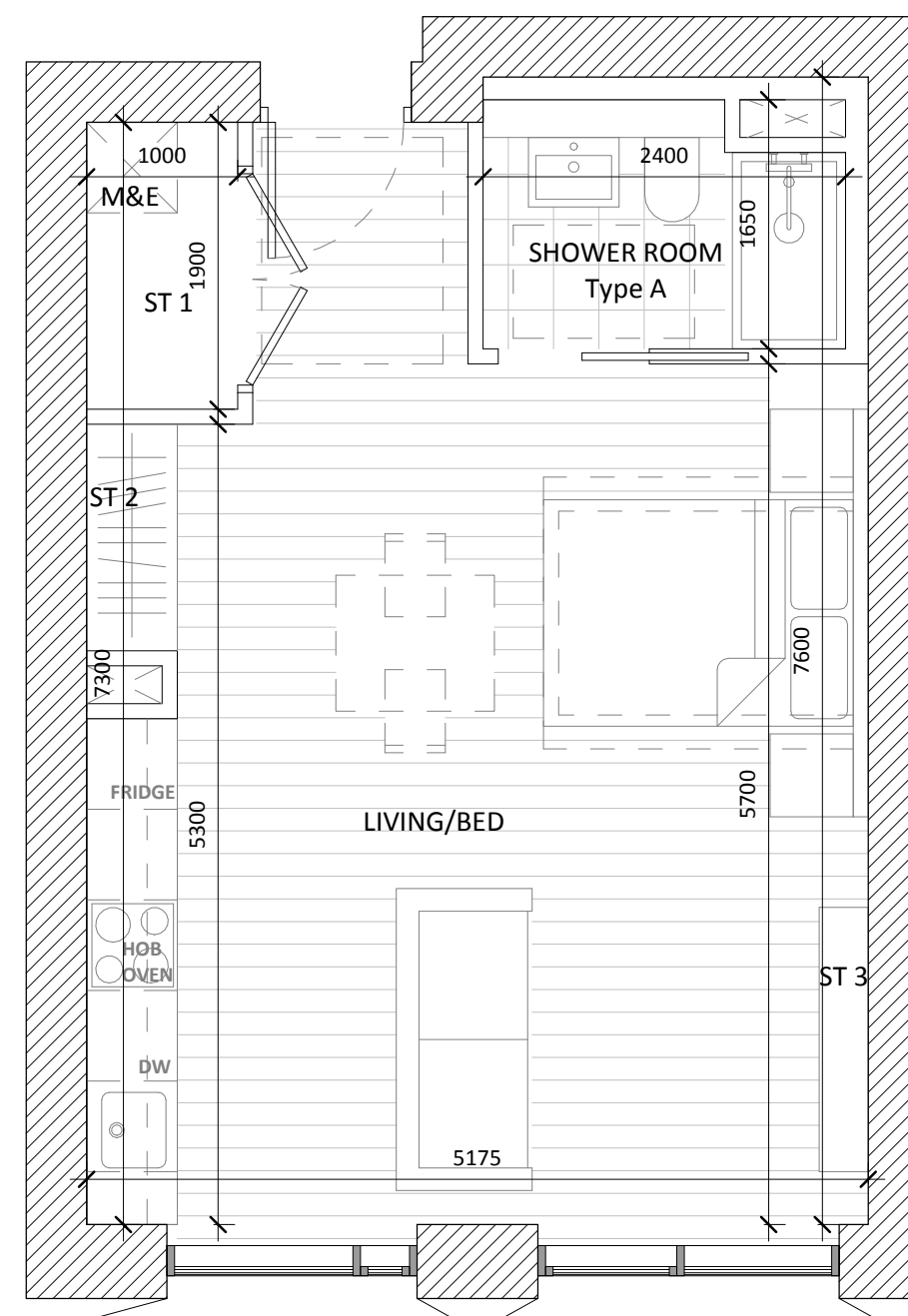
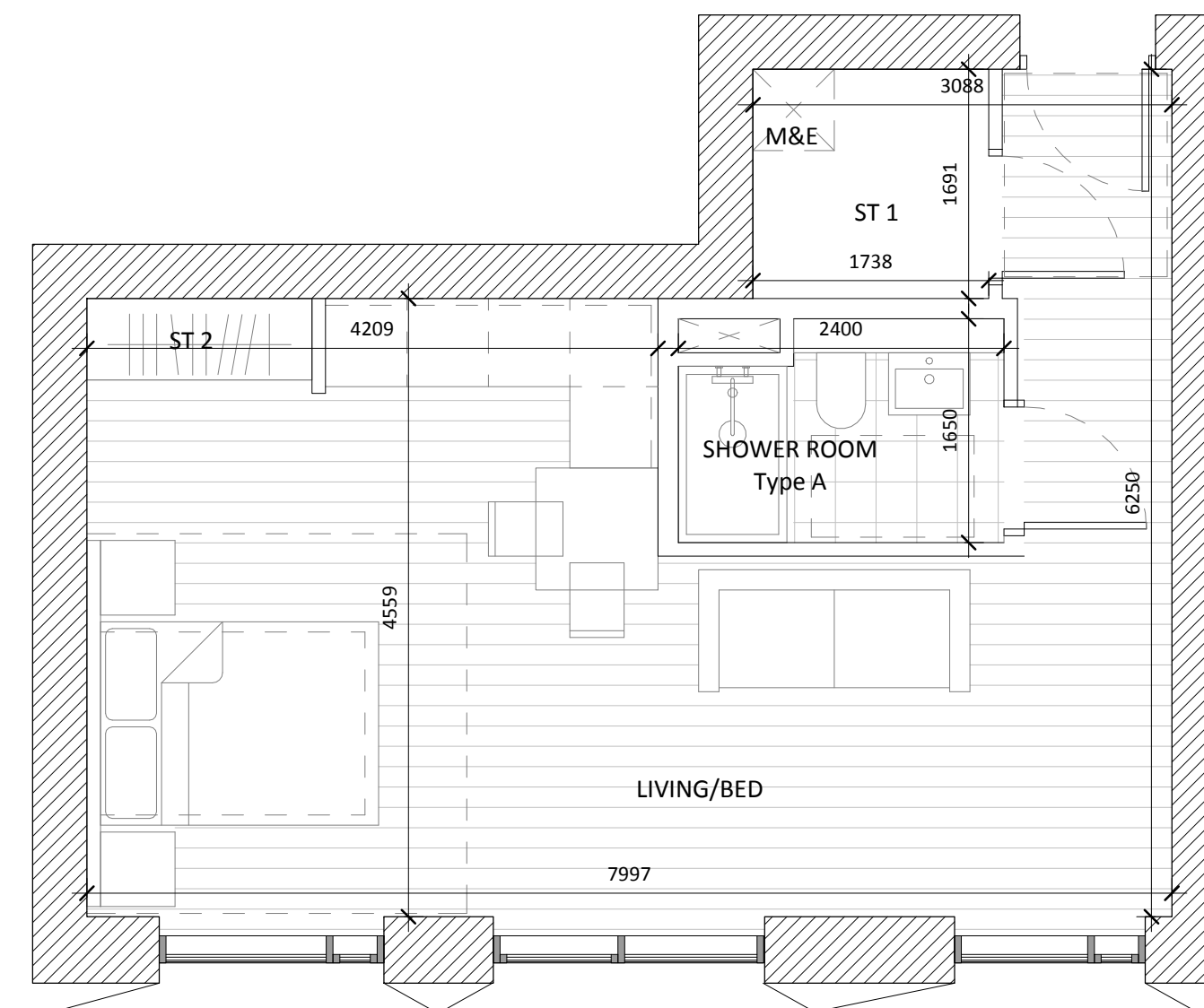


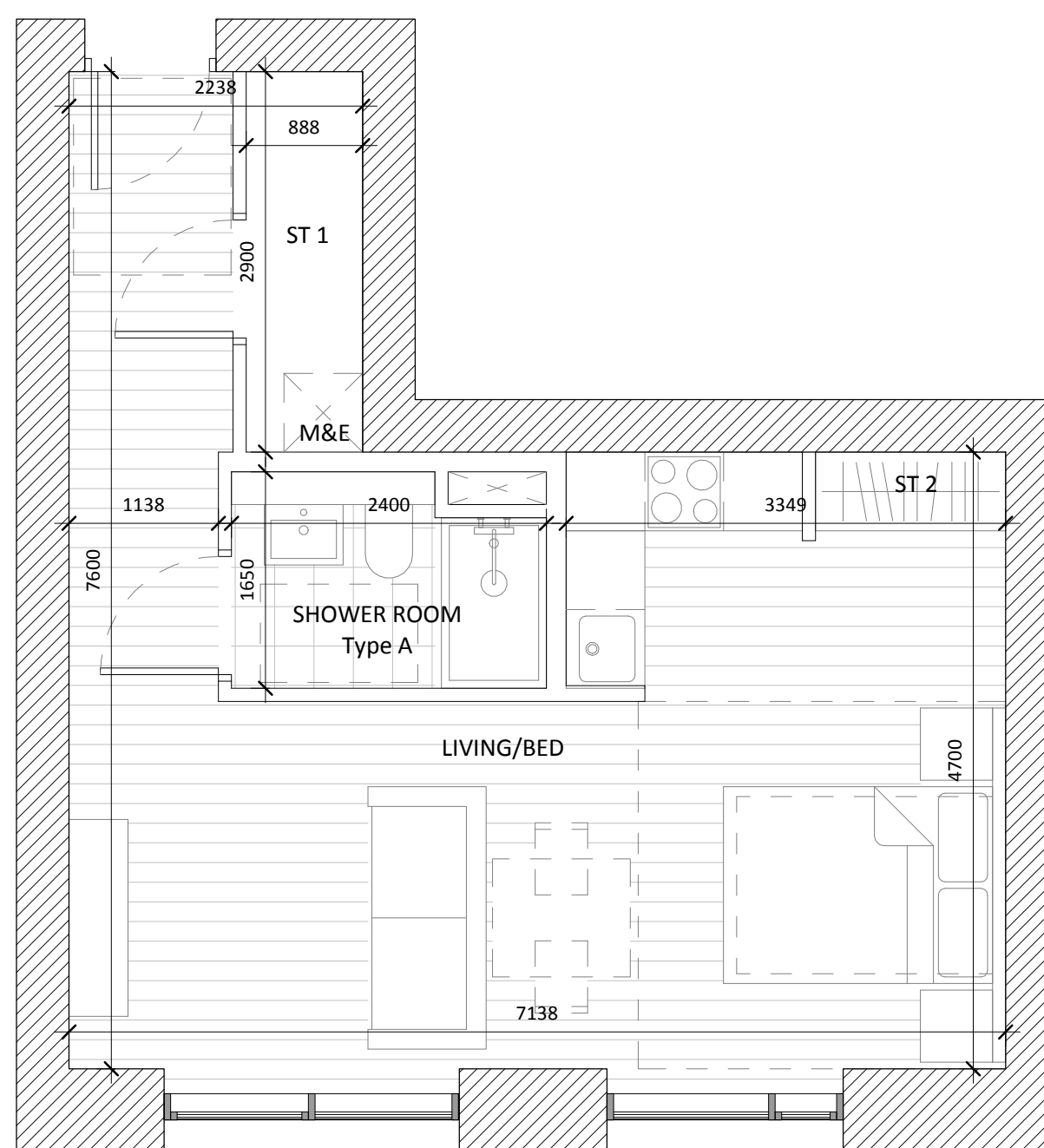
1B1P_C01		
	AREA ACHIEVED (m2)	AREA REQUIRED (m2)
GROSS INTERNAL AREA	39.8	37
NET INTERNAL AREA	38.6	-
LIVING / BED	30.8	30
SHOWER ROOM	3.7	-
STORAGE 1	2.1	3
STORAGE 2	0.9	



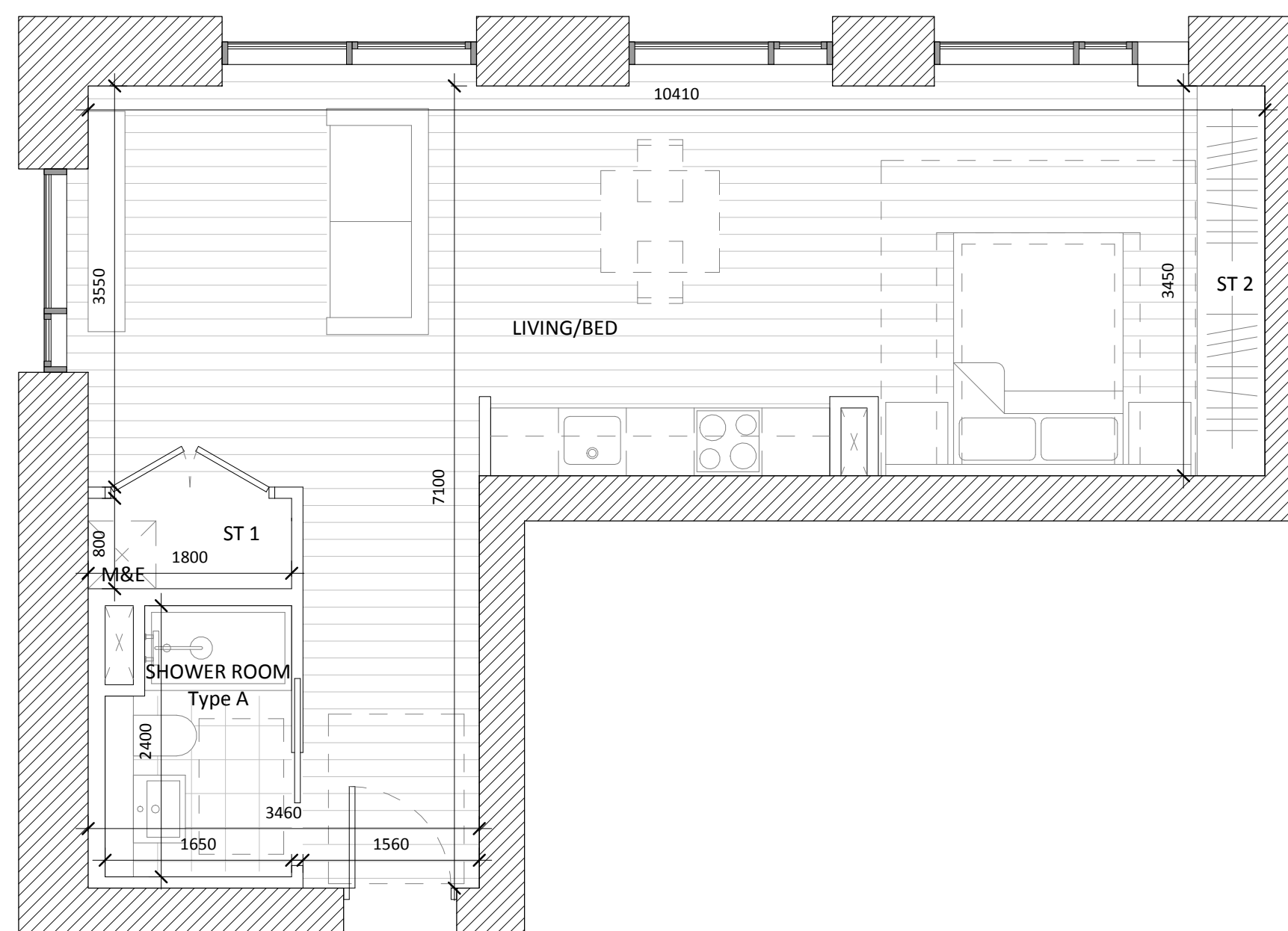
1B1P_C02		
	AREA ACHIEVED (m2)	AREA REQUIRED (m2)
GROSS INTERNAL AREA	38.8	37
NET INTERNAL AREA	37.6	-
LIVING / BED	30.1	30
SHOWER ROOM	3.7	-
STORAGE 1	1.5	
STORAGE 2	0.9	3
STORAGE 3	0.6	



1B1P_C03		
	AREA ACHIEVED (m2)	AREA REQUIRED (m2)
GROSS INTERNAL AREA	42.4	37
NET INTERNAL AREA	41.9	-
LIVING / BED	33.2	30
SHOWER ROOM	3.7	-
STORAGE 1	2.6	3
STORAGE 2	1.0	



1B1P_C04		
	AREA ACHIEVED (m2)	AREA REQUIRED (m2)
GROSS INTERNAL AREA	40.6	37
NET INTERNAL AREA	40.0	-
LIVING / BED	32.7	30
SHOWER ROOM	3.7	-
STORAGE 1	2.2	3
STORAGE 2	0.9	



1B1P_C05		
	AREA ACHIEVED (m2)	AREA REQUIRED (m2)
GROSS INTERNAL AREA	50.0	37
NET INTERNAL AREA	48.8	-
LIVING / BED	32.7	30
SHOWER ROOM	3.7	-
STORAGE 1	1.1	3
STORAGE 2	2.0	

Rev.	Date	Description
A	OCT 2019	Issued for Planning Application Submission

STATUS: **PLANNING**
 PROJECT: THE CONNOLLY QUARTER
 PROJECT ADDRESS: Lands to the Rear of Connolly Station, Dublin 1
 DWG TITLE: BLOCK C APARTMENT TYPES - 1 of 4
 DWG NO: 18135-RKD-C-ZZ-DR-A-1510

REV.	PROJECT NO.	SCALE
A	18135	1 : 50

RKD
 58 Northumberland Rd
 Ballsbridge, Dublin 4
 D04 W P98, Ireland
 +353 1 668 1055
 info@rkd.ie
 rkd.ie

ARROW
 Name: Farinagade 13, 41 th
 DK-1364 Copenhagen K
 Denmark
 +45 4236 2860
 info@arrowarchitects.com
 www.arrowarchitects.com