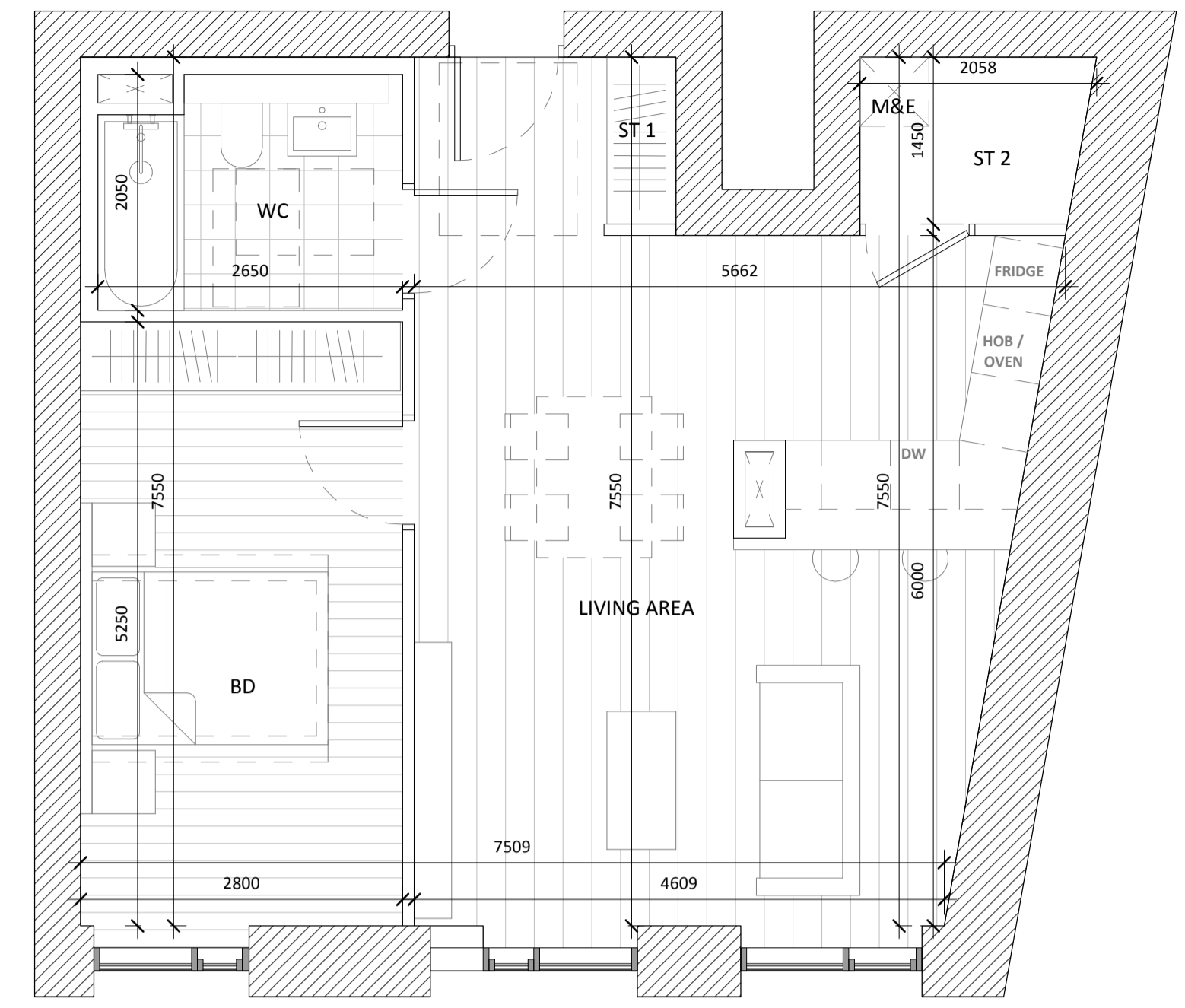
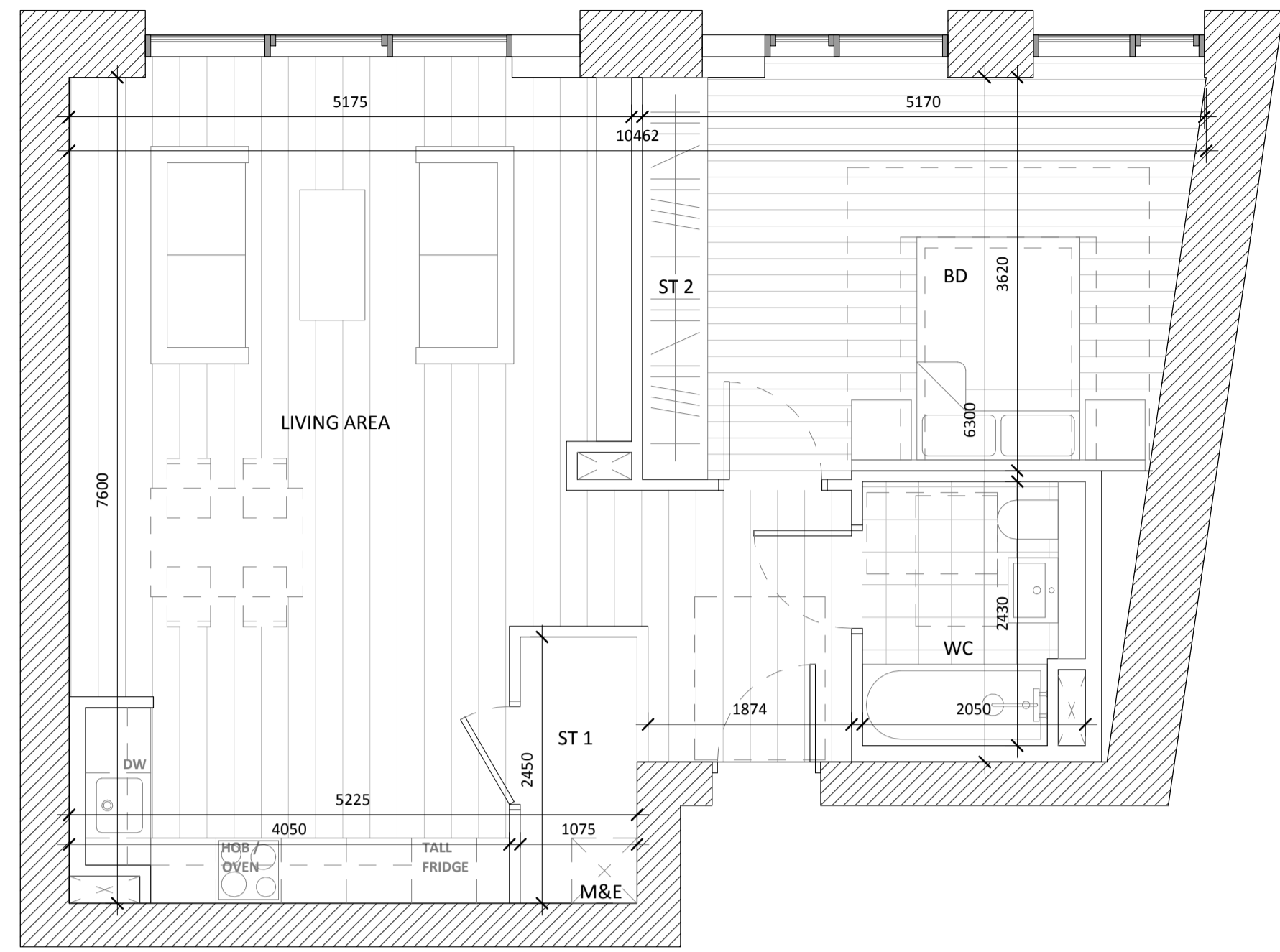
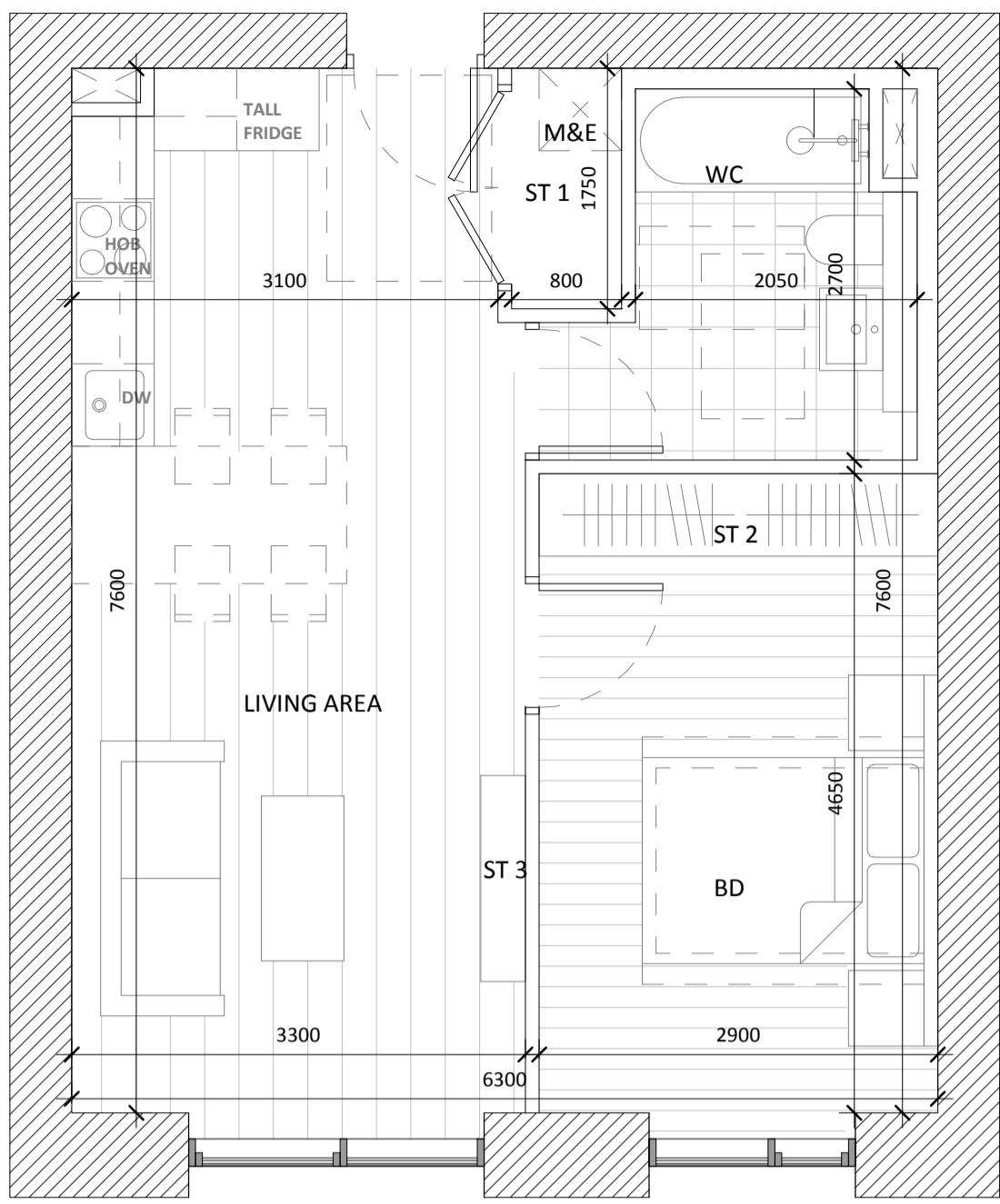
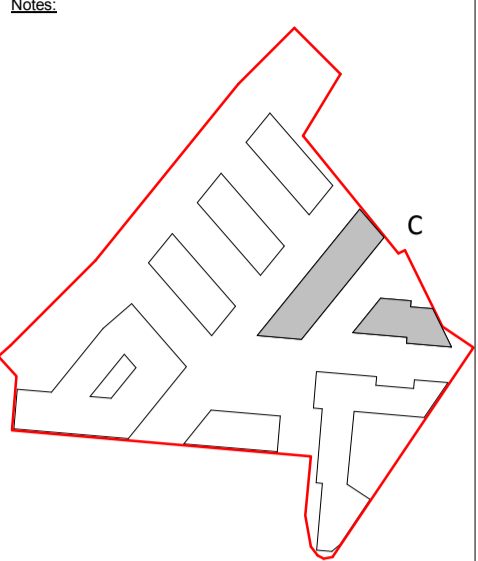


Copyright and ownership of this drawing is vested in RKD Architects, whose prior written consent is required for its use, reproduction or for publication to any third party. All rights reserved by the law of copyright and by international copyright conventions are reserved to RKD Architects and may be protected by court proceedings for damages and/or injunctions and costs. RKD Architects' Quality Management Systems are certified to ISO 9001:2015.



1B2P_C21

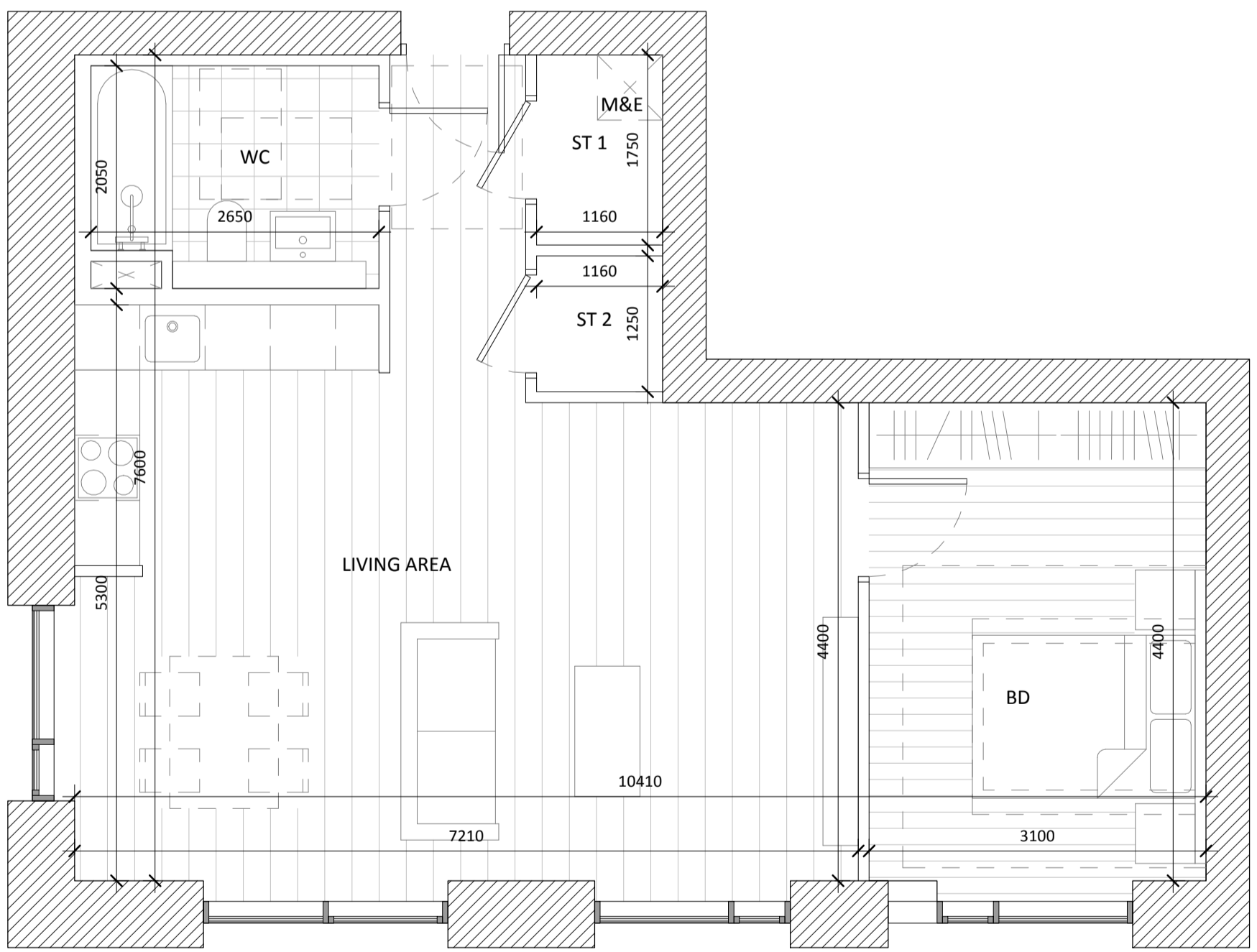
	AREA ACHIEVED (m2)	AREA REQUIRED (m2)
GROSS INTERNAL AREA	48.5	45
NET INTERNAL AREA	47.3	-
LIVING AREA	24.3	23
BEDROOM	12.0	11.4
WC	6.0	-
STORAGE 1	1.0	-
STORAGE 2	1.7	3
STORAGE 3	0.5	-

1B2P_C22

	AREA ACHIEVED (m2)	AREA REQUIRED (m2)
GROSS INTERNAL AREA	71.1	45
NET INTERNAL AREA	68.6	-
LIVING AREA	35.8	23
BEDROOM	16.4	11.4
WC	6.0	-
STORAGE 1	2.3	3
STORAGE 2	2.2	-

1B2P_C23

	AREA ACHIEVED (m2)	AREA REQUIRED (m2)
GROSS INTERNAL AREA	60.0	45
NET INTERNAL AREA	58.6	-
LIVING AREA	31.0	23
BEDROOM	14.9	11.4
WC	5.2	-
STORAGE 1	0.8	-
STORAGE 2	2.4	3



1B2P_C24

	AREA ACHIEVED (m2)	AREA REQUIRED (m2)
GROSS INTERNAL AREA	64.5	45
NET INTERNAL AREA	63.6	-
LIVING AREA	39.4	23
BEDROOM	14.0	11.4
WC	6.0	-
STORAGE 1	1.7	-
STORAGE 2	1.4	3

Rev.	Date	Description
A	OCT 2019	Issued for Planning Application Submission

STATUS: **PLANNING**

PROJECT: THE CONNOLLY QUARTER

PROJECT ADDRESS: Lands to the Rear of Connolly Station, Dublin 1

DWG TITLE: BLOCK C APARTMENT TYPES - 2 of 4

DWG NO: 18135-RKD-C-ZZ-DR-A-1511

REV.	PROJECT NO.	SCALE
A	18135	1 : 50

DATE: JUN 2019 DRN: AMG CHK: JH

RKD

59 Northumberland Rd
Salthouse, Dublin 4
D04 W P95, Ireland

+353 1 668 1055
info@rkd.ie
rkd.ie

ARROW

Name: Farinagade 13, 41 th
DK-1364 Copenhagen K
Denmark

+45 4236 2860
info@arrowarchitects.com
www.arrowarchitects.com