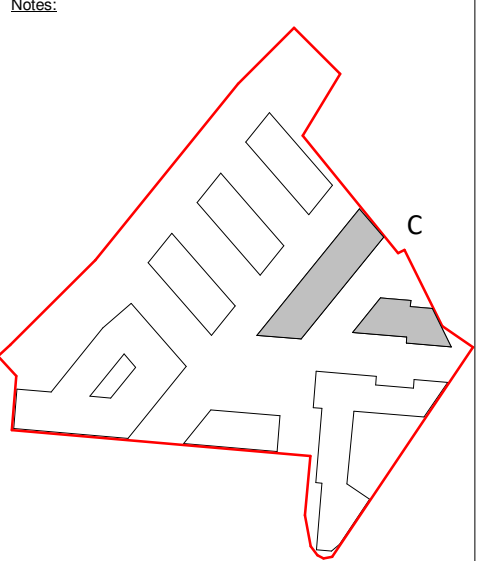
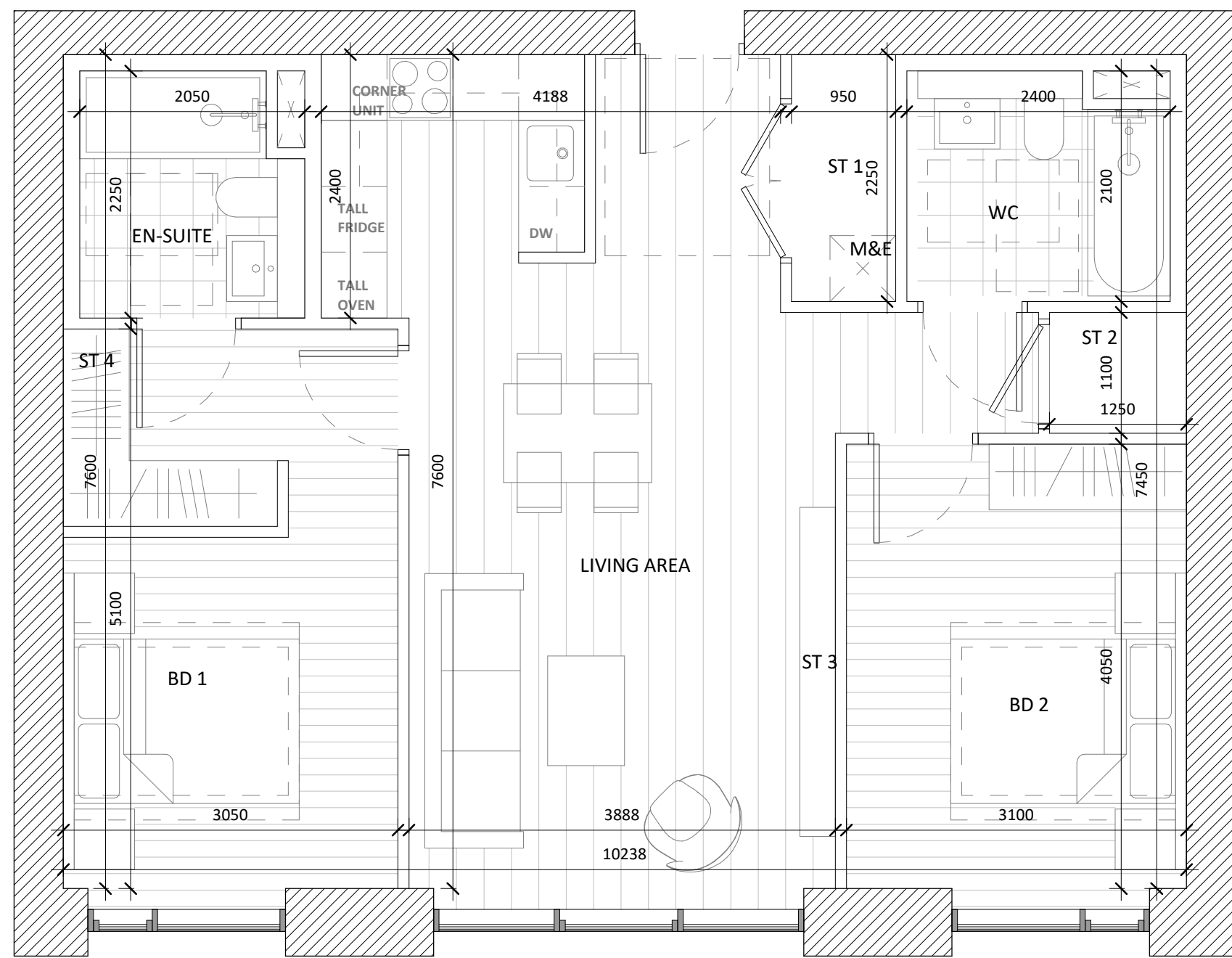


Copyright and ownership of this drawing is vested in RKD Architects, whose prior written consent is required for its use, reproduction or for publication to any third party. All rights reserved by the law of copyright and by international copyright conventions are reserved to RKD Architects and may be protected by court proceedings for damages and/or injunctions and costs. RKD Architects' Quality Management Systems are certified to ISO 9001:2015.



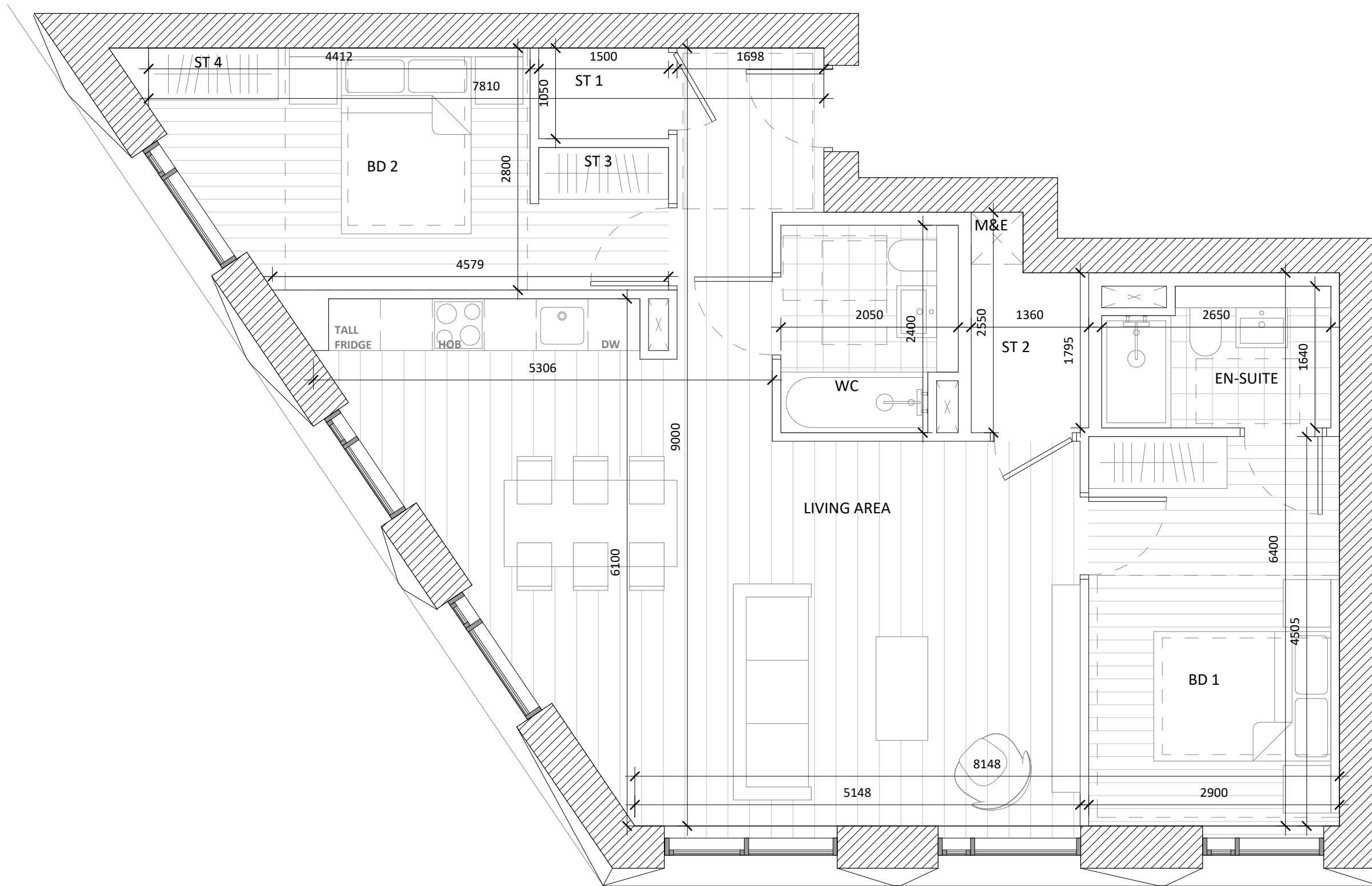
Notes:



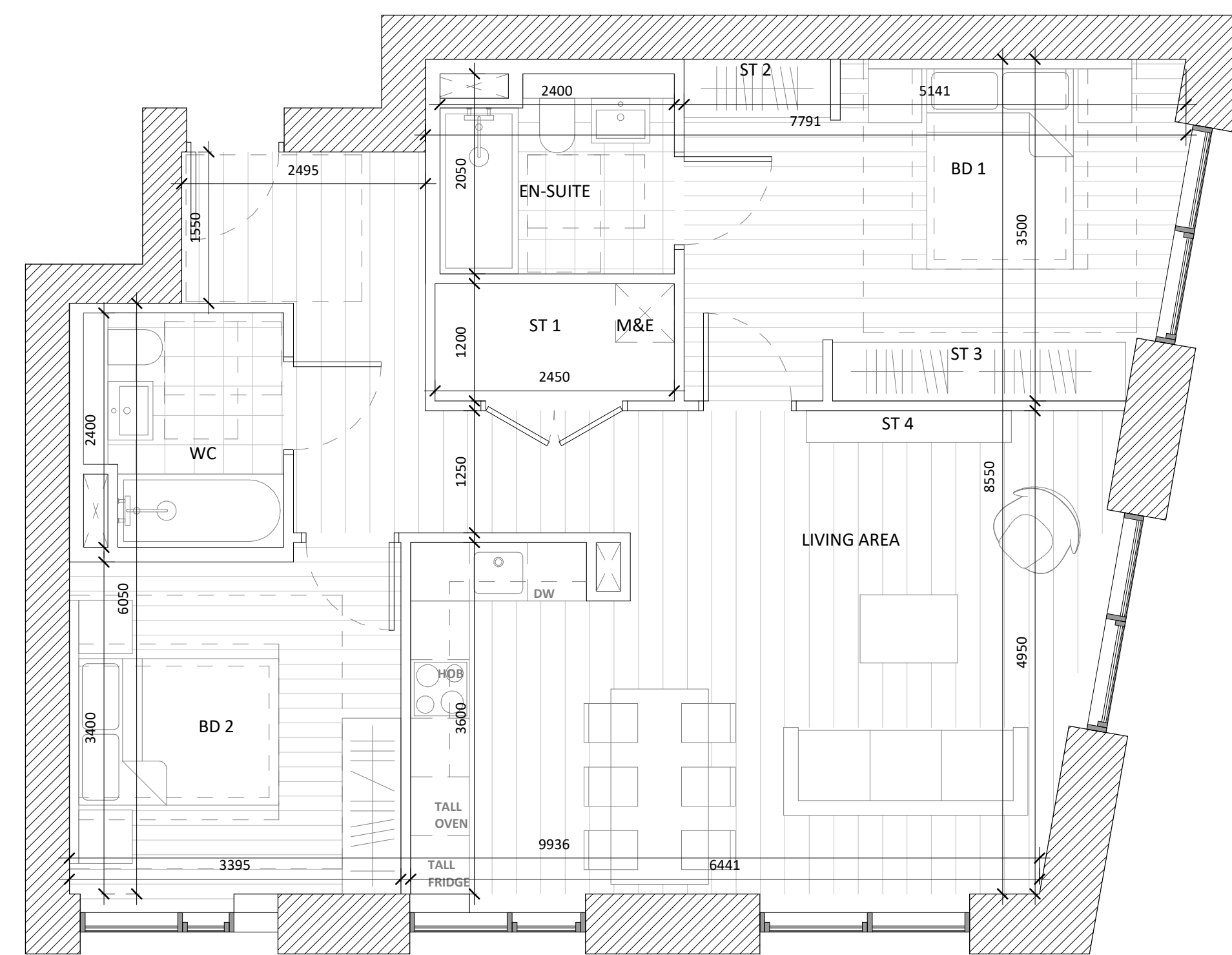
2B4P_C41					
	AREA ACHIEVED (m2)	AREA REQUIRED (m2)		AREA ACHIEVED (m2)	AREA REQUIRED (m2)
GROSS INTERNAL AREA	79.2	73	EN-SUITE	4.3	-
NET INTERNAL AREA	77.0	-	STORAGE 1	1.8	6
LIVING AREA	31.8	30	STORAGE 2	1.4	
BEDROOM 1	13.7	13	STORAGE 3	1.0	
BEDROOM 2	12.9	11.4	STORAGE 4	1.9	
WC	4.6	-			



2B4P_C42					
	AREA ACHIEVED (m2)	AREA REQUIRED (m2)		AREA ACHIEVED (m2)	AREA REQUIRED (m2)
GROSS INTERNAL AREA	93.2	73	EN-SUITE	4.0	-
NET INTERNAL AREA	91.7	-	STORAGE 1	1.6	6
LIVING AREA	36.3	30	STORAGE 2	1.6	
BEDROOM 1	11.9	11.4	STORAGE 3	1.7	
BEDROOM 2	13.6	13	STORAGE 4	1.1	
WC	4.7	-			



2B4P_C43					
	AREA ACHIEVED (m2)	AREA REQUIRED (m2)		AREA ACHIEVED (m2)	AREA REQUIRED (m2)
GROSS INTERNAL AREA	88.2	73	EN-SUITE	4.0	-
NET INTERNAL AREA	85.7	-	STORAGE 1	1.6	6
LIVING AREA	37.7	30	STORAGE 2	2.6	
BEDROOM 1	13.2	13	STORAGE 3	0.9	
BEDROOM 2	11.8	11.4	STORAGE 4	0.9	
WC	4.7	-			



2B4P_C44					
	AREA ACHIEVED (m2)	AREA REQUIRED (m2)		AREA ACHIEVED (m2)	AREA REQUIRED (m2)
GROSS INTERNAL AREA	87.9	73	EN-SUITE	4.6	-
NET INTERNAL AREA	85.9	-	STORAGE 1	2.6	6
LIVING AREA	31.1	30	STORAGE 2	0.9	
BEDROOM 1	14.5	13	STORAGE 3	1.8	
BEDROOM 2	12.1	11.4	STORAGE 4	0.7	
WC	4.6	-			

Rev.	Date	Description
A	OCT 2019	Issued for Planning Application Submission

STATUS: **PLANNING**

PROJECT: THE CONNOLLY QUARTER

PROJECT ADDRESS: Lands to the Rear of Connolly Station, Dublin 1

DWG TITLE: BLOCK C APARTMENT TYPES - 3 of 4

DWG NO.: 18135-RKD-C-ZZ-DR-A-1512

REV.	PROJECT NO.	SCALE
A	18135	1 : 50

