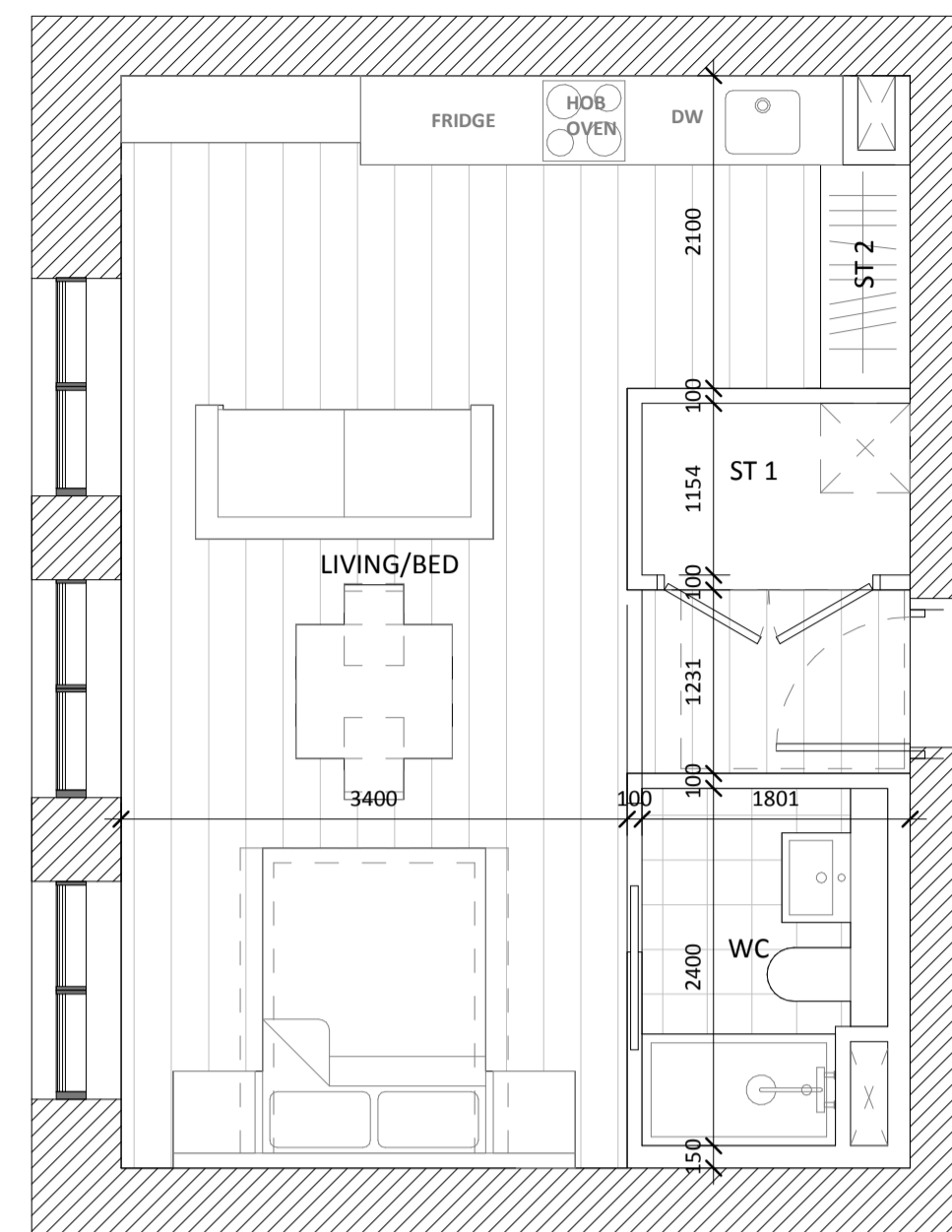
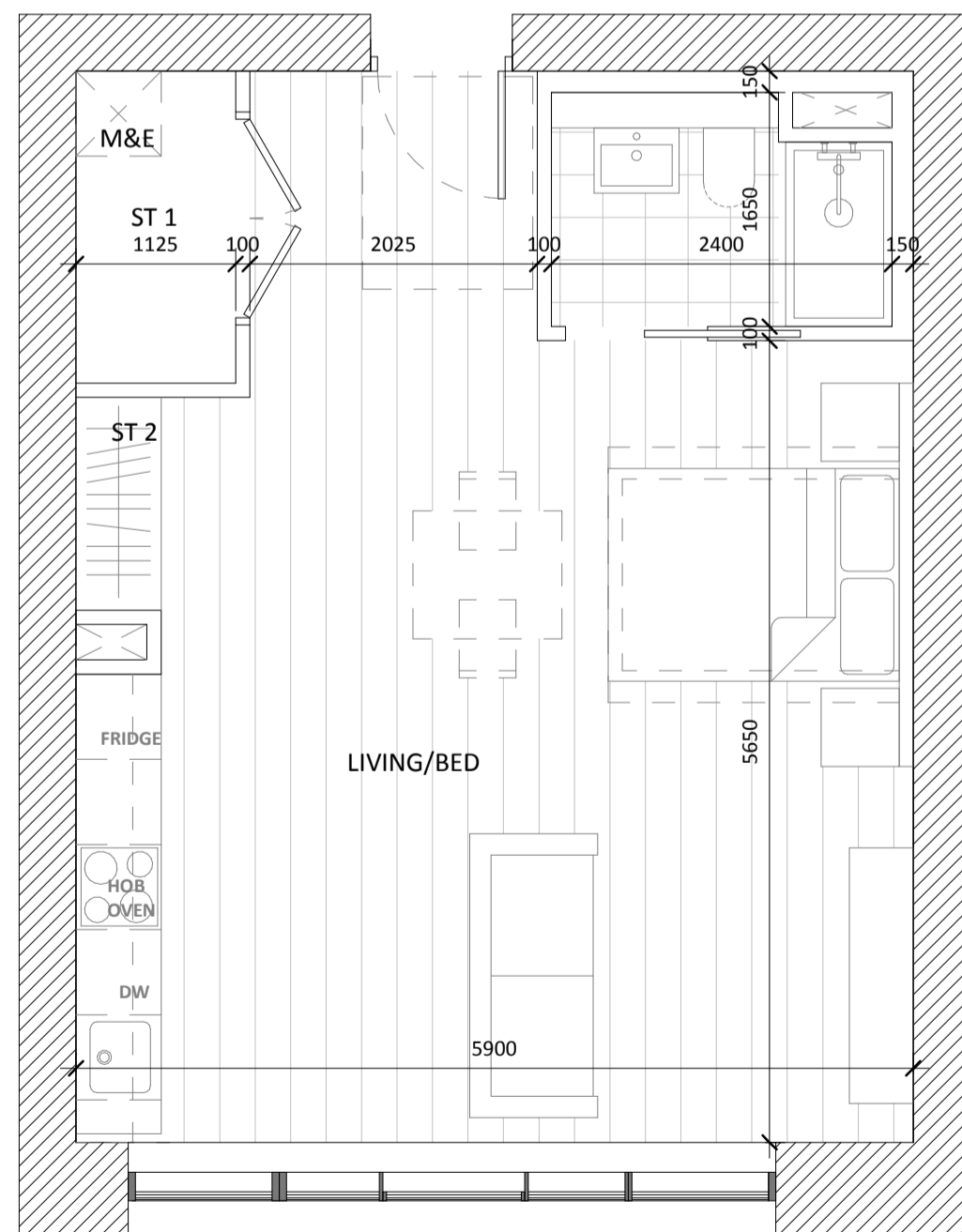


1B1P_D01		
	AREA ACHIEVED (m2)	AREA REQUIRED (m2)
GROSS INTERNAL AREA	40.0	37
NET INTERNAL AREA	37.7	-
LIVING / BED	31.0	30
WC	3.7	-
STORAGE 1	2.1	3
STORAGE 2	0.9	



1B1P_D02		
	AREA ACHIEVED (m2)	AREA REQUIRED (m2)
GROSS INTERNAL AREA	38.9	37
NET INTERNAL AREA	36.7	-
LIVING / BED	30.0	30
WC	3.7	-
STORAGE 1	1.7	3
STORAGE 2	1.3	



1B1P_D03		
	AREA ACHIEVED (m2)	AREA REQUIRED (m2)
GROSS INTERNAL AREA	44.5	37
NET INTERNAL AREA	42.2	-
LIVING / BED	35.5	30
WC	3.7	-
STORAGE 1	2.1	3
STORAGE 2	0.9	

Rev.	Date	Description
A	OCT 2019	Issued for Planning Application Submission

STATUS **PLANNING**

PROJECT The Connolly Quarter

PROJECT ADDRESS Lands to the Rear of Connolly Station, Dublin 1

DWG TITLE BLOCK D - APARTMENT TYPES (1 OF 5)

DWG NO. 18135-ARROW-D-ZZ-DR-A-1510

REV.	PROJECT NO.	SCALE
A	18135	1 : 50

