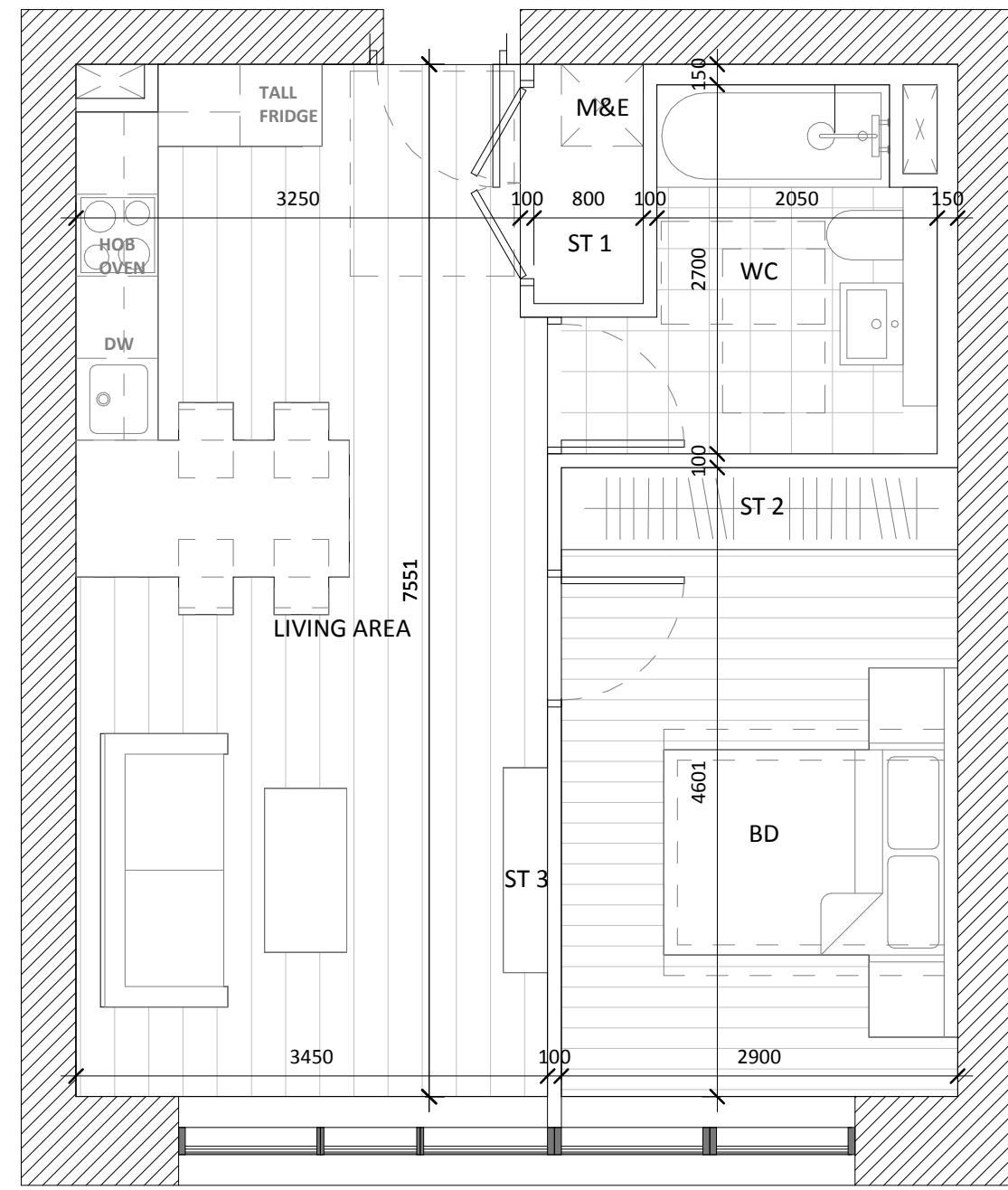
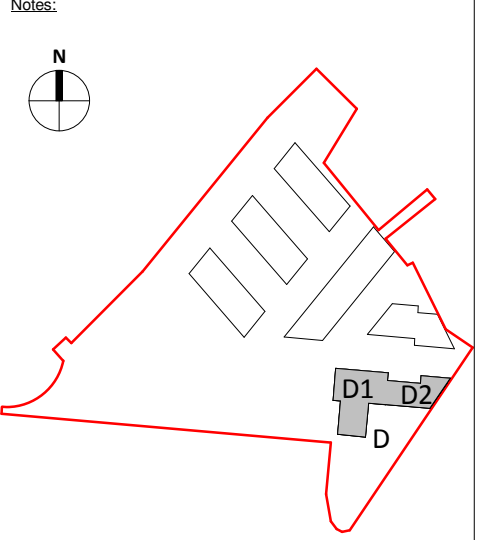
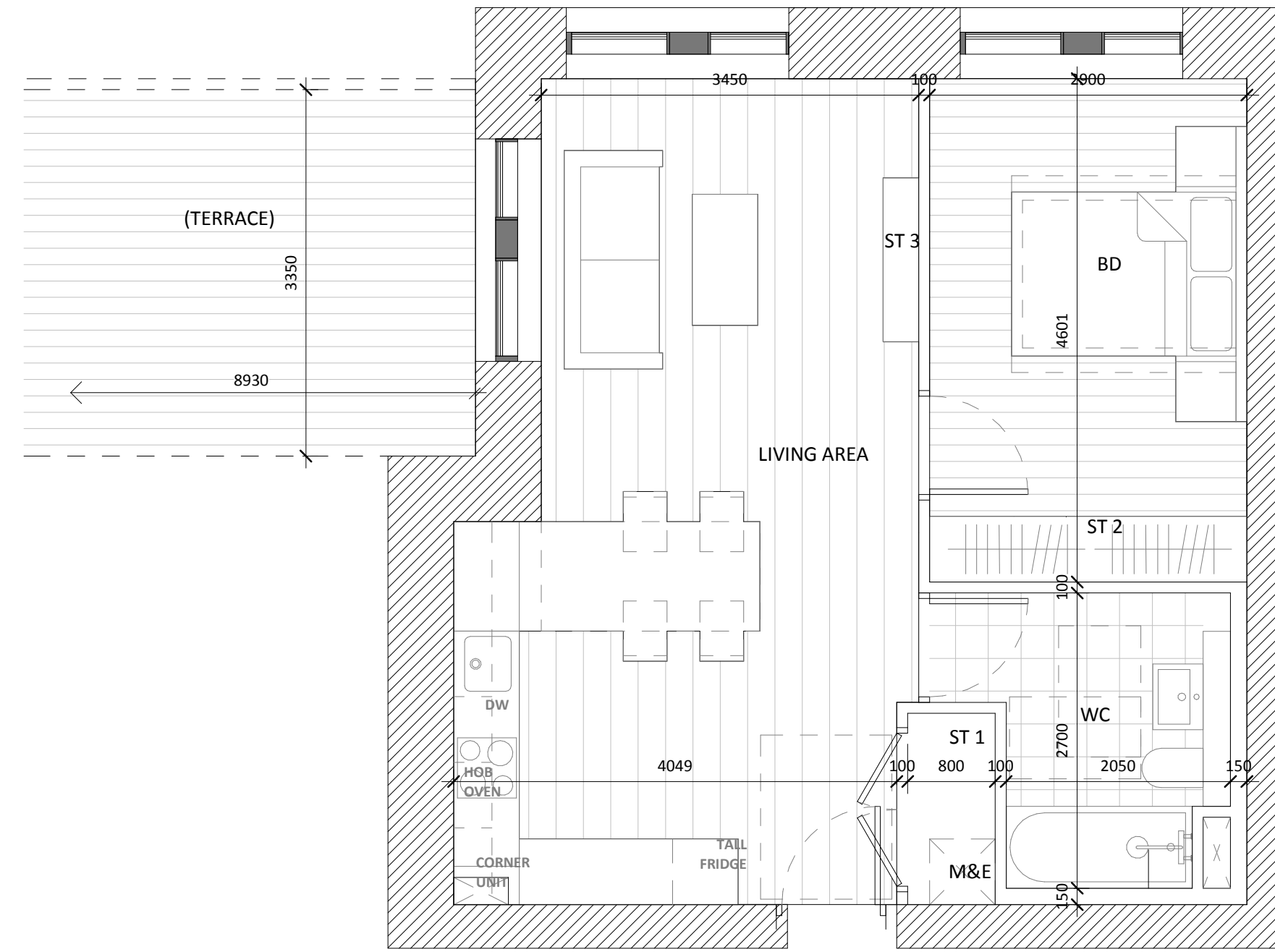


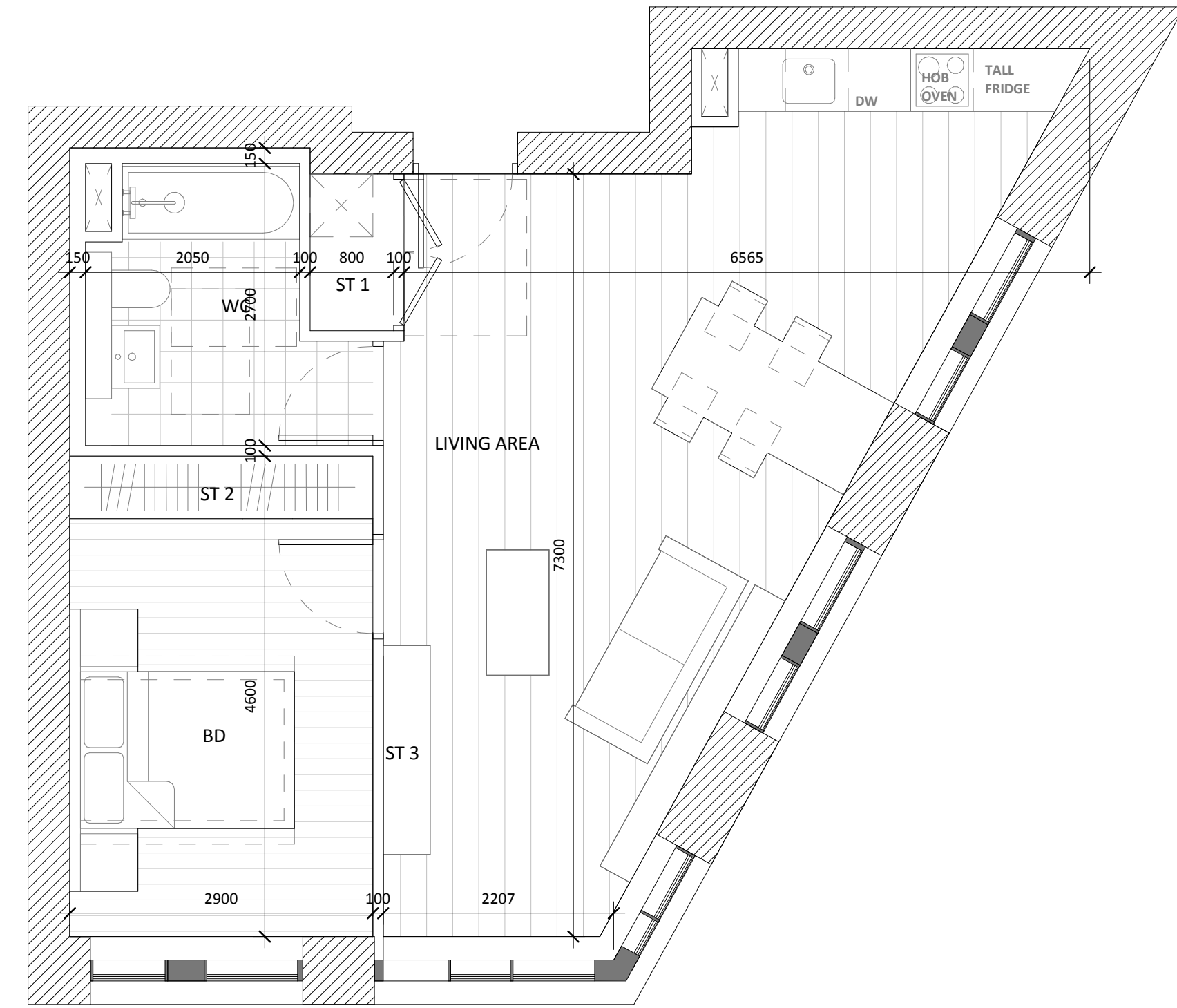
Copyright and ownership of this drawing is vested in RKD Architects, whose prior written consent is required for its use, reproduction or for publication to any third party. All rights reserved by the law of copyright and by international copyright conventions are reserved to RKD Architects and may be protected by court proceedings for damages and/or injunctions and costs. RKD Architects' Quality Management Systems are certified to ISO 9001:2015.



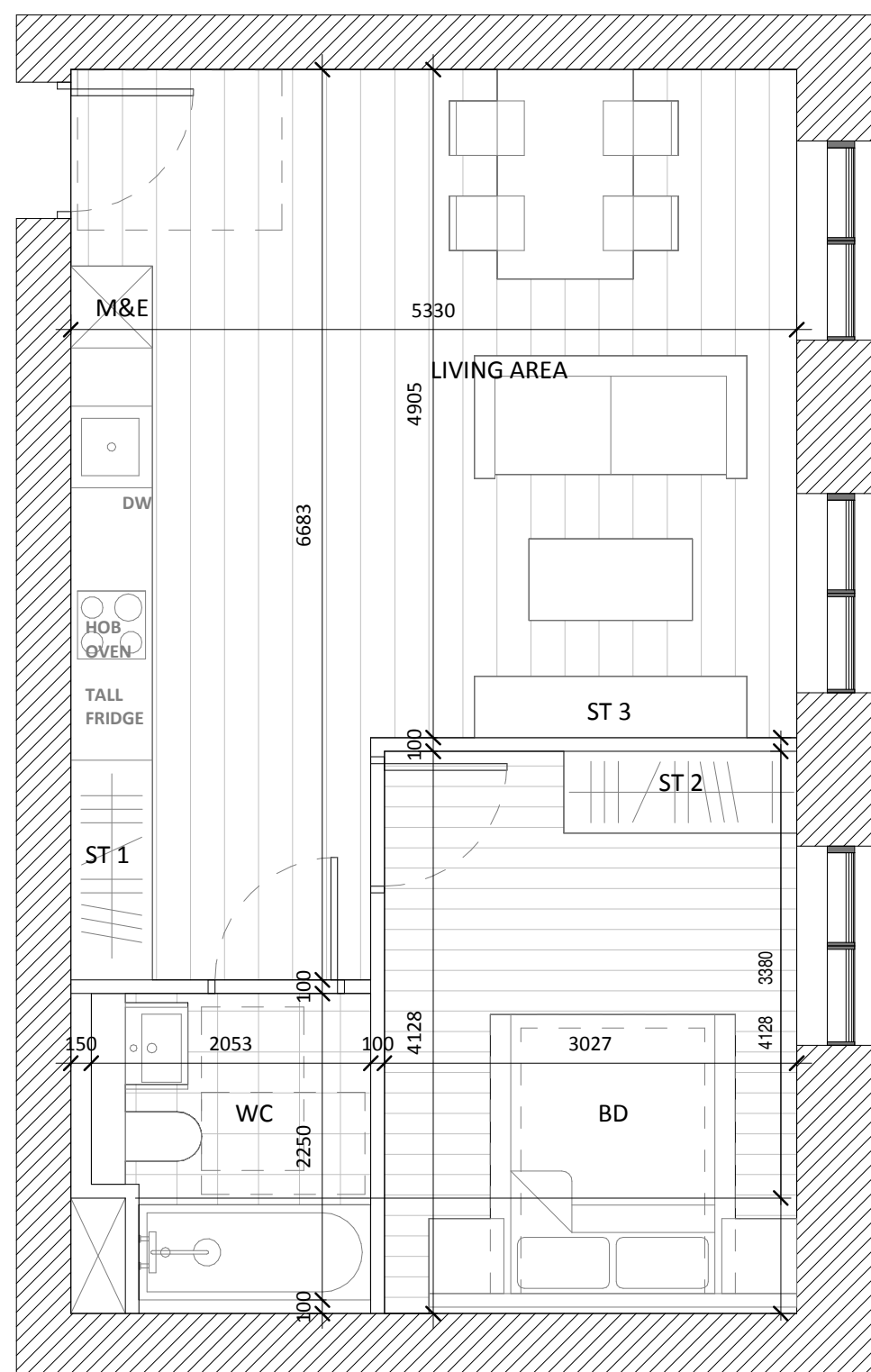
1B2P_D21	AREA ACHIEVED (m2)	AREA REQUIRED (m2)
GROSS INTERNAL AREA	48.7	45
NET INTERNAL AREA	45.8	-
LIVING AREA	25.0	23
BEDROOM	11.6	11.4
WC	6.0	-
STORAGE 1	1.0	3
STORAGE 2	1.7	
STORAGE 3	0.5	



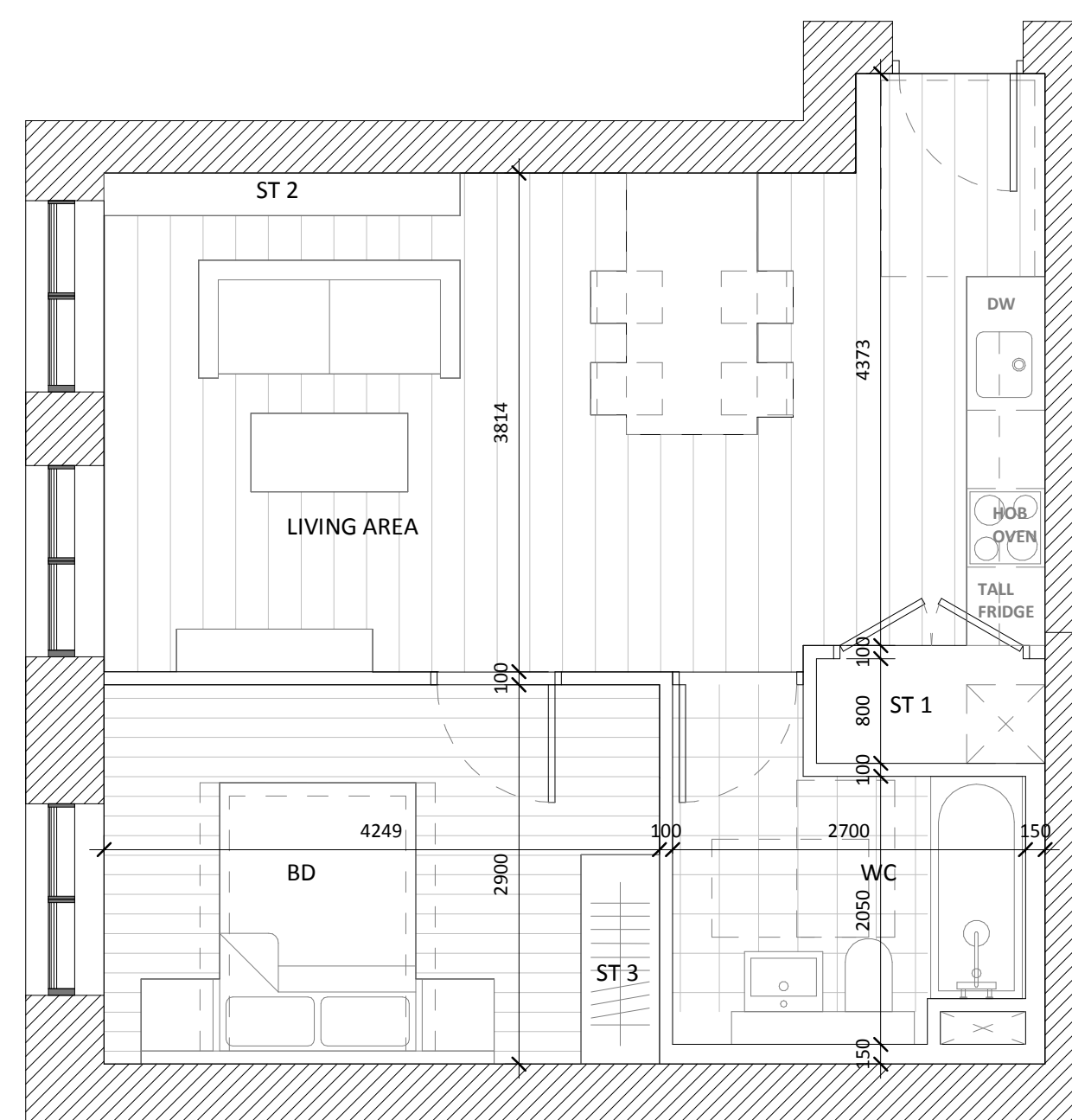
1B2P_D22	AREA ACHIEVED (m2)	AREA REQUIRED (m2)
GROSS INTERNAL AREA	51.5	45
NET INTERNAL AREA	48.6	-
LIVING AREA	27.8	23
BEDROOM	11.6	11.4
WC	6.0	-
STORAGE 1	1.0	3
STORAGE 2	1.7	
STORAGE 3	0.5	
(variant: TERRACE)	31.0	5



1B2P_D23	AREA ACHIEVED (m2)	AREA REQUIRED (m2)
GROSS INTERNAL AREA	56.5	45
NET INTERNAL AREA	53.5	-
LIVING AREA	32.5	23
BEDROOM	11.6	11.4
WC	6.0	-
STORAGE 1	0.8	3
STORAGE 2	1.7	
STORAGE 3	0.9	



1B2P_D24	AREA ACHIEVED (m2)	AREA REQUIRED (m2)
GROSS INTERNAL AREA	48.7	45
NET INTERNAL AREA	47.3	-
LIVING AREA	28.2	23
BEDROOM	11.4	11.4
WC	4.7	-
STORAGE 1	1.0	3
STORAGE 2	1.1	
STORAGE 3	0.9	



1B2P_D25	AREA ACHIEVED (m2)	AREA REQUIRED (m2)
GROSS INTERNAL AREA	50.2	45
NET INTERNAL AREA	47.6	-
LIVING AREA	27.2	23
BEDROOM	11.4	11.4
WC	6.0	-
STORAGE 1	1.0	3
STORAGE 2	1.0	
STORAGE 3	1.0	

A OCT 2019 Issued for Planning Application Submission

Rev. Date Description

STATUS **PLANNING**

PROJECT The Connolly Quarter

PROJECT ADDRESS Lands to the Rear of Connolly Station, Dublin 1

DWG TITLE BLOCK D - APARTMENT TYPES (2 OF 5)

DWG NO. 18135-ARROW-D-ZZ-DR-A-1511

REV. PROJECT NO. SCALE

A 18135 1 : 50

DATE JUN 19 DRN ILA CHK UR

**RKD**

59 Northumberland Rd  
Ballinacorney, Dublin 4  
D04 W P86, Ireland

+353 1 668 1055  
info@rkd.ie  
rkd.ie

**ARROW**

Nørre Farimagsgade 13, 4th fl.  
DK-1364 Copenhagen K  
Denmark

+45 4226 2860  
info@arrowarchitects.com  
www.arrowarchitects.com