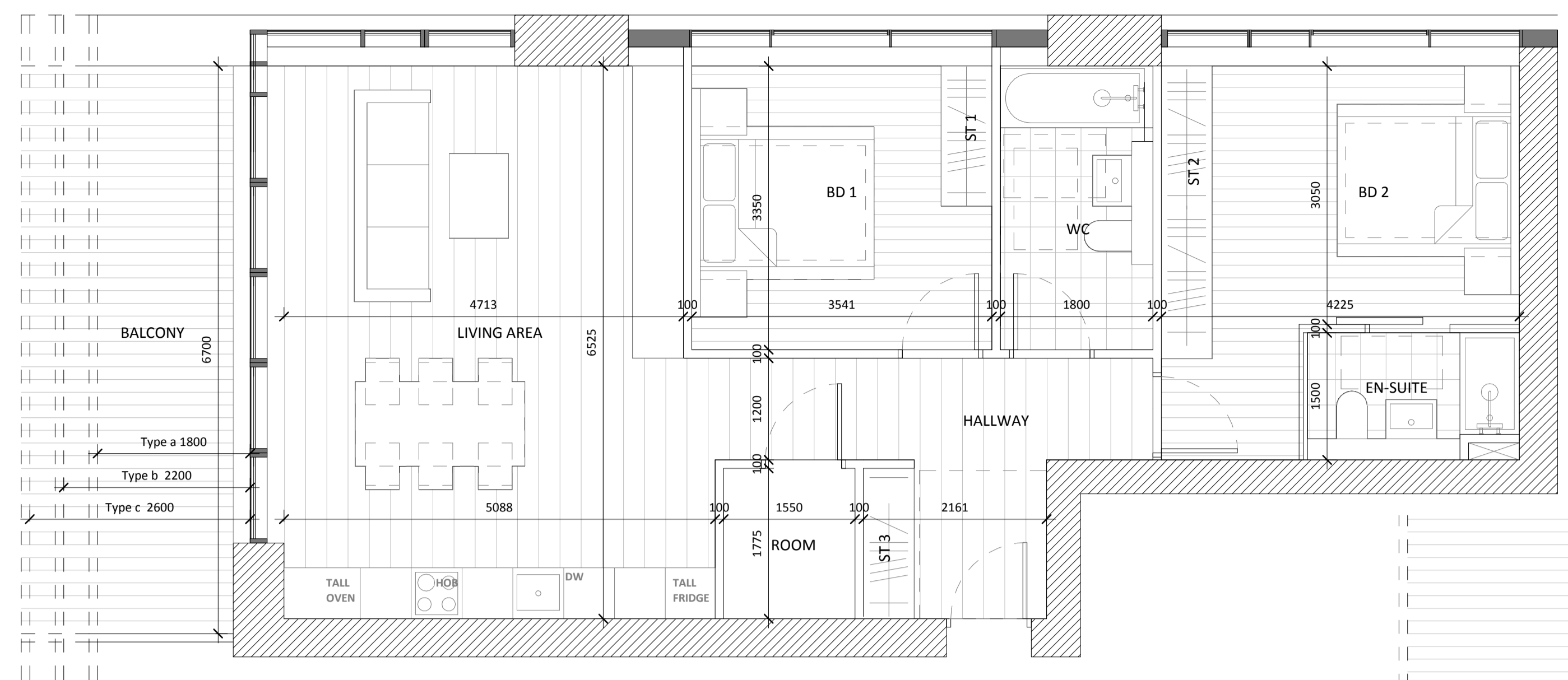
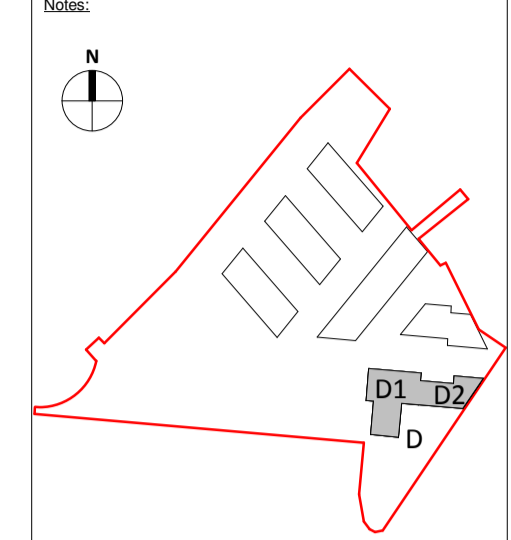


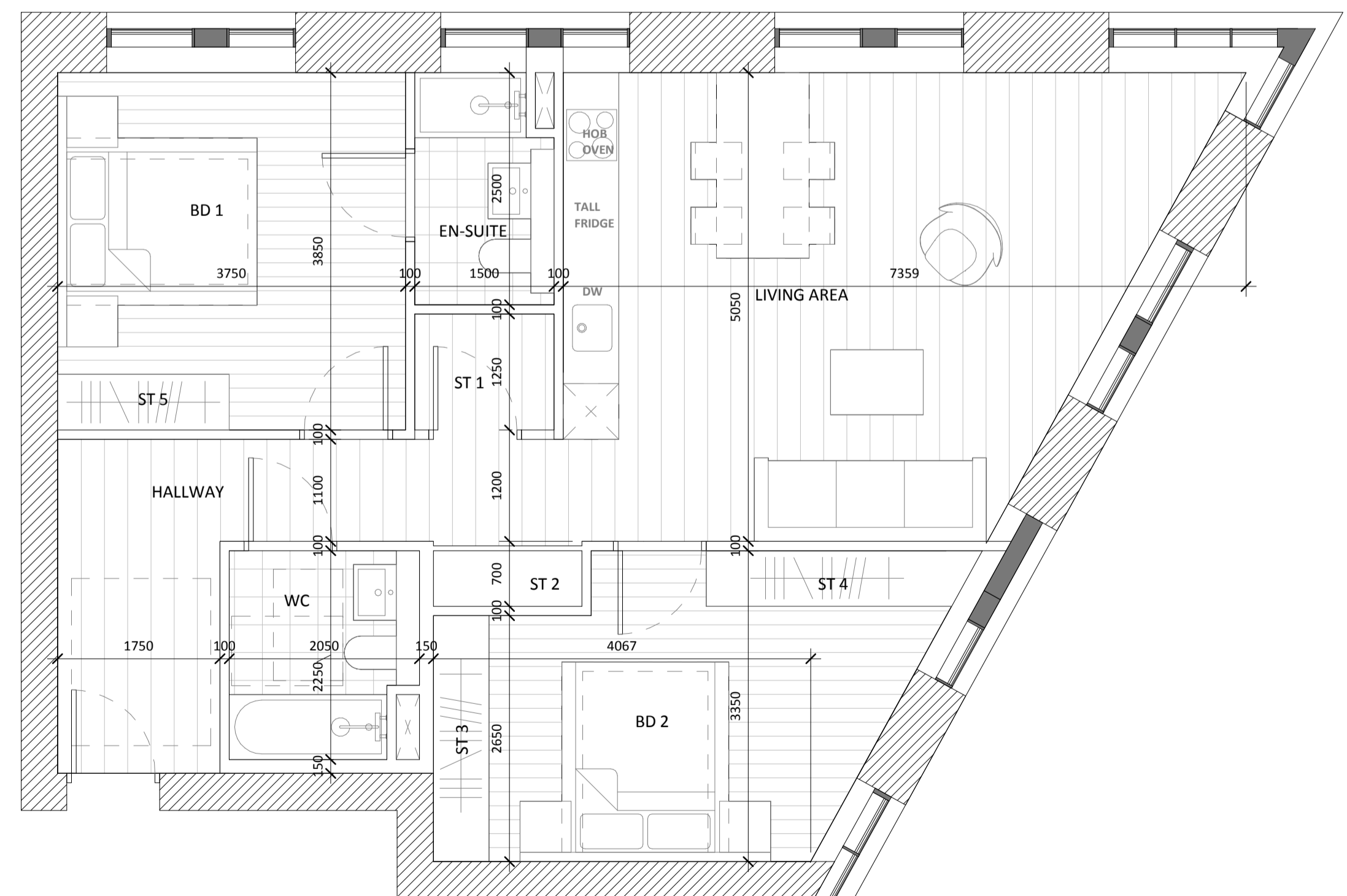
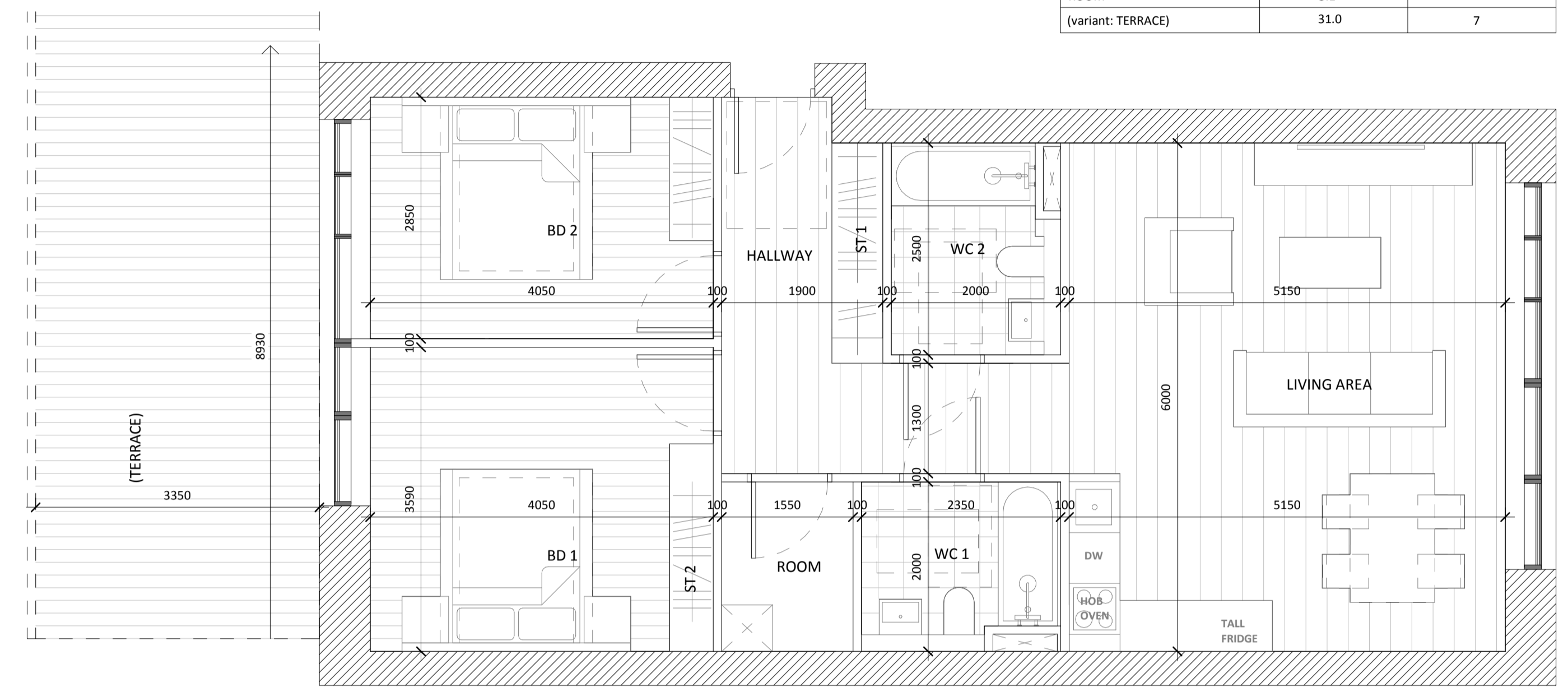
All dimensions to be checked on site. Figured dimensions take preference over scaled dimensions. Any errors or discrepancies to be reported to the Architects. This drawing may not be edited or modified by the recipient.

Copyright and ownership of this drawing is vested in RKD Architects, whose prior written consent is required for its use, reproduction or for publication to any third party. All rights reserved by the law of copyright and by international copyright conventions are reserved to RKD Architects and may be protected by court proceedings for damages and/or injunctions and costs. RKD Architects' Quality Management Systems are certified to ISO 9001:2015.

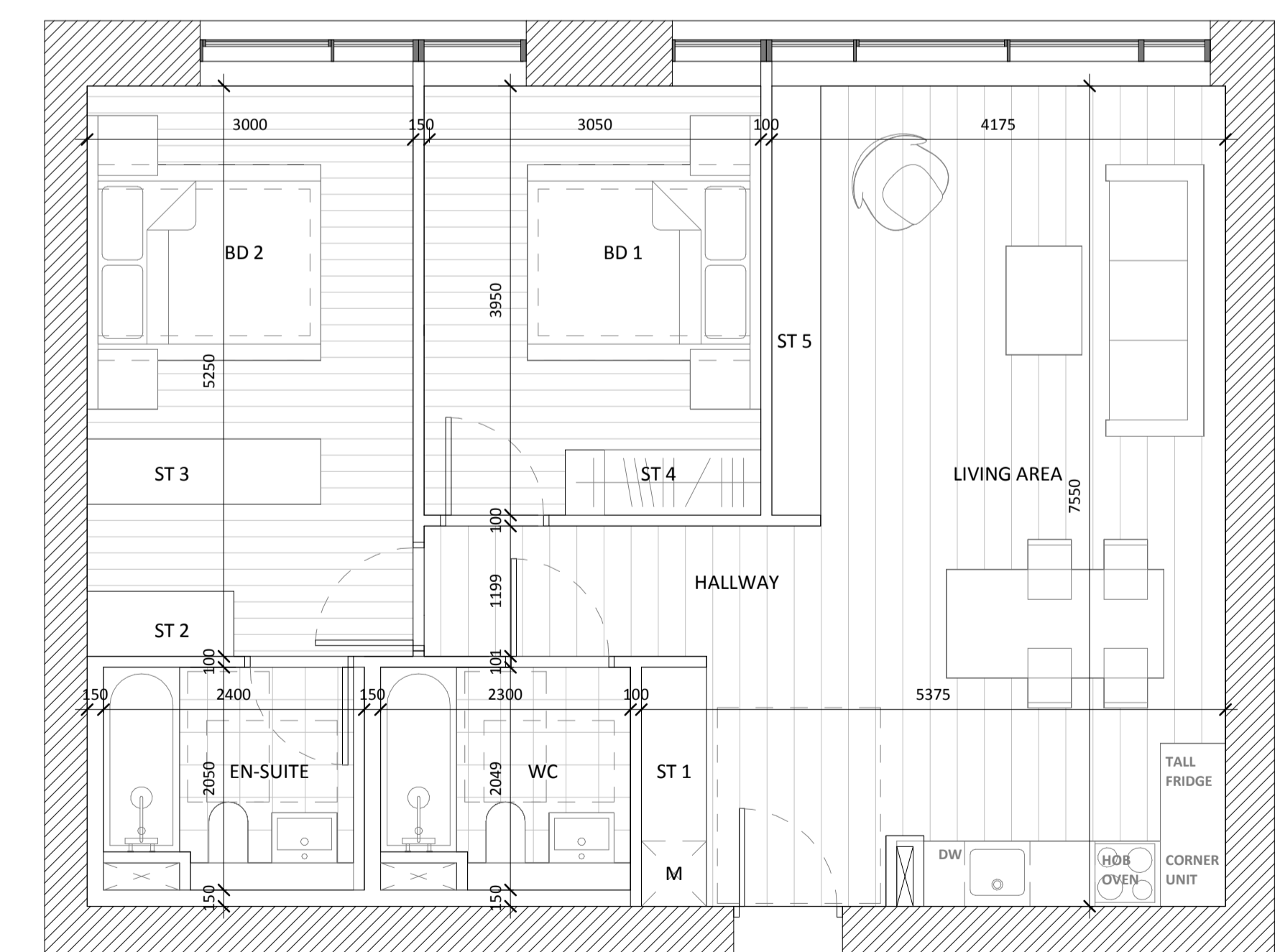


| 2B4P_D42            |                    |                    |
|---------------------|--------------------|--------------------|
|                     | AREA ACHIEVED (m2) | AREA REQUIRED (m2) |
| GROSS INTERNAL AREA | 83.8               | 73                 |
| NET INTERNAL AREA   | 80.2               | -                  |
| LIVING AREA         | 30.9               | 30                 |
| HALLWAY             | 9.4                | -                  |
| BEDROOM 1           | 13.3               | 13                 |
| BEDROOM 2           | 11.5               | 11.4               |
| WC 1                | 4.4                | -                  |
| WC 2                | 4.7                | -                  |
| STORAGE 1           | 1.6                | -                  |
| STORAGE 2           | 1.3                | 6                  |
| ROOM                | 3.1                | -                  |
| (variant: TERRACE)  | 31.0               | 7                  |

| 2B4P_D41            |                    |                    |
|---------------------|--------------------|--------------------|
|                     | AREA ACHIEVED (m2) | AREA REQUIRED (m2) |
| GROSS INTERNAL AREA | 84.7               | 73                 |
| NET INTERNAL AREA   | 82.0               | -                  |
| LIVING AREA         | 31.9               | 30                 |
| HALLWAY             | 9.1                | -                  |
| BEDROOM 1           | 11.9               | 11.4               |
| BEDROOM 2           | 13.4               | 13                 |
| WC                  | 6.0                | -                  |
| EN-SUITE            | 3.5                | -                  |
| STORAGE 1           | 1.1                | -                  |
| STORAGE 2           | 2.1                | 6                  |
| ROOM                | 2.8                | -                  |
| BALCONY TYPE a      | 10.4               | -                  |
| BALCONY TYPE b      | 13.1               | 7                  |
| BALCONY TYPE c      | 15.7               | -                  |



| 2B4P_D43            |                    |                    |           |                    |                    |
|---------------------|--------------------|--------------------|-----------|--------------------|--------------------|
|                     | AREA ACHIEVED (m2) | AREA REQUIRED (m2) |           | AREA ACHIEVED (m2) | AREA REQUIRED (m2) |
| GROSS INTERNAL AREA | 85.1               | 73                 | EN-SUITE  | 3.5                | -                  |
| NET INTERNAL AREA   | 80.9               | -                  | STORAGE 1 | 1.9                | -                  |
| LIVING AREA         | 29.8               | 30                 | STORAGE 2 | 1.0                | -                  |
| HALLWAY             | 10.4               | -                  | STORAGE 3 | 1.6                | 6                  |
| BEDROOM 1           | 13.3               | 13                 | STORAGE 4 | 1.7                | -                  |
| BEDROOM 2           | 12.3               | 11.4               | STORAGE 5 | 1.1                | -                  |
| WC                  | 4.3                | -                  |           |                    |                    |



| 2B4P_D44            |                    |                    |           |                    |                    |
|---------------------|--------------------|--------------------|-----------|--------------------|--------------------|
|                     | AREA ACHIEVED (m2) | AREA REQUIRED (m2) |           | AREA ACHIEVED (m2) | AREA REQUIRED (m2) |
| GROSS INTERNAL AREA | 79.1               | 73                 | WC        | 4.4                | -                  |
| NET INTERNAL AREA   | 74.6               | -                  | EN-SUITE  | 4.6                | -                  |
| LIVING AREA         | 31.6               | 30                 | STORAGE 1 | 1.0                | -                  |
| HALLWAY             | 3.1                | -                  | STORAGE 2 | 1.0                | -                  |
| BEDROOM 1           | 11.4               | 11.4               | STORAGE 3 | 1.3                | 6                  |
| BEDROOM 2           | 13.5               | 13                 | STORAGE 4 | 0.9                | -                  |
|                     |                    |                    | STORAGE 5 | 1.8                | -                  |

A OCT 2019 Issued for Planning Application Submission

| Rev. | Date | Description |
|------|------|-------------|
|      |      |             |

STATUS: **PLANNING**  
 PROJECT: The Connolly Quarter  
 PROJECT ADDRESS: Lands to the Rear of Connolly Station, Dublin 1  
 DWG TITLE: BLOCK D - APARTMENT TYPES (3 OF 5)  
 DWG NO.: 18135-ARROW-D-ZZ-DR-A-1512  
 REV. PROJECT NO. SCALE  
 A 18135 1 : 50  
 DATE JUN 19 DRN ILA CHK UR

