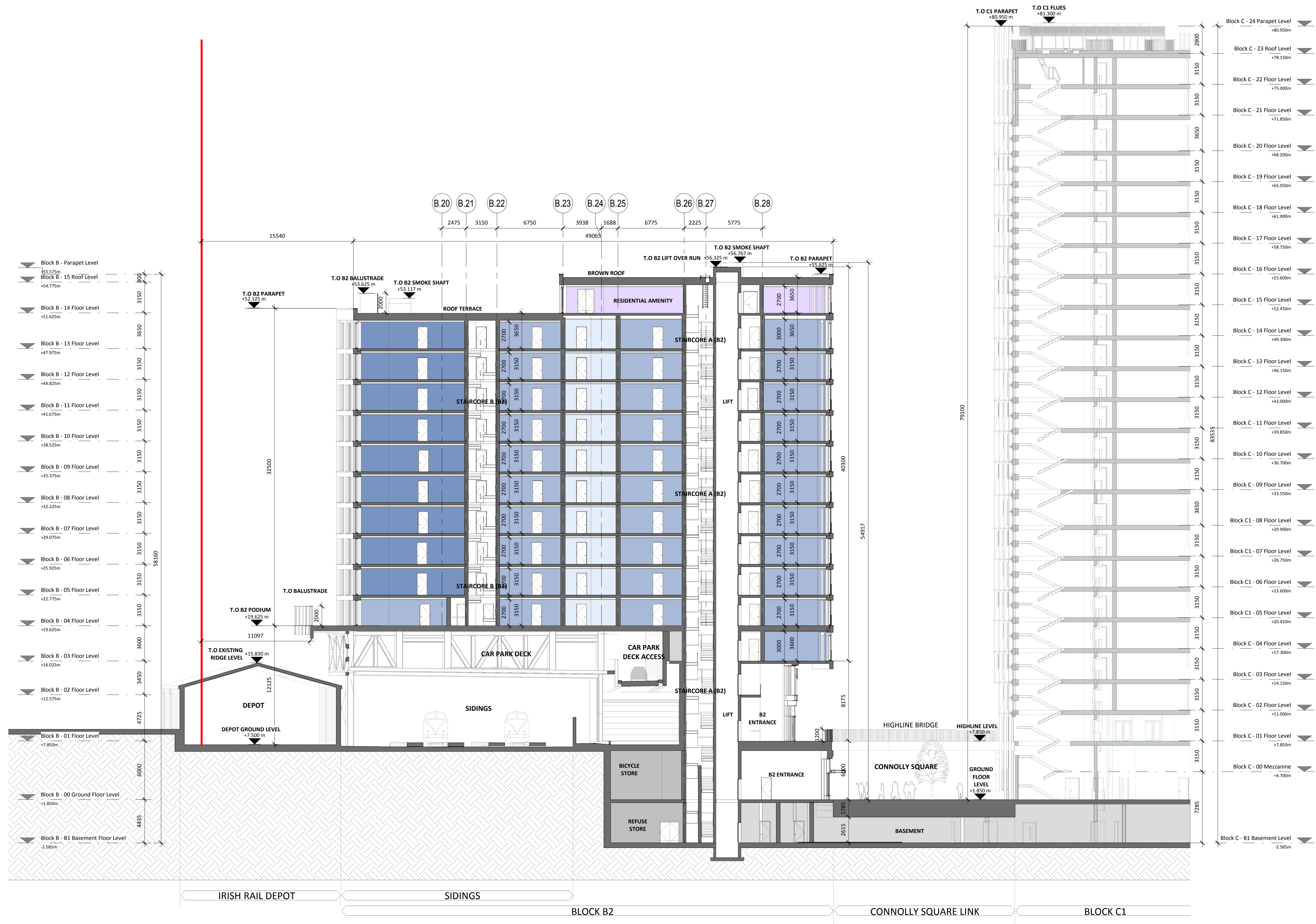


Notes:
 All levels shown are to the Irish Transverse Mercator (ITM) and are displayed in meters (m). All levels shown relate to the Malin Head datum. All dimensions shown in millimeters (mm).
 Symbol indicates top of floor level and relates to Malin Head datum.

| USE | |
|-----|--------------------------------|
| | STUDIO APARTMENT |
| | 1 BED APARTMENT |
| | 2 BED APARTMENT |
| | 3 BED APARTMENT |
| | INTERNAL RESIDENTIAL AMENITIES |
| | RETAIL |
| | COMMUNITY |
| | ANCILLARY USE |



A-A BLOCK B - SECTION A-A
 1 : 200

| Rev. | Date | Description |
|------|----------|--|
| A | OCT 2019 | Issued for Planning Application Submission |

STATUS PLANNING
PROJECT THE CONNOLLY QUARTER
PROJECT ADDRESS Lands to the Rear of Connolly Station, Dublin 1
DWG TITLE BLOCK B - SECTION A-A
DWG NO 18135-RKD-B-ZZ-DR-A-1201

| REV. | PROJECT NO. | SCALE |
|------|-------------|---------|
| A | 18135 | 1 : 200 |

RKD
 59 Northumberland Rd
 Ballsbridge, Dublin 4
 D04 W P96, Ireland
 +353 1 668 1000
 info@rkda.ie
 rkda.ie

ARROW
 Name: Farinagade 13, 41 m
 DK-1364 Copenhagen K
 Denmark
 +45 4236 2860
 info@arrowarchitects.com
 www.arrowarchitects.com