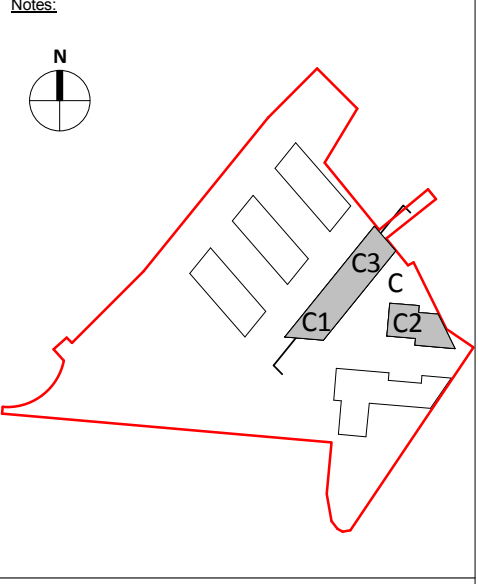


Copyright and ownership of this drawing is vested in RKD Architects, whose prior written consent is required for its use, reproduction or for publication to any third party. All rights reserved by the law of copyright and by international copyright conventions are reserved to RKD Architects and may be protected by court proceedings for damages and/or injunctions and costs.
 RKD Architects' Quality Management Systems are certified to ISO 9001:2015.



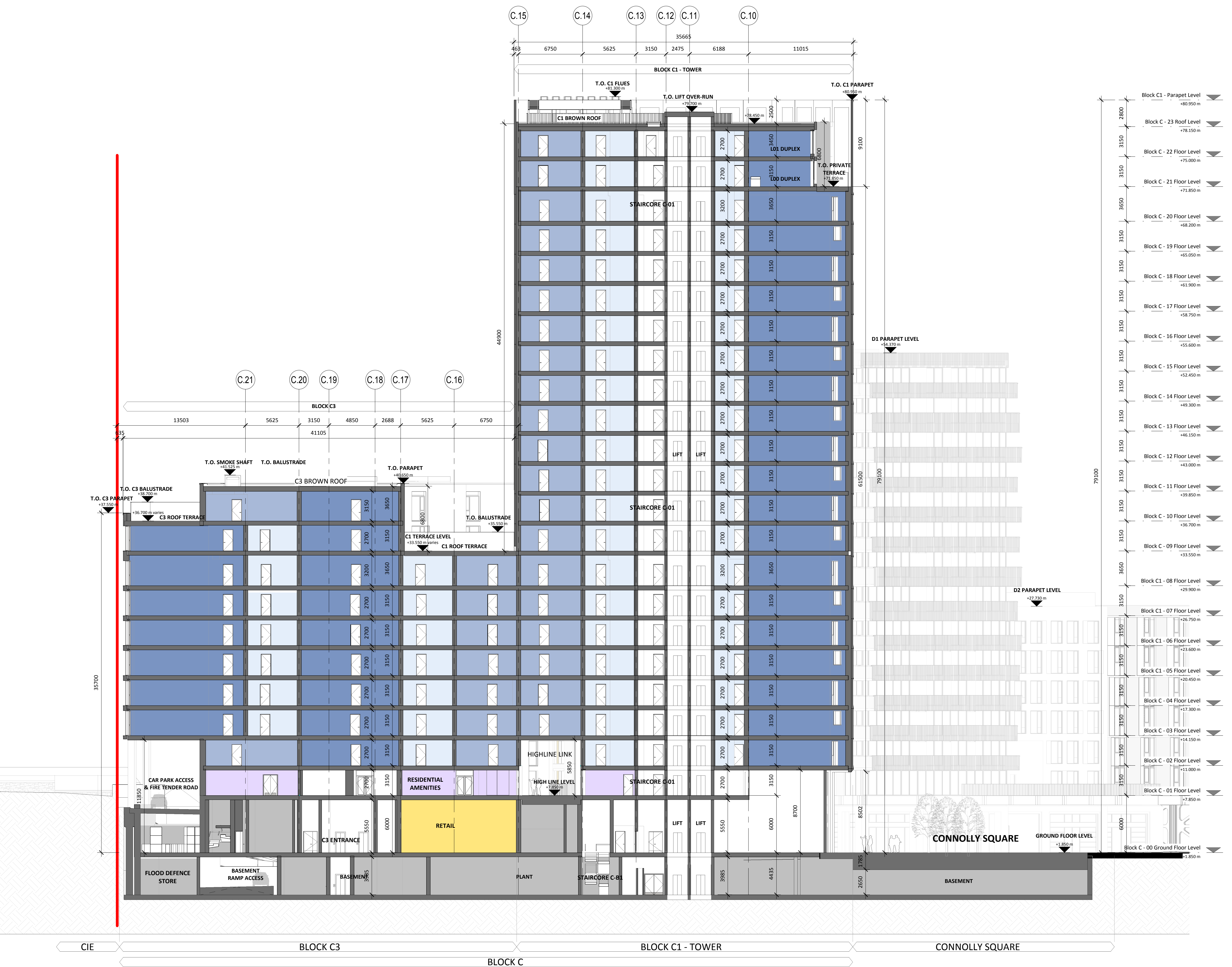
Notes:
 All levels shown are to the Irish Transverse Mercator (ITM) and are displayed in meters (m). All levels shown relate to the Malin Head datum. All dimensions shown in millimeters (mm).
 Symbol indicates top of floor level and relates to Malin Head datum

USE	
[Light Blue Box]	STUDIO APARTMENT
[Medium Blue Box]	1 BED APARTMENT
[Dark Blue Box]	2 BED APARTMENT
[Blue Box]	3 BED APARTMENT
[Purple Box]	INTERNAL RESIDENTIAL AMENITIES
[Yellow Box]	RETAIL
[Green Box]	COMMUNITY
[Grey Box]	ANCILLARY USE

Rev.	Date	Description
A	OCT 2019	Issued for Planning Application Submission

STATUS PLANNING		
PROJECT THE CONNOLLY QUARTER		
PROJECT ADDRESS Lands to the Rear of Connolly Station, Dublin 1		
DWG TITLE BLOCK C SECTION A-A		
DWG NO. 18135-RKD-C-ZZ-DR-A-1203		

REV.	PROJECT NO.	SCALE
A	18135	1 : 200



A-A BLOCK C - SECTION A-A
 1 : 200