

Copyright and ownership of this drawing is vested in RKD Architects, whose prior written consent is required for its use, reproduction or for publication to any third party. All rights reserved by the law of copyright and by international copyright conventions are reserved to RKD Architects and may be protected by court proceedings for damages and/or injunctions and costs.
 RKD Architects' Quality Management Systems are certified to ISO 9001:2015.

Notes:

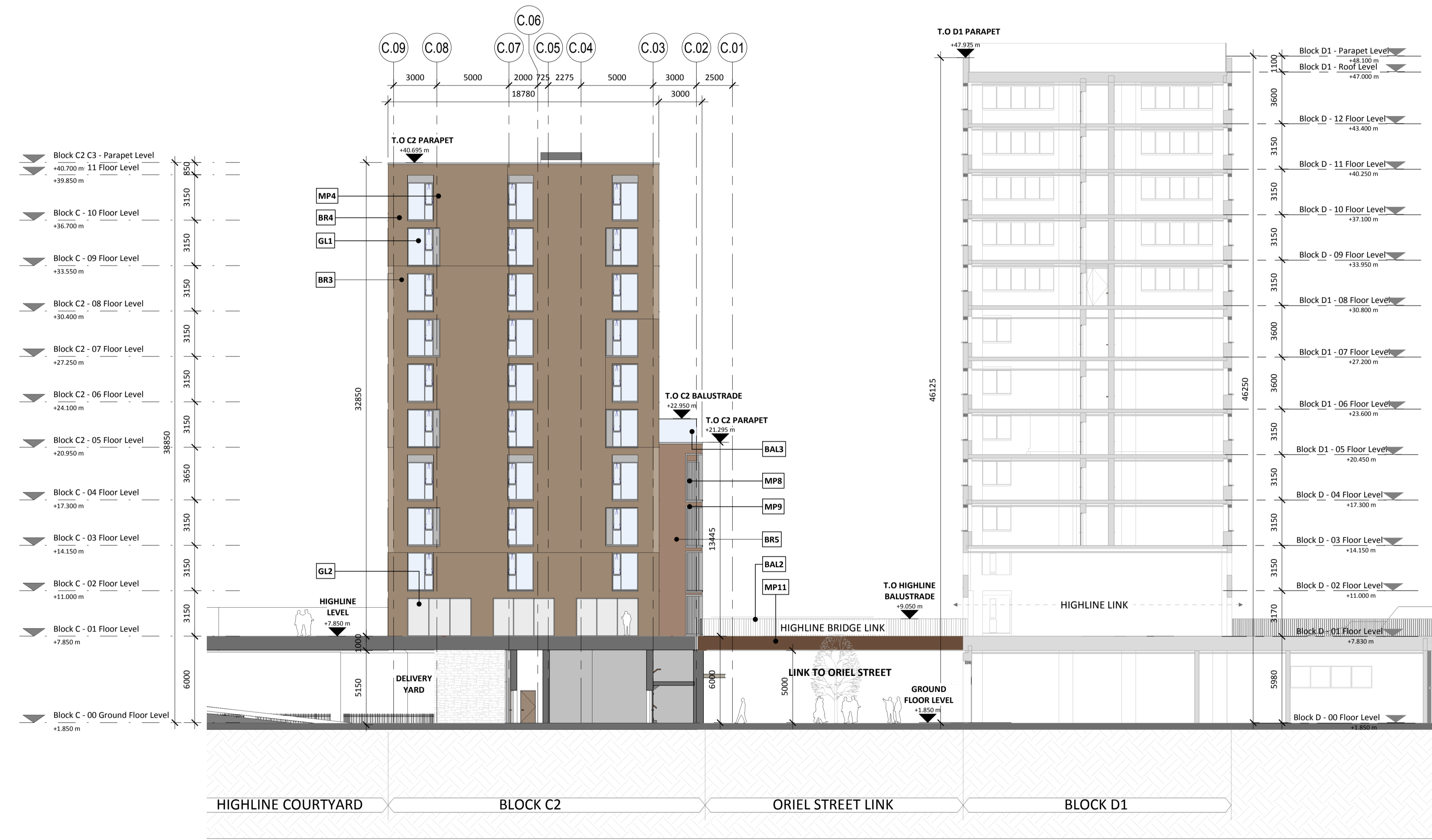
All levels shown are to the Irish Transverse Mercator (ITM) and are displayed in meters (m). All levels shown relate to the Malin Head datum. All dimensions shown in millimeters (mm)

Symbol indicates top of floor level and relates to Malin Head datum

— SITE BOUNDARY

MATERIAL FINISHES

BRICKWORK	
BR1	LIGHT GREY BRICK
BR2	LIGHT GREY RIBBED BRICKWORK
BR3	BUFF BRICKWORK
BR4	BUFF RIBBED BRICKWORK
BR5	RED BRICKWORK
BR6	DARK GREY BRICKWORK
BR7	DARK GREY RIBBED BRICKWORK
BR8	WHITE/ GREY BRICKWORK
BR9	WHITE/ GREY RIBBED BRICKWORK
METAL CLADDING	
MP1	LIGHT GREY METAL FIGURE PANEL
MP2	DARK GREY METAL FIGURE PANEL
MP3	DARK GREY STEEL TRUSS SYSTEM
MP4	DARK GREY METAL PANEL
MP5	ALUMINIUM MESH METAL PANEL
MP6	PATTERNED METAL PANEL
MP7	WHITE ALUMINIUM CLADDING
MP8	GREY RIBBED METAL PANEL
MP9	LIGHT GREY METAL REVEAL
MP10	CREAM METAL PANEL
MP11	CORTEN STEEL HIGHLINE BEAM
MP12	REMOVABLE BESPOKE METAL SCREEN
GLAZING	
GL1	WINDOW GLAZING SYSTEM
GL2	CURTAIN WALL GLAZING SYSTEM
BALUSTRADE	
BAL1	STEEL PODIUM BALUSTRADE
BAL2	STEEL/ CORTEN HIGHLINE BALUSTRADE
BAL3	GLAZED SCREEN - TERRACE
BAL4	DARK GREY STEEL BALUSTRADE
BAL5	GLAZED SCREEN - PODIUM
BAL6	GLAZED BALUSTRADE - APARTMENT



C-C BLOCK C - SECTION C-C
 1 : 200

Rev.	Date	Description
A	OCT 2019	Issued for Planning Application Submission

STATUS: **PLANNING**

PROJECT: THE CONNOLLY QUARTER

PROJECT ADDRESS: Lands to the Rear of Connolly Station, Dublin 1

DWG TITLE: BLOCK C SECTION C-C

DWG NO: 18135-RKD-C-ZZ-DR-A-1205

REV.	PROJECT NO.	SCALE
A	18135	1 : 200

DATE: JUN 2019 DRN: CNAB CHK: CS

58 Northumberland Rd
 Ballsbridge, Dublin 4
 D04 W9P6, Ireland

+353 1 606 1055
 info@rkd.ie
 rkd.ie

Name: Farinagade 13, 41 m
 DK-1364 Copenhagen K
 Denmark

+45 4226 2860
 info@arrowarchitects.com
 www.arrowarchitects.com