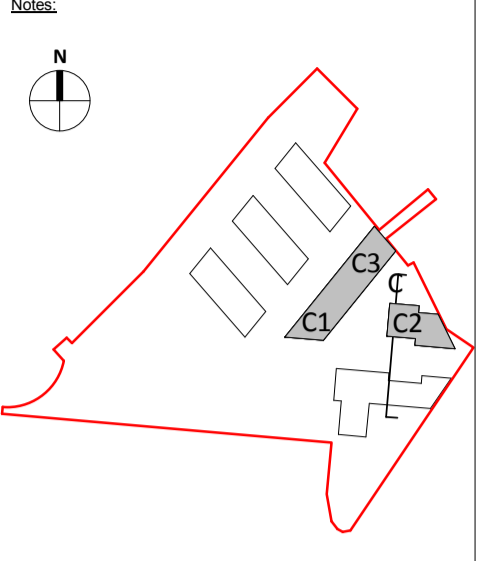


Copyright and ownership of this drawing is vested in RKD Architects, whose prior written consent is required for its use, reproduction or for publication to any third party. All rights reserved by the law of copyright and by international copyright conventions are reserved to RKD Architects and may be protected by court proceedings for damages and/or injunctions and costs.  
RKD Architects: Quality Management Systems are certified to ISO 9001:2015.



**Notes:**  
All levels shown are to the Irish Transverse Mercator (ITM) and are displayed in meters (m). All levels shown relate to the Malin Head datum. All dimensions shown in millimeters (mm).  
Symbol indicates top of floor level and relates to Malin Head datum

USE	
	STUDIO APARTMENT
	1 BED APARTMENT
	2 BED APARTMENT
	3 BED APARTMENT
	INTERNAL RESIDENTIAL AMENITIES
	RETAIL
	COMMUNITY
	ANCILLARY USE

Rev.	Date	Description
A	OCT 2019	Issued for Planning Application Submission

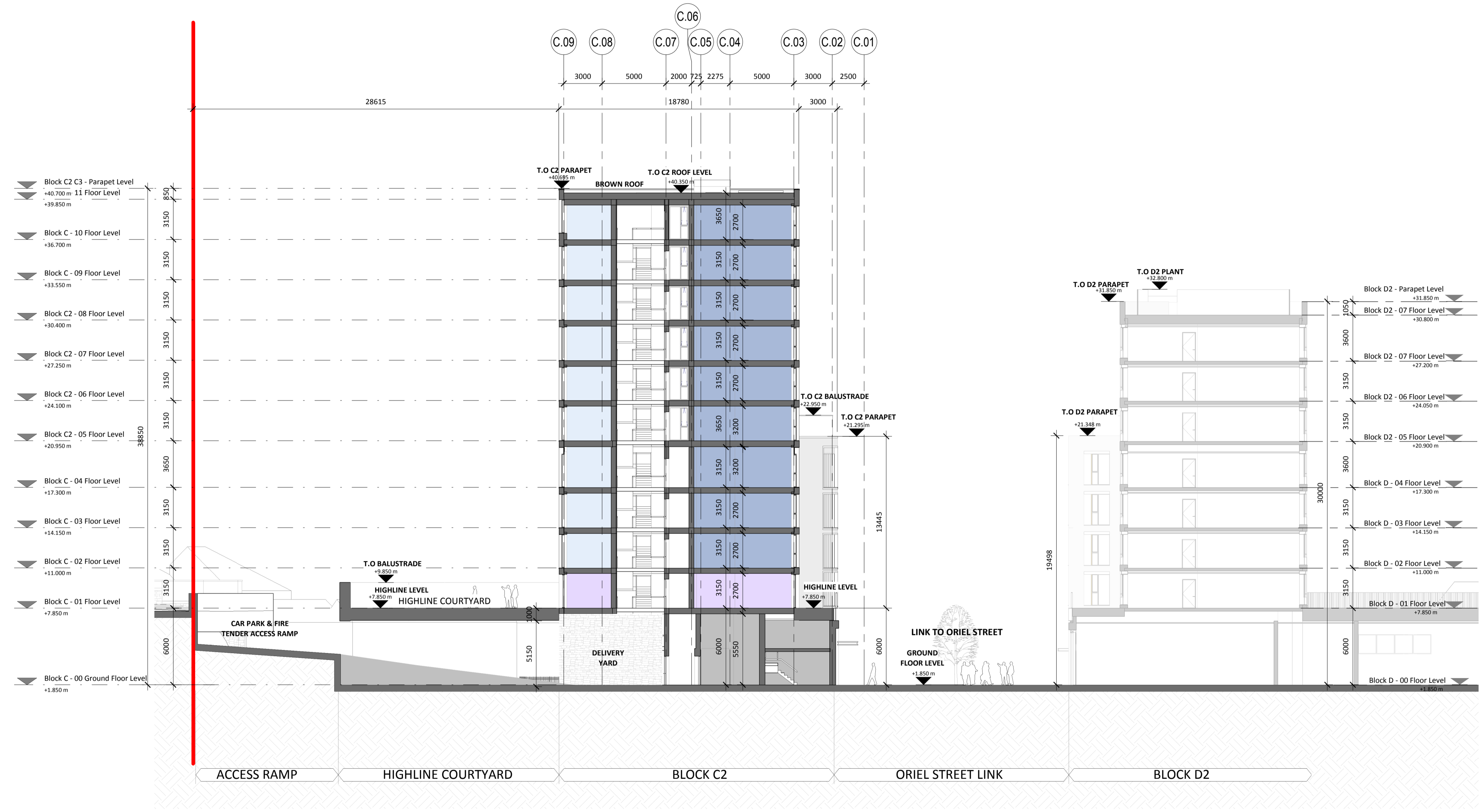
STATUS: **PLANNING**  
PROJECT: THE CONNOLLY QUARTER  
PROJECT ADDRESS: Lands to the Rear of Connolly Station, Dublin 1  
DWG TITLE: BLOCK C SECTION D-D  
DWG NO: 18135-RKD-C-ZZ-DR-A-1206

REV.	PROJECT NO.	SCALE
A	18135	1 : 200

DATE: JUN 2019    DRN: CNAB    CHK: CS

**RKD**  
58 Northumberland Rd  
Ballsbridge, Dublin 4  
D04 W P95, Ireland    +353 1 668 1055  
info@rkd.ie    rkd.ie

**ARROW**  
Name: Farinagade 13, 41 m  
DK-1364 Copenhagen K  
Denmark    +45 4226 2860  
info@arrowarchitects.com  
www.arrowarchitects.com



**D-D** **BLOCK C - SECTION D-D**  
1 : 200