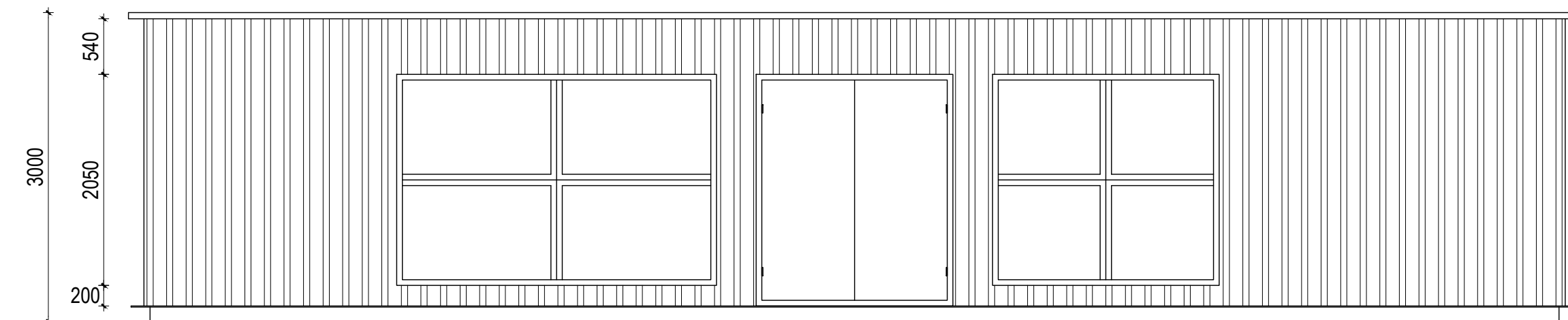
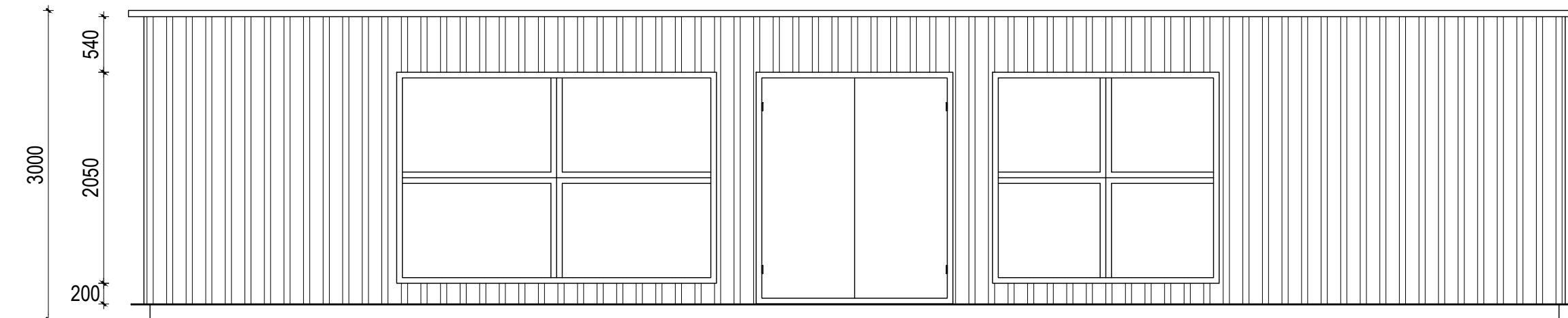


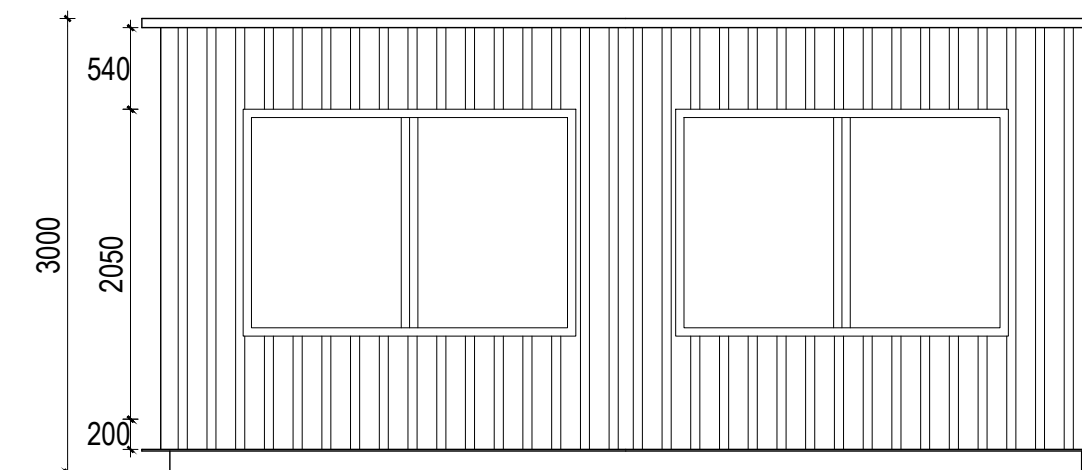
# MARKETING SUITE



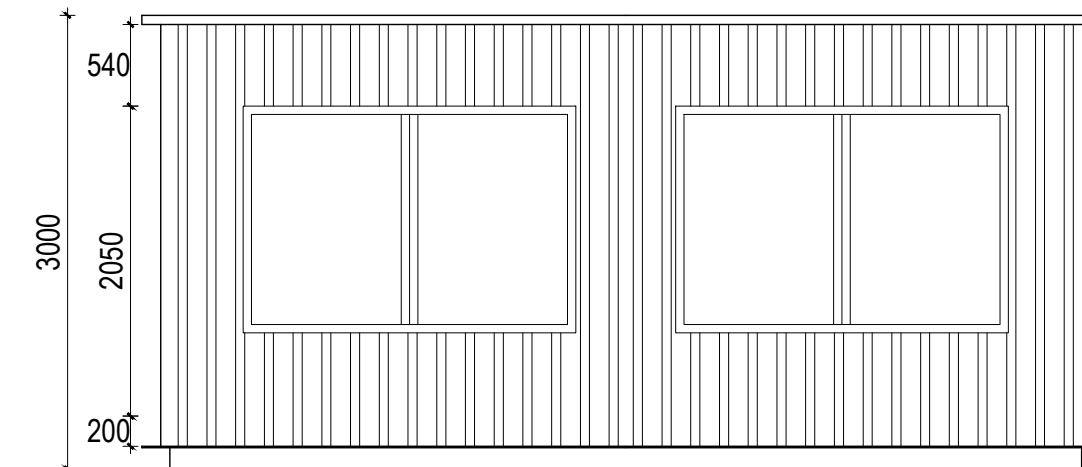
**Front Elevation**



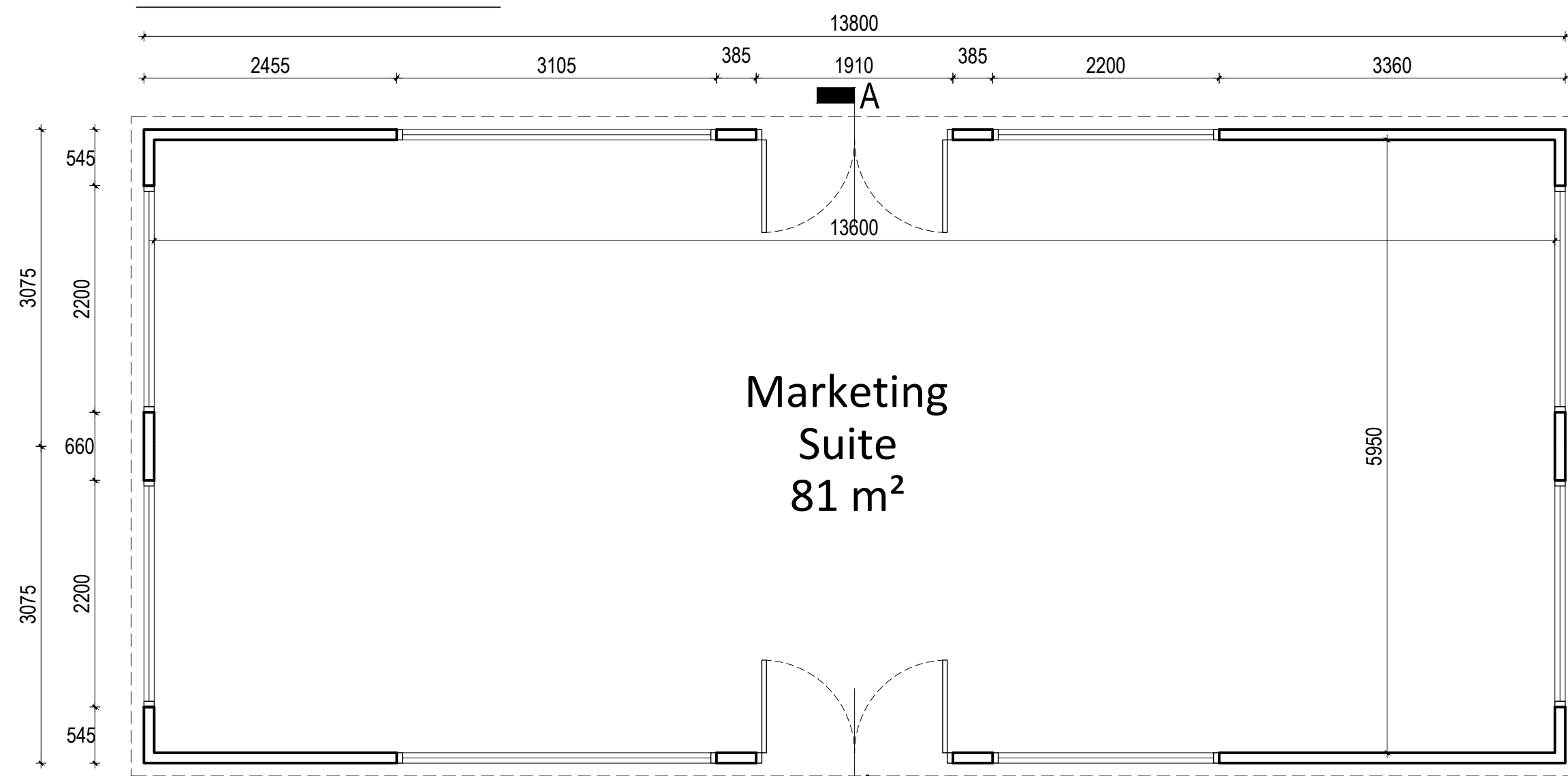
**Rear Elevation**



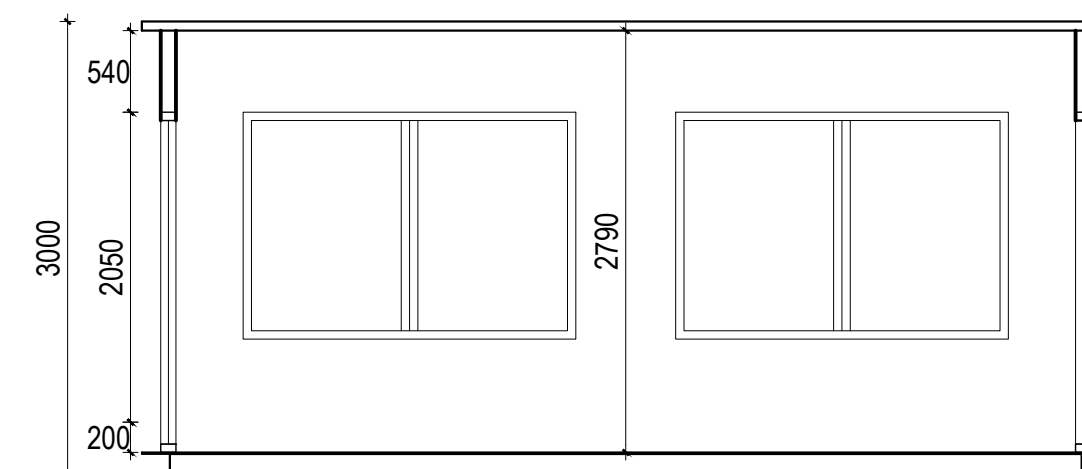
**Side Elevation**



**Side Elevation**

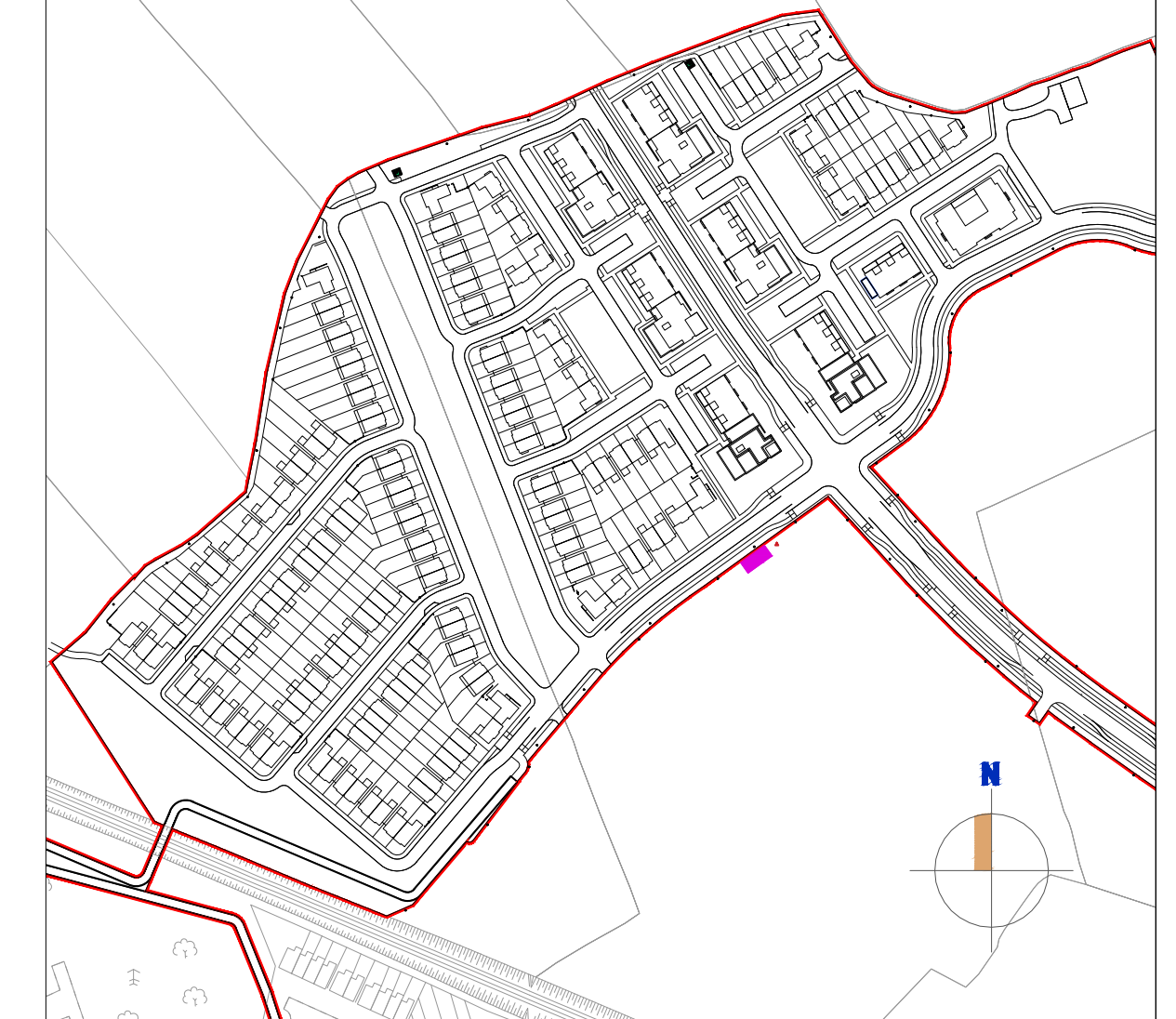


**Floor Plan**



**Section A-A**

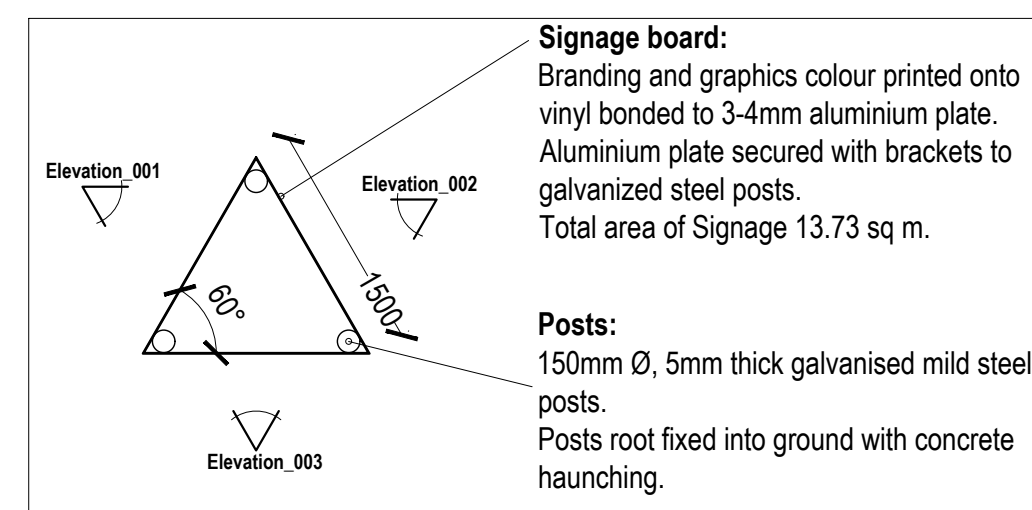
**NOTE:**  
Do not scale from this drawing, written dimensions only to be used.  
This drawing is for planning purposes only & not for construction.  
Levels shown relate to O.S. Malin Head Datum.  
DDA Architects Ltd. retain copyright and ownership of this design which is not transferable.



■ **MARKETING SUITE**  
▲ **MARKETING SIGNAGE**

# MARKETING SIGNAGE

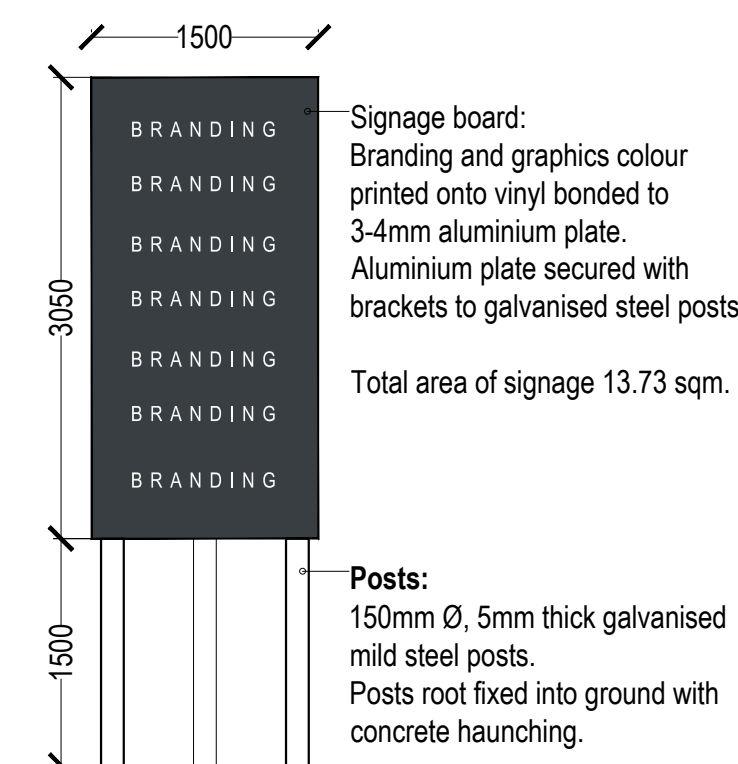
- NOTES:**
- All steel to be hot dip galvanized.
  - All aluminium to be mill finish.
  - All brackets and fixings to be hot dip galvanized.



**Plan**

**Signage board:**  
Branding and graphics colour printed onto vinyl bonded to 3-4mm aluminium plate.  
Aluminium plate secured with brackets to galvanized steel posts.  
Total area of Signage 13.73 sq m.

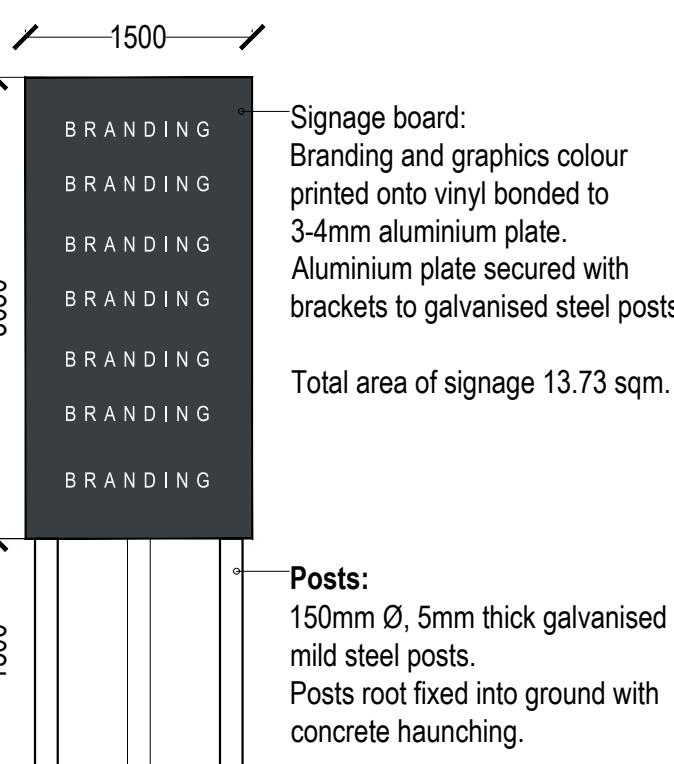
**Posts:**  
150mm Ø, 5mm thick galvanized mild steel posts.  
Posts root fixed into ground with concrete haunching.



**Elevation 001**

**Signage board:**  
Branding and graphics colour printed onto vinyl bonded to 3-4mm aluminium plate.  
Aluminium plate secured with brackets to galvanized steel posts.  
Total area of signage 13.73 sqm.

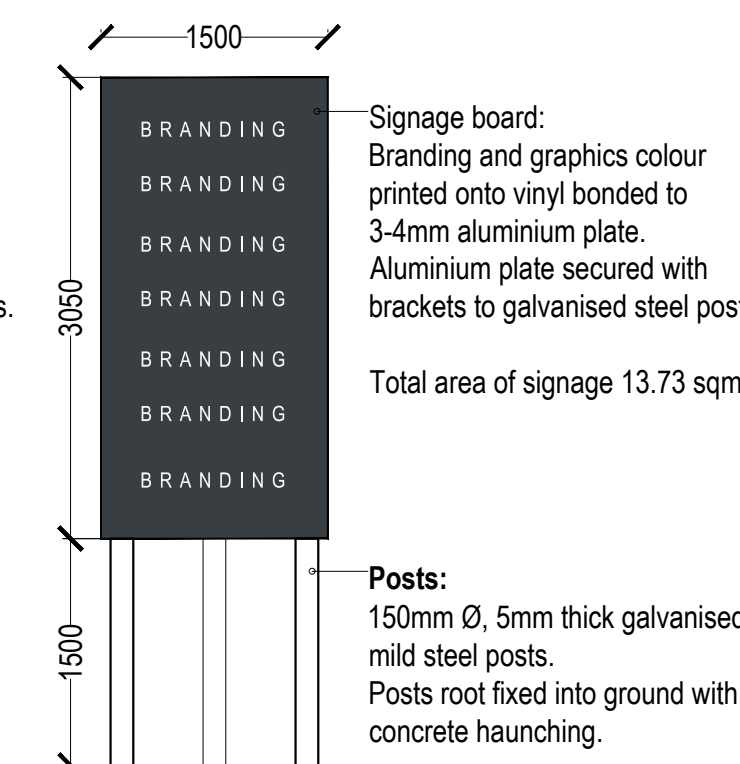
**Posts:**  
150mm Ø, 5mm thick galvanized mild steel posts.  
Posts root fixed into ground with concrete haunching.



**Elevation 001**

**Signage board:**  
Branding and graphics colour printed onto vinyl bonded to 3-4mm aluminium plate.  
Aluminium plate secured with brackets to galvanized steel posts.  
Total area of signage 13.73 sqm.

**Posts:**  
150mm Ø, 5mm thick galvanized mild steel posts.  
Posts root fixed into ground with concrete haunching.



**Elevation 001**

**Signage board:**  
Branding and graphics colour printed onto vinyl bonded to 3-4mm aluminium plate.  
Aluminium plate secured with brackets to galvanized steel posts.  
Total area of signage 13.73 sqm.

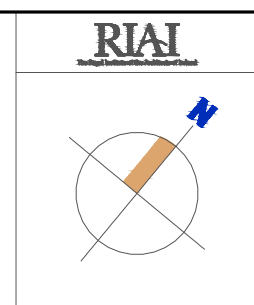
**Posts:**  
150mm Ø, 5mm thick galvanized mild steel posts.  
Posts root fixed into ground with concrete haunching.

REV	DATE	BY	DATE	BY	DATE
-	-	-	-	-	-
-	-	-	-	-	-
-	-	-	-	-	-
-	-	-	-	-	-
-	-	-	-	-	-
-	-	-	-	-	-
-	-	-	-	-	-
-	-	-	-	-	-
-	-	-	-	-	-
-	-	-	-	-	-

REV	DATE	BY	DATE	BY	DATE
-	-	-	-	-	-
-	-	-	-	-	-
-	-	-	-	-	-
-	-	-	-	-	-
-	-	-	-	-	-
-	-	-	-	-	-
-	-	-	-	-	-
-	-	-	-	-	-
-	-	-	-	-	-
-	-	-	-	-	-

**NOTE:**  
Do not scale from this drawing, written dimensions only to be used.  
Check all dimensions on site before work commences.  
Levels shown are for information purposes only and do not relate to O.S. Datum.  
For actual O.S. Datum Floor Levels refer to Site Plan.

**DDA DUAIGNAN DOOLEY**  
ARCHITECTS AND PLANNING CONSULTANTS  
62 BRIGHTON SQUARE, DUBLIN 6  
TEL: 00 353 (1) 490 0499  
EMAIL: info@ddaarch.ie  
WEB: www.ddaarch.ie



<small>THIS DRAWING IS COPYRIGHT ©</small> <small>FIXED DIMENSIONS ONLY TO BE USED</small>		STATUS: <b>PLANNING</b>
CLIENT: SHANNON HOMES DROGHEDA LTD	PROJECT TITLE: COLD WEST SHD DROGHEDA	CAD: PD
DRAWING TITLE: MARKETING SUITE & SIGNAGE	DRAWING NUMBER: 19-001-P-5.200	REV: -
DRAWN: MA	CDD: PD	DATE: OCT 2019
		SCALE: 1/50@A1; 1/100 @ A3