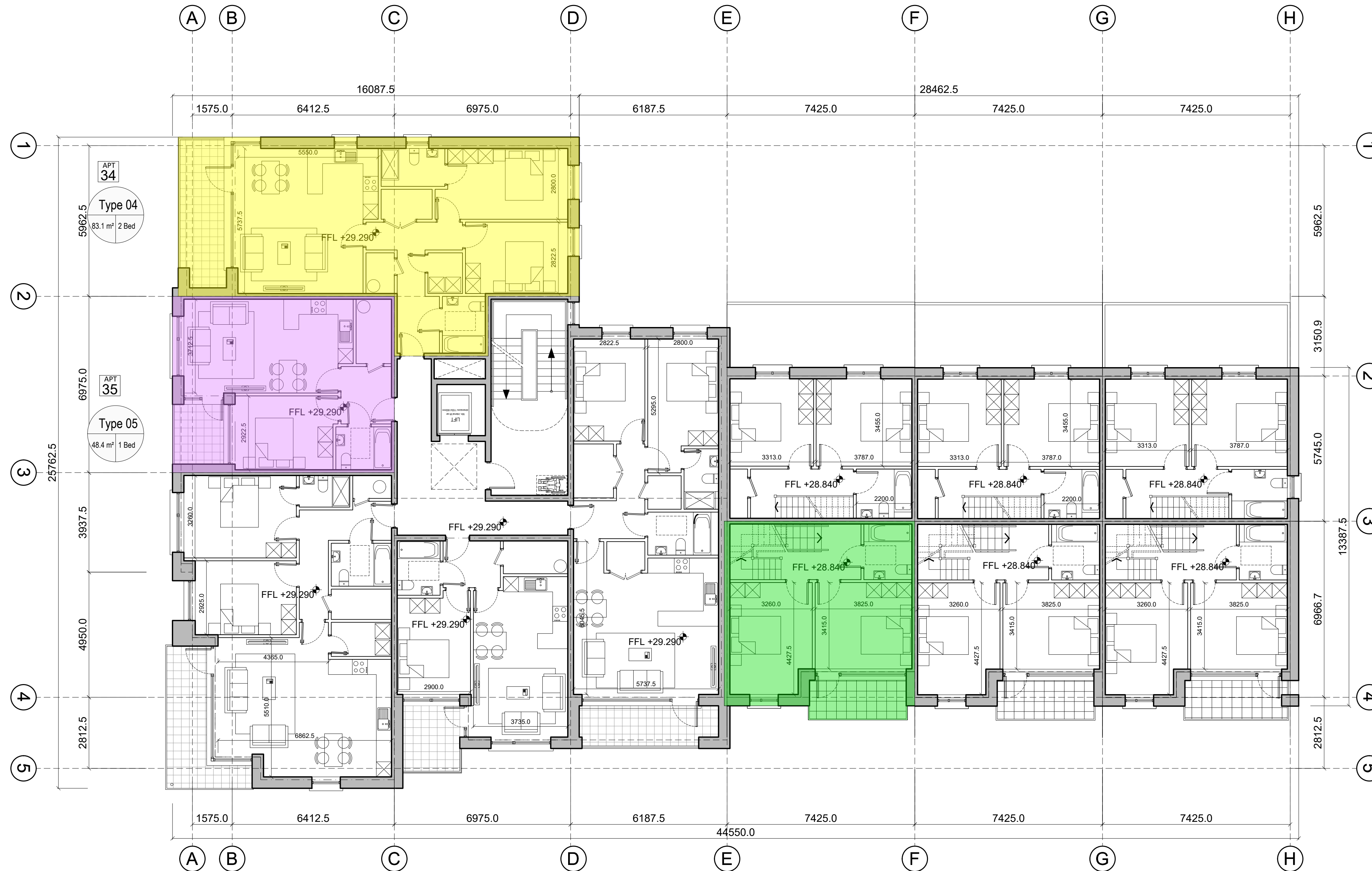
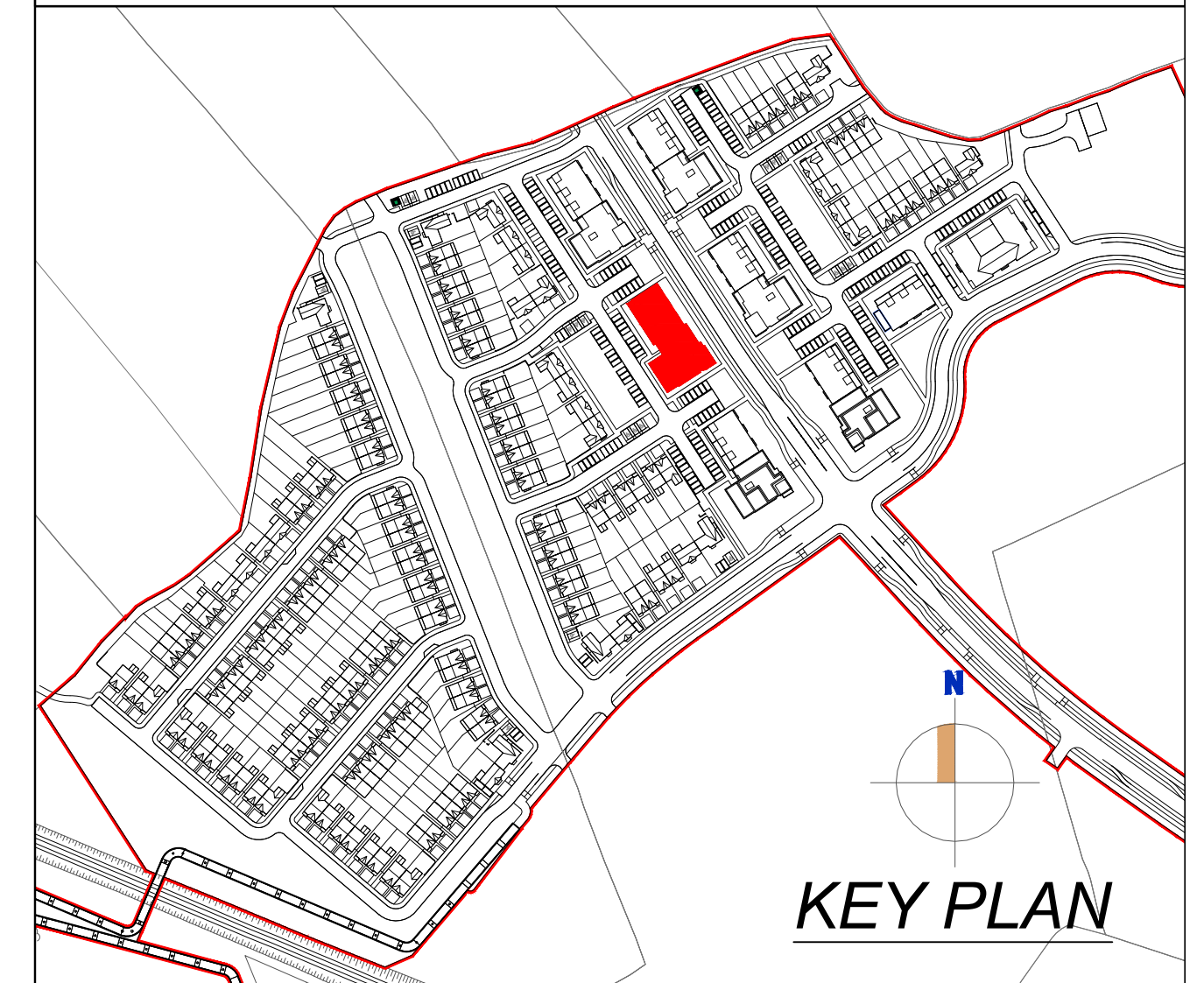


Block 2 - Part V

NOTE:
Do not scale from this drawing, written dimensions only to be used. This drawing is for planning purposes only & not for construction. Levels shown are for information purposes only & may not relate to O.S. Malin Head Datum. For actual O.S. Malin Head Datum always refer to the Site Layout Plan. DDA Architects Ltd. retain copyright and ownership of this design which is not transferable.

MATERIALS :

ROOF	SELECTED STANDING SEAM ROOF FINISH/ SEDUM ROOF
WALLS	SELECTED BRICK OR SELF COLOUR RENDERED BLOCK WORK, SELECTED STONE PANEL FINISH SELECTED ZINC COATED ALUMINIUM WALL PANEL.
WINDOWS	SELECTED U-PVC OR TIMBER DOUBLE GLAZED WINDOWS.
FRONT DOOR	SELECTED U-PVC OR TIMBER FINISH DOOR WITH DOUBLE GLAZED VISION PANELS.
RAIN WATER GOODS	U-PVC OR TIMBER FASCIA AND SOFFIT WITH UPVC OR ALUMINIUM POWDER COATED GUTTERS & DOWNPIPES
CANOPY	ALUMINIUM CLAD CANOPY.
COPINGS, WINDOW SURROUNDS & CILLS	CONCRETE CILLS WITH WRAP AROUND D.P.C. AND INSULATION BEHIND.



First Floor Plan

UNITS ALLOCATED FOR PART V

- 2 BED APT
- 1 BED APT
- 3 BED DUPLEX

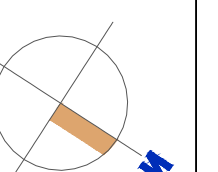
REV	DATE	DESCRIPTION	DRAWN

DDA DUIGAN DOOLEY
ARCHITECTS AND PLANNING CONSULTANTS

62 BRIGHTON SQUARE, DUBLIN 6

TEL : 00 353 (1) 490 0499
EMAIL : info@ddaarch.ie
WEB : www.ddaarch.ie

RIA



THIS DRAWING IS COPYRIGHT © FIGURES DIMENSIONS ONLY TO BE USED	STATUS: PLANNING	CD: PD
CLIENT: SHANNON HOMES DROGHEDA LTD	PROJECT TITLE: COLP WEST SHD DROGHEDA	REV: -
DRAWING TITLE: BLOCK 2 - PART V FIRST FLOOR PLAN	DRAWING NUMBER: 19-001-P-6.201	
DRAWN: MA	CD: PD	DATE: OCT 2019
		SCALE: 1:100@A1; 1:200@A3