

**SITE LIGHTING NOTES**

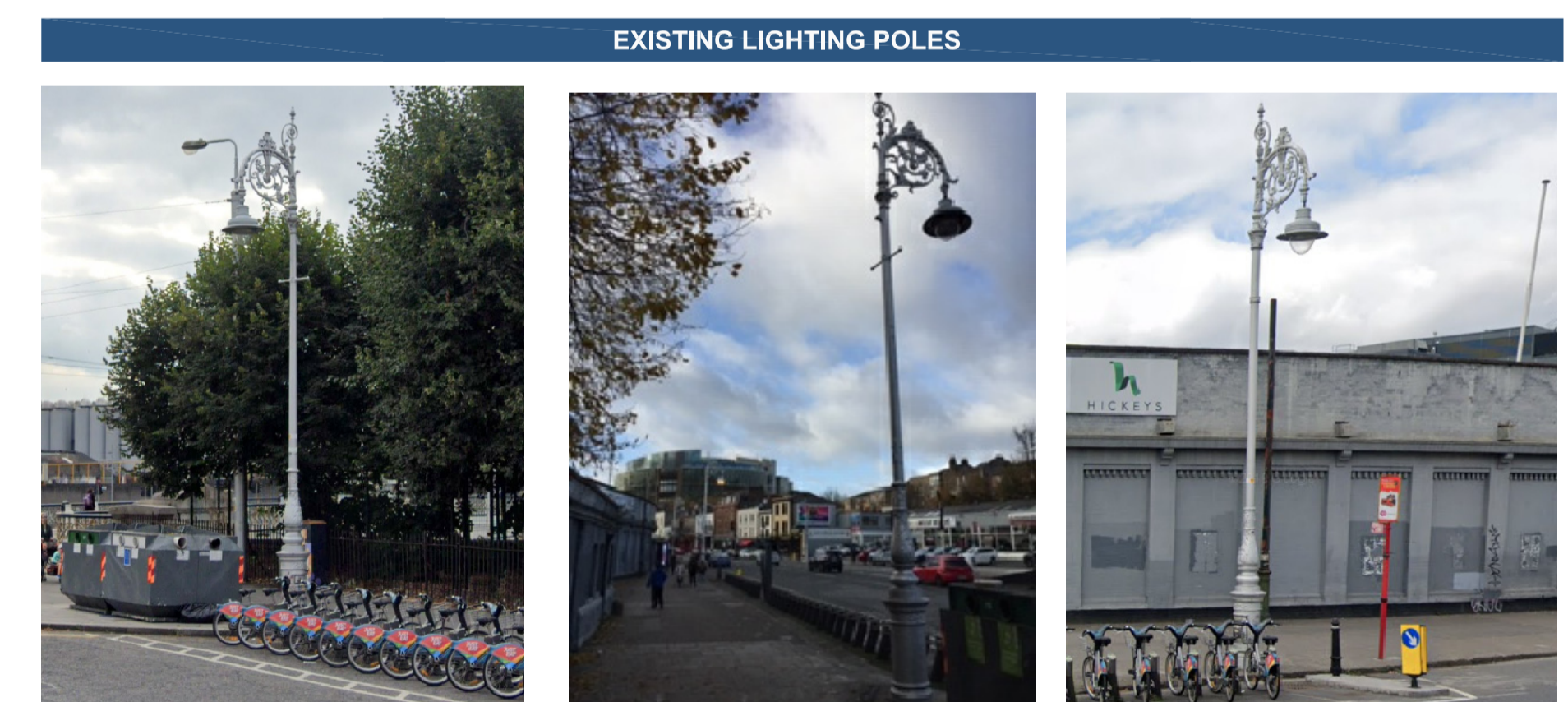
- 1.00 ALL CABLING TO EXTERNAL LIGHTING TO BE 6mm<sup>2</sup> CU/XLPE/SWA/PVC CONTAINED WITHIN PVC DUCTS.
- 2.00 THE ELECTRICAL CONTRACTOR SHALL, PRIOR TO THE INSTALLATION, VERIFY THE CAPACITY OF THE IN-GROUND DUCT NETWORK TO THE MAIN CONTRACTOR.

**SITE LIGHTING REFERENCE KEY**

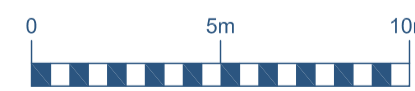
- LIGHTING CIRCUIT
- EX-LC-## ROOT MOUNTED MAST LED LUMINAIRE



EXISTING LIGHTING COLUMN TO BE RELOCATED. COLUMN TO BE SET BACK 600mm FROM KERB LINE TO ALLOW FOR BUS ALIGNMENT.



EXISTING LIGHTING POLES



STATUS	DATE	DESCRIPTION	DRN	ENG	APP	REV
S2	24.01.2020	PLANNING ISSUE	JL	DG	GP	P03
S2	11.12.2019	PLANNING ISSUE	JL	DG	GP	P02
S2	19.11.2019	PLANNING ISSUE	JL	DG	GP	P01

STATUS	DATE	DESCRIPTION	DRN	ENG	APP	REV
S2	24.01.2020	PLANNING ISSUE	JL	DG	GP	P03
S2	11.12.2019	PLANNING ISSUE	JL	DG	GP	P02
S2	19.11.2019	PLANNING ISSUE	JL	DG	GP	P01