

# Parkgate Street

Lighting Design Concept Report

268615-00

PGATE-ARUP-ZZ-XX-RP-YL-0001

This report takes into account the particular instructions and requirements of our client.

It is not intended for and should not be relied upon by any third party and no responsibility is undertaken to any third party.

Job number 268615-00


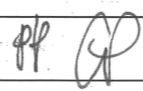
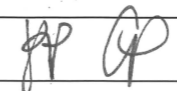
**Ove Arup & Partners Ireland Ltd**

**Arup**  
50 Ringsend Road  
Dublin 4  
D04 T6X0  
Ireland  
[www.arup.com](http://www.arup.com)

*Lighting @*  
**ARUP**

**Document verification**

**ARUP**

<b>Job title</b>		42A Parkgate Street, Dublin 8		<b>Job number</b>	
				268615-00	
<b>Document title</b>		Lighting Design Concept Report		<b>File reference</b>	
<b>Document ref</b>		Lighting Design Concept Report			
<b>Revision</b>	<b>Date</b>	<b>Filename</b>	268615-00_Lighting Concept Design.pdf		
Issue 1	20 Dec 2019	<b>Description</b>	Issue for Planning		
			Prepared by	Checked by	Approved by
		Name	Camilla Parrella	James Duff	James Duff
		Signature			
		<b>Filename</b>			
		<b>Description</b>			
			Prepared by	Checked by	Approved by
		Name			
		Signature			
		<b>Filename</b>			
		<b>Description</b>			
			Prepared by	Checked by	Approved by
		Name			
		Signature			
		<b>Filename</b>			
		<b>Description</b>			
			Prepared by	Checked by	Approved by
		Name			
		Signature			
<b>Issue Document verification with document</b>					<input checked="" type="checkbox"/>

# Site Survey - A Night Walk

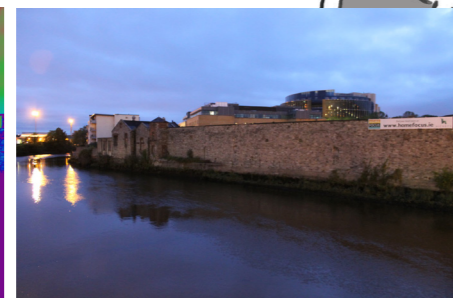
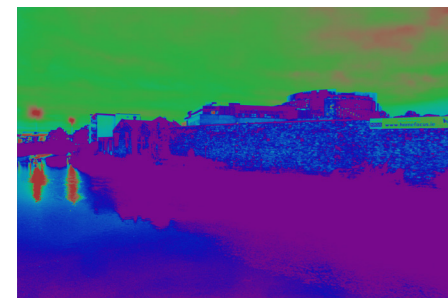
## Route taken, observation and measures



### Observation Point 1

End of Infirmiry Rd, view to Parkgate Street.

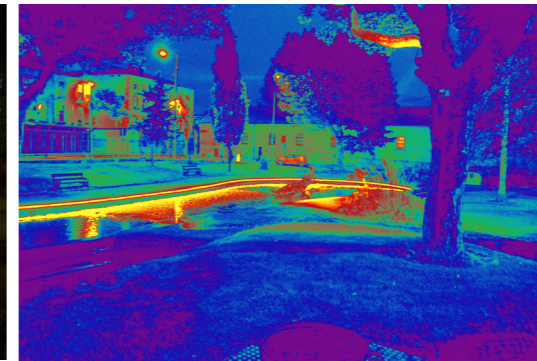
Street lighting poles for the carriageway.  
Facade lights on the Hotel first floor at the corner.



### Observation Point 5

River front, view to site from Heuston Station  
Luas stop.

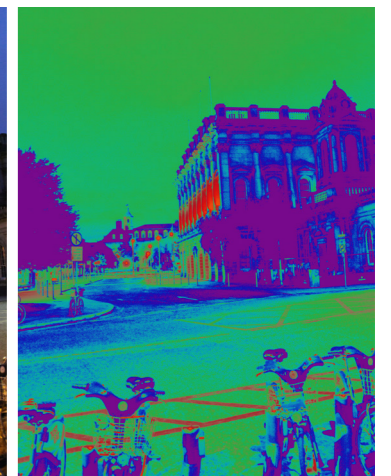
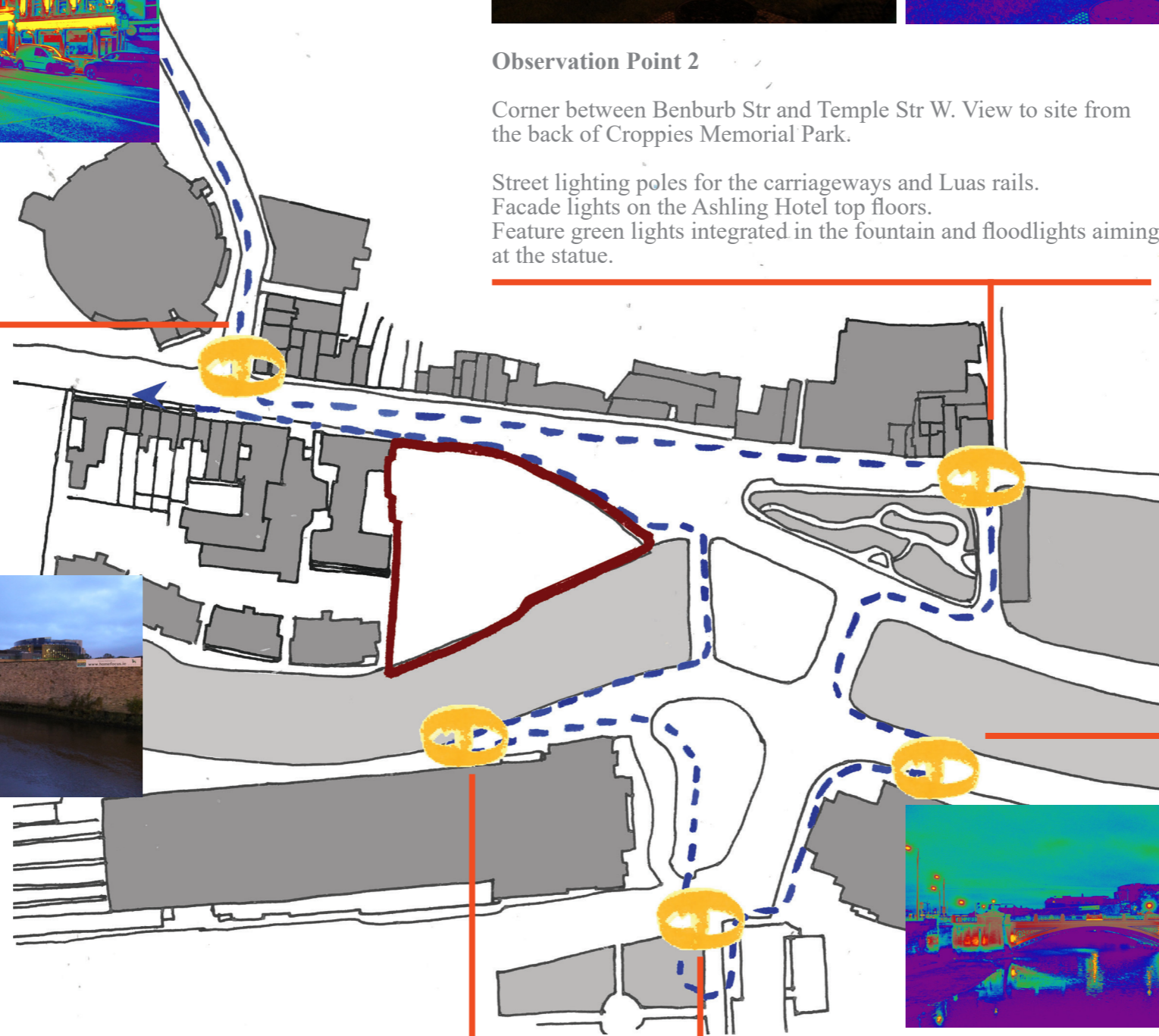
Street lighting poles for the carriageway and Luas rails. Dark area across the river, no lights in the residential buildings yards nor on the path along the river.



### Observation Point 2

Corner between Benburb Str and Temple Str W. View to site from the back of Croppies Memorial Park.

Street lighting poles for the carriageways and Luas rails.  
Facade lights on the Ashling Hotel top floors.  
Feature green lights integrated in the fountain and floodlights aiming at the statue.



### Observation Point 3

View to site from Victoria Quay.

Street lighting poles for the carriageways.  
Facade green lights on the Heuston station middle level.



### Observation Point 4

View to site from St John's Rd W.

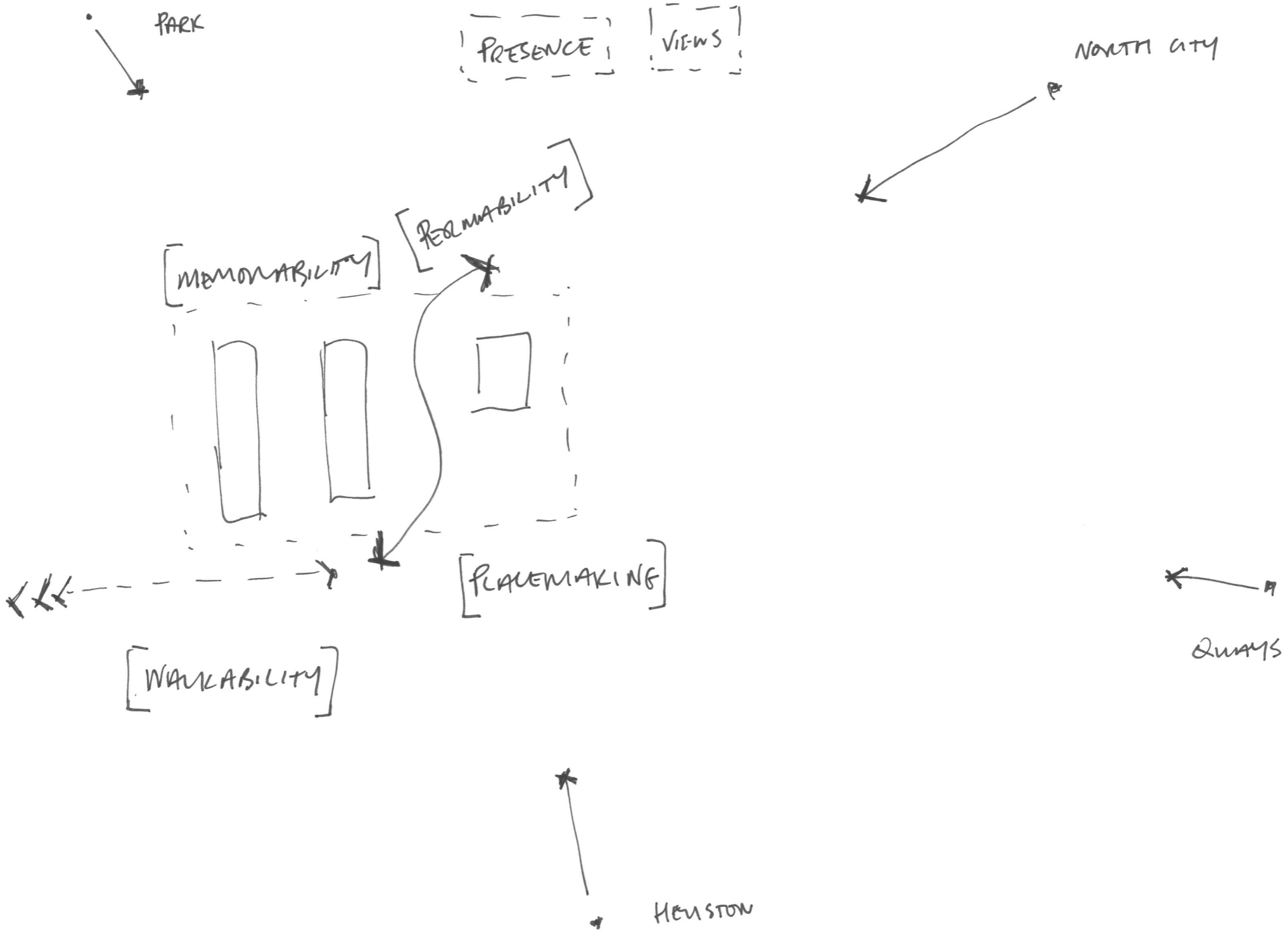
Street lighting poles for the carriageways.  
Facade green lights on the Heuston station middle level.

cd/sqm
10
6.309
3.981
2.511
1.584
1
0.630
0.398
0.251
0.158
0.1

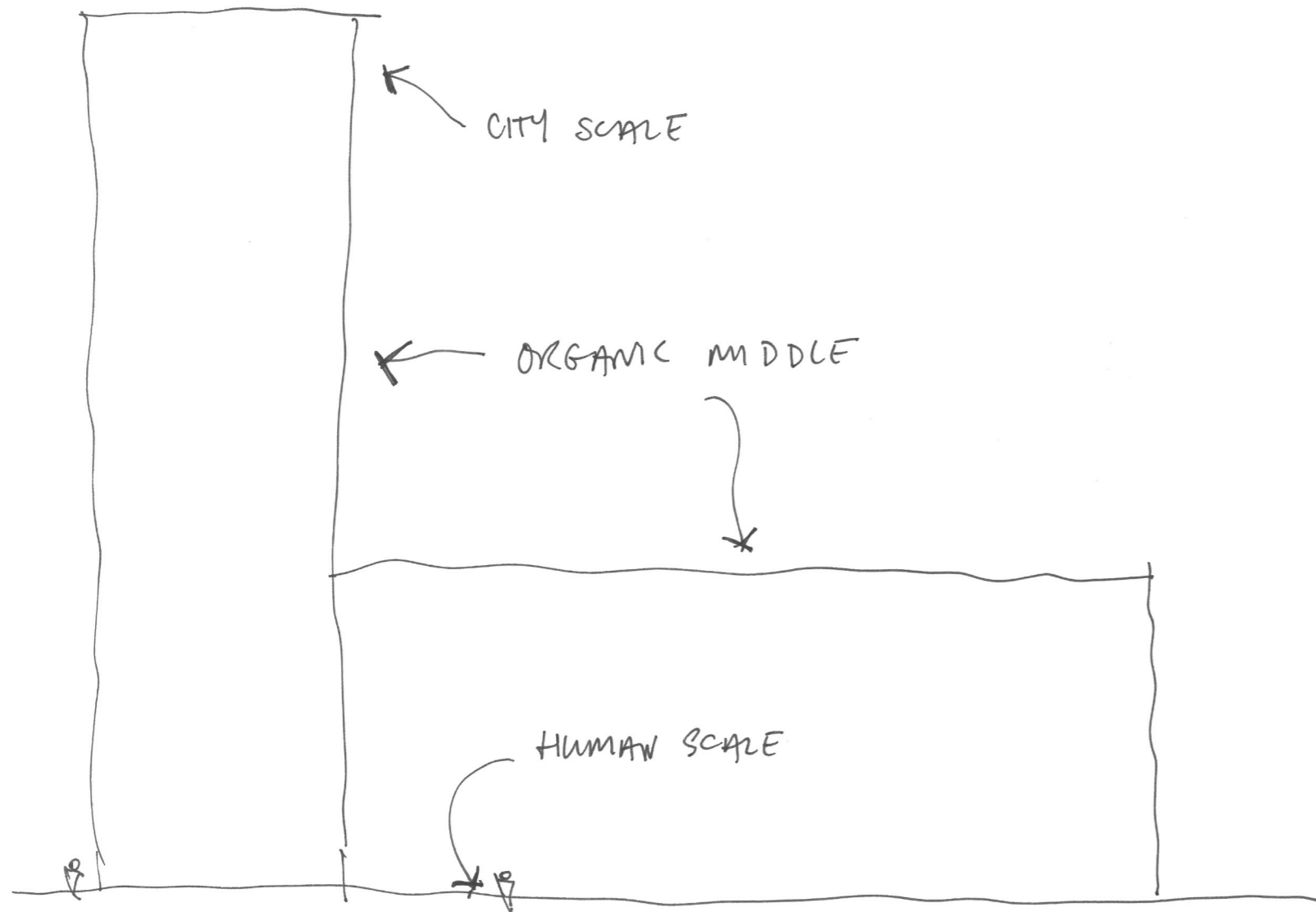
Lighting @

**ARUP**

# Lighting Concept - Activity and Views



# Lighting Concept



**City Scale**



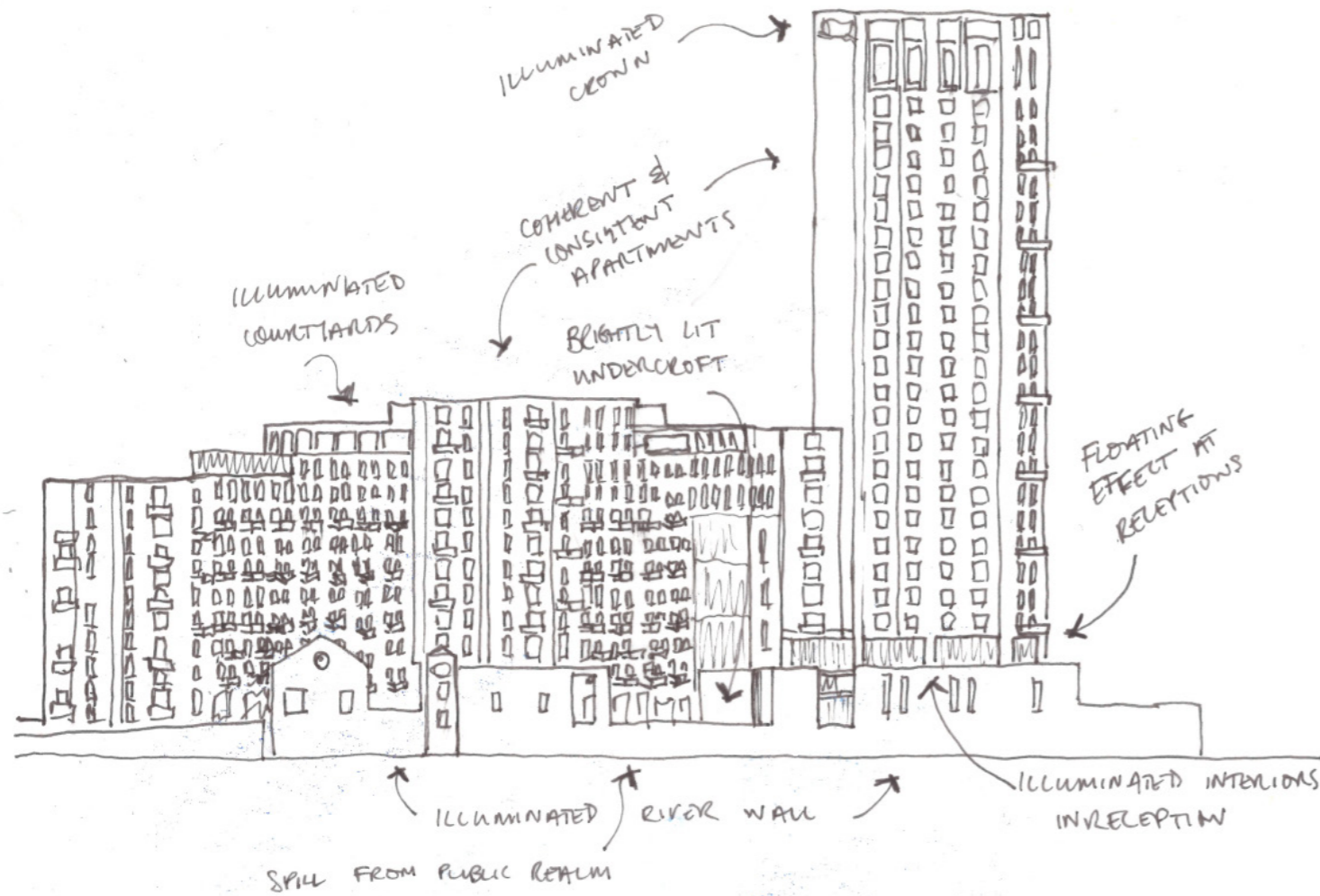
**Organic Middle**



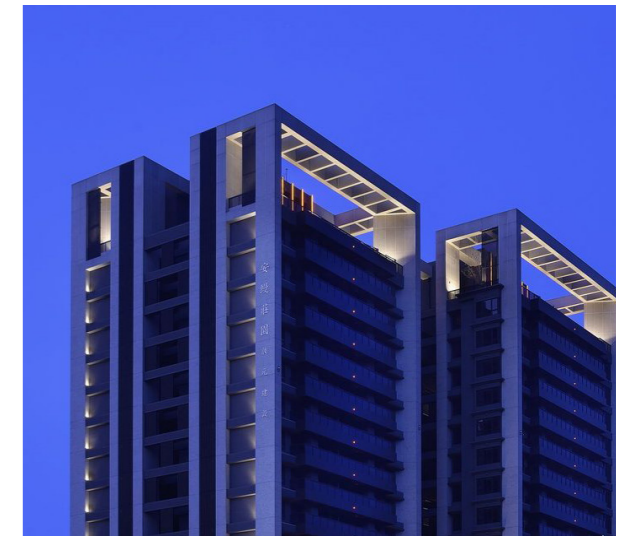
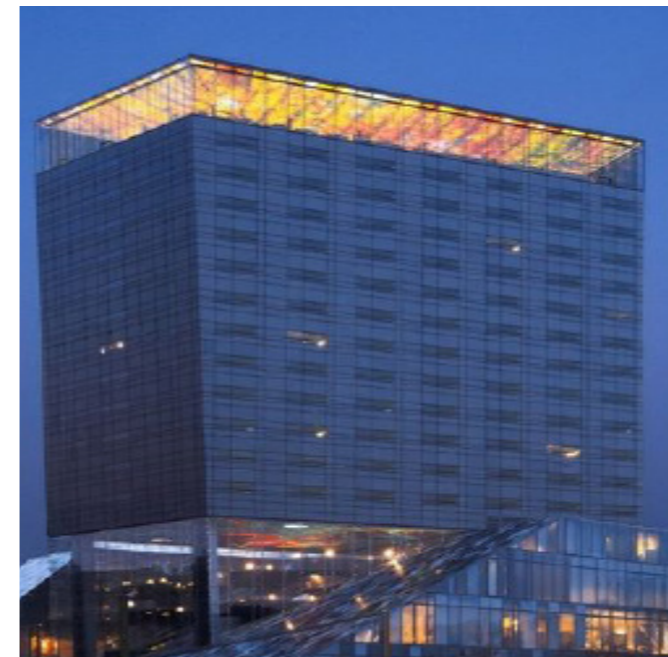
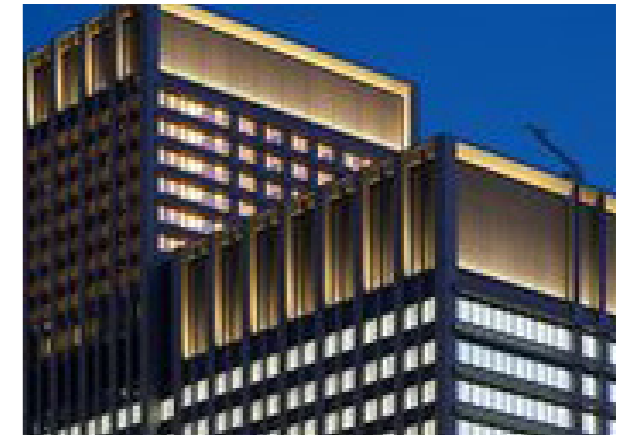
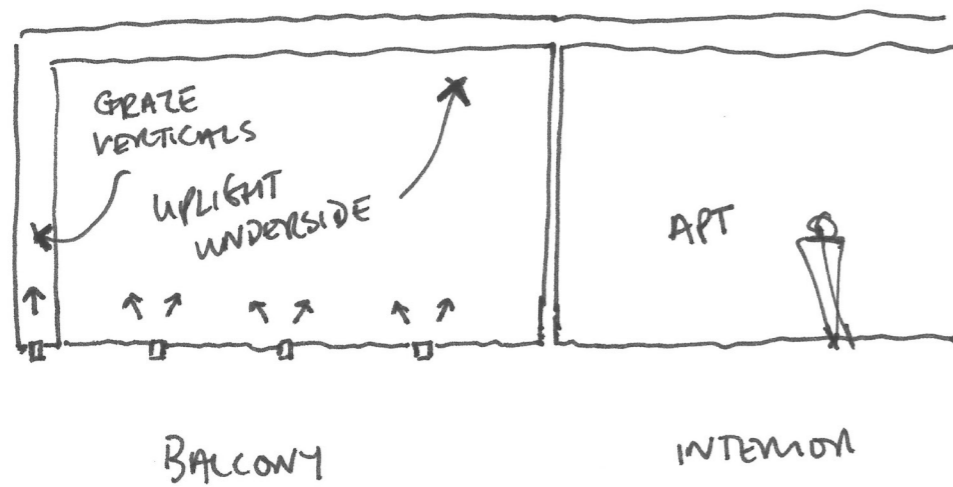
**Human Scale**



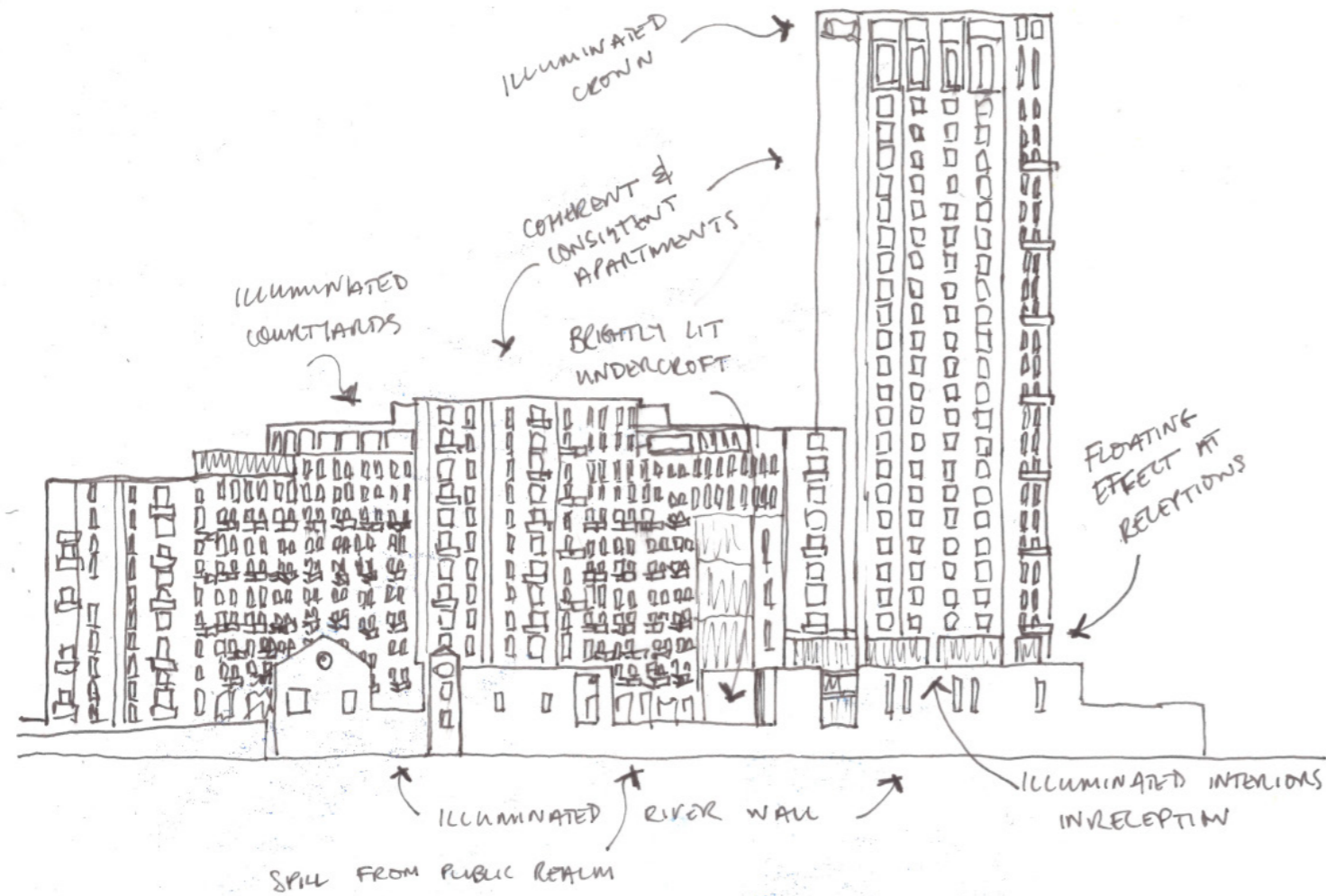
## Tower Top Level



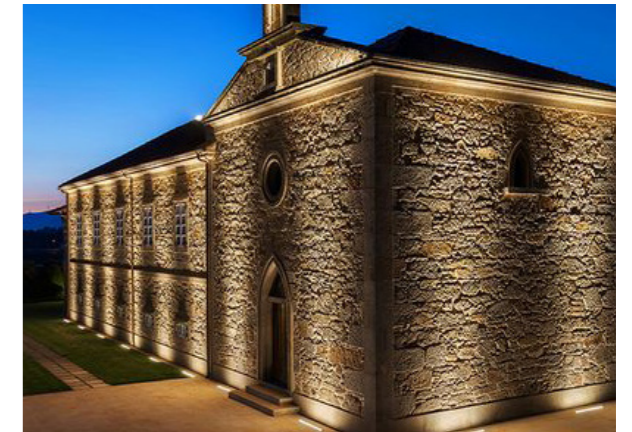
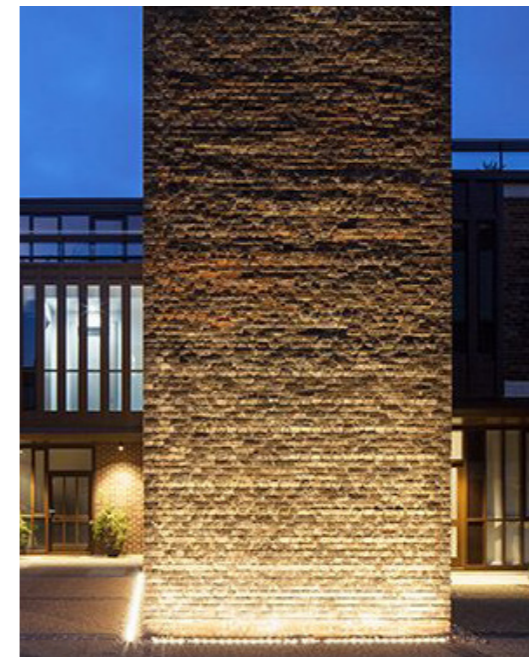
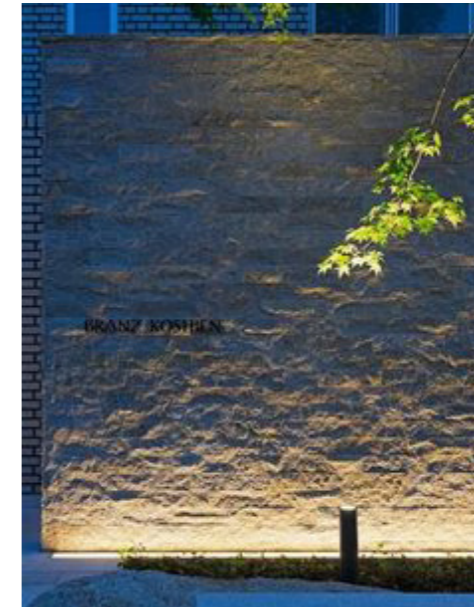
### ILLUMINATED CROWN:



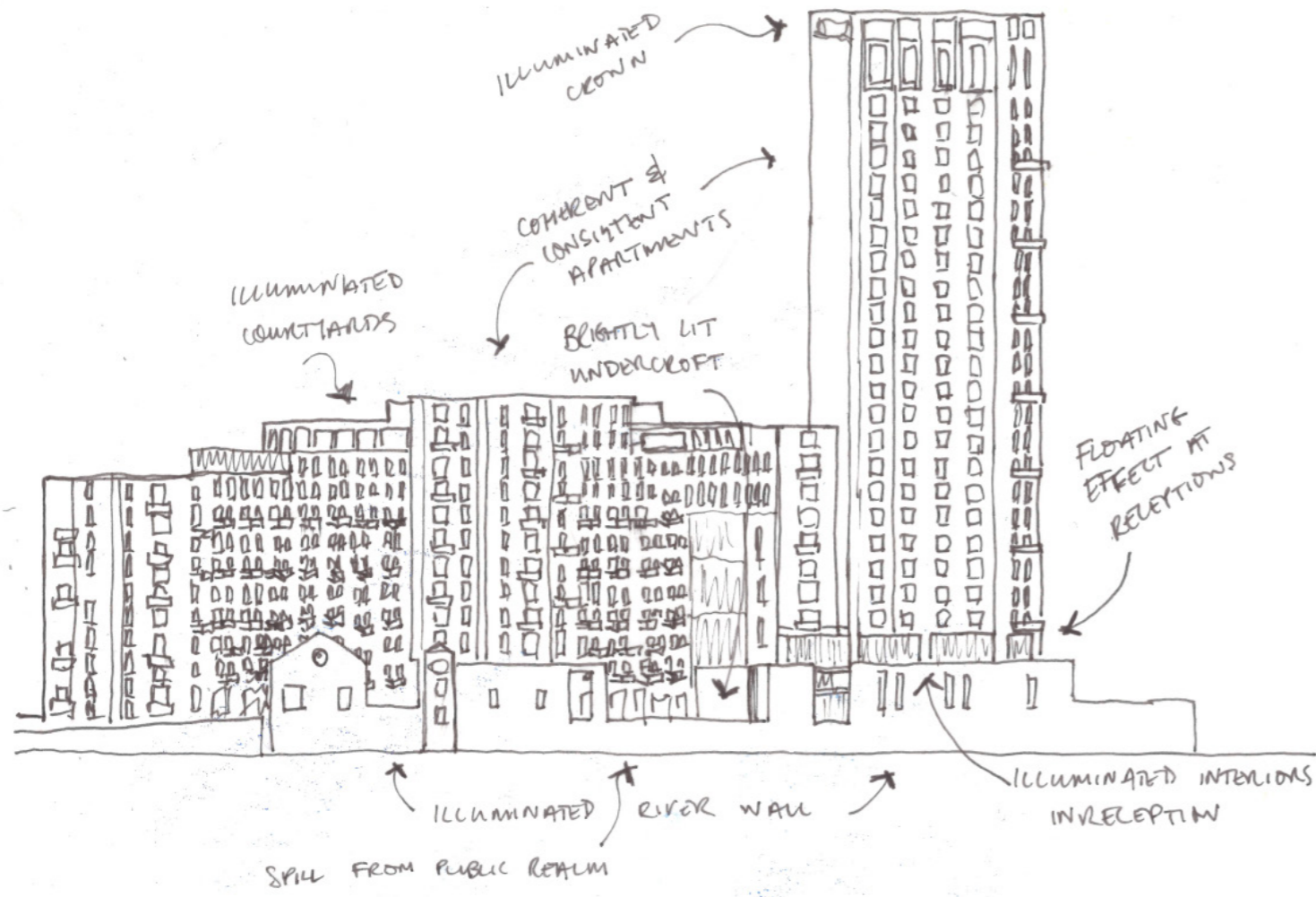
## Footpath along the river



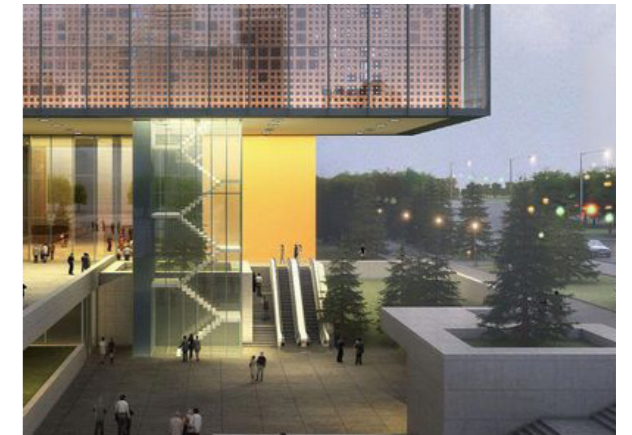
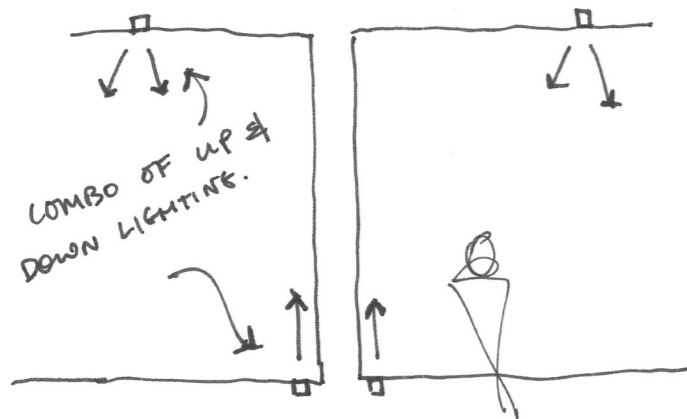
EXISTING STONE WALL:



## Floating Effect Ground Floor

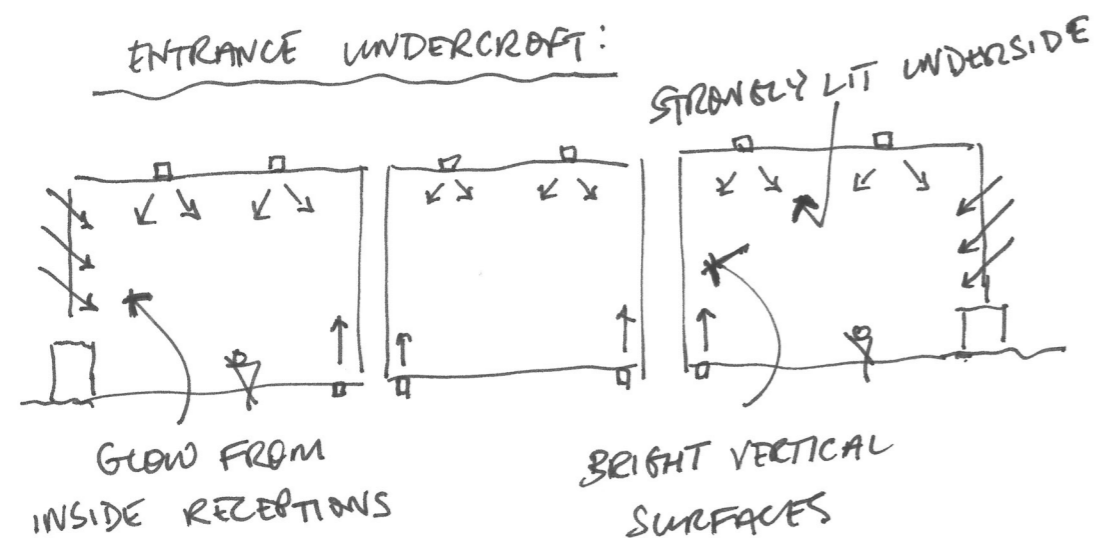
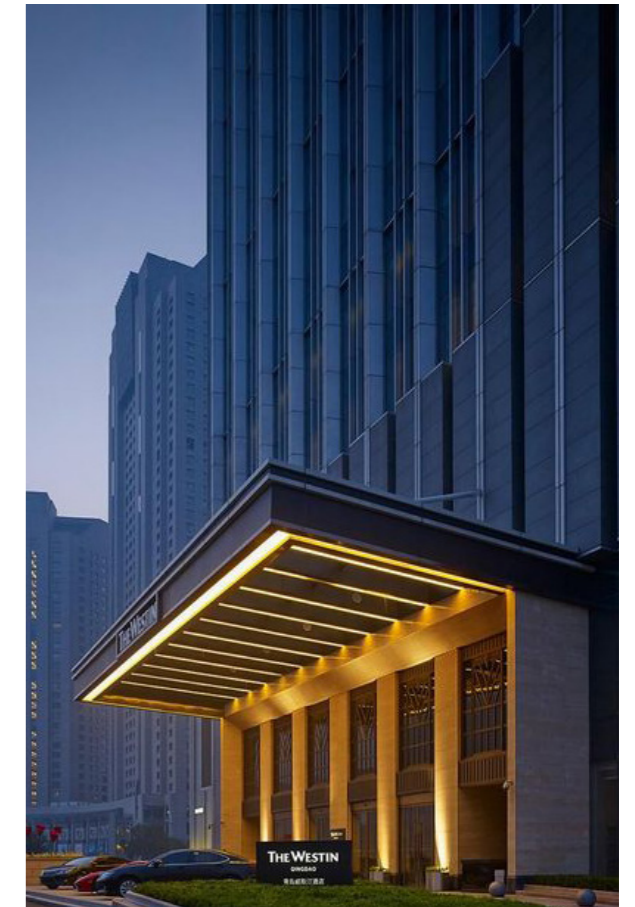
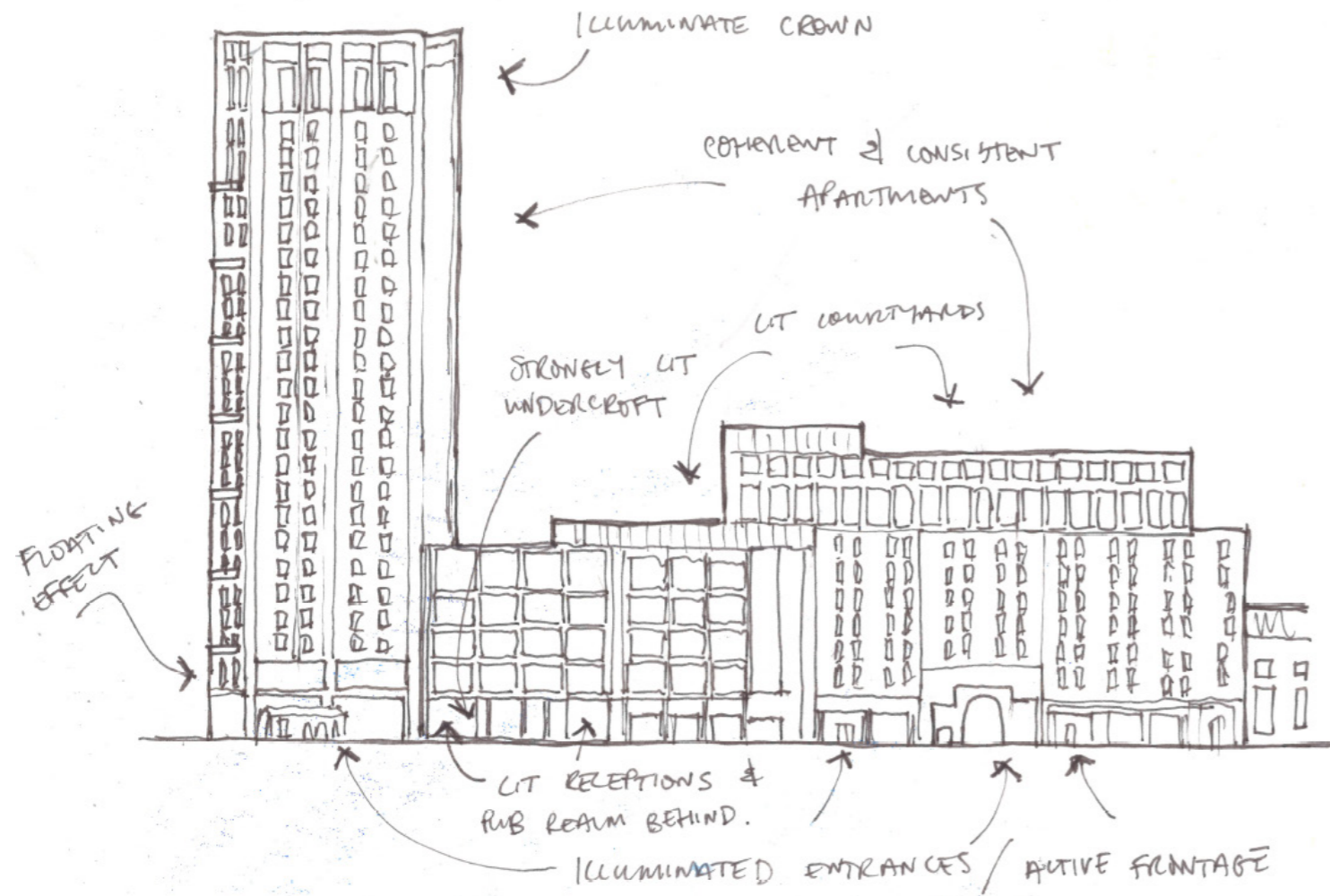


### FLOATING EFFECT:

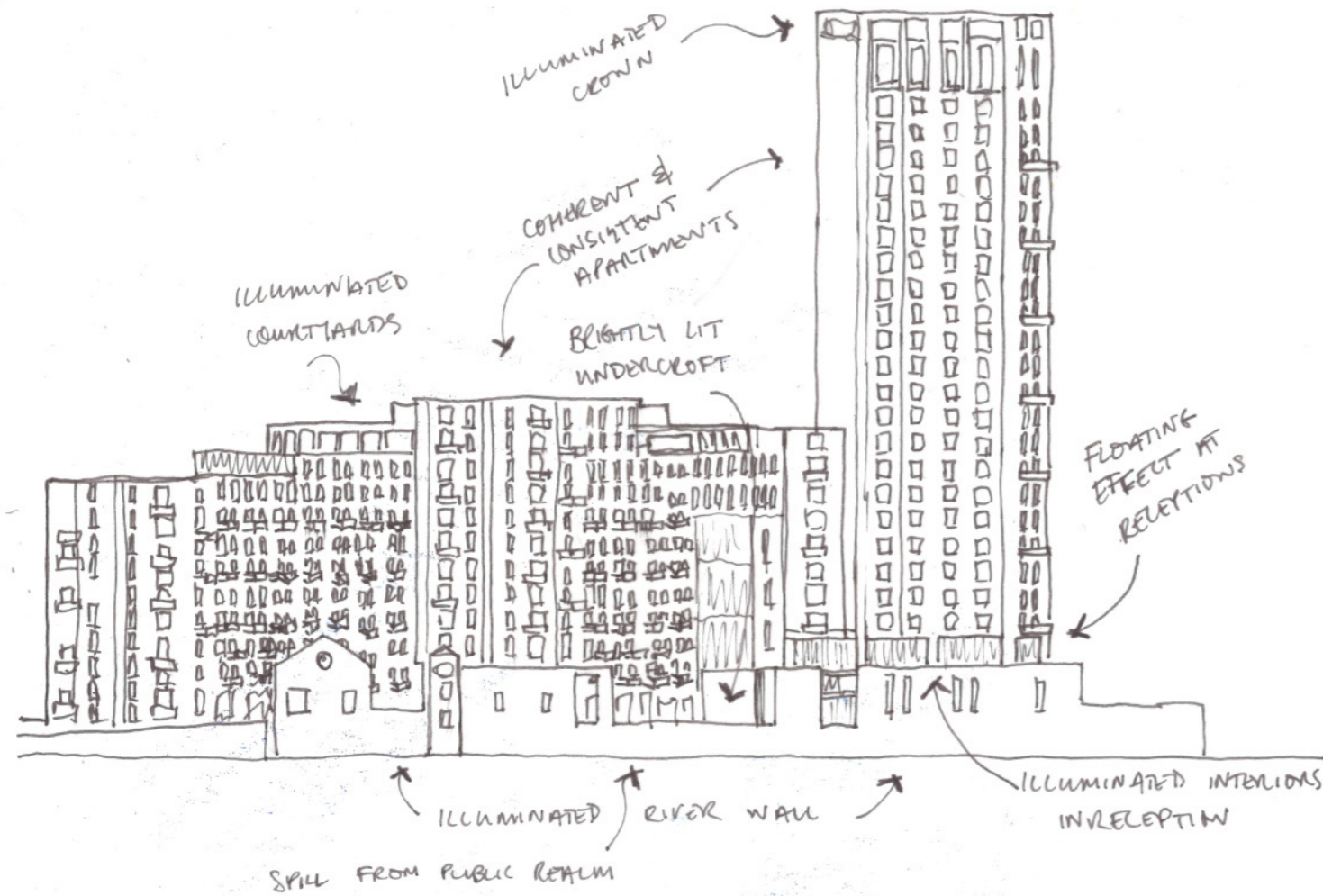




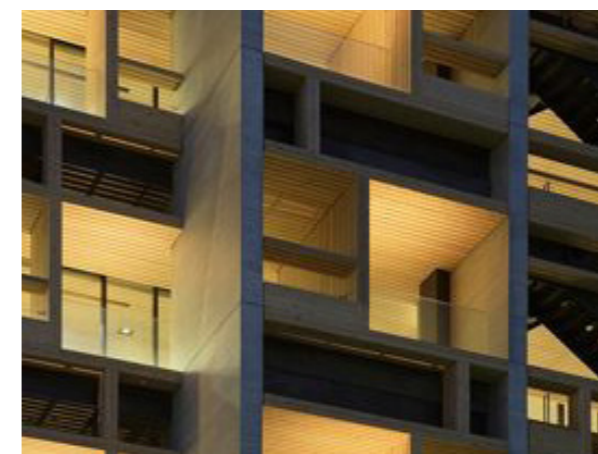
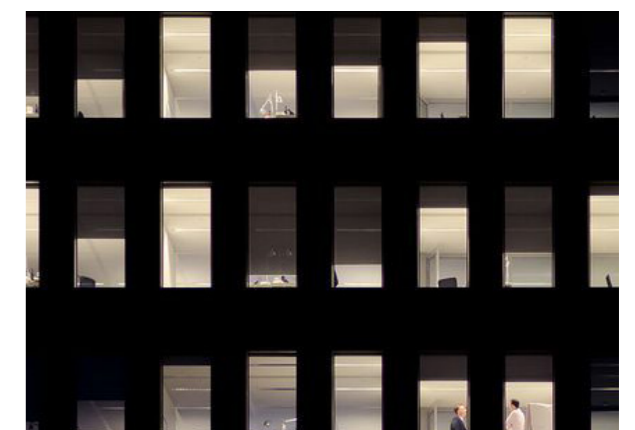
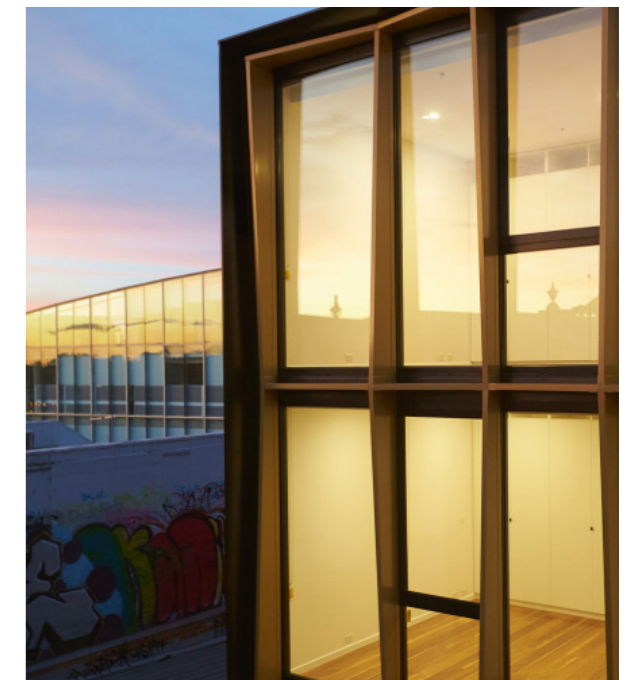
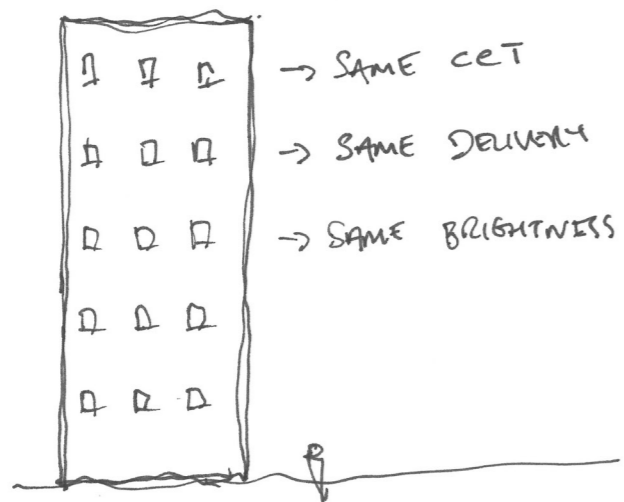
## Entrance to Public Realm



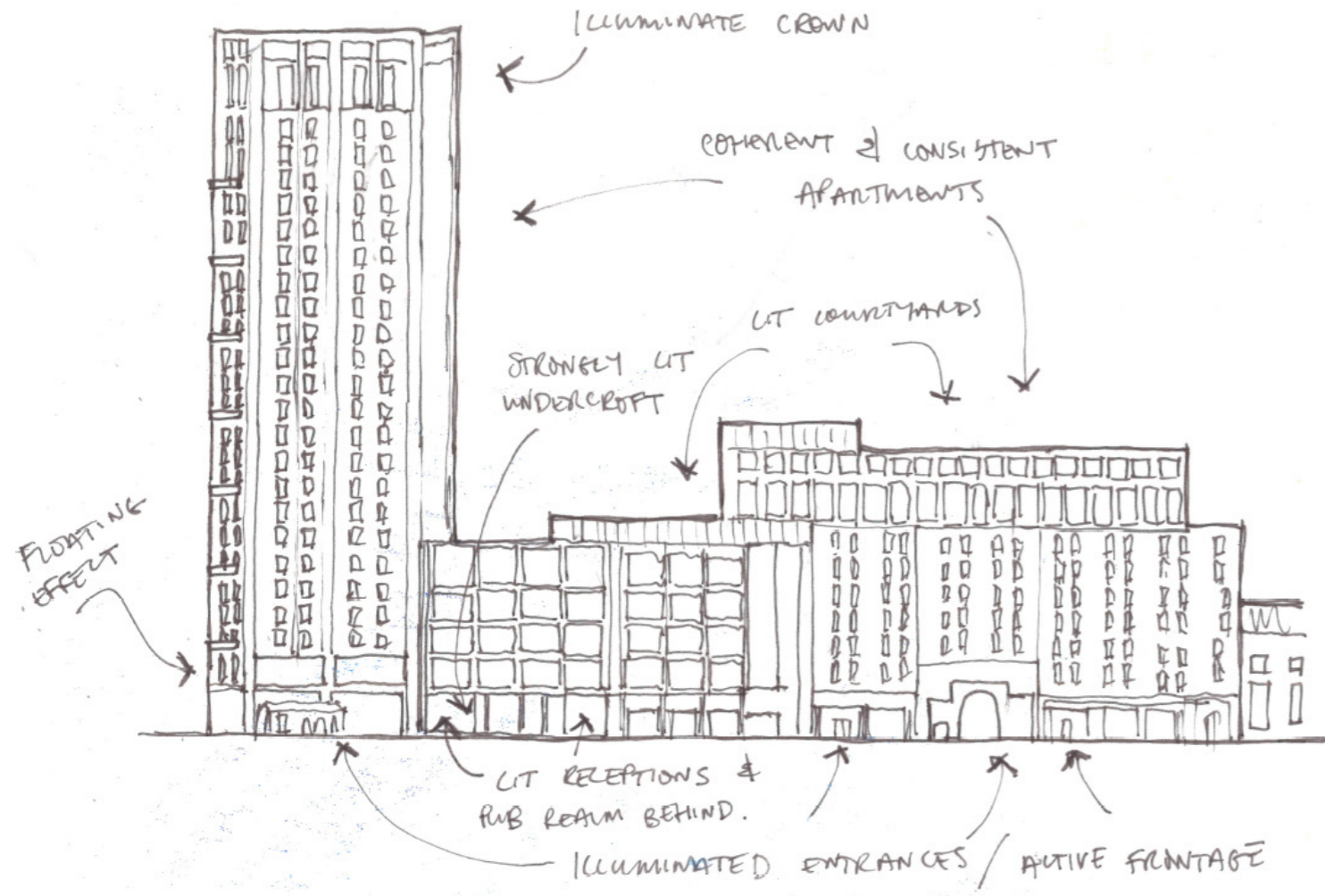
## Apartments Light Consistency



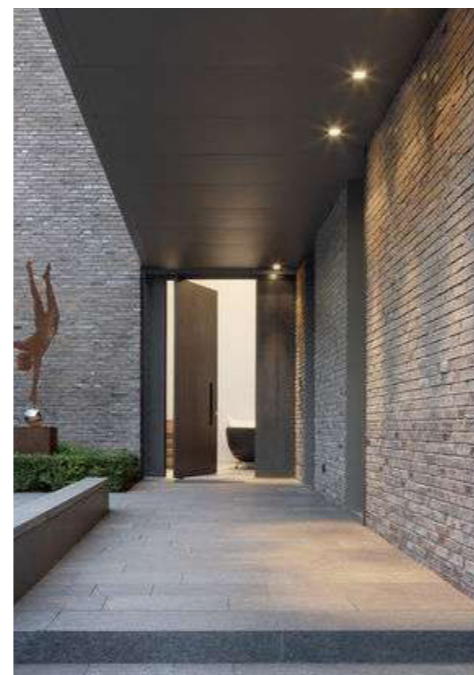
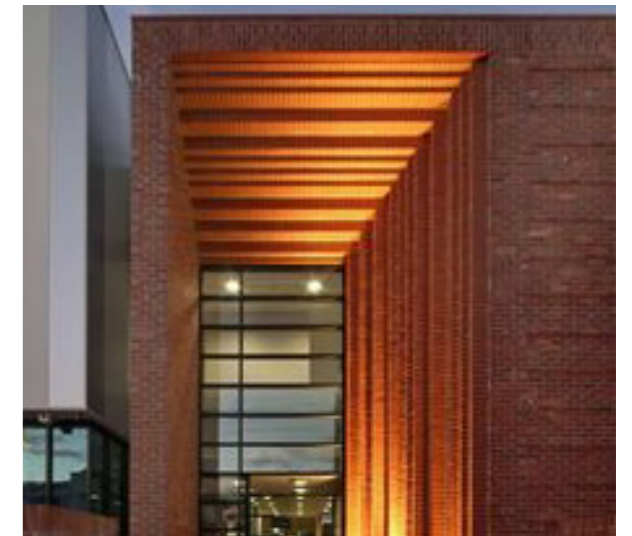
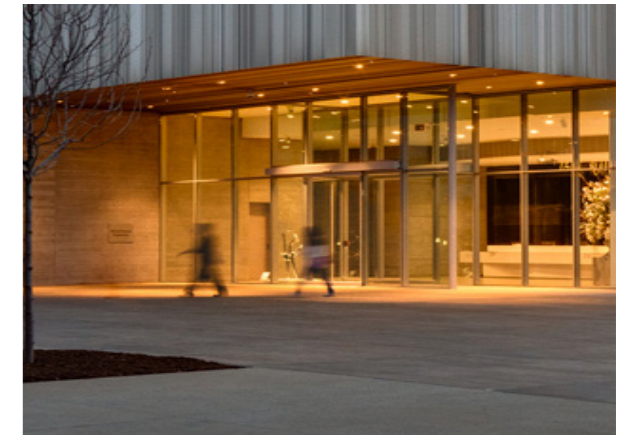
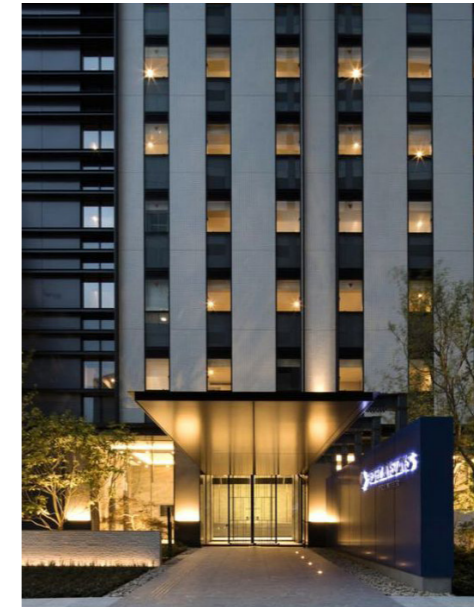
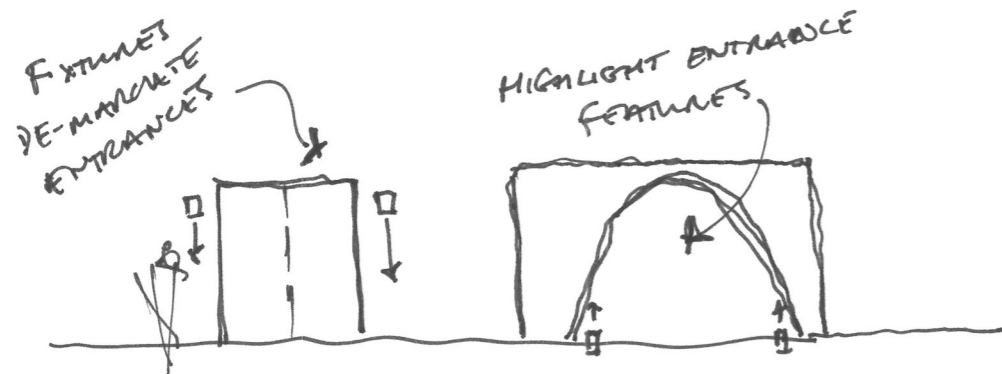
### COHERENCE IN APARTMENTS:



## Building Entrances

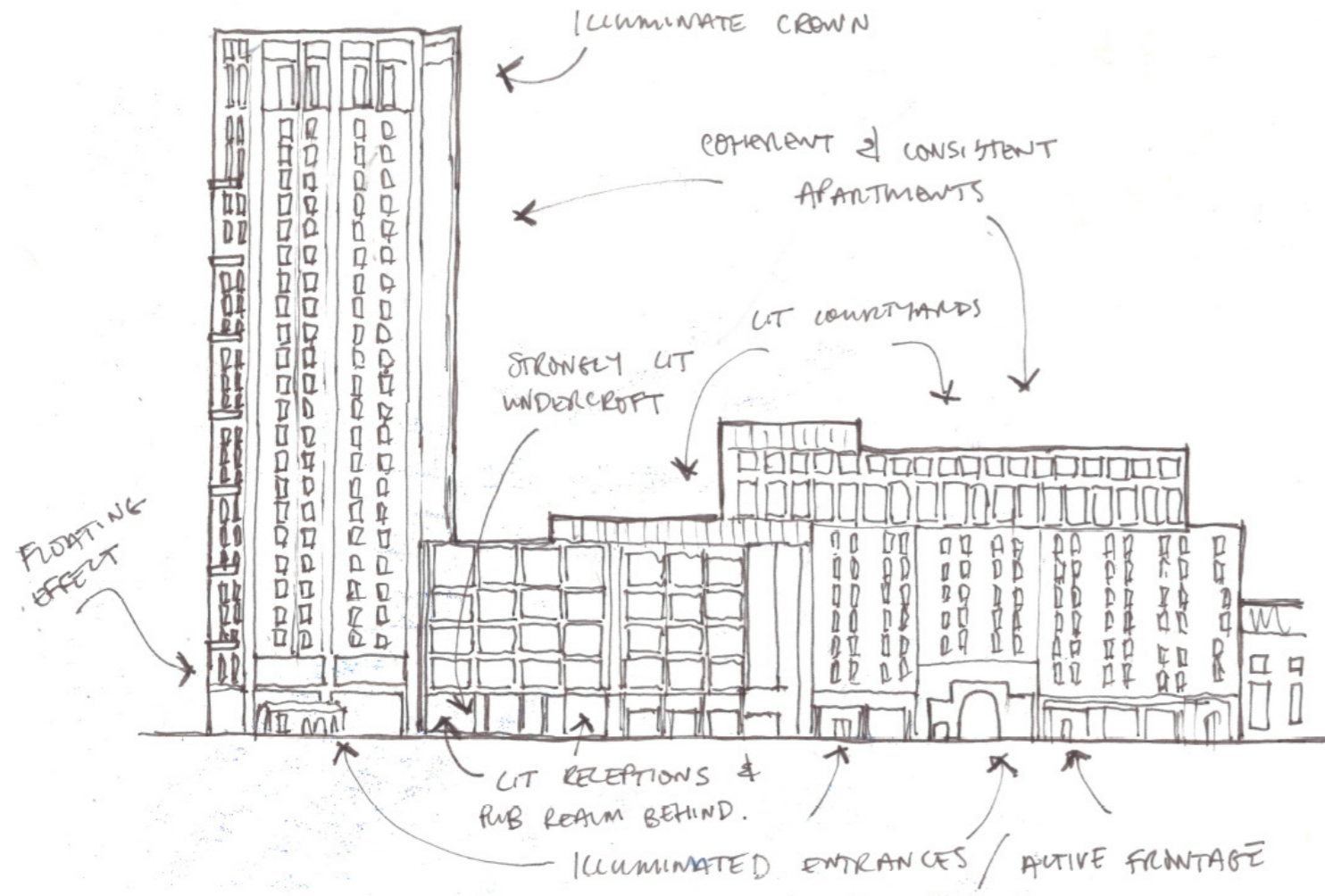


### BUILDING ENTRANCES:

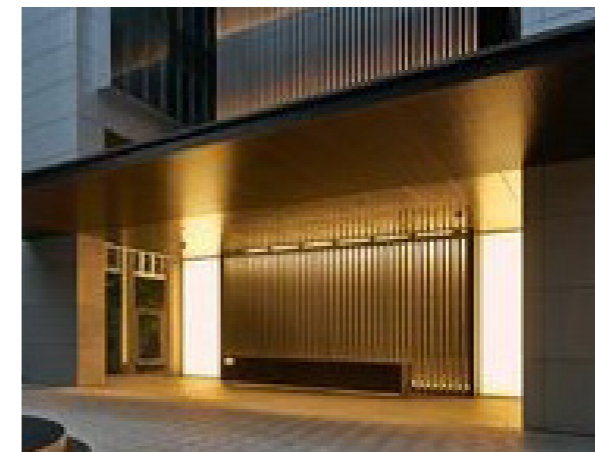
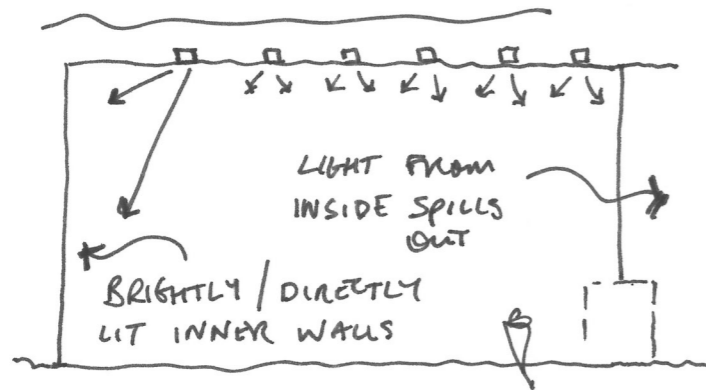


# Bright Receptions

# Lighting Concept



## BRIGHT RECEPTIONS:







## Arup | Lighting

Arup  
50 Ringsend Road  
Dublin 4  
Ireland

Contact: James Duff  
Telephone: t +353 1 2334455  
Email: [james.duff@arup.com](mailto:james.duff@arup.com)  
[www.arup.com/lighting](http://www.arup.com/lighting)