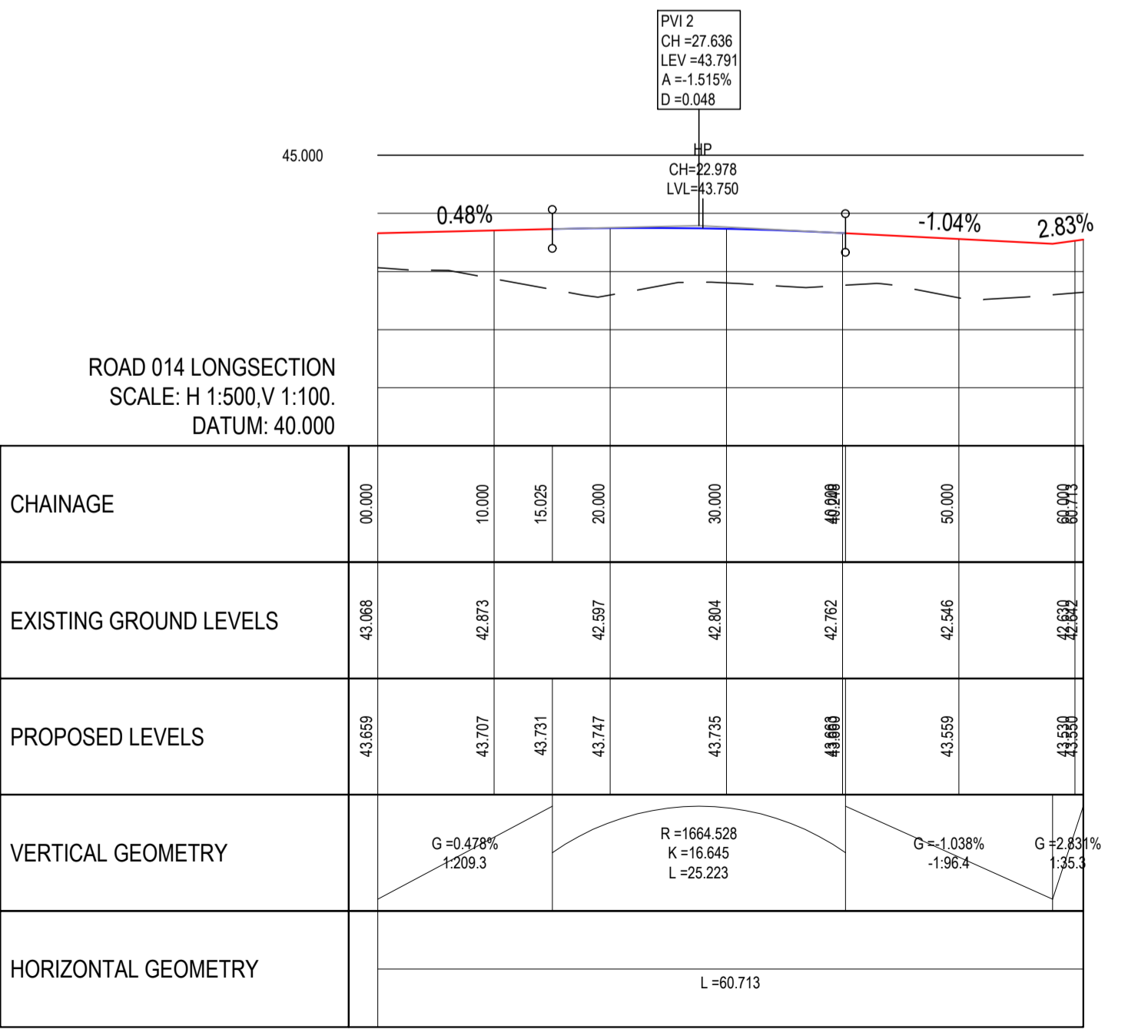
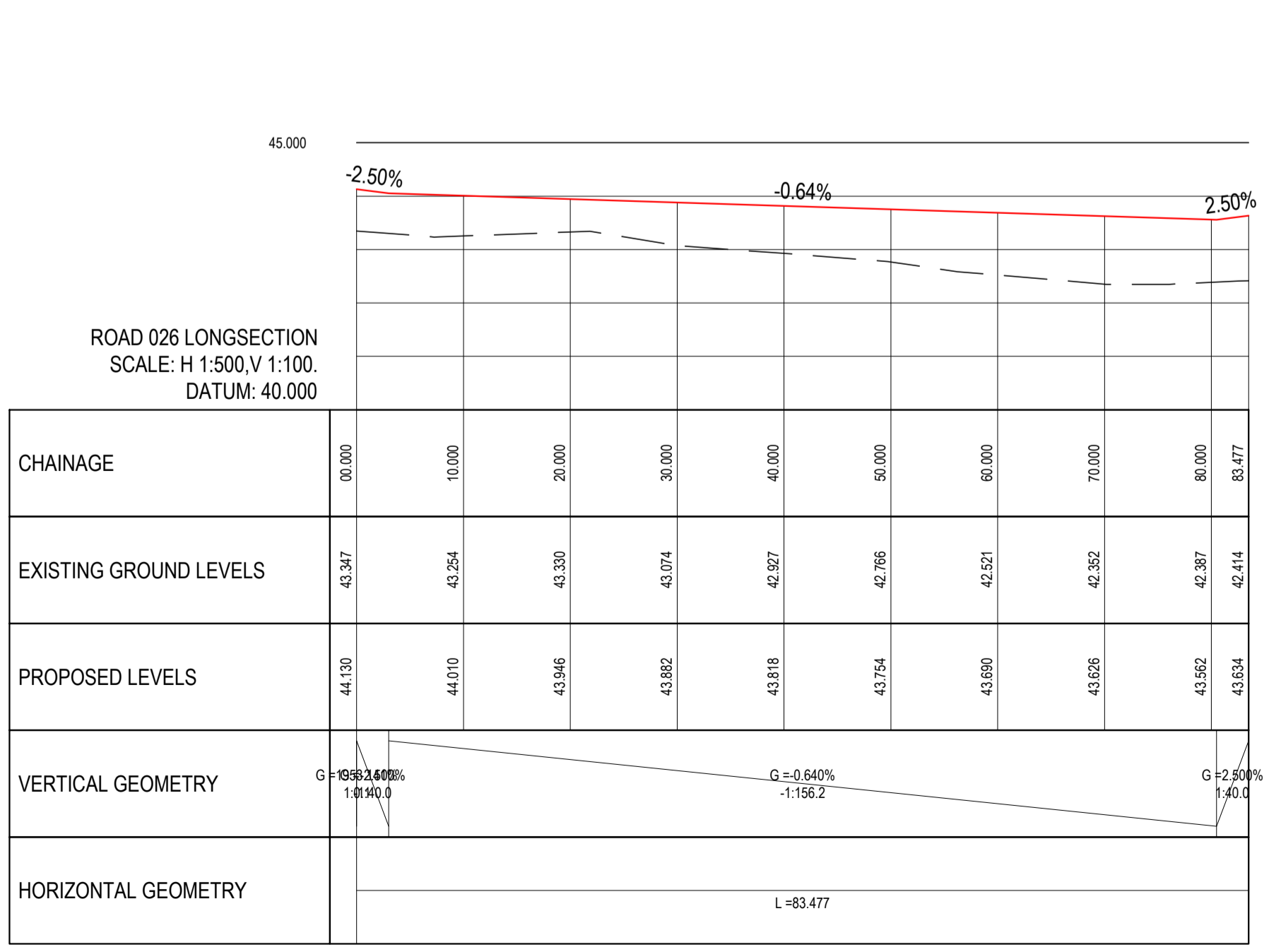
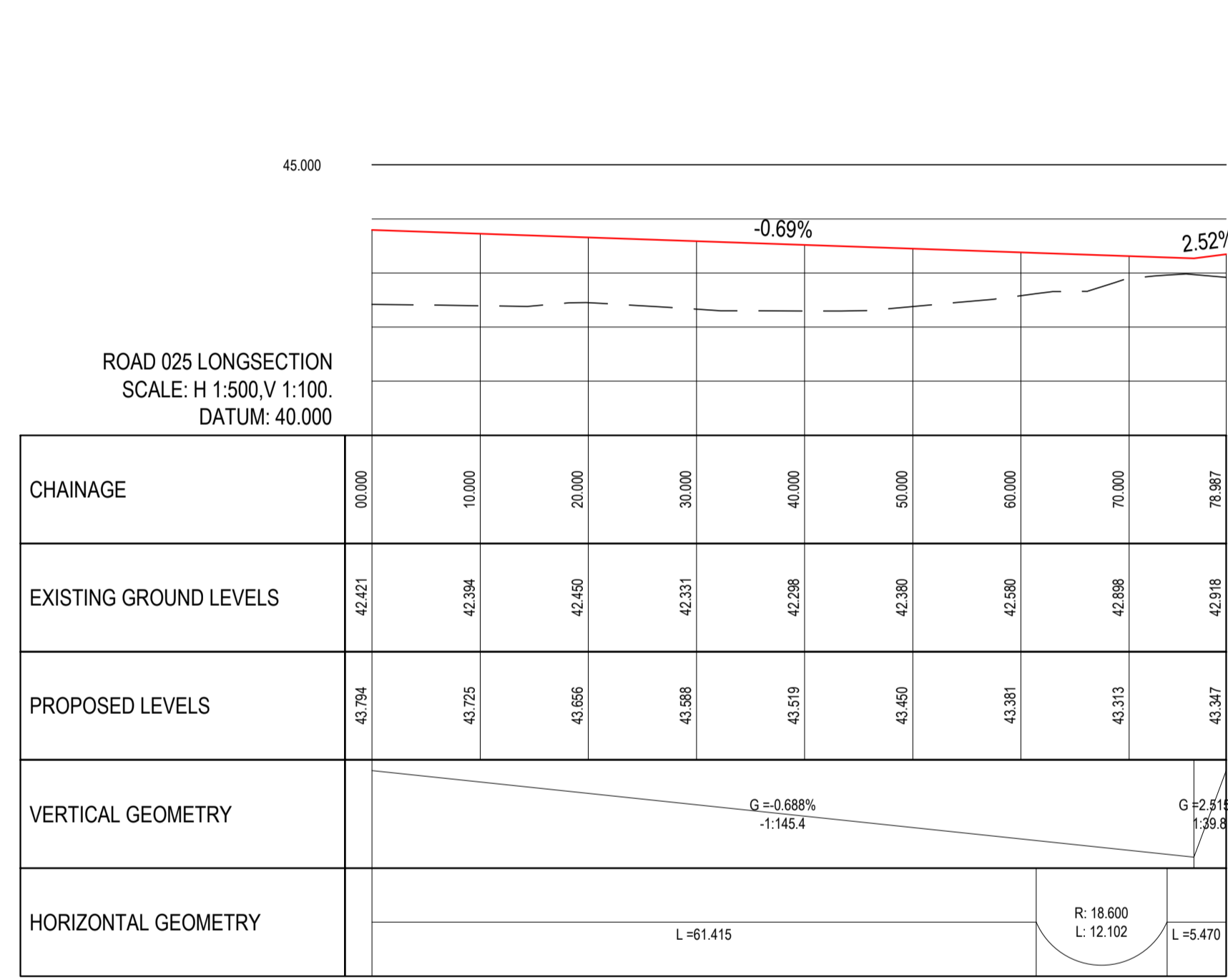
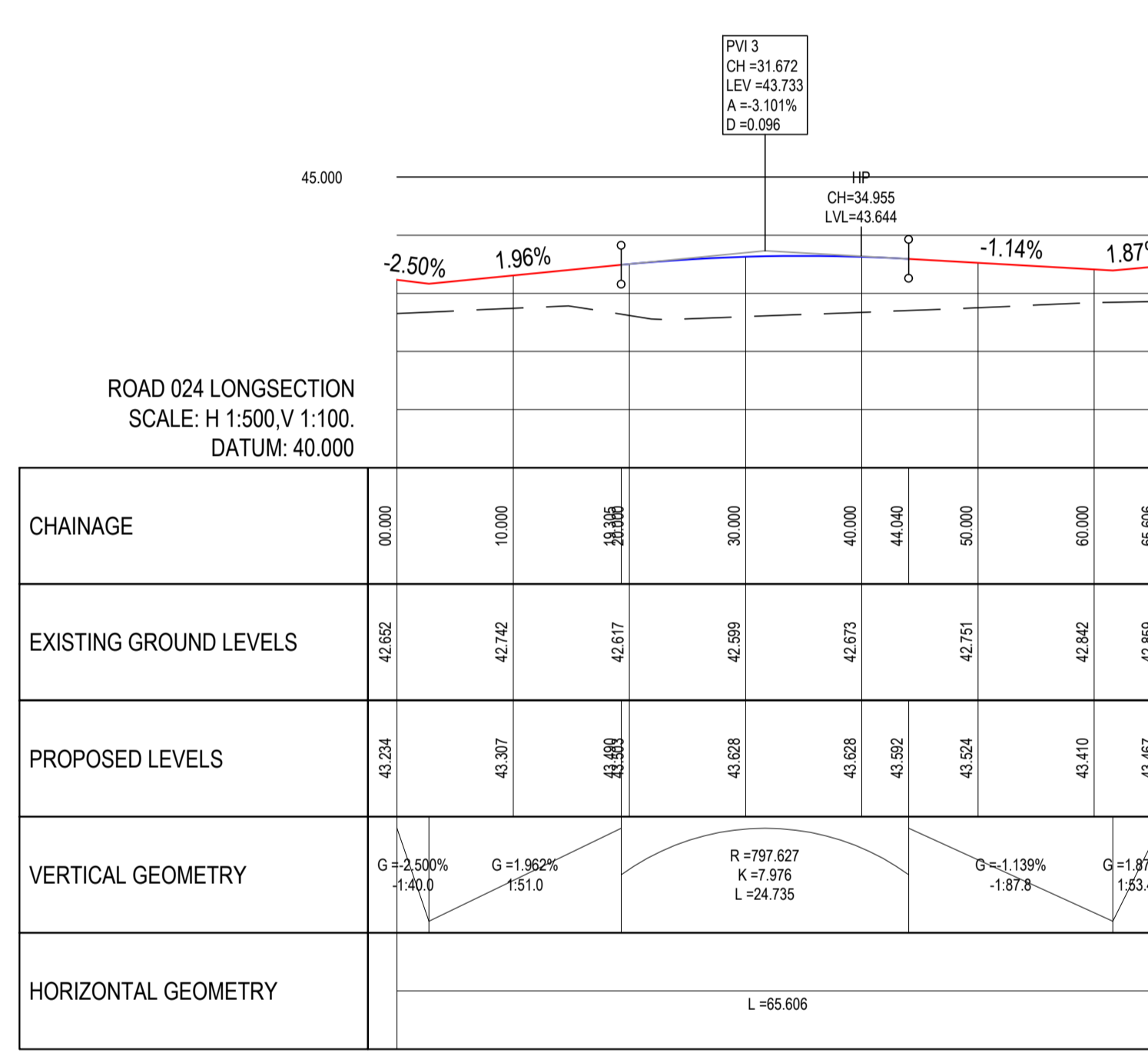
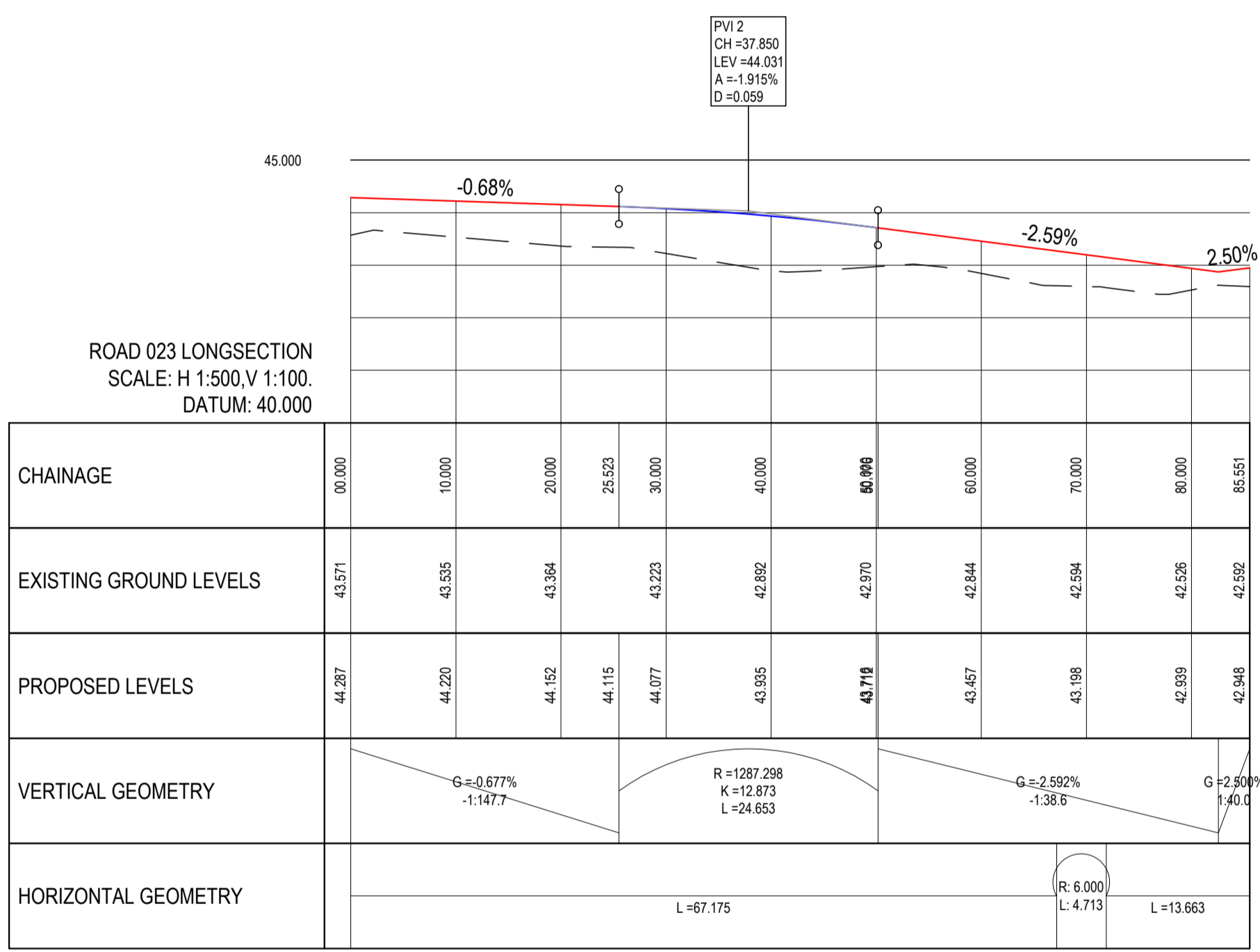
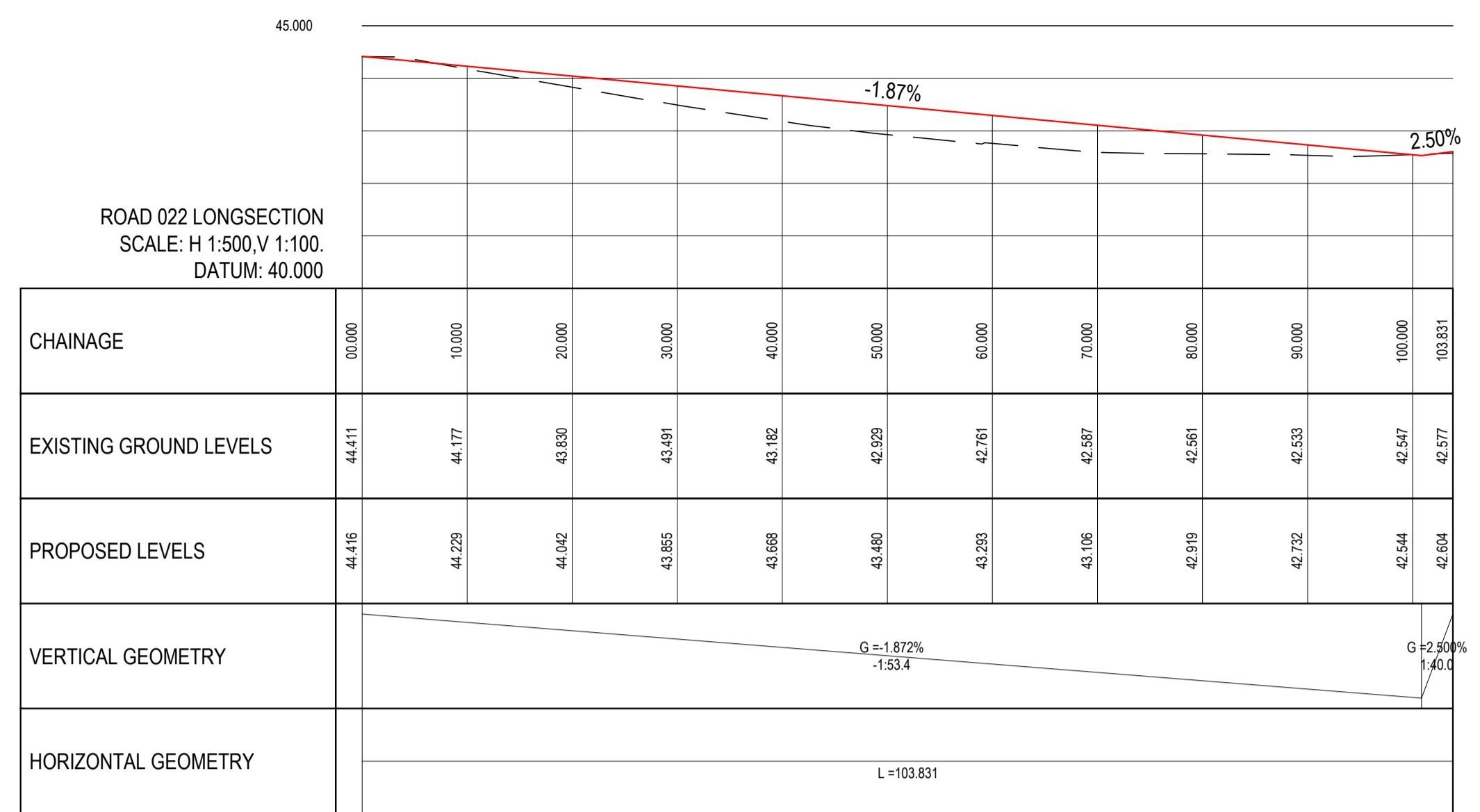
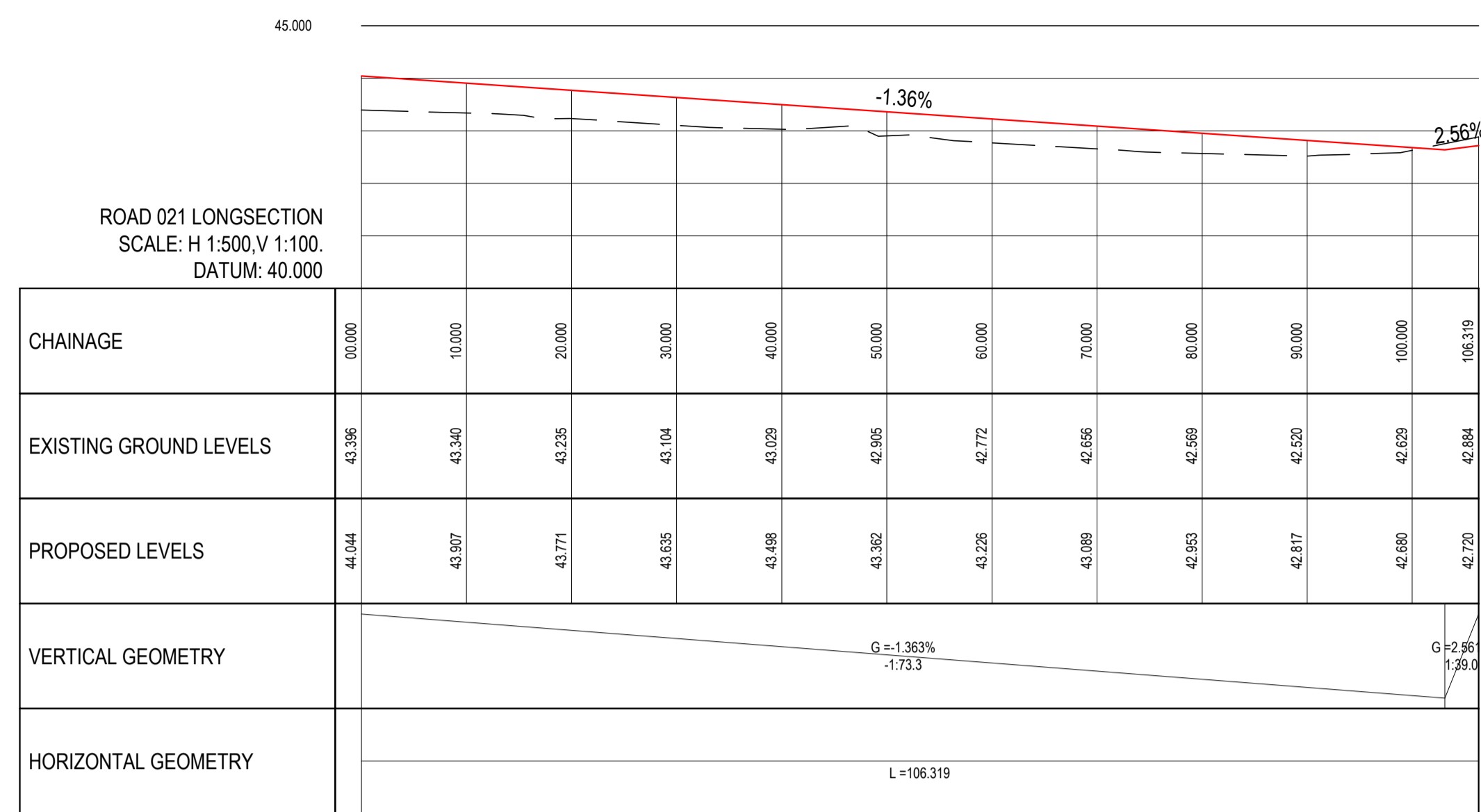
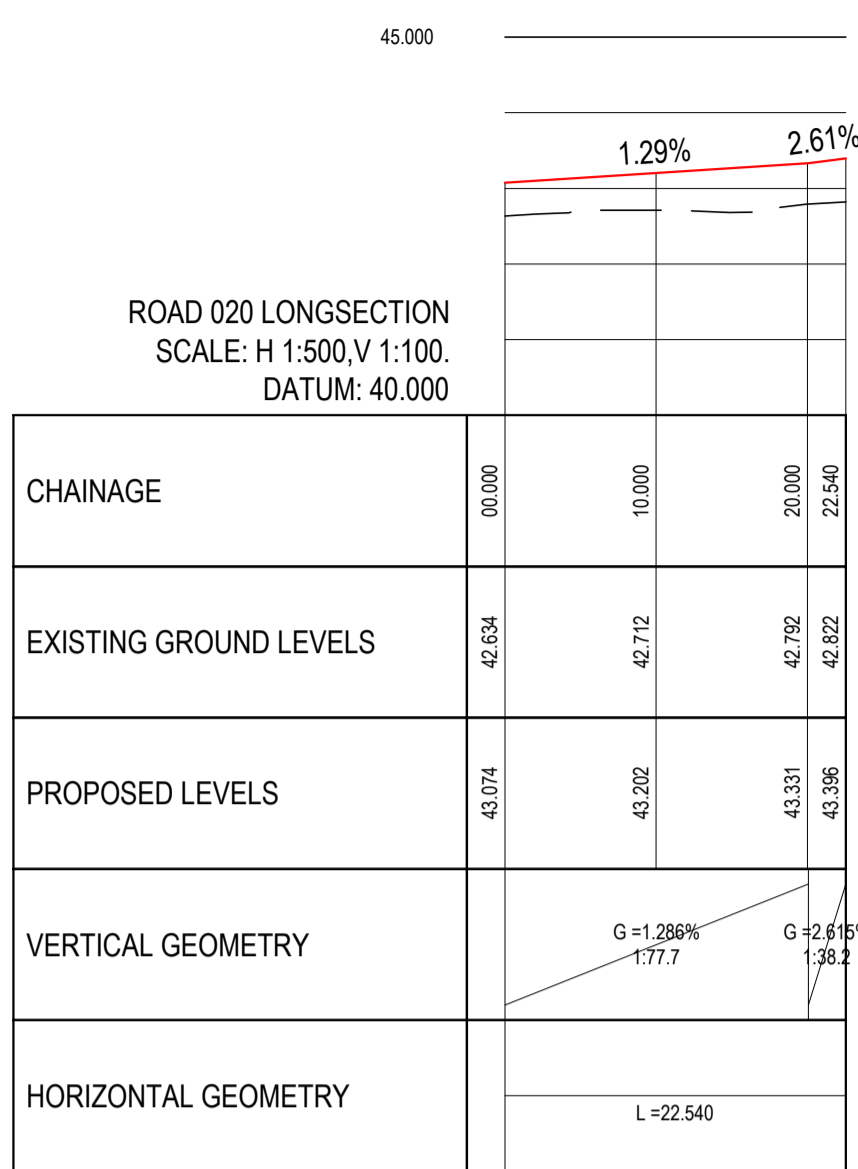


NOTES:



P01	25-01-21	ISSUED FOR PLANNING	KGO	LMCL
rev	date	description	by	chkd.
client approval	A - Approved B - Approved with comments C - Do not use			
suitability	S2 - INFORMATION	PLANNING	issue purpose	

DBFL Consulting Engineers
Civil, Structural & Transportation Engineering
www.dbfl.ie

DUBLIN OFFICE: Ormond House, Upper Ormond Quay, Dublin 7, D07 W704
PHONE: +353 (0) 1 404 4000
CORK OFFICE: Phoenix House, Monahan Road, Cork, T12 H1XV
PHONE: +353 (0) 21 2204338
WATERFORD OFFICE: Suite 10 The Arkun, Marzana Gate, Canada Street, Waterford, X91 W028
PHONE: +353 (0) 51 309 500

project ref.
LISSYWOLLEN RESIDENTIAL DEVELOPMENT AT BRAUNY ROAD, LISSYWOLLEN, ATHLONE, CO. WESTMEATH

drawing title
ROAD LONGSECTIONS SHEET 4 OF 6

architect
DELPHI ARCHITECTS

designed by	author	scale	sheet size
LMCL	KGO	AS	A1
drawing no.	180176-DBFL-RD-SP-DR-C-3003	P01	revision