

## Chapter 4 Biodiversity

### Appendix 2-C

### Additional Photographic Plates



**Plate 1.** Ragwort (*Jacobaea vulgaris*) with cow dung present in a field of an Improved agricultural grassland (not to scale).



**Plate 2.** Self-heal (*Prunella vulgaris*) in a field of an Improved agricultural grassland (not to scale).



**Plate 3.** Vetch sp. (*Vicia spp.*) with Bramble (*Rubus fruticosus*) and Cleavers (*Galium aparine*) (not to scale).



**Plate 4.** Great willowherb (*Epilobium hirsutum*) close to a drainage ditch (not to scale).



**Plate 5.** Silverweed (*Potentilla anserina*) close to a drainage ditch (not to scale).



**Plate 6.** Thistle (*Cirsium spp.*) in a field of an Improved agricultural grassland (not to scale).



**Plate 7.** Hedgerows and scrub with Hawthorn (*Crataegus monogyna*), Gorse (*Ulex europaeus*) and Brambles (*Rubus fruticosus*).



**Plate 8.** Bracken (*Pteridium aquilinum*) fringing a field of an Improved agricultural grassland.



**Plate 9.** Poaching of the soil beside drainage ditch south of proposed substation.



**Plate 10.** rough track leading south adjacent to Figile River.



**Plate 11.** Drainage ditch along field boundary southeast of proposed substation.



**Plate 12.** Drainage ditch along field boundary southeast of proposed substation.



**Plate 13.** Drainage ditch east of proposed substation heading in a southerly direction.



**Plate 14.** Drainage ditch discharging directly in to the Figle River south of the proposed cable route.



**Plate 15.** Rushy part of field leading towards cut over bog to the southwest of the proposed development.



**Plate 16.** Rushy part of field with waterlogged parts leading towards cut over bog to the southwest of the proposed development.



Plate 17. Fox (*Vulpes vulpes*) camera location 1.



Plate 18. Badger (*Meles meles*) camera location 1.



Plate 19. Badger camera location 1.



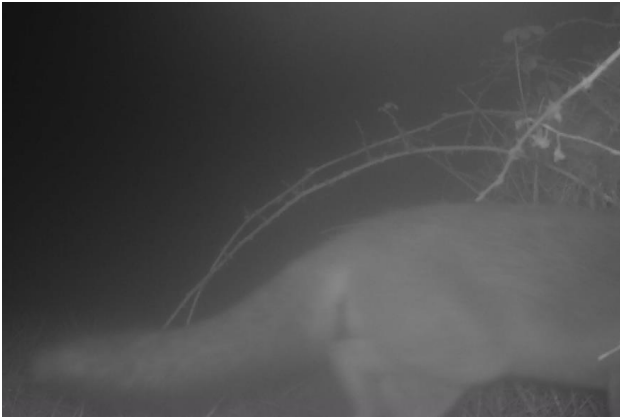
Plate 20. Badgers camera location 1.



Plate 21. Jay (*Garrulus glandarius*) camera location 1.



Plate 22. Woodcock (*Scolopax rusticola*) camera location 1.



**Plate 23.** Fox entering scrub camera location 2.



**Plate 24.** Fox exiting scrub camera location 2.



**Plate 25.** Badger exiting scrub camera location 2.



**Plate 26.** Badger about to enter scrub camera location 2.



**Plate 27.** Ewe and lambs in field close to camera location 2.



**Plate 28.** Robin perched on Bramble camera location 2.



**Plate 29.** Caterpillar of Cinnabar moth (*Tyria jacobaeae*) on food plant Ragwort (not to scale).



**Plate 30.** Yellow brain fungus (*Tremella mesenterica*) on a piece of rotting wood beneath a hedgerow (not to scale).