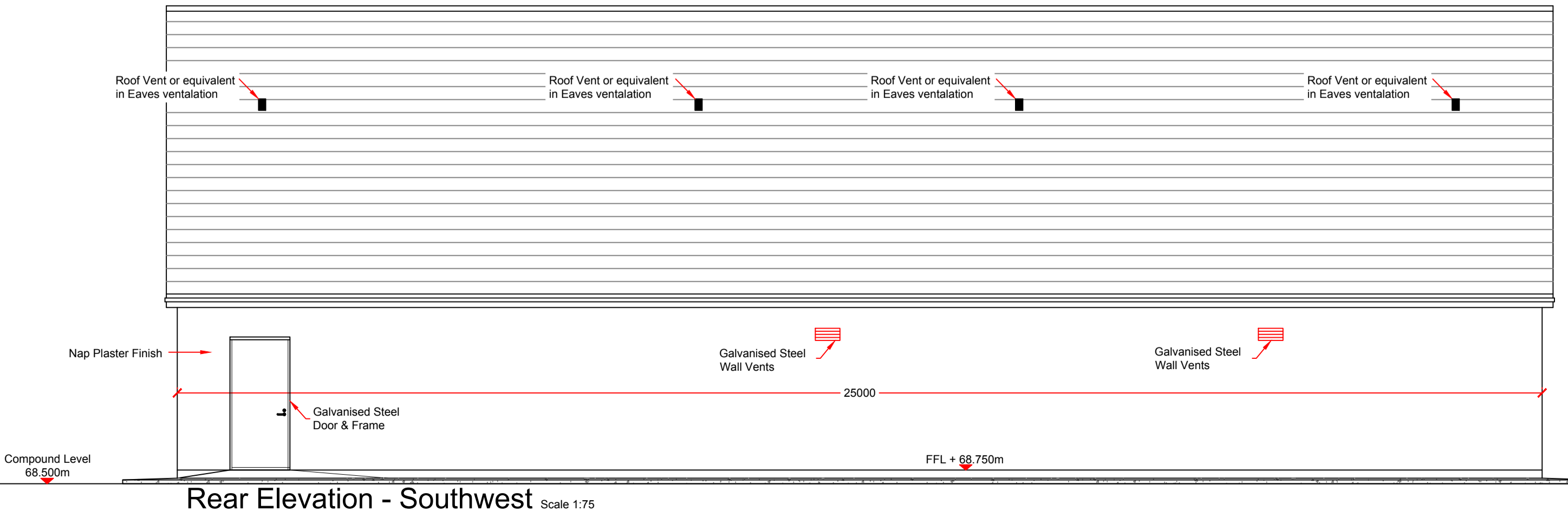
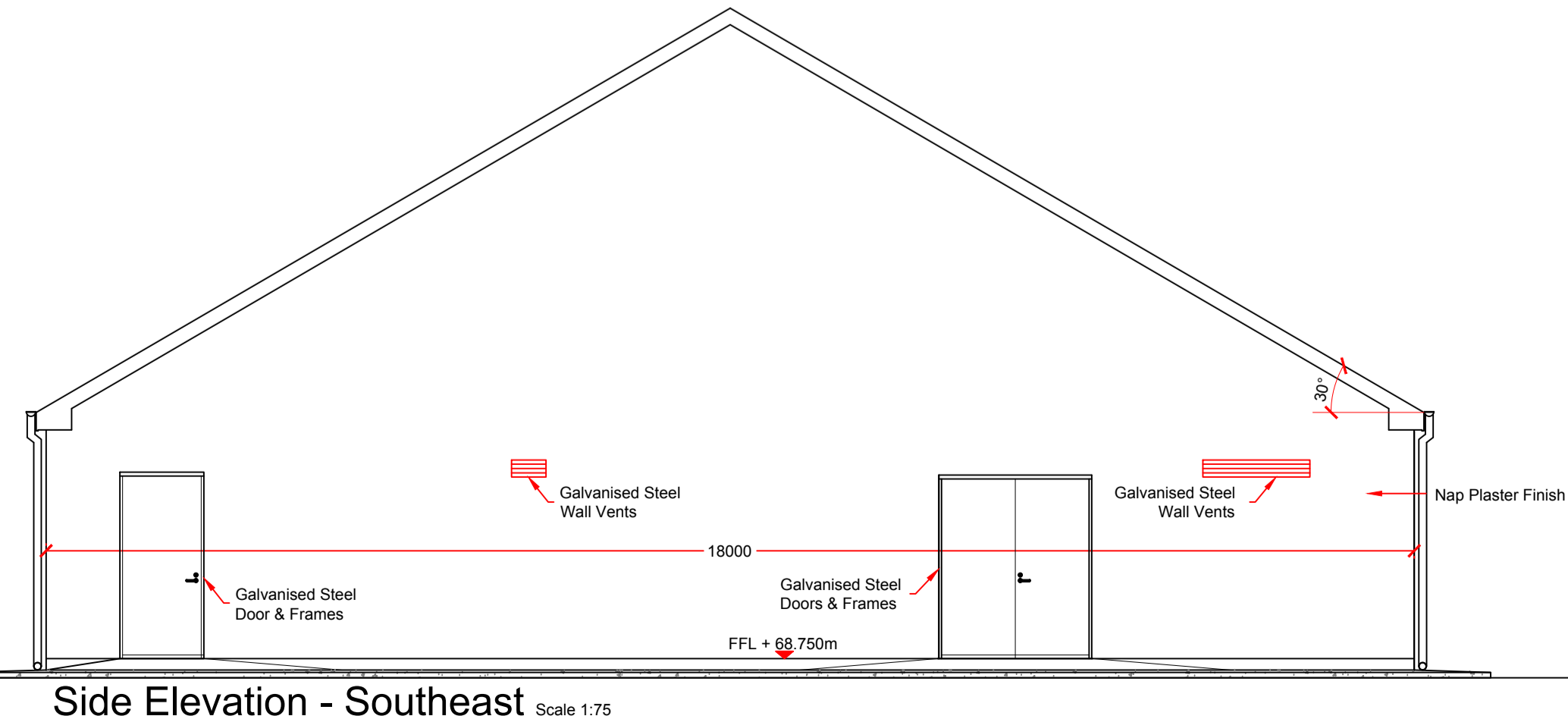
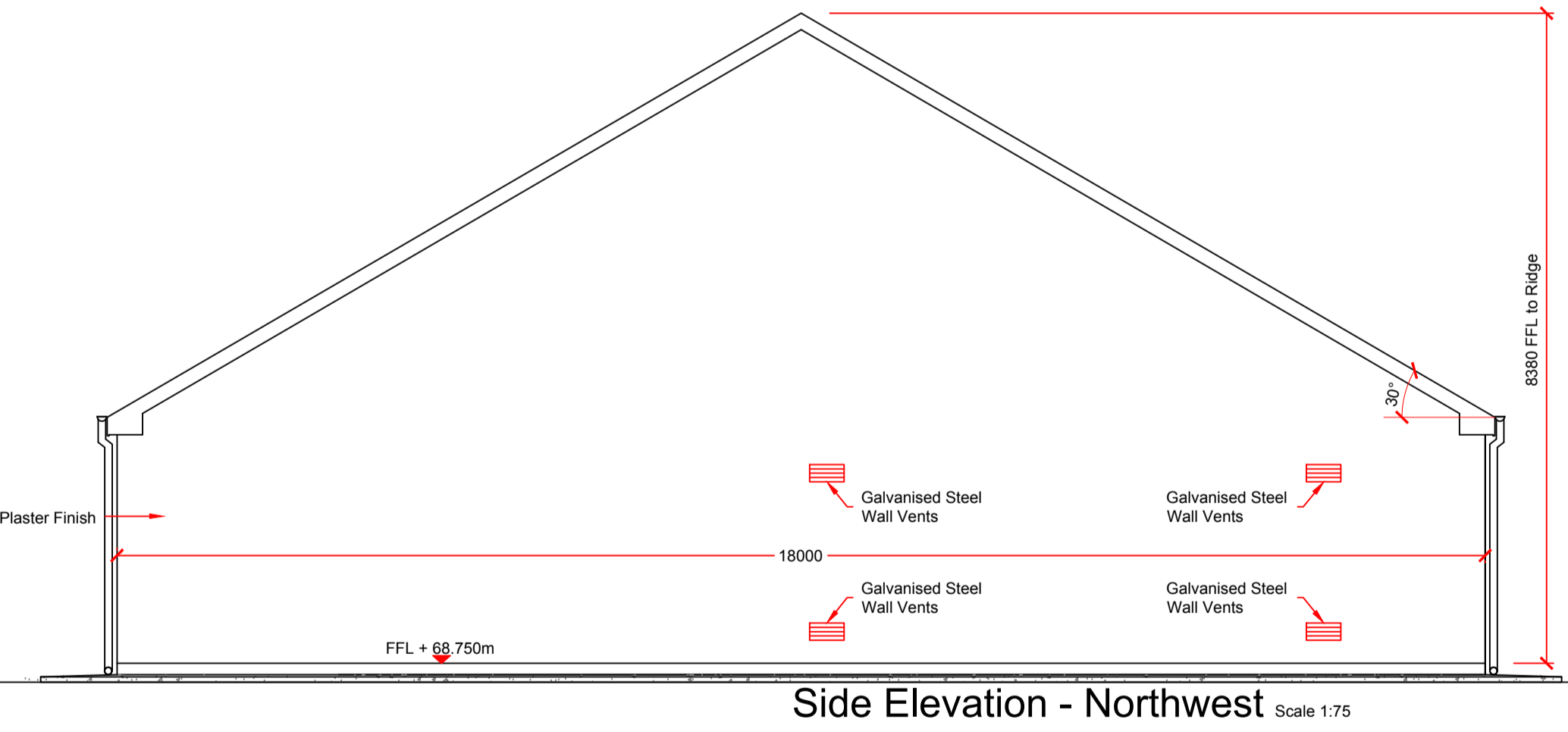
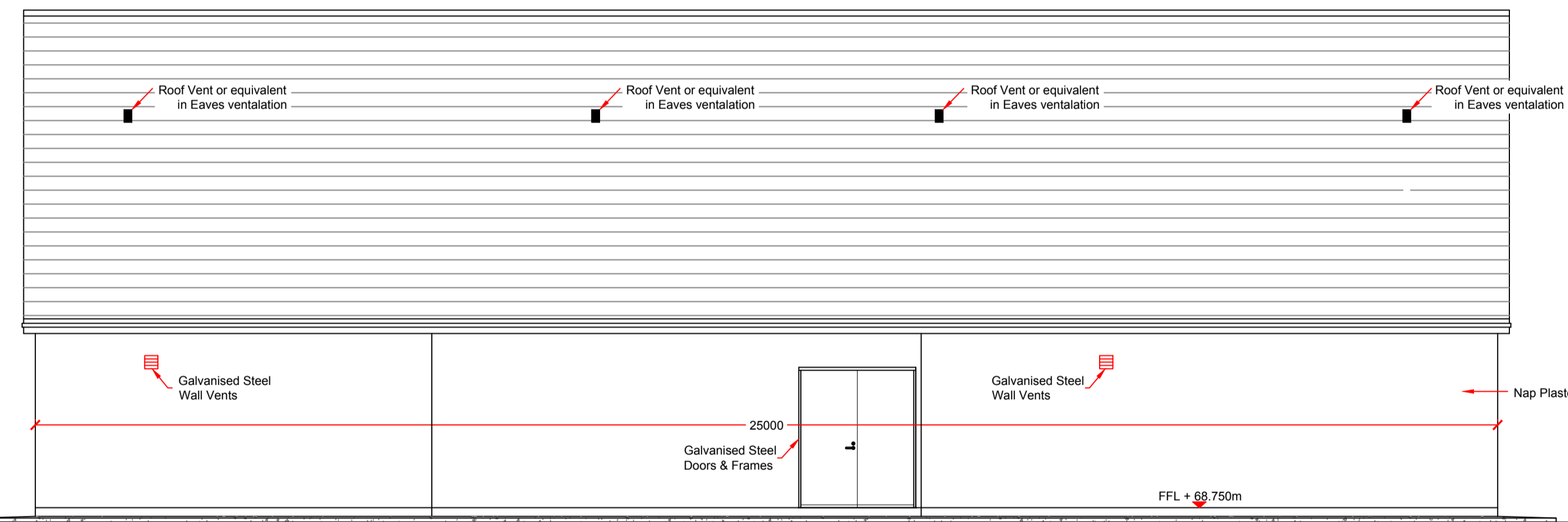
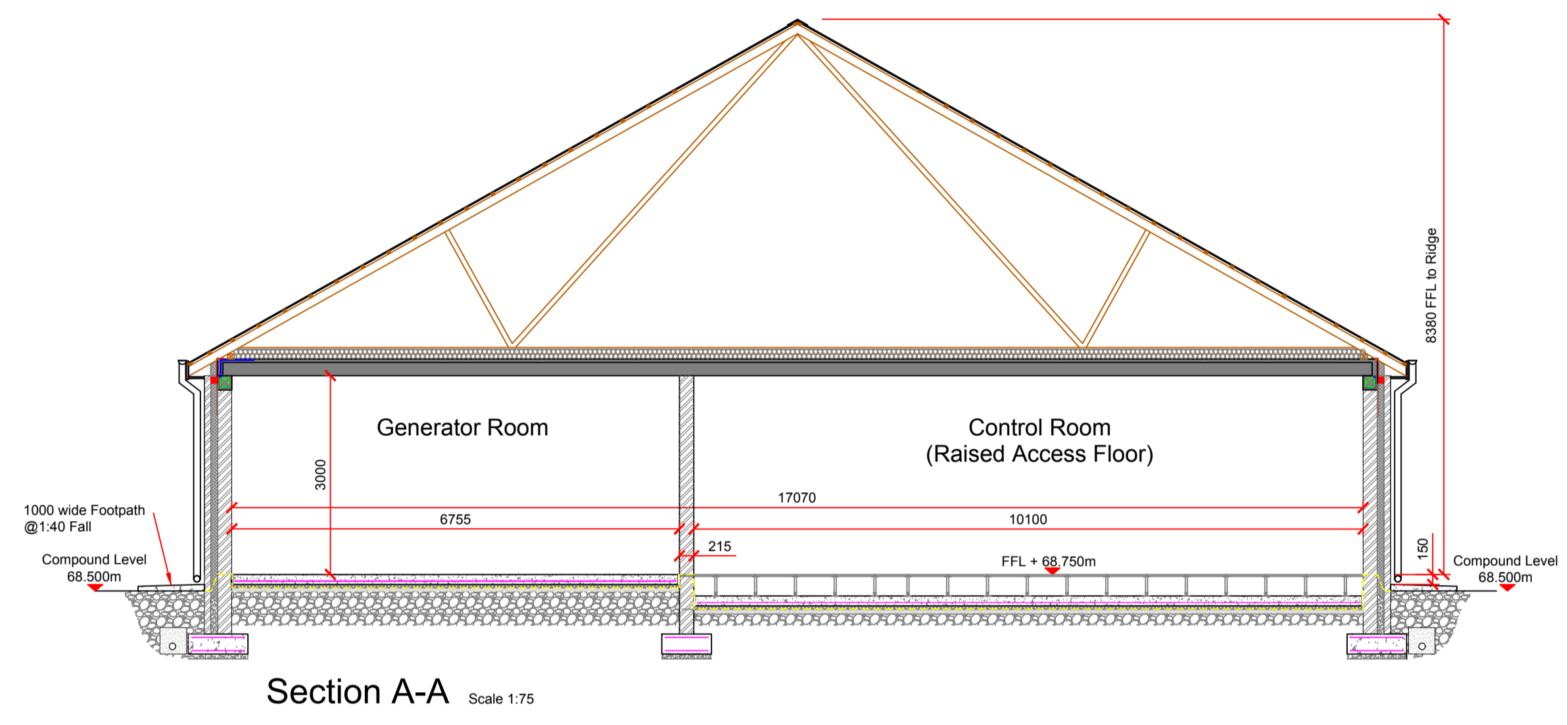
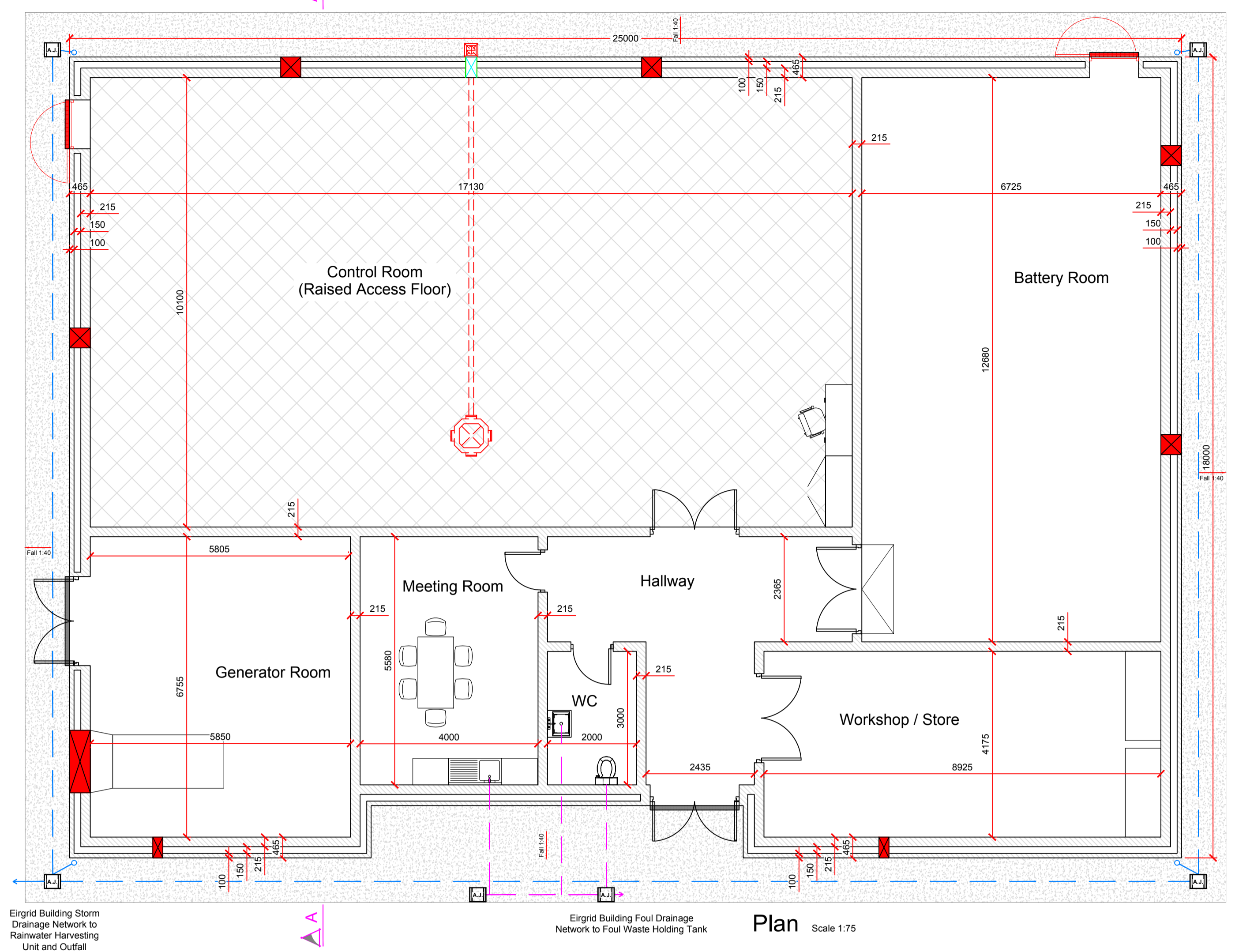


DO NOT SCALE FROM THIS DRAWING. USE FIGURED DIMENSIONS IN ALL CASES. VERIFY DIMENSIONS ON SITE AND REPORT ANY DISCREPANCIES TO THE DESIGNERS IMMEDIATELY.
 THIS DRAWING IS TO BE READ IN CONJUNCTION WITH THE DESIGNERS SPECIFICATION.
 © THIS DRAWING IS COPYRIGHT AND MAY ONLY BE REPRODUCED WITH THE DESIGNERS PERMISSION.

- NOTES:
1. ALL DRAWINGS ARE TO BE READ IN CONJUNCTION WITH ALL RELEVANT SPECIFICATIONS, BILLS OF QUANTITIES, ARCHITECTURAL, SERVICES AND ENGINEERING DRAWINGS.
 2. ALL LEVELS ARE IN METRES RELATED TO ORDNANCE DATUM MALIN HEAD.
 3. ANY DISCREPANCIES BETWEEN THESE DOCUMENTS SHALL BE BROUGHT TO THE ATTENTION OF THE ENGINEER.
 4. DRAWINGS ARE NOT TO BE SCALED.
 5. ALL DIMENSIONS ARE IN MILLIMETRES, UNLESS NOTED OTHERWISE.



REV	DATE	ISSUED FOR PLANNING	DESCRIPTION	JK	GT
P01	26/02/2021	ISSUED FOR PLANNING		JK	GT

PROJECT: Proposed Kilmuckridge 110kV Substation

TITLE: Proposed Substation Building - Plan, Elevations and Section

CLIENT: **Cloncant** Renewable Energy Limited

Malachy Walsh and Partners
 Engineering and Environmental Consultants
 Cork | Tralee | London | Limerick

Reen Point, Blennerville, Tralee, Co. Kerry, V92 X2TK
 Tel: +353 (0) 66 7123404
 Fax: +353 (0) 66 7125686
 E-mail: tralee@mwp.ie
 Web: www.mwp.ie

DRAWN: JK	CHECKED: GT	APPROVED: GT
DATE: January 2021	SCALE @ A1: As Shown	
PROJECT NUMBER: 21280	DRAWING STATUS: S2	

DRAWING NUMBER: 21280-MWP-00-00-DR-C-5404 REV: P01