



2nd - 6th Floor Plan - Part V
1 : 500



7th Floor Plan - Part V
1 : 500



Ground Floor - Part V - Entrance
1 : 500



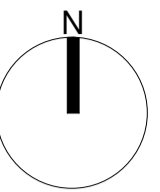
9th Floor Plan - Part V
1 : 500

Part V Apartments			
Level	Apartment No.	Apartment Type	
		Reference	Description
L02	B.L02.01	BBV201	2 Bed Apartmet
	B.L02.02	BBV101	1 Bed Apartment
	B.L02.03	BBV102	1 Bed Apartment
	B.L02.04	BBV001	Studio
	B.L02.05	BBV103A	1 Bed Apartment
	B.L02.06	BBV103B	1 Bed Apartment
	B.L02.07	BBV103	1 Bed Apartment
	B.L02.08	BBV103	2 Bed Apartment
	B.L02.09	BBV202	1 Bed Apartment
L03	B.L03.01	BBV201	2 Bed Apartment
	B.L03.02	BBV101	1 Bed Apartment
	B.L03.03	BBV102	1 Bed Apartment
	B.L03.04	BBV001	Studio
	B.L03.05	BBV103A	1 Bed Apartment
	B.L03.06	BBV103B	1 Bed Apartment
	B.L03.07	BBV103	1 Bed Apartment
	B.L03.08	BBV103	2 Bed Apartment
	B.L03.09	BBV202	1 Bed Apartment
L04	B.L04.01	BBV201	2 Bed Apartmet
	B.L04.02	BBV101	1 Bed Apartment
	B.L04.03	BBV102	1 Bed Apartment
	B.L04.04	BBV001	Studio
	B.L04.05	BBV103A	1 Bed Apartment
	B.L04.06	BBV103B	1 Bed Apartment
	B.L04.07	BBV103	1 Bed Apartment
	B.L04.08	BBV103	2 Bed Apartment
	B.L04.09	BBV202	1 Bed Apartment
L05	B.L05.01	BBV201	2 Bed Apartment
	B.L05.02	BBV101	1 Bed Apartment
	B.L05.03	BBV102	1 Bed Apartment
	B.L05.04	BBV001	Studio
	B.L05.05	BBV103A	1 Bed Apartment
	B.L05.06	BBV103B	1 Bed Apartment
	B.L05.07	BBV103	1 Bed Apartment
	B.L05.08	BBV103	2 Bed Apartment
	B.L05.09	BBV202	1 Bed Apartment
L06	B.L06.01	BBV201	2 Bed Apartment
	B.L06.02	BBV101	1 Bed Apartment
	B.L06.03	BBV102	1 Bed Apartment
	B.L06.04	BBV001	Studio
	B.L06.05	BBV103A	1 Bed Apartment
	B.L06.06	BBV103B	1 Bed Apartment
	B.L06.07	BBV103	1 Bed Apartment
	B.L06.08	BBV103	2 Bed Apartment
	B.L06.09	BBV202	1 Bed Apartment
L07	B.L07.01	BBV201	2 Bed Apartmet
	B.L07.02	BBV203	2 Bed Apartment
	B.L07.03	BBV001	Studio
	B.L07.04	BBV103A	1 Bed Apartment
	B.L07.05	BBV103B	1 Bed Apartment
	B.L07.06	BBV103	1 Bed Apartment
	B.L07.07	BBV202	2 Bed Apartment

Apartment Type Schedule						
Type Ref.	No. of beds		Floor Area m ²		Total No.	Percentage
	1	2	Required	Achieved		
BBV001	•		37	37	6	12%
BBV101	•		45	51	5	10%
BBV102	•		45	45	5	10%
BBV103	•		45	46.9	11	21%
BBV103A	•		45	51	6	12%
BBV103B	•		45	46	6	12%
BBV201		•	73	77	6	12%
BBV202		•	73	73	6	12%
BBV202		•	63	69	1	2%

Notes:
DO NOT SCALE FROM THIS DRAWING. USE FIGURED DIMENSIONS IN ALL CASES. VERIFY DIMENSIONS ON SITE AND REPORT ANY DISCREPANCIES TO THE ARCHITECTS IMMEDIATELY. THIS DRAWING TO BE READ IN CONJUNCTION WITH THE ARCHITECTS SPECIFICATION. © THIS DRAWING IS COPYRIGHT AND MAY ONLY BE REPRODUCED WITH THE ARCHITECTS PERMISSION.

OSI License Number - AR 005219
Projection / Spatial Reference:
Projection: IRENE190_3m_Transverse_Mercator
Centre Point Coordinates:
X/Y: 71367.3099,73403.2446
Reference Grid:
Map Series / Map Sheets
1:1,000 | 3263-02
1:1,000 | 3263-08
1:1,000 | 3263-07
1:1,000 | 3263-03
Vertical Datum:
MALIN HEAD



- 2 Bed Apartment
- 2 Bed Apartment (3p)
- 1 Bed Apartment
- Studio
- Amenity

P02	01/06/21	JB	Planning Issue
P01	02/12/20	DZ	Pre-Planning Issue

Rev	Date	DRN	Description
-----	------	-----	-------------

reddyarchitecture
+urbanism

Dirty Mills,
Dirty Road,
Dublin 6, D06 Y0E3.
T: +353 (0)1 4987000
W: www.reddyarchitecture.com
E: info@reddyarchitecture.com

IN ASSOCIATION WITH

Glenn Howells Architects

Birmingham London glennhowells.co.uk

Glenn Howells Architects T: +44 (0)121 666 7640
321 Barford Street W: www.glennhowells.co.uk
Birmingham B5 6ET E: mail@glennhowells.co.uk

Client Details:
Ruiside Developments Ltd.

Project Details:
PGATE
42A Parkgate Street, Dublin 8

Drawing Title:
Proposed Part V Plans

Job No	Date	Scale@A1
P18-107D	01/06/21	1:500
Status	Drawn By:	
Planning	M.McGuire	
Purpose:	Checked By:	
Planning Permission	E.O'Brien	
Drawing Number	Revision	
PGATE-RAU-ZZ-ZZ-DR-A-GAP-31060	P02	