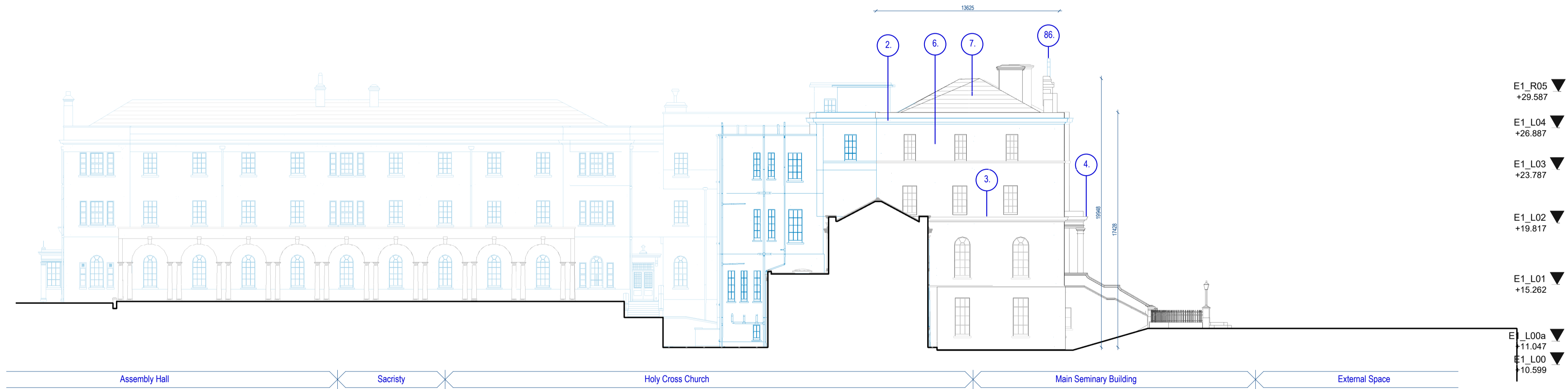


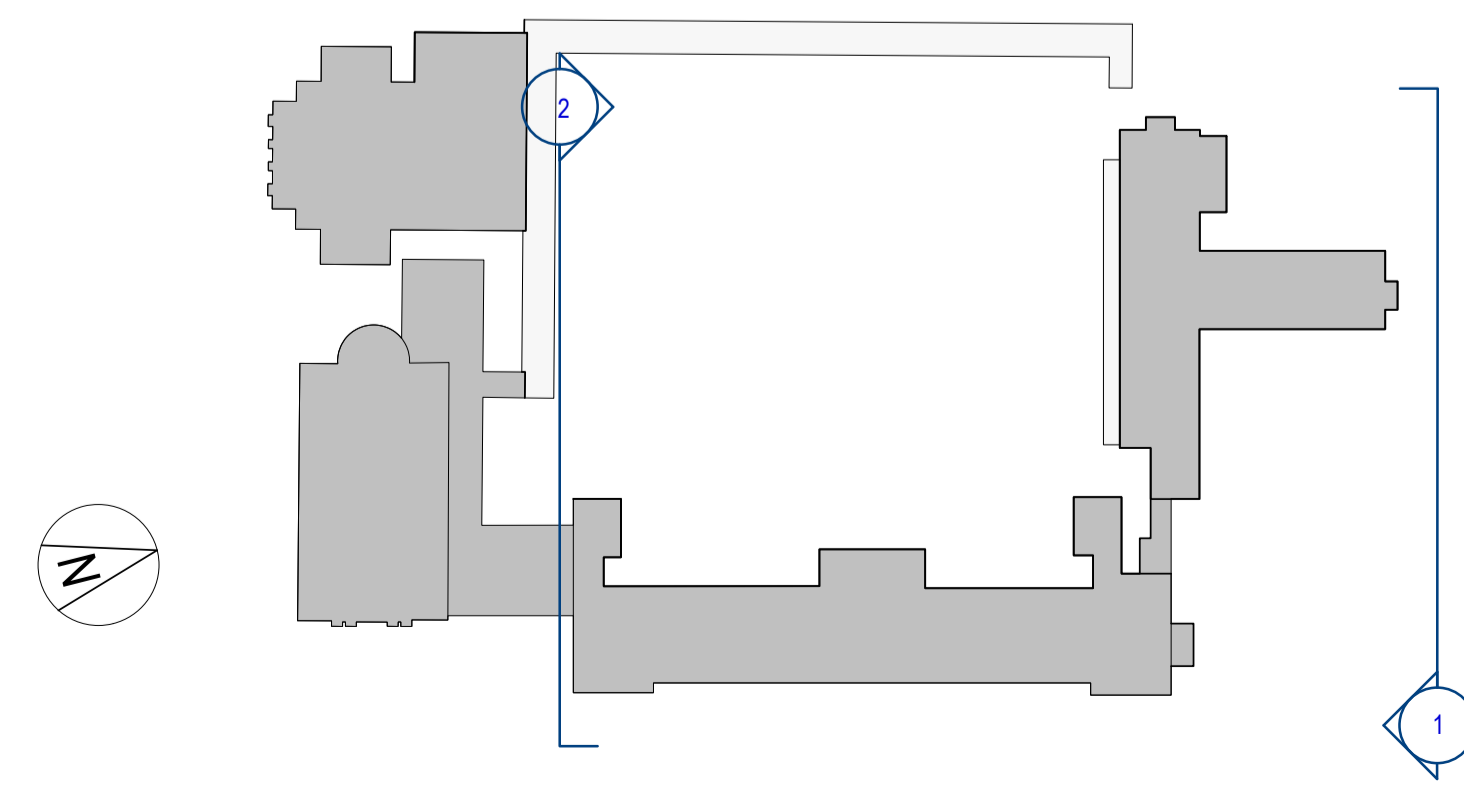
1 Seminary Building - North Elevation-Demolition
Scale - 1:200



2 Seminary Building - South Elevation-Demolition
Scale - 1:200

GENERAL NOTES

- *All taking down and removals to be carefully undertaken in accordance with Conservation Specifications by David Slattery Conservation Architects.*
- *Surviving original multi-pane sash windows to link building to be carefully conserved, retaining single panes of glass in accordance with Conservation Specifications by David Slattery Conservation Architects.*
- *Non-original 20th Century sash windows to Seminary to be spliced where beads and half cills are decayed. New stimplaze double glazed units to be fitted into existing sashes. All in accordance with detail drawings showing glazing bar profile impact and Conservation Specifications by David Slattery Conservation Architects.*
- *All services to Seminary to reuse existing routes where possible with any new routes and installations to be carried out in accordance with Conservation Specifications by David Slattery Conservation Architects.*
- *Minor repairs to leaded and stained glass in Assembly Hall are limited to repair of opening sections and glass replacement where panes are broken. No storm or secondary glazing proposed. All to be carried out in accordance with Conservation Specifications by David Slattery Conservation Architects.*
- *Stained glass over front entrance to chapel is set in a timber frame and is to be carefully removed to agreed location in accordance with Conservation Specifications by David Slattery Conservation Architects.*
- *Slate roofs to Seminary and Chapel to be restored using Blue Bangor slate and stepped lead valleys in accordance with Conservation Specifications by David Slattery Conservation Architects.*
- *All cast-iron rainwater goods to be retained and renewed with any replacements where goods are beyond repair to be cast iron. All in accordance with Conservation Specifications by David Slattery Conservation Architects.*
- *Render to be lightly cleaned with dilute biocide in accordance with Conservation Specifications by David Slattery Conservation Architects.*
- *Limestone strings and cills to be carefully cleaned using Doff or similar steam cleaning - no abrasive or chemical cleaning. All in accordance with Conservation Specifications by David Slattery Conservation Architects.*
- *Granite cills, cappings etc to be carefully cleaned using a light calcium carbonate abrasive in accordance with Conservation Specifications by David Slattery Conservation Architects.*
- *Wholesale repointing is not required and localised pointing where necessary will be carried out using a lime (NHL3.5) mortar and aggregate and lime mix to match existing bedding mortar tone and texture. All in accordance with Conservation Specifications by David Slattery Conservation Architects.*



P2	APR 21	Issued for Planning	DT	SP
P1	NOV 20	Issued for Pre-Application Consultation	DT	IB
REV	DATE	DESCRIPTION	CHK	DRN

STATUS CODE DESCRIPTION
ISSUED FOR PLANNING APPROVAL

APPLICANT NAME			
CWTC Multi Family ICAV acting on behalf of its sub-fund DBTR DR1 Fund			
PROJECT NAME			
Holy Cross College SHD			
LOCATION			
Holy Cross College, Clonliffe Road, Dublin 3 and Drumcondra Road Lower, Drumcondra, Dublin 9			
DRAWING			
Seminary Building - Demolition Elevations			
PROJECT NUMBER		DATE	
CLN-MCM-00-ZZ-M3-A-C0003		06/02/20	
SCALE@ A1:		DRAWN/CHECKED:	
As indicated		IB/ ROC	
STATUS CODE:	DRAWING NUMBER	REVISION	
A1	CLN-MCM-E1-ZZ-DR-A-D-111	P2	

Henry J Lyons
Architecture + Interiors
henrylyons.com +353 1 888 3333 info@henrylyons.com 51-54 Pearse Street Dublin D02 KA66



O'Donnell+Tuomey

mcculloughmulvinarchitects

NMP
Niall Montgomery + Partners

o'mahony pike

BM
BARRETT MAHONY

