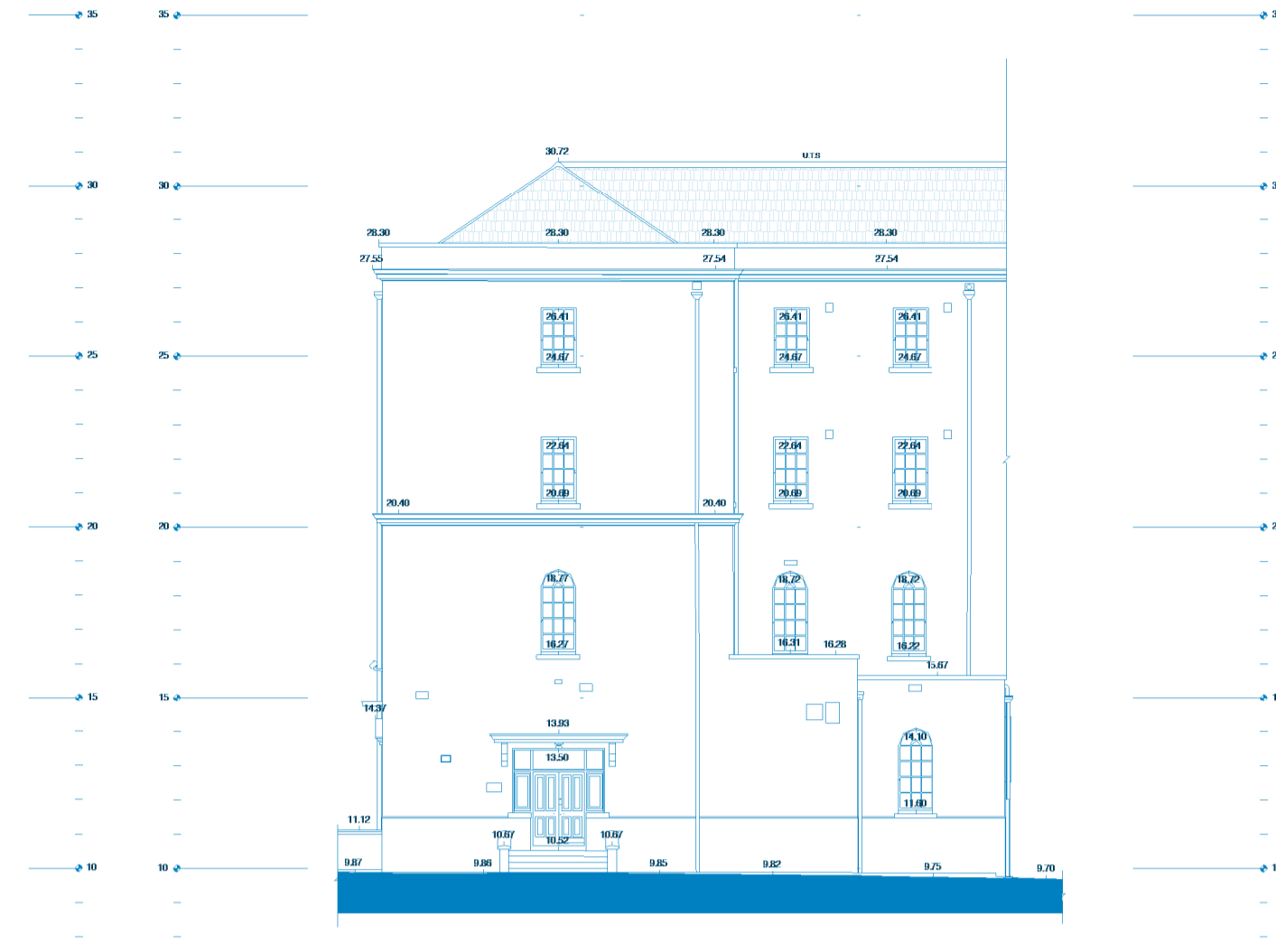
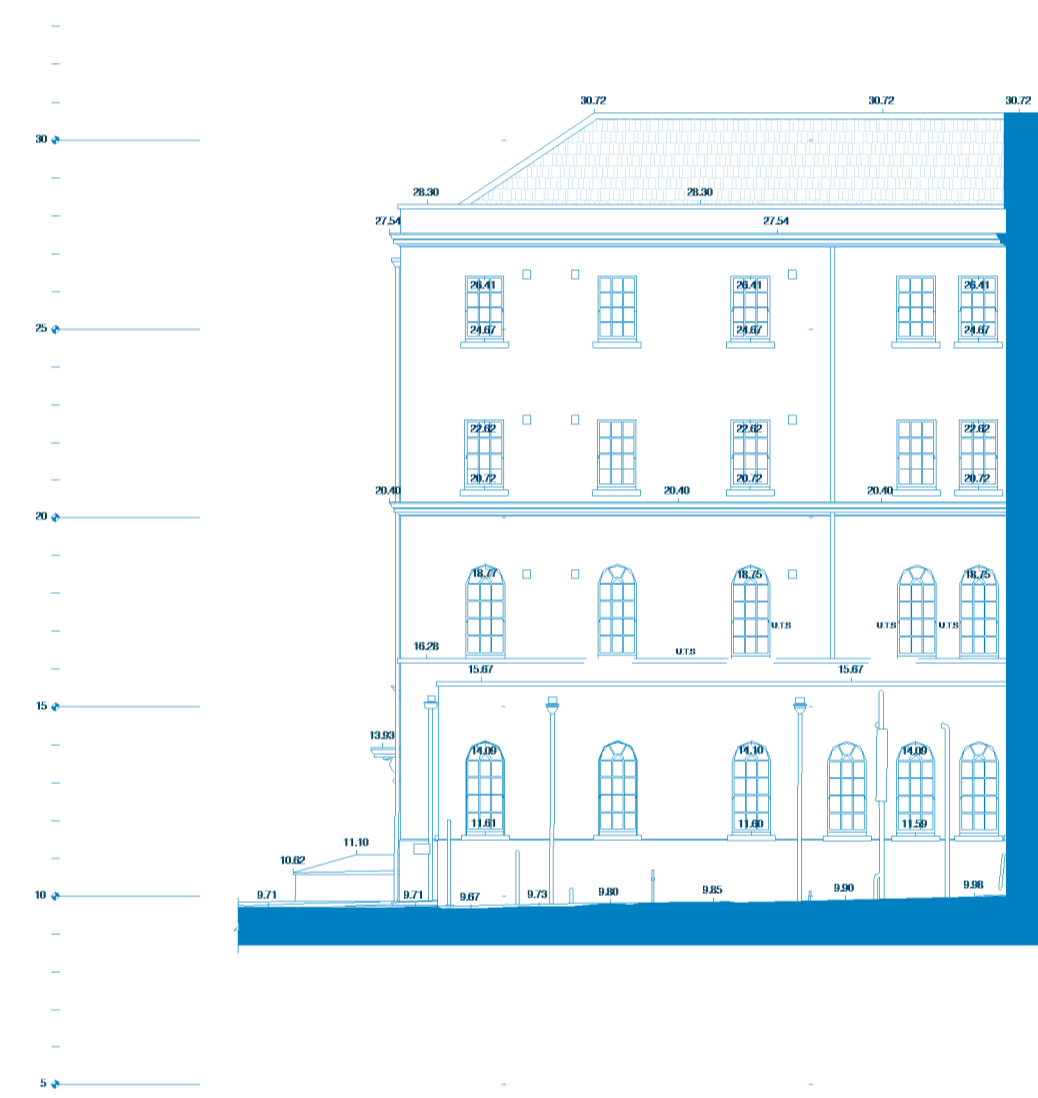


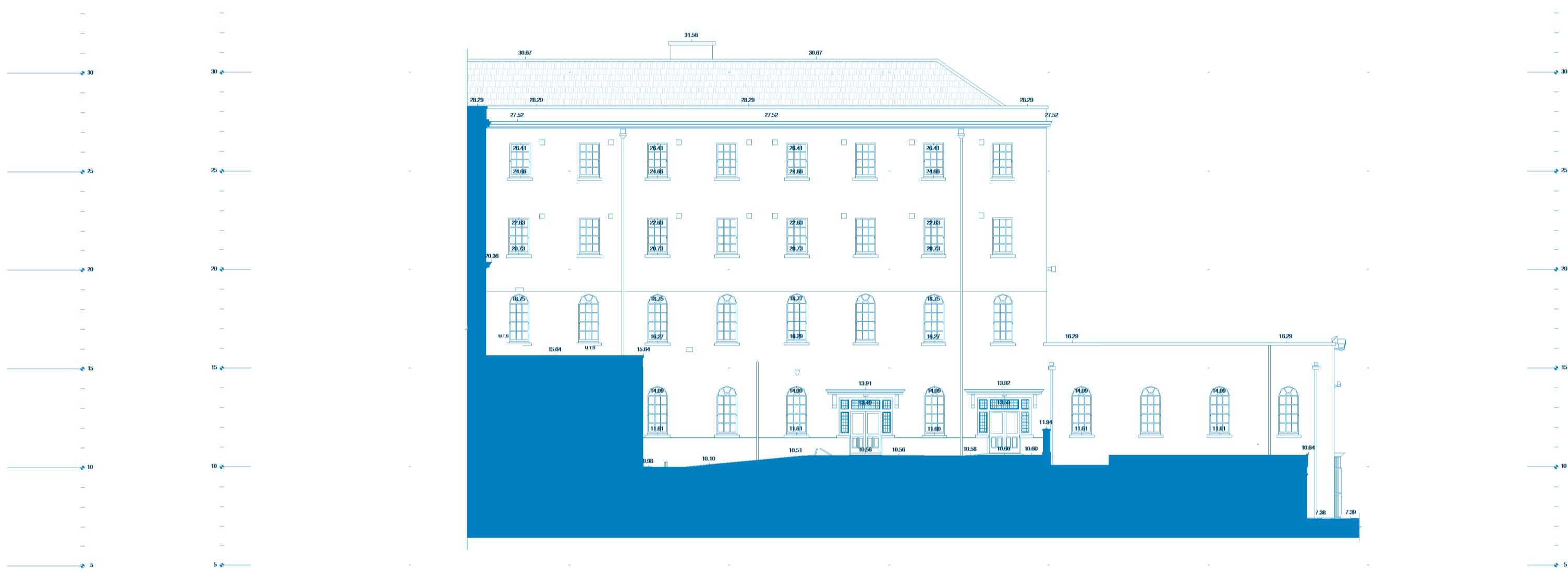
**1** Library Wing - South Elevation E1 Demolition  
 Scale - 1 : 200



**2** Library Wing - East Elevation E2 Demolition  
 Scale - 1 : 200



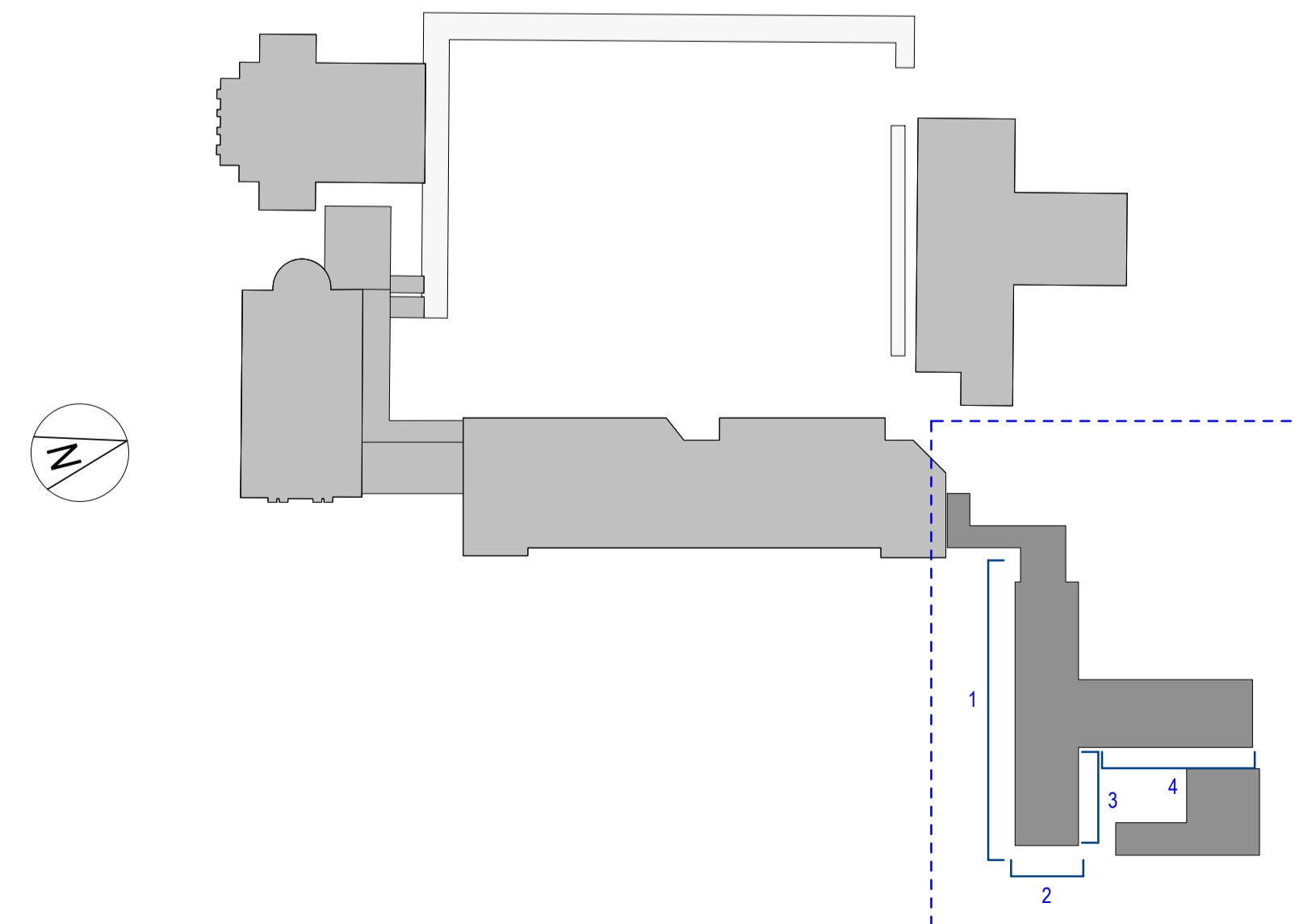
**3** Library Wing - North Elevation E3 Demolition  
 Scale - 1 : 200



**4** Library Wing - East Elevation E4 Demolition  
 Scale - 1 : 200

**GENERAL NOTES**

- "All taking down and removals to be carefully undertaken in accordance with Conservation Specifications by David Slattery Conservation Architects."
- "Surviving original multi-pane sash windows to link building to be carefully conserved, retaining single panes of glass in accordance with Conservation Specifications by David Slattery Conservation Architects."
- "Non-original 20th Century sash windows to Seminary to be spliced where beads and half cills are decayed. New slimglaze double glazed units to be fitted into existing sashes. All in accordance with detail drawings showing glazing bar profile impact and Conservation Specifications by David Slattery Conservation Architects."
- "All services to Seminary to reuse existing routes where possible with any new routes and installations to be carried out in accordance with Conservation Specifications by David Slattery Conservation Architects."
- "Minor repairs to leaded and stained glass in Assembly Hall are limited to repair of opening sections and glass replacement where panes are broken. No storm or secondary glazing proposed. All to be carried out in accordance with Conservation Specifications by David Slattery Conservation Architects."
- "Stained glass over front entrance to chapel is set in a timber frame and is to be carefully removed to agreed location in accordance with Conservation Specifications by David Slattery Conservation Architects."
- "Slate roofs to Seminary and Chapel to be restored using Blue Bangor slate and stepped lead valleys in accordance with Conservation Specifications by David Slattery Conservation Architects."
- "All cast-iron rainwater goods to be retained and renewed with any replacements where goods are beyond repair to be in cast iron. All in accordance with Conservation Specifications by David Slattery Conservation Architects."
- "Render to be lightly cleaned with dilute biocide in accordance with Conservation Specifications by David Slattery Conservation Architects."
- "Limestone strings and cills to be carefully cleaned using Doff or similar steam cleaning - no abrasive or chemical cleaning. All in accordance with Conservation Specifications by David Slattery Conservation Architects."
- "Granite cills, cappings etc to be carefully cleaned using a light calcium carbonate abrasive in accordance with Conservation Specifications by David Slattery Conservation Architects."
- "Wholesale repointing is not required and localised pointing where necessary will be carried out using a lime (NH13.5) mortar and aggregate and lime mix to match existing bedding mortar tone and texture. All in accordance with Conservation Specifications by David Slattery Conservation Architects."



REV	DATE	DESCRIPTION	CHK	SP	DRN
P1	APR 21	Issued for Planning		DT	SP

STATUS CODE DESCRIPTION  
**ISSUED FOR PLANNING APPROVAL**

APPLICANT NAME  
 CWTC Multi Family ICAV acting on behalf of its sub-fund DBTR DR1 Fund

PROJECT NAME  
 Holy Cross College SHD

LOCATION  
 Holy Cross College, Clonliffe Road, Dublin 3 and Drumcondra Road Lower, Drumcondra, Dublin 9

DRAWING  
**Library Wing - Demolition Elevations**

PROJECT NUMBER CLN-MCM-00-ZZ-M3-A-C0003	DATE 05/06/21
SCALE@ A1: As indicated	DRAWN/CHECKED: EC/ FG
STATUS CODE: A1	DRAWING NUMBER CLN-MCM-E1-ZZ-DR-A-D-121
	REVISION P1

**Henry J Lyons**

Architecture + Interiors +353 1 888 3333 51-54 Pearse Street  
 henrylyons.com info@henrylyons.com Dublin D02 KA66

**VIRTUS**

**O'Donnell+Tuomey**

mcculloughmulvinarchitects

**NMP**  
 Niall Montgomery + Partners

**o'mahony pike**

**BM**  
 BARRETT MAHONY

**OCSC**  
 O'Connell & Slattery