

**GENERAL NOTES**

"All taking down and removals to be carefully undertaken in accordance with Conservation Specifications by David Statter Conservation Architects."

"Surviving original multi-pane sash windows to link building to be carefully conserved, retaining single panes of glass in accordance with Conservation Specifications by David Statter Conservation Architects."

"Non-original 20th Century sash windows to Seminary to be spliced where beads and half cills are decayed. New single-pane double glazed units to be fitted into existing sashes. All in accordance with detail drawings showing glazing bar profile impact and Conservation Specifications by David Statter Conservation Architects."

"All services to Seminary to reuse existing routes where possible with any new routes and installations to be carried out in accordance with Conservation Specifications by David Statter Conservation Architects."

"Minor repairs to leaded and stained glass in Assembly Hall are limited to repair of opening sections and glass replacement where panes are broken. No storm or secondary glazing proposed. All to be carried out in accordance with Conservation Specifications by David Statter Conservation Architects."

"Stained glass over front entrance to chapel to set in a timber frame and to be carefully removed to agreed location in accordance with Conservation Specifications by David Statter Conservation Architects."

"Slate roofs to Seminary and Chapel to be restored using Blue Bangor slate and stepped lead valleys in accordance with Conservation Specifications by David Statter Conservation Architects."

"All cast-iron rainwater goods to be retained and renewed with any replacements where goods are beyond repair to be in cast iron. All in accordance with Conservation Specifications by David Statter Conservation Architects."

"Render to be lightly cleaned with dilute biocide in accordance with Conservation Specifications by David Statter Conservation Architects."

"Limestone strings and cills to be carefully cleaned using Duff or similar steam cleaning - no abrasive or chemical cleaning. All in accordance with Conservation Specifications by David Statter Conservation Architects."

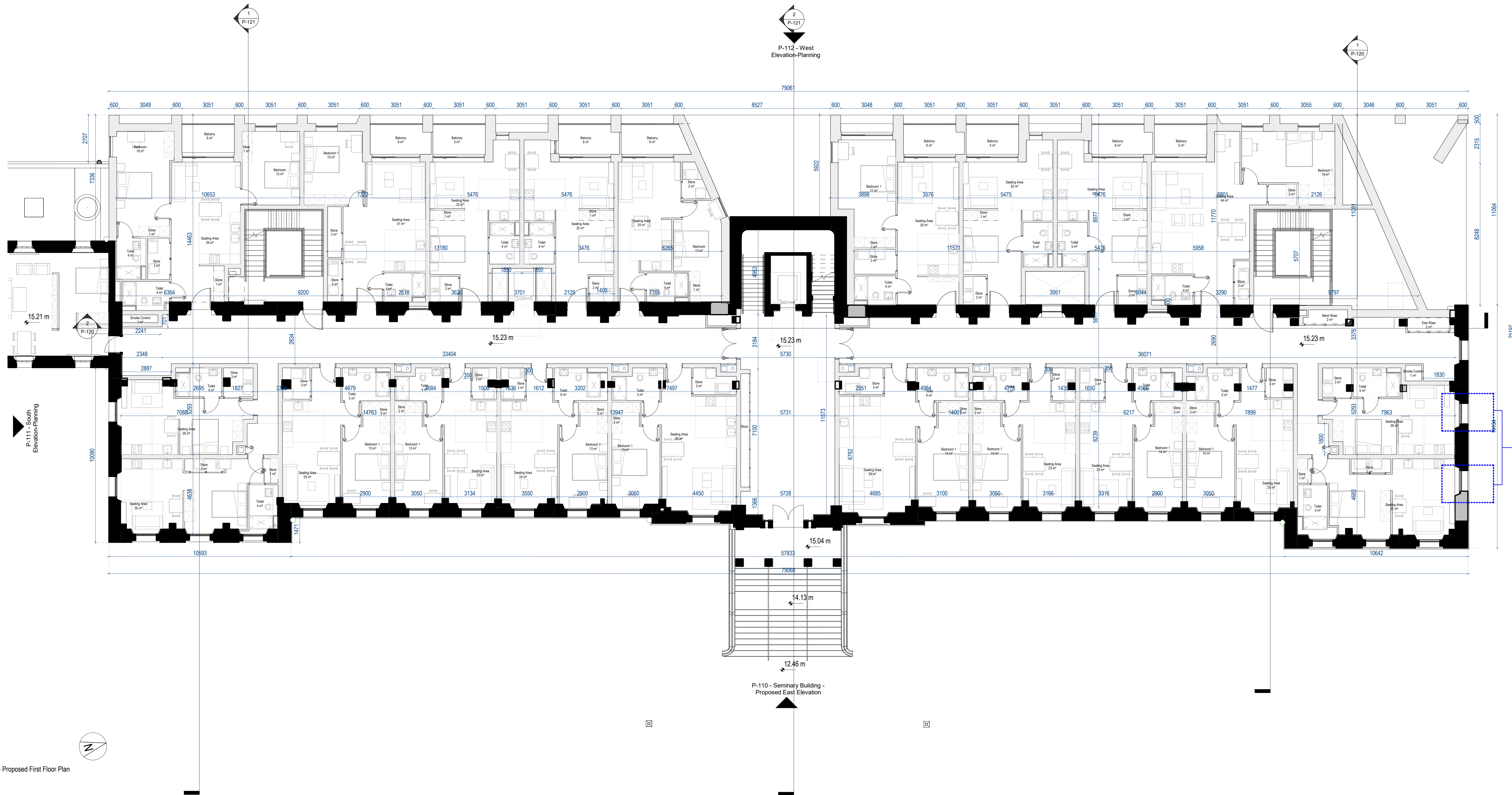
"Granite cills, copings etc. to be carefully cleaned using a light calcium carbonate abrasive in accordance with Conservation Specifications by David Statter Conservation Architects."

"Wholesale repointing is not required and localized pointing where necessary will be carried out using a lime (M4.3) mortar and aggregate and lime mix to match existing bedding mortar tone and texture. All in accordance with Conservation Specifications by David Statter Conservation Architects."

**DRAWING LEGEND**

EXISTING

PROPOSED

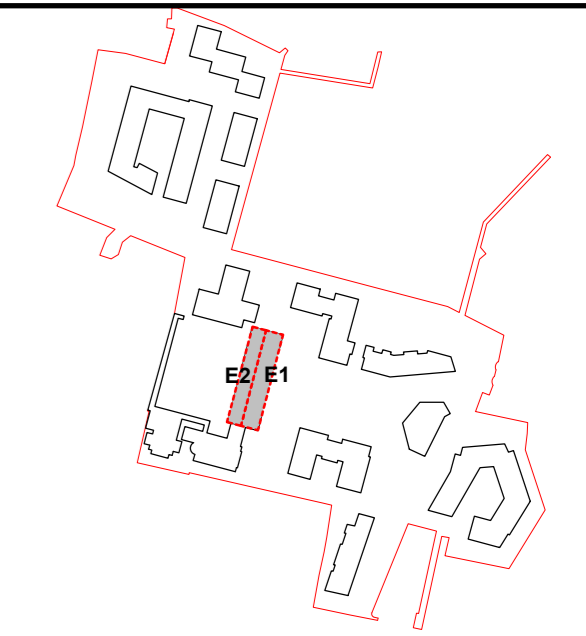


1 Seminary Building - Proposed First Floor Plan  
Scale: 1:100

ALL DIMENSIONS TO BE CHECKED ON SITE  
NO DIMENSIONS TO BE SCALED FROM THIS DRAWING  
DRAWING IS TO BE READ IN CONJUNCTION WITH RELEVANT CONSULTANTS DRAWINGS

A0

N  
1



P2	APR 21	Issued for Planning	DT	SP
P1	NOV 20	Issued for Pre-Application Consultation	DT	IB
REV	DATE	DESCRIPTION	DT	DRN

ISSUED FOR PLANNING APPROVAL

APPLICANT NAME

CWTC Multi Family (CAV) acting on behalf of its sub-kind DBTR DR1 Fund

PROJECT NAME

166 Clonsilla, Clonsilla, B90

LOCATION

Holy Cross College, Carville Road, Dublin 3 and Drumcondra Road Lower, Drumcondra, Dublin 9

DRAWING

Seminary Building - Proposed First Floor Plan

PROJECT NUMBER	DATE
CLN-MCM-00-ZZ-MS-A-0003	06/02/20
SCALE @ A0	DRAWN/CHECKED
As indicated	IB/ROC

STATUS CODE	DRAWING NUMBER	REVISION
A1	CLN-MCM-E1-ZZ-DR-A-P-101	P2

**Henry J Lyons**  
Architecture + Interiors  
henryjlyons.com

+353 1 889 3333  
51-54 Pearse Street  
Dublin D02 X466

**VIRTUS**

O'Donnell+Tuomey

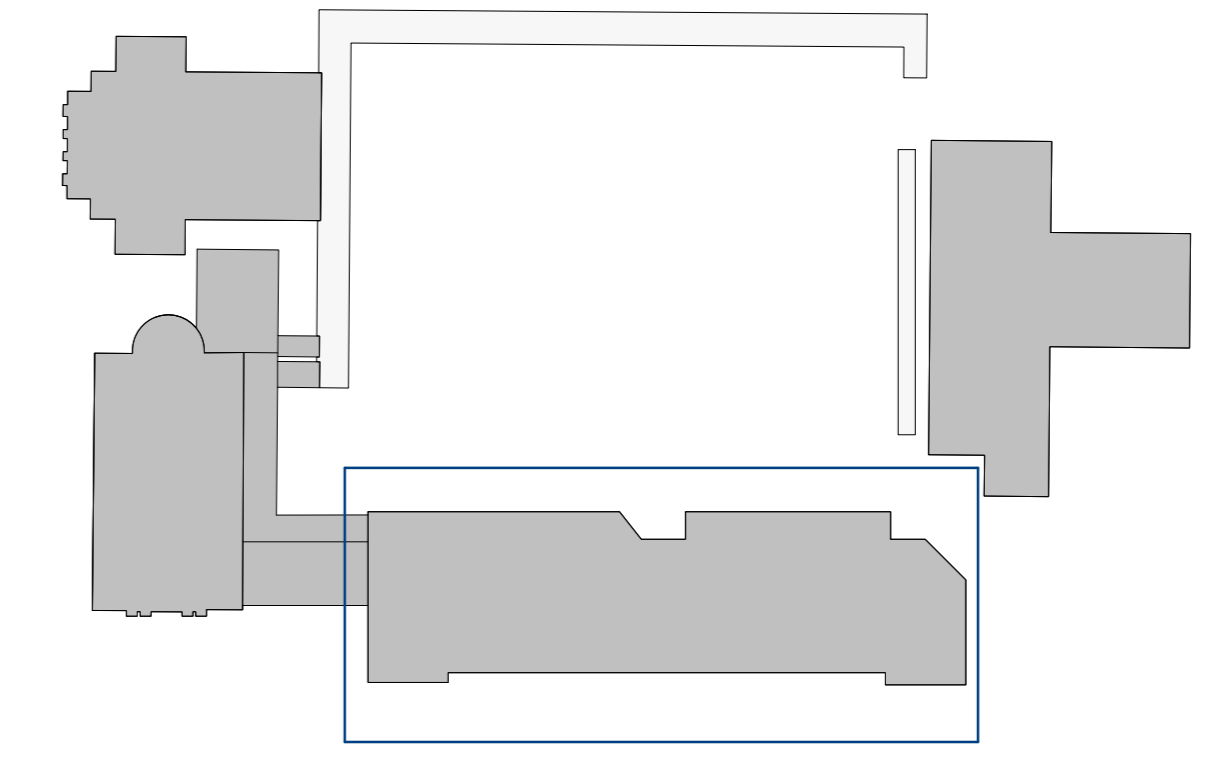
mcculloughmulvinarchitects

**NMP**  
Niall Management + Planning

**mahony pike**

**BM**  
BARRETT MANDRY

**OCSC**



N