

GENERAL NOTES
 All taking down and rework to be carefully undertaken in accordance with Conservation Specifications by David Slattery Conservation Architects.

Surviving original multi-pane sash windows to be carefully preserved, retaining single panes of glass in accordance with Conservation Specifications by David Slattery Conservation Architects.

Non-original 20th Century sash windows to Seminary to be applied where beads and half cills are damaged. New sashpanes double glazed units to be fitted into existing sockets. All in accordance with detail drawings showing glazing bar profile impact and Conservation Specifications by David Slattery Conservation Architects.

All services to Seminary to reuse existing routes where possible with any new routes and installations to be carried out in accordance with Conservation Specifications by David Slattery Conservation Architects.

Minor repairs to leaded and stained glass in Assembly Hall are limited to repair of opening sections and glass replacement where panes are broken. No storm or secondary glazing proposed. All to be carried out in accordance with Conservation Specifications by David Slattery Conservation Architects.

Stained glass over front entrance to chapel is set in a timber frame and is to be carefully removed to agreed location in accordance with Conservation Specifications by David Slattery Conservation Architects.

Slate roofs to Seminary and Chapel to be restored using Blue Bangor slate and stopped lead valleys in accordance with Conservation Specifications by David Slattery Conservation Architects.

All cast-iron rainwater goods to be retained and renewed with any replacements where goods are beyond repair to be in cast iron. All in accordance with Conservation Specifications by David Slattery Conservation Architects.

Render to be lightly cleaned with alkali bicocide in accordance with Conservation Specifications by David Slattery Conservation Architects.

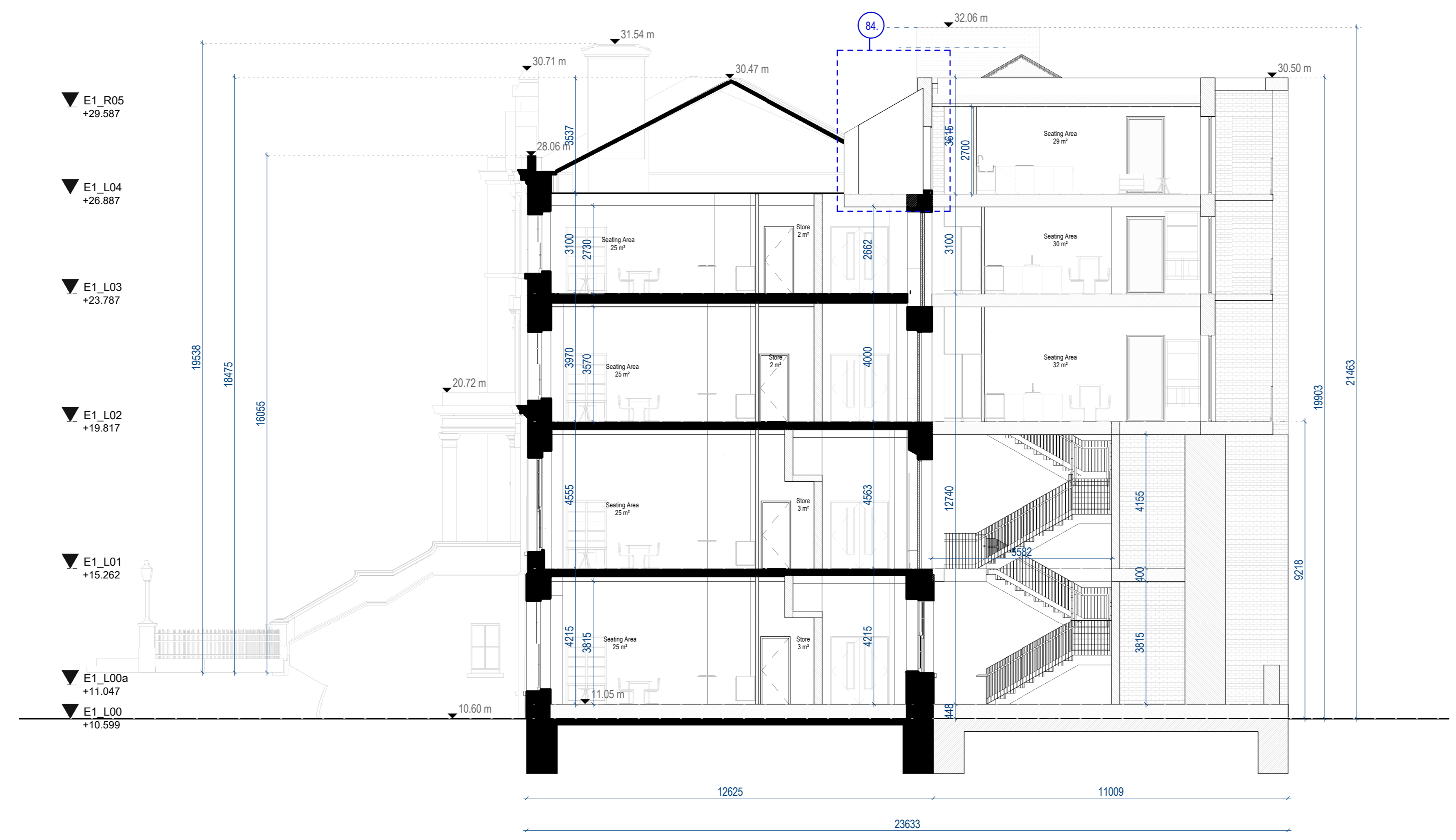
Limestone strings and cills to be carefully cleaned using Doff or similar steam cleaning - no abrasive or chemical cleaning. All in accordance with Conservation Specifications by David Slattery Conservation Architects.

Granite cills, cappings etc to be carefully cleaned using a light calcium carbonate abrasive in accordance with Conservation Specifications by David Slattery Conservation Architects.

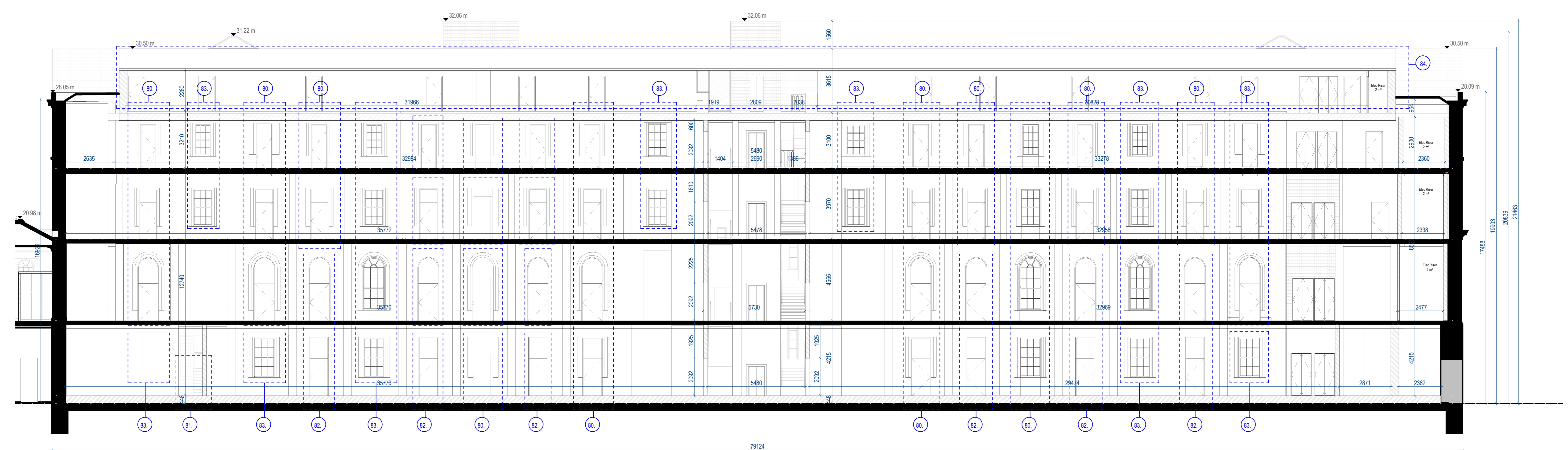
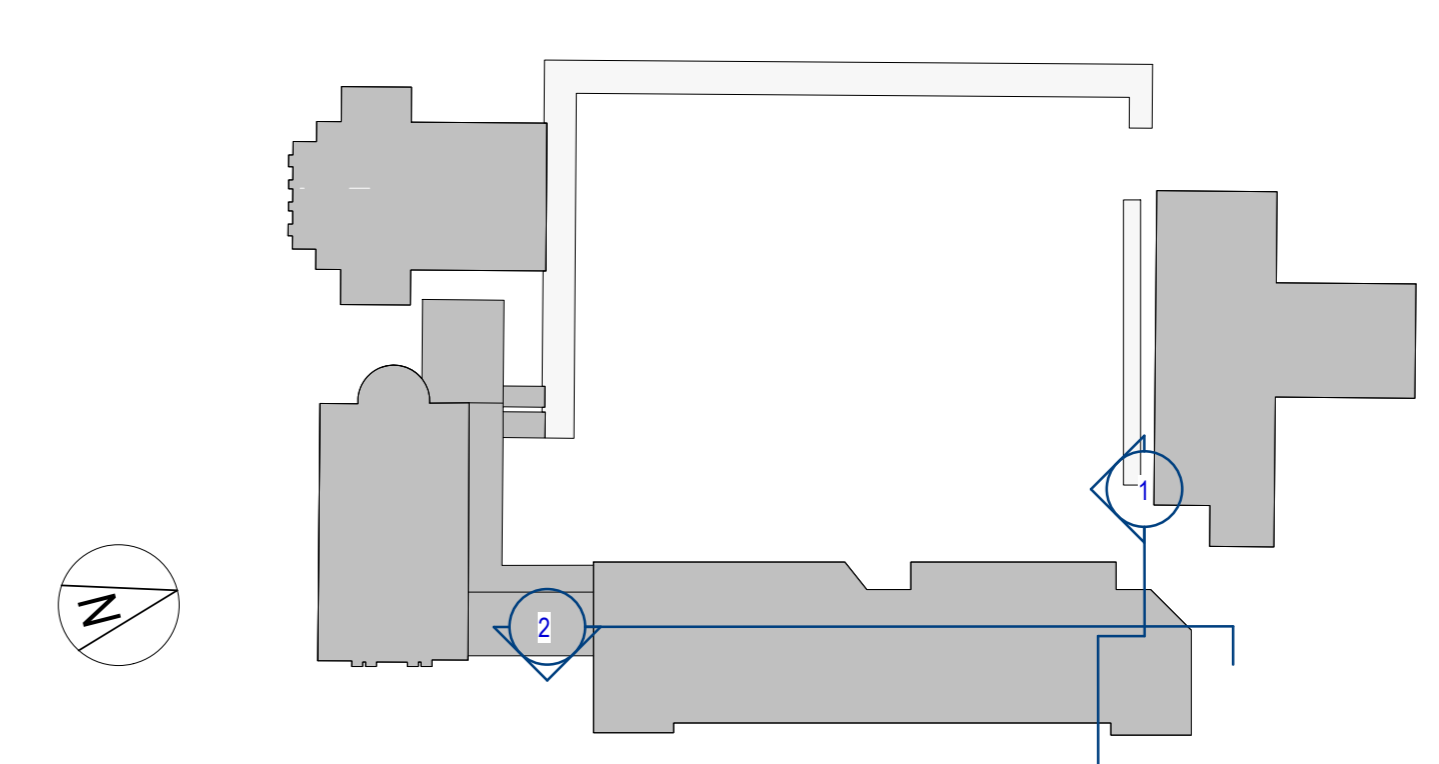
Wholesale repointing is not required and localised pointing where necessary will be carried out using a fine (M2.5) mortar and aggregate and lime mix to match existing bedding mortar base and texture. All in accordance with Conservation Specifications by David Slattery Conservation Architects.

DRAWING LEGEND

- EXISTING
- PROPOSED



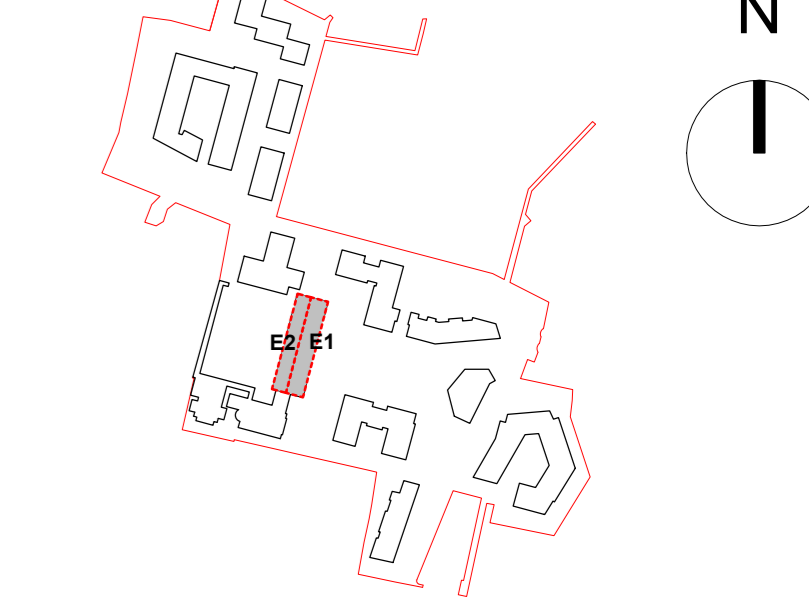
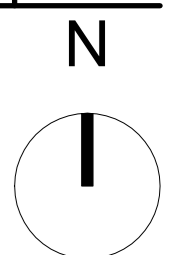
1 Seminary Building - Proposed Section AA
 Scale: 1:100



2 Seminary Building - Proposed Section BB
 Scale: 1:100

ALL DIMENSIONS TO BE CHECKED ON SITE
 NO DIMENSIONS TO BE SCALED FROM THIS DRAWING
 DRAWINGS TO BE READ IN CONJUNCTION WITH RELEVANT CONSULTANT DRAWINGS

A0



REV	DATE	DESCRIPTION	DT	IB	DRN
P2	APR 21	Issued for Planning			SP
P1	NOV 20	Issued for Pre-Application Consultation			IB

ISSUED FOR PLANNING APPROVAL

APPLICANT NAME
 CWTC Multi Family ICAV acting on behalf of the sub-kind DBTR DR1 Fund

PROJECT NAME
 186-Clonsilla College BPO

LOCATION
 Holy Cross College, Conville Road, Dublin 3 and Drumcondra Road Lower, Drumcondra, Dublin 9

DRAWING
Seminary Building - Proposed Sections

PROJECT NUMBER	DATE
CLN-MCM-00-ZZ-MG-A-0003	06/02/20

SCALE @ AD	DRAWN/CHECKED
As indicated	IB/ROC

STATUS CODE	DRAWING NUMBER	REVISION
A1	CLN-MCM-E1-ZZ-DR-A-P-120	P2

Henry J Lyons
 Architecture + Interiors
 +353 1 888 3333
 henryjlyons.com

VIRTUS
 O'Donnell+Tuomey

mcculloughmulvinarchitects

NMP
 Niall Mannix + Partners

mahony pike

BM
 BARRETT MANDY

OCSC