

GENERAL NOTES

"All taking down and removals to be carefully undertaken in accordance with Conservation Specifications by David Stalley Conservation Architects."

"Surviving original multi-pane sash windows to be carefully conserved, retaining single panes of glass in accordance with Conservation Specifications by David Stalley Conservation Architects."

"Non-original 20th Century sash windows to be spliced where beads and half cills are decayed. New aluminium double glazed units to be fitted into existing sashes. All in accordance with detail drawings showing glazing bar profile impact and Conservation Specifications by David Stalley Conservation Architects."

"All services to Seminary to reuse existing routes where possible with any new routes and installations to be carried out in accordance with Conservation Specifications by David Stalley Conservation Architects."

"Minor repairs to leaded and stained glass in Assembly Hall are limited to repair of opening sections and glass replacement where panes are broken. No storm or secondary glazing proposed. All to be carried out in accordance with Conservation Specifications by David Stalley Conservation Architects."

"Stained glass over front entrance to chapel is set in a timber frame and is to be carefully removed to agreed location in accordance with Conservation Specifications by David Stalley Conservation Architects."

"Slate roofs to Seminary and Chapel to be restored using Blue Bangor slate and stepped lead valleys in accordance with Conservation Specifications by David Stalley Conservation Architects."

"All cast-iron rainwater goods to be retained and renewed with any replacements where goods are beyond repair to be in cast iron. All in accordance with Conservation Specifications by David Stalley Conservation Architects."

"Render to be lightly cleaned with dilute biocide in accordance with Conservation Specifications by David Stalley Conservation Architects."

"Limestone strigs and cills to be carefully cleaned using Duff or similar steam cleaning - no abrasive or chemical cleaning. All in accordance with Conservation Specifications by David Stalley Conservation Architects."

"Granite cills, cappings etc to be carefully cleaned using a light calcium carbonate abrasive in accordance with Conservation Specifications by David Stalley Conservation Architects."

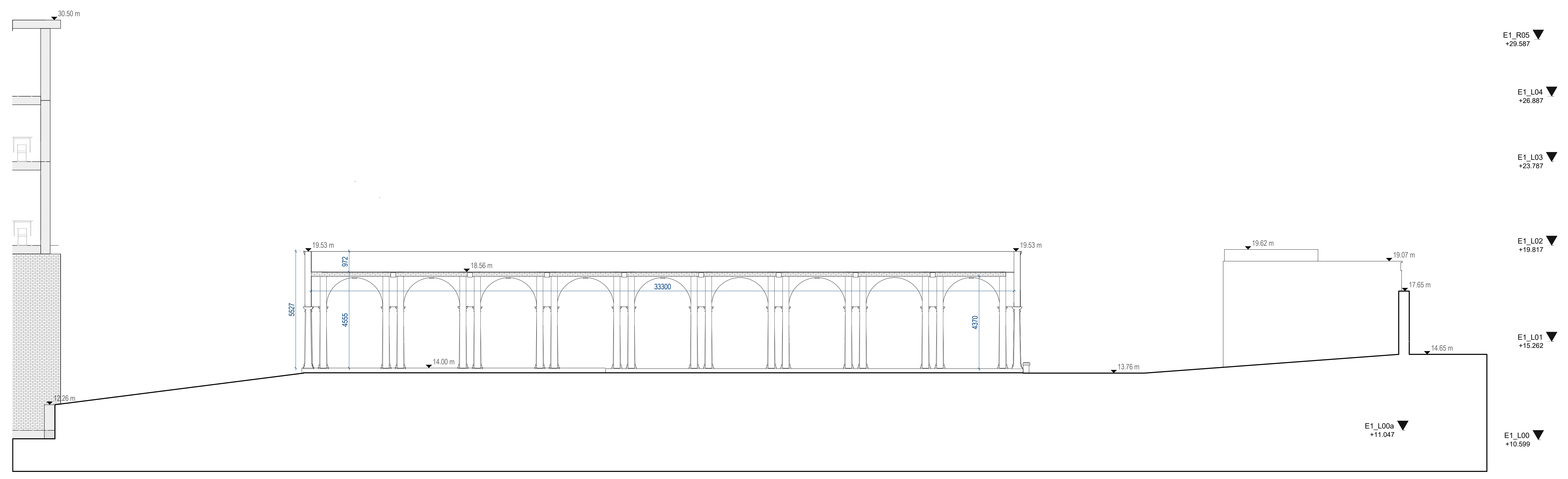
"Wholesale repointing is not required and localised pointing where necessary will be carried out using a lime (Mk2.0) mortar and aggregate and lime mix to match existing bedding mortar tone and texture. All in accordance with Conservation Specifications by David Stalley Conservation Architects."

ALL DIMENSIONS TO BE CHECKED ON SITE
NO DIMENSIONS TO BE SCALED FROM THIS DRAWING
DRAWINGS TO BE READ IN CONJUNCTION WITH RELEVANT CONSULTANT DRAWINGS

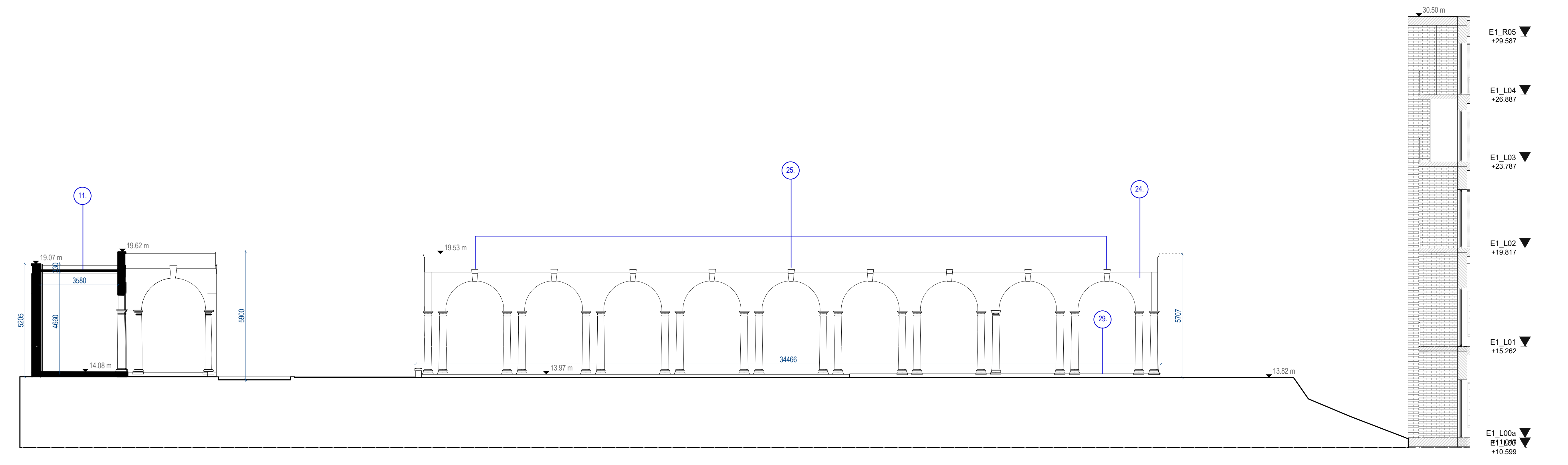
A0

N

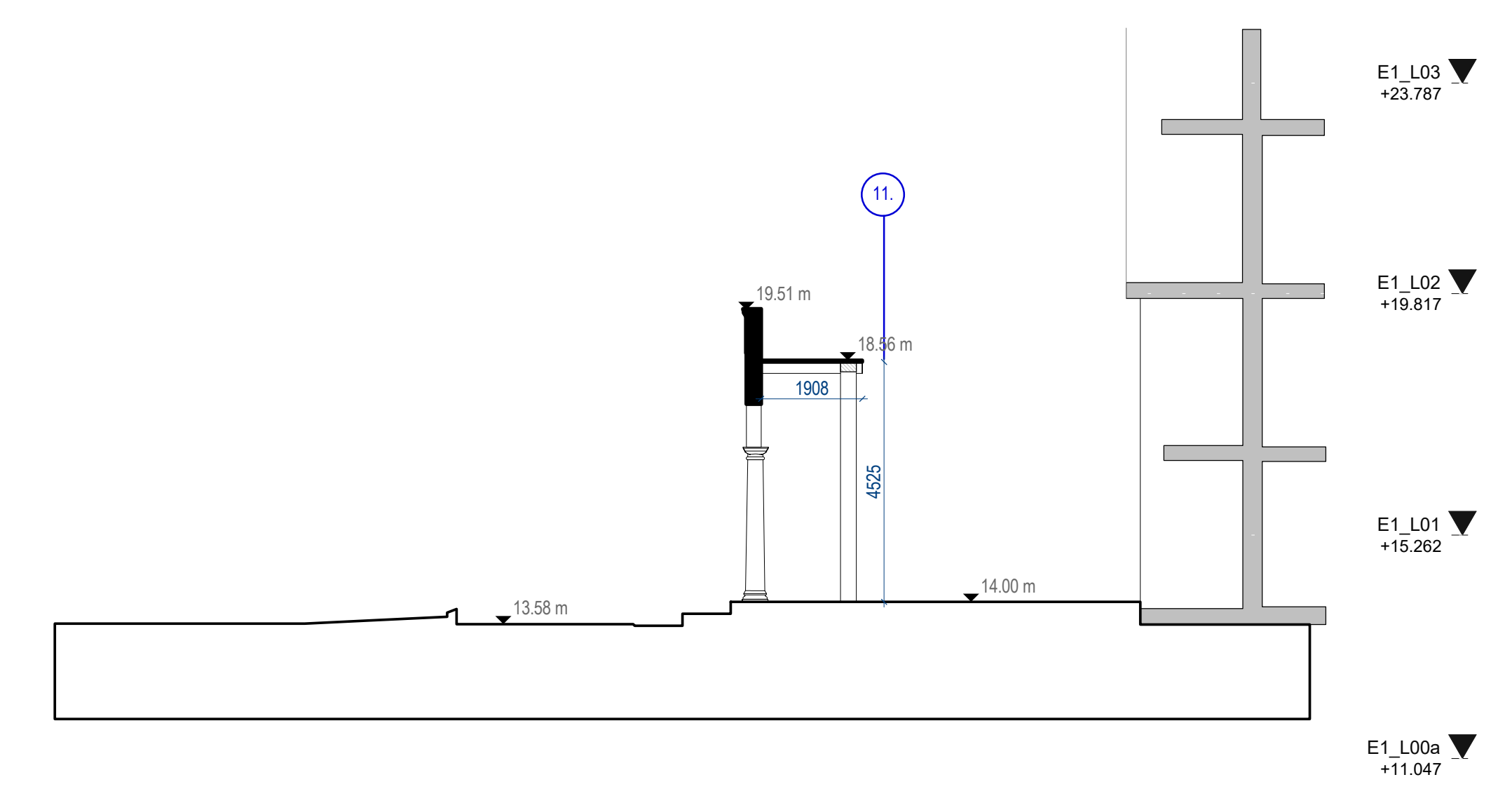
1



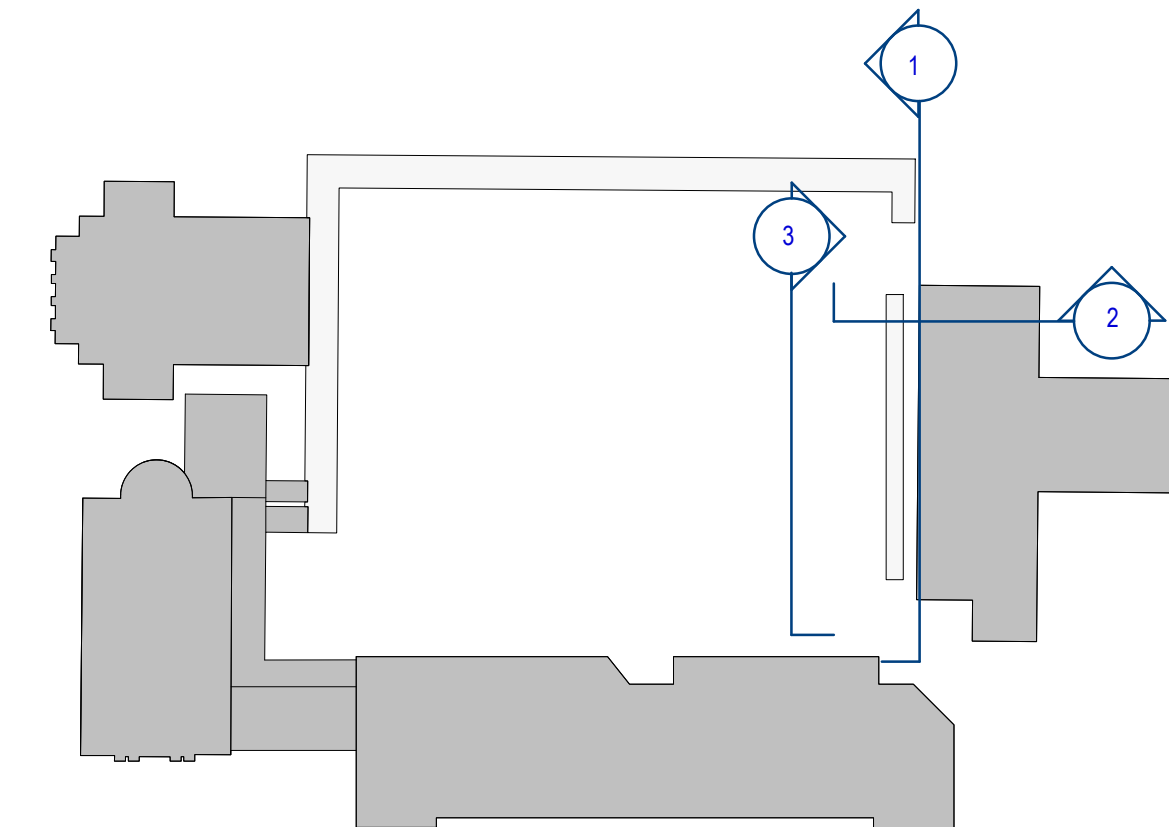
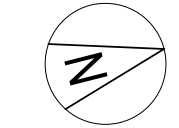
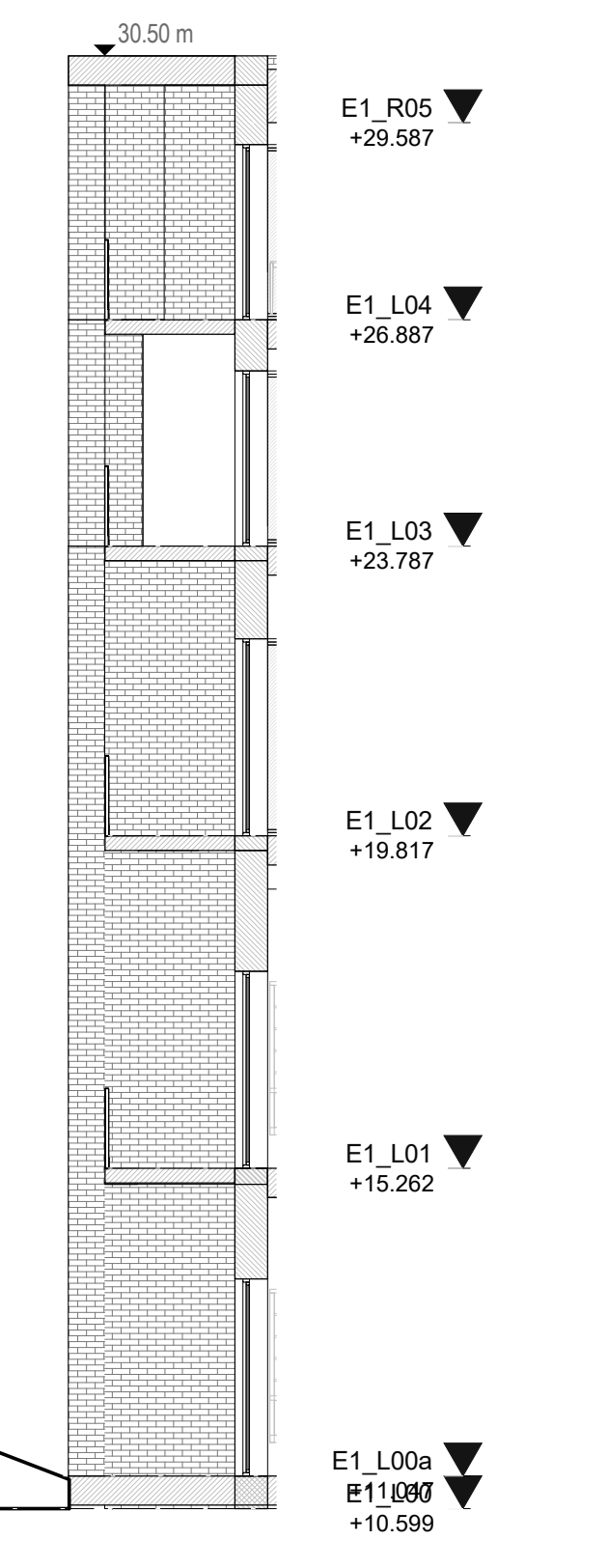
1 Sections Proposed H-H
Scale: 1:100



3 Proposed Section I-I
Scale: 1:100



2 Section Proposed G-G
Scale: 1:100



REV	DATE	DESCRIPTION	CHK	DRN
P2	APR/21	Issued for Planning		SP
P1	NOV/20	Issued for Pre-Application Consultation		SP
REV	DATE	DESCRIPTION	CHK	DRN

STATUS CODE DESCRIPTION

ISSUED FOR PLANNING APPROVAL

APPLICANT NAME

CWTC Multi Family ICAV acting on behalf of its sub-kind DBTR DR1 Fund

PROJECT NAME

100, Canal Quay, Dublin 3, D0

LOCATION

Holy Cross College, Cornhill Road, Dublin 3 and Drumcondra Road Lower, Drumcondra, Dublin 9

DRAWING

Cloister North Elevation

PROJECT NUMBER

CLN-MCM-00-ZZ-MS-A-0003

DATE

10/06/20

SCALE @ A0

As indicated

DRAWN/CHECKED

IB/ROC

STATUS CODE

A1

CLN-MCM-E1-ZZ-DR-A-P-123

REVISION

P2

Henry J Lyons

Architecture + Interiors

henryjlyons.com

+353 1 889 3333

51-54 Pearse Street

Dublin D02 X466



O'Donnell+Tuomey

mcculloughmulvinarchitects

NMP

Nivali Management + Planning

o mahony pike

BM

BARRETT MANDY

