

GENERAL NOTES

"All taking down and removals to be carefully undertaken in accordance with Conservation Specifications by David Slattery Conservation Architects."

"Surviving original multi-pane sash windows to link building to be carefully conserved, retaining single panes of glass in accordance with Conservation Specifications by David Slattery Conservation Architects."

"Non-original 20th Century sash windows to Seminary to be spliced where heads and half cills are decayed. New slingsize double glazed units to be fitted into existing sashes. All in accordance with detail drawings showing glazing bar profile impact and Conservation Specifications by David Slattery Conservation Architects."

"All services to Seminary to reuse existing routes where possible with any new routes and installations to be carried out in accordance with Conservation Specifications by David Slattery Conservation Architects."

"Minor repairs to leaded and stained glass in Assembly Hall are limited to repair of opening sections and glass replacement where panes are broken. No storm or secondary glazing proposed. All to be carried out in accordance with Conservation Specifications by David Slattery Conservation Architects."

"Stained glass over front entrance to chapel is set in a timber frame and is to be carefully removed to in accordance with Conservation Specifications by David Slattery Conservation Architects."

"Slate roofs to Seminary and Chapel to be restored using Blue Bangor slate and stepped lead valleys in accordance with Conservation Specifications by David Slattery Conservation Architects."

"All cast-iron rainwater goods to be retained and renewed with any replacements where goods are beyond repair to be in cast iron. All in accordance with Conservation Specifications by David Slattery Conservation Architects."

"Render to be lightly cleaned with dilute biocide in accordance with Conservation Specifications by David Slattery Conservation Architects."

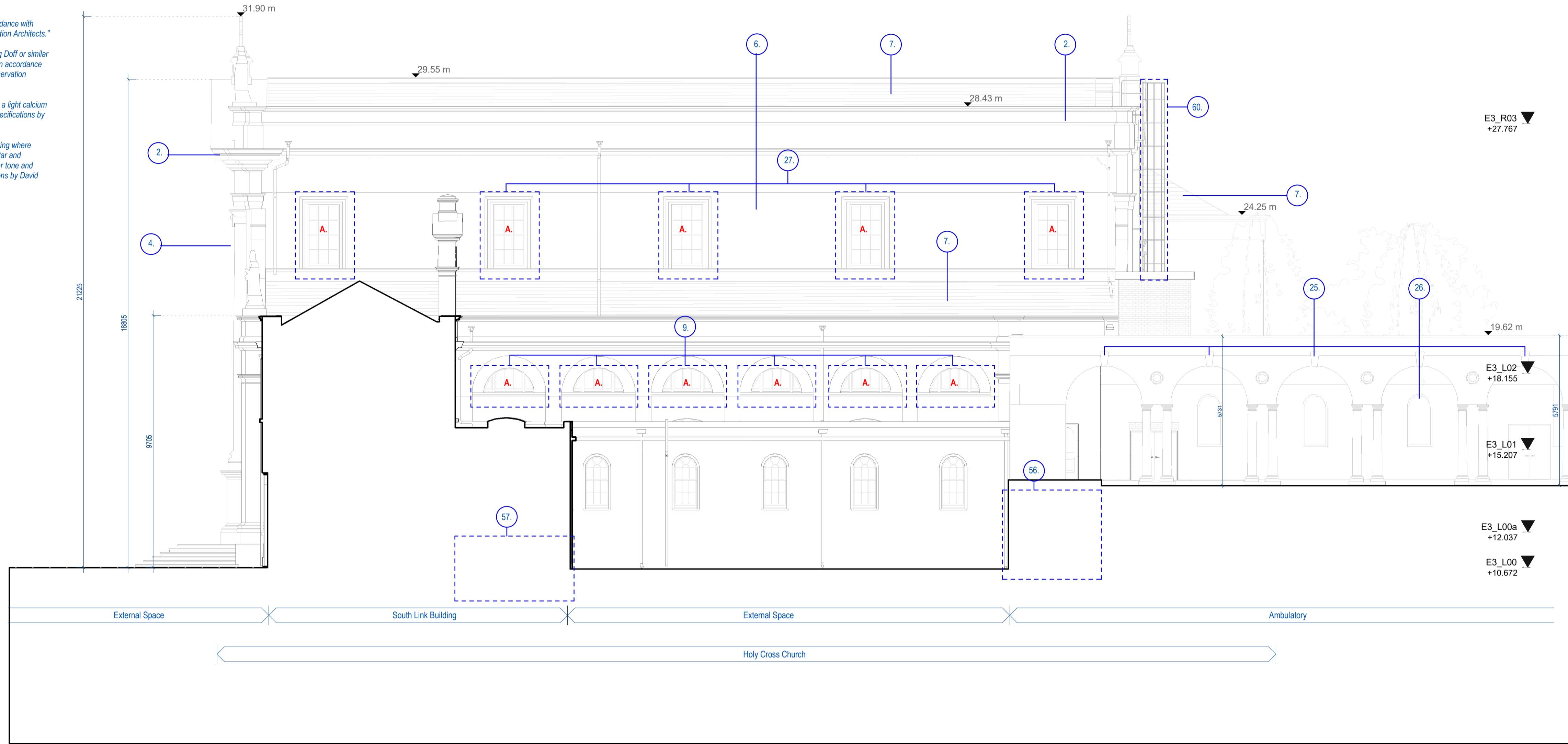
"Limestone strings and cills to be carefully cleaned using Doff or similar steam cleaning - no abrasive or chemical cleaning. All in accordance with Conservation Specifications by David Slattery Conservation Architects."

"Granite cills, cappings etc to be carefully cleaned using a light calcium carbonate abrasive in accordance with Conservation Specifications by David Slattery Conservation Architects."

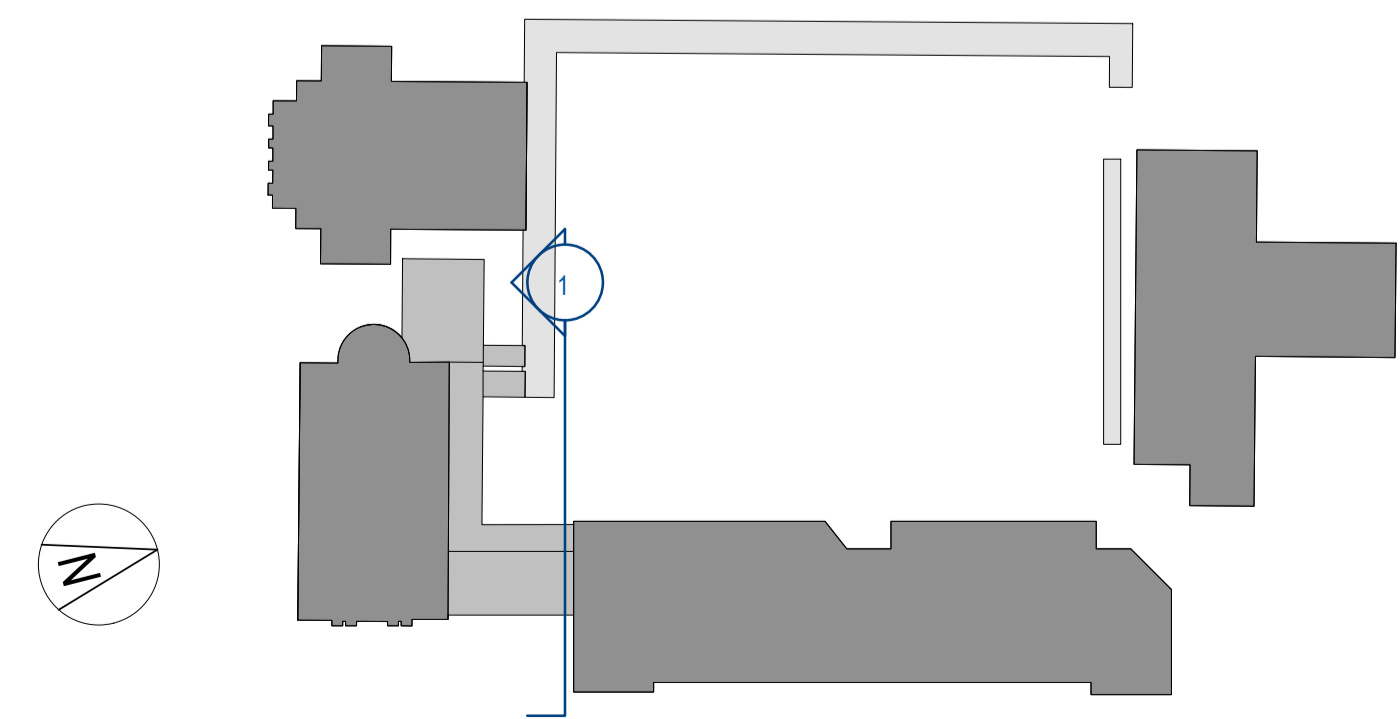
"Wholesale repointing is not required and localised pointing where necessary will be carried out using a lime (NHL3.5) mortar and aggregate and lime mix to match existing bedding mortar tone and texture. All in accordance with Conservation Specifications by David Slattery Conservation Architects."

KEY - WINDOWS

- A. EXISTING WINDOW RETAINED
- B. EXISTING WINDOW REMOVED
- C. EXISTING WINDOW REPLACED
- D. NEW WINDOW

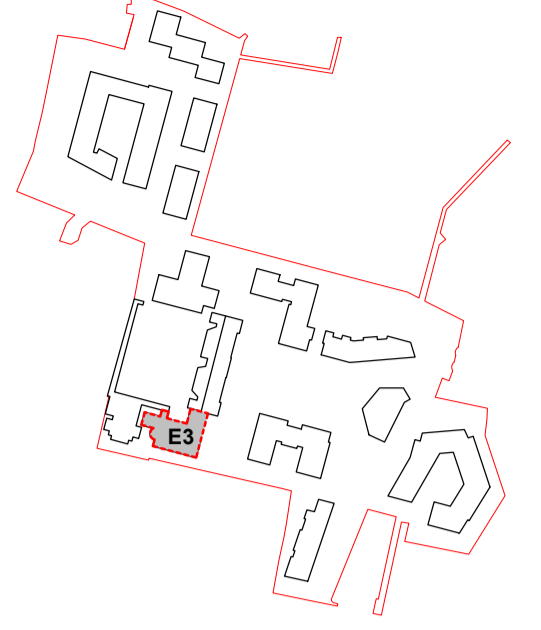
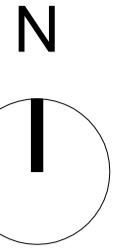


1 North Elevation-Planning
Scale - 1 : 100



ALL DIMENSIONS TO BE CHECKED ON SITE
NO DIMENSIONS TO BE SCALED FROM THIS DRAWING
DRAWING IS TO BE READ IN CONJUNCTION WITH RELEVANT
CONSULTANTS DRAWINGS

A1



REV	DATE	DESCRIPTION	CHK	DRN
P2	APR 21	Issued for Planning	DT	SP
P1	NOV 20	Issued for Pre Application consultation	DT	IB

STATUS CODE DESCRIPTION
ISSUED FOR PLANNING APPROVAL

APPLICANT NAME
CWTC Multi Family ICAV acting on behalf of its sub-fund DBTR DR1 Fund

PROJECT NAME
Holy Cross College SHD

LOCATION
Holy Cross College, Clonliffe Road, Dublin 3 and Drumcondra Road Lower, Drumcondra, Dublin 9

DRAWING
Church - Proposed North Elevation

PROJECT NUMBER
CLN-MCM-00-ZZ-M3-A-C0003

SCALE@A1:
As indicated

STATUS CODE: DRAWING NUMBER REVISION
A1 CLN-MCM-E3-ZZ-DR-A-P-133 P2

Henry J Lyons
Architecture + Interiors
henrylyons.com



O'Donnell+Tuomey

mcculloughmulvinarchitects

NMP
Niall Montgomery + Partners

o'mahony pike

BM
BARRETT MAHONY

