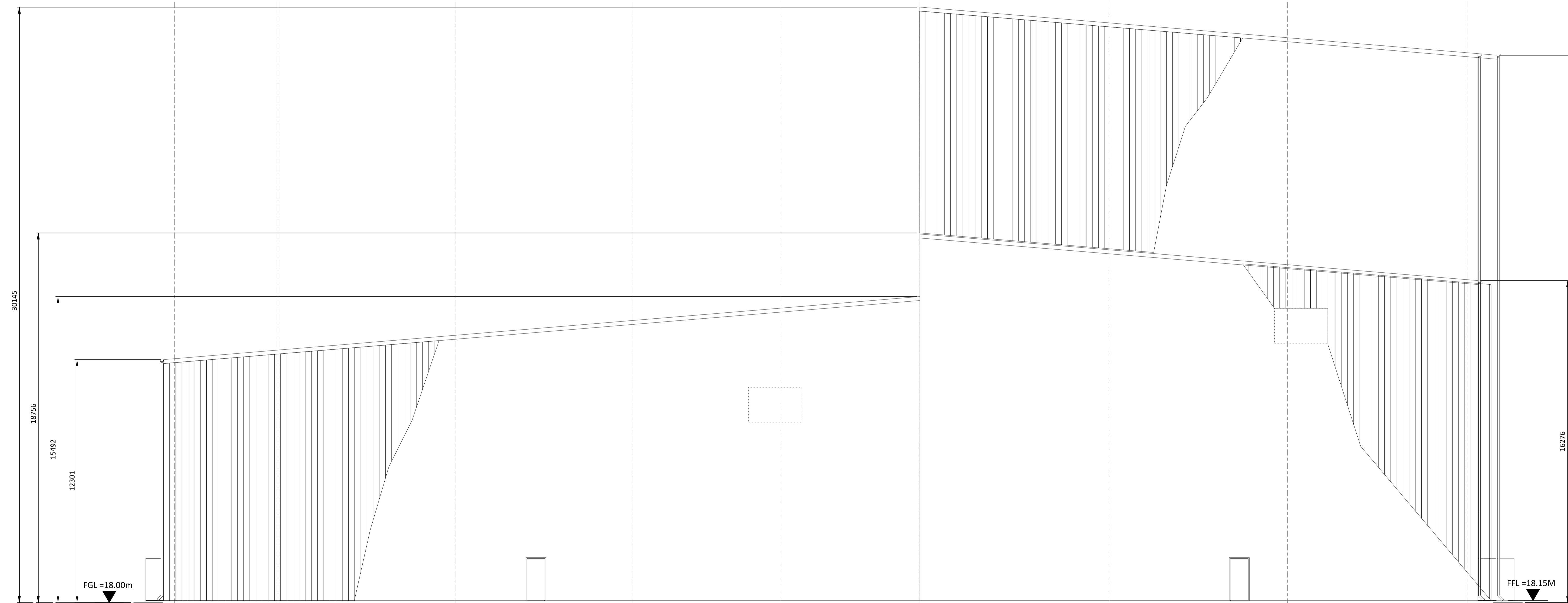


NOTES:

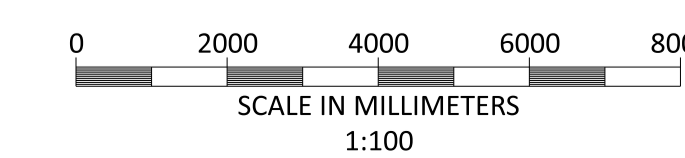
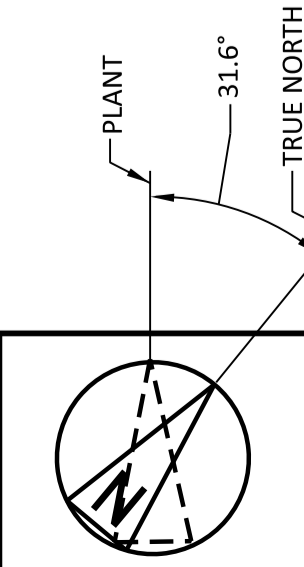
1. ROOF - COMPOSITE PVC/PLASTISOL LAMINATED INSULATED MEMBRANE WITH INTEGRAL STEEL SUPPORT DECKING, COLOUR CHROME GREEN, RAL 6020.
2. WALLS - COMPOSITE PVC/PLASTISOL LAMINATED INSULATED VERTICAL PROFILED MODULAR STEEL CLADDING, COLOUR RESEDA GREEN, RAL 6011 (LOWER TURBINE HALL) & OLIVE GREEN, RAL 6003 (UPPER HRSG AND TURBINE HALL)
3. FASCIAS & TRIMS INCLUDING DOORS, WINDOWS, VENTILATION OPENINGS & SERVICES PENETRATION FRAMES TO BE COLOUR TRAFFIC GREY B, RAL 7045.
4. THE ENCLOSED DESIGN IS FOR PLANNING PURPOSES ONLY AND NOT FOR CONSTRUCTION. EQUIPMENT LOCATIONS ARE INDICATIVE ONLY AND ARE SUBJECT TO CHANGE WITHIN BUILDING.



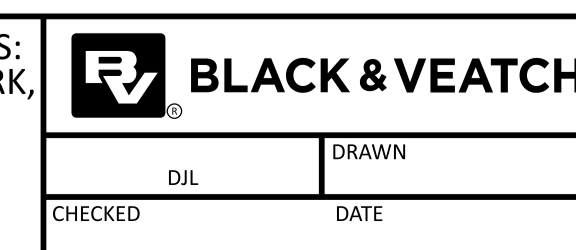
EAST ELEVATION  
SEE DRAWING 198291-SS-A4031A

198291-SS-A4031A.dwg  
 2021/06/02 08:53 AM  
 PLOT SCALE 1:1

NO	DATE	REVISIONS AND RECORD OF ISSUE	DRN	DES	CHK	PDE	APP
1	18/JUN/2021	ISSUED FOR PLANNING	TMC	DIL		DAC	
0	30/APR/2021	ISSUED FOR PLANNING	TMC	DIL		DAC	



BLACK & VEATCH CORP HEADQUARTERS:  
11401 LAMAR AVENUE, OVERLAND PARK,  
KANSAS, USA



SHANNON LNG LIMITED  
SHANNON TECHNOLOGY AND ENERGY PARK (STEP)  
TURBINE HALL  
EAST ELEVATION

PROJECT	DRAWING NUMBER	REV
198291-SS-A4031F		1

**NOT TO BE USED  
FOR CONSTRUCTION**

THE DISTRIBUTION AND USE OF THE NATIVE  
FORMAT CAD FILE OF THIS DRAWING IS  
UNCONTROLLED. THE USER SHALL VERIFY  
TRACEABILITY OF THIS DRAWING TO THE LATEST  
CONTROLLED VERSION.