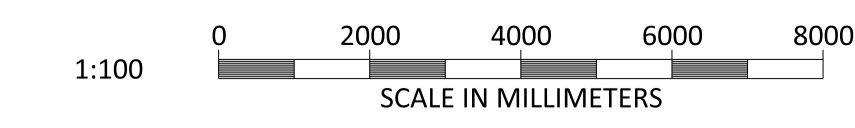
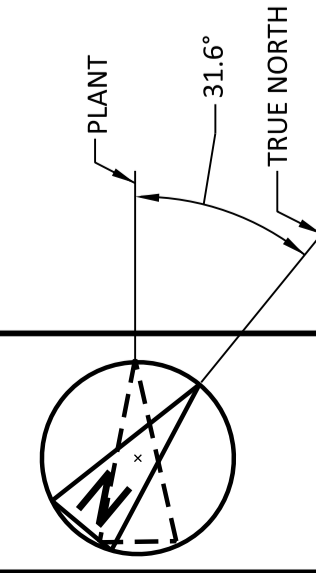
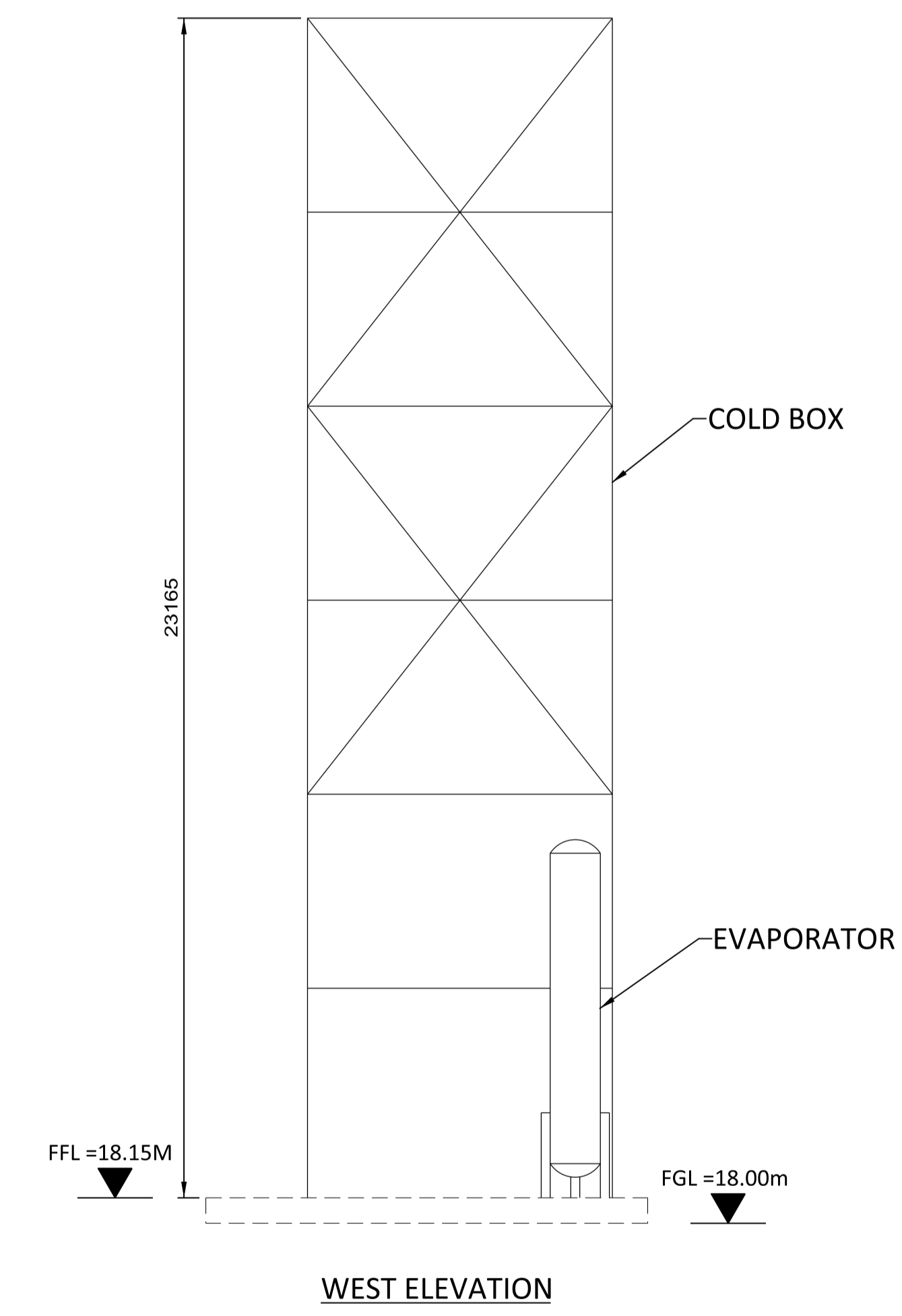
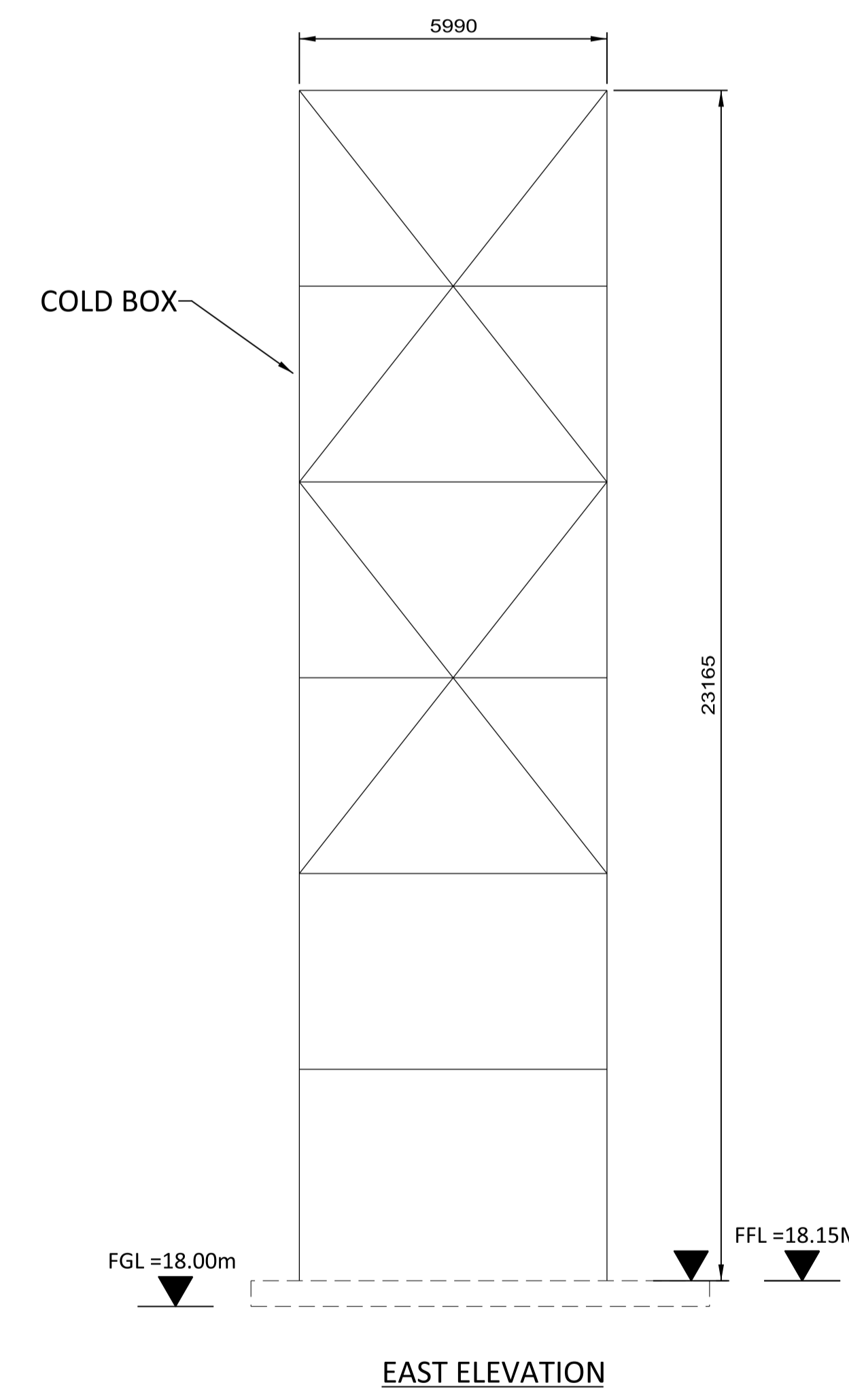
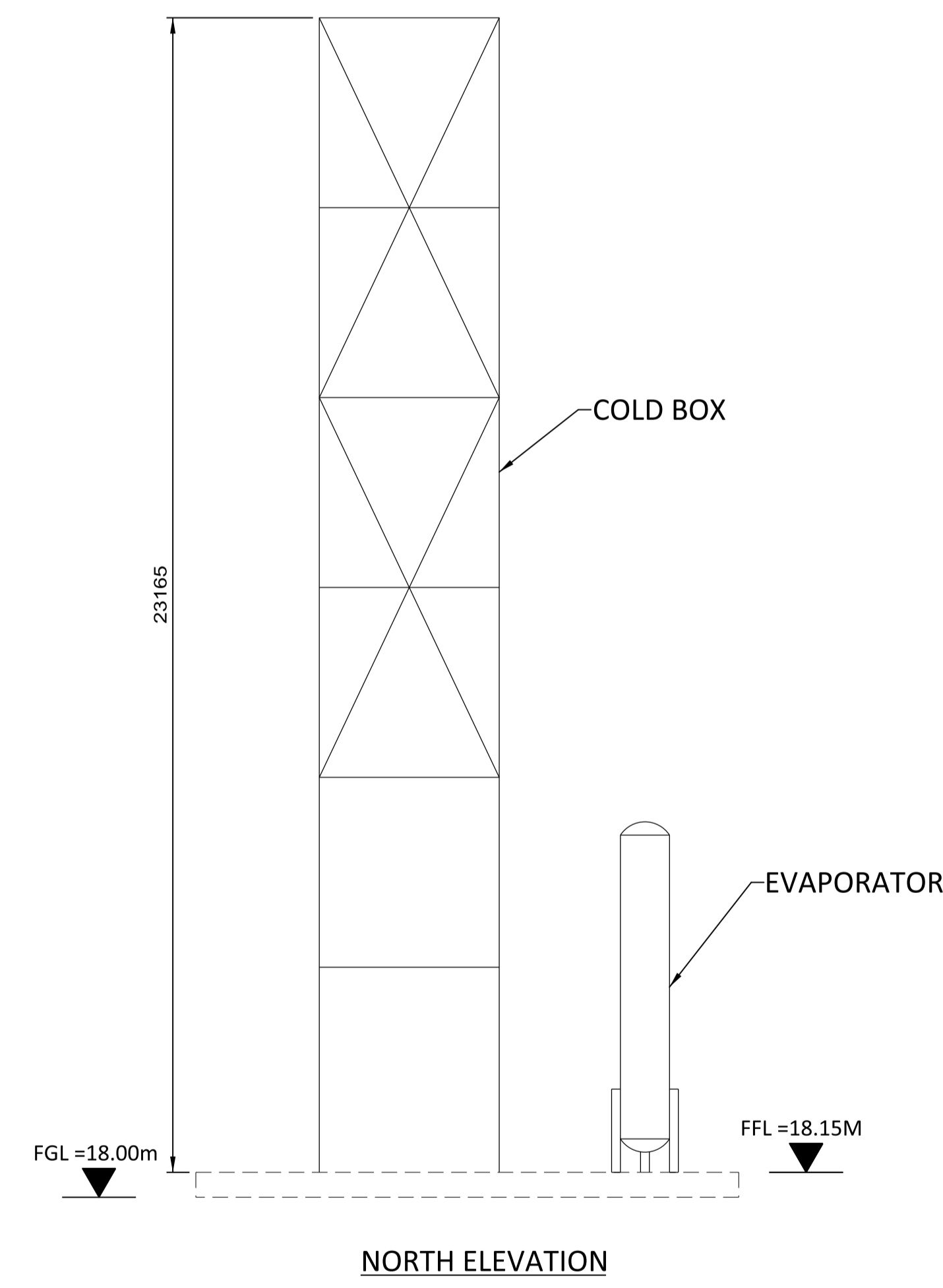
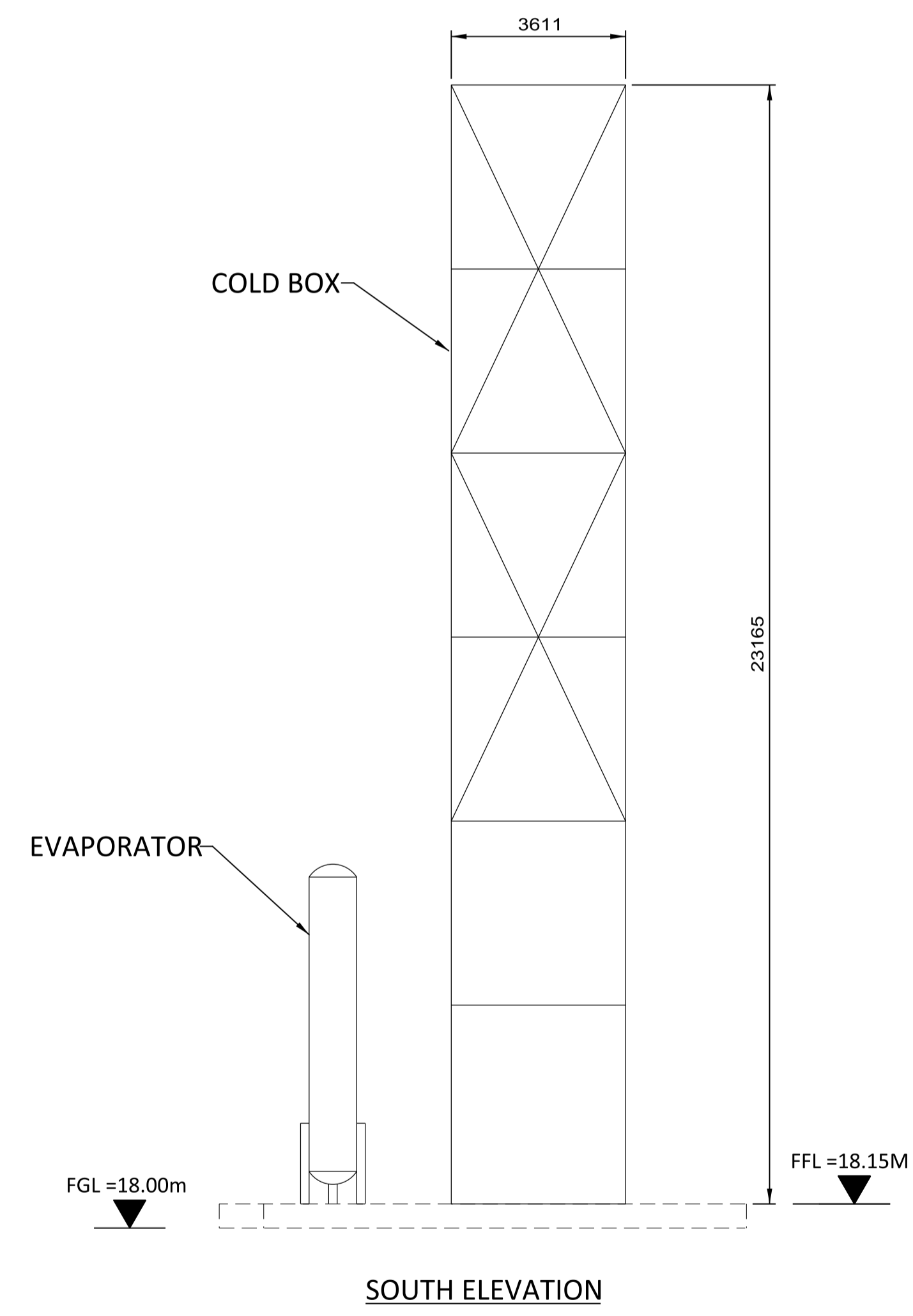
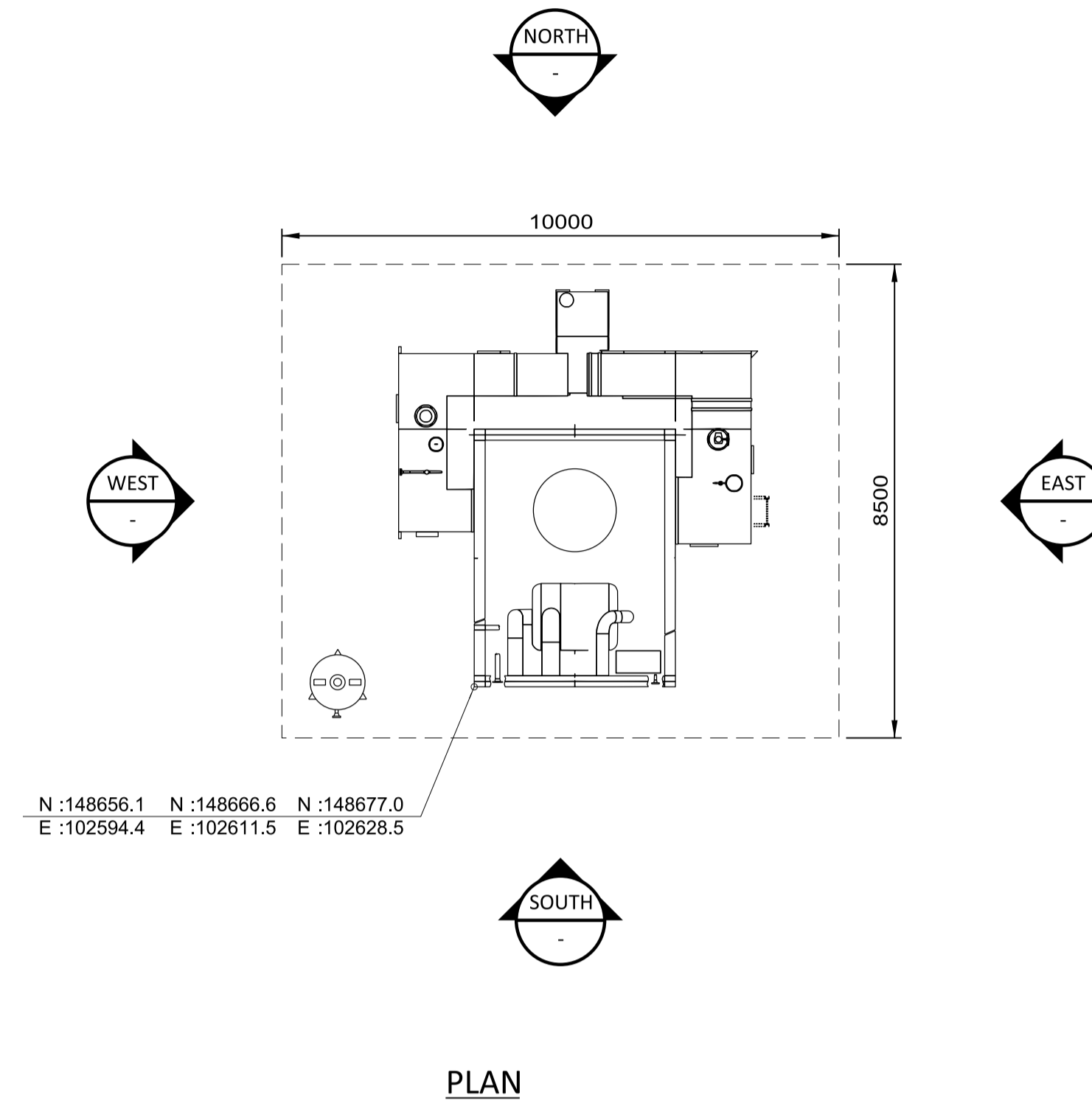
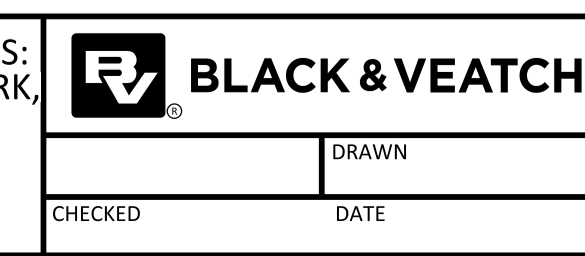


- NOTES:
1. THE ENCLOSED DESIGN IS FOR PLANNING PURPOSES ONLY AND NOT FOR CONSTRUCTION. EQUIPMENT LOCATIONS ARE INDICATIVE ONLY AND ARE SUBJECT TO CHANGE WITHIN BUILDING.
 2. EQUIPMENT AND SOUND WALLS TO BE COLOUR OLIVE-GRAY, RAL 6006.



BLACK & VEATCH CORP HEADQUARTERS:
11401 LAMAR AVENUE, OVERLAND PARK,
KANSAS, USA



SHANNON LNG LIMITED
SHANNON TECHNOLOGY AND ENERGY PARK (STEP)
NITROGEN GENERATION EQUIPMENT COLD BOX
PLAN AND ELEVATIONS
(TYP OF 3)

PROJECT	DRAWING NUMBER	REV
198291-SS-A4051		0
CODE	AREA	

07/27/2021 01:28 PM
 15:21:11
 1

NO	DATE	ISSUED FOR PLANNING	REVISIONS AND RECORD OF ISSUE	DRN	DES	CHK	PDE	APP
0	18/JUN/2021	ISSUED FOR PLANNING						

NOT TO BE USED FOR CONSTRUCTION
 THE DISTRIBUTION AND USE OF THE NATIVE
 FORMAT CAD FILE OF THIS DRAWING IS
 UNCONTROLLED. THE USER SHALL VERIFY
 TRACEABILITY OF THIS DRAWING TO THE LATEST
 CONTROLLED VERSION.