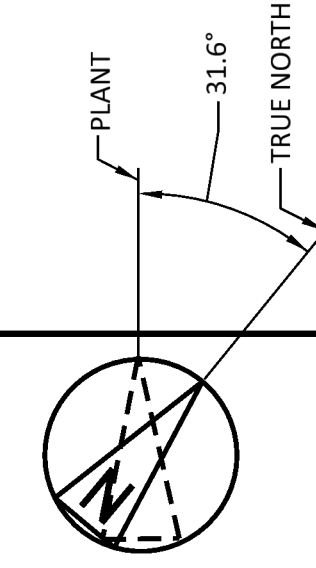
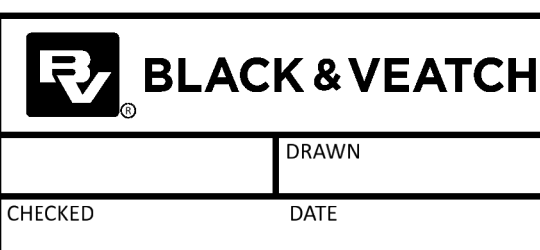


18/07/2021 12:44 PM
 198291-SS-A4100
 18/07/2021 12:44 PM

NO	DATE	ISSUED FOR PLANNING	REVISIONS AND RECORD OF ISSUE	TMC	DIL	DAC	DRN	DES	CHK	PDE	APP
0	18/JUN/2021	ISSUED FOR PLANNING									



BLACK & VEATCH CORP HEADQUARTERS:
 11401 LAMAR AVENUE, OVERLAND PARK,
 KANSAS, USA



SHANNON LNG LIMITED
 SHANNON TECHNOLOGY AND ENERGY PARK (STEP)
 PLANT ARRANGEMENT SECTIONS KEY PLAN

PROJECT	DRAWING NUMBER	REV
SHANNON LNG LIMITED	198291-SS-A4100	0
CODE	AREA	

NOT TO BE USED FOR CONSTRUCTION
 THE DISTRIBUTION AND USE OF THE NATIVE
 FORMAT CAD FILE OF THIS DRAWING IS
 UNCONTROLLED. THE USER SHALL VERIFY
 TRACEABILITY OF THIS DRAWING TO THE LATEST
 CONTROLLED VERSION.