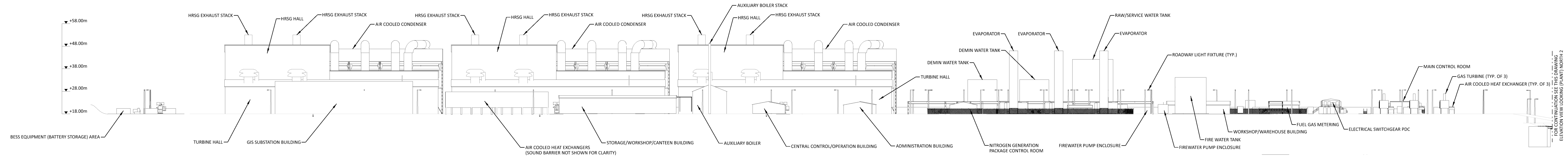
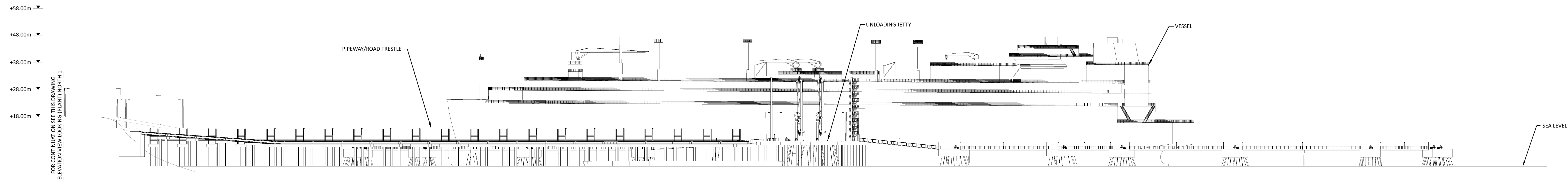


ELEVATION VIEW LOOKING (PLANT) WEST



ELEVATION VIEW LOOKING (PLANT) NORTH 1

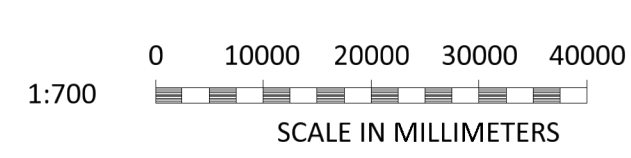


ELEVATION VIEW LOOKING (PLANT) NORTH 2

**NOT TO BE USED FOR CONSTRUCTION**  
 THE DISTRIBUTION AND USE OF THE NATIVE FORMAT CAD FILE OF THIS DRAWING IS UNCONTROLLED. THE USER SHALL VERIFY TRACEABILITY OF THIS DRAWING TO THE LATEST CONTROLLED VERSION.

16/07/2021 11:00 AM  
 08/23/2021 11:00 AM

NO	DATE	REVISIONS AND RECORD OF ISSUE	TMC	DIL	DAC	APP
0	18/JUN/2021	ISSUED FOR PLANNING				



BLACK & VEATCH CORP HEADQUARTERS:  
 11401 LAMAR AVENUE, OVERLAND PARK,  
 KANSAS, USA

**BLACK & VEATCH**  
 DRAWN: \_\_\_\_\_  
 CHECKED: \_\_\_\_\_  
 DATE: \_\_\_\_\_

SHANNON LNG LIMITED  
 SHANNON TECHNOLOGY AND ENERGY PARK (STEP)  
 SITE BUILDINGS CONTIGOUS - ELEVATION

PROJECT	DRAWING NUMBER	REV
198291-SS-A4102		0
CODE	AREA	