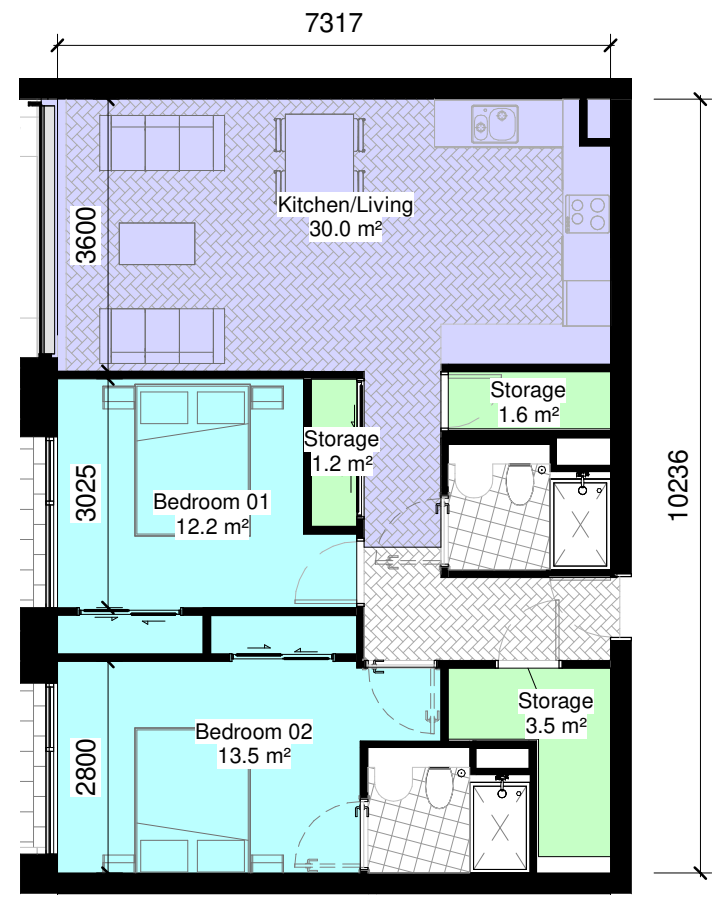
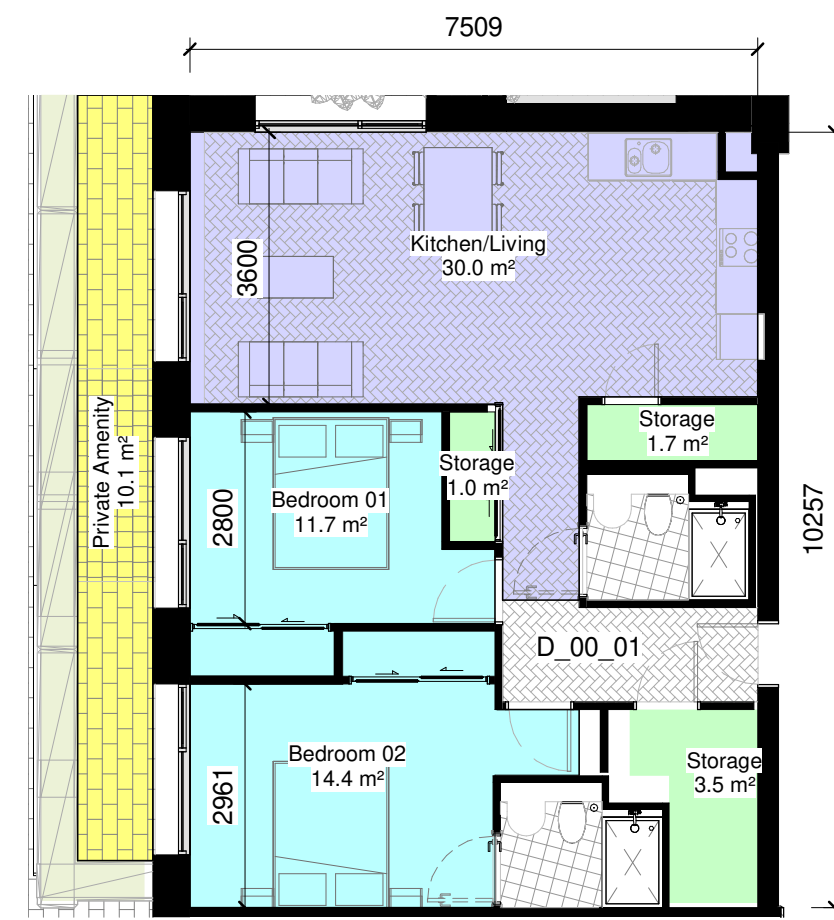


2 BED TYPES



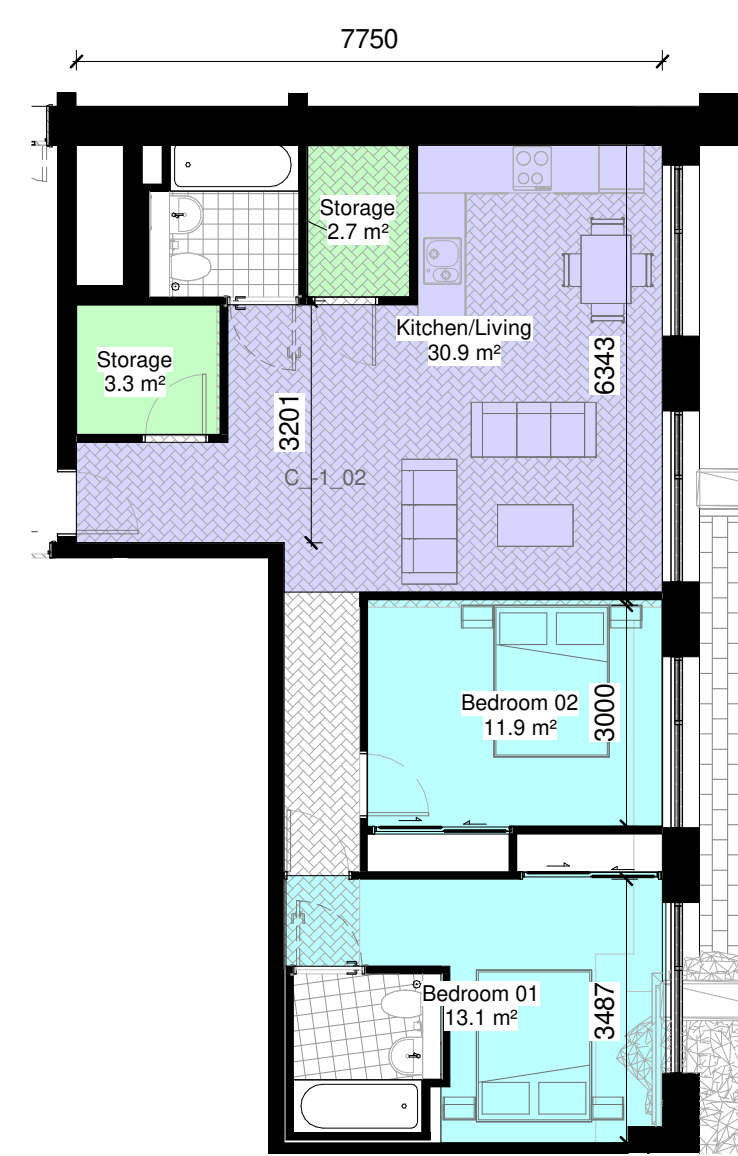
TYPE: 2.1
1:100



TYPE: 2.1D
1:100



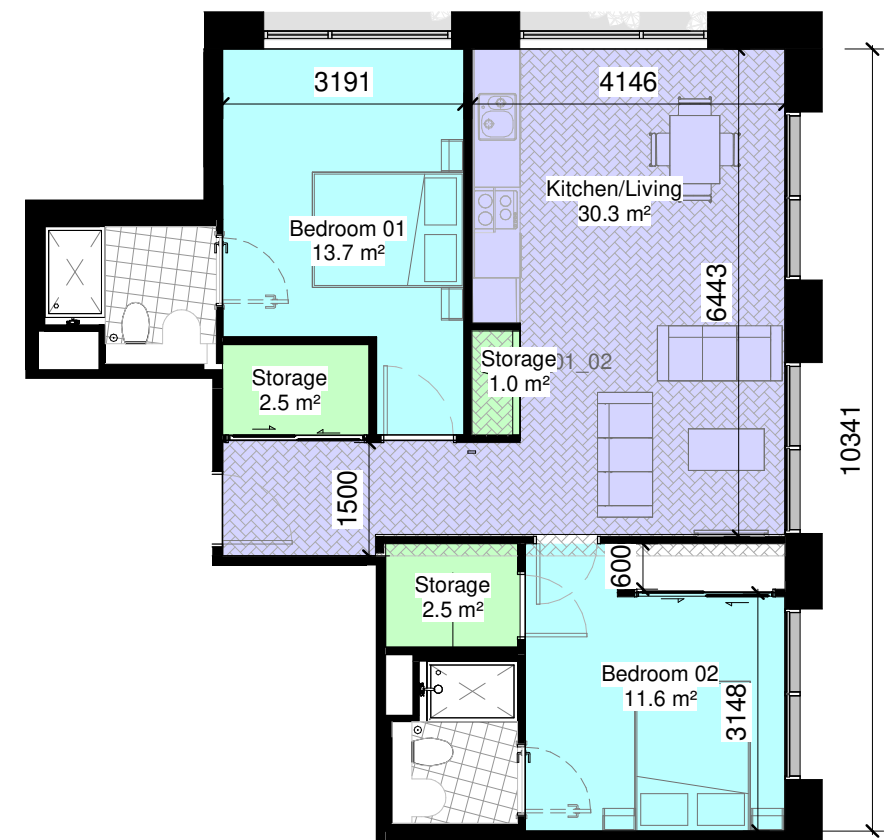
TYPE: 2.2
1:100



TYPE: 2.3
1:100



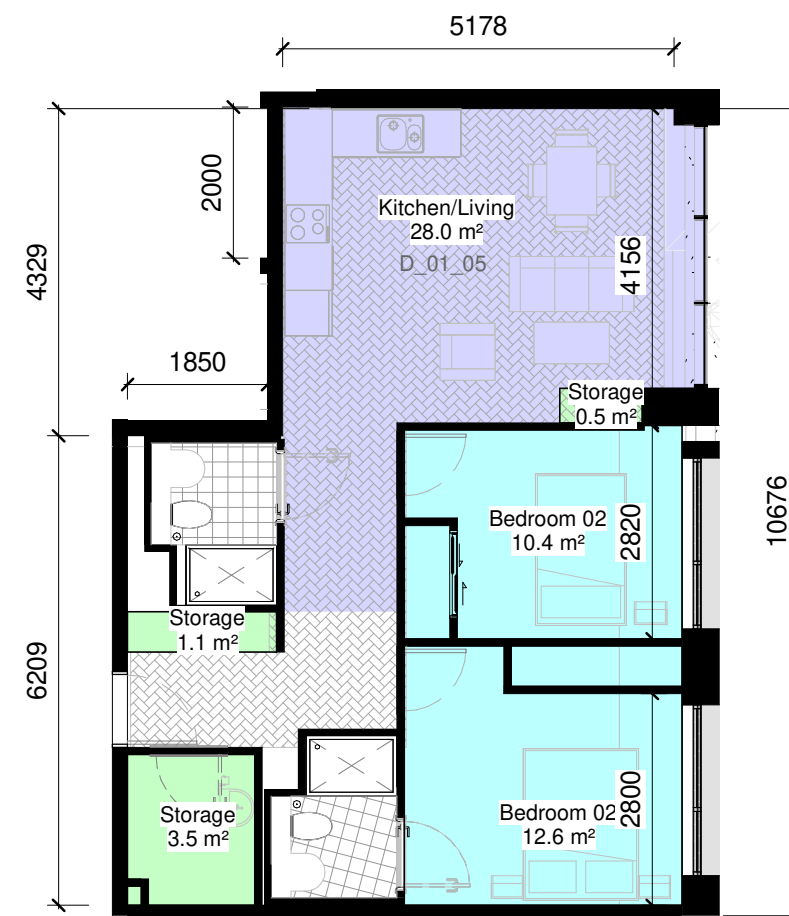
TYPE: 2.3D
1:100



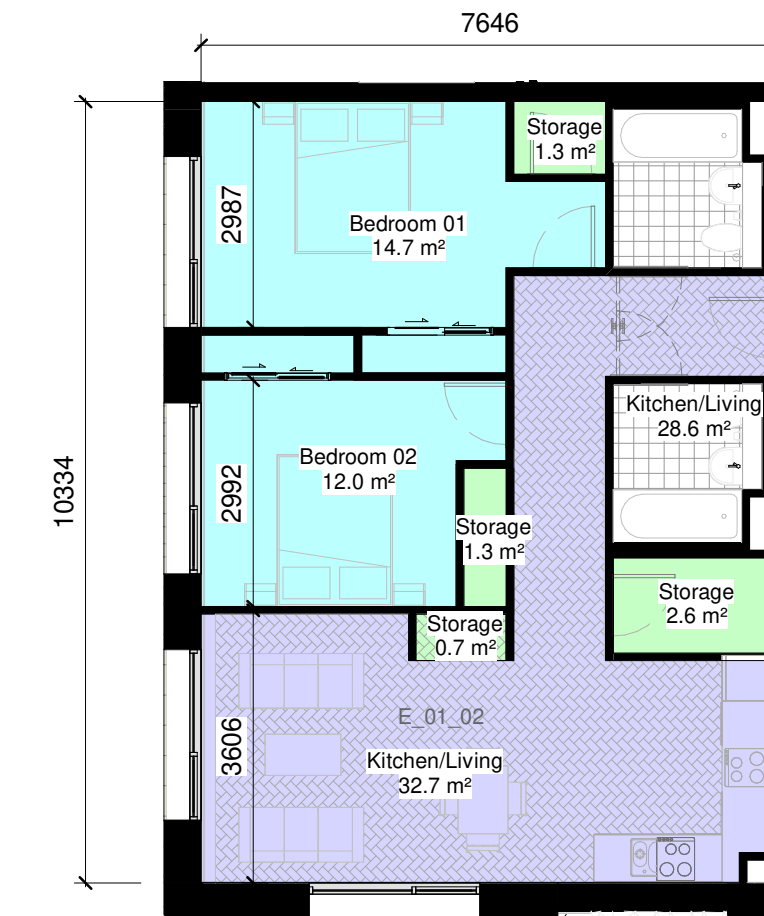
TYPE: 2.4
1:100



TYPE: 2.5
1:100



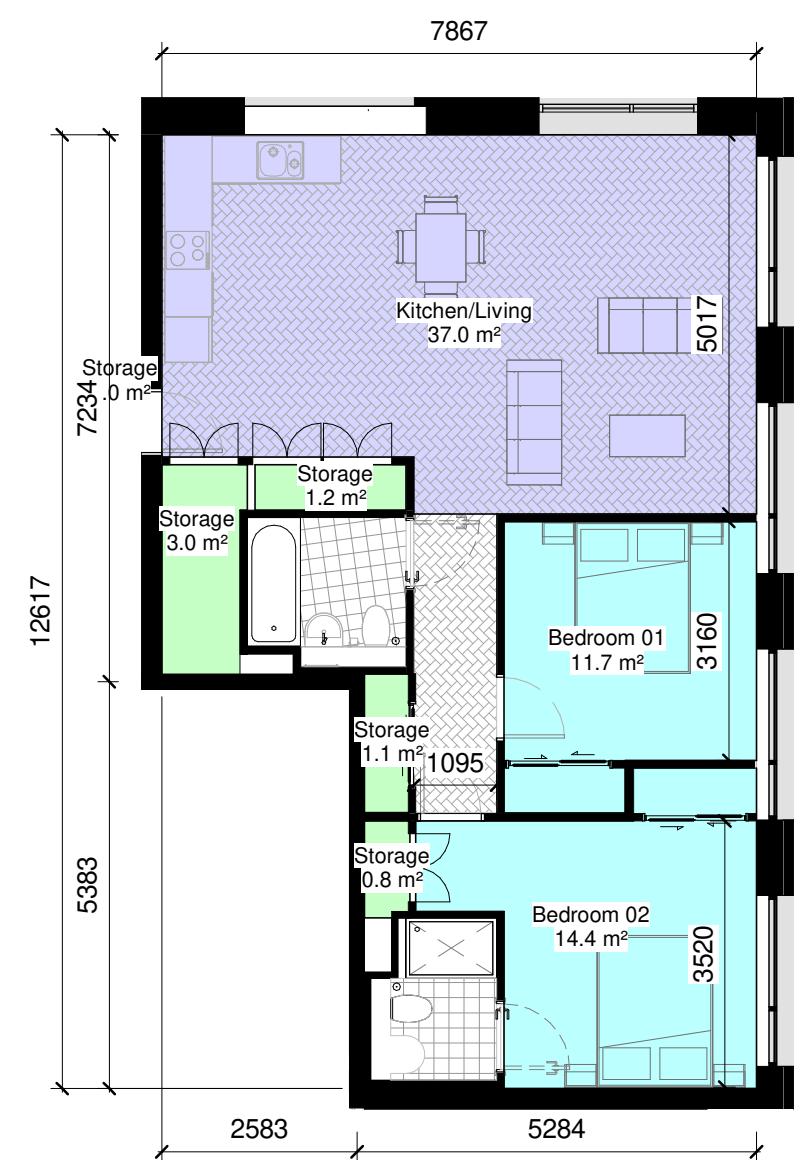
TYPE: 2.6
1:100
2 BED (3 person)



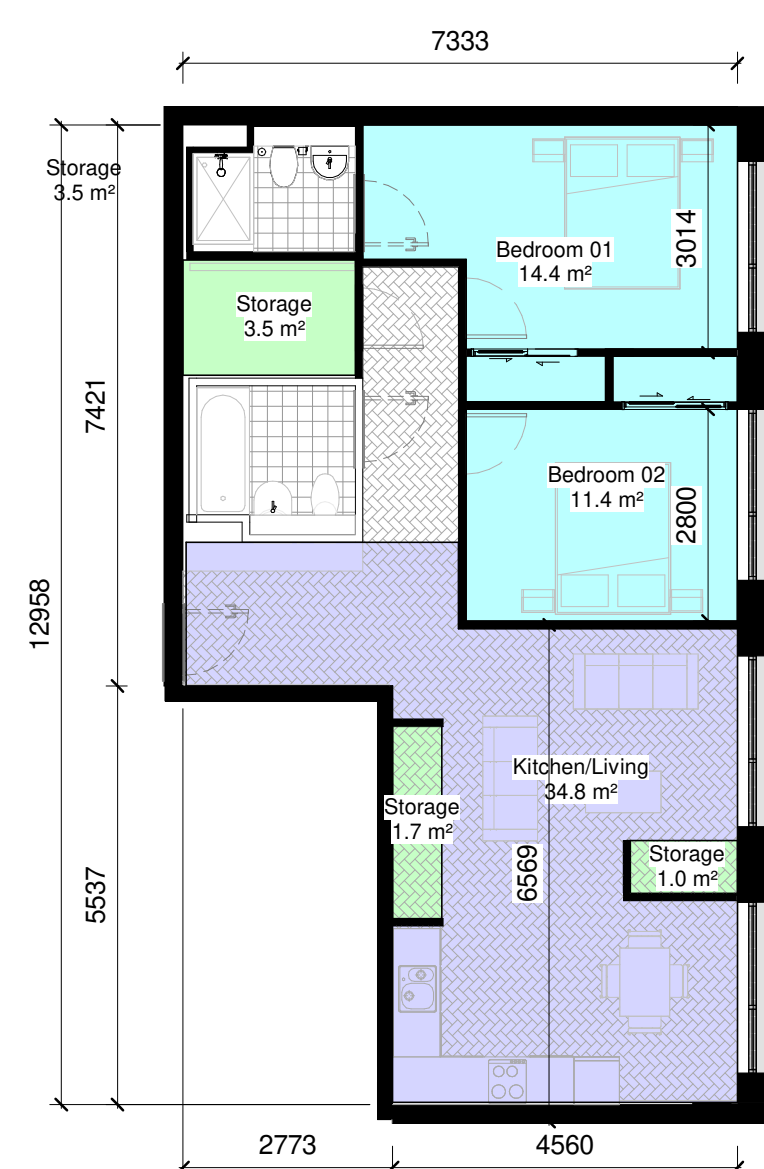
TYPE: 2.7
1:100



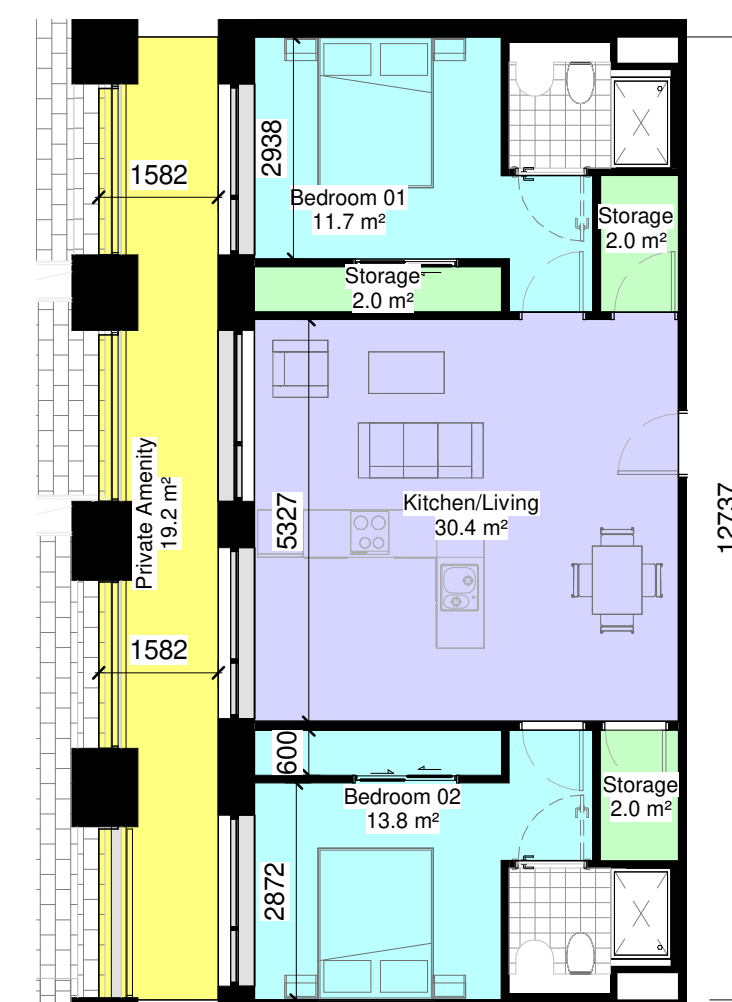
TYPE: 2.8
1:100



TYPE 2.8D
1:100



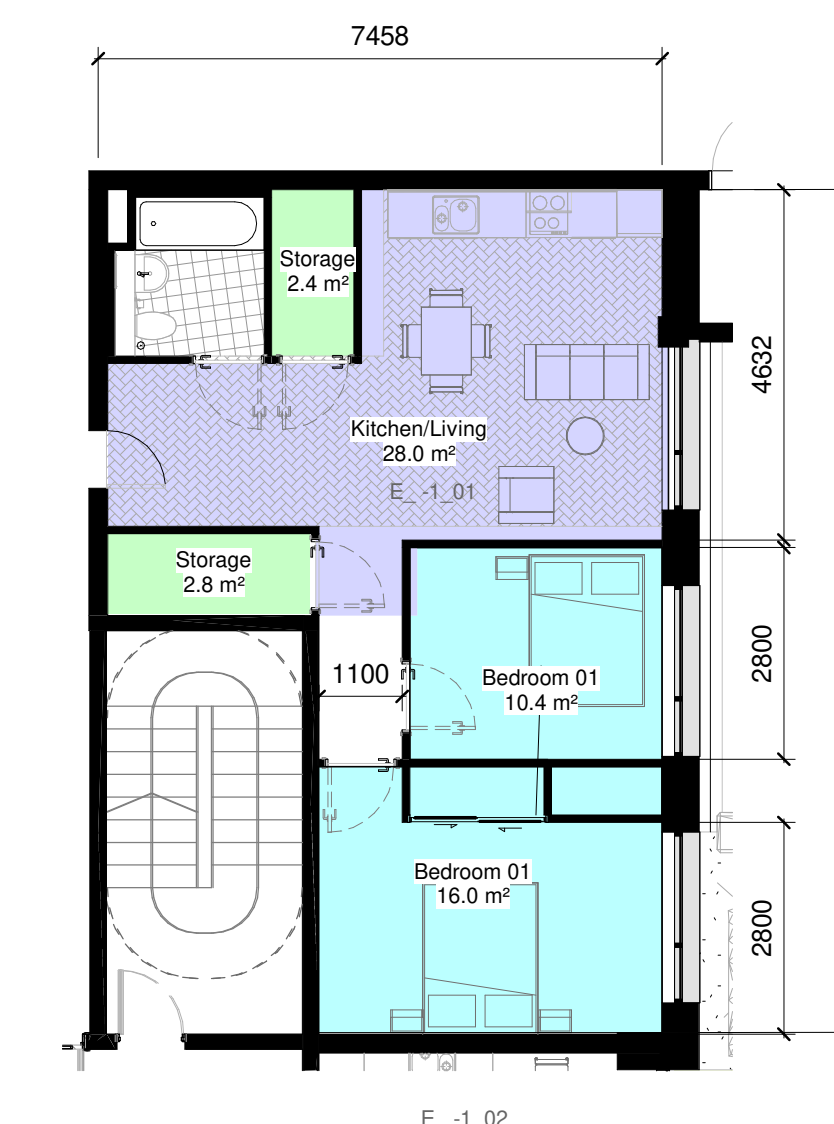
TYPE: 2.9
1:100



TYPE: 2.10
1:100



TYPE 2.11
1:100



TYPE 2.12
1:100
2 BED (3 person)

Notes:
- Do not scale from this drawing. Use figured dimensions in all cases.
- Verify dimensions on site and report any discrepancies to the Architect immediately.
- This drawing is to be read in conjunction with the Architect's Specification.
- © This drawing is copyright and may only be reproduced with the Architect's permission.

Drawing Notes:

P01	02/07/21	EOB	Issued for Planning
Rev.	Date	Drawn	Details of Issue / Revision
Issues & Revisions			
W: www.reddyarchitecture.com E: info@reddyarchitecture.com			
Client Details:			
HPREF HSQ Investments Limited			
Project Details:			
HSQ Feasibility			
Heuston South Quarter, St John's Rd W, Kilmainham, Dublin 8			
Drawing Title:			
Apartment Types Sheet 2			
Job No.	Sheet Size:	Scale @A1:	
P19-213D	A3	1:100	
Issue Date:	Drawn By:	Reviewed By:	
07/01/21	Author	Approver	
Status:	Purpose of Issue		
Project-Originator-Zone-Level-Type-Role-Classification-Number			Revision
P19-213D-RAU-ZZ-ZZ-DR-A-APT-002			P 01