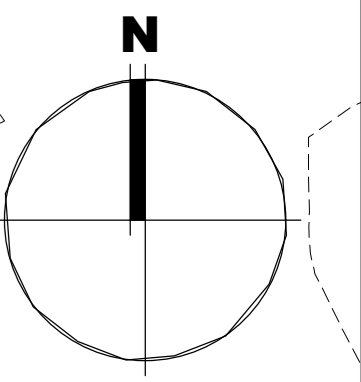


13.5 See drawing 6158B-P-006 for remaining site area

THIS DRAWING RELATES TO ORDNANCE SURVEY  
MAPS O.S. MAP REF. 3065-B, 3065-D, 3066-C,  
3065-15 & 3066-11  
OS DATUM TO MAIN HEAD

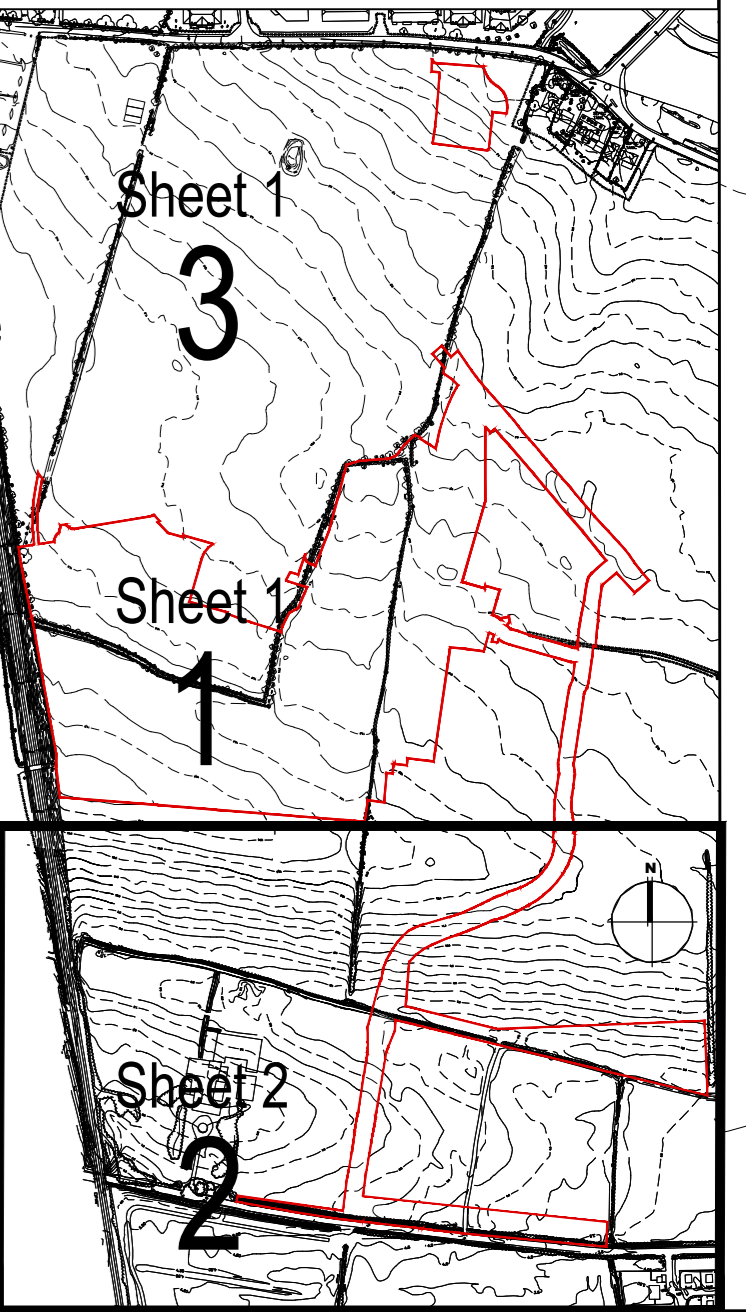


PROPOSED HAUL ROAD  
(PERMITTED UNDER REG. REF. F20A/0700)

SUDS  
(REFER TO ENGINEERS  
DRAWINGS FOR DETAIL)

SUDS  
(REFER TO ENGINEERS  
DRAWINGS FOR DETAIL)

Subject Site Keyplan (NTS)



REFER TO ENGINEERS DRAWINGS  
'21205-JBB-00-XX-DR-C-02001/2002/2003'  
FOR DETAILS  
ON ALL ROADS

REFER TO LANDSCAPE  
ARCHITECT'S DRAWINGS  
FOR ALL LANDSCAPING  
DETAILS

SITE LAYOUT PLAN

Notes

1. Copyright Reserved
2. Work to agreed dimensions only. Do not scale drawing
3. The contractor is responsible for checking all levels and dimensions on site and shall refer all discrepancies to the Architect
4. Fire Cert
5. Disability Cert
6. Where appropriate, for details of: a. structure, or mechanical and electrical details, see Engineers drawing
7. Proprietary items shall be checked in accordance with manufacturer's instructions
8. Sizes of proprietary items shall be checked with manufacturer
9. All work shall be in accordance with the specification, standards and services
10. The contractor shall be responsible for the coordination of structures, finishes and services

Issue Status	Progress
Planning Application	AS
Fire Cert	AS
Disability Cert	AS
Tender	AS
Construction	AS
As Built	AS
Information Only	AS

Rev	Date	Revision	Initials
01	18.02.21	SMA SUBMISSION	AS
02	07/09/21	ABP Pre-Planning Submission	JN
03	26.11.21	SMA PLANNING APPLICATION TO ABP	JN

Project	Portmarnock South Phase 1D Quintain Developments Ireland Limited
Drawing Title	SITE LAYOUT PLAN SHEET 2 OF 3
Drawing No.	6158B-P-007
Scale	1:500@A0
Rev	03
Drawn	AS
Date	09.02.2021

