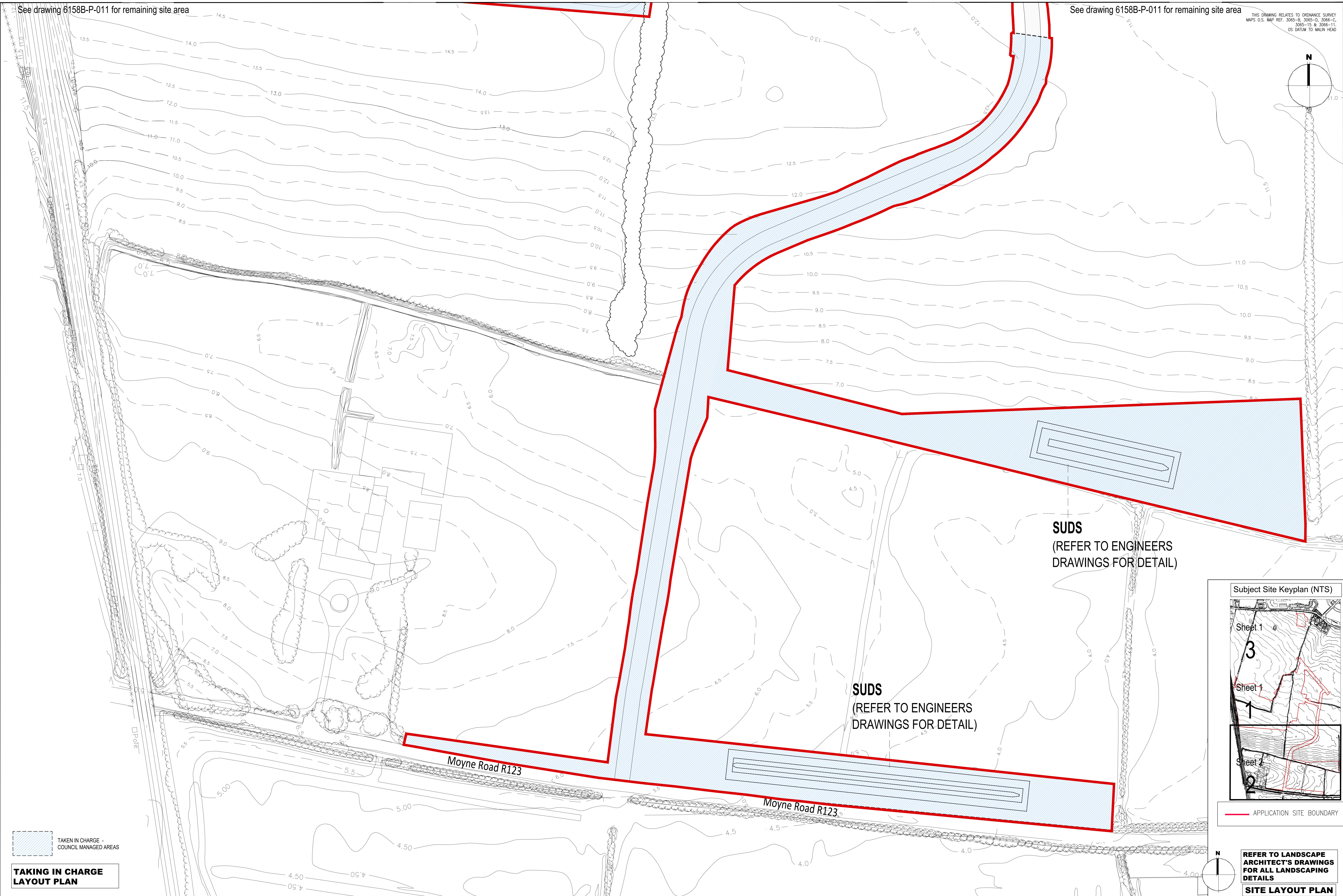
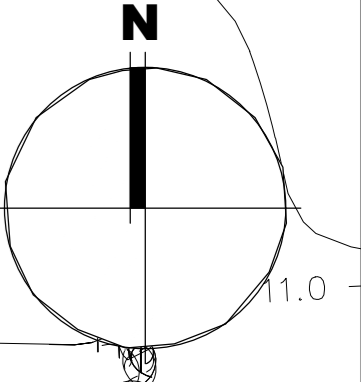


See drawing 6158B-P-011 for remaining site area

See drawing 6158B-P-011 for remaining site area

THIS DRAWING RELATES TO ORDNANCE SURVEY
MAPS O.S. MAP REF. 3065-B, 3065-D, 3066-C,
3065-15 & 3066-11
OS DATUM TO MALIN HEAD



SUDS
(REFER TO ENGINEERS
DRAWINGS FOR DETAIL)

SUDS
(REFER TO ENGINEERS
DRAWINGS FOR DETAIL)

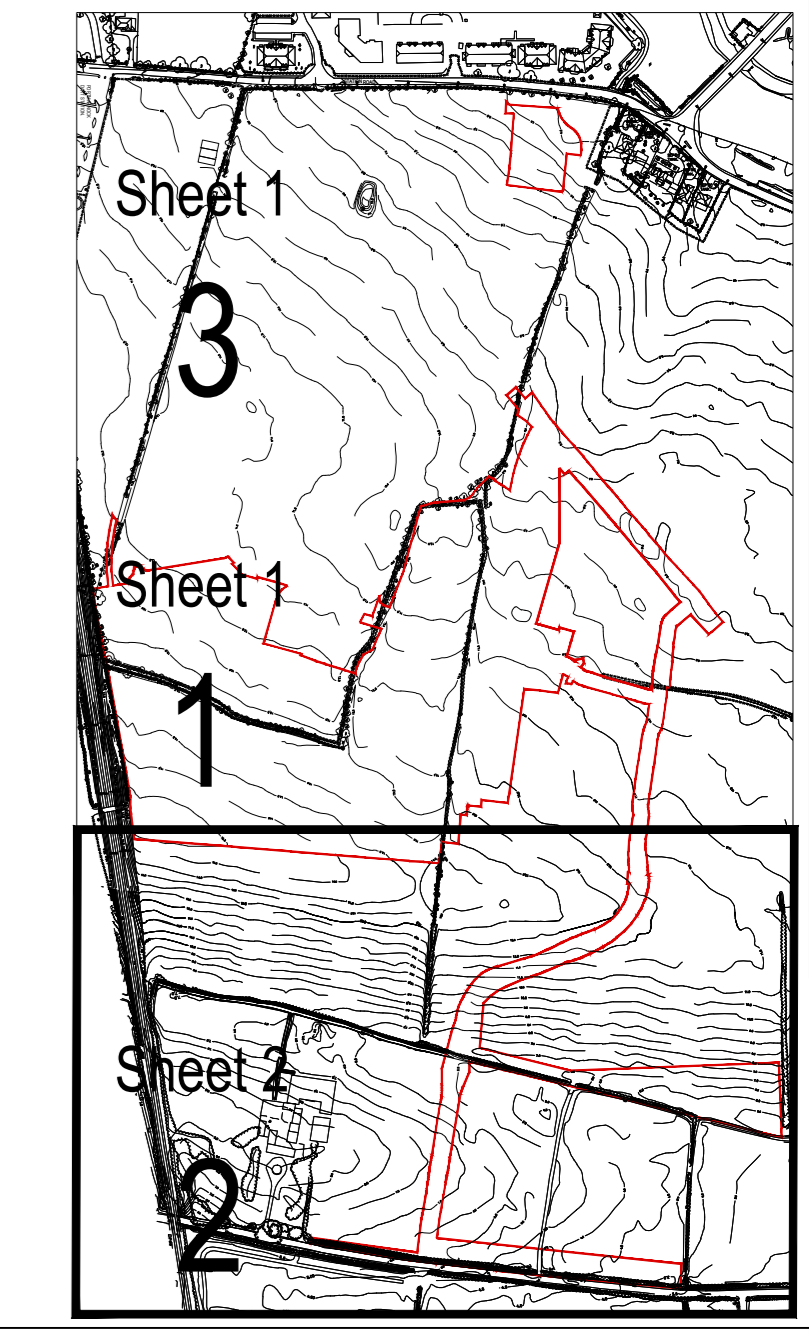
Moyne Road R123

Moyne Road R123

**TAKEN IN CHARGE -
COUNCIL MANAGED AREAS**

**TAKING IN CHARGE
LAYOUT PLAN**

Subject Site Keyplan (NTS)



APPLICATION SITE BOUNDARY

**REFER TO LANDSCAPE
ARCHITECT'S DRAWINGS
FOR ALL LANDSCAPING
DETAILS**

SITE LAYOUT PLAN

Notes:
1. Copyright Reserved
2. Work to signed dimensions only. Do not scale drawing.
3. The contractor is responsible for checking all levels and dimensions on site and shall refer all discrepancies to the Architect.
4. Where appropriate, for details of r.c. structure or mechanical and electrical details, see Engineers drawing.
5. Proprietary items shall be checked in accordance with manufacturers instructions.
6. Sizes of proprietary items shall be checked with manufacturer.
7. The contractor shall be responsible for the coordination of structures, finishes and services.
8. All work Information Only

Issue Status	Progress
Planning Application	■
Fire Cert	
Disability Cert	
Tender	
Construction	
All Built	
Information Only	

Rev	Date	Revision	Initials
01	07/05/21	APP Pre-Planning Submission	BD
02	26/11/21	SUD PLANNING APPLICATION TO APP	JK

Project: **Portmarnock South - Phase 1D**
Quintain Developments Ireland Limited

Drawing Title: **TAKING IN CHARGE DRAWING SHEET 2 of 3**

Drawing No: **6158B-P-012**

Scale: **1:500@A0** Rev: **02** Drawn: **AS** Date: **27/04/2021**

bkdarchitects
BURKE-KENNEDY DOYLE

© 2021 Quintain Developments Ireland Limited. All Rights Reserved. This drawing is the property of Quintain Developments Ireland Limited and shall not be reproduced without the prior written consent of Quintain Developments Ireland Limited.