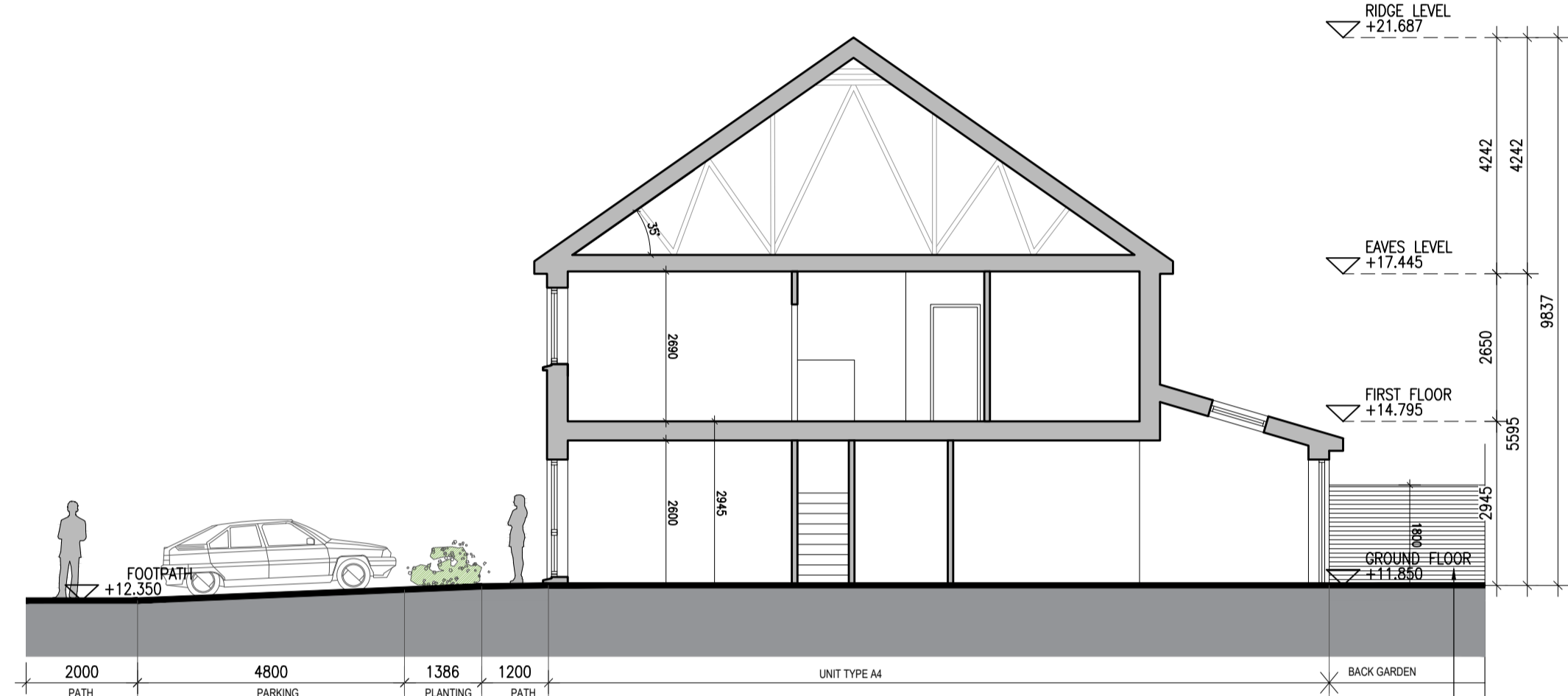
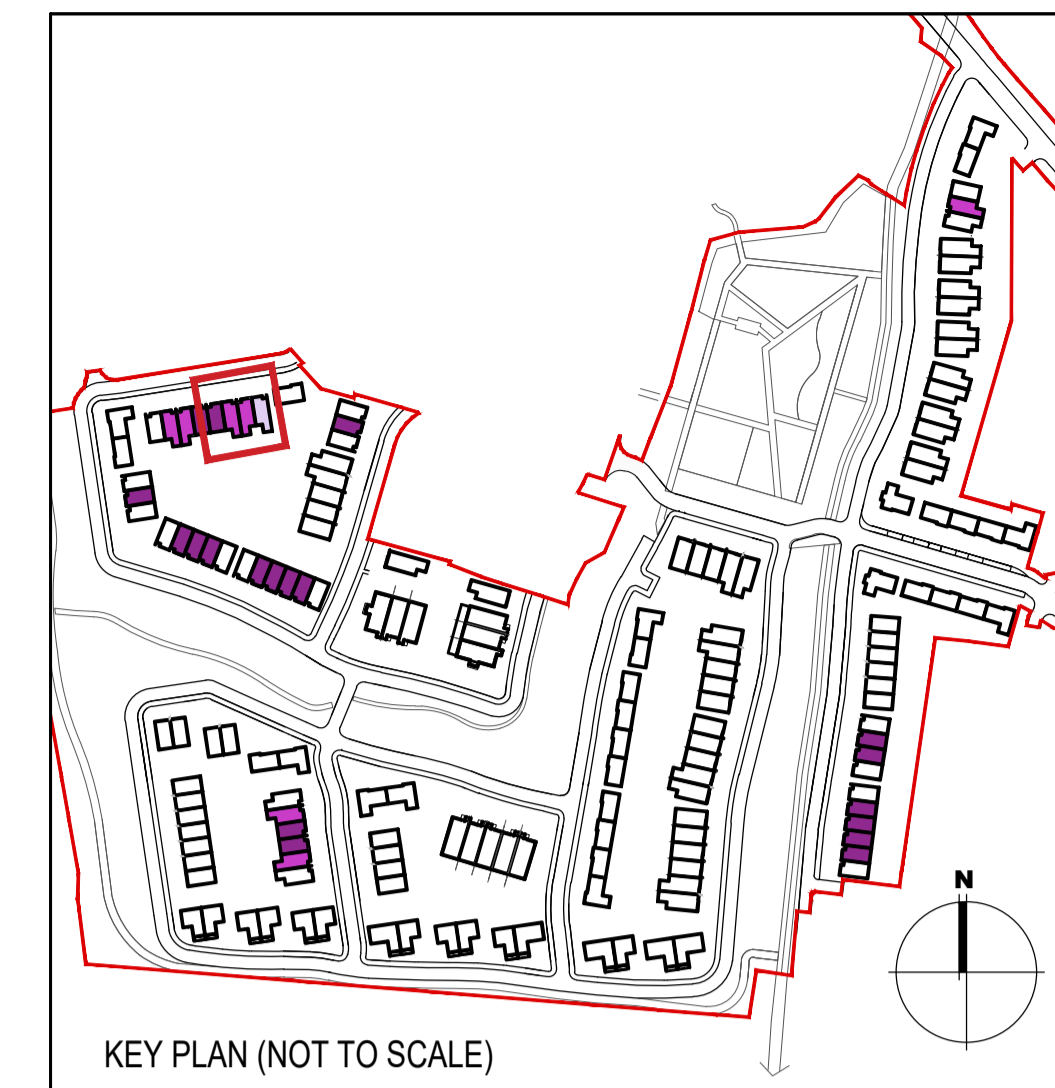


HOUSE TYPE A2		
Ground floor area	53.3m ²	
First floor area	55.3m ²	
Total Floor Area (3-bed unit):		108.6m²
HOUSE TYPE A4		
Ground floor area	62.3m ²	
First floor area	55.3m ²	
Total Floor Area (3-bed unit):		117.6m²
HOUSE TYPE A6		
Ground floor area	62.3m ²	
First floor area	55.3m ²	
Total Floor Area (3-bed unit):		117.6m²

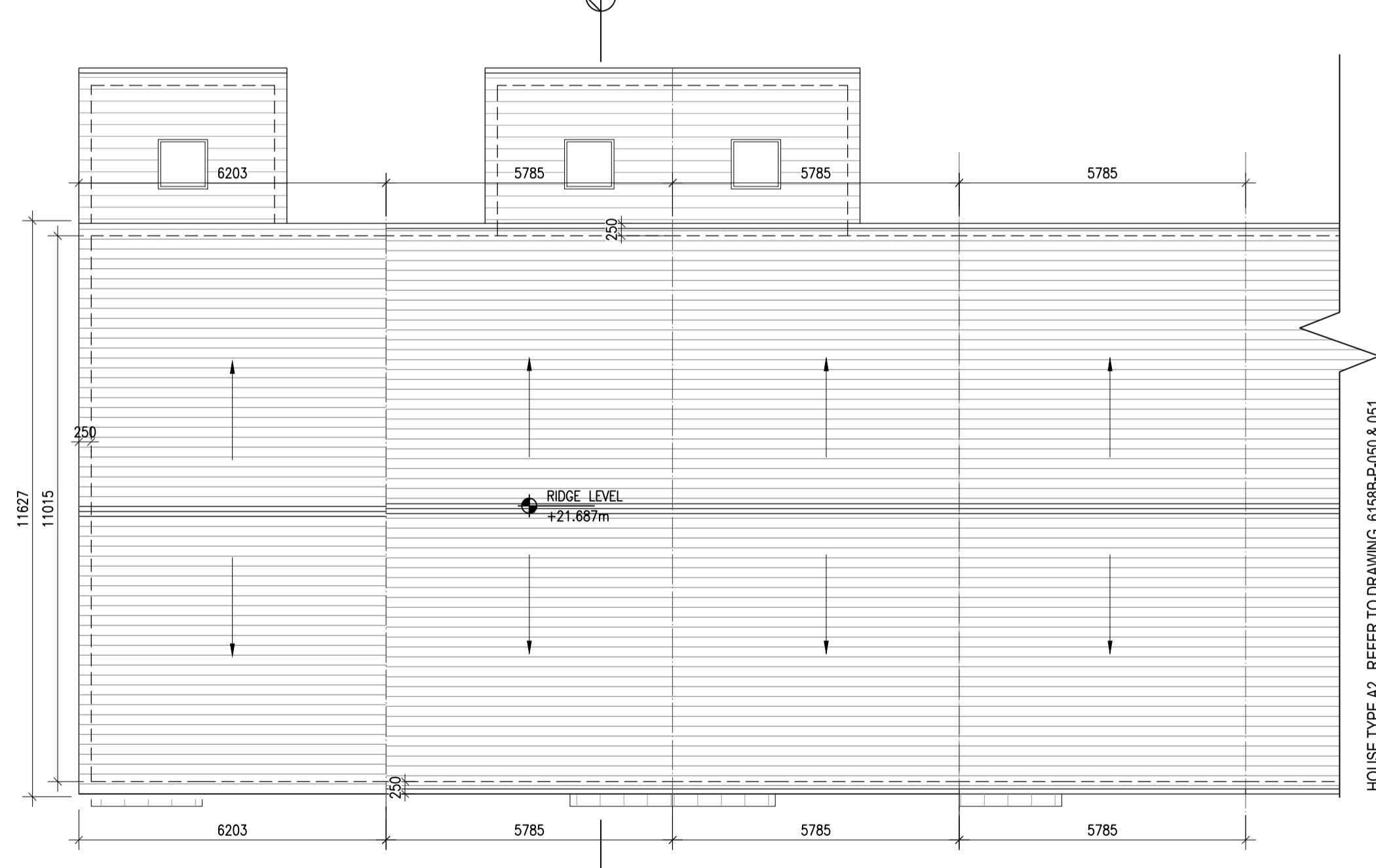
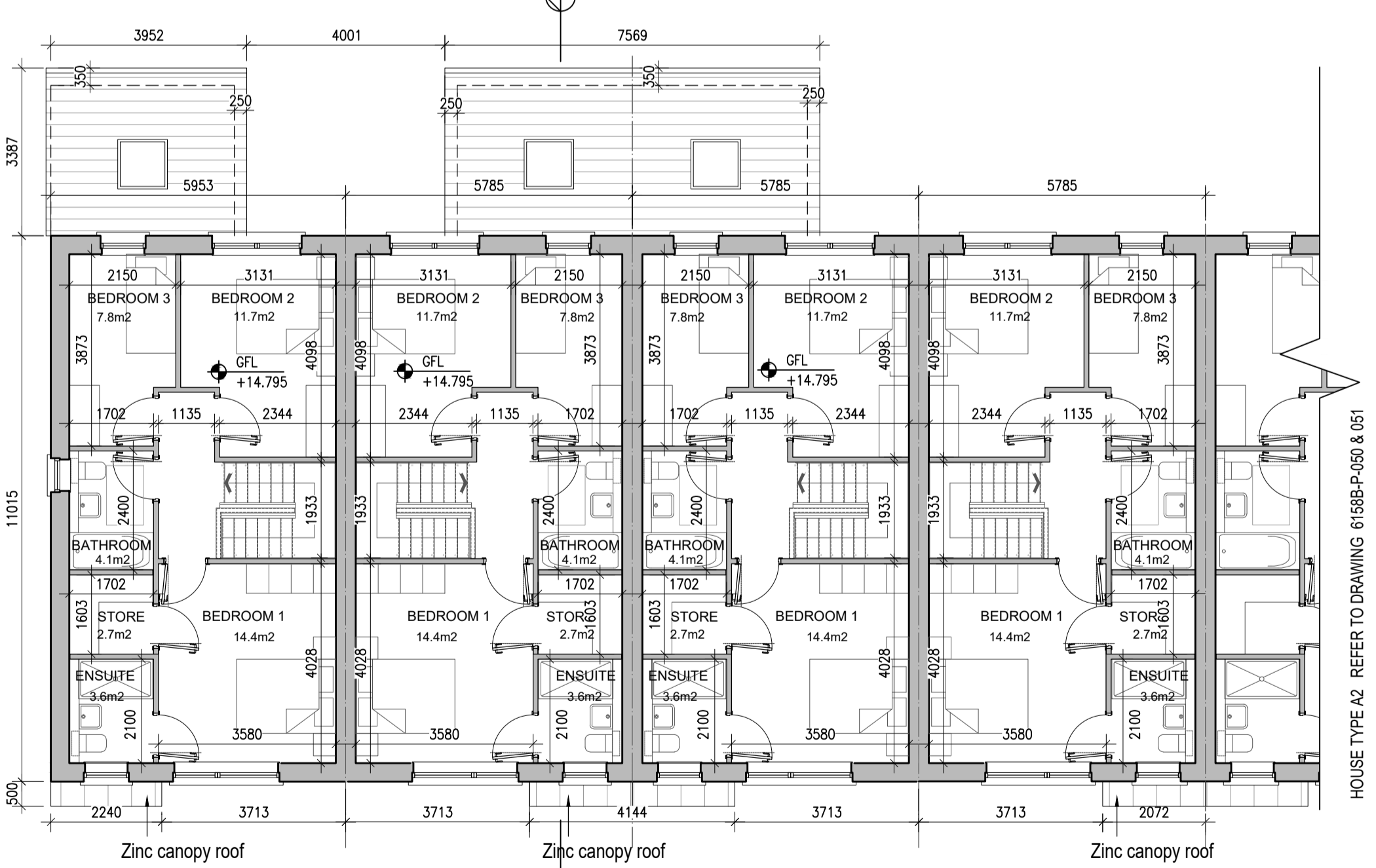


EXTERNAL FINISHES	
WALLS:	PAINTED SAND / CEMENT RENDER OR PROPRIETARY PRECOLOURED RENDER FINISH SELECTED BRICKWORK WHERE INDICATED ON DRAWINGS
WINDOWS:	SELECTED PROPRIETARY DOUBLE / TRIPLE GLAZED WINDOW SYSTEM WITH FRAMES TO APPROVED COLOUR OBSCURED GLAZING TO BATHROOMS AND EN-SUITES.
DOORS:	SELECTED PROPRIETARY DOORS AND GLAZED SIDE SCREENS TO APPROVED COLOUR.
RAINFALL GOODS:	uPVC OR POWDER COATED METAL GUTTERS AND RAINWATER PIPES TO SELECTED COLOUR.
MAIN ROOF:	CONCRETE ROOF TILES IN SELECTED COLOUR.
LOW LEVEL PROJECTION:	ZINC CANOPY ROOF TO REAR OF UNITS
OTHER ITEMS:	uPVC OR POWDER COATED METAL FASCIAS, SOFFITS AND BARGE BOARDS PAINTED MILDSTEEL RAILINGS AND BALUSTRADES

TYPE A6 TYPE A4 TYPE A4 TYPE A2

01 Type A2, A4, A6 - Ground Floor Plans
1:1000A1 3 BED HOUSE

04 Type A4, A6 - Section
1:1000A1 3 BED HOUSE



TYPE A6 TYPE A4 TYPE A4 TYPE A2

02 Type A2, A4, A6 - First Floor Plans
1:1000A1 3 BED HOUSE

03 Type A2, A4, A6 - Roof Level
1:1000A1 3 BED HOUSE

HOUSES TYPES	Numbers of units
Type A1/A2/A3 3 bed [2st.] 108.6 sqm	32
Type A4/A5/A6 3 bed [2st.] 117.6 sqm	11
Type B1/B2/B3 3 bed [2st.] 110.6 sqm	22
Type C1 3 bed [2st.] 118 sqm	9
Type C2 3 bed [2st.] 117.4 sqm	8
Type C3 3 bed [2st.] 118.6 sqm	1
Type D1 4 bed [2st.] 141 sqm	9
Type D2 4 bed [2st.] 142 sqm	2
Type F1 4 bed [2st.] 134.4 sqm	11
Type F2 4 bed [2st.] 135.6 sqm	5
Type F3 4 bed [2st.] 146.5 sqm	2
Type F4 4 bed [2st.] 146.4 sqm	5
Type F5 4 bed [2st.] 147.8 sqm	17
Type G 3 bed [1.5st.] 114 sqm	11
Type H 4 bed [1.5st.] 147 sqm	5
DUPLEXES	
Type J1/J2 2 bed Apart. [1st.] 78.5 sqm	9
Type K1/K2 3bed Duplex [2st.] 114.4 sqm	9
Type J3 2 bed Apart. [1st.] 83.5 sqm	2
Type K3 3bed Duplex [2st.] 114.4 sqm	2
Total Residential Units	172

REFER TO LANDSCAPE ARCHITECT'S DRAWINGS FOR ALL LANDSCAPING DETAILS INCLUDING BOUNDARY TREATMENTS

HOUSE TYPE A2, A4, A6

Notes 1. Copyright Reserved 2. Work to signed dimensions only. Do not scale drawing 3. The contractor is responsible for checking all levels and dimensions on site and shall refer all discrepancies to the Architect 4. Where appropriate, for details of r.c. structure, or mechanical and electrical details, see Engineers drawings 5. Proprietary items shall be fixed in strict accordance with manufacturers instructions. 6. Sizes of proprietary items shall be checked with manufacturer. 7. The contractor shall be responsible for the coordination of structures, finishes and services.	Issue Status Progress Planning Application Fire Cert Disability Cert Tender Construction As Built	No. Date Revision 01 26.11.2021 SHD PLANNING APPLICATION TO ABP	Initials SH	Project Portmarnock South Phase 1D Quintain Developments Ireland Limited	6-7 HARPOUR TERRACE, DUBLIN 2, IRELAND T: +353 1 478 2400 F: +353 1 478 7305 www.bkd.ie
				Drawing Title House Type A2, A4, A6 - Plans, Section	
Scale 1:100@A1 Rev 01 Drawn SH Date 26.11.2021				bkdarchitects BURKE-KENNEDY DOYLE	