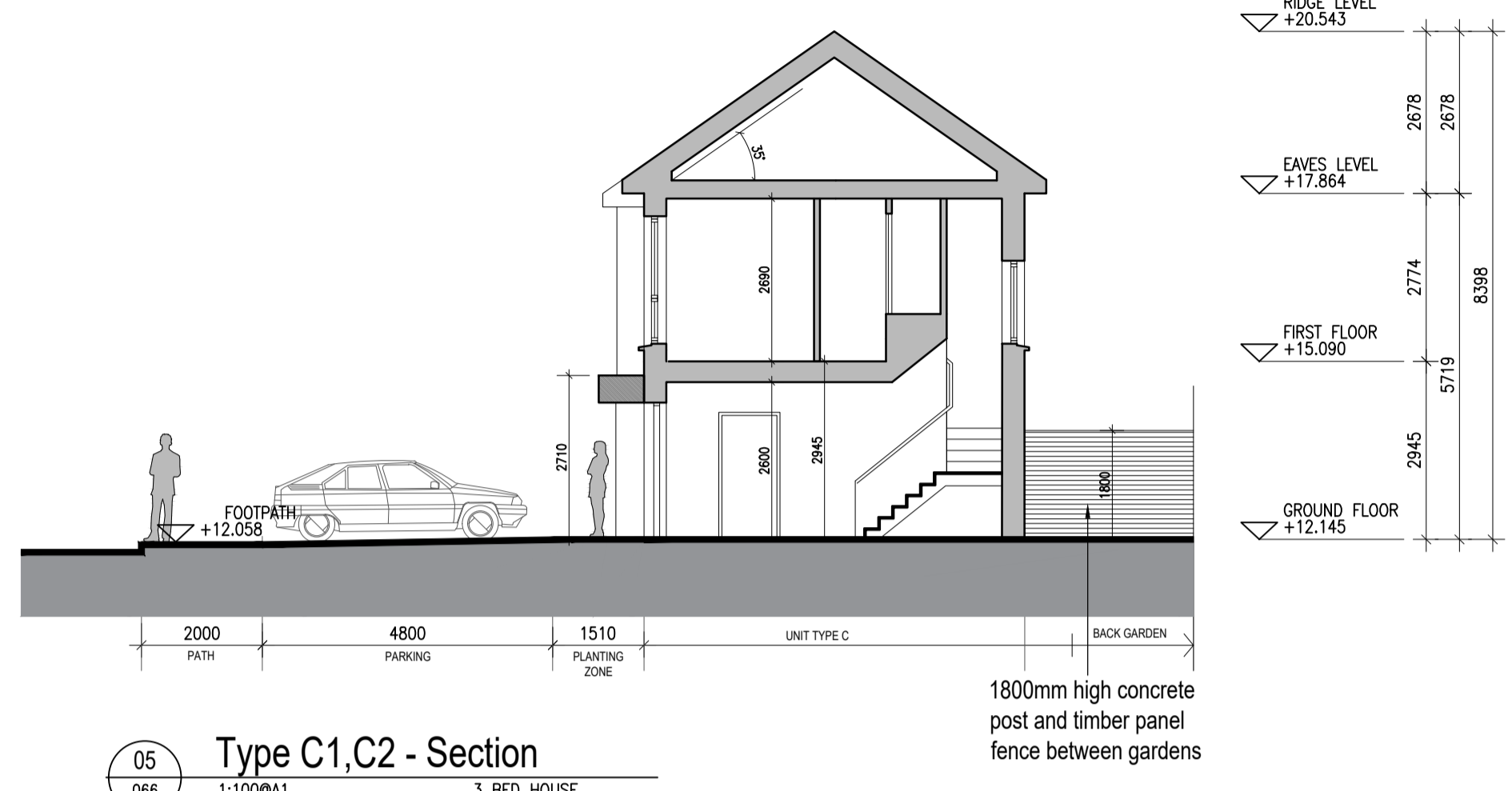


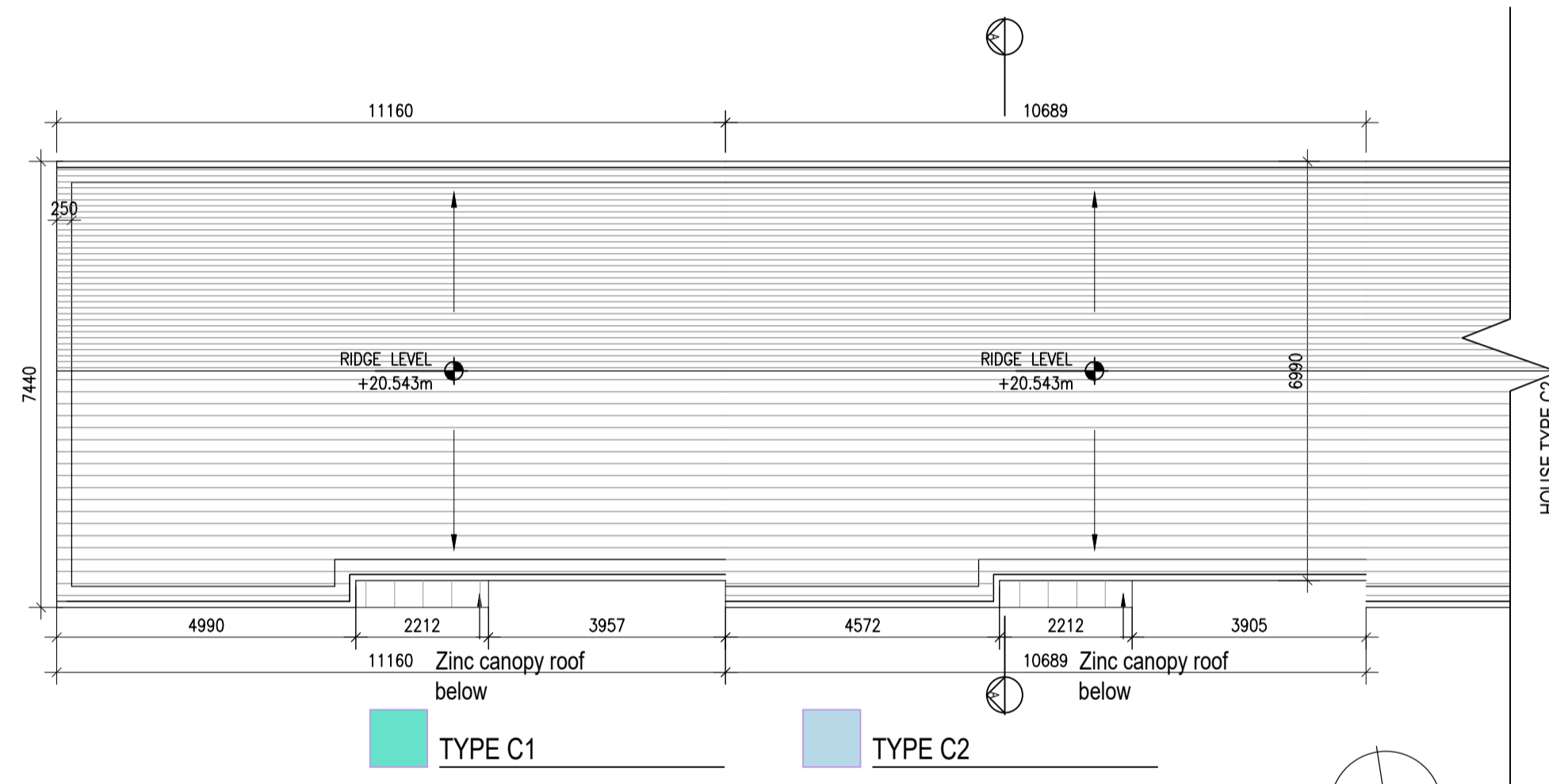


01 Type C1, C2 - Ground Floor Plans
1:100@A1 3 BED HOUSE

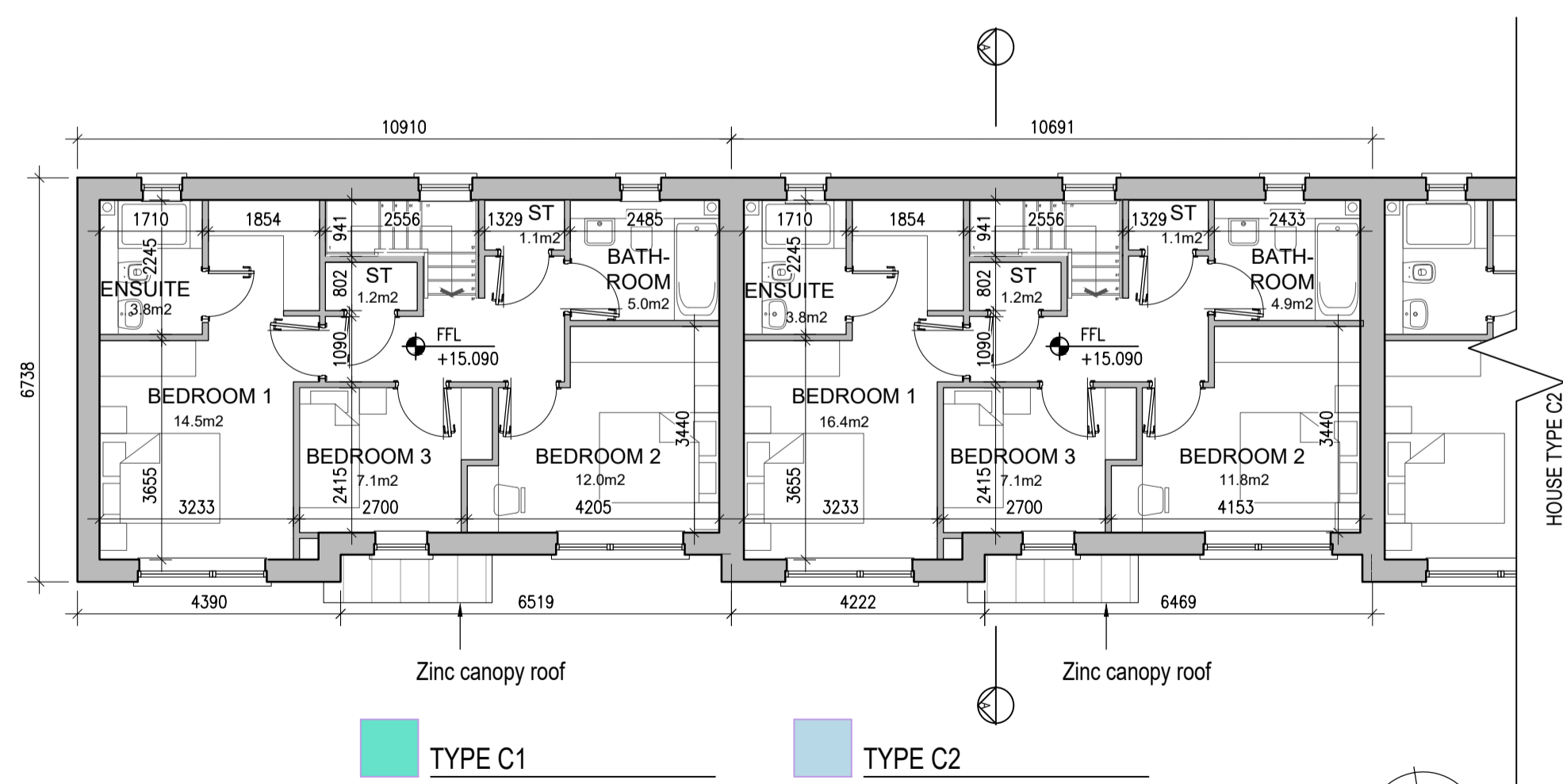
HOUSE TYPE C2	Ground floor area	58.7m ²	HOUSE TYPE C1	Ground floor area	59.0m ²
	First floor area	58.7m ²		First floor area	59.0m ²
	Total Floor Area (3-bed unit):	117.4m ²		Total Floor Area (3-bed unit):	118.0m ²



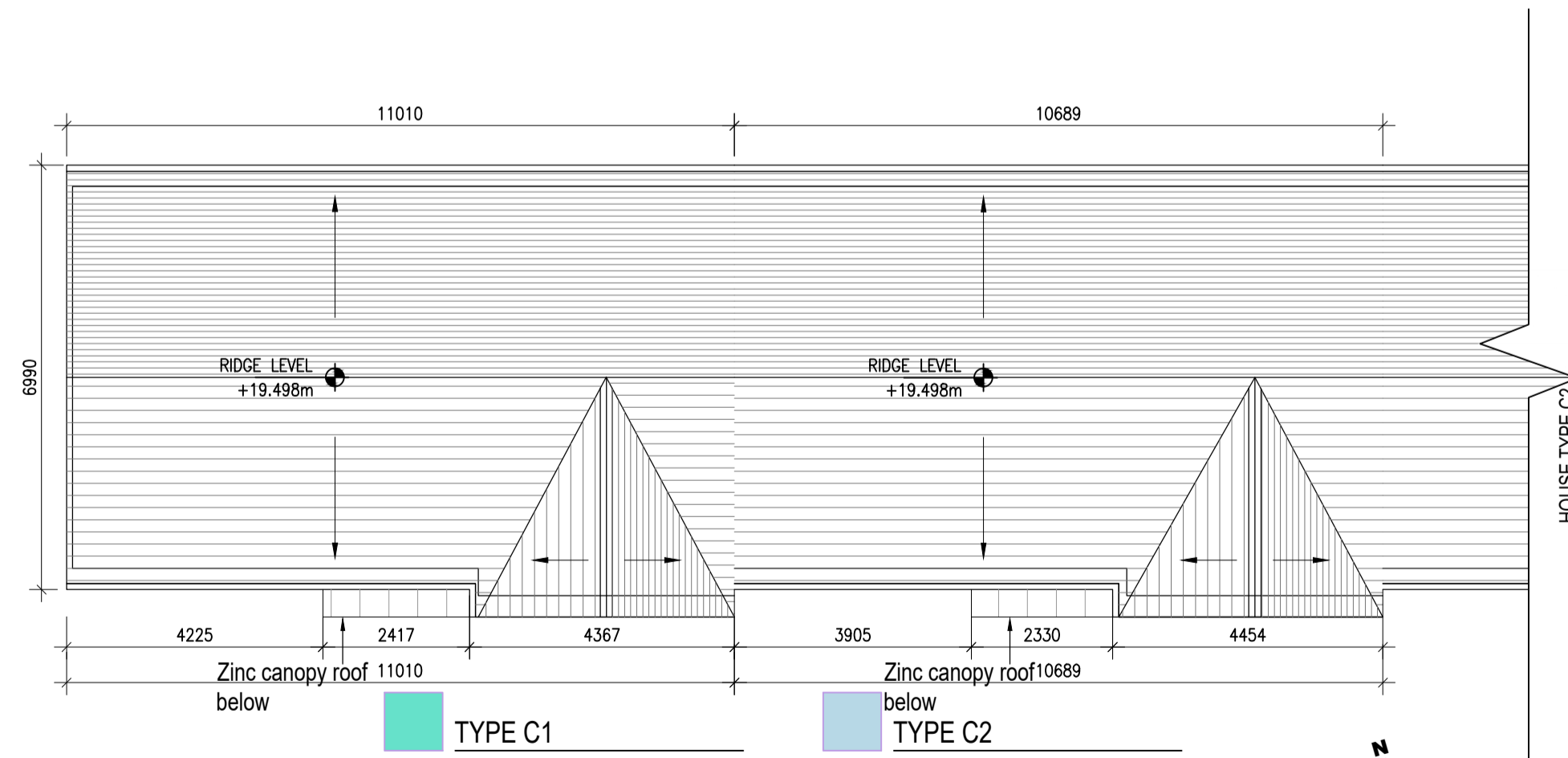
05 Type C1, C2 - Section
1:100@A1 3 BED HOUSE



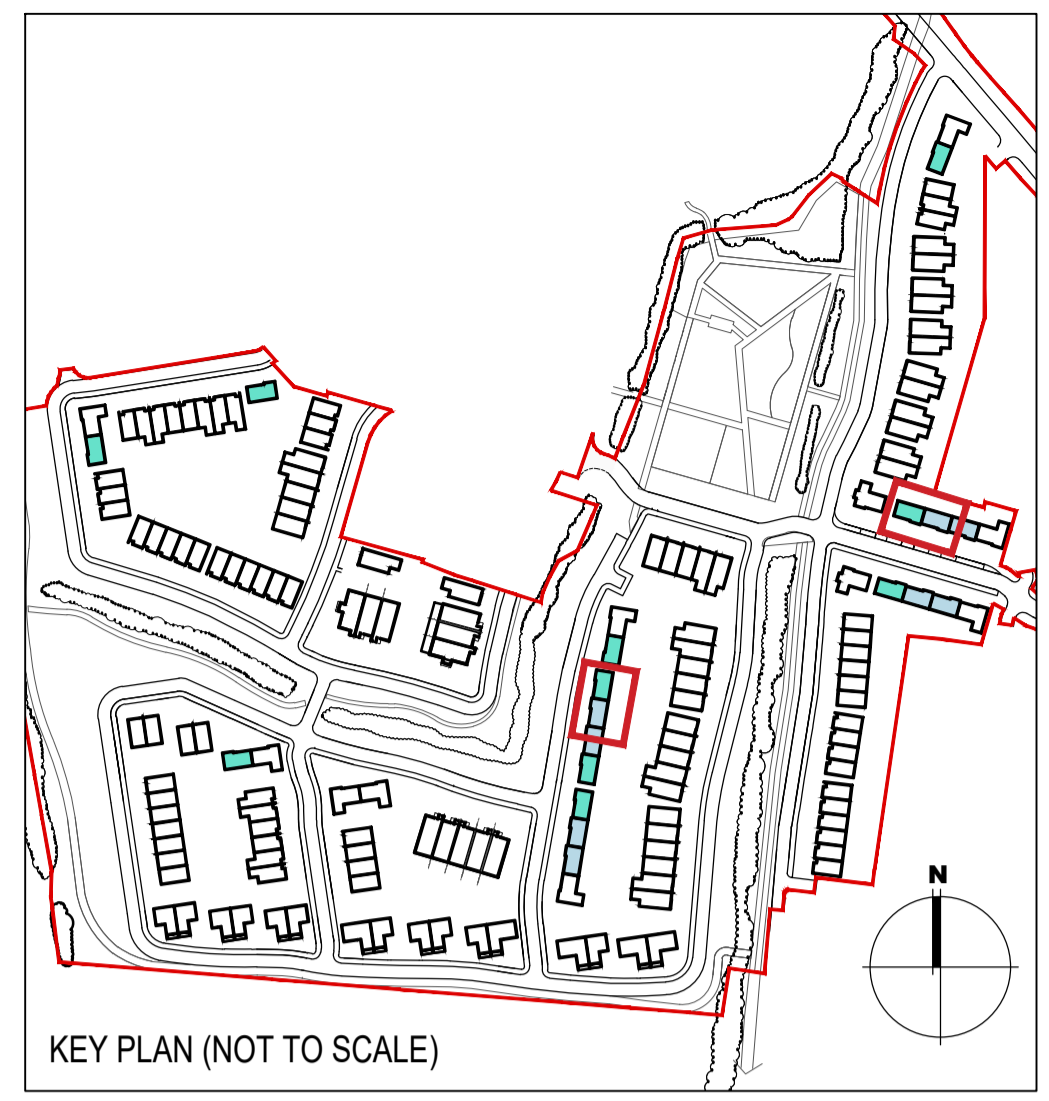
03 Type C1, C2 - Roof Level
1:100@A1 3 BED HOUSE



02 Type C1, C2 - First Floor Plans
1:100@A1 3 BED HOUSE



04 Type C1, C2 - Roof Level - Maynetown (mirrored plan)
1:100@A1 3 BED HOUSE



EXTERNAL FINISHES

WALLS: PAINTED SAND / CEMENT RENDER OR PROPRIETARY PRECOLOURED RENDER FINISH
SELECTED BRICKWORK WHERE INDICATED ON DRAWINGS

WINDOWS: SELECTED PROPRIETARY DOUBLE / TRIPLE GLAZED WINDOW SYSTEM WITH FRAMES TO APPROVED COLOUR
OBSCURED GLAZING TO BATHROOMS AND EN-SUITES.

DOORS: SELECTED PROPRIETARY DOORS AND GLAZED SIDE SCREENS TO APPROVED COLOUR.

RAINWATER GOODS: uPVC OR POWDER COATED METAL GUTTERS AND RAINWATER PIPES TO SELECTED COLOUR.

MAIN ROOF: CONCRETE ROOF TILES IN SELECTED COLOUR.

LOW LEVEL PROJECTION: ZINC CANOPY ROOF TO REAR OF UNITS

OTHER ITEMS: uPVC OR POWDER COATED METAL FASCIAS, SOFFITS AND BARGE BOARDS
PAINTED MILDSTEEL RAILINGS AND BALUSTRADES

HOUSES TYPES	Configuration	Area	Numbers of units
Type A1/A2/A3	3 bed [2st.]	108.6 sqm	32
Type A4/A5/A6	3 bed [2st.]	117.6 sqm	11
Type B1/B2/B3	3 bed [2st.]	110.6 sqm	22
Type C1	3 bed [2st.]	118 sqm	9
Type C2	3 bed [2st.]	117.4 sqm	8
Type C3	3 bed [2st.]	118.6 sqm	1
Type D1	4 bed [2st.]	141 sqm	9
Type D2	4 bed [2st.]	142 sqm	2
Type F1	4 bed [2st.]	134.4 sqm	11
Type F2	4 bed [2st.]	135.6 sqm	5
Type F3	4 bed [2st.]	146.5 sqm	2
Type F4	4 bed [2st.]	146.4 sqm	5
Type F5	4 bed [2st.]	147.8 sqm	17
Type G	3 bed [1.5st.]	114 sqm	11
Type H	4 bed [1.5st.]	147 sqm	5
DUPLEXES			
Type J1/J2	2 bed Apart. [1st.]	78.5 sqm	9
Type K1/K2	3bed Duplex [2st.]	114.4 sqm	9
Type J3	2 bed Apart. [1st.]	83.5 sqm	2
Type K3	3bed Duplex [2st.]	114.4 sqm	2
Total Residential Units			172

REFER TO LANDSCAPE ARCHITECT'S DRAWINGS FOR ALL LANDSCAPING DETAILS INCLUDING BOUNDARY TREATMENTS

HOUSE TYPE C1, C2

Notes	Issue Status	No.	Date	Revision	Initials
1. Copyright Reserved	Progress	01	26.11.2021	SHD PLANNING APPLICATION TO ABP	RT
2. Work to agreed dimensions only. Do not scale drawing	Planning Application				
3. The contractor is responsible for checking all levels and dimensions on site and shall refer all discrepancies to the Architect	Fire Cert				
4. Where appropriate, for details of r.c. structure, or mechanical and electrical details, see Engineers drawings	Disability Cert				
5. Proprietary items shall be fixed in strict accordance with manufacturers instructions.	Tender				
6. Sizes of proprietary items shall be checked with manufacturer.	Construction				
7. The contractor shall be responsible for the coordination of structure, finishes and services.	As Built				

Project	Portmarnock South Phase 1D Quintain Developments Ireland Limited	6-7 HARICOURT TERRACE, DUBLIN 2, IRELAND t: +353-1-6782400 f: +353-1-6787395 e: architects@bkd.ie
Drawing Title	House Type C1, C2 - Plans, Section	www.bkd.ie
Drawing No.	6158B-P-066	bkdarchitects BURKE-KENNEDY DOYLE
Scale	1:100@A1	
Rev	01	
Drawn	RT	
Date	26.11.2021	