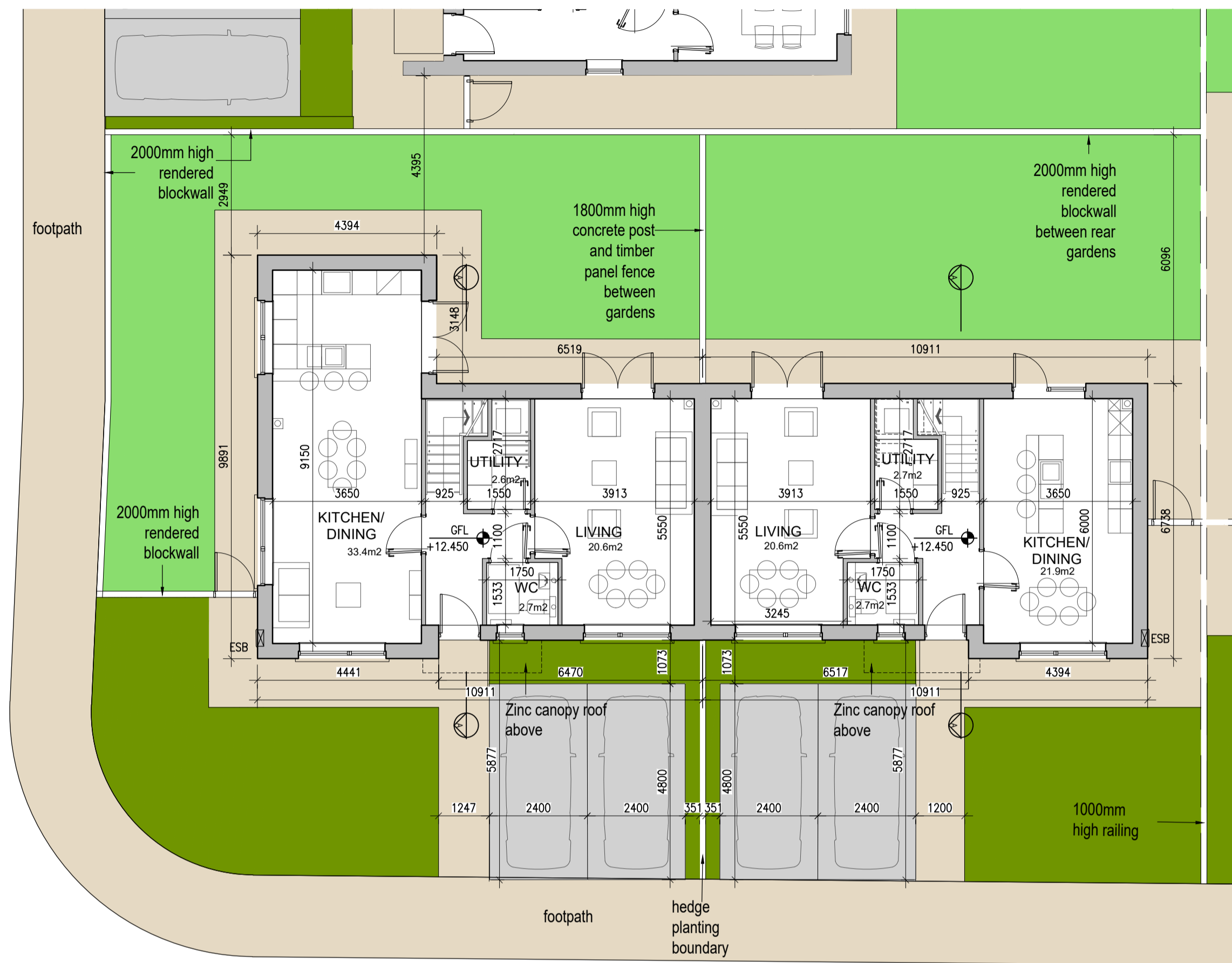
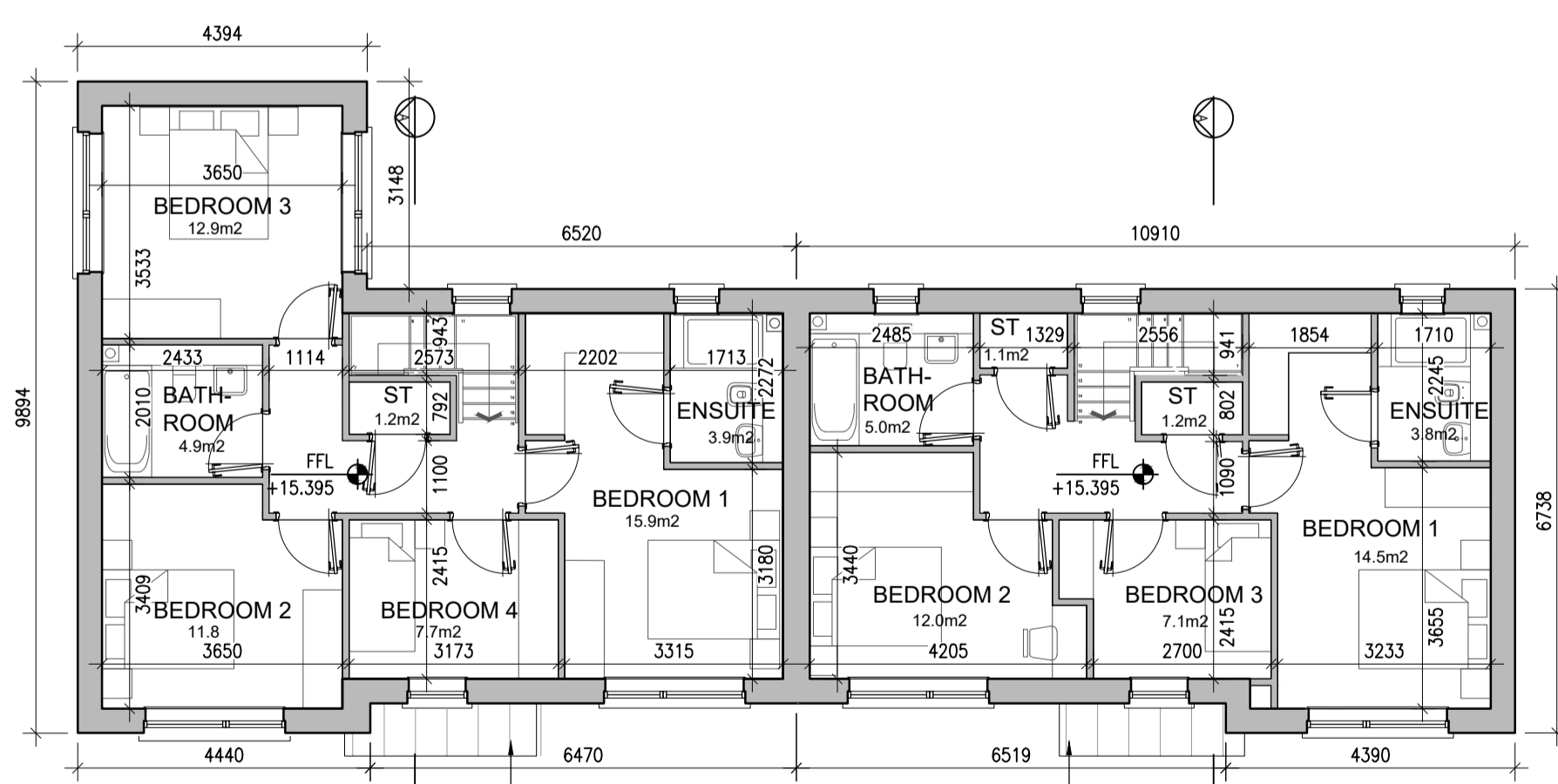


<b>HOUSE TYPE D1</b>	
Ground floor area	70.5m <sup>2</sup>
First floor area	70.5m <sup>2</sup>
<b>Total Floor Area (3-bed unit):</b>	<b>141.0m<sup>2</sup></b>

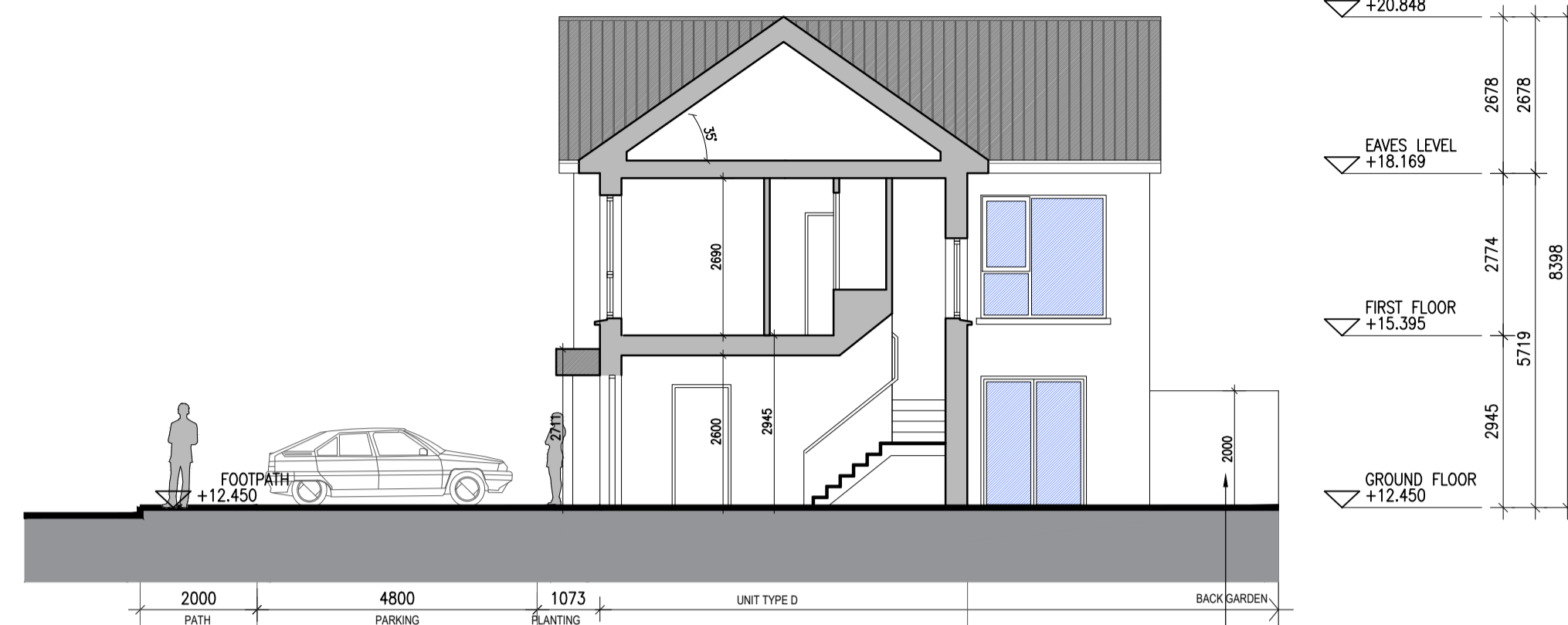
<b>HOUSE TYPE C1</b>	
Ground floor area	59.0m <sup>2</sup>
First floor area	59.0m <sup>2</sup>
<b>Total Floor Area (3-bed unit):</b>	<b>118.0m<sup>2</sup></b>



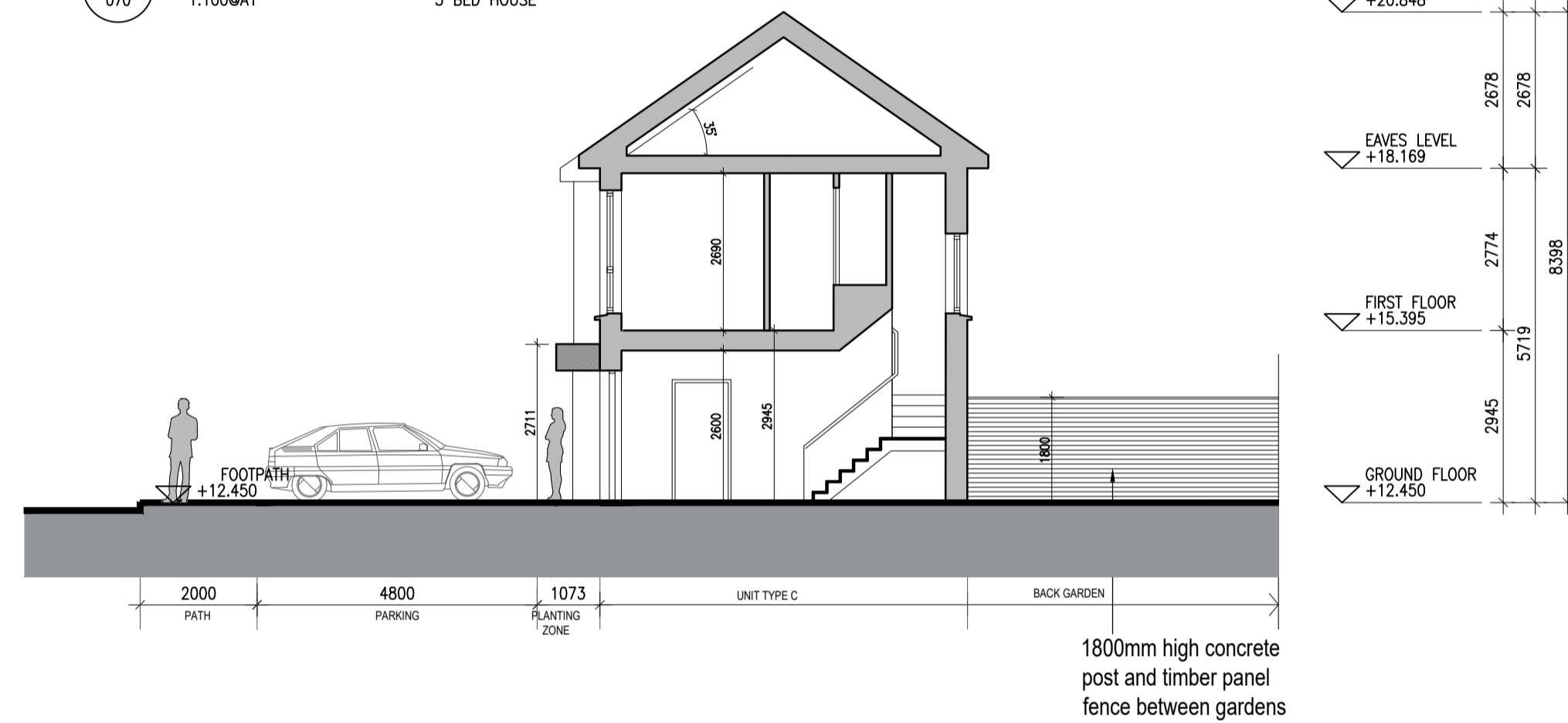
01 Type D1, C1 - Ground Floor Plans  
1:100@A1 3 BED HOUSE



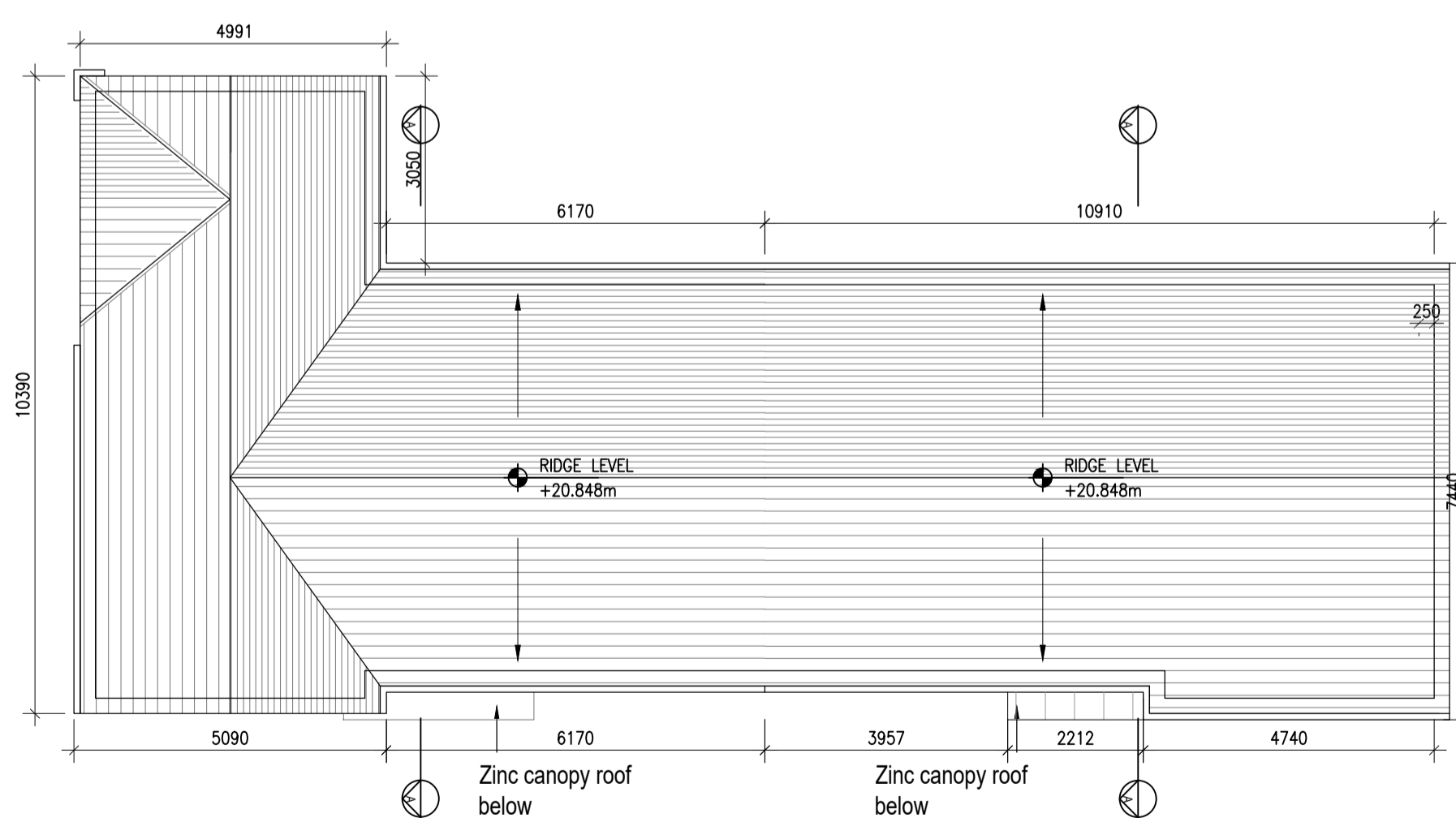
02 Type D1,C1 - First Floor Plans  
1:100@A1 3 BED HOUSE



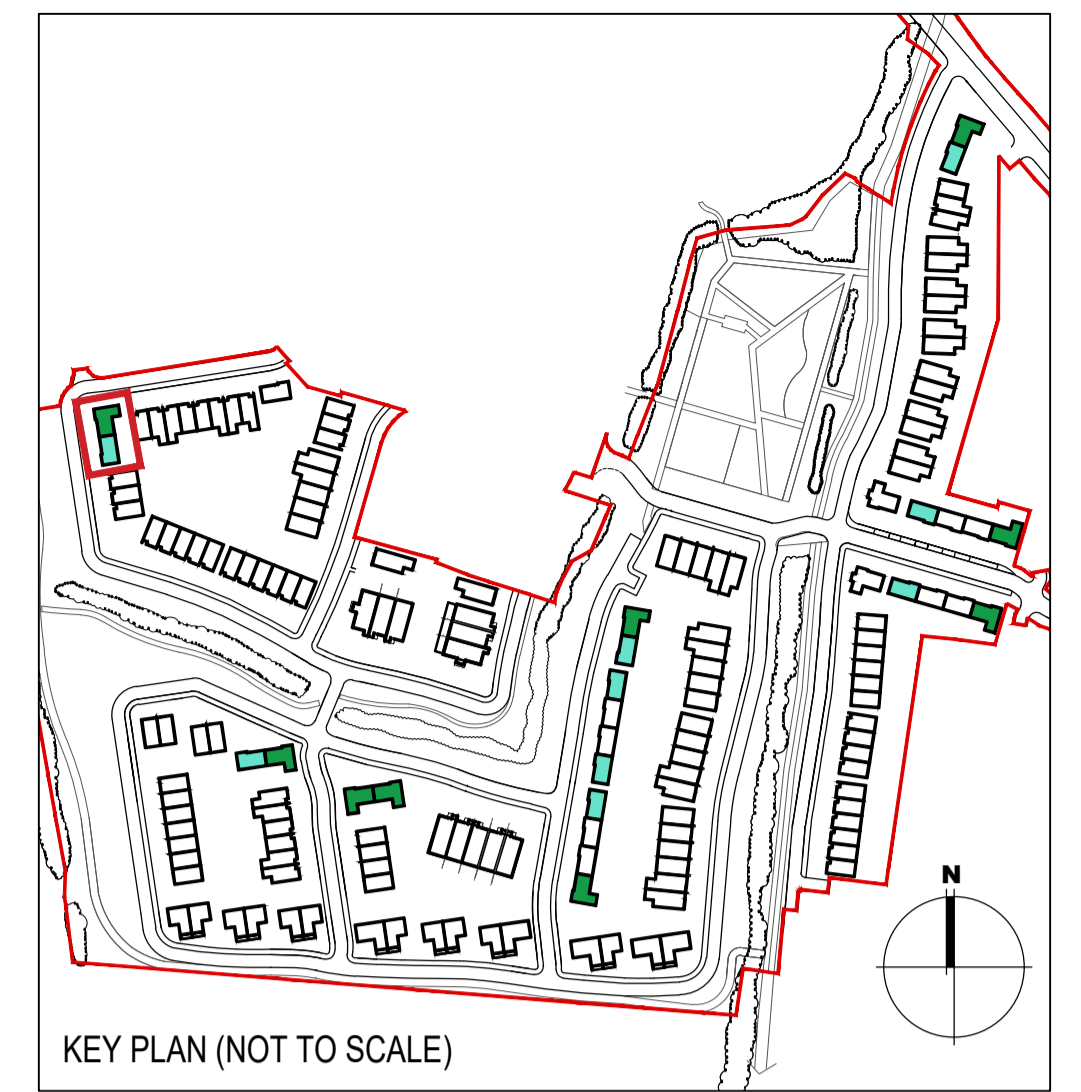
04 Type D1- Section  
1:100@A1 3 BED HOUSE



04 Type C1- Section  
1:100@A1 3 BED HOUSE



03 Type D1,C1 - Roof Level  
1:100@A1 3 BED HOUSE



**EXTERNAL FINISHES**

- WALLS:** PAINTED SAND / CEMENT RENDER OR PROPRIETARY PRECOLOURED RENDER FINISH  
SELECTED BRICKWORK WHERE INDICATED ON DRAWINGS
- WINDOWS:** SELECTED PROPRIETARY DOUBLE / TRIPLE GLAZED WINDOW SYSTEM WITH FRAMES TO APPROVED COLOUR  
OBSCURED GLAZING TO BATHROOMS AND EN-SUITES.
- DOORS:** SELECTED PROPRIETARY DOORS AND GLAZED SIDE SCREENS TO APPROVED COLOUR.
- RAINWATER GOODS:** uPVC OR POWDER COATED METAL GUTTERS AND RAINWATER PIPES TO SELECTED COLOUR.
- MAIN ROOF:** CONCRETE ROOF TILES IN SELECTED COLOUR.
- LOW LEVEL PROJECTION:** ZINC CANOPY ROOF TO REAR OF UNITS
- OTHER ITEMS:** uPVC OR POWDER COATED METAL FASCIAS, SOFFITS AND BARGE BOARDS  
PAINTED MILDSTEEL RAILINGS AND BALUSTRADES

HOUSES TYPES	Numbers of units
Type A1/A2/A3	3 bed [ 2st. ] 108.6 sqm 32
Type A4/A5/A6	3 bed [ 2st. ] 117.6 sqm 11
Type B1/B2/B3	3 bed [ 2st. ] 110.6 sqm 22
Type C1	3 bed [ 2st. ] 118 sqm 9
Type C2	3 bed [ 2st. ] 117.4 sqm 8
Type C3	3 bed [ 2st. ] 118.6 sqm 1
Type D1	4 bed [ 2st. ] 141 sqm 9
Type D2	4 bed [ 2st. ] 142 sqm 2
Type F1	4 bed [ 2st. ] 134.4 sqm 11
Type F2	4 bed [ 2st. ] 135.6 sqm 5
Type F3	4 bed [ 2st. ] 146.5 sqm 2
Type F4	4 bed [ 2st. ] 146.4 sqm 5
Type F5	4 bed [ 2st. ] 147.8 sqm 17
Type G	3 bed [ 1.5st. ] 114 sqm 11
Type H	4 bed [ 1.5st. ] 147 sqm 5
<b>DUPLEXES</b>	
Type J1/J2	2 bed Apart. [ 1st. ] 78.5 sqm 9
Type K1/K2	3bed Duplex [ 2st. ] 114.4 sqm 9
Type J3	2 bed Apart. [ 1st. ] 83.5 sqm 2
Type K3	3bed Duplex [ 2st. ] 114.4 sqm 2
<b>Total Residential Units</b>	
	<b>172</b>

**REFER TO LANDSCAPE ARCHITECT'S DRAWINGS FOR ALL LANDSCAPING DETAILS INCLUDING BOUNDARY TREATMENTS**

**HOUSE TYPE D1, C1**

Notes	Issue Status	No.	Date	Revision	Initials
1. Copyright Reserved	Progress	01	26.11.2021	SHD PLANNING APPLICATION TO ABP	RT
2. Work to legend dimensions only. Do not scale drawing	Planning Application				
3. The contractor is responsible for checking all levels and dimensions on site and shall refer all discrepancies to the Architect	Fire Cert				
4. Where appropriate, for details of r.c. structure, or mechanical and electrical details, see Engineers drawings	Disability Cert				
5. Proprietary items shall be fixed in strict accordance with manufacturers instructions.	Tender				
6. Sizes of proprietary items shall be checked with manufacturer.	Construction				
7. The contractor shall be responsible for the coordination of structures, finishes and services.	As Built				
Standard: 6158B-P-070-Type D1,C1 - Plans, Section.dwg 26/11/2021 11:07:51	Information Only: Plans, Section				

Project	Portmarnock South Phase 1D Quintain Developments Ireland Limited	6-7 HARCOURT TERRACE, DUBLIN 2, IRELAND 1-353-1-678-2400 1-353-1-678-7395 www.bkd.ie
Drawing Title	House Type D1, C1 - Plans, Section	
Drawing No	6158B-P-070	
Scale	1:100@A1	Rev 01
Drawn	RT	Date 26.11.2021

**bkdarchitects**  
BURKE-KENNEDY DOYLE