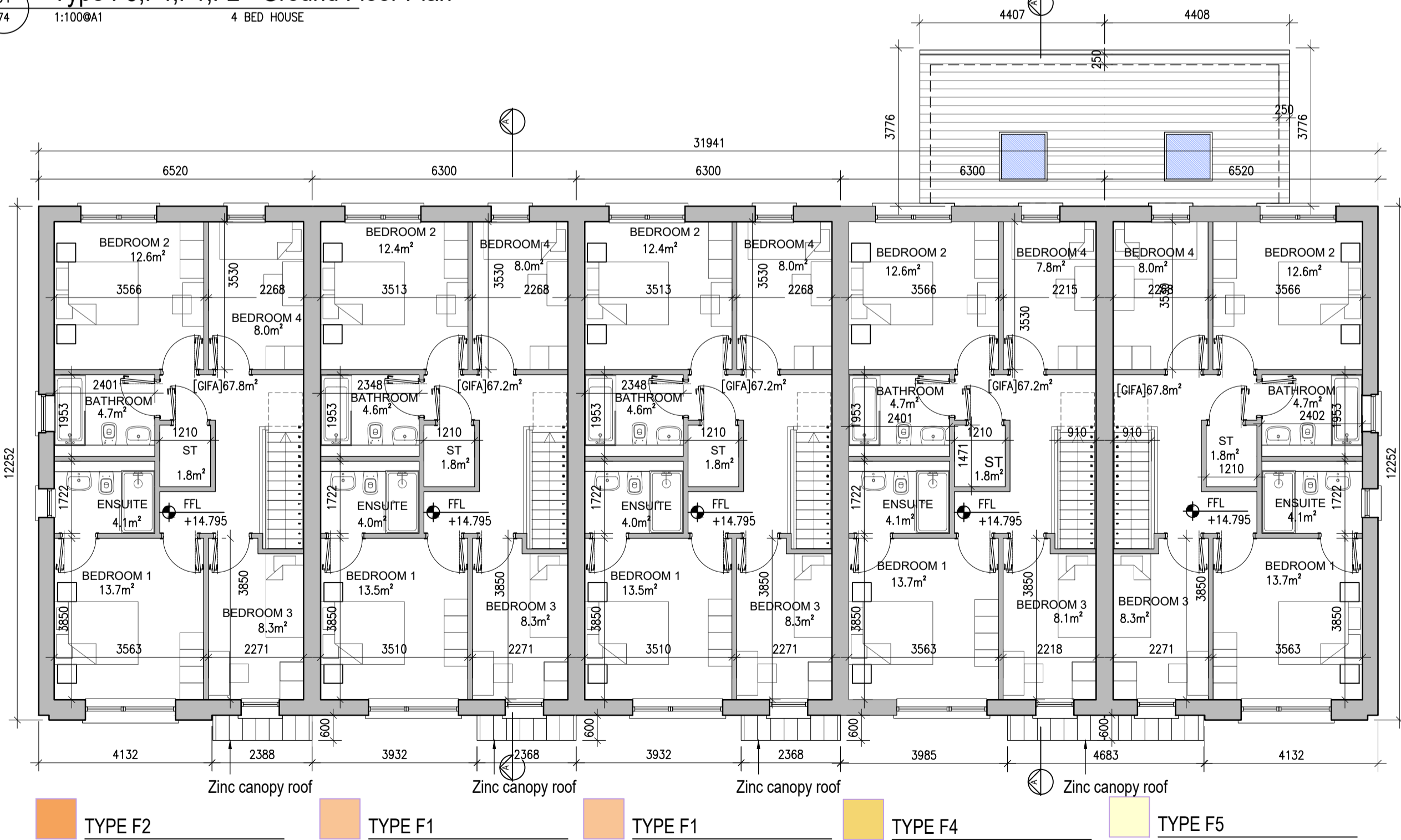
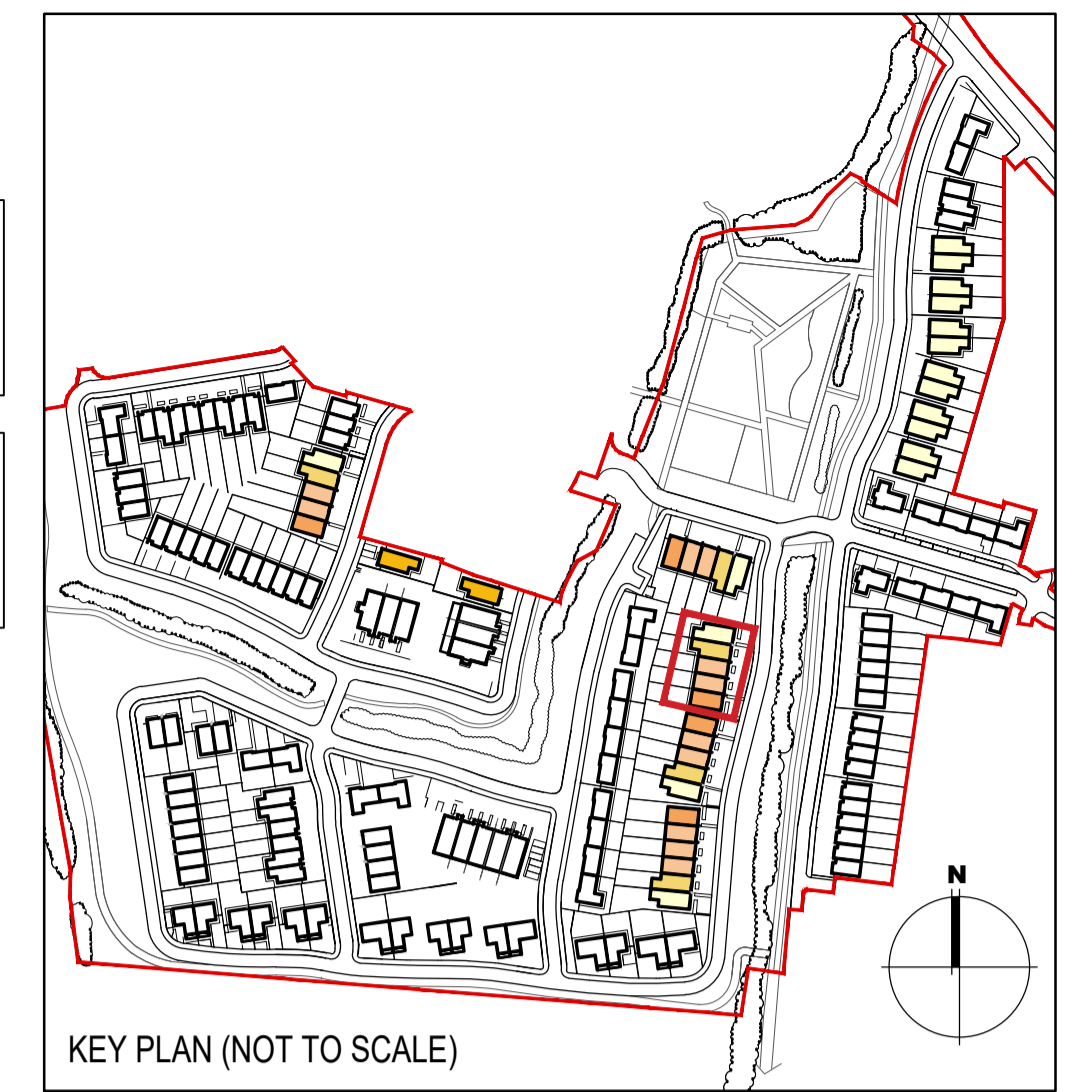


01 Type F5,F4,F1,F2 - Ground Floor Plan
1:100@A1 4 BED HOUSE



02 Type F5,F4,F1,F2 - First Floor Plan
1:100@A1 4 BED HOUSE

HOUSE TYPE F1	Ground floor area 67.2m ²		
	First floor area 67.2m ²		
	Total Floor Area (4-bed unit):	134.4m ²	
HOUSE TYPE F2	Ground floor area 67.8m ²		
	First floor area 67.8m ²		
	Total Floor Area (4-bed unit):	135.6m ²	
HOUSE TYPE F4	Ground floor area 79.3m ²		
	First floor area 67.1m ²		
	Total Floor Area (4-bed unit):	146.4m ²	
HOUSE TYPE F5	Ground floor area 80.0m ²		
	First floor area 67.8m ²		
	Total Floor Area (4-bed unit):	147.8m ²	



EXTERNAL FINISHES

- WALLS:** PAINTED SAND / CEMENT RENDER OR PROPRIETARY PRECOLOURED RENDER FINISH
SELECTED BRICKWORK WHERE INDICATED ON DRAWINGS
- WINDOWS:** SELECTED PROPRIETARY DOUBLE / TRIPLE GLAZED WINDOW SYSTEM WITH FRAMES TO APPROVED COLOUR
OBSCURED GLAZING TO BATHROOMS AND EN-SUITES.
- DOORS:** SELECTED PROPRIETARY DOORS AND GLAZED SIDE SCREENS TO APPROVED COLOUR.
- RAINWATER GOODS:** uPVC OR POWDER COATED METAL GUTTERS AND RAINWATER PIPES TO SELECTED COLOUR.
- MAIN ROOF:** CONCRETE ROOF TILES IN SELECTED COLOUR.
- LOW LEVEL PROJECTION:** ZINC CANOPY ROOF TO REAR OF UNITS
- OTHER ITEMS:** uPVC OR POWDER COATED METAL FASCIAS, SOFFITS AND BARGE BOARDS
PAINTED MILDSTEEL RAILINGS AND BALUSTRADES

HOUSES TYPES	Numbers of units
Type A1/A2/A3 3 bed [2st.] 108.6 sqm	32
Type A4/A5/A6 3 bed [2st.] 117.6 sqm	11
Type B1/B2/B3 3 bed [2st.] 110.6 sqm	22
Type C1 3 bed [2st.] 118 sqm	9
Type C2 3 bed [2st.] 117.4 sqm	8
Type C3 3 bed [2st.] 118.6 sqm	1
Type D1 4 bed [2st.] 141 sqm	9
Type D2 4 bed [2st.] 142 sqm	2
Type F1 4 bed [2st.] 134.4 sqm	11
Type F2 4 bed [2st.] 135.6 sqm	5
Type F3 4 bed [2st.] 146.5 sqm	2
Type F4 4 bed [2st.] 146.4 sqm	5
Type F5 4 bed [2st.] 147.8 sqm	17
Type G 3 bed [1.5st.] 114 sqm	11
Type H 4 bed [1.5st.] 147 sqm	5
DUPLEXES	
Type J1/J2 2 bed Apart.[1st.] 78.5 sqm	9
Type K1/K2 3bed Duplex [2st.] 114.4 sqm	9
Type J3 2 bed Apart.[1st.] 83.5 sqm	2
Type K3 3bed Duplex [2st.] 114.4 sqm	2
Total Residential Units	172

REFER TO LANDSCAPE ARCHITECT'S DRAWINGS FOR ALL LANDSCAPING DETAILS INCLUDING BOUNDARY TREATMENTS

HOUSE TYPE F1,F2,F4,F5

Project	Portmarnock South Phase 1D Quintain Developments Ireland Limited		
Drawing Title	House Type F1,F2,F4,F5 - Plans		
Drawing No	61588-P-074		
Scale	1:100@A1	Rev	01
Drawn	RT	Date	26.11.2021

Notes	Issue Status	No.	Date	Revision	Initials
1. Copyright Reserved	Progress	01	26.11.2021	SHD PLANNING APPLICATION TO ABP	RT
2. Work to agreed dimensions only. Do not scale drawing	Planning Application				
3. The contractor is responsible for checking all levels and dimensions on site and shall refer all discrepancies to the Architect	Fire Cert				
4. Where appropriate, for details of r.c. structure, or mechanical and electrical details, see Engineers drawings	Disability Cert				
5. Proprietary items shall be fixed in strict accordance with manufacturers instructions.	Tender				
6. Sizes of proprietary items shall be checked with manufacturer.	Construction				
7. The contractor shall be responsible for the coordination of structure, finishes and services.	As Built				