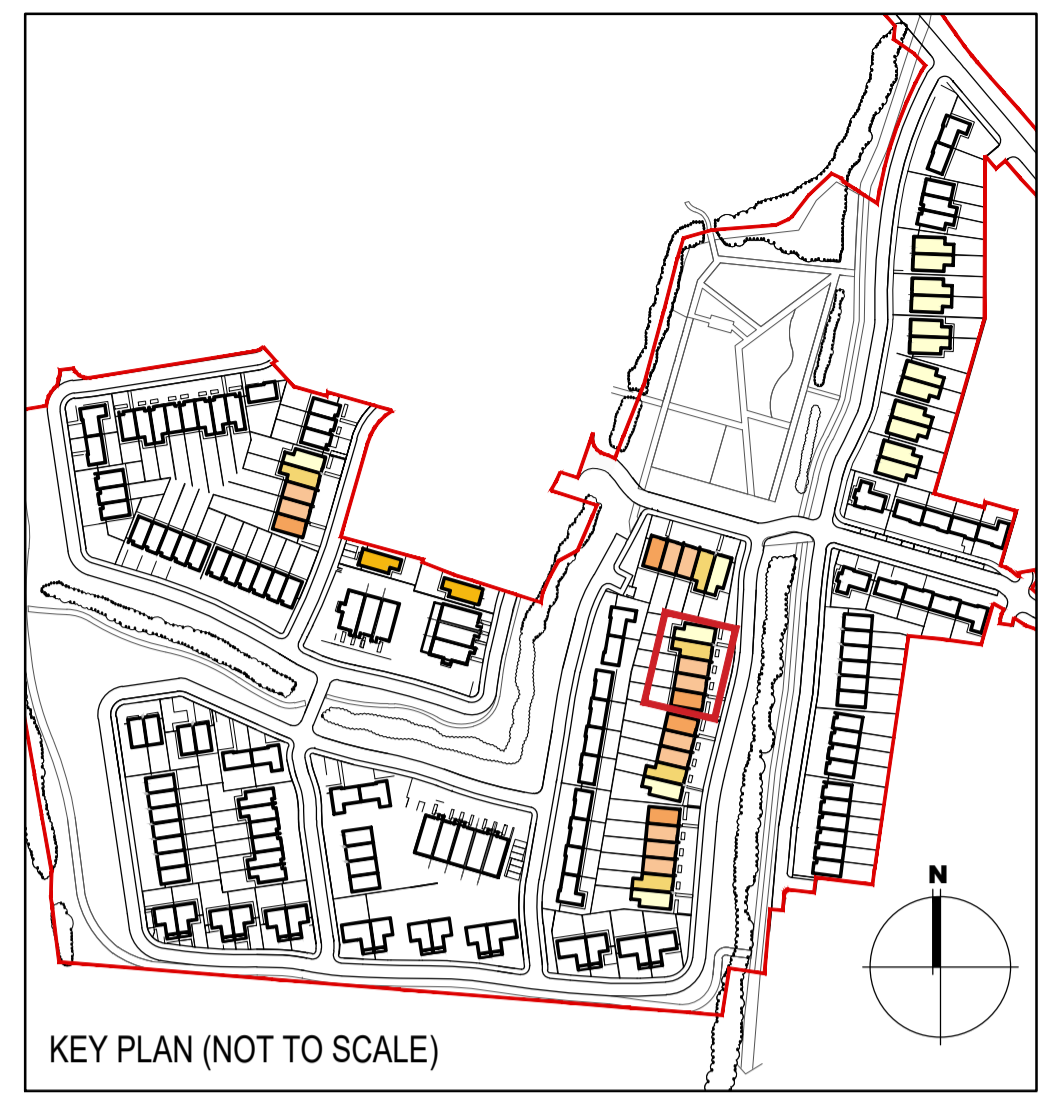


HOUSE TYPE F1	Ground floor area	67.2m ²		HOUSE TYPE F4	Ground floor area	79.3m ²	
	First floor area	67.2m ²			First floor area	67.1m ²	
	Total Floor Area (4-bed unit):		134.4m ²		Total Floor Area (4-bed unit):		146.4m ²
HOUSE TYPE F2	Ground floor area	67.8m ²		HOUSE TYPE F5	Ground floor area	80.0m ²	
	First floor area	67.8m ²			First floor area	67.8m ²	
	Total Floor Area (4-bed unit):		135.6m ²		Total Floor Area (4-bed unit):		147.8m ²



EXTERNAL FINISHES

WALLS: PAINTED SAND / CEMENT RENDER OR PROPRIETARY PRECOLOURED RENDER FINISH
SELECTED BRICKWORK WHERE INDICATED ON DRAWINGS

WINDOWS: SELECTED PROPRIETARY DOUBLE / TRIPLE GLAZED WINDOW SYSTEM WITH FRAMES TO APPROVED COLOUR
OBSCURED GLAZING TO BATHROOMS AND EN-SUITES.

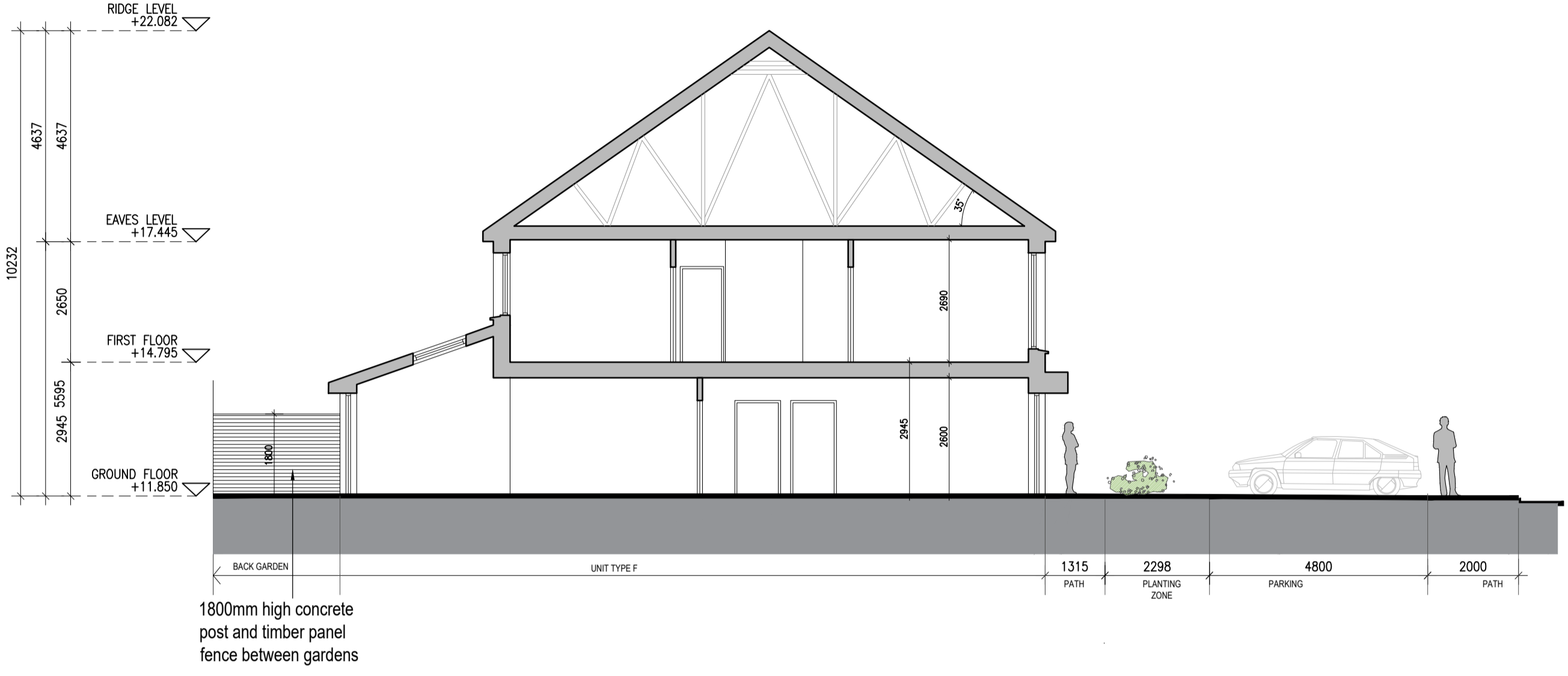
DOORS: SELECTED PROPRIETARY DOORS AND GLAZED SIDE SCREENS TO APPROVED COLOUR.

RAINWATER GOODS: uPVC OR POWDER COATED METAL GUTTERS AND RAINWATER PIPES TO SELECTED COLOUR.

MAIN ROOF: CONCRETE ROOF TILES IN SELECTED COLOUR.

LOW LEVEL PROJECTION: ZINC CANOPY ROOF TO REAR OF UNITS

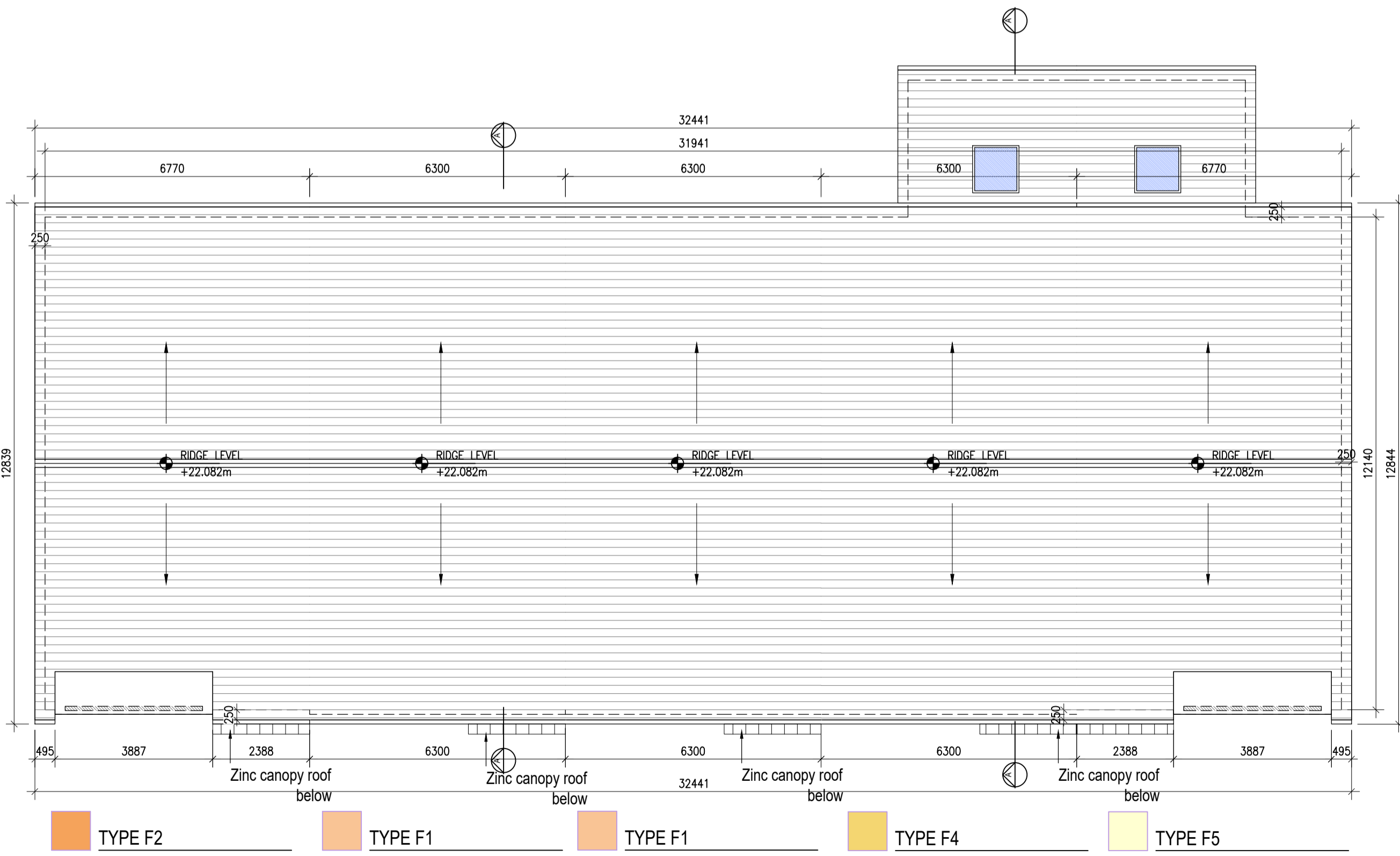
OTHER ITEMS: uPVC OR POWDER COATED METAL FASCIAS, SOFFITS AND BARGE BOARDS
PAINTED MILDSTEEL RAILINGS AND BALUSTRADES



04 Type F4 - Section
1:100@A1 4 BED HOUSE



Type F1 - Section 05
1:100@A1 4 BED HOUSE



03 Type F5,F4,F1,F2 - Roof Level
1:100@A1 4 BED HOUSE

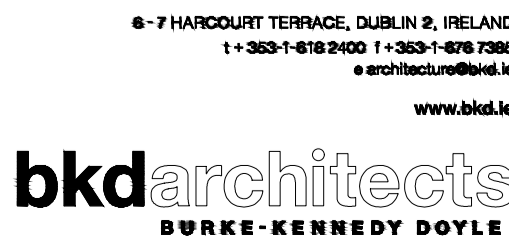
HOUSES TYPES		Numbers of units
Type A1/A2/A3	3 bed [2st.] 108.6 sqm	32
Type A4/A5/A6	3 bed [2st.] 117.6 sqm	11
Type B1/B2/B3	3 bed [2st.] 110.6 sqm	22
Type C1	3 bed [2st.] 118 sqm	9
Type C2	3 bed [2st.] 117.4 sqm	8
Type C3	3 bed [2st.] 118.6 sqm	1
Type D1	4 bed [2st.] 141 sqm	9
Type D2	4 bed [2st.] 142 sqm	2
Type F1	4 bed [2st.] 134.4 sqm	11
Type F2	4 bed [2st.] 135.6 sqm	5
Type F3	4 bed [2st.] 146.5 sqm	2
Type F4	4 bed [2st.] 146.4 sqm	5
Type F5	4 bed [2st.] 147.8 sqm	17
Type G	3 bed [1.5st.] 114 sqm	11
Type H	4 bed [1.5st.] 147 sqm	5
DUPLEXES		
Type J1/J2	2 bed Apart.[1st.] 78.5 sqm	9
Type K1/K2	3bed Duplex [2st.] 114.4 sqm	9
Type J3	2 bed Apart.[1st.] 83.5 sqm	2
Type K3	3bed Duplex [2st.] 114.4 sqm	2
Total Residential Units		172

REFER TO LANDSCAPE ARCHITECT'S DRAWINGS FOR ALL LANDSCAPING DETAILS INCLUDING BOUNDARY TREATMENTS

HOUSE TYPE F1,F2,F4,F5

No.	Date	Revision	Initials
01	26.11.2021	SHD PLANNING APPLICATION TO ABP	RT

Project	Portmarnock South Phase 1D Quintain Developments Ireland Limited
Drawing Title	House Type F1,F2,F4,F5 - Plans, Section
Drawing No	6158B-P-075
Scale	1:100@A1
Rev	01
Drawn	RT
Date	26.11.2021



Standard 6158B-P-074-075-Type F1 F2 F4 F5 - Plans, Section.dwg 26/11/2021 17:10:51